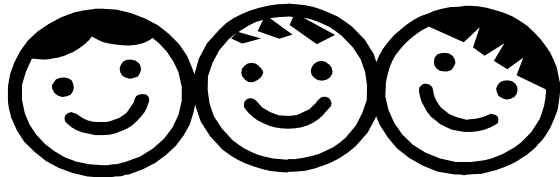


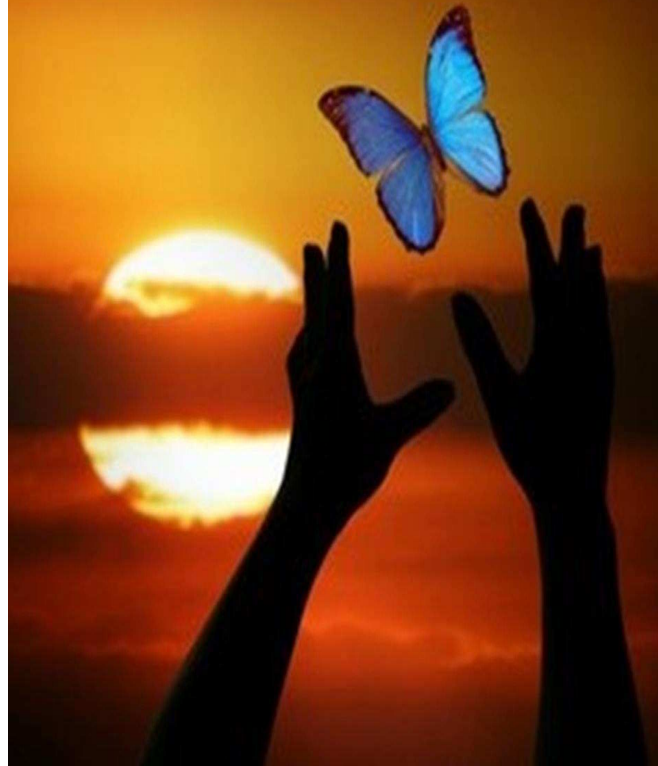
How Targeted Behaviour can support your school

Targeted interventions that support the inclusion of children with BESD in schools

- Assessment of pupils
- IEP/PSP support
- Model the delivery of targeted interventions
- Provide resources for targeted interventions
- Meet with parents, school staff and others regarding targeted programme



Focusing on solutions and working together to create positive outcomes for children and young people, who experience a barrier to their achievement.



**Targeted Education Support Service,
Targeted Services,
Early Intervention and Prevention (0-19)**

Wigan Council, People Directorate,
Children, Adults and Families,
The Cavendish Centre,
Cavendish Street,
Leigh
WN7 1SG

☎ 01942 201914

Wigan♥
Council

TESS

Targeted Education Support Service

Our role is to provide effective support to pupils and schools where learning and/or behaviour are a concern and may have an effect on achievement.

As a team of Teachers and Teaching Assistants, we offer support to schools in identifying children's learning needs and developing positive behaviour for learning. Our work involves us in supporting children by giving advice, training and modelling best practice to schools and families.



How The TESS Teacher Can Support Your School

The TESS Teacher can provide the following:-

Support For SENCos

- Advice on general SEN & Inclusion issues
- Data analysis and Tracking
- Provision Mapping
- Monitoring, assessing and measuring impact.
- Administration and Paperwork Support e.g. Request for statutory assessment, SIS, TIS, TAS, etc.
- Support for new SENCos
- Support for "The National Award for SEN Coordination "(mentoring, tutoring)
- DFS Support Partners
- Raising awareness of DfE initiatives and publications
- Latest resources

Training (See INSET/Training offered)

Consultations and Advice

- SENCos
- Teachers
- Teaching assistants
- Parents
- Educational psychologists
- Other Professionals
- Drop-in sessions

Contribute to Meetings

- Multi-agency Meetings
- Change Meetings
- CAF Meetings
- SEN Panel
- Support for schools of concern e.g. (RAP meetings)
- SEN Cluster Meetings
- Inclusion Conference

Assessment

- Full
- Partial
- Screening
- Linked to consultation
- LA requests
- Other services' requests
- Access arrangements



Examples of Support & Training for Behaviour

Behaviour Management - consultation and classroom support

Whole School Behaviour for Learning

Inclusion Development Programme (BESD)

Advice and guidance on Whole School Behaviour Policy

Attention Deficit Hyperactivity Disorder observations and advice (ADHD)

Anger Management Strategies

Anti-Bullying – A Practical Approach

Autism

Bereavement, Separation and Loss Support

Challenging behaviour (& how to de-escalate situations)

Circle of Friends

Circles of Adults

Circle Time

Conflict Resolution

Decision Making

Emotional Literacy

Lunchtime Welfare

Newly Qualified Teacher

Nurture Group plus support network

Nurturing Talk

R.Time

Peer Massage

Play Leader

Positive Handling - Developing a Care and Control Policy

R Time

Self Esteem

Social Skills

Support Staff

Talking partners

Team Teach

Trauma—recognising & strategies



Examples of Training for Learning

INSET	TEACHING ASSISTANT TRAINING
Sounds-write	Phonological Awareness
Fischer Family Trust (Y1 Literacy Programme)	Supporting Reading
Talking Partners	Supporting Spelling
Maths Recovery	Supporting Writing
ARROW	Development of Motor Co-ordination Skills
ELKLAN	Supporting Language Development
Better Reading	Supporting Maths
COOL (Co-ordination and Learning)	Using Numicon

Examples of INSET delivered in schools

- Dyslexia Friendly Schools (DFS)
- Use of P Scales
- Reciprocal Teaching
- Pupil Friendly IEPs
- Multisensory Learning
- Numicon
- Support for Pupils with Language Difficulties
- Paired Reading
- Hearing Children Read/Supporting Reading
- Spelling (Various)
- Phonological Awareness
- Precision Teaching/Monitoring
- Running Records
- An Overview of Sounds-Write
- Phonics for High School
- Basic Assessments (How to use)