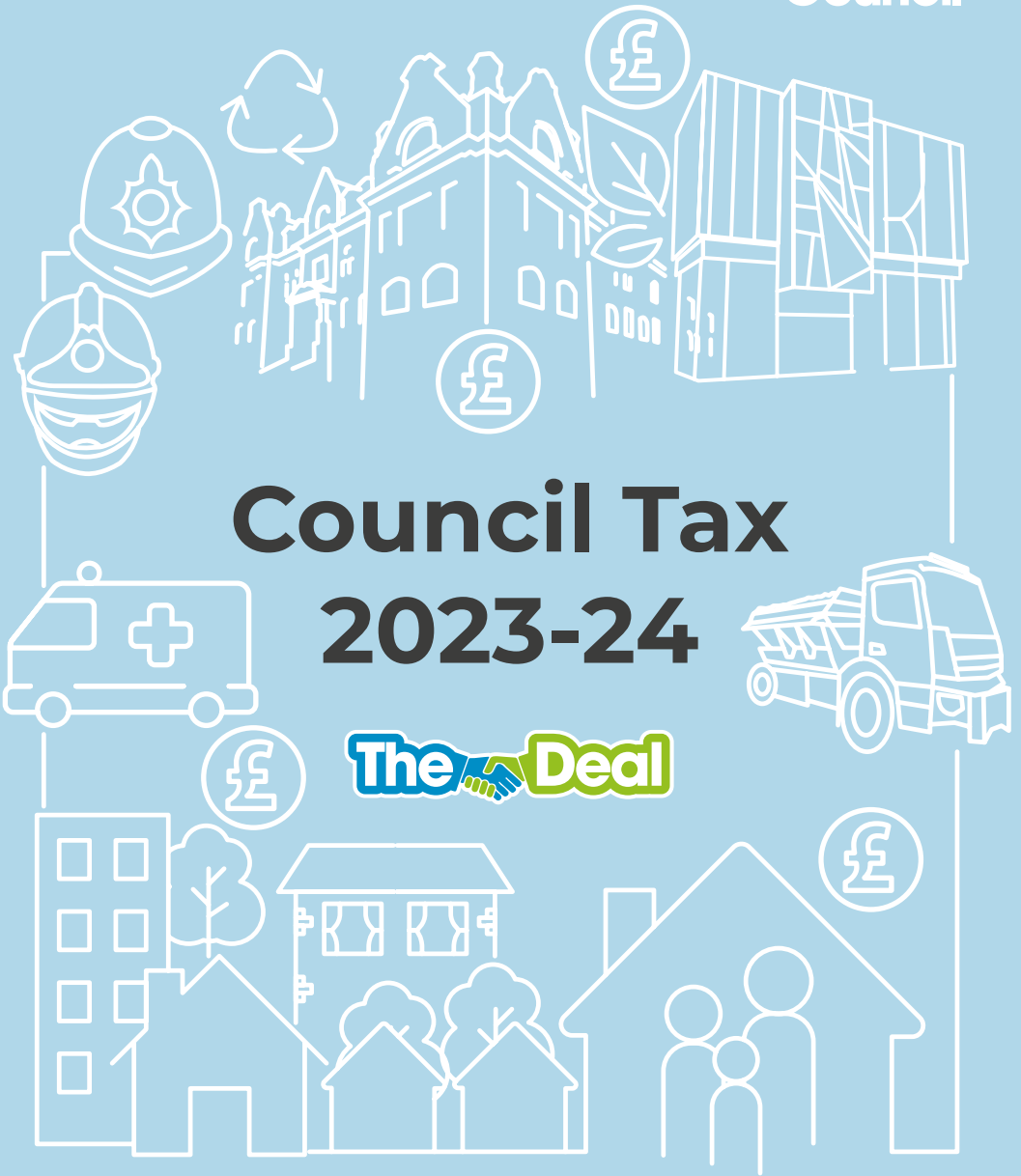


# Council Tax 2023-24

The Deal



---

## Foreword By The Leader Of Wigan Council



Welcome to this year's Council Tax booklet.

The start of the new municipal year provides us with both an opportunity

to reflect on the achievements of the previous 12 months and also look ahead to what is on the horizon for 2023/24.

The past year was a momentous one. We welcomed two major tournaments in the Rugby League World Cup and the UEFA Women's Euros, which saw our communities unite in celebration of our love of sport.

Their legacy programmes will continue to benefit us all for years to come and they have left us with lifelong memories.

We also saw major development projects take big steps forward, such as the opening of the Leigh Youth Hub and the major investment at Pennington Flash.

Throughout the year, there has been significant progress on delivering our Deal 2030 priorities, with some of those achievements highlighted in the coming pages.

In recent weeks, we received the news that our bid for levelling-up funding for Haigh Hall was successful and – along with match-funding from Wigan Council and the National Lottery Heritage Fund – the masterplan now has more than £24m of external investment.

As we turn our attentions to 2023/24,

it is clear that local government, like many other sectors, continues to face significant financial pressures.

Like all households in the borough, the town hall is impacted by rising costs and demand, in addition to having to have cut £160m from our budgets since the start of the austerity period.

Unfortunately, a rise for our section of the council tax bill is included. Quite simply, we have been left with no choice by central government.

We do not take this decision lightly and I would like to emphasise that our rates will remain one of the lowest across the country.

Through continued, prudent financial planning and the success of The Deal, we remain able to invest in the areas that we know are important to our communities; providing community funding, boosting our town centres and environment along with providing opportunities for young people, to reference just a few.

Through our Here For You campaign, we remain committed to supporting our residents in any way that we can as we all continue to face the effects of the rising cost-of-living.

As in previous years, we will make further progress with our Community Wealth Building initiative, to support our local economy and tackle economic inequality.

A handwritten signature in black ink, reading "D Molyneux".

Councillor David Molyneux MBE  
Leader of Wigan Council

---

## About Council Tax

Council Tax is a property tax with a personal element.

Each year we send a Council Tax bill to every domestic property in the borough, whether it's a house, bungalow, flat, maisonette, mobile home or houseboat. Each dwelling is put into one of the eight bands below, based on what it would have cost to buy on the open market on 1 April 1991.

Every year we set the Council Tax for each band. The amounts for 2023/2024 are below. The band given to your property is on the front of your bill.

The Valuation Office Agency decides the band not us. You can appeal against your property's band if you have moved into the property in the last six months or there has been a change in the building or physical state of the local area.

You can contact them at Valuation Office Agency, Manchester Valuation Office, Portland Tower, Portland Street, Manchester, M1 3LD.

Phone **03000 501 501**  
[www.voa.gov.uk](http://www.voa.gov.uk)

Band	Band Value	Council Tax for 2023/24
A	Up to £40,000	£1,220.53
B	£40,001 - £52,000	£1,423.95
C	£52,001 - £68,000	£1,627.37
D	£68,001 - £88,000	£1,830.81
E	£88,001 - £120,000	£2,237.64
F	£120,001 - £160,000	£2,644.49
G	£160,001 - £320,000	£3,051.34
H	£320,001 and above	£3,661.62

\*Additional parish precepts will apply for properties in Haigh and Shevington

---

## Thank You For Doing Your Part Of The Deal

Based on Band A	Council Services	GM Police precept	GM Fire precept	Adults Social Care Precept	Mayoral precept	Total
<b>2016</b>	£794.76	£104.87	£39.18	£15.89		£954.70
<b>2017</b>	£794.76	£108.20	£39.96	£40.21		£983.13
<b>2018</b>	£794.76	£116.20	£39.96	£65.26	£5.33	£1021.51
<b>2019</b>	£794.76	£132.20	£39.96	£65.26	£11.33	£1043.51
<b>2020</b>	£794.76	£138.86	£44.13	£82.46	£16.50	£1076.71
<b>2021</b>	£803.45	£145.53	£44.13	£108.77	£16.50	£1,118.38
<b>2022</b>	£821.60	£152.20	£47.47	£117.89	£21.16	£1,160.32
<b>2023</b>	£849.69	£162.20	£50.80	£136.68	£21.16	£1220.53

\*Additional parish precepts will apply for properties in Haigh and Shevington

---

### Council Services

This covers council services such as bins and recycling centres, schools and Start Well centres, street lights and road repairs.

### GM Police

This is a charge levied on behalf of the Greater Manchester Police Service.

### GM Fire Service

This is a charge levied on behalf of the Greater Manchester Fire Service.

### Adult Social Care Precept

This is a charge to cover the cost of Adult Social Care services within councils due to the budget cuts being imposed by central government. On your Council Tax bill the cumulative effect of the Adult Social Care precept will be shown.

### Mayoral Precept

This is a charge levied on behalf of the Mayor to pay for the running of the Mayor's office and to meet the Mayor's priorities in Greater Manchester.

Further information regarding the gross expenditure of the council, relevant precepting authorities and levying bodies (including their Council Tax requirements) can be found at [www.wigan.gov.uk/incomeandspending](http://www.wigan.gov.uk/incomeandspending)

## Key Statistics

Here are some key figures on what we've delivered in the past 12 months:

**1,027,603** visits to our Be Well leisure centres

Be Well

Provided care for **4190** adults

**2,830** apprenticeship starts across the borough - the highest in three years

Over **2000** visits to our borough's network of warm welcoming spaces



**£34m** funding provided for the community and voluntary sector

**£3.2m** in payments to help people struggling with their rent, or supporting food parcels and free school meals

**£12m** spent on maintaining roads, improving footpaths and road safety

Supported **264** children in approved foster placements



**17** large events bringing **116,000** visitors to the borough's town centres

Additional **£750,000** of funding to tackle neighbourhood crime and anti-social behaviour

Created **17,000** hectares of species-rich grassland increasing biodiversity and natural habitats

**£6,104,913** economic impact as a direct result of hosting the UEFA Women's Euros



Over **70,000** trees have been planted



The community recovery fund supported **311** projects totalling **£243,386**

## Flashes of Wigan and Leigh

The declaration of the 'Flashes of Wigan and Leigh' as Greater Manchester's first National Nature Reserve (NNR) has provided a major boost to conservation.

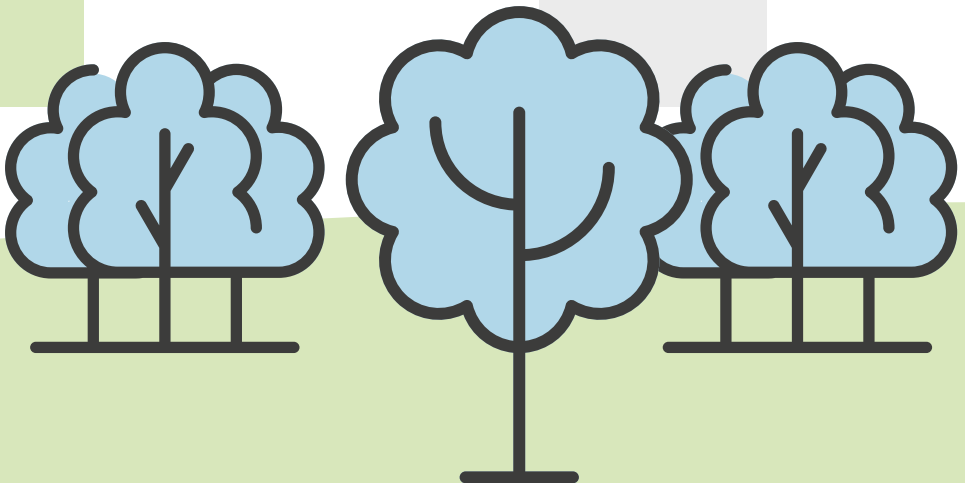
The unique chain of wetland habitats - made up of eight separate sites spanning large parts of Wigan Borough - was formally recognised by Natural England in October for its natural beauty and immense ecological importance.

Originally formed by the flooding of former coal mining sites, the Flashes are now home to nationally significant wildlife populations including the willow tit, water voles

and the great crested newt.

Wigan Council is working with Natural England and other partners including Lancashire Wildlife Trust and Forestry England to protect these precious environments.

Councillor David Molyneux MBE, Leader of Wigan Council, said: "(NNR Status) provides us with a wonderful platform from which to educate and inspire future generations and tell the incredible story of this unique landscape, which has been forged by our rich industrial heritage and is so important to our brighter, greener future."



Pennington Flash



Scotman's Flash

---

## When You May Not Have To Pay Council Tax

### You may not have to pay if only the following people occupy your property:

- Full time students
- Care Leavers up to the age of 25
- People under the age of 18
- People who have a severe mental impairment and would otherwise be liable to pay Council Tax

### You may not have to pay for a limited time if your property is not occupied because it is:

- Newly built and not yet occupied (no charge for 1 month)
- Substantially unfurnished (no charge for 1 month)
- Owned by a charity (exempt for 6 months)

### You may not have to pay for any of the following types of properties even if they are occupied:

- Armed Forces' accommodation
- Visiting Forces' accommodation
- A self-contained annexe
- Occupied by someone who has diplomatic, commonwealth or consular privilege or immunity

### You may not have to pay for your property whilst it is:

- Left empty by the owner or tenant, who was the last occupier, and who has moved to receive or provide personal care in either a hospital or home elsewhere
- Repossessed by a mortgage company
- Empty because occupation is forbidden by law
- Waiting to be occupied by a minister of religion
- The responsibility of a bankrupt's trustee
- Left empty by a student owner who lived in it immediately before leaving to study elsewhere
- An empty caravan pitch or houseboat mooring
- Unoccupied because the last occupier, who was also the owner, had died and probate or letters of administration have not yet been granted (and for 6 months after)

For further information, and to make an application for discount, exemption or reduction please visit:

[www.wigan.gov.uk/counciltaxdiscounts](http://www.wigan.gov.uk/counciltaxdiscounts)





---

## Ways To Pay Less Council Tax

The full Council Tax bill assumes that there are 2 or more adults living in a property.

If you are the only adult living in your property your bill can be reduced by 25%. We can also consider local discounts for other reasons as well.

When we work out if you are entitled to a discount we don't count these people:

- Children under 18
- People over 18 that still qualify for Child Benefit
- 18 or 19 year olds who leave school after 30 April are not counted until 1 November of the same year
- People with a severe mental impairment
- Apprentices
- Youth Training Trainees
- Care Workers
- Carers
- People in residential care homes, nursing homes and hostels that provide a high level of care
- Resident hospital patients
- Student nurses
- Prisoners in detention (unless for non payment of fines or Council Tax)

- Students in full time education
- Diplomats and members of international organisations with headquarters in the UK (and their non British spouses)
- Members of religious communities such as monks or nuns

Certain qualifying conditions apply.

### People with disabilities

If you, or a person that lives with you, has a disability you may qualify for a reduction.

Your home will need to have an extra bathroom, kitchen or other room that is used mainly to help with the person's disability. You can also qualify if the disabled person uses a wheelchair in the home.

If you qualify we will work out your Council Tax charge again using the valuation band below the one your property is in.

The council have additional discretionary powers to reduce the Council Tax liability where national discounts and exemptions cannot be applied.

For further information, and to make an application for discount, exemption or reduction please visit:

[www.wigan.gov.uk/counciltaxdiscounts](http://www.wigan.gov.uk/counciltaxdiscounts)



---

## Council Tax For Empty Dwellings And Second Homes

### When a dwelling first becomes empty

A dwelling that becomes newly empty will be given a maximum 1 month full exemption followed by a 25% discount for a maximum of 5 months.

### Long term empty dwellings

Dwellings left empty and unfurnished for longer than 6 months, or have already been empty for between 6 months and 2 years, will be charged 100% Council Tax.

### Empty Homes Premium

Long term empty dwellings that remain empty and unfurnished for longer than 2 years will attract an Empty Homes Premium. The premium will be an extra 50% charge in addition to the 100% charge for a long term empty dwelling.

### Second homes

Dwellings that are unoccupied but furnished are classed as second homes. There is no discount for these dwellings. The charge for a second home is 100%.

If your property becomes empty, contact us straight away and we can tell you if you qualify for any reduction.

### A property in need of, or undergoing, major repairs

If you own a property that is either in need of, or undergoing, major repairs you may be entitled to a reduction of 75% from your bill for a maximum of 12 months, or until the work is completed if that is sooner. You will be asked to provide evidence of the extent of the works required to render the property habitable. Only one major repairs reduction can be given for any period during which a property is continuously empty. Certain qualifying conditions apply for all reductions.

### Family annexe

If your property has an annexe which has a separate Council Tax band and is occupied by a relative, they may be entitled to a reduction from their Council Tax.

For further information, and to make an application for discount, exemption or reduction please visit:

[www.wigan.gov.uk/counciltaxdiscounts](http://www.wigan.gov.uk/counciltaxdiscounts)



---

# Council Tax Reduction

Our Council Tax Reduction scheme helps households on low incomes to pay their Council Tax bill.

## 1. The National Council Tax Reduction Scheme – pensioner households and households with children aged under 5

These households:

- Can apply for support
- Can apply for Second Adult Rebate if the only other adults (not your partner) living in the property is on a low income
- Can apply for backdated support. This will only be awarded if there is good cause why the claim wasn't made from the earlier date

## 2. The Local Council Tax Reduction Scheme – working age households with no children aged under 5

These households:

- Can apply for support under our local Council Tax Reduction Scheme
- Will have their entitlement calculated using the national scheme but support will be reduced by 20%
- Cannot apply for Second Adult Rebate

- Can only get support from the date a claim for reduction is made

## Who can apply for Council Tax Reduction?

To apply for Council Tax Reduction you must be the person whose name is on the Council Tax bill.

You may qualify if you are:

- On Income Support, Jobseekers Allowance, Employment Support Allowance or Universal Credit
- On Pension Credit, Guaranteed Credit and in some cases Saving Credit
- Working and on low pay (including people who are self employed)
- On a low income. For example you might only get a retirement pension or be getting social security benefits like Incapacity Benefit
- A working age household with capital / savings under £12,000
- A pensioner household, or household with a child under 5, with capital/savings under £16,000



---

## How To Apply

You can find out more information and apply online at:

[www.wigan.gov.uk/counciltaxreduction](http://www.wigan.gov.uk/counciltaxreduction)

You cannot make a claim for Council Tax Reduction through Job Centre Plus or the Pensions Service.

### Need help to make an application?

- You can get help and use our online facilities at our Life Centres in Wigan and Leigh.
- If you are a tenant of Your Housing Group, Jigsaw Homes or Riverside Housing, your landlord can help you fill in and check your benefit claim online.
- If you do not have access to a computer or are unable to visit us at any of the above places, contact us **01942 489002**

---

The following agencies can give advice about your application:

- **Citizens Advice**  
Tel: 0808 2787 801  
Email: [advice@wigancab.org](mailto:advice@wigancab.org)  
[www.cawb.org.uk](http://www.cawb.org.uk)
- **Age UK** (for those over 50) Wigan  
Tel: 01942 615880  
Email: [enquiries@ageukwiganborough.org.uk](mailto:enquiries@ageukwiganborough.org.uk)  
[www.ageukwiganborough.org.uk](http://www.ageukwiganborough.org.uk)
- **Wigan & Leigh Carers Centre**  
(For registered Carers)  
Tel: 01942 705959  
Email: [info@wlcccarers.com](mailto:info@wlcccarers.com)  
[www.wlcccarers.com](http://www.wlcccarers.com)

- Further information and support is available from our **Welfare Rights Team**:  
Tel: 01942 705221  
Email: [welfarerightsadvice@wigan.gov.uk](mailto:welfarerightsadvice@wigan.gov.uk)  
[www.wigan.gov.uk/localwelfaresupport](http://www.wigan.gov.uk/localwelfaresupport)

These facilities are available to all customers:

- Access for wheelchair users at our Life Centres in Wigan and Leigh.
- ReciteMe is available on our website so that you can have the information on our web pages read aloud to you.

---

## Changes You Need To Tell Us About

Tell us straight away if you are getting Housing Benefit, Council Tax Reduction or have a discount or exemption applied and have a change in circumstances.

If you do not tell us about a change as soon as it happens, you could pay the wrong amount of Council Tax, lose benefits or we could pay you too much. If this happens you may have to pay any overpaid amount back and pay any underpaid Council Tax amount.

You can tell us online at:  
[www.wigan.gov.uk/benefitsreportachange](http://www.wigan.gov.uk/benefitsreportachange)

**It is an offence not to tell us about any change in circumstances that affects your entitlement. We may take court action against you.**

You can get face-to-face help with any enquiry about a council service at our Life Centres in Wigan and Leigh.

**Complaints or compliments**  
Fill in an online form at:  
[www.wigan.gov.uk/contactus](http://www.wigan.gov.uk/contactus)

---

## Don't Be Excluded

If you are struggling to pay your bills or need help and advice, get in touch with those you owe money to as soon as you can.

You can nominate a friend or representative to help you if you find it hard to manage it yourself.



### In a crisis?

If you find yourself in a crisis our Local Welfare Support Advisors can help support customers to:

- Access financial help and advice.
- Gain appropriate referrals e.g. food parcels, white goods.
- Build self-reliance.

For further information go to:  
[www.wigan.gov.uk/Hereforyou](http://www.wigan.gov.uk/Hereforyou) or visit our Life Centres in Wigan or Leigh.



## Universal Credit

Universal Credit is a payment paid by the Department for Work and Pensions to help with your living costs if you are on a low income or out of work.

It replaces existing benefits and credits into a single monthly payment.

From 18th April 2018 most people making a claim for working age benefits and help with housing costs in Wigan Borough will be placed in Universal Credit Full Service.

You will be automatically transferred to Universal Credit in the Wigan borough if you have a change of circumstances that affects your current benefits.

You will have to pay your Council Tax from your monthly Universal Credit payment yourself. If you are on a low income you may qualify for Council Tax Reduction.

Apply at

[www.wigan.gov.uk/counciltaxreduction](http://www.wigan.gov.uk/counciltaxreduction)

Find out more about Universal Credit on the government website

[www.gov.uk/universal-credit](http://www.gov.uk/universal-credit)

If you don't have a computer at home you can use one for free at your local library or Life Centre. There are also drop-in sessions for residents that need extra help to get online. For more information about help and support for Universal Credit claimants visit

[www.wigan.gov.uk/universal-credit](http://www.wigan.gov.uk/universal-credit)

If you rent your home, under limited circumstances you may be entitled to Housing Benefit. For more information about Housing Benefit visit:

[www.wigan.gov.uk/HousingBenefit](http://www.wigan.gov.uk/HousingBenefit)



---

## Information About The Adult Social Care Precept

Wigan Council has responsibility for Adult Social Care functions. The Secretary of State for Levelling Up, Housing and Communities has given powers to charge an annual 'precept' of 2% on its Council Tax for the financial year 2023/24 without holding a referendum, to assist the authority in meeting its expenditure on Adult Social Care for the financial year 2023/24.

For Adult Social Care authorities, Council Tax bills show two percentage changes: one for the part of the overall change attributable to the Adult Social Care Precept, and one for the part attributable to general expenditure.

---

## Information About The Mayoral Precepts

The Mayor of Greater Manchester holds the responsibility of the Greater Manchester Police and Crime Commissioner and the Greater Manchester Fire and Rescue services. From 2018/2019 the precept on Council Tax bills for Police services was replaced with the Mayoral Police and Crime Commissioner Precept Component and this precept funds Police services. The precept for the Fire and Rescue Services was replaced with the Mayoral General Precept Component (including Fire Services). This precept includes an amount for Fire and Rescue Services and an amount to fund the Greater Manchester Mayor and the work he wants to do in Greater Manchester. The information provided by the Mayor indicates that the precept will pay for the running of the Mayor's office and to meet the Mayor's priorities in Greater Manchester.

For further information please visit [www.greatermanchester-ca.gov.uk/counciltax](http://www.greatermanchester-ca.gov.uk/counciltax)

---

### Mayoral Police and Crime Commissioner Precept

Council Tax Band	A	B	C	D	E	F	G	H
Precept Charge (£)	162.20	189.23	216.26	243.30	297.36	351.43	405.50	486.60

### Mayoral General Precept (including Fire)

Council Tax Band	A	B	C	D	E	F	G	H
Precept Charge (£)	71.96	83.96	95.95	107.95	131.93	155.92	179.91	215.90

---



**Wigan  
Council**

**Foster**   
For Wigan

Local people supporting local families

**Andrea**

“We’ve kept in touch with many of the children we’ve looked after over the years and it’s great to be able to offer support to so many local families.”

Whether you’re ready to start your fostering journey or just want to find out more, it’s never too early to see how fostering can fit with your life.

[www.wigan.gov.uk/fostering](http://www.wigan.gov.uk/fostering)  
**01942 487200**

## The Electoral Commission

## Voter ID: A summary

On **Thursday 4 May 2023**, local elections are taking place across 230 councils in England.

At these elections, you will need to bring photo ID to be able to vote at a polling station. A wide range of photo ID will be accepted, including passports, driving licences and cards with a PASS Mark.

If you don’t have an accepted form of photo ID, you can apply for a free voter ID document known as a Voter Authority Certificate.



Find out more at

[electoralcommission.org.uk/voterID](http://electoralcommission.org.uk/voterID)

No ID? You can apply for free voter ID

