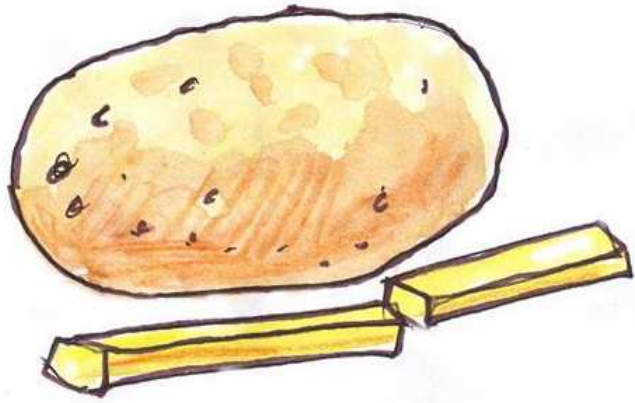


# Graphemes

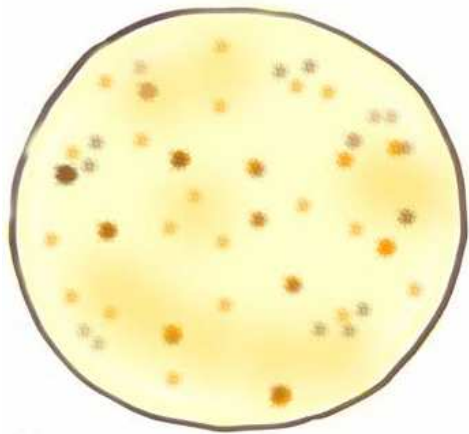
ch, sh, th, ng



chip



chop

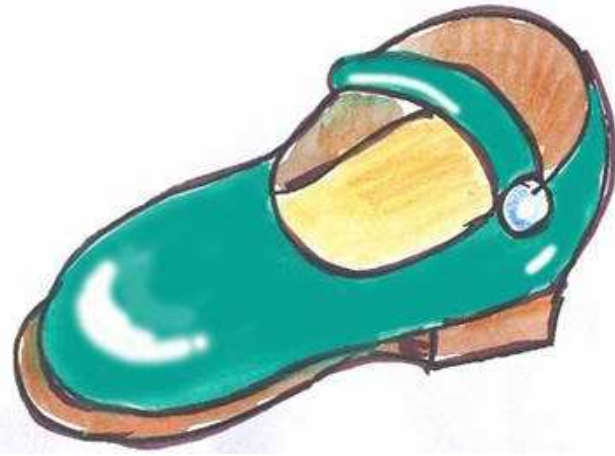


chapatti



chicken

shoe



ship

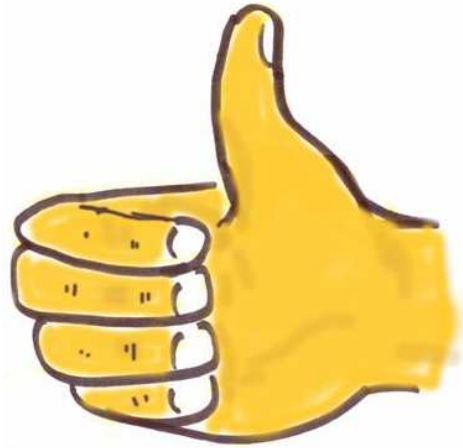


shalwar



shower





thumb



thin

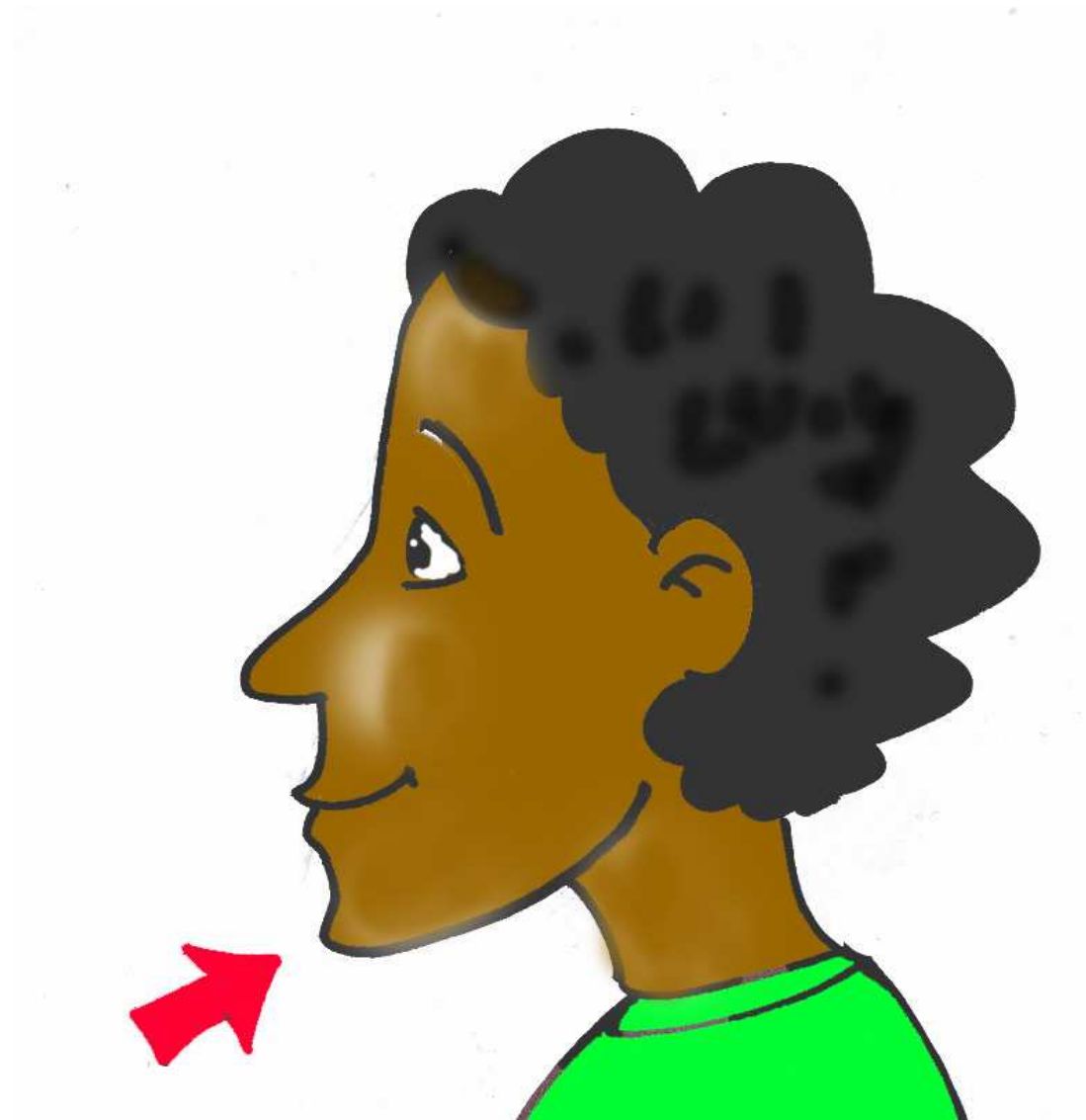


three



throw

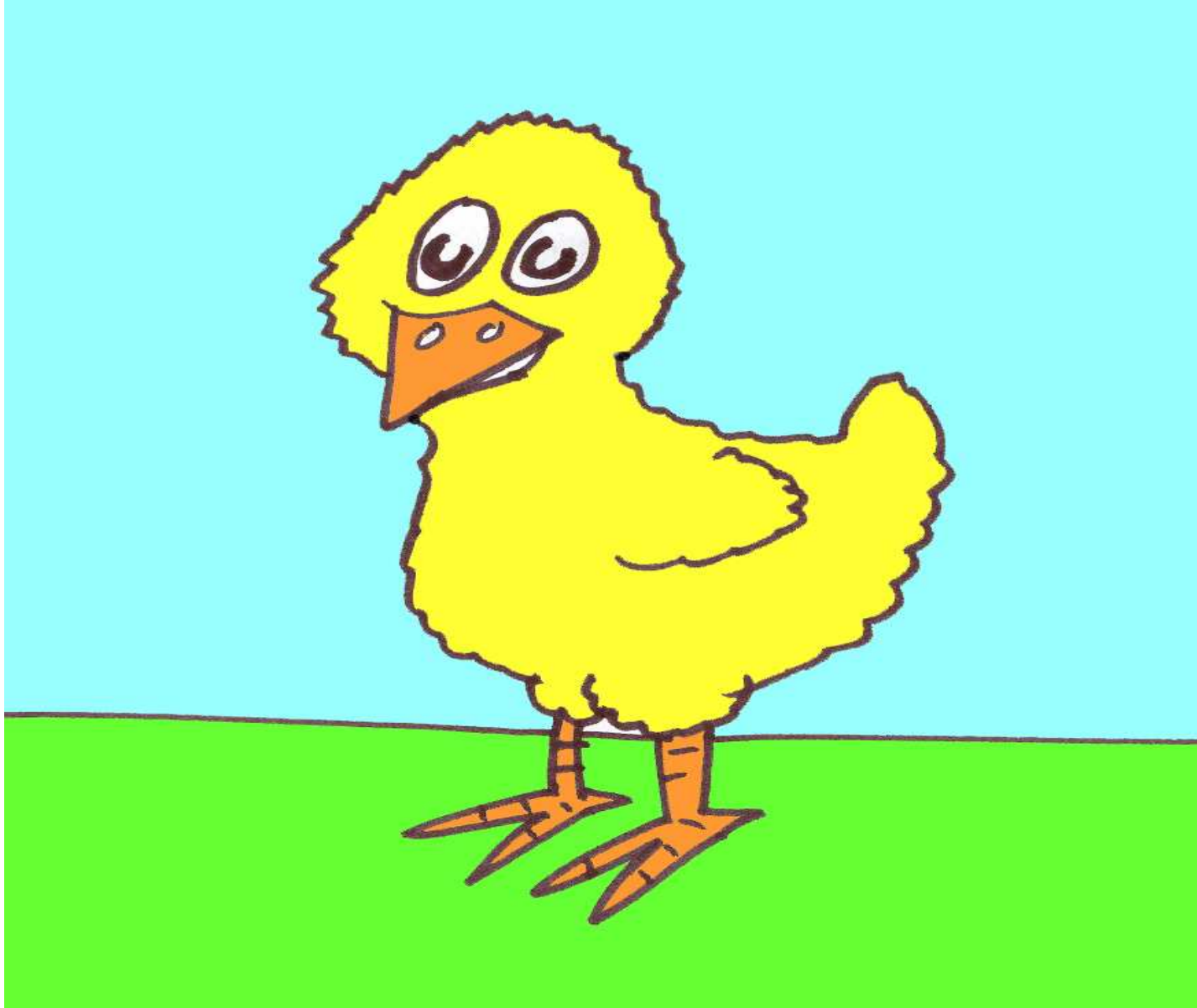
ch words



chin



chop

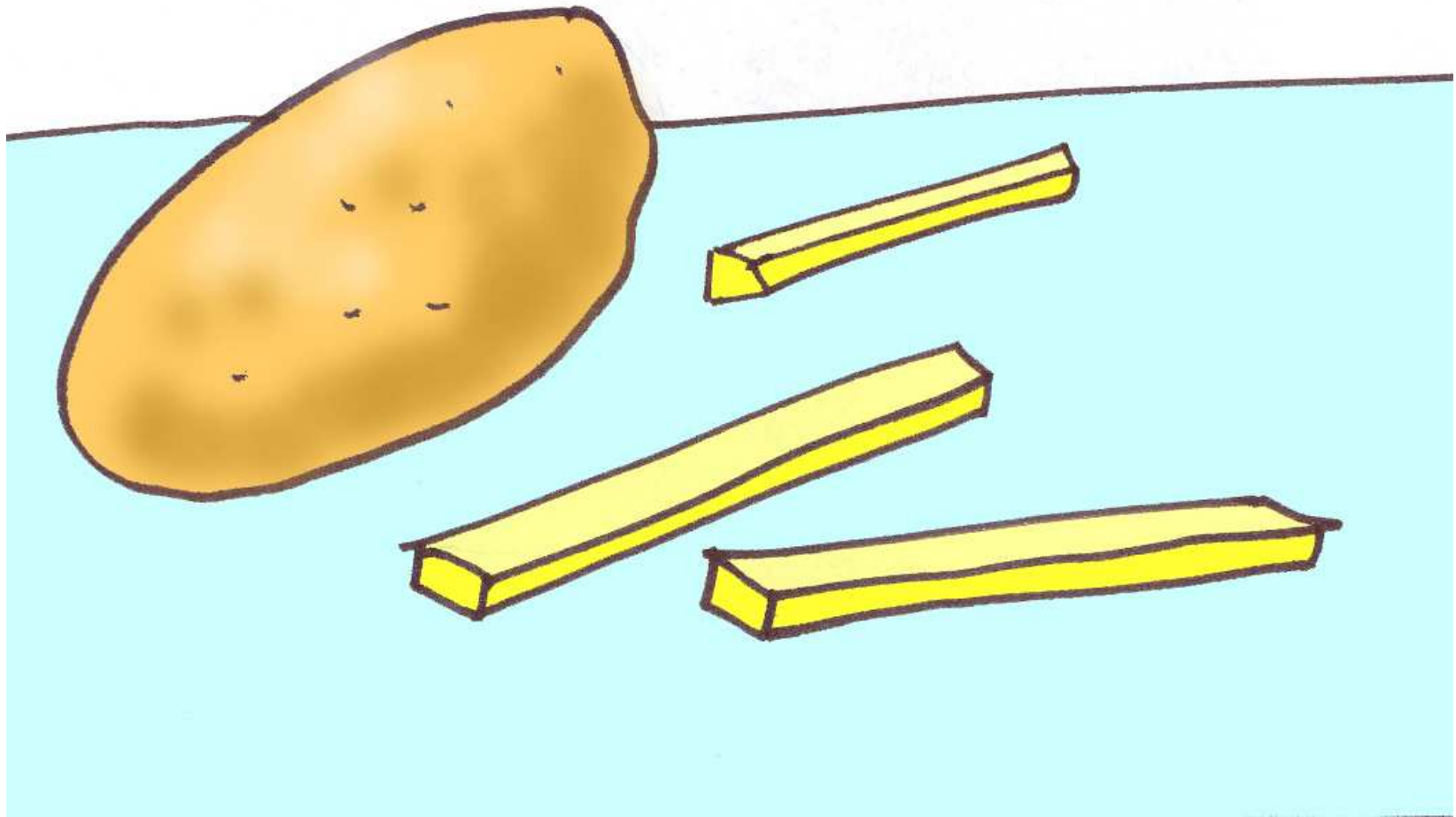


chicken



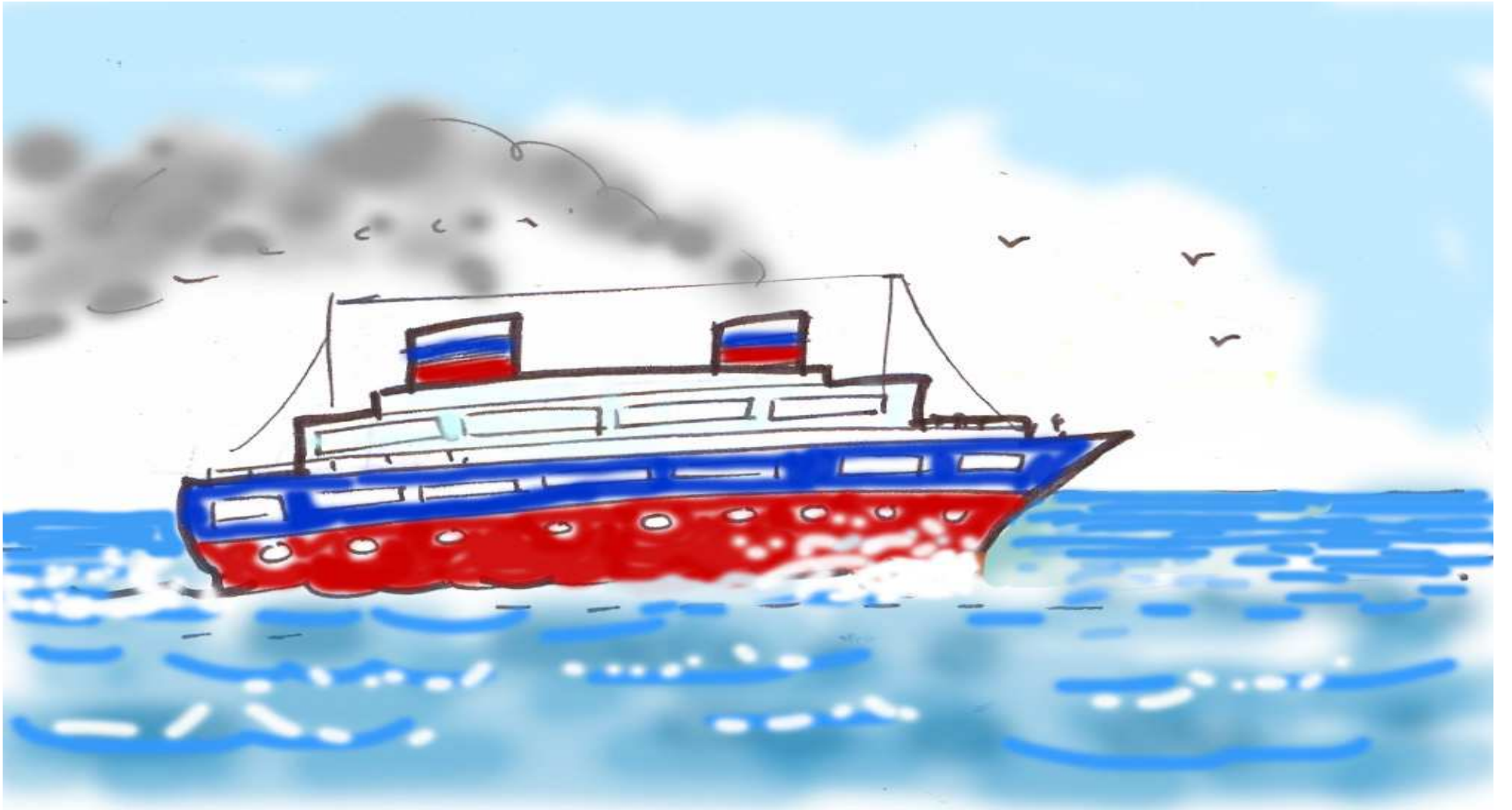


rich

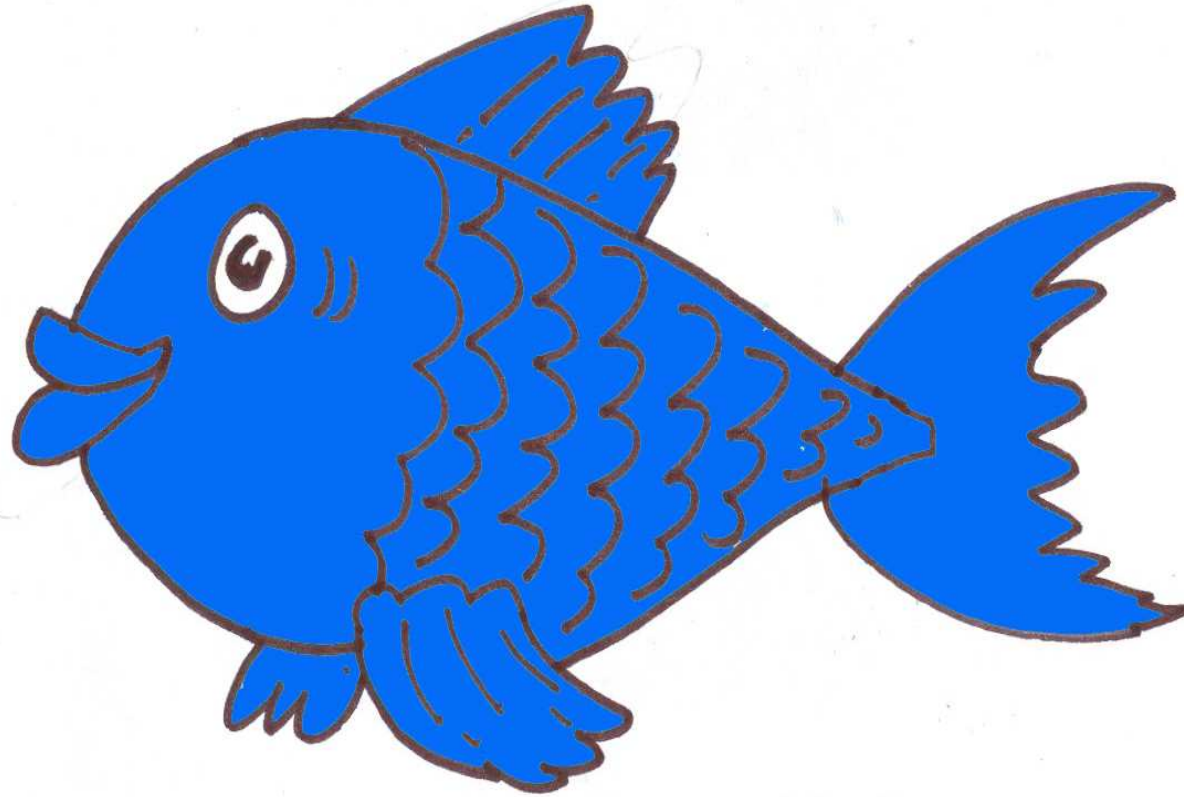


chip

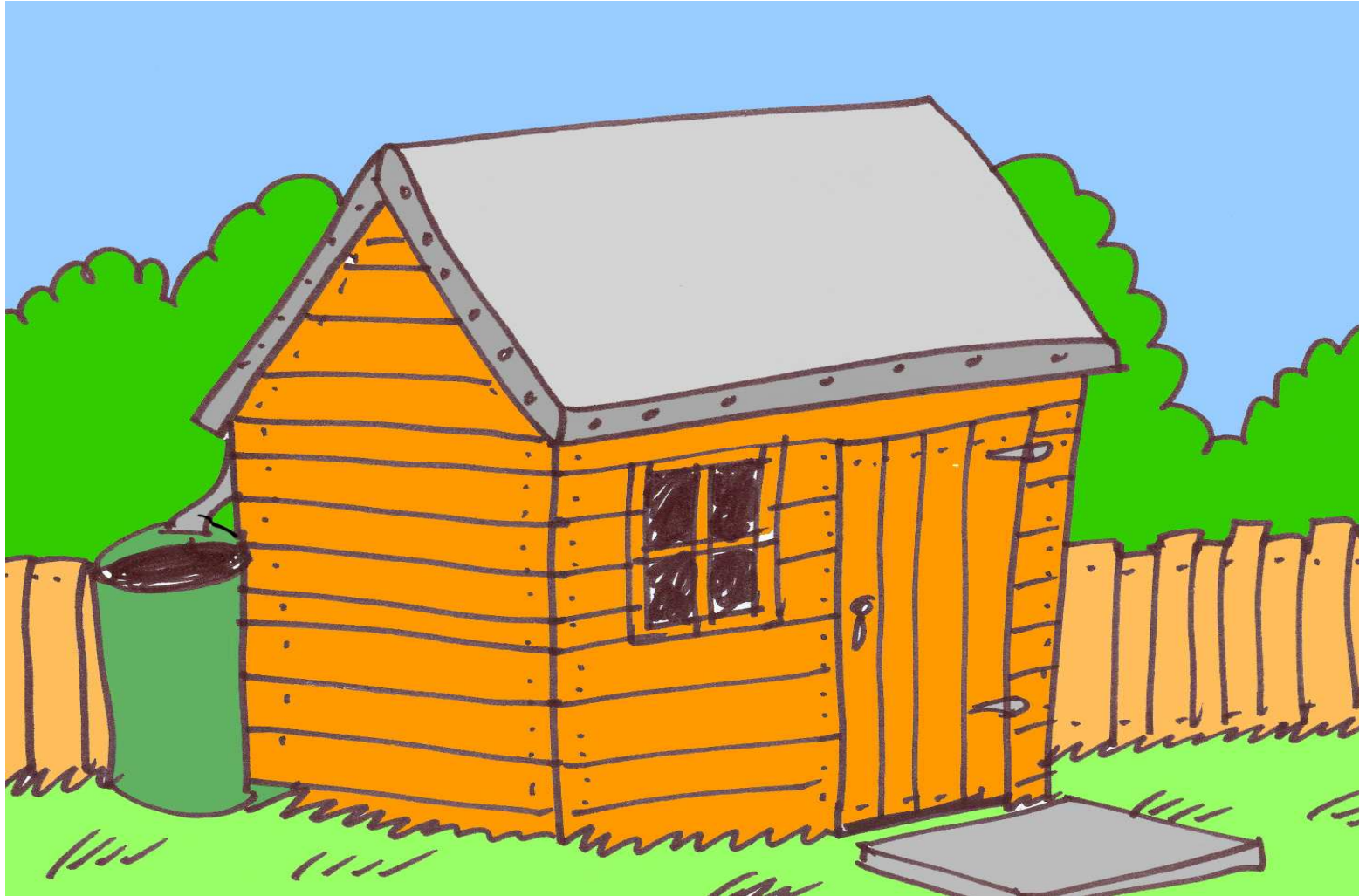
sh words



ship



fish



shed



shop



shell



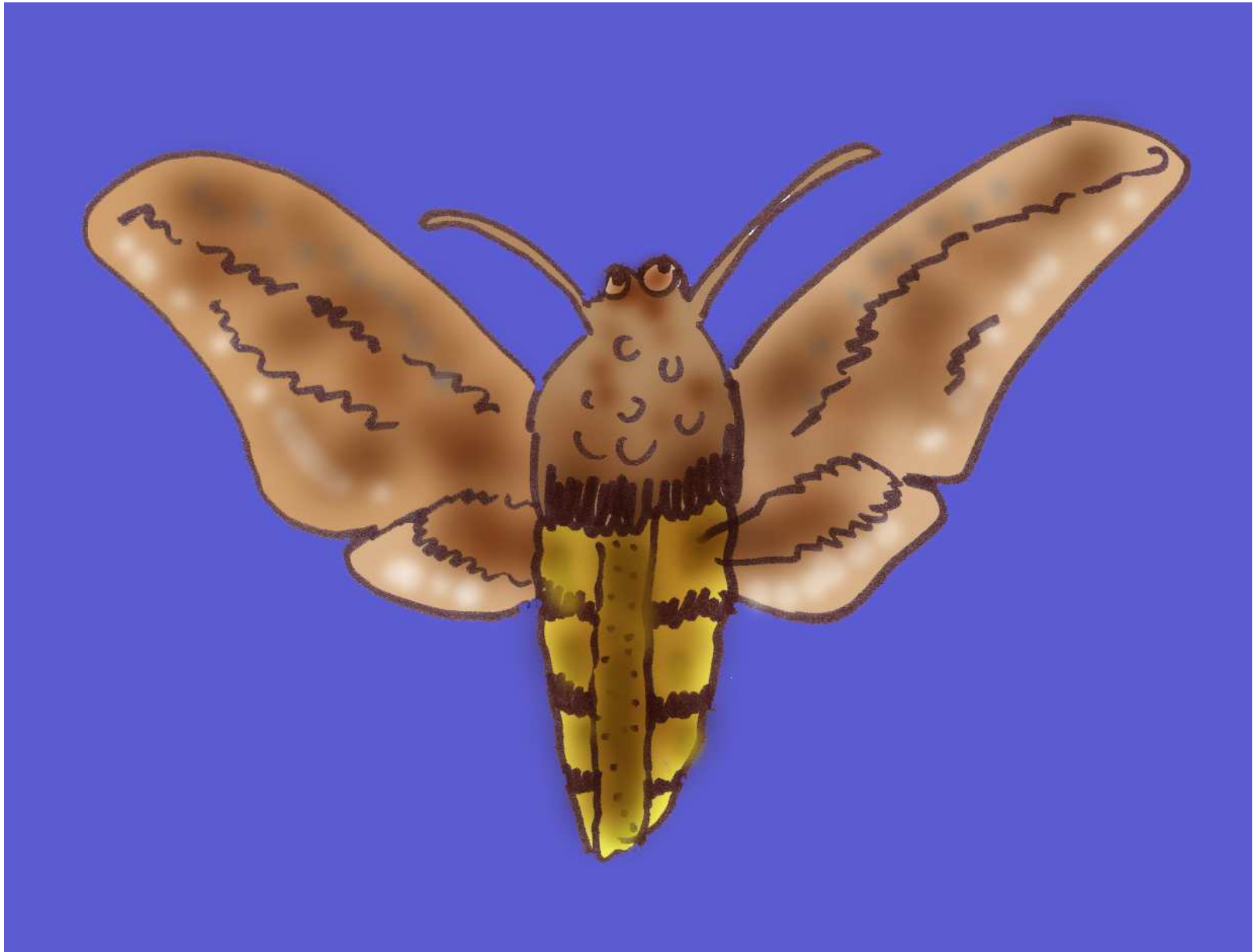


rush

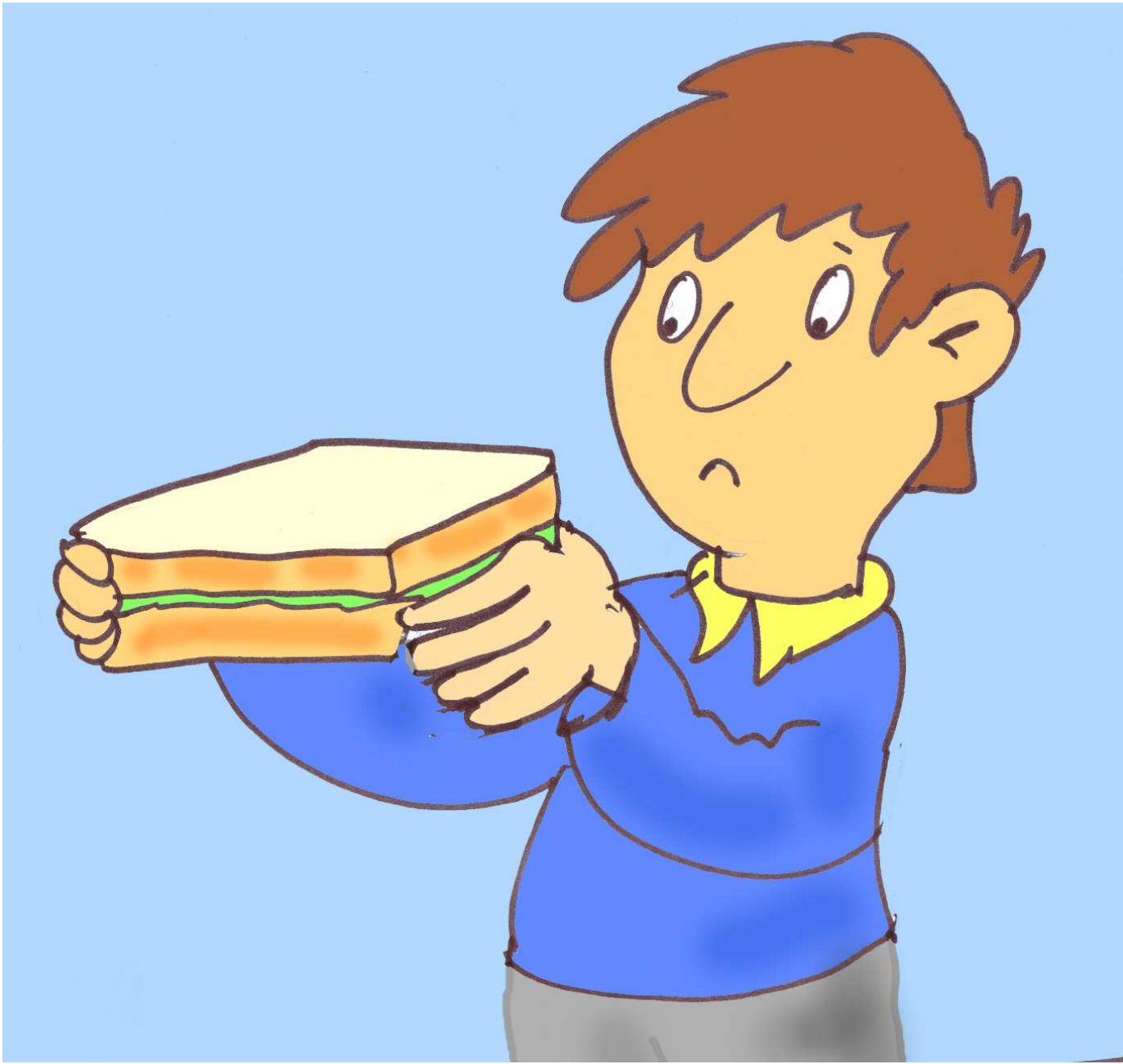
**th words**



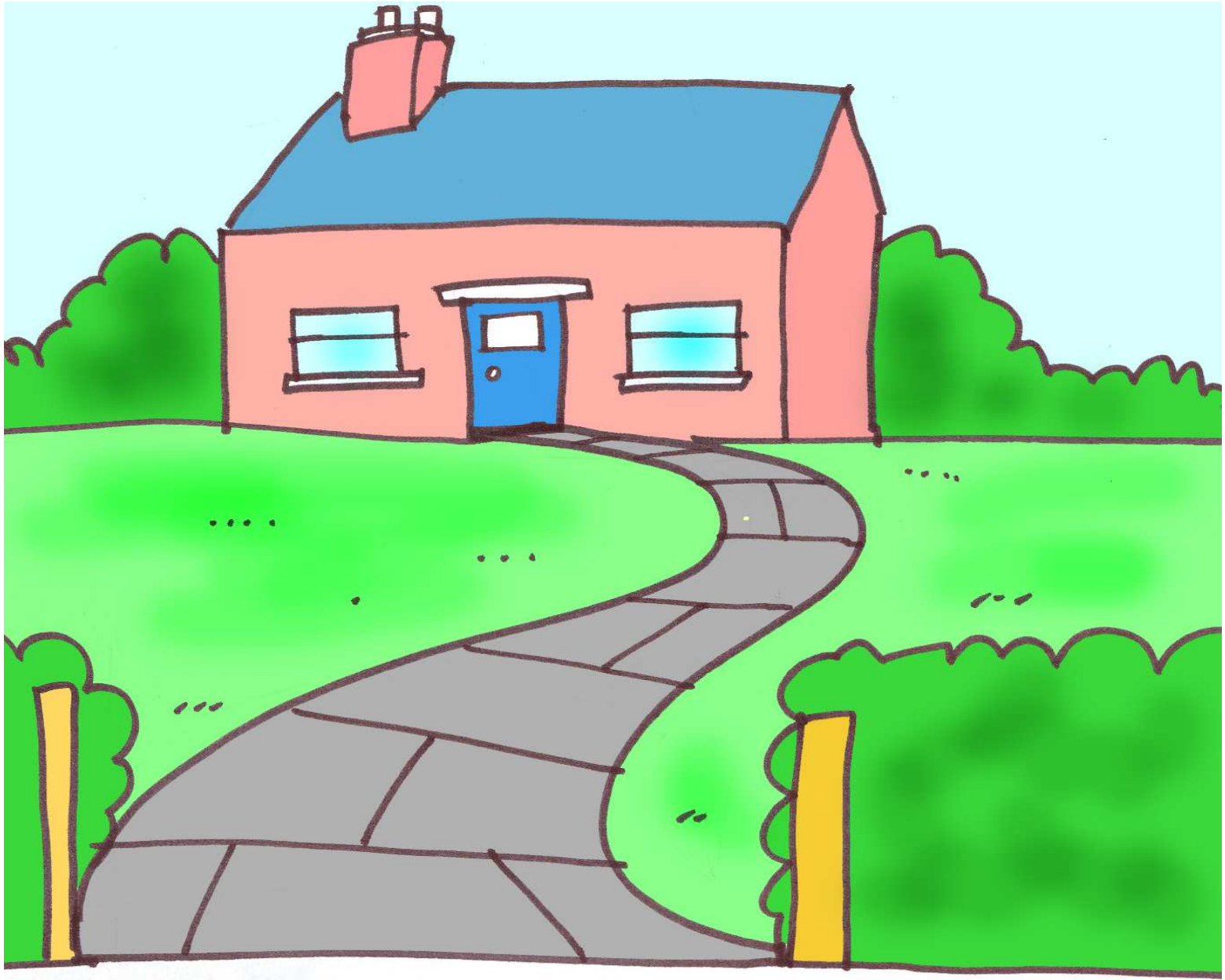
thin



moth



thick



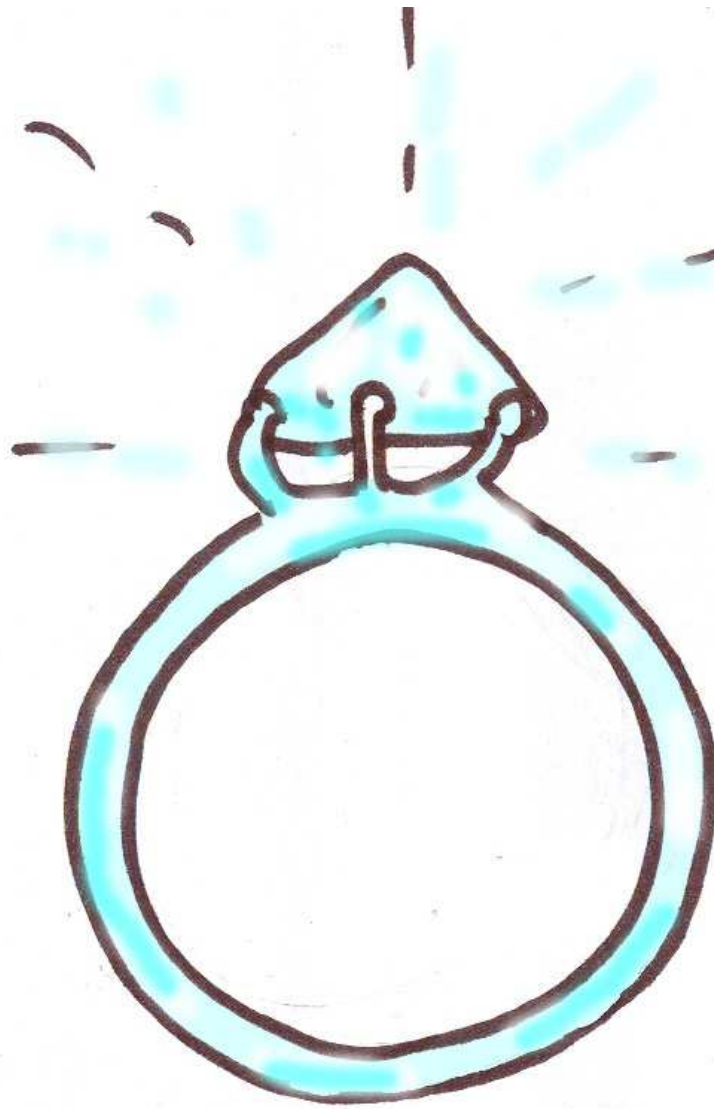
path



bath

ng words





ring



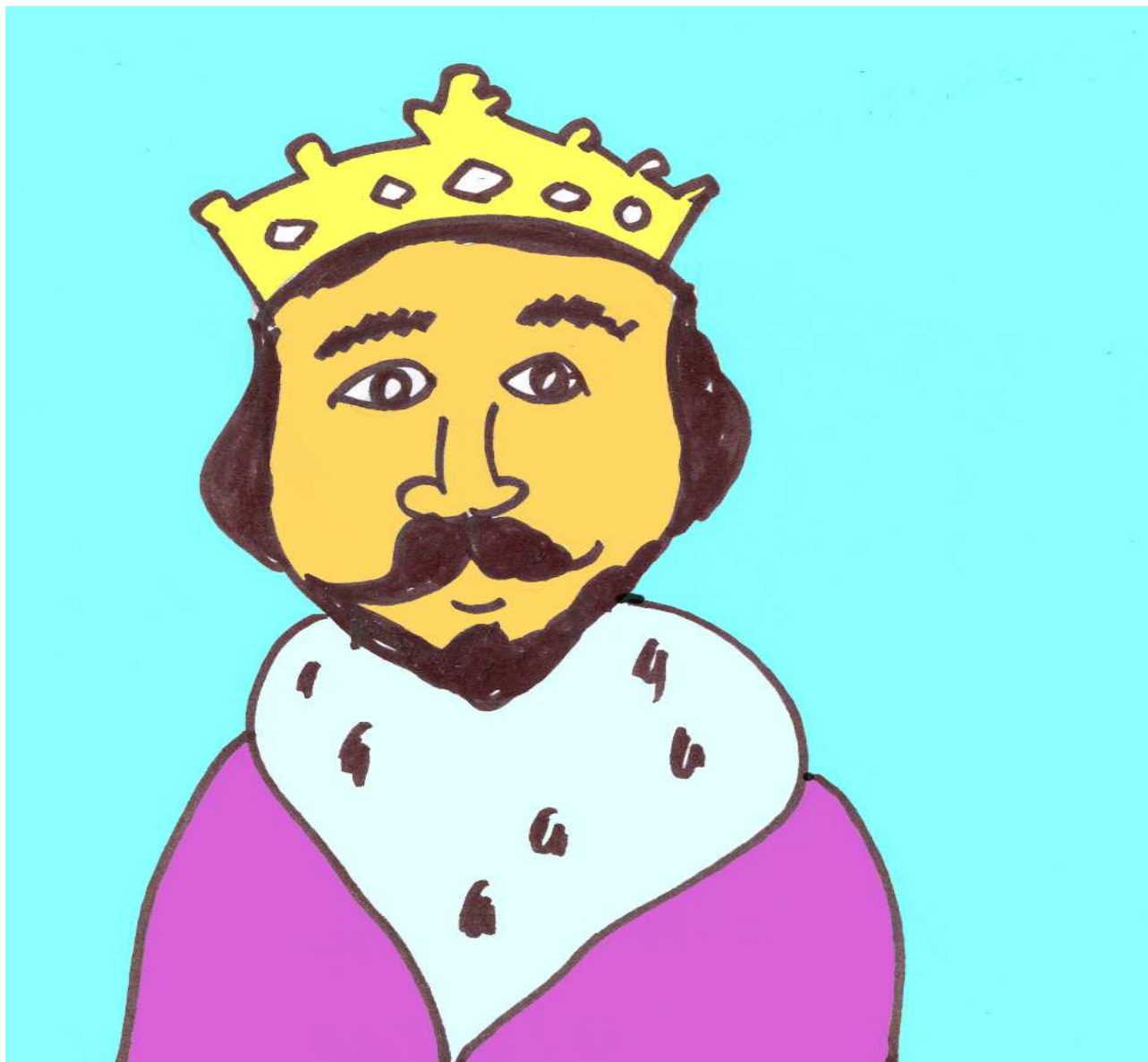
wing



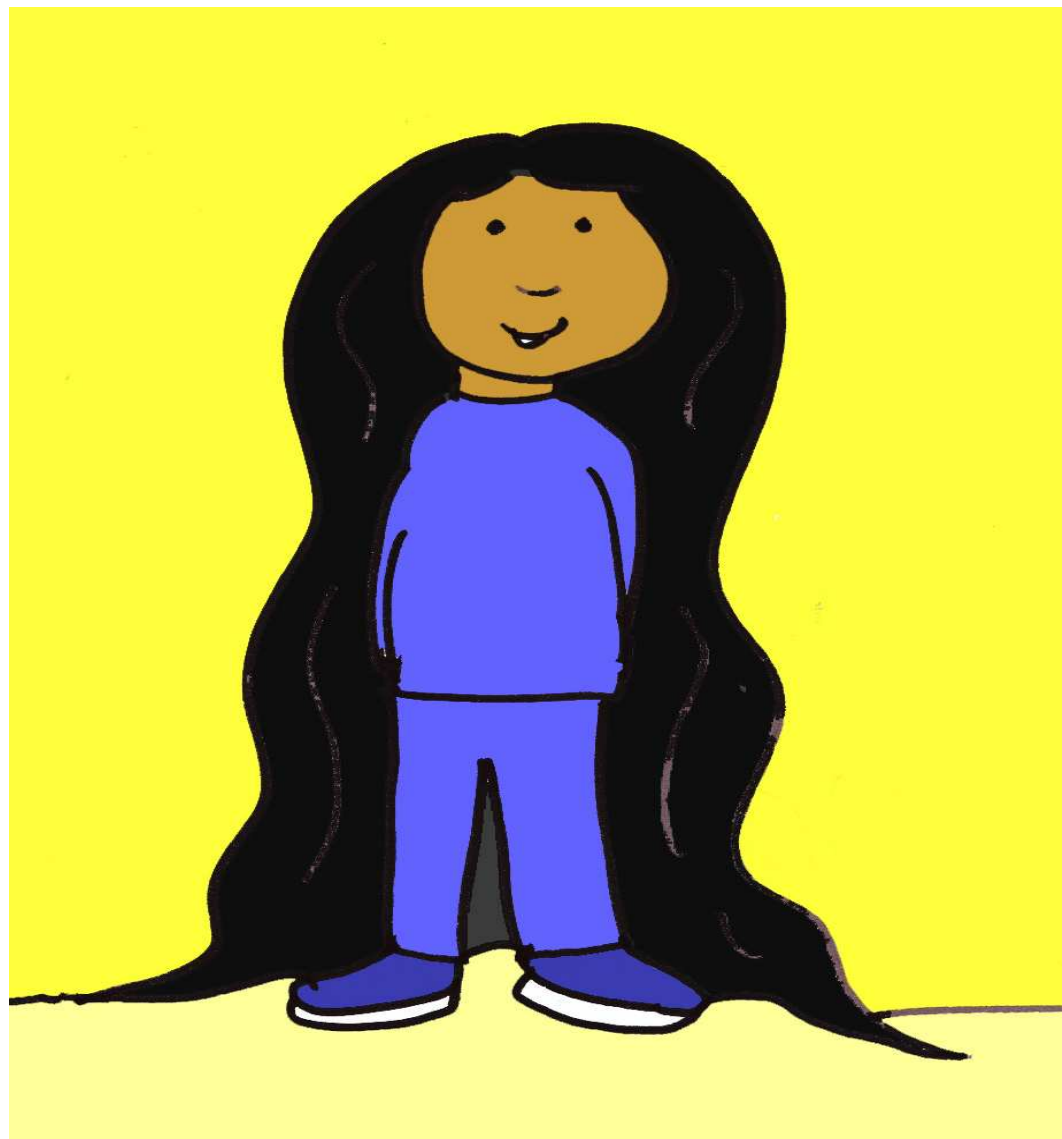
sing



rung



king



long



hang