

Talking Books

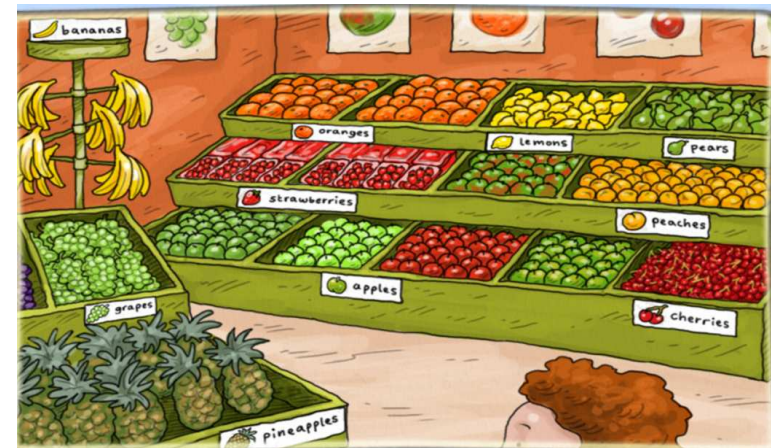
# The Fruit Counter



EMAS  
EAL Department  
1st Floor  
Leigh Town Hall  
Market Street  
Leigh  
WN71DY  
Telephone 01942 404075

Talking Books

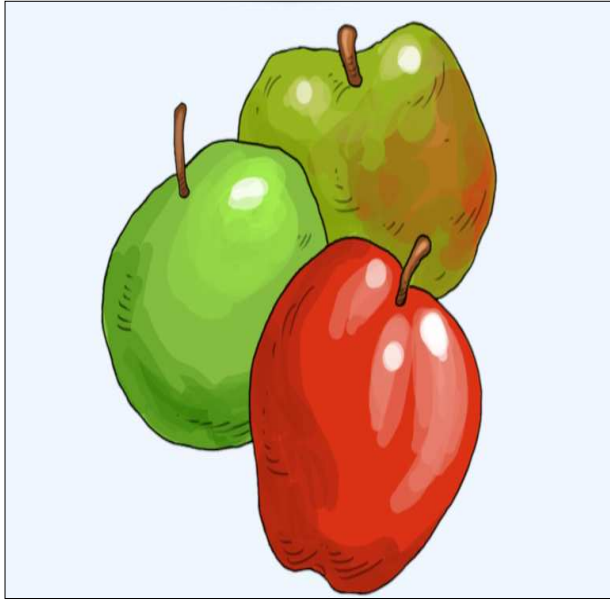
# The Fruit Counter



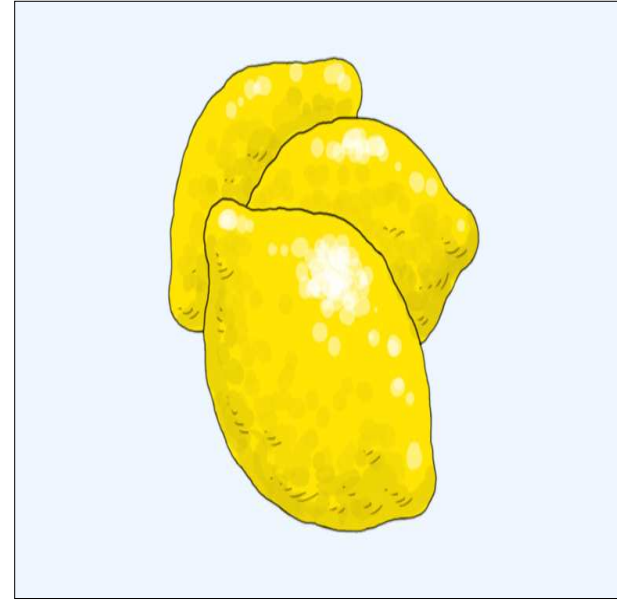
Produced by Wigan EMAS

Talking books are designed to encourage and develop new vocabulary with pupils whom are New to English.

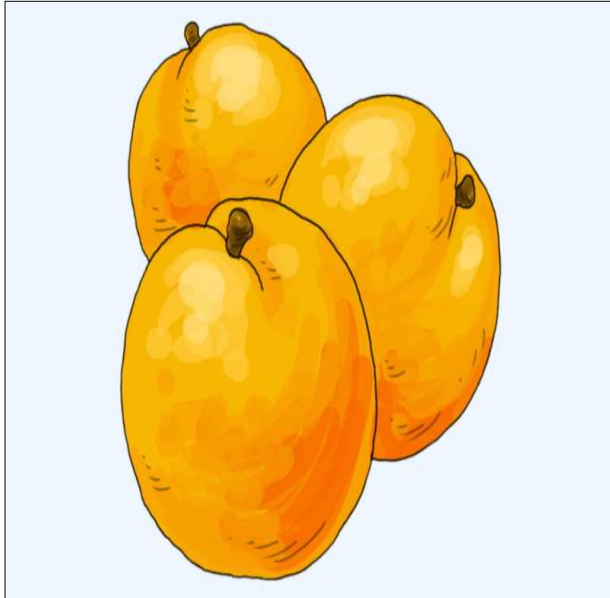
<b>Language Learning Objectives</b>		
<b>Language Functions</b>	Question and Answer	
<b>Sentence Structure</b>	What is it? This is a .....	
<b>Vocabulary</b>	oranges pears grapes lemons bananas	peaches apples cherries pineapples strawberries



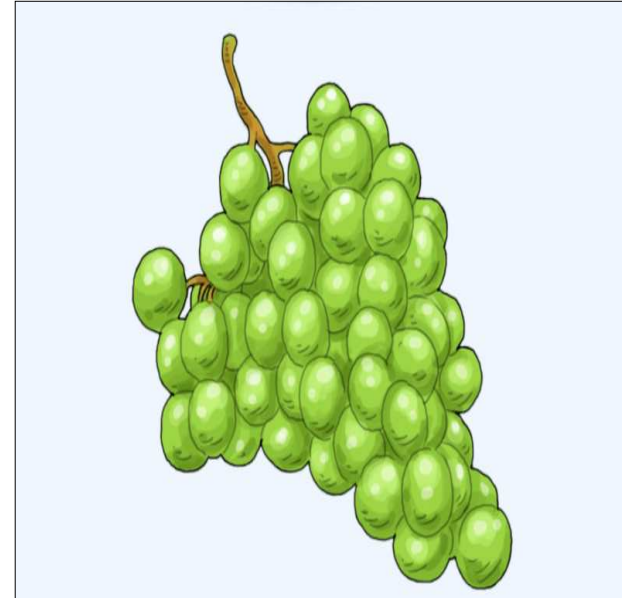
apples



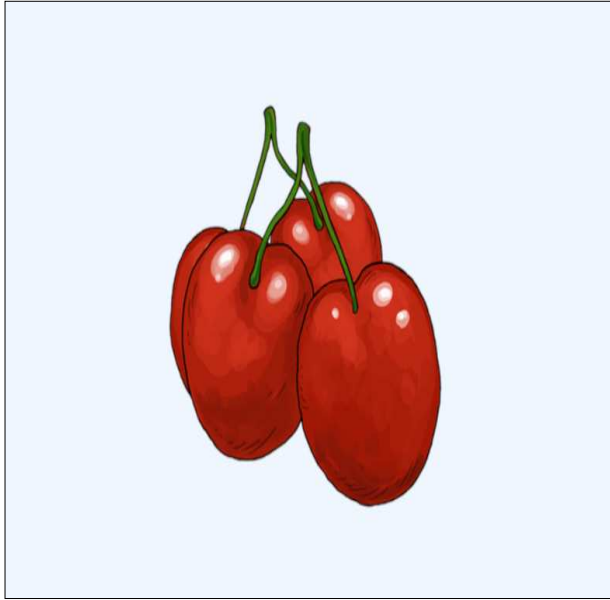
lemons



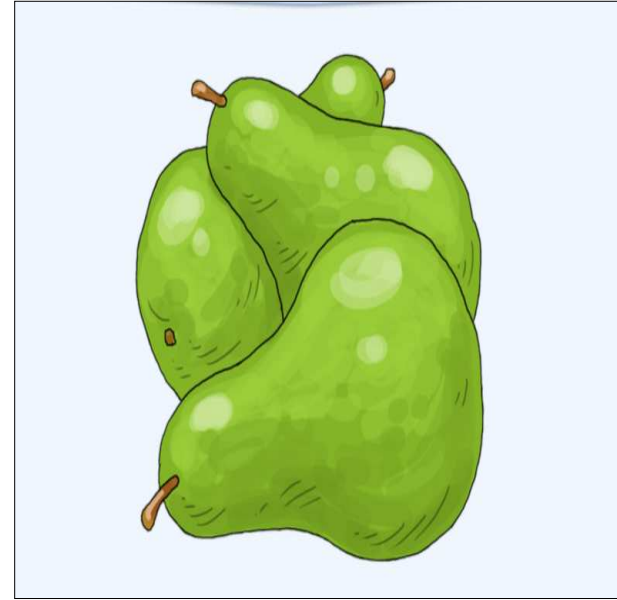
oranges



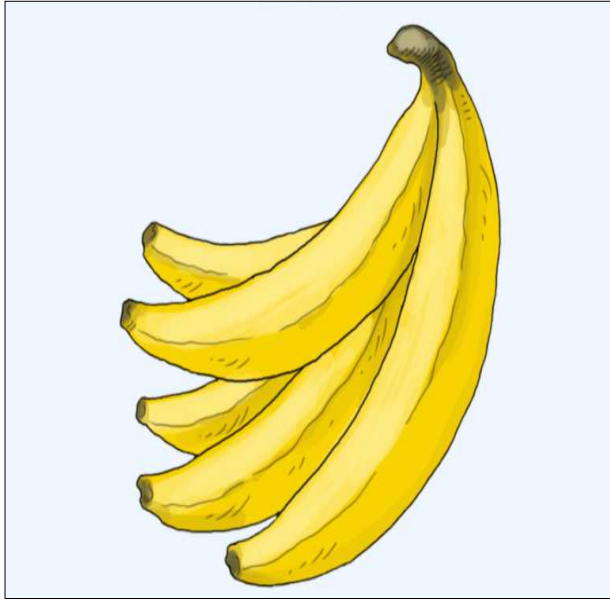
grapes



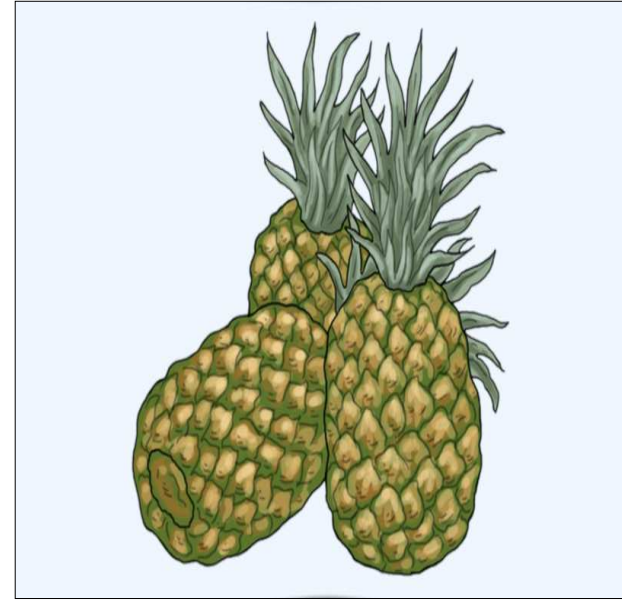
cherries



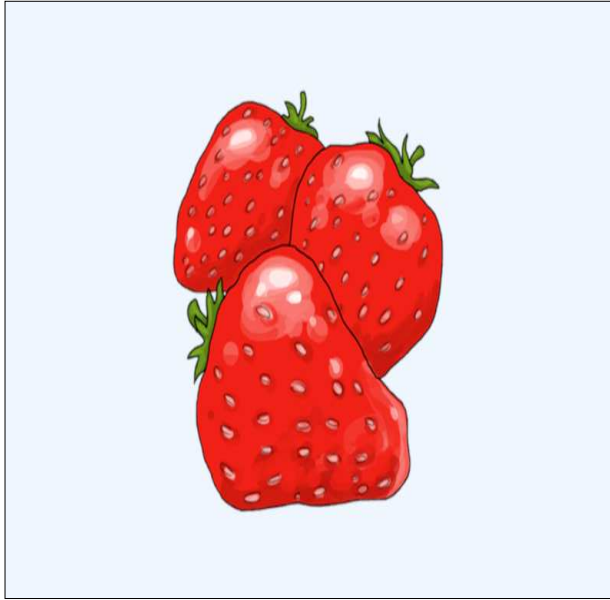
pears



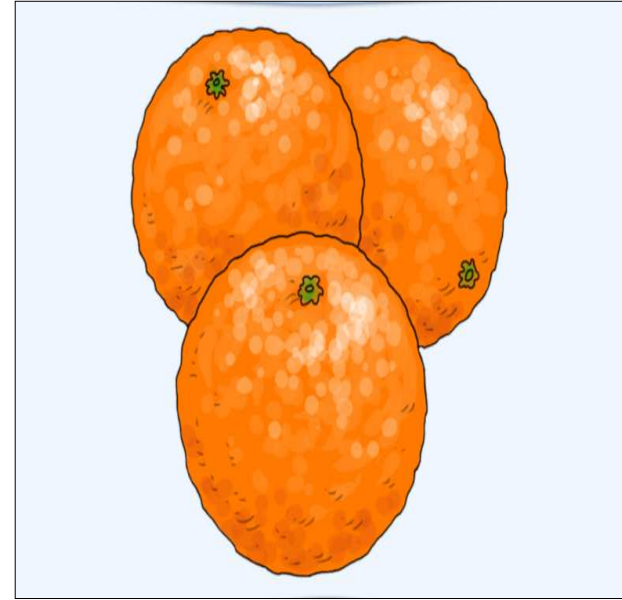
bananas



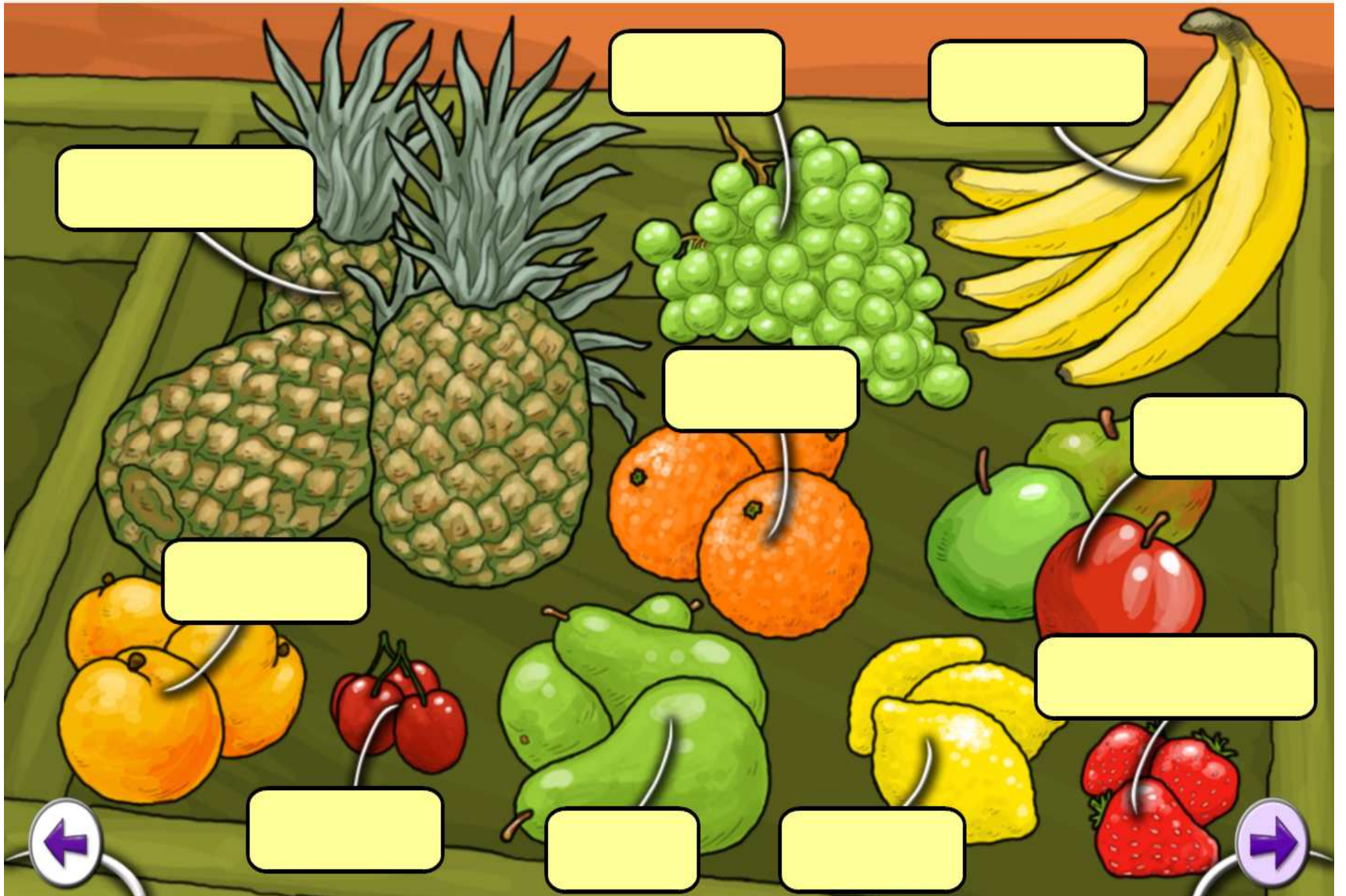
pineapple



strawberries



oranges



[Label box for Pineapple]

[Label box for Grapes]

[Label box for Bananas]

[Label box for Oranges]

[Label box for Apples]

[Label box for Lemons]

[Label box for Pears]

[Label box for Strawberries]

[Label box for Pears]

[Label box for Lemons]

