

Haigh Woodland Park & Haigh Hall

Stakeholder engagement session

February 2022

**Our People**

**Our Place**

**Our Future**

- Stuart Holden – Development Manager
- James Winterbottom - Director of Digital, Leisure and Wellbeing
- Colin Burden – Lead Consultant, Plincke
- Al and Al – Creative Directors

**Our People**

**Our Place**

**Our Future**

- Share the refined proposals within the scope of the Lottery project
- Outline the proposed package of external repairs and restoration to the Hall
- Introduce the Amphitheatre for a Tree
- Invite comment to inform planning and listed building applications
- Schedule the key project milestones through 2022

**Our People**

**Our Place**

**Our Future**

- Round 1 pass secured in March 2020
- Development phase commenced in February 2021
- Extensive technical surveys now largely complete
- Architectural & engineering proposals available for the key assets within scope
- Greater understanding of the activity & audience development opportunities
- Key partnerships established to support community & education programmes
- Project engineered within the available budget despite significant inflation & market factors
- Positive dialogue with the Lottery maintained throughout
- Target submission date for the round 2 application set for the end of April 2022

**Our People**

**Our Place**

**Our Future**

# Heritage Lottery Project - Primary objectives



- Repair and restore heritage at risk
- Increase the physical accessibility of the heritage assets within the Park
- Develop a supported and expanded volunteer network
- Establish a greater level of education provision within the park
- Support the local economy through jobs creation
- Create a unique best practice model of wellbeing delivery set within a heritage asset
- Establish a resourced long-term Woodland Management Plan
- Realise new commercial opportunities to sustain the restored assets
- Enhance the understanding of the rich social and industrial history of the park.

**Our People**

**Our Place**

**Our Future**

# Heritage Lottery Project - Plantation Gates & Lodges



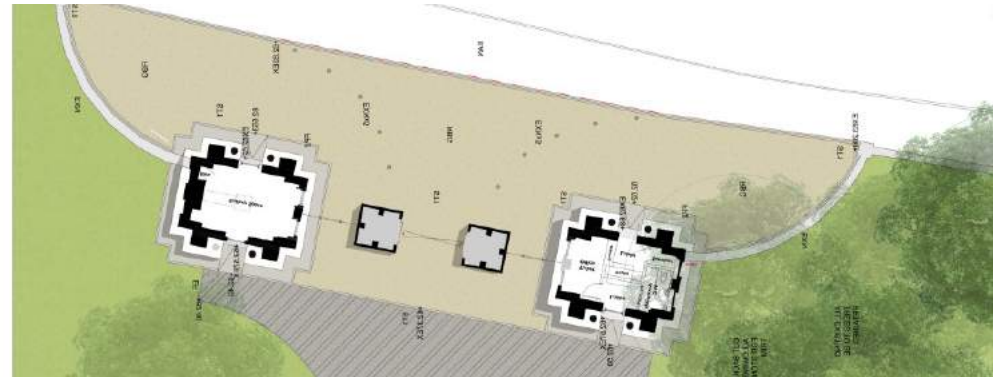
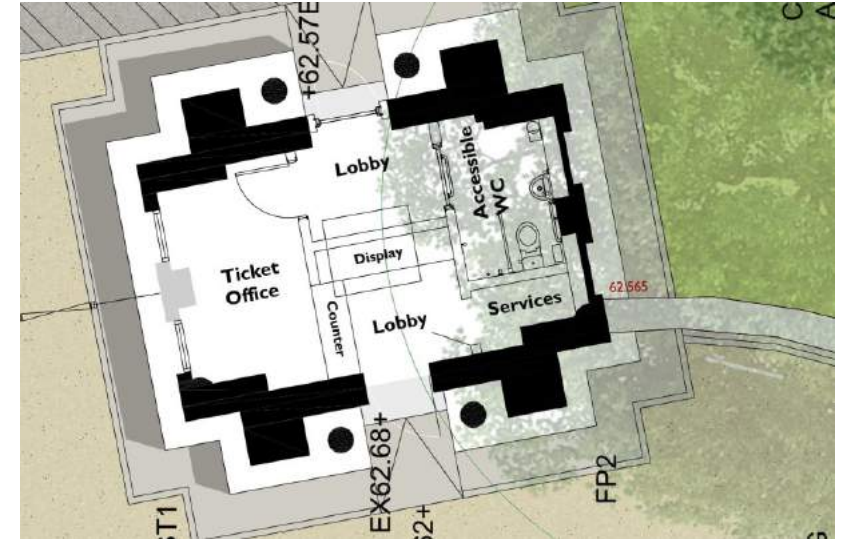
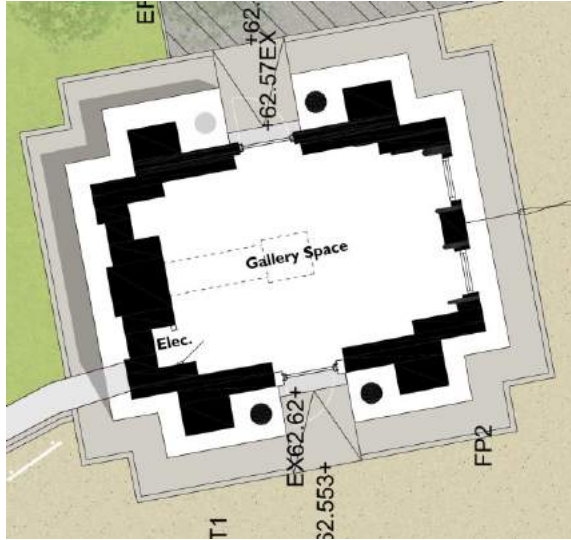
I Proposed West Elevation  
2200 1:100 @ A1

Our People

Our Place

Our Future

# Heritage Lottery Project - Plantation Gates & Lodges 1



Our People

Our Place

Our Future

# Heritage Lottery Project - Woodland Hub



- Sensitive & accessible location identified
- Long term investment into infrastructure
- Collection of modular container form buildings
- Toilet facilities, kiosk for seasonal refreshments and storage
- Controlled access to identified clearings for organised Woodland and Forest school activity

**Our People**

**Our Place**

**Our Future**



# Heritage Lottery Project - Woodland Hub



**Our People**

**Our Place**

**Our Future**

# Heritage Lottery Project - Bothy Cottage & Pavilion

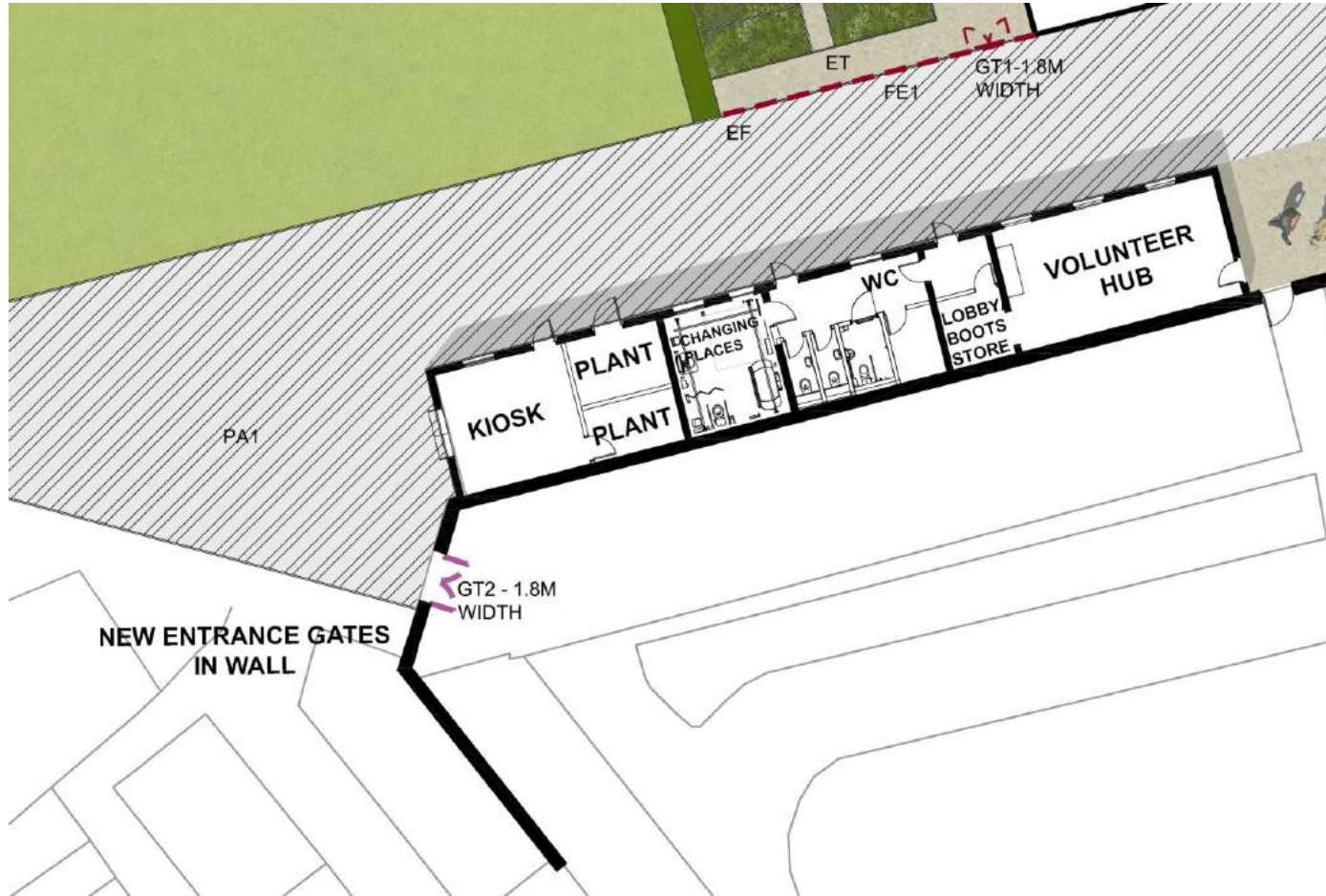


**Our People**

**Our Place**

**Our Future**

# Heritage Lottery Project - Bothy Cottage & Pavilion



- Volunteer hub to support current and future volunteers
- Public toilets
- Changing places to provide a fully inclusive offer
- Kiosk to support refreshment sales
- New entrance into the Walled kitchen garden supporting our ambition to enhance the Walled Gardens

**Our People**

**Our Place**

**Our Future**

# Heritage Lottery Project - Bothy Cottage & Pavilion 2



- 2 storey cottage & Pavilion
- First floor office facilities
- Ground floor community meeting space
- Flexible training space
- Toilets to support staff and the Pavilion
- Separate entrance to the Pavilion
- Improved access into the yard for controlled vehicle use

**Our People**

**Our Place**

**Our Future**

# Heritage Lottery Project - Bothy Cottage & Pavilion 3



- Reorganisation of the Bothy Yard
- Demolition of derelict structures
- Flexible area of hardstanding created
- Refurbishment of the Barn to create a semi enclosed indoor space
- Existing glasshouse retained and refurbished
- Community & volunteer growing zone created

**Our People**

**Our Place**

**Our Future**

# Heritage Lottery Project - Bothy Cottage & Pavilion 4

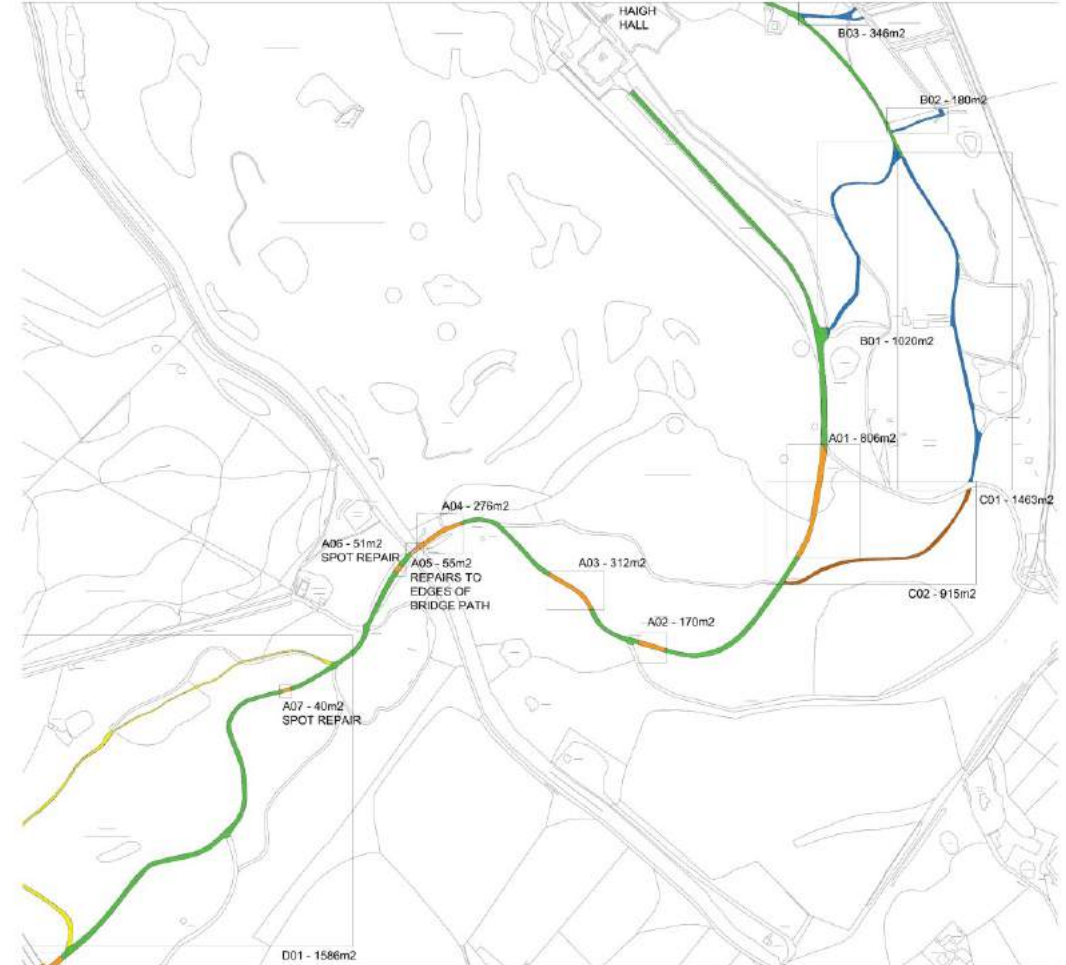
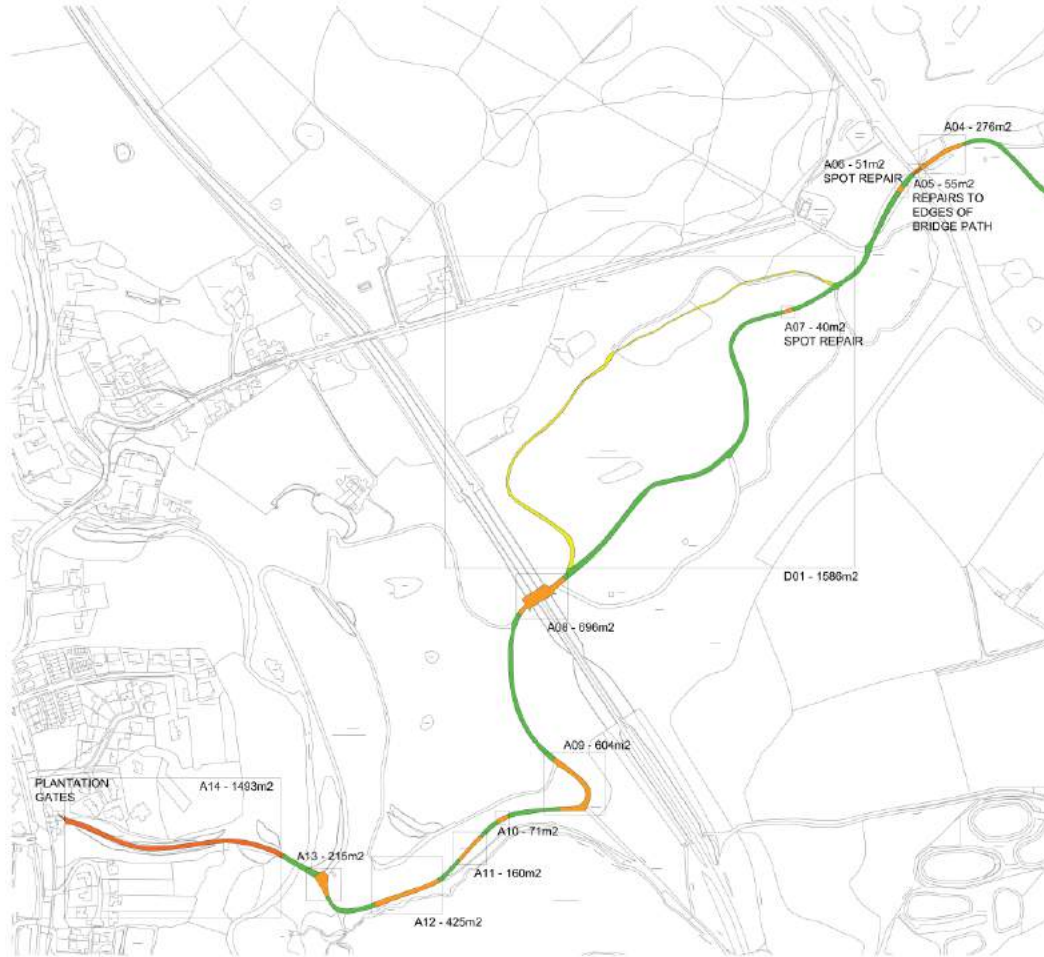


**Our People**

**Our Place**

**Our Future**

# Heritage Lottery Project - Footpath network

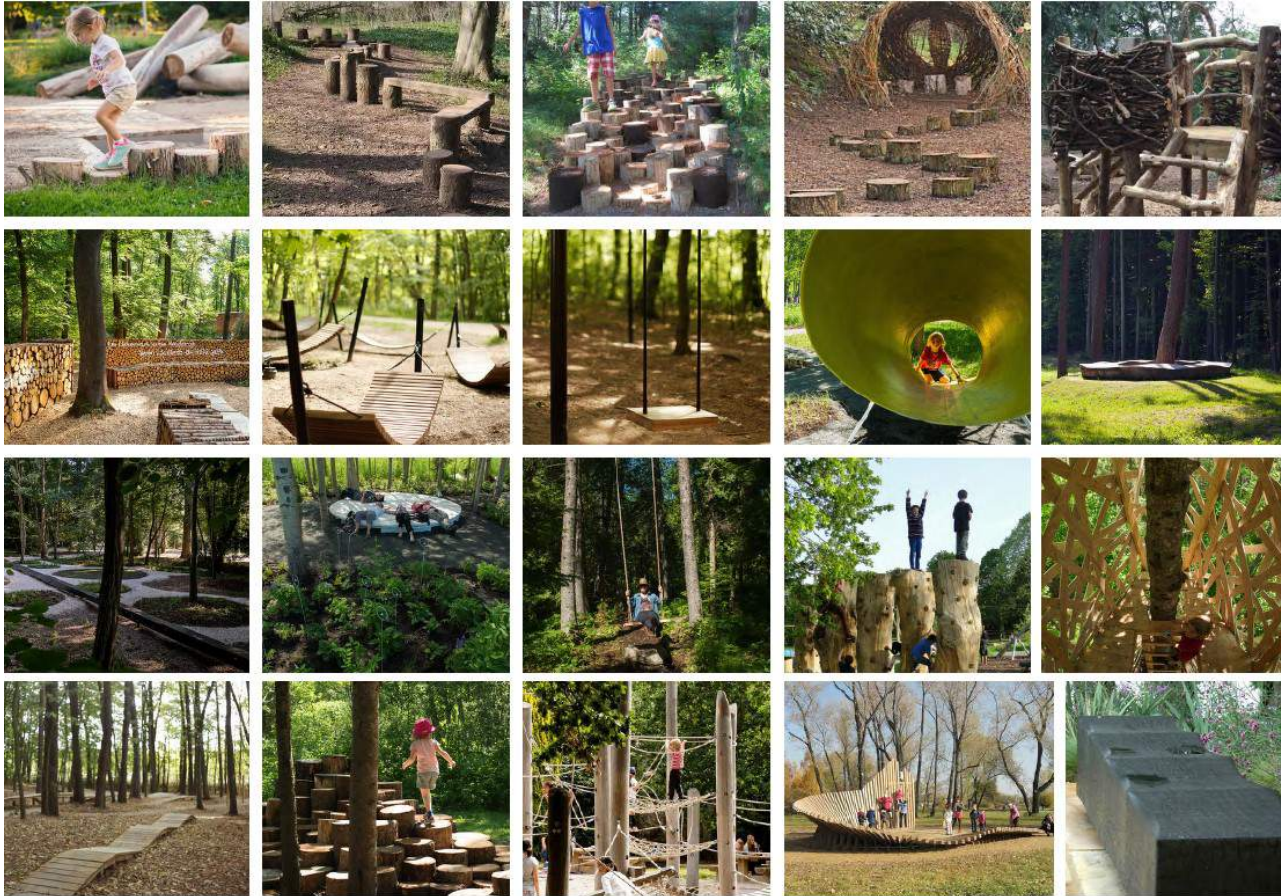


**Our People**

**Our Place**

**Our Future**

# Heritage Lottery Project - Play Trail



- Follows the repaired footpath routes
- Spaced and positioned sensitively to retain the character of the Plantations
- Focused on natural play value not standard play equipment
- Encourages exploration and informal physical activity
- Adds viability to the Woodland Hub and connects the Plantation Gates & Lodges
- Helps to disperse visitors across the park

**Our People**

**Our Place**

**Our Future**



# Heritage Lottery Project - Interpretation



**Our People**

**Our Place**

**Our Future**

# Heritage Lottery Project - Woodland Management



- Long term Woodland Management plan
- Priority package of capital investment
- Establishing clear character zones
- Addressing Invasive spaces
- Addressing immediate Tree condition issues
- Resourced programme of long term management
- Extensive volunteering opportunities

**Our People**

**Our Place**

**Our Future**

## Core objectives

- Increase the level of community focused activity
- Enhance the training & skills output
- Increase the parks contribution to health & wellbeing
- Enhance the level of understanding & appreciation of the sites history and culture

## New & enhanced partnerships

- Community rehabilitation delivery team
- Adult services
- Be Well team
- Wigan & Leigh College
- Support & strengthen current Friends groups

**Our People**

**Our Place**

**Our Future**

# Heritage Lottery Project - Activity development



Bothy Cottage & Pavilion & Yard	Plantation Gates & Lodges	Woodland Hub	Park as a whole
New Education partnership with the College	Volunteer opportunity	Forest school model	Woodland Management
Supports social prescribing & co-ordinated volunteer opportunities	Increases accessibility & understanding of the lower plantations	Outdoor adventure activity programme	Volunteering development
Community rehabilitation programme	Supports potential Land Train in the future	Birthday parties	Dementia friendly activity programme
Adult learning – Craft & Horticulture		Canal based activity programme	Horticultural projects
Mindfulness sessions		Informal exploration	Supported employment opportunities
Private hire opportunity		Nature led experiences	Wellbeing activity programme
Supports Outdoor adventure programme			Exploration trails

**Our People**

**Our Place**

**Our Future**

- Revenue project aims to sustain the improvements that the capital project will deliver
- Additional Community Activity & Volunteer development resource
- Additional Woodland & Landscape resources including apprenticeships
- Additional site support & visitor services team members to support the restored assets
- Training resource for team members and volunteers
- Equipment, activity delivery and marketing resources to support the Activity plan
- Enhanced levels of maintenance through effective co-ordination of team members, volunteers, students and community groups

**Our People**

**Our Place**

**Our Future**

# Heritage Lottery Project - Proposed changes to the round 1 project



- Omission of the car park accessed of Hall Lane
- Refinement of the Woodland Hub concept with a focus on long term infrastructure investment and activating new activity
- Reduction in the scope of works to the former Glasshouse foundation and ornamental pond area
- Footpath prioritised but retaining extensive works
- Future phased delivery of conservation works within the Plantations

**Our People**

**Our Place**

**Our Future**

# Haigh Hall – External repairs and restoration

- A programme of immediate and essential priority repairs actioned
- Extensive technical surveys completed to fully understand the condition
- Conservation led team engaged to develop a more extensive package of external repairs and restoration
- Conservation Management plan developed to inform the approach to the Hall
- Package of external fabric repairs required irrespective of the final use proposals
- Plans and Heritage Impact assessment developed to progress a listed building application

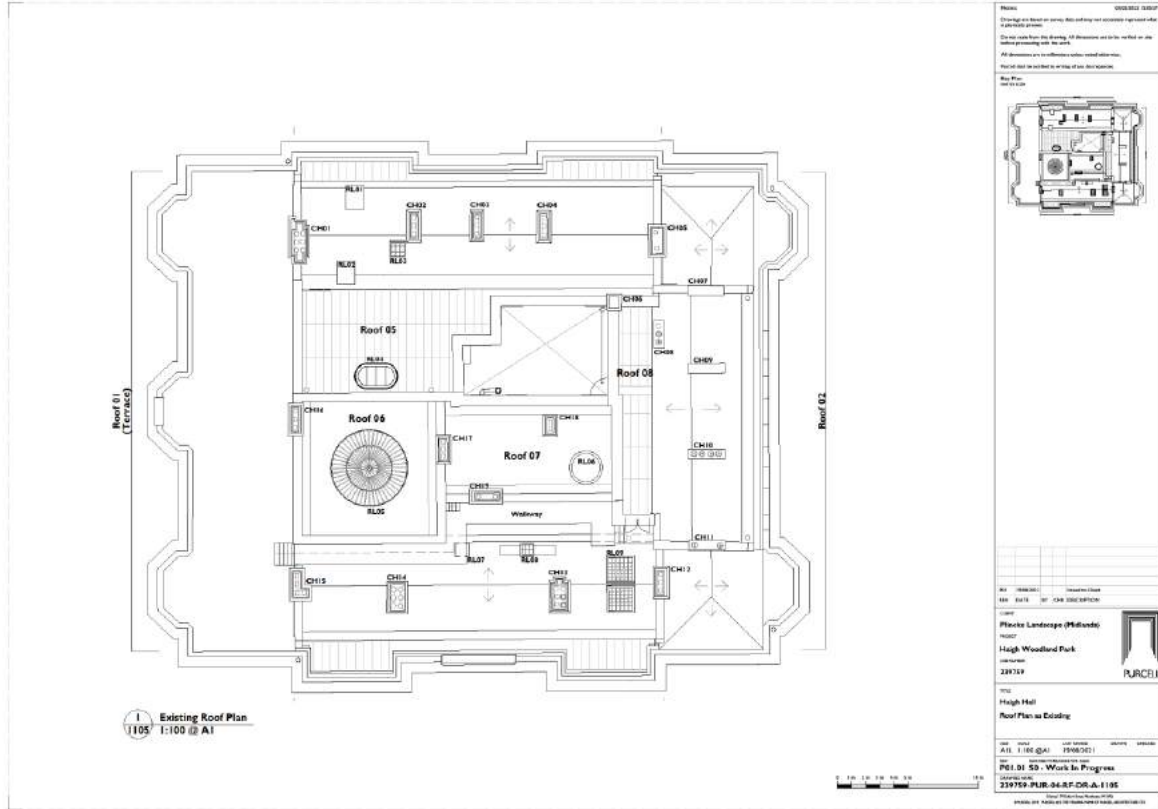


Our People

Our Place

Our Future

# Haigh Hall – External repairs & restoration



**Our People**

**Our Place**

**Our Future**



# Haigh Hall – External repairs & restoration



External repair and restoration package includes the following works :

- Rebuild and repair to the chimney stacks
- Roof repairs & additional roof drainage
- Parapet wall repairs
- Flat roof & slated roof repairs
- Stonework repairs & cleaning to remove heavy staining
- Balcony repairs and redecoration
- Renewal & repairs to rainwater goods
- Extensive window and door repairs and redecoration



**Our People**

**Our Place**

**Our Future**

- Project team absorbing the feedback from the vestibule conversation
- Investigating both capital and revenue funding sources options available and their timing
- Understanding the hospitality marketplace and assessing the options available to the Council
- Progressing the intent to embed Heritage and culture within the future vision for the Hall
- Intent to reengage in the spring to share the key themes from the consultation , visioning and business planning

**Our People**

**Our Place**

**Our Future**

# Amphitheatre for a Tree



**Our People**

**Our Place**

**Our Future**

- Full Transport Assessment & Travel plan commissioned to support the site development
- Analysing traffic flows and pedestrian counter data
- Understanding the impact on estate roads and surrounding road network
- Feasibility work underway to scope car park extensions to increase capacity
- Fundamentally reviewing access and egress into the car parks to alleviate congestion
- Identifying improvements to walking & cycling connections and infrastructure
- Defining the role of community focused transport options & promotion of non car based journeys
- **An additional circa 50 spaces to be available for Easter**

**Our People**

**Our Place**

**Our Future**

# Target project milestones



Haigh Woodland Park : Heritage, Nature and People project	Haigh Hall external fabric repairs
Planning & Listed building applications submitted late February	Listed building applications submitted late February
Round 2 application to the NLHF submitted at the end of April	Technical design and contractor procurement through to late summer
Round 2 decision expected in late summer	Target start on site November 2022
Additional staffing recruited by the end of 2022	Target completion of capital works by November 2023
Technical design and contractor procurement through to late summer 2023	
Target start on site September 2023	
Target completion of capital works by end of 2024	

**Our People**

**Our Place**

**Our Future**

Thank you for your continued interest and support

An opportunity to ask questions of the team

**Our People**

**Our Place**

**Our Future**