



I am writing to make a request under the FoI Act 2000. Please could you provide the following:

1. Children's Services Organogram

The most recent organogram or structure chart for your Children's Services department, showing:

- Job titles
- Team/service names (e.g. Education, SEND, Early Help, Social Care, Safeguarding)
- Reporting lines up to the Director of Children's Services
- Names of postholders where routinely published

Please include charts for separate divisions if relevant (e.g., Education vs. Social Care).

See attached structure charts (Children's Social Care, Prevention Early Help & Sufficiency and Education).

The Council will not release details of members of staff below third tier. Below are the senior staff responsible for these areas.

Ann Clarkson
Director - Prevention, Early Help & Sufficiency
Ann.Clarkson@wigan.gov.uk

Sandie Hayes
Practice Director – Children's Social Care
Sandie.Hayes@wigan.gov.uk

Cath Pealing
Assistant Director – Education
C.Pealing@wigan.gov.uk

2. School Improvement Strategy

A copy of the current School Improvement Strategy (or equivalent document), outlining your local authority's approach to school improvement, support, and intervention.

SI Strategy attached.

3. School Improvement Team: Size and Grades

Details of your School Improvement Team, including:

- The number of FTE staff currently in the team
- The job titles and pay grades of all posts within the team (e.g. School Improvement Adviser, Senior Officer, Team Manager)
- Whether any posts are vacant, seconded, or externally contracted

School Improvement Team: Size and Grades

Service Lead for Standards and Learning (FTE 1 but currently seconded to DfE for 2 days per week as a RISE advisor. Has other leadership duties outside of School Improvement) NJC G16

Two headteachers seconded on 1.5 days per week for length of RISE advisor secondment (with salary backfill paid to schools at appropriate ISR)

Education support and improvement coordinator (FTE 1 but currently seconded NJC G8)

Interim Education support and improvement coordinator (covering for secondment) FTE1 NJC G8

4. Details of any external contractors for School Improvement Activity

Please provide the details of any external contractors that you work with on school improvement. Please include:

- Name of the contractor
- Value and duration of the contract
- Number of schools supported through the contract

There is no one on an external contract for SI purposes

Ann Clarkson
Director Early Help, Prevention & Sufficiency

Service Lead
Fostering

Service Lead Children's
Residential Services/
Responsible Individual

Service Lead – Provider Services

Service Lead – Early Help and
Prevention

Safeguarding
Adolescence
Service

Service Lead – Together
for Adoption (Regional
Adoption Agency)

Service Manager
Joint
Commissioning
Children &
Young People

Service Manager
Commissioning

Family Hubs
Service
Manager

Service
Manager
Family Help

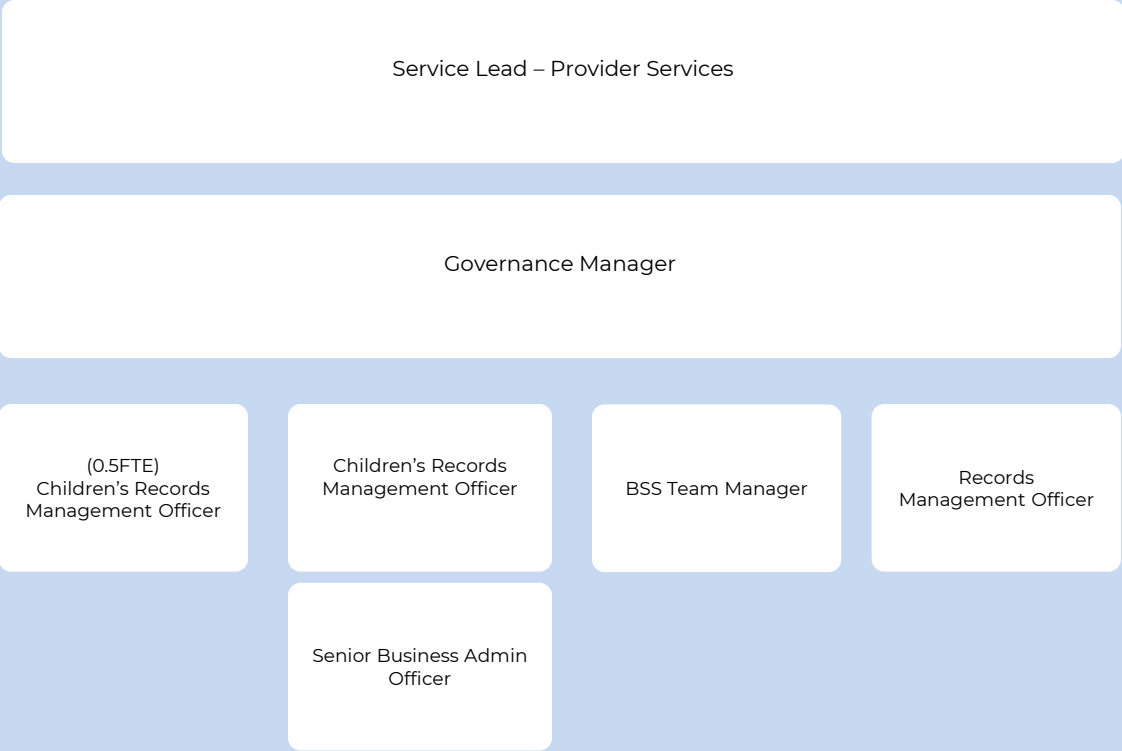
Service
Manager

Principal
Manager
Adoption
Support

Principal
Manager
Recruitment &
Assessment

Joint
Commissioning
Team Manager

Team Manager,
Commissioning
and Placements



BSS Team Manager

Senior BSS Officer

Senior BSS Officer

Senior BSS Officer

Senior BSS Officer

Senior BSS Officer

Senior BSS
Officer

BSS Officer

(0.5FTE) BSS
Officer

BSS Officer

BSS Officer

BSS Officer

BSS Officer

BSS Officer

BSS Officer

BSS Officer

BSS Officer

BSS Officer

BSS Officer

BSS Officer

BSS Officer

BSS Officer

BSS Officer

BSS Officer

BSS Officer

BSS Officer

BSS Officer

(0.5FTE) BSS
Officer

BSS Officer

BSS Officer

(0.5FT) BSS
Officer

BSS Officer

BSS Officer

BSS Officer

BSS Officer

BSS Officer

BSS Officer

BB Officer

BSS Officer

BSS Officer

BSS Officer

BSS Officer

BSS Officer

BSS Officer

BSS Officer

BSS Officer

BSS Officer

BSS Officer

BSS Officer

BSS Officer

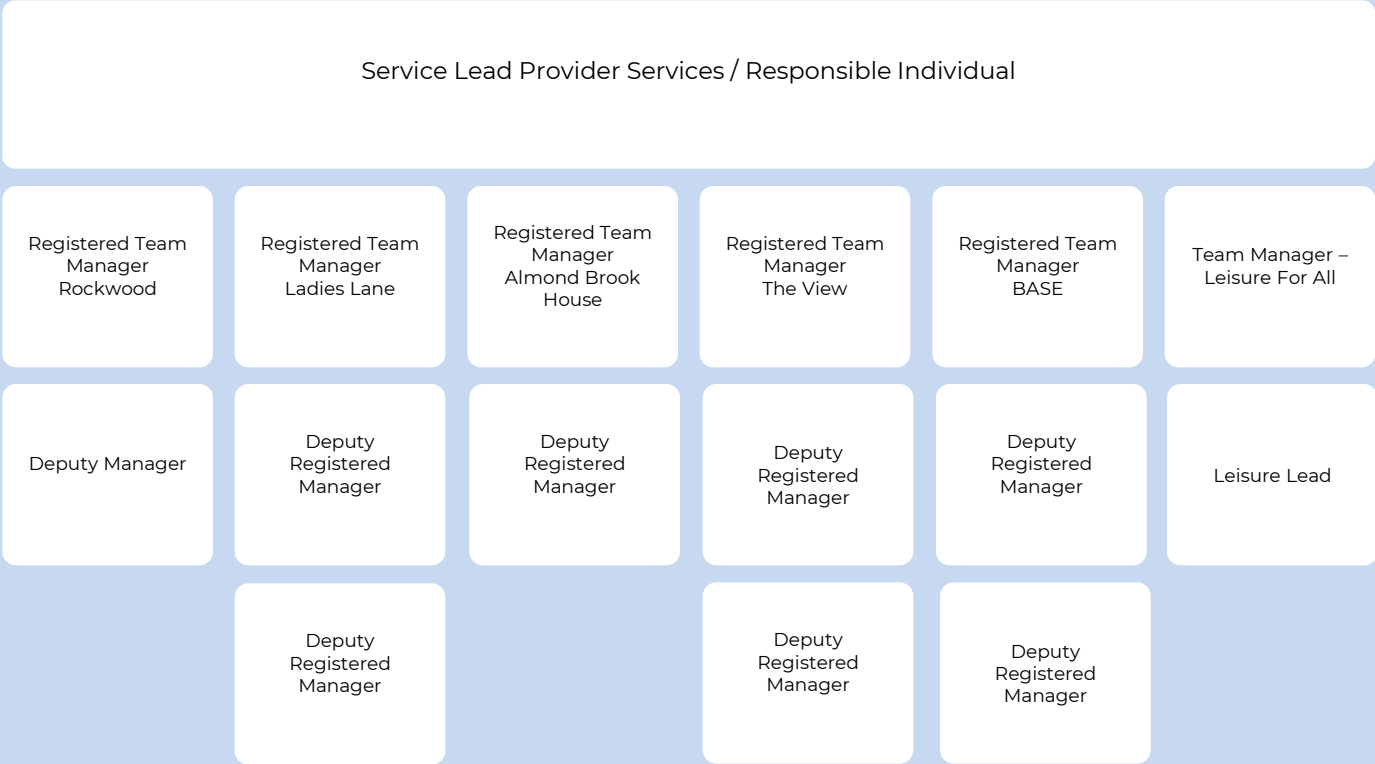
BSS Officer

BSS Officer

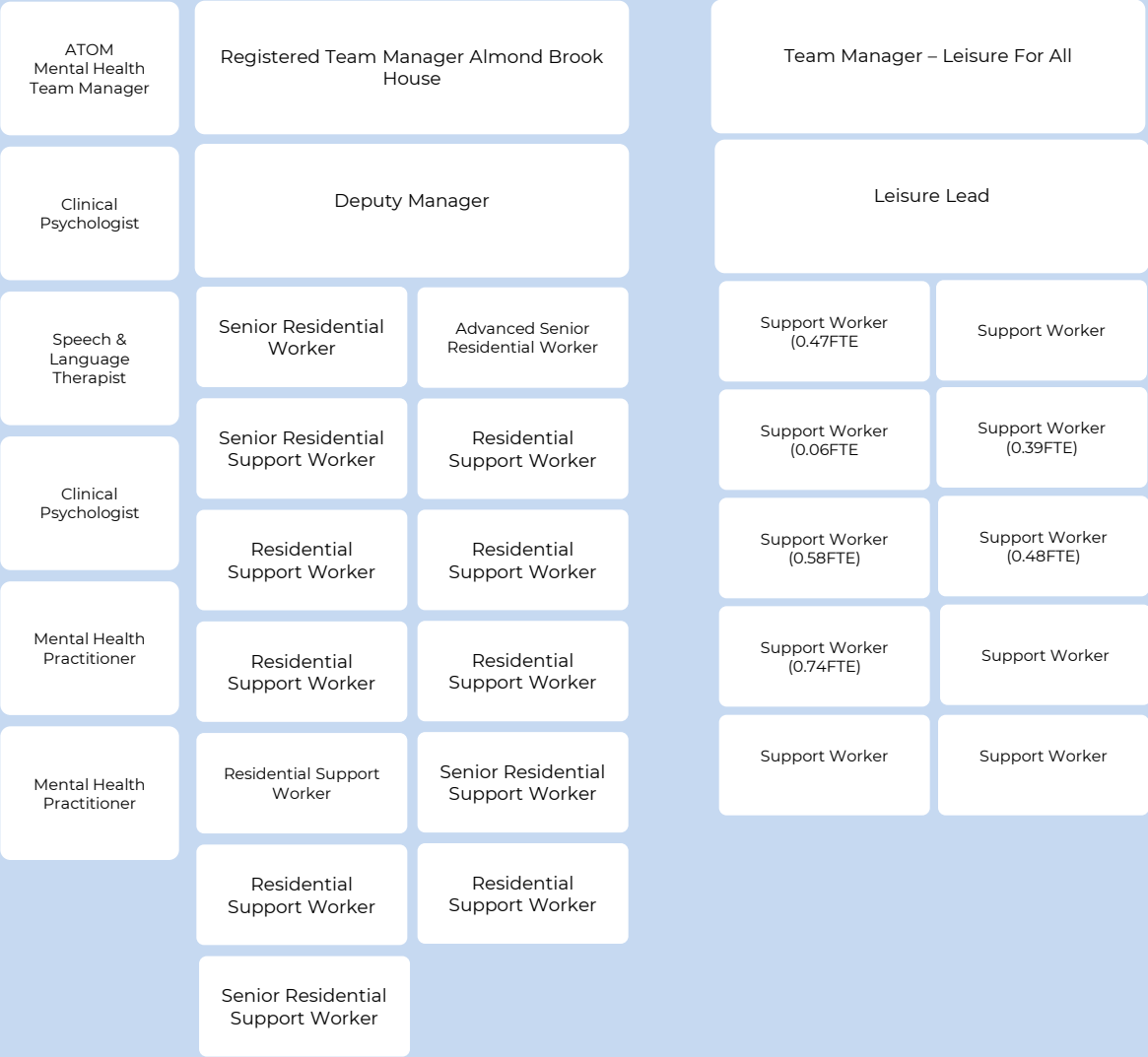
BSS Officer

BSS Officer

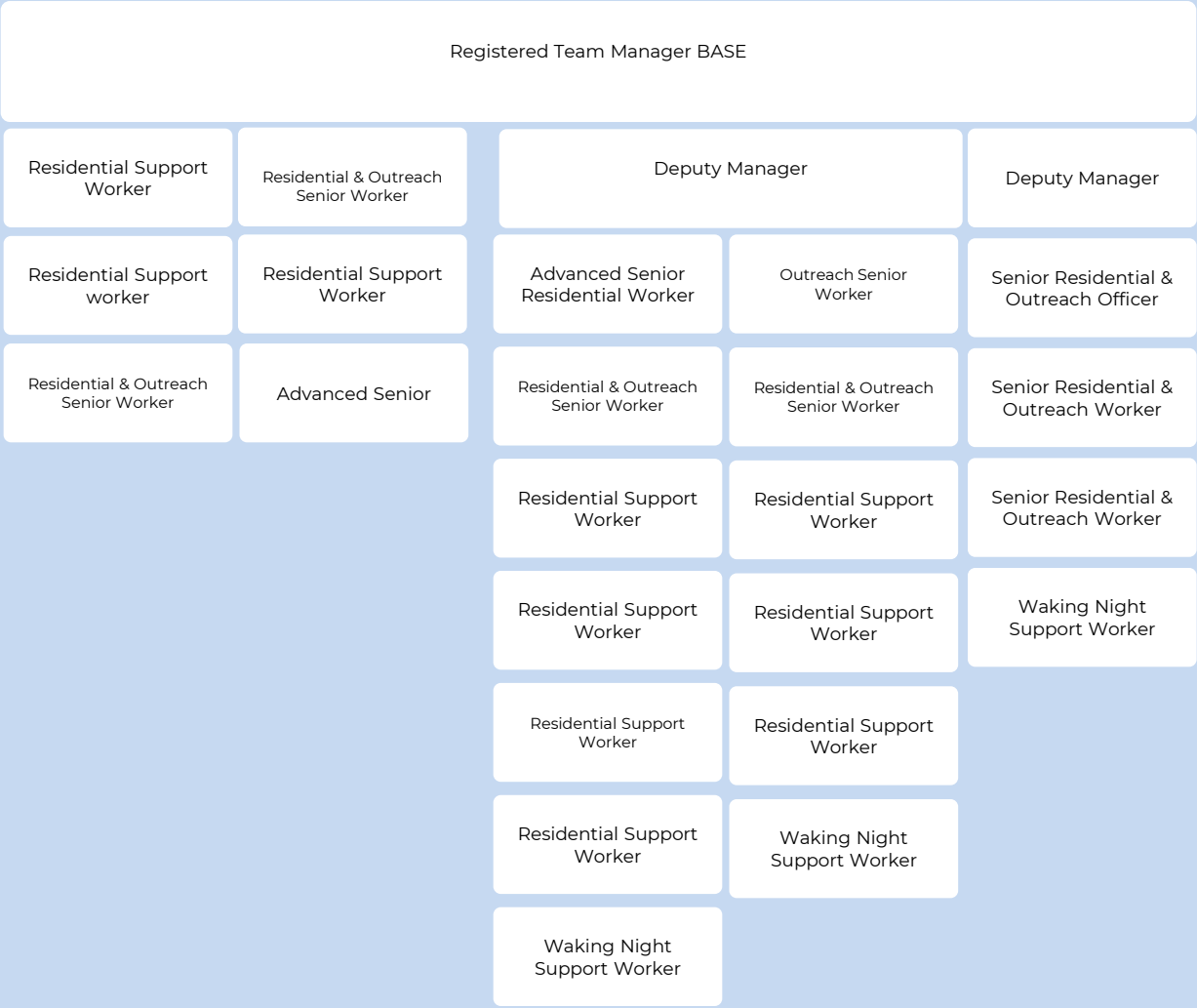
BSS Officer



Service Lead Provider Services / Responsible Individual



Service Lead Provider Services / Responsible Individual



Service Lead Provider Services / Responsible Individual

Registered Team Manager The View

Deputy Manager

Deputy Manager

Advanced
Senior
Residential
Worker

Senior
Residential &
Outreach
Worker

Senior
Residential &
Outreach
Worker

Residential
Support
Worker
(0.5FTE)

Residential
Support
Worker

Residential
Support
Worker

Residential &
Outreach
Worker

Senior
Residential &
Outreach
Worker

Residential
Support
Worker

Residential
Support
Worker

Senior
Residential
Worker

Peripatetic FT

Senior
Residential
Support
Worker
(0.5FTE)

Residential
Support
Worker

Senior
Residential &
Outreach
Worker

Registered Team Manager Ladies Lane

Deputy Manager

Deputy Manager

Senior
Residential
Worker
(0.81FTE)

Senior
Residential
Worker

Senior
Residential
Worker

Senior
Residential
Worker
(0.81FTE)

Residential
Worker
(0.49FTE)

Senior
Residential
Worker
(0.49FTE)

Senior
Residential
Worker
(0.81FTE)

Residential
Support
Worker

Senior
Residential
Worker
(0.5FTE)

Residential
Support
Worker
(0.54FTE)

Senior
Residential
Worker
(0.5FTE)

Residential
Support
Worker
(0.54FTE)

Residential
Support
Worker
(0.81FTE)

Residential
Support
Worker

Senior
Residential
Worker

Domestic
(0.4FTE)

Residential
Support
Worker
(0.81FTE)

Residential
Support
Worker
(0.68FTE)

Senior
Residential
Worker

Transport
Support
Worker

Residential
Support
Worker

Passenger
Assistant
(0.4FTE)

Senior
Residential
Worker

Service Lead Provider Services / Responsible Individual

Registered Team Manager – Rockwood

Deputy Manager

Senior Residential Worker

Senior Residential Worker

Senior Residential Worker

Senior Residential Worker

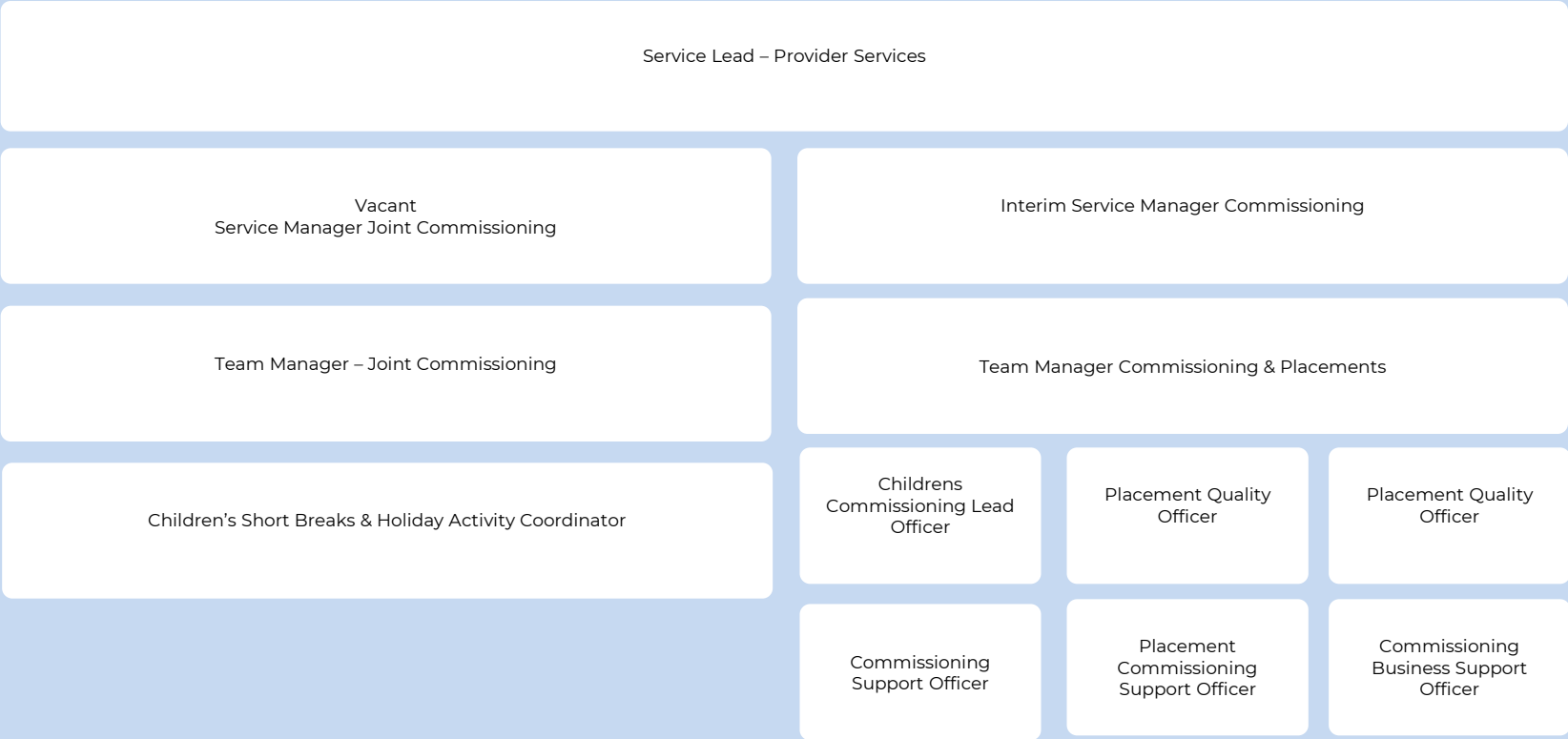
Residential Worker

Residential Worker

Residential Worker

Residential Worker

Advanced Senior
Residential Worker



Service Lead – Early Help and Prevention

Service Manager Family Help

Family Help Practice Manager – The Meadows

Deputy Practice Manager

Family Help Worker

Family Help Worker

Family Help Worker

Family Help Worker

Family Help Worker

Family Help Worker

Family Help Worker

Family Help Worker

Family Help Worker

Family Help Worker

Family Help SEND
Worker

Family Help Practice Manager – Clifton Street

Deputy Practice Manager

Family Help Worker

Family Help Worker

Family Help Worker

Family Help Worker

Family Help Worker

Family Help Worker

Family Help Worker

Family Help Worker

Family Help Worker

Family Help SEND
Worker

Family Help Worker

Family Help Practice Manager – Mornington
Road

Deputy Practice Manager

Family Help SEND
Worker

Family Help Worker

Family Help Worker

Family Help Worker

Family Help Worker

Family Help Worker

Family Help Worker

Family Help Worker

Family Help Worker

Service Lead – Early Help and Prevention

Service Manager Family Help

Family Help Practice Manager – Leigh

Deputy Practice Manager

Family Help Worker

Family Help Worker

Family Help Worker

Family Help Worker

Family Help Worker

Family Help Worker

Family Help Worker

Family Help Worker

Family Help Worker

Family Help Worker

Family Help SEND
Worker

Family Help Practice Manager – Formby
Avenue

Deputy Practice Manager

Family Help Worker

Family Help Worker

Family Help Worker

Family Help Worker

Family Help Worker

Family Help Worker

Family Help Worker

Family Help Worker

Family Help Worker

Service Lead – Early Help and Prevention

Family Services Hub Service Manager

Family Hub Lead – Formby Avenue	Family Hub Lead – The Meadows	Family Hub Lead – Clifton Street	Family Hub Lead – Mornington Road	Family Hub Lead – Leigh
Family Hub Coordinator	Family Hub Coordinator	Family Hub Coordinator	Family Hub Coordinator	Family Hub Coordinator
Early Years Worker	Early Years Worker	Early Years Worker	Early Years Worker	Early Years Worker
Early Years Worker	Early Years Worker	Early Years Worker	Early Years Worker	Early Years Worker
Family Help SEND Worker	Family Help Group Worker	Business Support	Early Years Worker	Family Help Group Worker
Family Help Group Worker	Business Support	Family Help Group Worker	Family Help Group Worker	Business Support
Business Support Officer			Business Support	
			Business Support	



Service Lead - Safeguarding Adolescence

Service Manager REACH

Quality Assurance
Officer

Youth and Community
Practice Manager

ASB Rapid Response Coordinator

Senior Youth &
Community
Voice Worker

Youth &
Community
Worker (0.5FTE)

Youth &
Community
Diversity
Worker

Community
Worker

Youth &
Community
Worker

Youth &
Community
Worker

Youth &
Community
Worker

Youth &
Community
Worker

Senior
Youth &
Community
Worker

Youth &
Community
Worker

Youth &
Community
Worker

Youth &
Community
Worker

Youth &
Community
Worker

Youth &
Community
Worker

Youth &
Community
Worker

Service Lead - Safeguarding Adolescence

Service Manager REACH

Team Manager – Complex Safeguarding
(CSE & DA)

Team Manager CST (CCE & MFH)

Deputy Team Manager

Social Worker

Social Worker

Social Worker

CE Worker

Missing from Home
Worker

Social Worker

CSE Worker (0.6FTE)

CSE Worker

Missing From Home
Worker

CSE Worker

Missing From Home
Worker (0.8FTE)

CST Business
Coordinator

CE Parenting Worker

Service Lead - Safeguarding Adolescence

Service Manager REACH

Practice Manager Youth Justice

Practice Manager Youth Justice

Deputy Practice Manager

Youth Justice
Worker

Youth Justice
Worker

Community
Coordinator

Deputy Practice
Manager

Youth Justice
Worker (0.9FTE)

Deputy Practice Manager
(0.9FTE)

Youth Justice
Worker

Youth Justice
Worker

Youth Justice
Worker

Restorative
Practitioner

Youth Justice
Worker

Youth Justice
Worker (0.8FTE)

Youth Justice
Worker

Youth Justice
Worker

Youth Justice
Worker (0.9FTE)

Restorative
Practitioner

Youth Justice
Worker

Youth Justice
Worker

Education,
Training &
Employment
Worker

YJ Turnaround
Worker

Community
Deal Worker

Education,
Training &
Employment
Worker

Restorative
Practitioner

Service Lead - Safeguarding Adolescence

Service Manager REACH

Team Manager – Staying Together Team

Youth Justice Coordinator

Senior Support Practitioner

Intensive Adolescent Support Worker

Youth Justice Support Worker

Business Support Officer

Intensive Adolescent Support Worker

Youth Justice Support Worker

Intensive Adolescent Support Worker

Intensive Adolescent Support Worker

Youth Justice Support Worker

Intensive Adolescent Support Worker

Youth Justice Support Worker

Intensive Adolescent Support Worker

Service Lead – Together for Adoption (Regional Adoption Agency)

Principal Manager – Recruitment and Assessment

Practice Manager

Practice Manager
(0.5FTE)

Adoption
Engagement Officer

Training &
Support
Coordinator

Practice Manager
(0.8 FTE)

Social Worker

Social Worker

Social Worker

Social Worker

Social Worker

Social Worker

Social Worker

Social Worker

Social Worker

Social Worker

Service Lead – Together for Adoption (Regional Adoption Agency)

Adoption Support Principal Manager

Family Support Worker (0.5FTE)

Adoption Support Practice Manager

Adoption Support Practice Manager

Adoption Support Practice Manager (

Social Worker (0.6FTE)

Adoption Support Worker

Adoption Support Worker

Social Worker (0.8FTE)

Adoption Support Worker (0.5FTE)

Social Worker (0.6FTE)

Social Worker (0.8FTE)

Family Support Worker

Adoption Support Worker (0.6 FTE)

Family Support Worker

Social Worker

Social Worker

Social Worker (

Social Worker

Social Worker (0.6FTE)

Administration Manager

Data Intelligence Officer (0.5FTE)

Panel Advisor

Business Support Assistant

Panel Administrator

Business Support Assistant (0.6FTE)

Business Support Assistant

Sandie Hayes
Practice Director - Children's Social Care

Service Lead - Children's Social
Care Workforce and Quality
Assurance and Principal Social
Worker

Service Lead – Children's
Safeguarding

Service Lead – Localities,
Academies & CWD

Service Lead – Integrated Front
Door, Duty & Assessment

Service Lead – Children in Care,
Care Leavers & Adoption

Service
Manager
Locality
Teams

Service
Manager
Locality
Teams &
CWD

Service
Manager
Integrated
Front Door

Service
Manager
Complex
Safeguarding
& Duty

Service Manager

Service Lead Localities, Academies and CWD

Service Manager

Team Manager Wigan East & West 1

Team Manager Wigan East & West 2

Team Manager Wigan Central 1

Advanced Practitioner

Advanced Practitioner

Advanced Practitioner

6 x Social Workers

4x Social Worker

5 x Social Worker

2 x Family Support
Worker

Family Support
Worker

Family Support
Worker

Service Lead Localities, Academies and CWD

Service Manager

Team Manager Wigan North 1

Team Manager Leigh 1

Team Manager Tyldesley & Atherton 1

Team Manager Lowton & Golborne 1

Advanced Practitioner

Advanced Practitioner

Advanced Practitioner

Advanced Practitioner

5x Social Worker

6 x Social Worker

6 x Social Worker

6 x Social Worker

Family Support
Worker

Family Support
Worker

Family Support
Worker

Family Support
Worker

Service Lead Localities, Academies and CWD

Service Manager

Team Manager Wigan Central Academy

Team Manager Wigan East & West Academy

Team Manager Leigh Academy

Advanced Practitioner

Advanced Practitioner

Advanced Practitioner

6 x Social Worker

5 x Social Worker

5 x Social Worker

Family Support
Worker

2 x Family Support
Worker

Family Support
Worker

Service Lead Localities, Academies and CWD

Service Manager

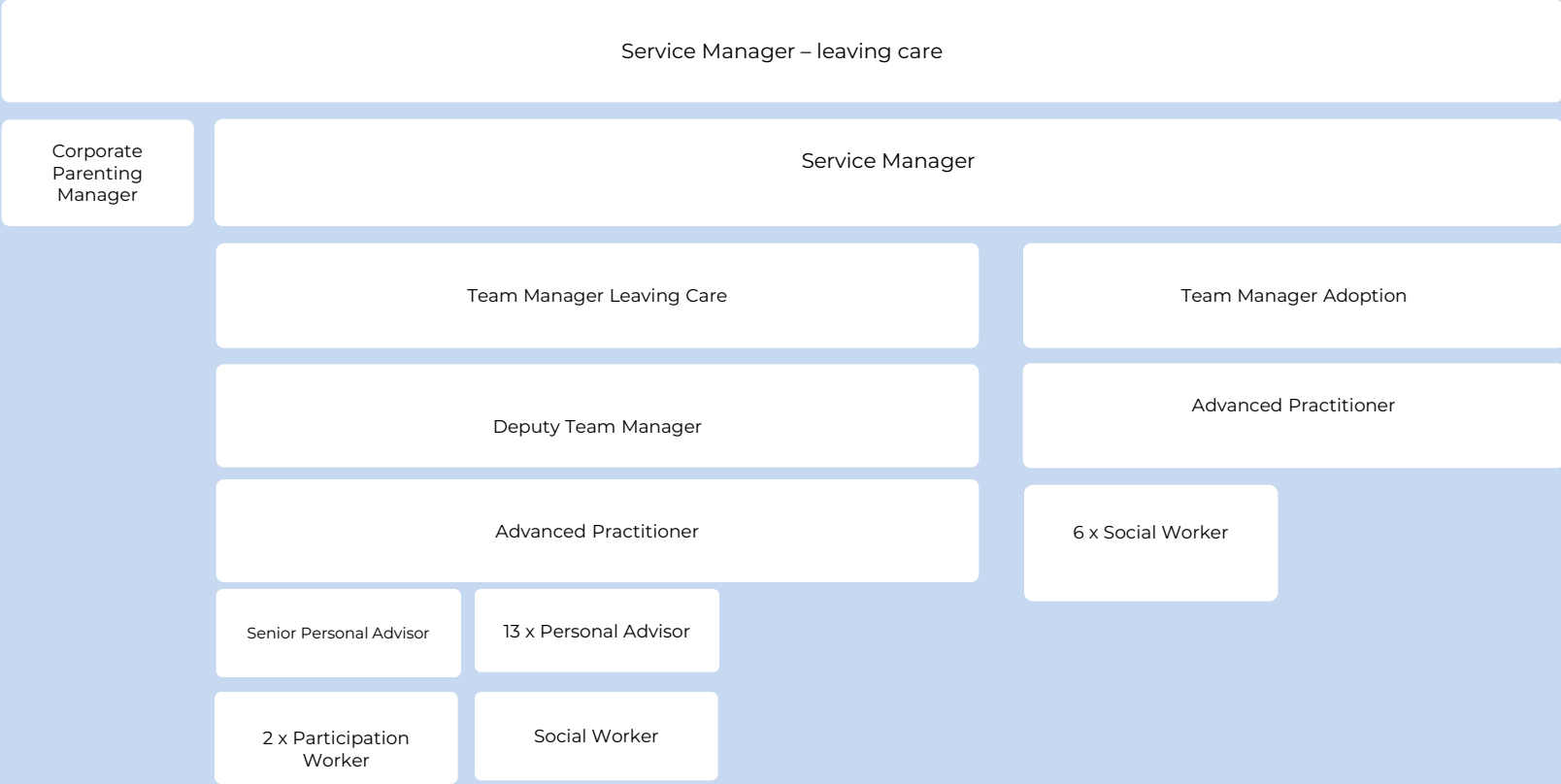
Team Manager CWD

Advanced Practitioner

7 x Social Worker

CYPF Worker







Service Lead

Service Manager

Team Manager A CFPH

Team Manager B CFPH

Team Manager C CFPH

Team Manager D CFPH

Deputy Team Manager

Deputy Team Manager

Deputy Team Manager

Deputy Team Manager

Senior Social Worker

Senior Social Worker

Senior Social Worker

Social Worker
X 3 FTE

Social Worker

Social Worker

Social Worker

Children's Advice & Referral
Officer x 1.5 FTE

Education Leader

Children's Advice & Referral
Officer x 1.8 FTE

Children's Advice & Referral
Officer x 2 FTE

Children's Advice & Referral
Officer x 2.8FTE

Service Lead

Service Manager

Business Support
Manager

Business Support
Officer 5 FTE

Keeping Families Together

Structure Chart 2024



Service Lead

Service Manager

Keeping Families Together Team Manager – Family Practice Manager

Senior Family Group Conference & Mediation Coordinator

Family Group Conference & Mediation Coordinator
(3.6 FTE)

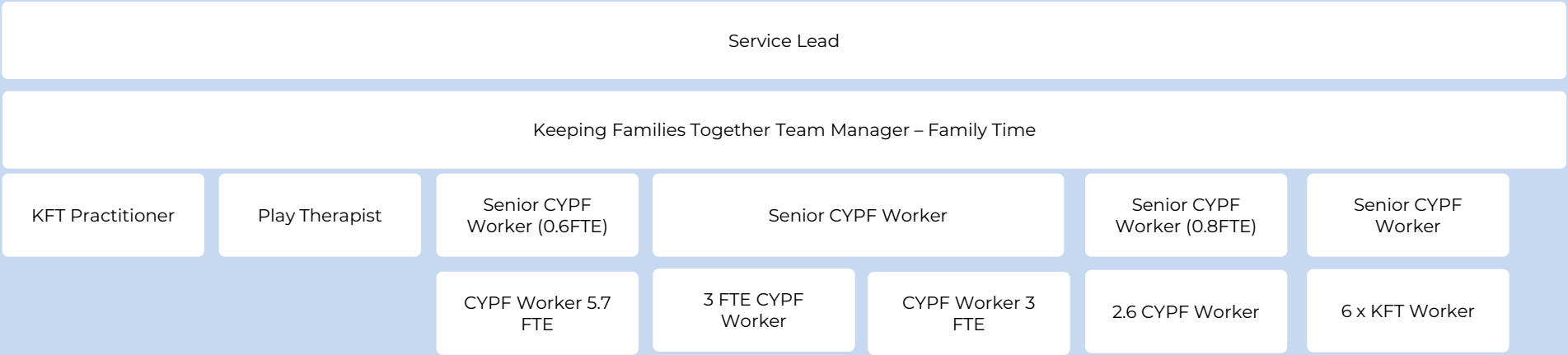
Keeping Families Together Team Manager – Direct work

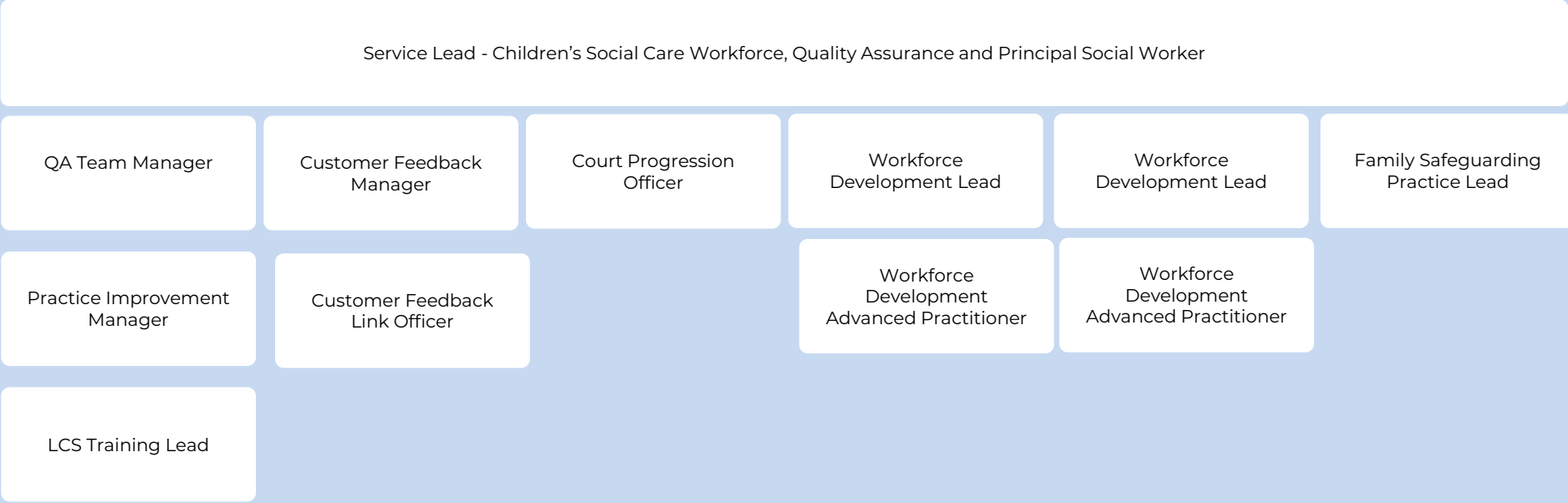
Senior KFTP

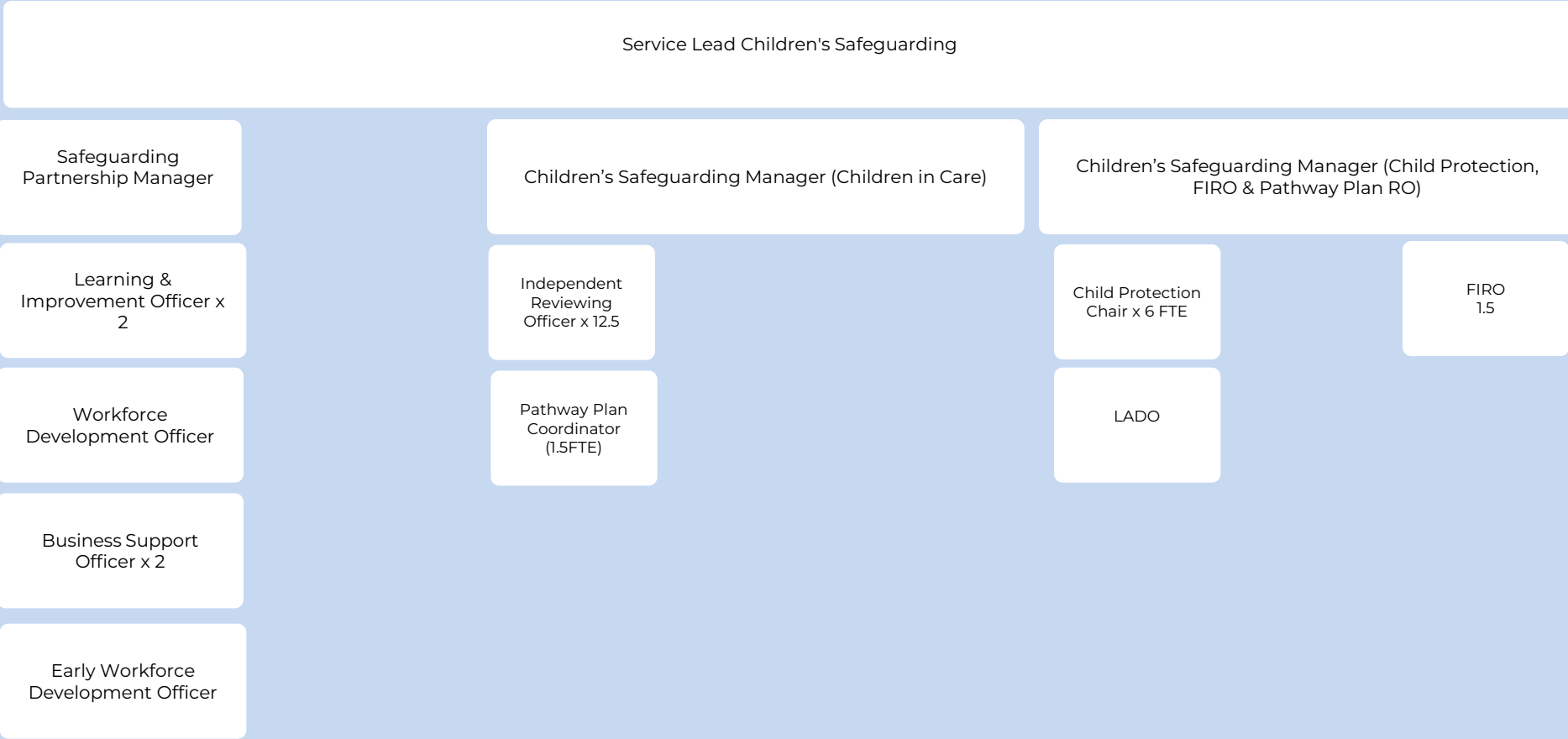
(4.5 FTE) KFTP

Senior KFTP

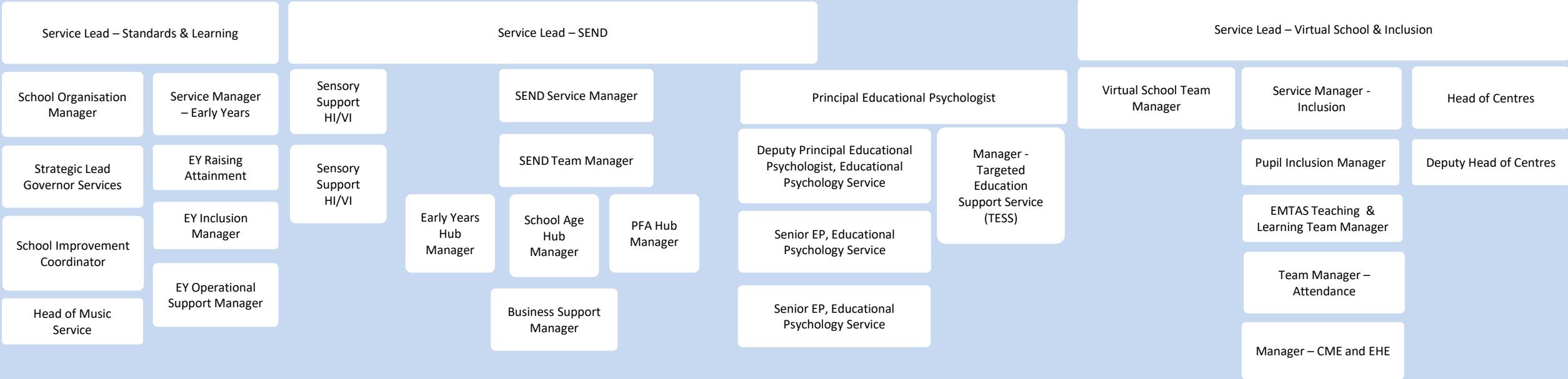
KFTP 8.3 FTE

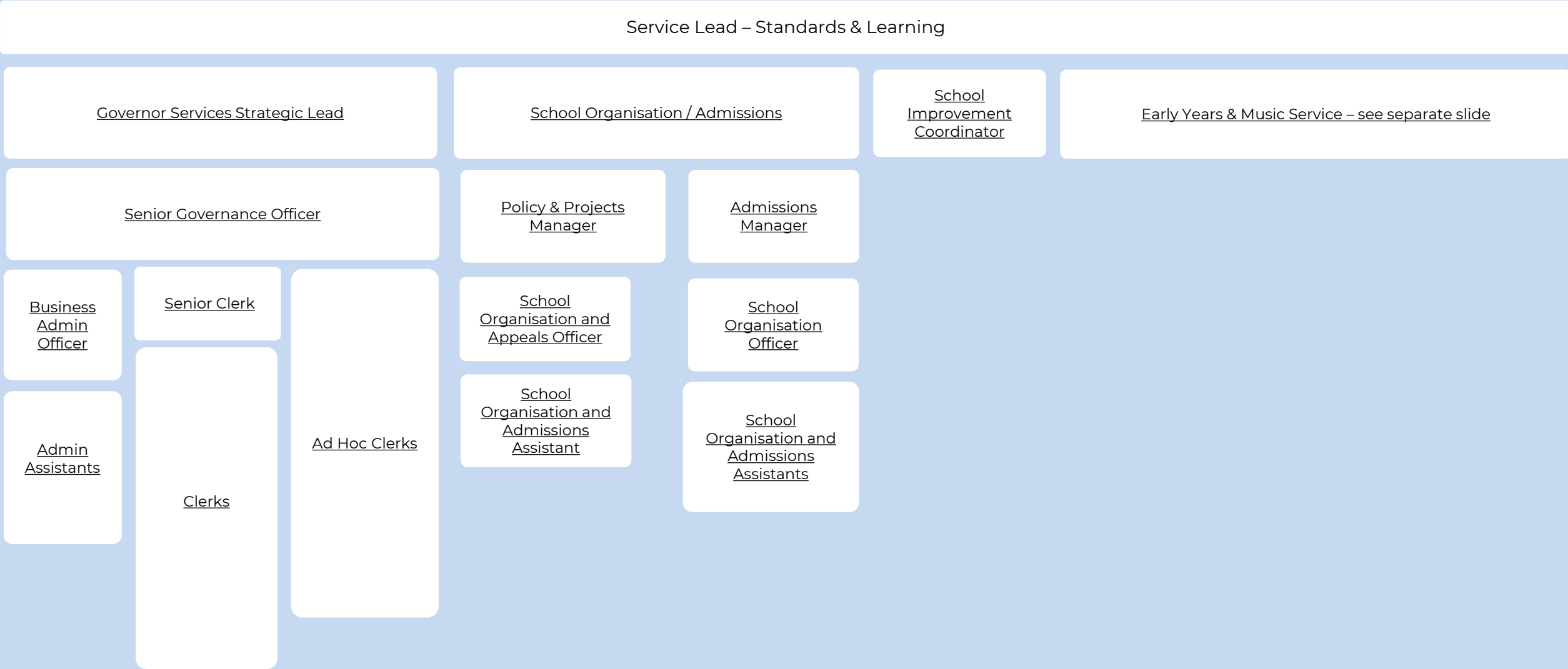






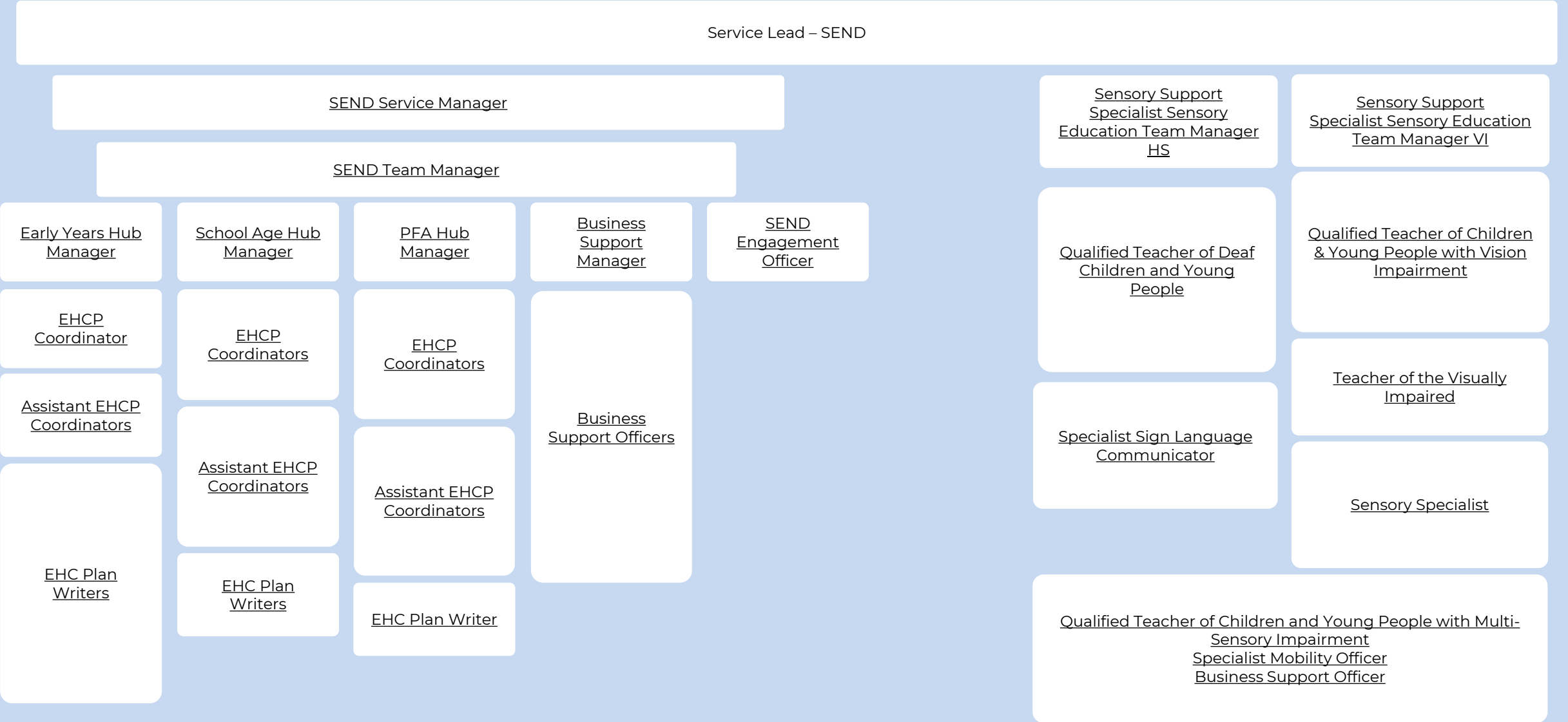
Catherine Pealing
Assistant Director - Education





SEND

Structure Chart 2025



Service Lead – Virtual School & Inclusion

Virtual School Team Manager

Service Manager – Inclusion
Education Safeguarding Lead (full time full year)
See separate slide for Inclusion Service

Head of Centres
See separate slide for Engagement Centres

Virtual School
Inclusion Manager

PEP QA Teacher
(Secondary)

PEP QA Teacher
(Primary)

Virtual School Post
16 & Transition
Manager

Education Engagement
Officers

Business Support

Service Manager – Early Years

EY Raising Attainment

EY Inclusion Manager

EY Operational Support Manager

Music Service

Quality Improvement & Safeguarding Lead

Area SENCO's

LEYEP Development Officer

Assistant Head of Music Service (Instrumental 1)

Early Years Lead Officer

Senior Targeted Support Worker

Information, Data & Sufficiency Officer

Assistant Head of Music Service (Vocal)

Assistant Head of Music Service (Early Years)

Early Years Lead Officer

Targeted Support Worker

Family Information Administrator

Assistant Head of Music Service (Curriculum)

Business Manager

Admin Officer Finance

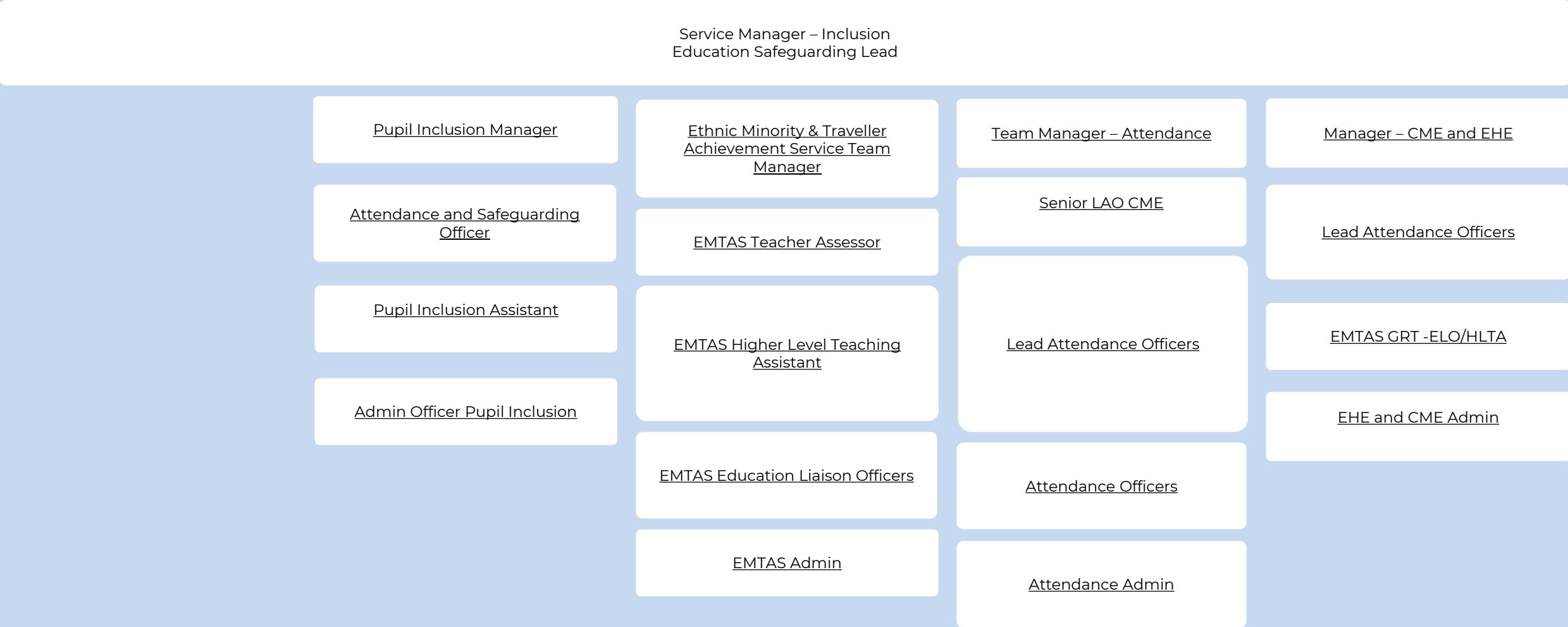
Admin Officer Schools' Liaison

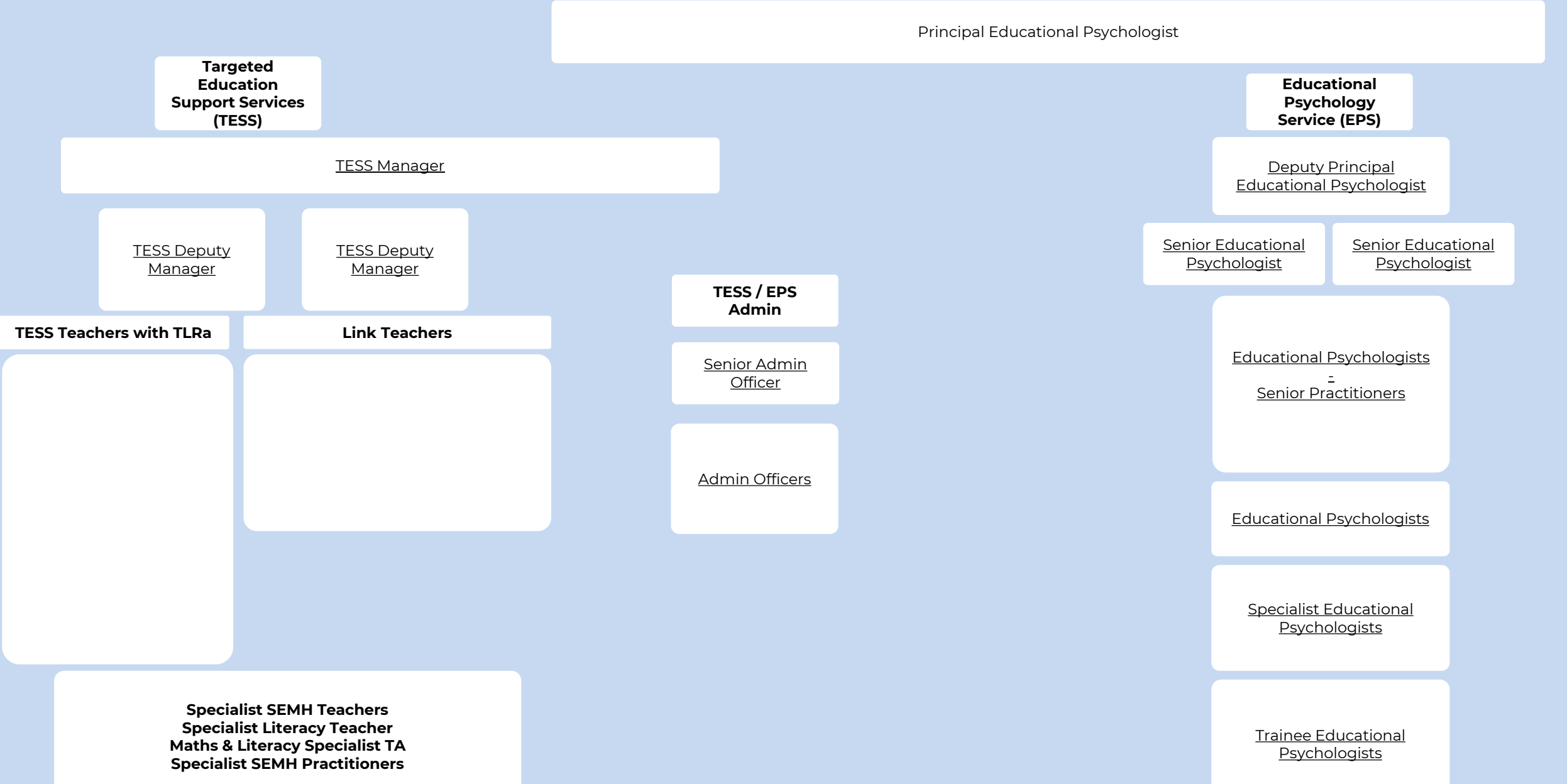
Admin Officer Schools' Liaison – 18.5 hours

Admin Assistant Hire & Music Centre

Receptionist/Clerical Assistant

Support Assistant





Head of Centres

Deputy Head of Centre

Senior HLTA's

Teaching Assistants

Admin / Finance



Wigan Council

