



Request

We wish to understand the history and rationale behind the extreme new parking restrictions recently implemented on Platt Fold Road Leigh. Having lived on the road for thirtyish years, we understand historically there have been occasional traffic obstructions and resident complaints (about legal parking in front of their property) but request the following information:

1. How many obstructions were actually recorded and especially after the extended parking created at the nearby Infirmary during the consultation period
2. Details of any and all feedback received and of discussions and meetings
3. Any monitoring of which people were parking and the day and times of problematic parking
4. Any meetings or consultation in person or actual visits/ monitoring by yourselves - particularly in the evenings and weekend –
5. Any consideration /logic for yellow lines on BOTH sides of the road
6. The reason for extending the restriction outside working hours and weekend.
7. Why the restrictions were not continued to the junction with The Avenue
8. Why a lower cost/ partial implementation was not trialed first = in active hours or one side of roadway
9. Any information gathered already on resulting issues in the surrounding streets caused by these restrictions - certainly there are on social media.

Response

1. Number of obstructions not recorded.
2. Enclosed Delegated Approval Report provides details of discussions on proposals.
3. Not recorded.
4. Information not available.
5. Parking restrictions are installed to account for the times the bus services operate.
6. The parking restrictions are installed in line with the operational times of the 597/594): timetable available on [Live departures | Bee Network | Powered by TfGM](#)
7. Platt Fold Road is where the obstructive parking was reported. Further parking restrictions may be required near to the Avenue. Additional statutory process would be required to do this.
8. The installation on Platt Fold Road has been made by Experimental Order. Changes can be made to this based on feedback and performance.
9. Not available



Wigan[♥]
Council

To:	Assistant Director: Infrastructure and Regulatory Services	From:	Traffic Management and Parking Services Manager
Our Ref:	PFR/ROW/L/01/SD	Date:	09 September 2024
		Ext:	89302

Proposed Experimental Restriction of Waiting, Prohibition of Waiting & No Loading/Unloading Orders

Platt Fold Road, Leigh.

I approve the proposals listed in the schedule / outlined in this report.

..... Date: 9/9/24
Assistant Director: Infrastructure and Regulatory Services

I do not approve the proposals for the following reasons:

.....
.....
.....
.....

Internal Distribution

Councillor Distribution

Title: Platt Fold Road, Leigh, Proposed Experimental Restriction of Waiting, Prohibition of Waiting & No Loading / Unloading Orders

Ward: Atherton South & Lilford

Contact Officer: Tel no.: 89360

1.0 Purpose of Report:

1.1 To consider and seek approval to introduce a Restriction of Waiting Order, Prohibition of Waiting & No Loading / Unloading on Platt Fold Road in Leigh.

2.0 Background:

2.1 Residents, Councillors and Transport for Greater Manchester have reported parking on Platt Fold Road that is obstructing buses in the vicinity of Leigh Infirmary.

2.2. Platt Fold Road is a residential road that is close to Leigh Infirmary. This is just outside the resident's permit parking scheme on The Avenue that is in operation Monday to Saturday, 9am to 5pm. This means Platt Fold Road can attract public and staff parking when the hospital car parks are full.

2.3. The parking which has been observed and reported numerous times can take place on both sides of the road. When this is the case, buses that use Platt Fold Road can not pass and there have been many occasions that has resulted in the bus terminating the route and causing passengers to disembark.

2.4. Network Management do not recommend parking restrictions in residential areas however given the proximity to the hospital and the issues affecting busses, parking restrictions can be justified.

2.5. The proposal are to be proposed on an Experimental basis as the proposals need to be implemented immediately so buses can operate. The proposals will be monitored and the residents have already been sent a letter of consultation on the proposals.

3.0 Proposals:

3.1 The proposals are to be progressed on an experimental basis for 18 months. During the first 6 months, representations for and against can be made and is a period that the proposals can be amended if required.

3.2 The Restriction of Waiting (Single Yellow Line) is to be advertised Mon – Sat 8am to 10pm with a ban on loading and unloading for the same times. This is so disabled badge holders cannot park here and cause obstruction which the proposals seek to prevent.

3.3 A Prohibition of Waiting Order will also be promoted at the junction of Red Waters with a loading/unloading restriction at all times to prevent parking.

4.0 Justification

4.1 The proposed parking restrictions will prevent parking on Platt Fold Road and ensure that buses can freely pass and repass to the hospital.

5.0 Recommendation:

5.1 It is recommended that the proposals contained in this report be approved.

Report seen by Date 9/9/24

- Traffic Management and Parking Services Manager

Appendix A

Schedule 1 – Proposed Restriction of Waiting (Mon – Sat 8am to 10pm)

ROAD	SIDE	FROM	TO	PERIOD OF OPERATION
Platt Fold Road, Leigh	West	A point 17 metres south of its junction with Riversmede	10 metres north of Redwaters	On any Monday, Tuesday, Wednesday, Thursday, Friday or Saturday 8.00am-10.00pm
Platt Fold Road, Leigh	East	A point 4 metres south of its junction with Riversmede	For a distance of 160 metres southbound	On any Monday, Tuesday, Wednesday, Thursday, Friday or Saturday 8.00am-10.00pm
Platt Fold Road, Leigh	West	10 metres south of Redwaters	For a distance of 45 metres southbound	On any Monday, Tuesday, Wednesday, Thursday, Friday or Saturday 8.00am-10.00pm

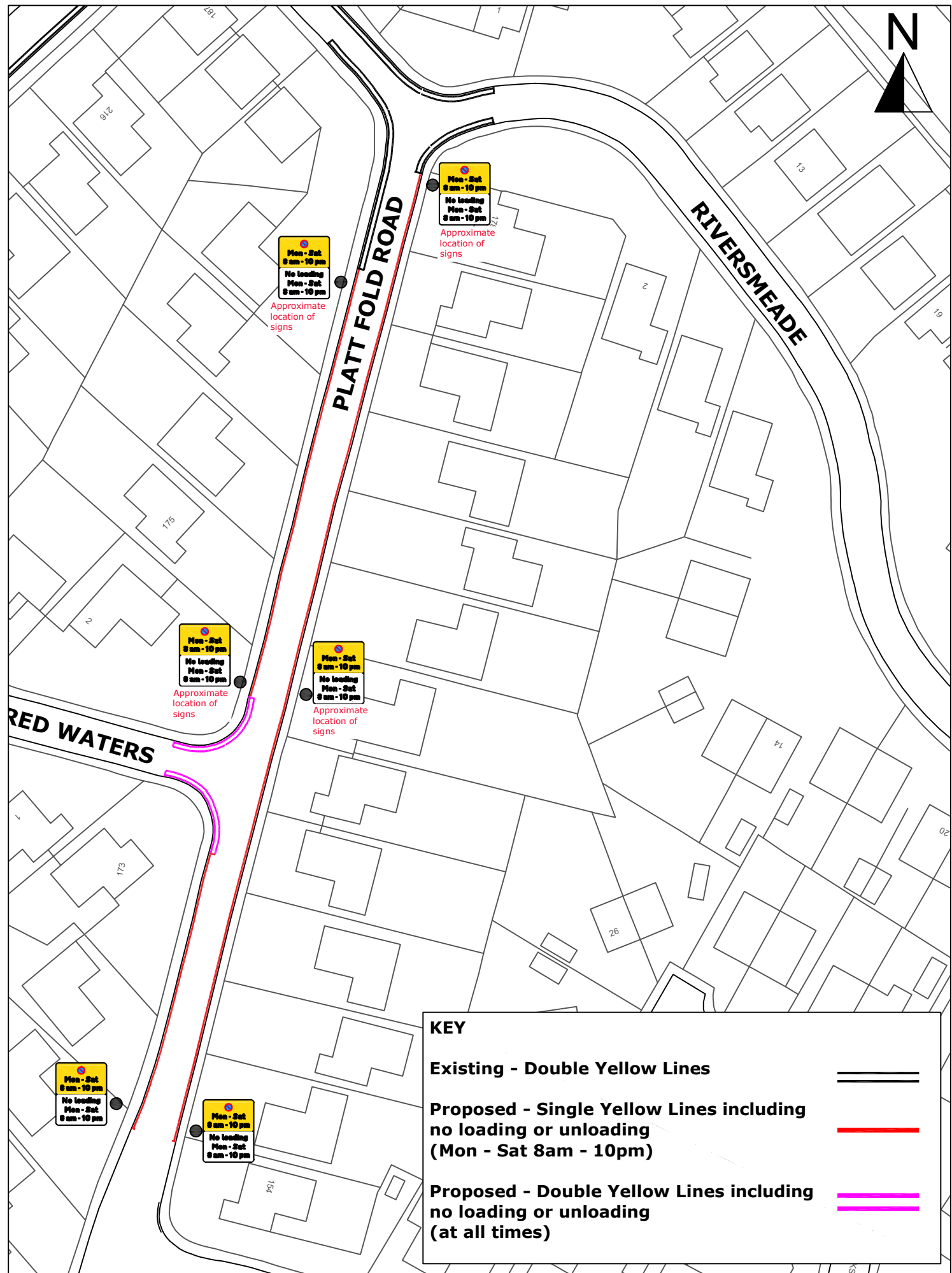
Schedule 2 – Proposed Prohibition of Loading/Unloading

ROAD	SIDE	FROM	TO	PERIOD OF OPERATION
Platt Fold Road, Leigh	West	A point 17 metres south of its junction with Riversmede	10 metres north of Redwaters	On any Monday, Tuesday, Wednesday, Thursday, Friday or Saturday 8.00am-10.00pm
Platt Fold Road, Leigh	East	A point 4 metres south of its junction with Riversmede	For a distance of 160 metres southbound	On any Monday, Tuesday, Wednesday, Thursday, Friday or Saturday 8.00am-10.00pm
Platt Fold Road, Leigh	West	10 metres south of Redwaters	For a distance of 45 metres southbound	On any Monday, Tuesday, Wednesday, Thursday, Friday or Saturday 8.00am-10.00pm
Redwaters, Leigh	Both	its junction with Platt Fold Road	10 metres west of its junction with Platt Fold Road	At all times
Platt Fold Road, Leigh	West	10 metres north of its junction with Redwater	10 metres south of its junction with Redwater	At all times

Schedule 3 – Proposed Prohibition of Waiting (at all times)

ROAD	SIDE	FROM	TO
Redwater, Leigh	Both	its junction with Platt Fold Road	10 metres west of its junction with Platt Fold Road
Platt Fold Road, Leigh	West	10 metres west of its junction with Redwater	For a distance of 10 metres eastward from its junction with Redwater

Appendix B – Scheme Plans



KEY

- Existing - Double Yellow Lines =====
- Proposed - Single Yellow Lines including no loading or unloading (Mon - Sat 8 am - 10 pm) —————
- Proposed - Double Yellow Lines including no loading or unloading (at all times) =====