



## Standish Infrastructure Assessment Engagement, 15 March 2021

Our People

Our Place

Our Future

# Agenda

Item No	Standish Engagement Event		
1.	Welcome & Introductions	Chair Marie Bintley Assistant Director, Growth and Housing	10 mins
2.	Standish Infrastructure Assessment Presentation: <ul style="list-style-type: none"><li>• Context</li><li>• Highways infrastructure</li><li>• Parking</li><li>• Cycling and Walking</li><li>• Open space and play</li></ul>		25 mins
3.	<u>Questions and Answers Session</u>		40 mins
4.	<u>Next Steps</u>		10 mins
5.	<u>Closing remarks</u>		5 mins
6.	<u>Event closed</u>		



## Video Conferencing Etiquette

- Please put yourself on mute if you are not contributing and un-mute when you want to contribute.
- Please put your hand up if want to speak – the chair will come to you in order of when hands have been put up. We will do our best to ensure everyone has the opportunity to ask questions and contribute to the meeting.
- Please adhere to the chair’s guidance and the order of the meeting agenda.
- Please be kind and respect all others on the call.

Our People

Our Place

Our Future

# Section 106 funding

- The Standish Infrastructure Assessment was prepared in late 2013.
- It requires developers to pay between **£4,975** and **£4,994** per new home.
- This must be spent on infrastructure improvements to mitigate the adverse impact of that development.
- A total of **1,661** homes have been approved to date, with developers committed to contributing **£6.6m**, of which:
  - **£2.3m** is for education and community provision
  - **£1.2m** is agreed for other projects, incl. public transport and open space
  - **£3.1m** remains for unspecified infrastructure

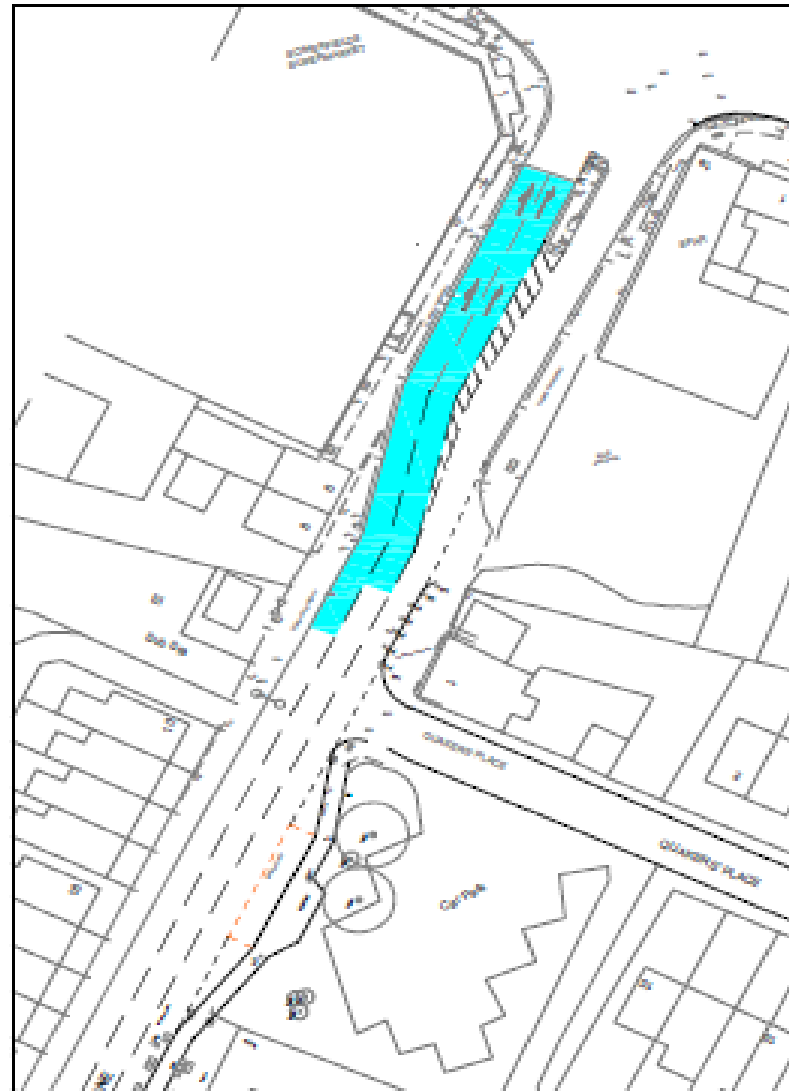
# Highways Infrastructure

# School Lane carriageway widening (am peak)

Do Nothing AM Modelled Single Lane Queues



Do Something AM Modelled Two Lane Queues



# School Lane carriageway widening (pm peak)

The Deal  
2030

Our People

Our Place

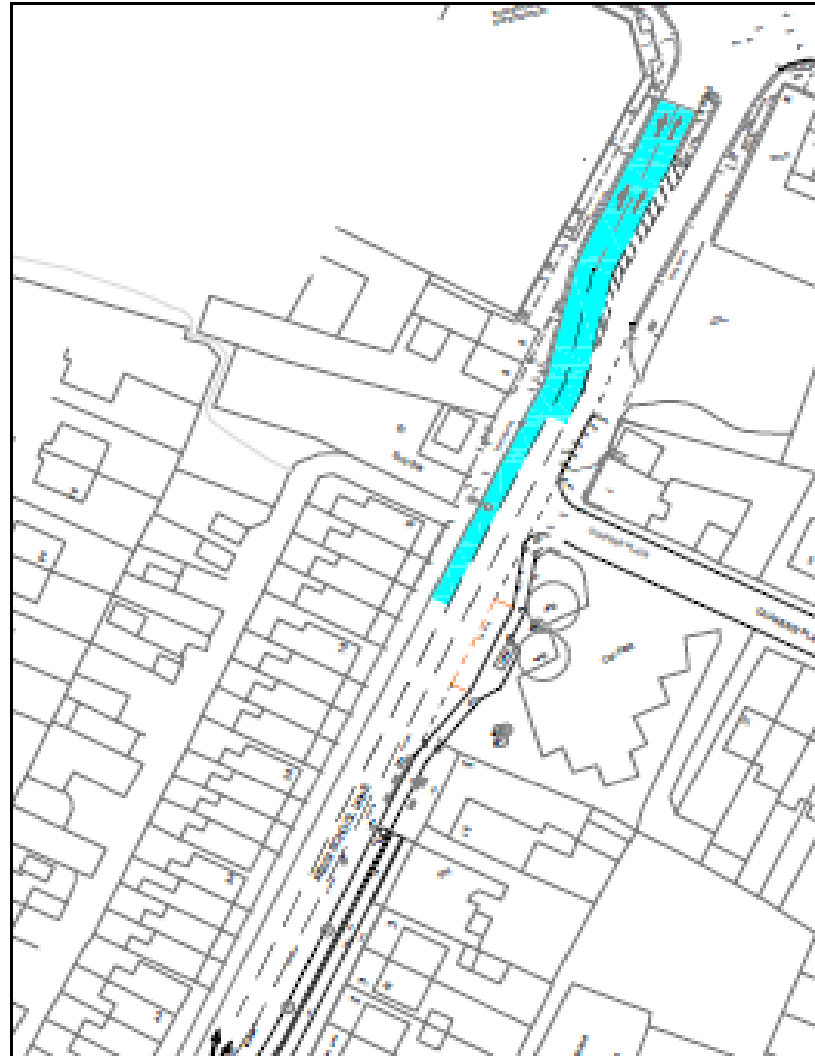
Our Future

Wigan Council

Do Nothing PM Modelled Single Lane Queues



Do Something PM Modelled Two Lane Queues



Estimated  
scheme  
cost: £1.6m

# Village centre proposals, with Market Street Puffin Crossing

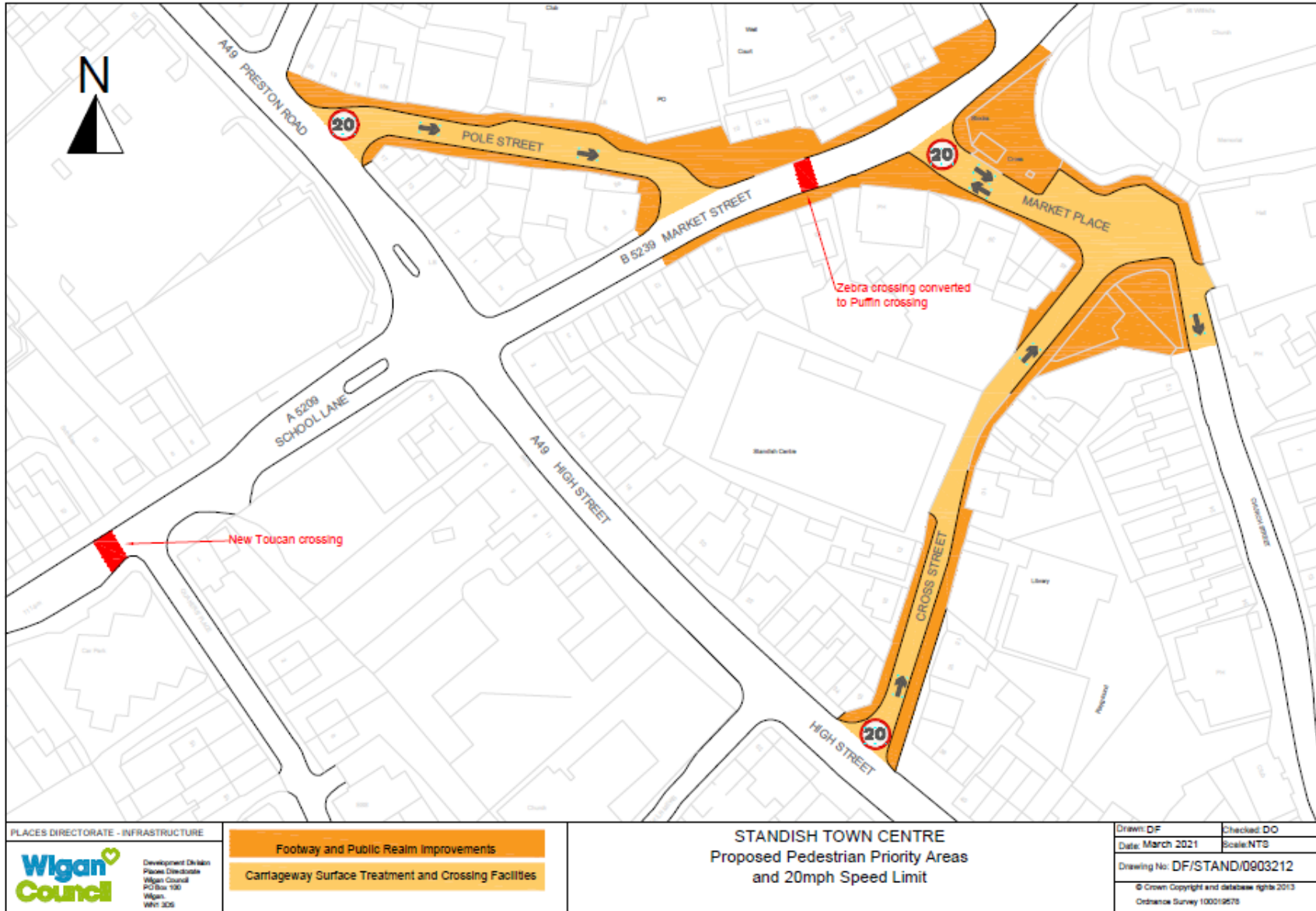
The Deal  
2030

Our People

Our Place

Our Future

Wigan Council

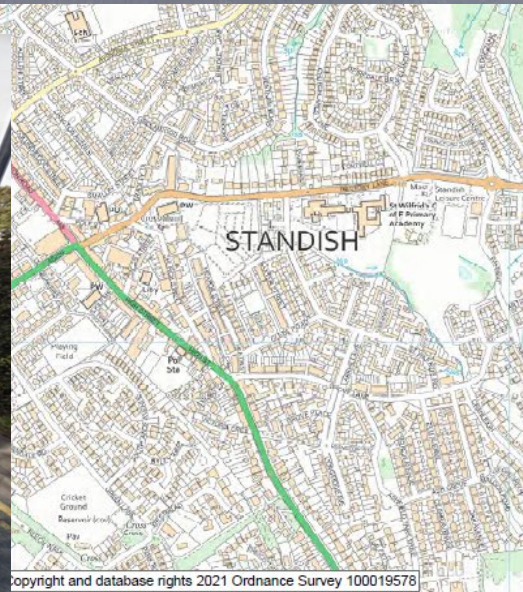
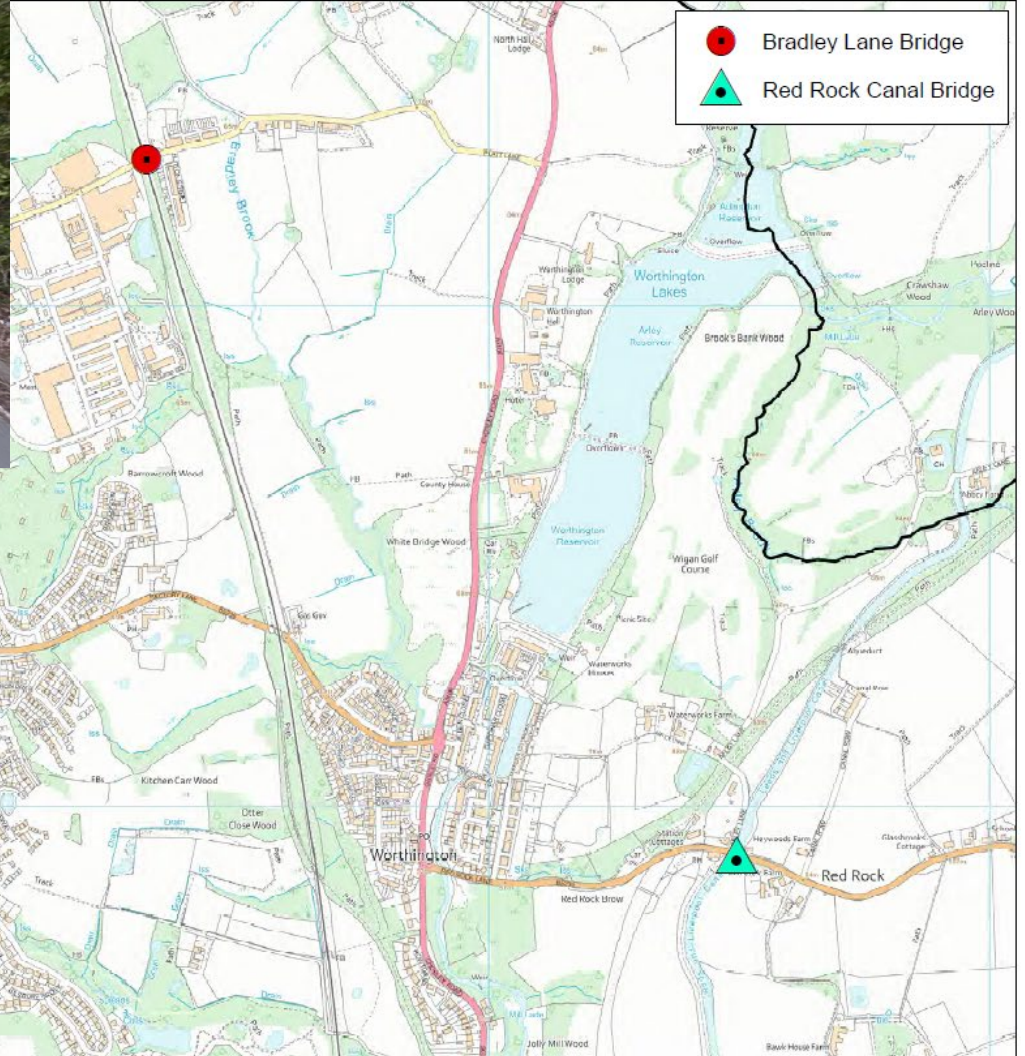


Estimated  
scheme  
cost:  
£1.6m



# Bradley Lane and Red Rock Lane

Bradley Lane,  
approx  
£100,000;  
Red Rock  
approx  
£70,000





## Car Parking

Our People

Our Place

Our Future

# Car Parking - Pole Street

The Deal  
2030

Our People

Our Place

Our Future

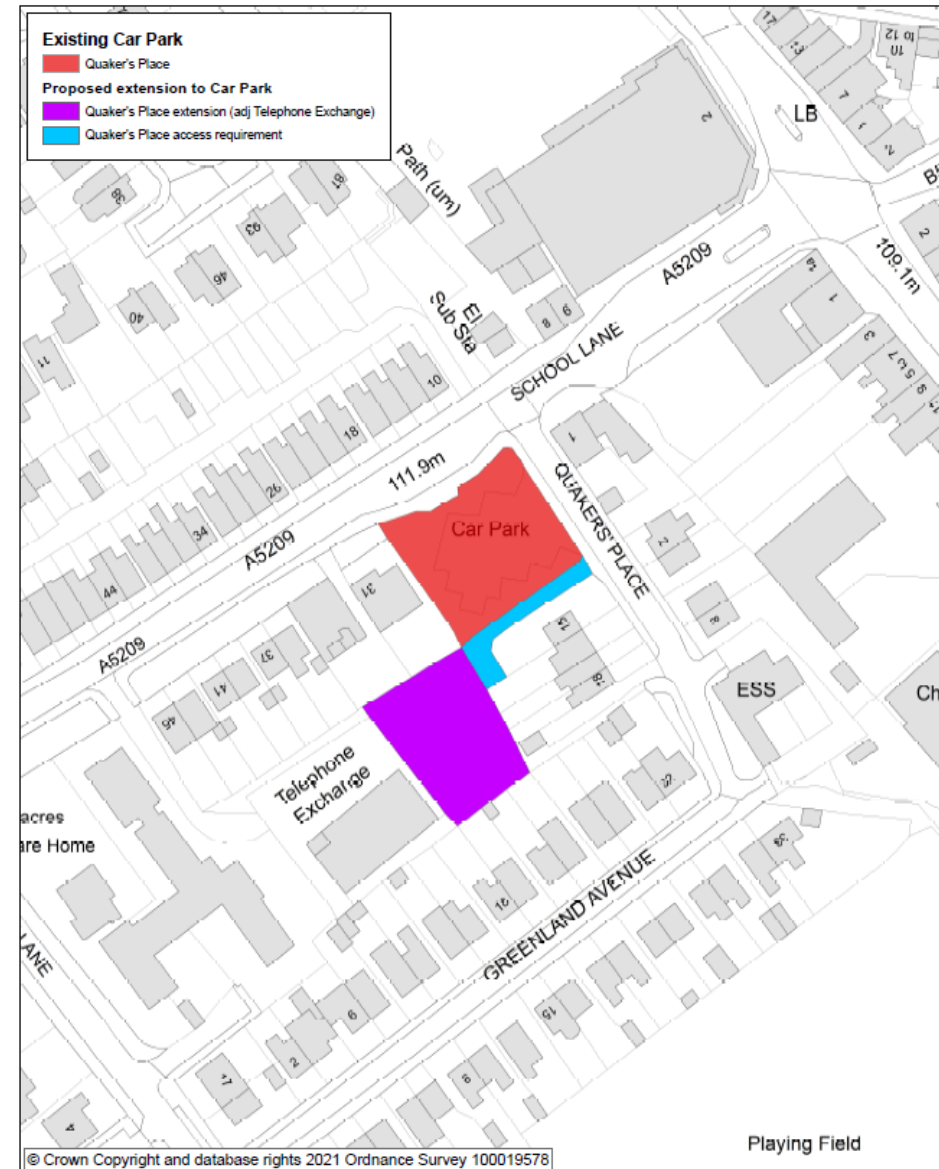
Wigan Council



- Removal of embankment at existing car park, shown yellow
- Low cost option (approx £20,000) to marginally increase car park capacity - 2 additional spaces

# Car Parking – Quakers Place

- Resurfacing and demarcation of existing car park (shown in red)
- Land acquisition and engineering works, estimated cost £400,000
- Increase capacity by approximately 40 spaces



# Walking and Cycling

# Walking and cycling

The Deal  
2030

Our People

Our Place

Our Future

Wigan Council

- Creating safer and more appealing conditions for walking and cycling, as genuine alternatives to car travel for more people
- Reducing the number of cars on the road, queue lengths and travel times

# Standish Mineral Line Extension

The Deal  
2030

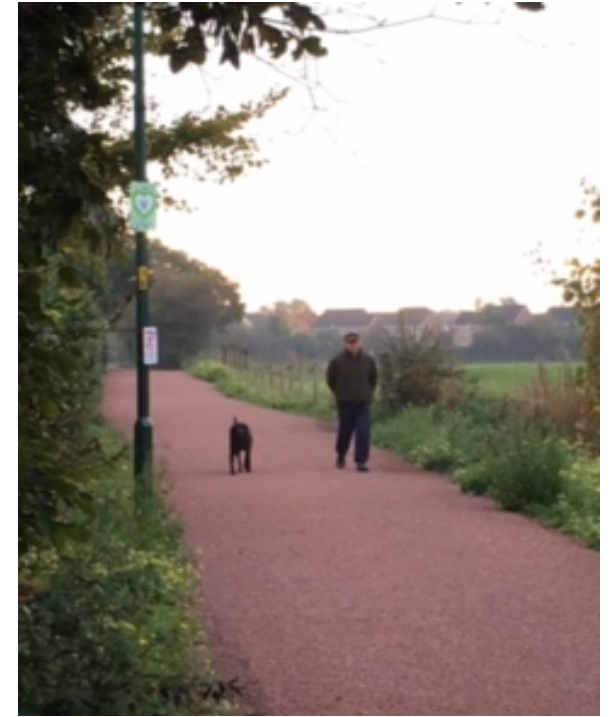
Our People

Our Place

Our Future

Wigan Council

- Extension of the existing Standish Mineral Line, building on its success
- Providing enhanced north-south connectivity between Robin Hill and Almond Brook, and to Shevington Moor
- Cost £50,000 s106, with additional £700,000 from GM Mayor's Challenge Fund (£750,000 total)



# Standish–Wigan cycling route, west

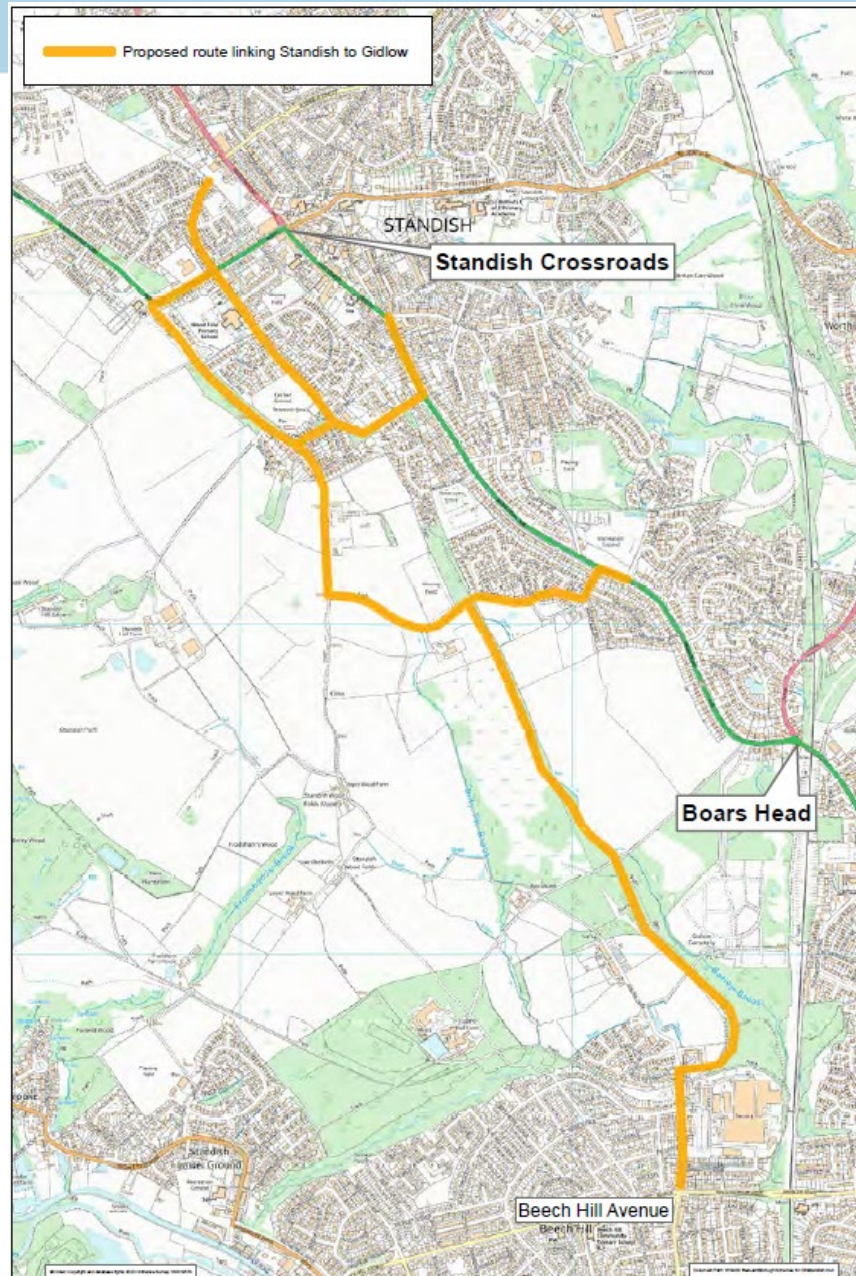
The Deal  
2030

Our People

Our Place

Our Future

Wigan Council



- Standish Mineral Line to Gidlow, Wigan, as an alternative route to the A49
- Controlled pedestrian/cycle crossing facilities on School Lane and connections to residential areas
- Surfaced like the Mineral Line
- Lighting where possible
- Cost £1m s106, with additional £2.1m from GM Mayor's Challenge Fund (£3.1m total)



# Standish–Wigan cycling route, east

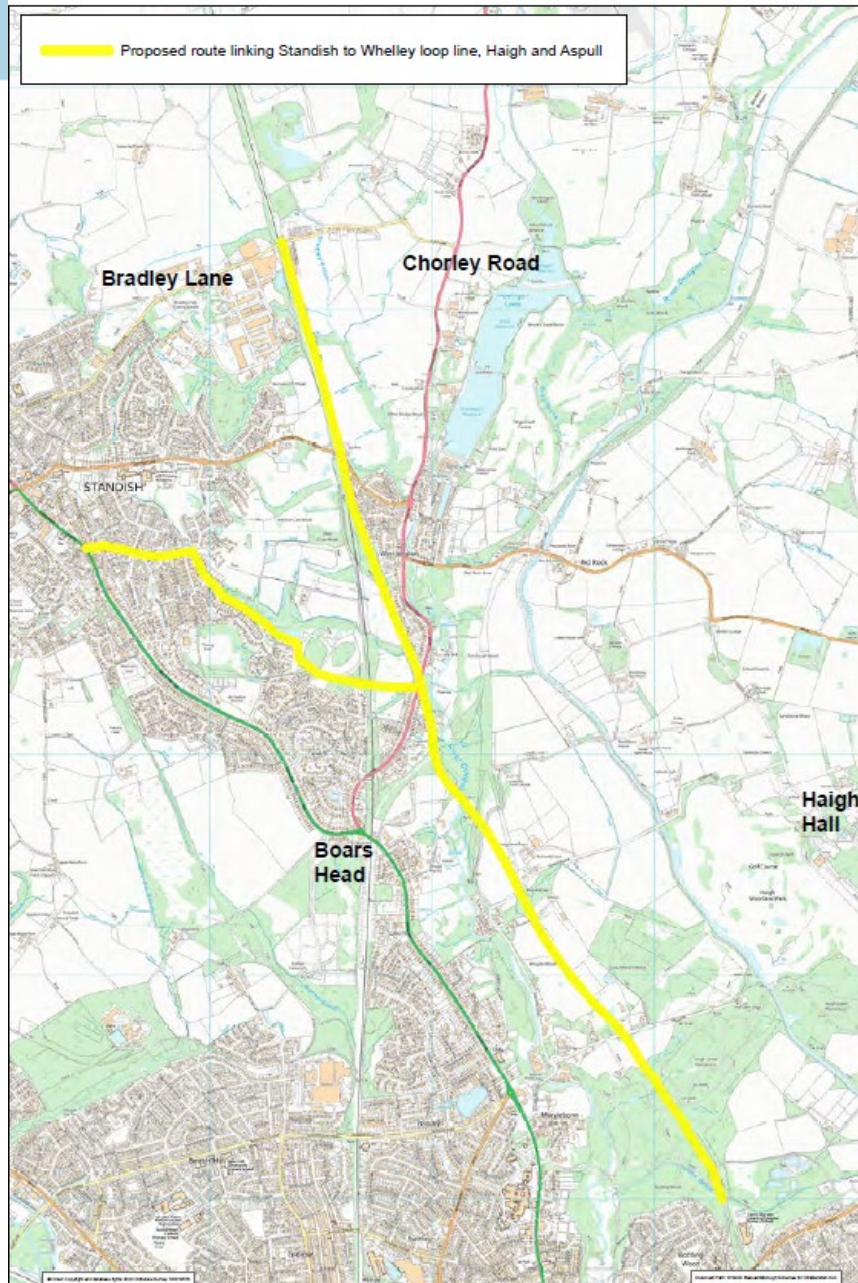
The Deal  
2030

Our People

Our Place

Our Future

Wigan Council



- Bradley Lane, Standish to Whelley Loop Line Cycleway, Ince and Hindley
- Surfaced like the Mineral Line
- Lighting where possible
- Cost £450,000 s106, with additional £2m from Wigan Council and £2.2m GM Mayor's Challenge Fund (£4.65m total)

# Public Open Space and Play

# Ashfield Park

The Deal  
2030

Our People

Our Place

Our Future

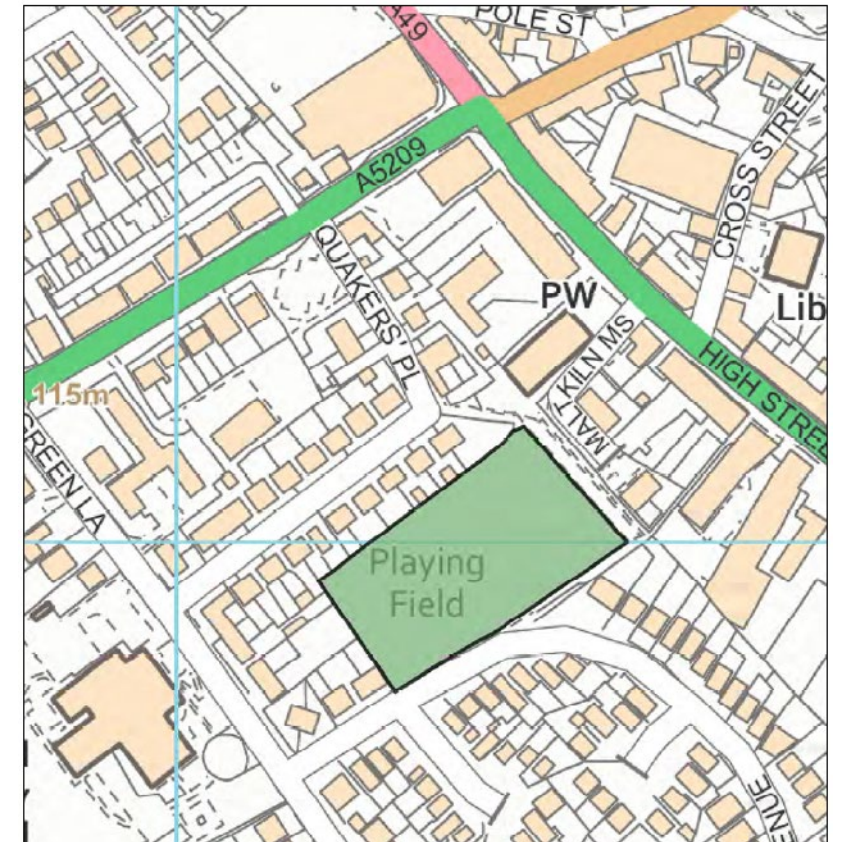
Wigan Council

- **Outdoor gym:** new facility, approx. £20,000 (example - photo)
- **Playing pitches:** drainage improvements are needed, approx. £290,000
- **Junior play area:** replace the sand surface, which gets washed away, with a new soft surface, approx £20,000 (example - photo)
- **Footpath improvements** – within and around the park, approx. £50,000



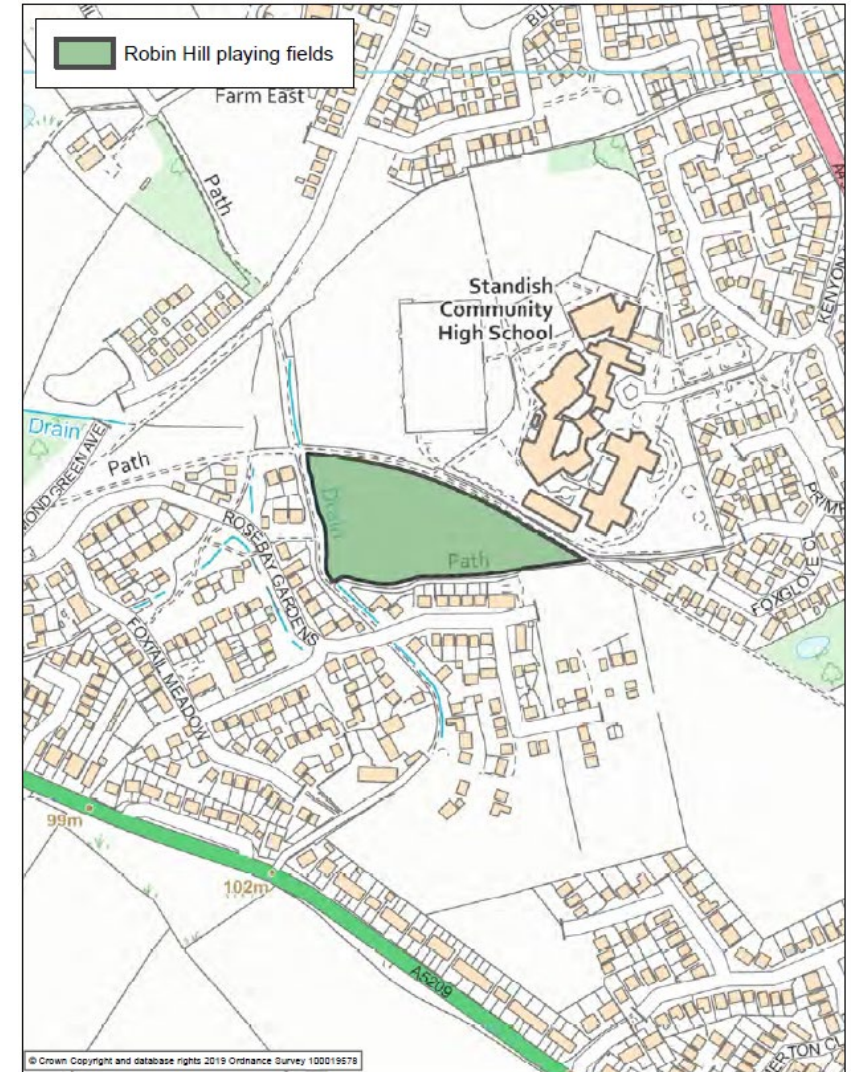
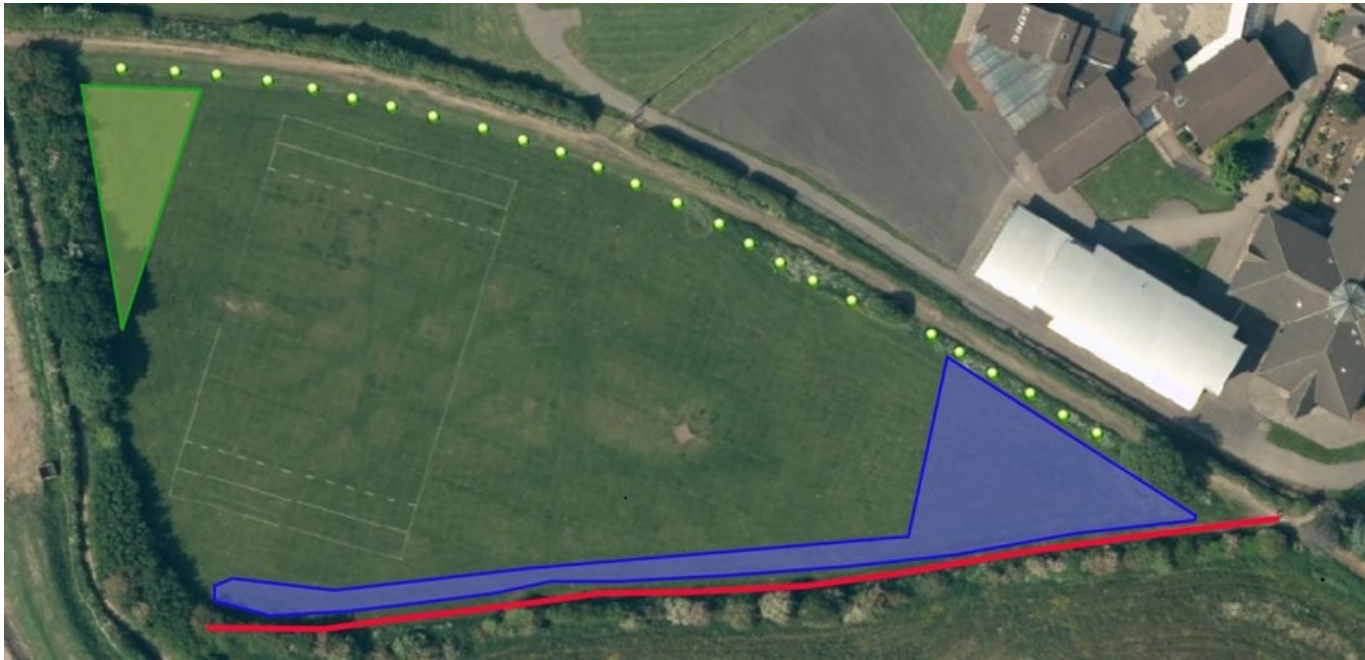
# Southlands Rec

- Need to retain the sports pitch
- Potential for provision of play equipment (approx £50-60,000) and an outdoor gym (£20,000), if space allows



# Robin Hill Field

- Need to retain the sports pitch capacity
- Tree planting and wild flower meadow to improve biodiversity, approx £4,200



# Almond Brook Pond Site

The Deal  
2030

Our People

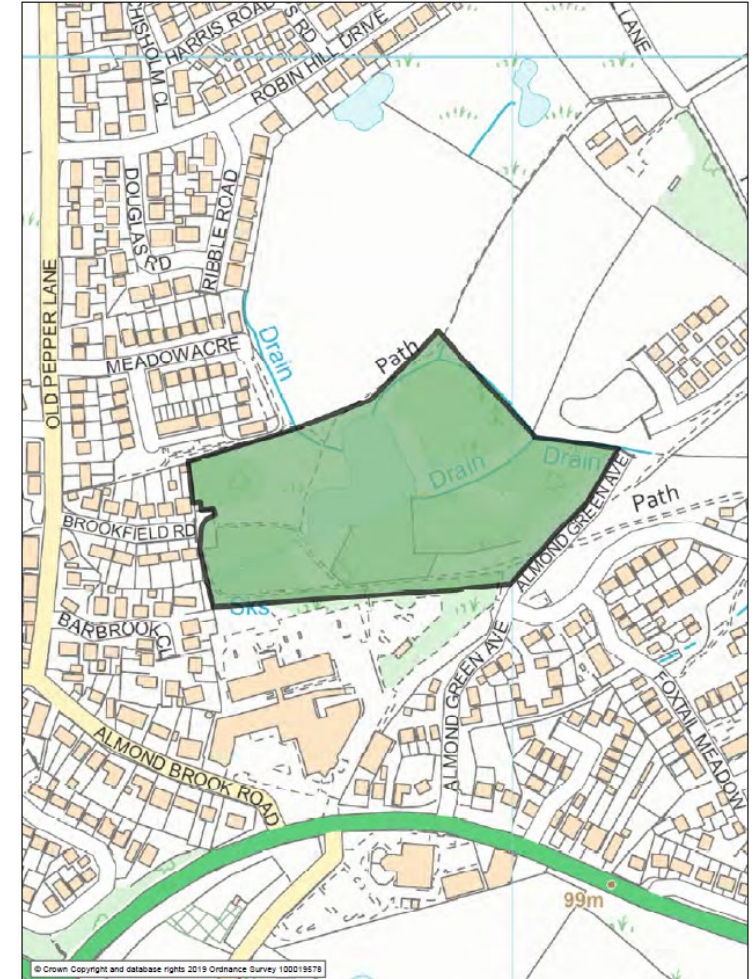
Our Place

Our Future

Wigan  
Council



- Safeguard and enhance the pond, woodland management, woodland walk
- Costs to be determined through further investigations



# Education

# Investment in schools

The Deal  
2030

Our People

Our Place

Our Future

Wigan Council

Due to an increase in pupil numbers, partly arising from the new housing, we:

- Have expanded St Wilfrid's CE Primary at a cost of £550,000, now complete
- Are taking a phased approach to extending Wood Fold Primary, initial stage costing £850,000, completion September 2021
- May extend St Marie's Catholic Primary, if pupil numbers continue to increase





# Next steps

# Next steps

The Deal  
2030

Our People

Our Place

Our Future

Wigan  
Council

- The consultation closes on 21 March (11:59 pm)
- We will collate and consider all the responses
- We will then take the projects through the council's governance processes to determine which projects will be funded
- Choices will need to be made to secure the best mitigation benefits
- Designs and costs will need to be finalised – there will be project specific consultations
- A delivery programme will be confirmed against the expected schedule of remaining receipts
- We want to deliver the projects as soon as possible
- We will keep people updated.

**Thank you for your time  
and attention.**

**Questions and Answers**