

State of the Borough 2017

Population (2015)

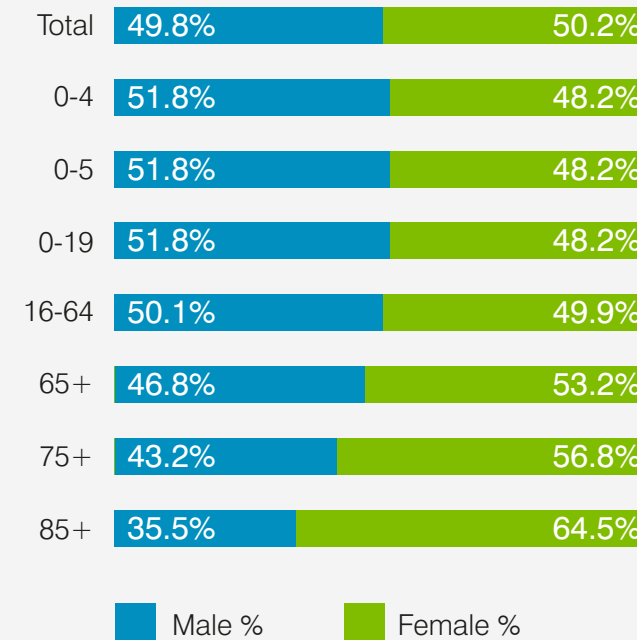
Population of Wigan Borough



Projected population in 2039



Population age range (2015)



Deprivation (2015)

Wigan is ranked 85th out of the 326 Local Authorities for deprivation (where 1 is most deprived)



Households (2015)

Number of households in the Borough

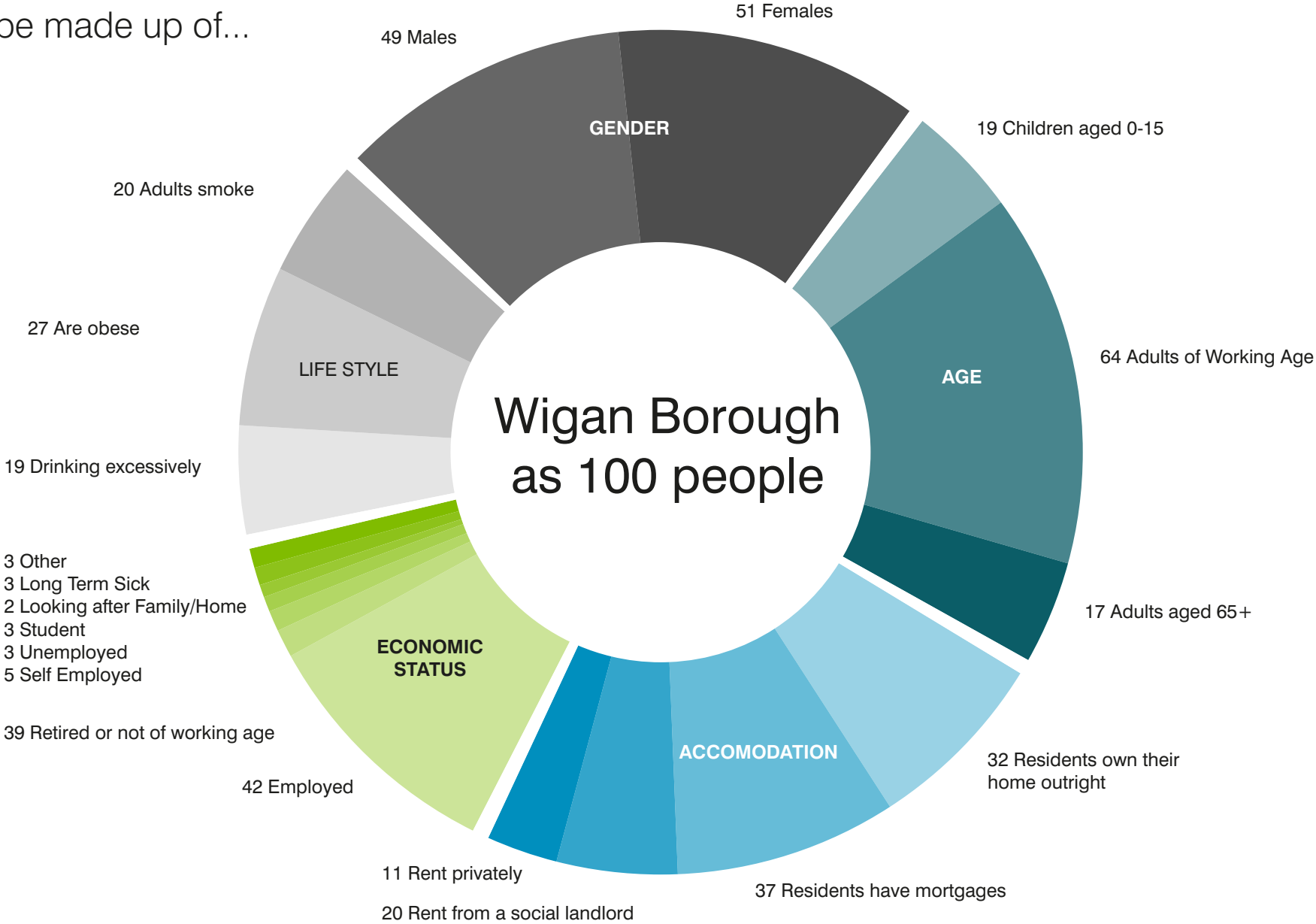


Ethnic Group (2011)

White	97.3%
Mixed/multiple ethnic groups	0.9%
Asian/Asian British	1.1%
Black/African/Caribbean/Black British	0.5%
Other ethnic group	0.2%

If Wigan was a borough of 100 people

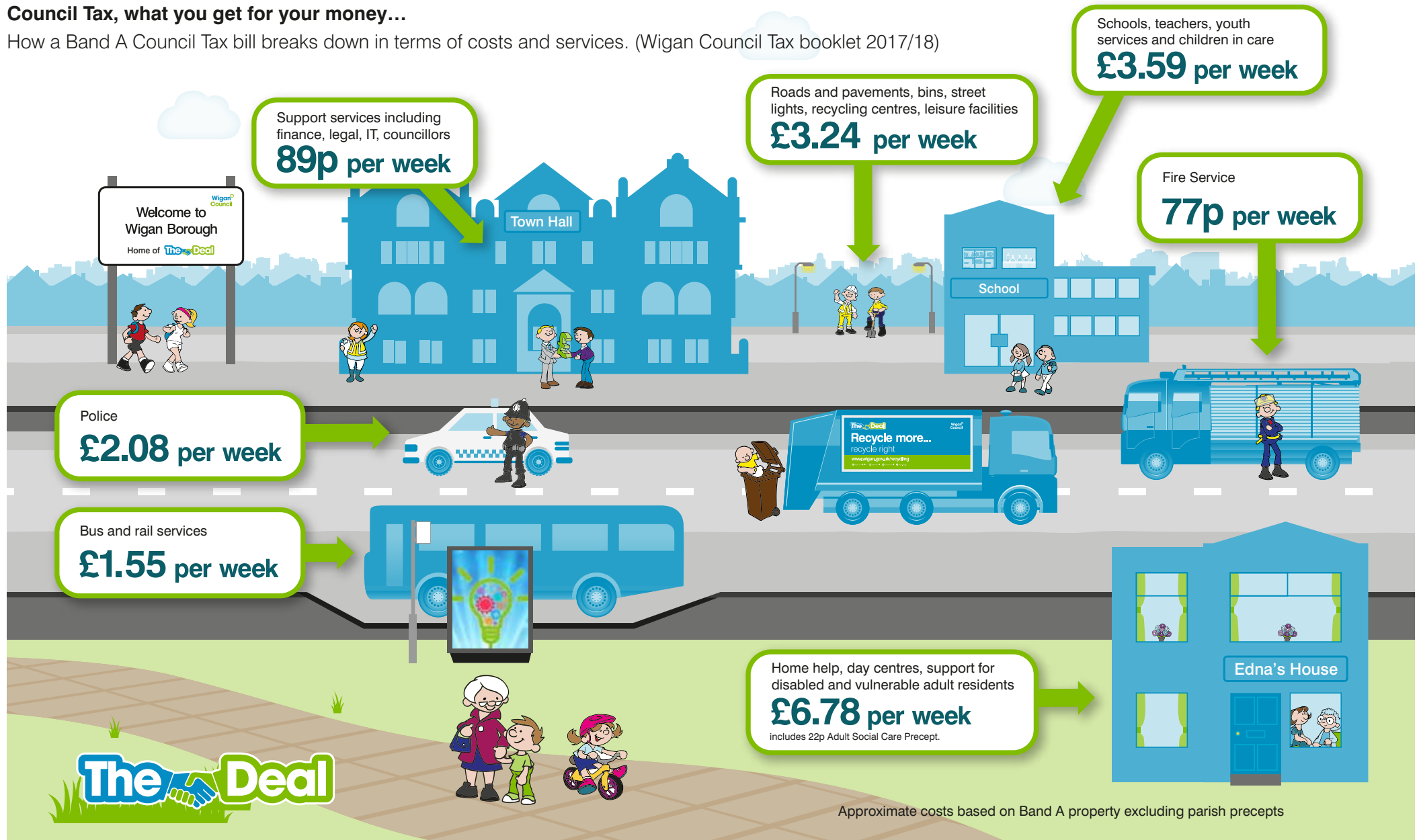
It would be made up of...



Council Tax

Council Tax, what you get for your money...

How a Band A Council Tax bill breaks down in terms of costs and services. (Wigan Council Tax booklet 2017/18)

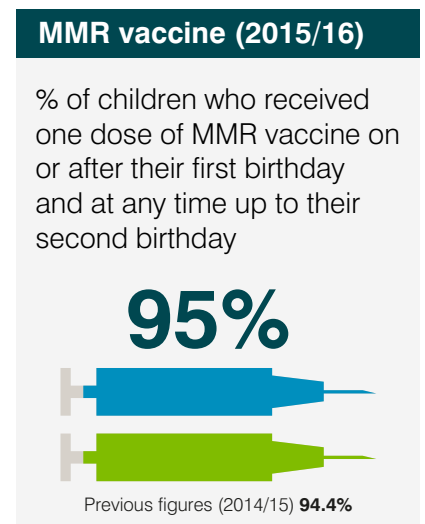
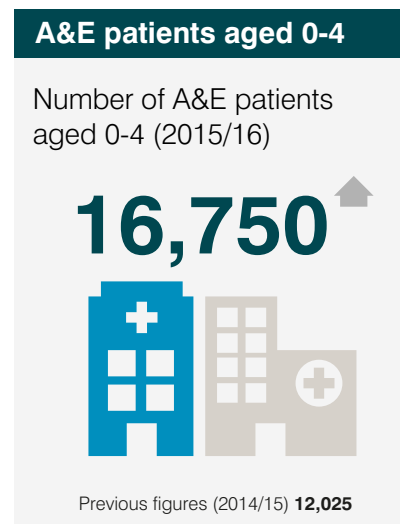
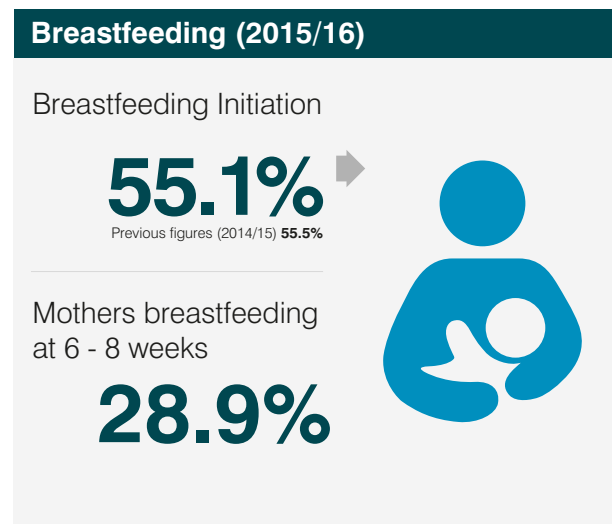
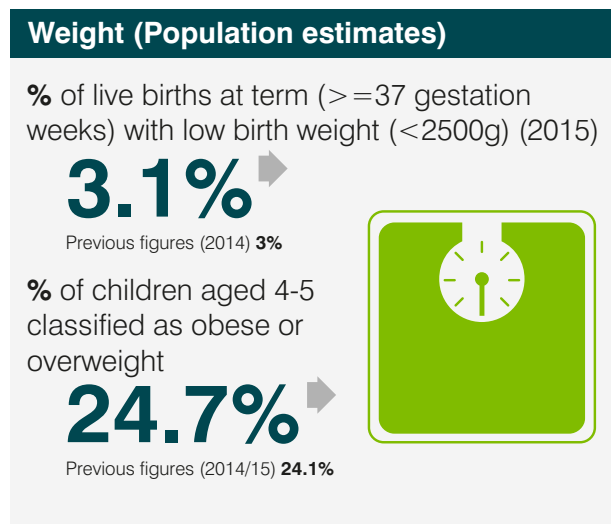
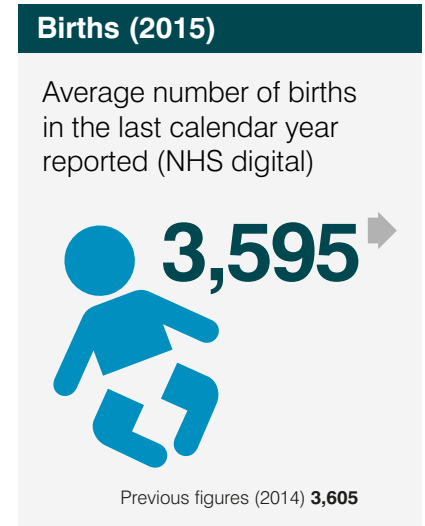
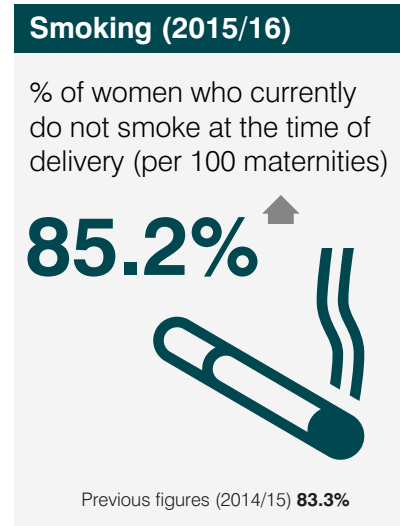
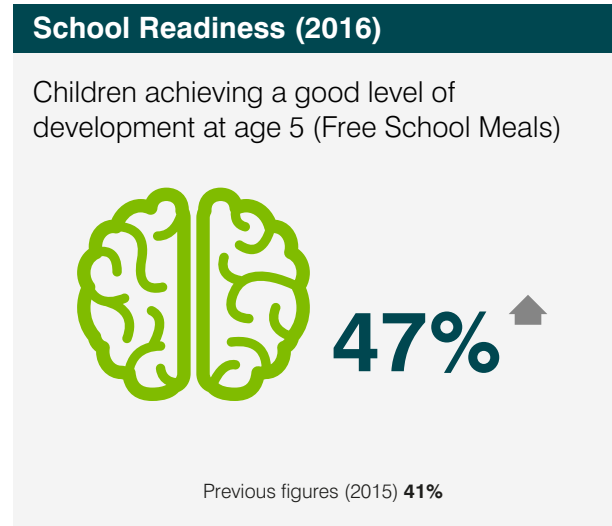
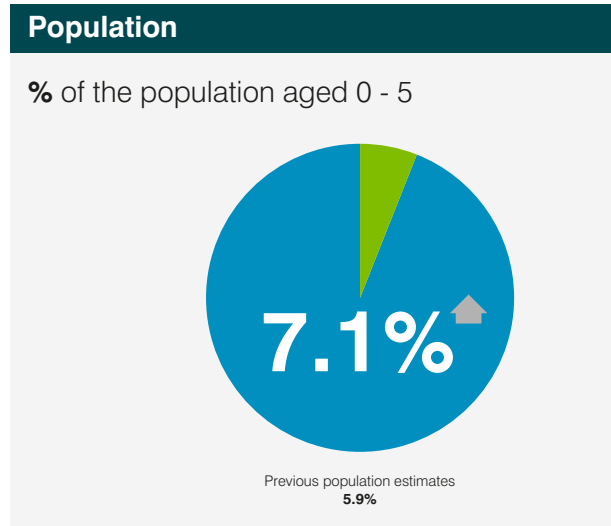


Approximate costs based on Band A property excluding parish precepts

Resident perceptions

Borough survey results	2016	2014
Residents satisfied with their local area as a place to live	72%	75%
Residents satisfied with the way the council runs things	65%	62%
Residents agree value for money provided by the council	50%	42%
Residents speak positively of the council (advocacy)	43%	37%
Residents say council acts on the concerns of residents	58%	56%
Residents say they trust the council	64%	62%
Residents say council keeps residents informed about services and benefits	61%	58%
Residents say people from different backgrounds get on well together	49%	55%





Start Well

GCSE results (2016)

5 or more A* - C GCSE's including English and Maths
All borough

58.2%
Previous figures (2015) **57.6%**

5 or more A* - C GCSE's including English and Maths
Looked After Children

25%
Previous figures (2015) **15%**



Special educational need (May 2017)

% of all pupils with some level of special educational need

15.24%
Previous figures (May 2016) **14.88%**

% of primary pupils with some level of special educational need

15.73%
Previous figures (May 2016) **15.55%**

% of secondary pupils with some level of special educational need

14.10%
Previous figures (May 2016) **13.48%**

January 2017 Census

Ofsted

	Good	Outstanding
Childcare on Non-Domestic Premises	73%	20%
Primary School	66%	29%
Secondary School	56%	17%

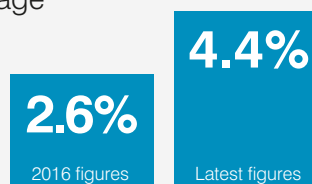
Not in Education Employment or Training

% of 16-18 not in education, employment or training (2016/17)

2.51%
Previous figures (2015/16) **5.9%**

English as an additional language (2017)

% pupils with English as an additional language



Outstanding schools



Free School Meals

Eligible for Free School Meals (May 2017)

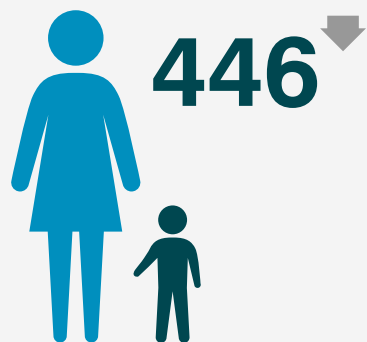


Previous figures (2016) **15%**

Start Well

Looked after children (2017)

Number of looked after children.



Previous figures **483**

Fostering/Adoption

% of Looked After Children Adopted



Previous figures **23%**

% of Looked After Children in Foster placement (31st March)



Previous figures **73%**



Children in need

Number of Children in Need (inc. Children in Care / Child Protection figures)



Previous figures **2,019**

Number of episodes of Children reported Missing or Absent from Home or Care

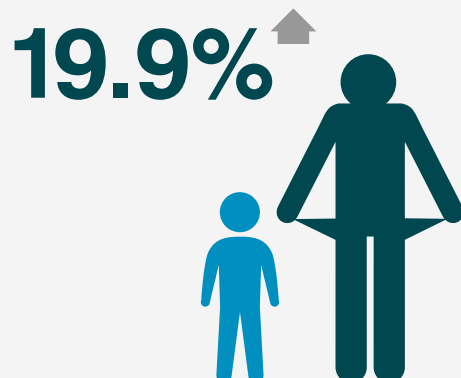


Previous figures **834**



Children in poverty (2014)

Children aged under 16 in poverty



Child protection plans

Number of children receiving support through a Child protection plan (as at May 2017)



Previous figures (2016) **272**

Early Help Assessments

Number Early Help Part 1 Assessments received



Previous figures **731**



Healthy life expectancy

Healthy life expectancy at birth - male (2013/15)

59.3 years

Previous figures **59.5 years**



Healthy life expectancy at birth - female (2013/15)

61.1 years

Previous figures **61.2 years**



Cancer screening

Percentage of patients attending cervical cancer screening (2016)

75%

Previous figures (2015) **75.5%**

Percentage of patients attending bowel cancer screening (2016)

57.2%

Previous figures (2015) **56.7%**

Percentage of women eligible, attending breast cancer screening

74%

Previous figures (2015) **74.1%**

Women in the resident population eligible for screening who were screened adequately within the previous 3 years (as at 31st March)



Smoking prevalence

Smoking prevalence in Adults - percentage of adults who do not smoke

82.3%



A&E Admissions

A&E Admissions

32,878

Previous figures **33,354**



Substance misuse hospital admissions (2013/15)

Hospital admissions due to substance misuse

(15-24 year olds Directly Standardised Ratio per 100,000 population)

218.7

Previous figures **216.4**



Teenage conceptions (2015)

Conceptions in women aged under 18 (per 1,000 females aged 15-17)

24.7

Previous figures (2014) **31.6**



Museums and Archives (2016/17)

Visits to Museum of Wigan Life

21,800
 Previous figures (2015/16) **24,076**

Number of visitors (including volunteers) to Archives and local studies

8,059
 Previous figures (2015/16) **8,607**

Lifestyle memberships

Number of individuals with a Lifestyle membership

71,149
 Previous figures (2015/16) **67,782**

Weight

Excess weight in Adults

69.40%

Leisure centres (2016/17)

Visits to leisure centres

6,066
 Previous figures (2015/16) **5,409**

Libraries (2016/17)

752,993
 Customers visited our libraries borrowing

380,655
 items

Wigan Council manages

15
 libraries

Previous figures **778,061** customers, **566,519** items, **15** libraries.

Physical activity (2015/16)

Percentage of physically active adults

60.4%
 Previous figures **54.6%***
 Based on a previous method of measuring physical activity

Participation rate in the top sports in the local area and the number of adults (16+) that participate at least once a month

Gym session **12.4%**

Swimming **8.7%**

Cycling **7.3%**

Alcohol

- % of Domestic Abuse Crimes which are Alcohol related: **41%** (Previous figures 43%)
- % of Violent Crimes which are Alcohol related: **26%** (Previous figures 33%)
- % of Violent Crimes which are Alcohol related and also Domestic abuse related: **13%** (Previous figures 19%)
- Number of Alcohol related Anti Social Behaviour incidents: **1,439** (Previous figures 1,649)
- Number of Alcohol related Youths Causing Annoyance incidents: **360** (Previous figures 358)

Crime (2016/17)

- Total number of crimes: **25,608** (Previous figures (2015/16) 21,867)
- % of Crime in Top 20% deprived areas: **49%** (Previous figures (2015) 50%)

Anti-social behaviour (2016/17)

- Anti-social behaviour incidents: **12,594** (Previous figures (2015/16) 13,056)
- % of Anti-social behaviour in Top 20% deprived areas: **49%** (Previous figures (2015) 50%)

Hate crime (2016/17)

- Total number of hate crimes: **384** (Previous figures (2015/16) 357)

Domestic Abuse (2016)

- Domestic Abuse Crimes: **1,868** (Previous figures (2015) 2,033)
- Domestic Abuse Incidents: **7,062** (Previous figures (2015) 7,426)
- % of Violent Crime = Domestic Abuse related: **25%** (Previous figures (2015) 38%)



Violent Crime

- Recorded Violent Crimes: **3,861** (Previous figures (2015) 2,893)



Residents Receiving Benefit Sanctions

1,368 Previous figures **4,420** (Jan-Dec '14)
 (April 15 - Mar 16)
 Both Jobseekers and Employment Support allowance sanctions



Residents claiming benefits



Previous figures (2015/16) **5%**

11.5%

of working age residents claiming out of work benefits

Previously **11.5%**

Crisis desk

Number of presentations to Crisis Desk (in the last financial year)

1,759
 presentations by
1,181
 people

(full year 2016/17)

Previous figures **3,628** presentations by **2,097** people (2015/16)

Social housing tenants

Home improvement

99% of tenants are satisfied with the major works that we carried out to improve their homes, such as replacing bathrooms, roofing, and improving the energy efficiency. Previous year's performance – 99%

Rent collected

We collected 96.61% of the rent due on council homes

Previous year's performance - 96.96%

Value for money

85% of tenants are satisfied that their rent represents value for money.

Previous year's performance – 85%



Universal Credit

Total Number of Universal Credit Claimants
 (2.3 % of Working Age Population)

4,664



Previous figures **2,950** (1.4% of WAP)
2,060 Unemployed (1% of WAP)

Number claiming Unemployed element
 (1.5% of Working Age Population)

2,985

Homes



Number of homelessness preventions

4,914

Previous figures **3,954** (2015/16)

Number of affordable homes delivered in the previous financial year



216

Previous figures **110** (2015/16)

Life expectancy male

Life expectancy at birth - male (2013/15)

77.7 years →

Previous figures **77.7 years**

Number of years lower life expectancy in deprived wards - male

11.5 years ↑

Previous figures **10 years**

Life expectancy female

Life expectancy at birth - female (2013/15)

81.2 years →

Previous figures **81.3 years**

Number of years lower life expectancy in deprived wards - female

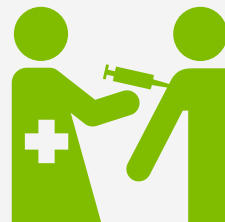
10 years →

Previous figures **9.7 years**

Flu vaccine

Percentage flu vaccine coverage (aged 65+)

72% →



Previous figures **72%**

Households

percentage of households populated by over 65s

20% →

Previous figures (Jan-Dec 2015) **20%**



percentage of households where over 65s live alone

12% →

Previous figures (Jan-Dec 2015) **12%**



percentage of households where all householders are over 65

8% →

Previous figures (Jan-Dec 2015) **8%**



Cardiovascular mortality

Under 75 mortality rate for Cardiovascular Diseases (persons) (rate per 100,000)

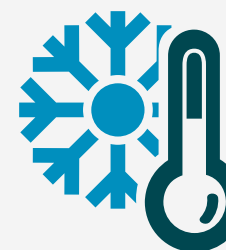
93.2 ↓



Previous figures **95.6**

Winter deaths (2011/14)

Ratio of extra deaths from all causes that occur in the winter months compared with the expected number of deaths, based on the average of the non-winter deaths



24.1 (ratio) ↑

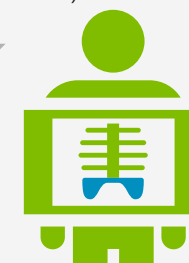
Previous figures (pre 2010) **17.3 (ratio)**

Hip fractures (2015/16)

Hip fractures in people aged 65 and over (rate per 100,000 population)

636 ↓

Previous figures **733**



Dementia patients

Estimated Dementia Diagnosis rate

69.2%

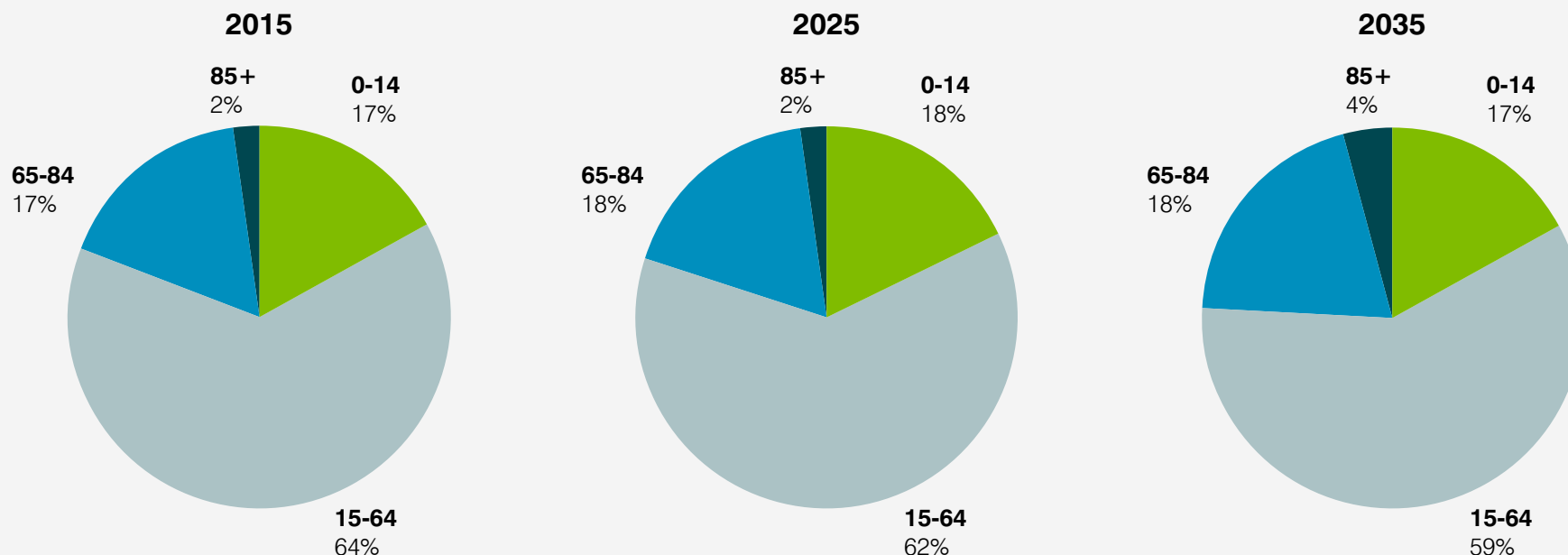
Emergency admissions with a mention of dementia on admission

4,863 →

Previous figures (2014/15) **4,830**



Ageing Population



The projections for Wigan have been split to show the percentage breakdown of the age groups 0-14, 15-64 and 85+.

The charts show a decrease in the percentage for the age group 15-64 years from 64% in 2015 to 62% in 2025 and 59% in 2035.

The age group 65-84 is predicted to rise from 17% to 18% by 2035.

The percentage of persons aged 85+ is projected to increase and will increase from 2% to 4% by 2035.

Delayed transfers of care (2016/7)

Patients unable to be discharged from hospital due to delay in transfer of care (rate per 100,000)

Latest figures
6.3 ↑
 (2015/16) 5.2

Self directed support (2016/7)

Residents in social care receiving self directed support

Latest figures
99.2% ↑
 (2015/16) 89.3%

Hospital discharge (2016/17)

Residents aged 65+ still at home 91 days after discharge from hospital into reablement/rehabilitation

Latest figures
93.4% ↑
 (2015/16) 79.7%

Growth

Value of Wigan's economy

£4.7 Billion



Businesses in the borough (2016)

8,560 ↑

Previously (2015) **8,250**



Commuting patterns of Wigan residents

Net change in population, (2011)

Inflow 27,614

Outflow 59,800

Change -32,186



Earnings (2016)

Average weekly earnings for residents in the Borough

£457.10 ↓

Previous figures (2015) **£482**



Employment (2016)

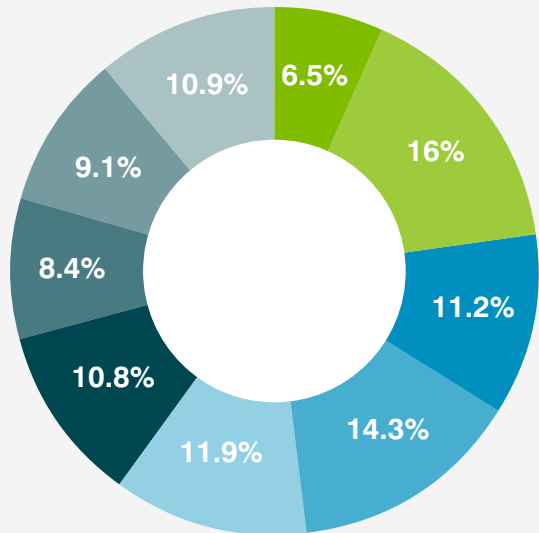
120,500

Previously (2015) **117,200**

The number of residents employed in the private sector, with **34,600** employed in the public sector.



Occupations in Wigan



- Occupations**
- Managers, Directors and Senior
 - Professional Occupations
 - Associate Professional and Technical
 - Administrative and Secretarial
 - Skilled Trades Occupations
 - Caring, Leisure and other service occupations
 - Sales and Customer Service occupations
 - Process Plant and Machine Operatives
 - Elementary Occupations

Qualifications

NVQ level 2 or above **68%** ↓

Previous figures (Jan-Dec 2015) **70.8%**

NVQ level 3 or above **46%** ↓

Previous figures (Jan-Dec 2015) **51.1%**

NVQ level 4 **27.1%** →

Previous figures (Jan-Dec 2015) **28.4%**

No qualifications **10.8%** ↑

Previous figures (Jan-Dec 2015) **8.4%**



Some graphics courtesy of The Noun Project

