

Locality Profiles

# Locality 5 - Atherton, Tyldesley and Astley

Children and Young People's Services

Joint Intelligence Unit

April 2014

# Contents

	<u>Page</u>
Overview	3
Population	4
Social Care	7
Hospital Activity	12
Education	20
Benefits	32
Confident Families, DAAT & Crime	36
Matrix	39
Reference Map	41
Notes on Datasets	42

## Overview

Situated in the north of the Borough, Locality 5 has a general population of 51,288 of which 11,478 (22.4%) are 18 or younger.

There are some trends in the data. Hag Fold North has the highest rate of children living in poverty, the highest rate of children 0-16 claiming DLA, the highest rate of lone parent benefit claimants and the highest number of children living in out of work benefit households. Hag Fold North has the highest number of confident families in locality 5.

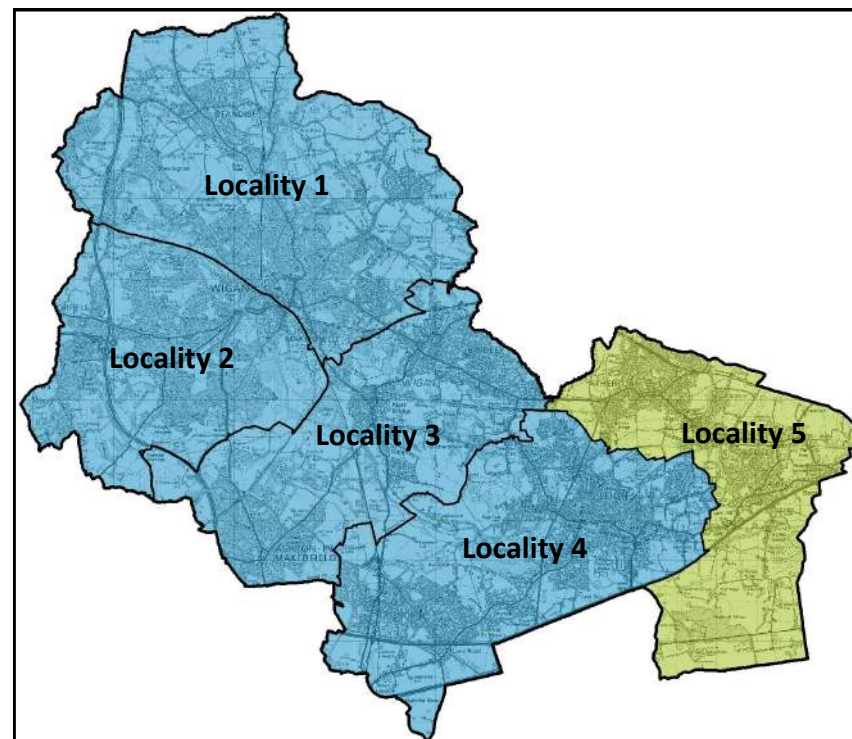
Hag Fold West has the highest number of referrals to children's social care and the highest number of children eligible for free school meals. Hag Fold South has the highest concentration of children with 15% unauthorised absence and the highest number of NEETS in locality 5.

Dangerous Corner has the highest number of accident and emergency attendances for under 5s, the highest number of non elective admissions for under 5s and the highest number of non elective activity for intentional and unintentional injuries within locality 5.

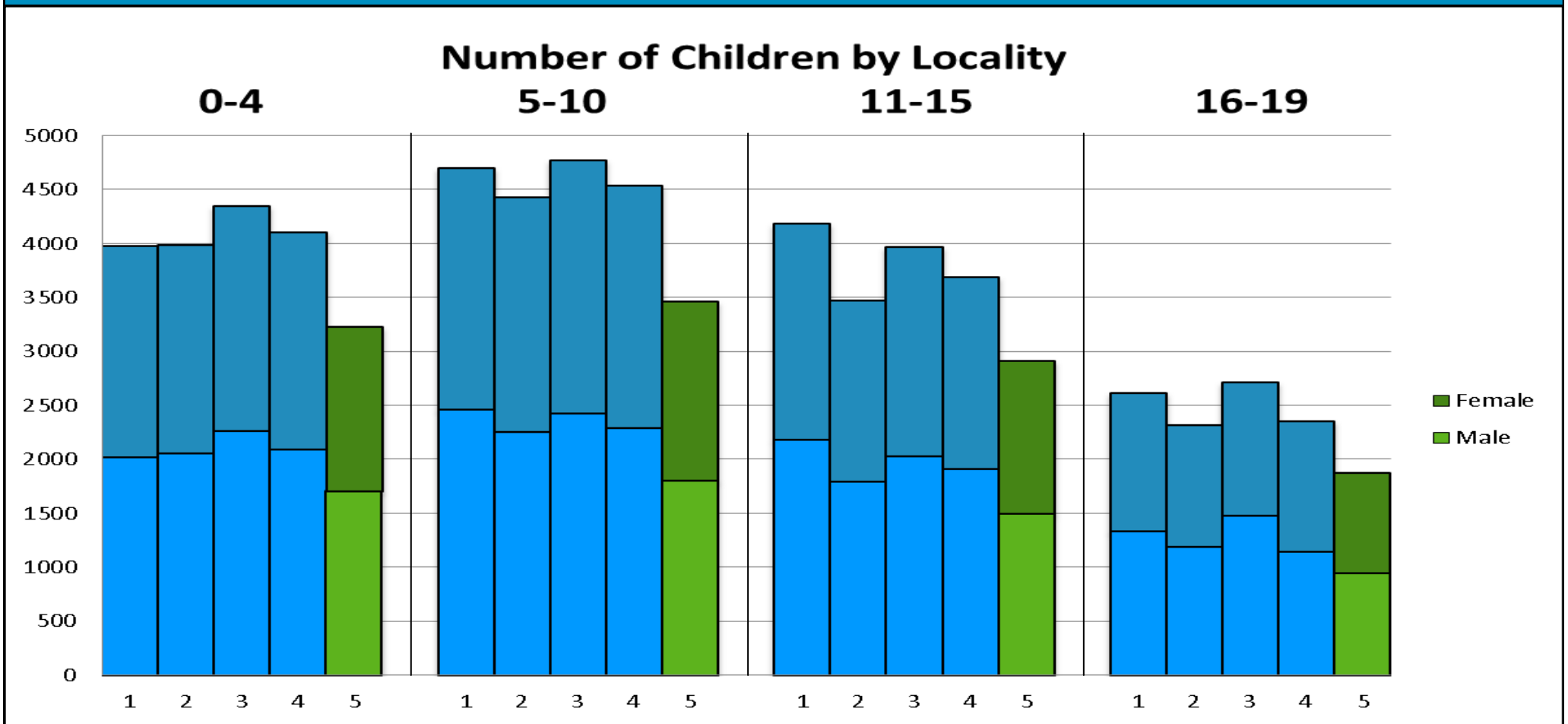
Shakerley has the highest number of CAF assessments opened and the highest number of gateway referrals opened. Shakerley has the lowest level of attainment at key stage 2 and key stage 4 and the lowest rate of EYFSP children showing a good level of development. Also, Shakerley has the highest rate of children with a level of SEN at secondary level education in locality 5.

To gain a more general overview of each LSOA, consult the matrix on pages 39-41.

**NB:** A locality rank is given for each element. If a locality is ranked 1st, this would mean that the locality has the highest numbers of that element. A rank of 1st in Looked After Children would mean that that locality has the highest numbers of Looked After Children. Red lines on graphs indicate locality average. As some of the datasets contain low figures, any values under 5 (or under 10 for social care) have been suppressed to avoid identification of individuals.



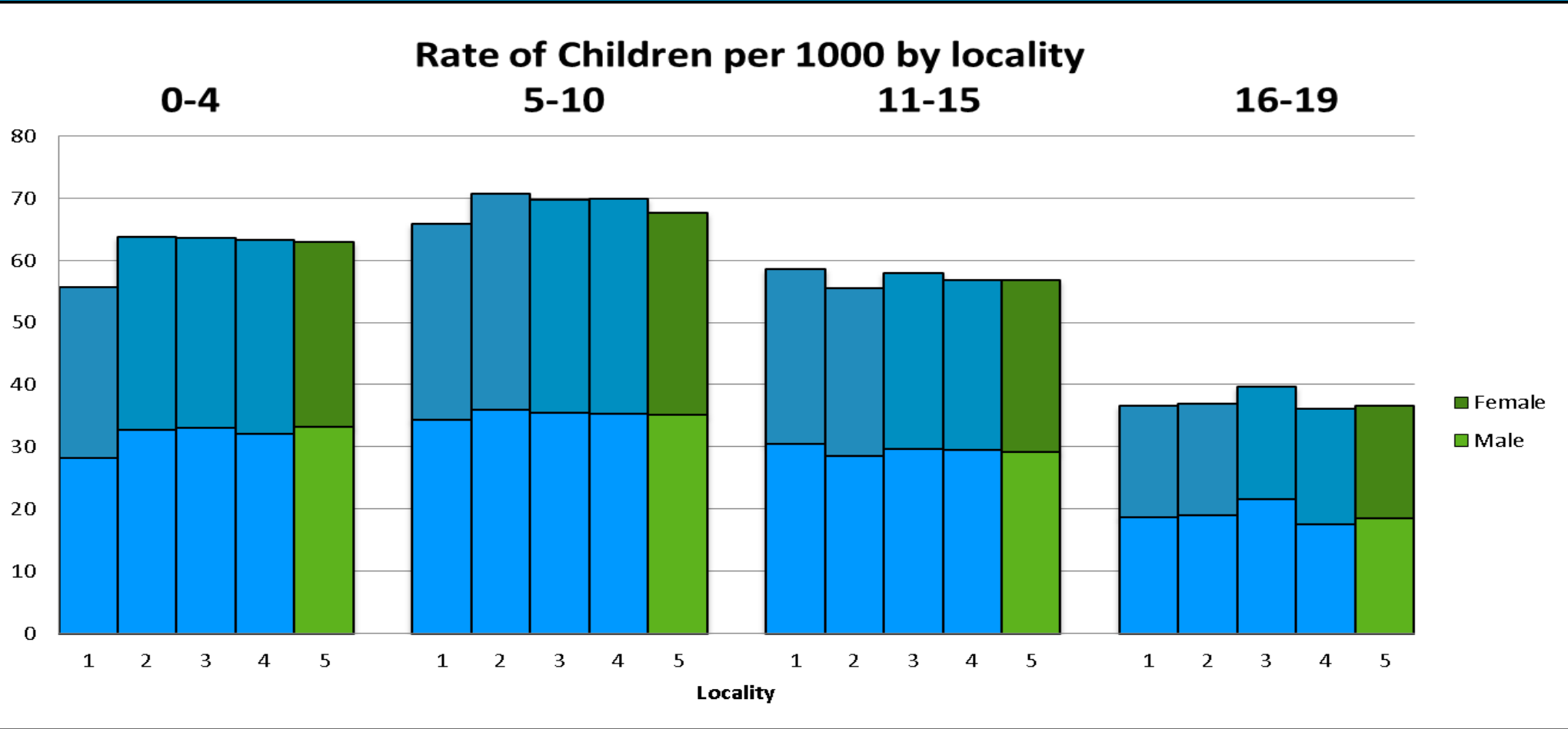
## Population—Actual Figures



### Overview

The number of children in locality 5 is lower than the other 4 localities, although this is due to locality 5 having a generally lower population. The graph illustrates an even mix of males and females across all four age bands.

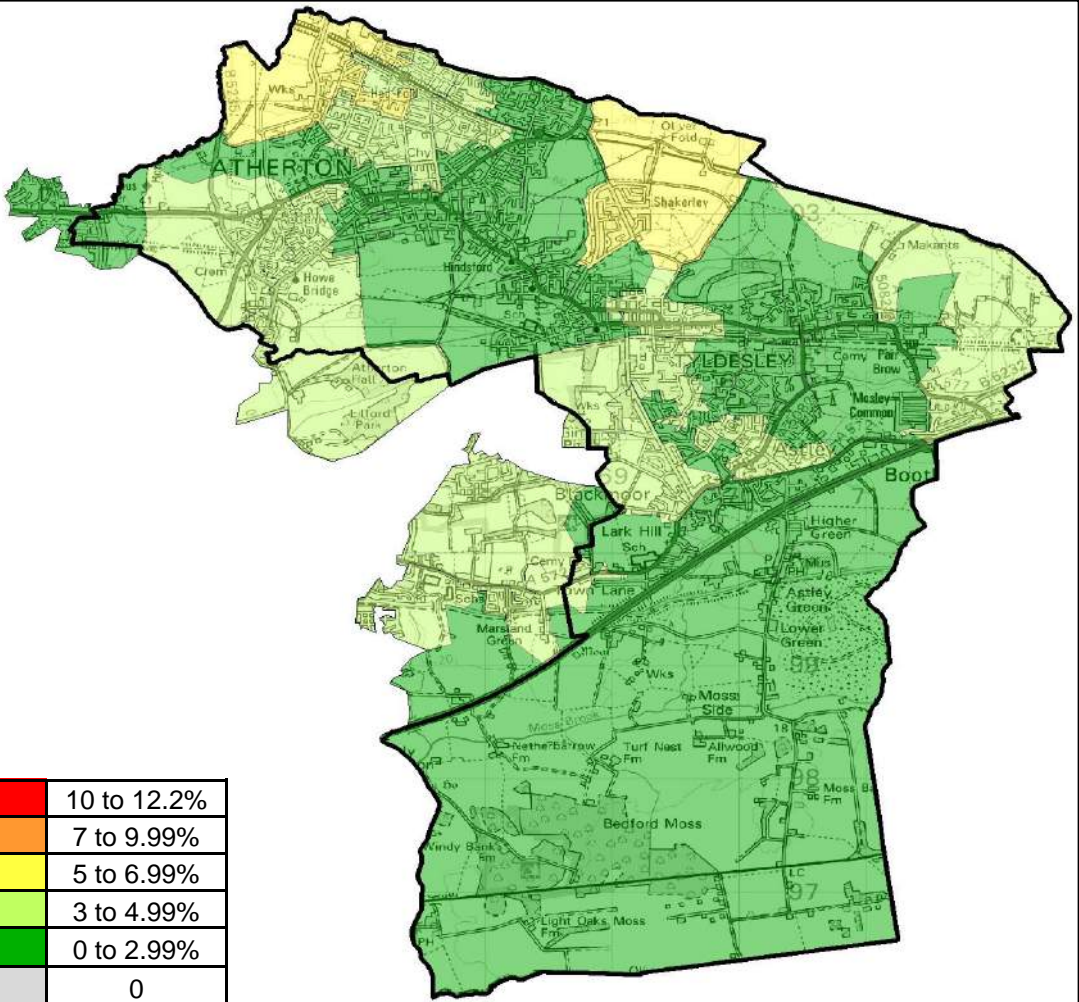
# Population—Rates per 1000



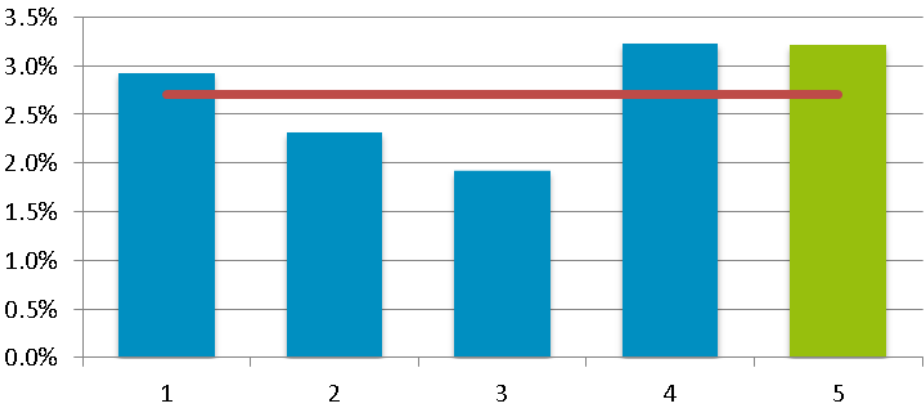
## Overview

The rate of children is comparable in all five Gateway localities for all age groups with the exception of 0-4 year olds in locality 1.

# BME Breakdown



Rate of Non-White British in Population by Locality



## Overview

Locality 5 has the second highest rate of Non-White British with 3.2% identified. Shakerley has the highest concentration of Non-White British within the locality with 5.2% identified.

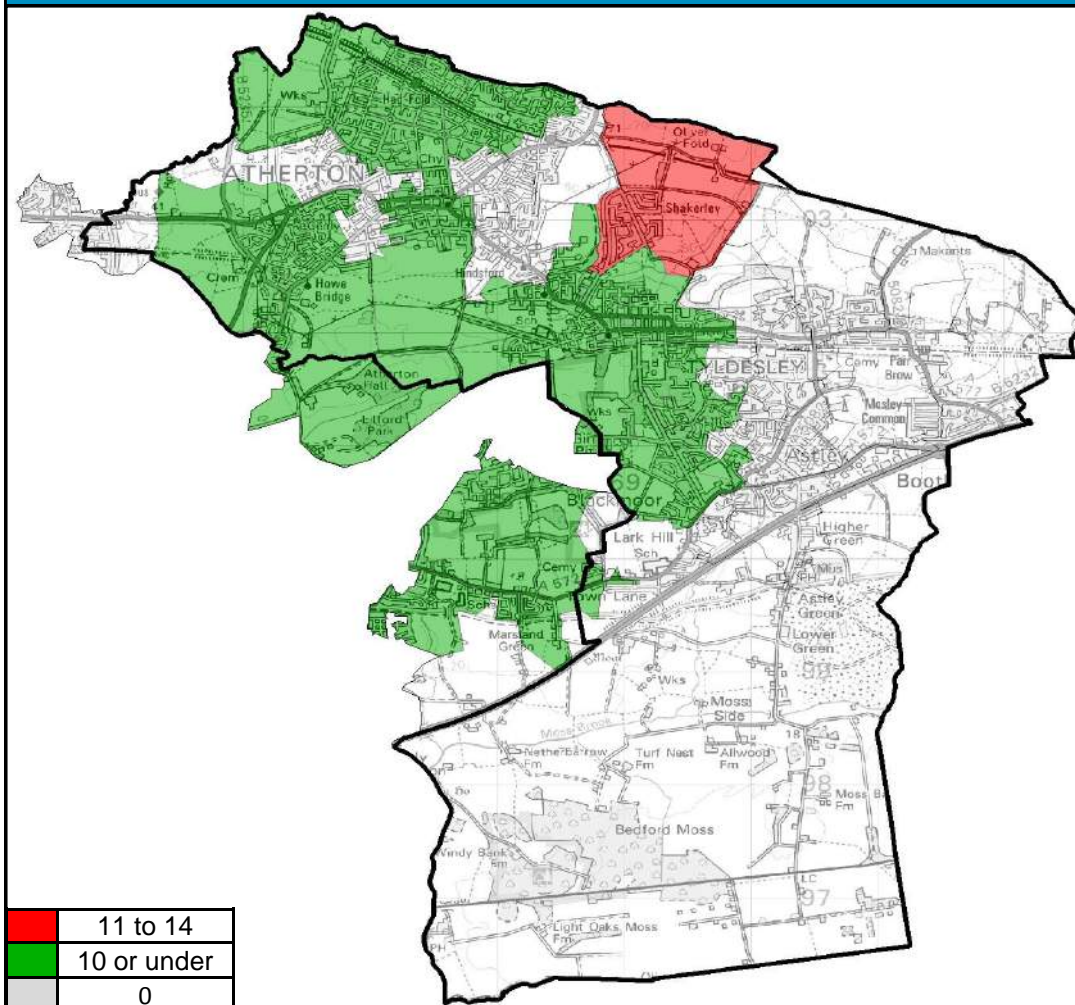
The average rate across all localities for Non-White British in population is 2.7%.

Wigan Council is in the first quartile for lowest rates of Non-White British when compared with statistical neighbours.

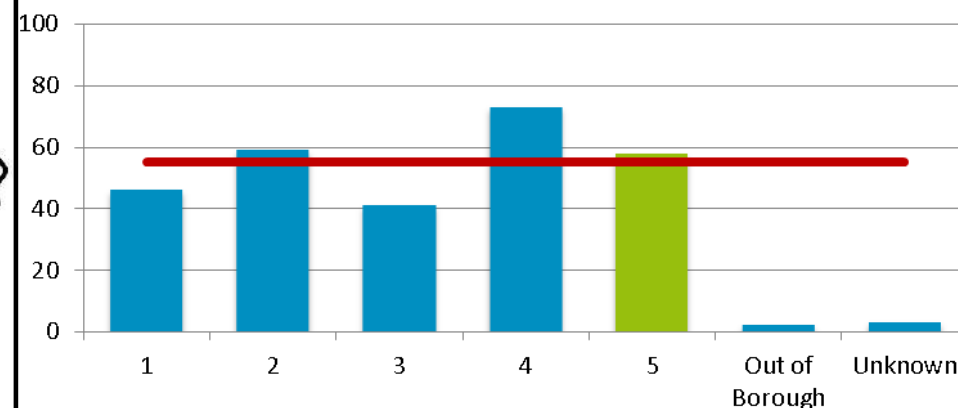
4th	3rd	2nd	1st
-----	-----	-----	-----

Locality Rank: 2nd  
Highest Concentration: Shakerley

## CAF Assessments (Opened)



### Number of CAF Assessments Opened by Locality



### Overview

Locality 5 had the third highest number of CAF assessments opened in 2013 across all localities with 58 assessments. The highest concentration of CAF assessments opened was in Shakerley with 14—the highest in the borough..

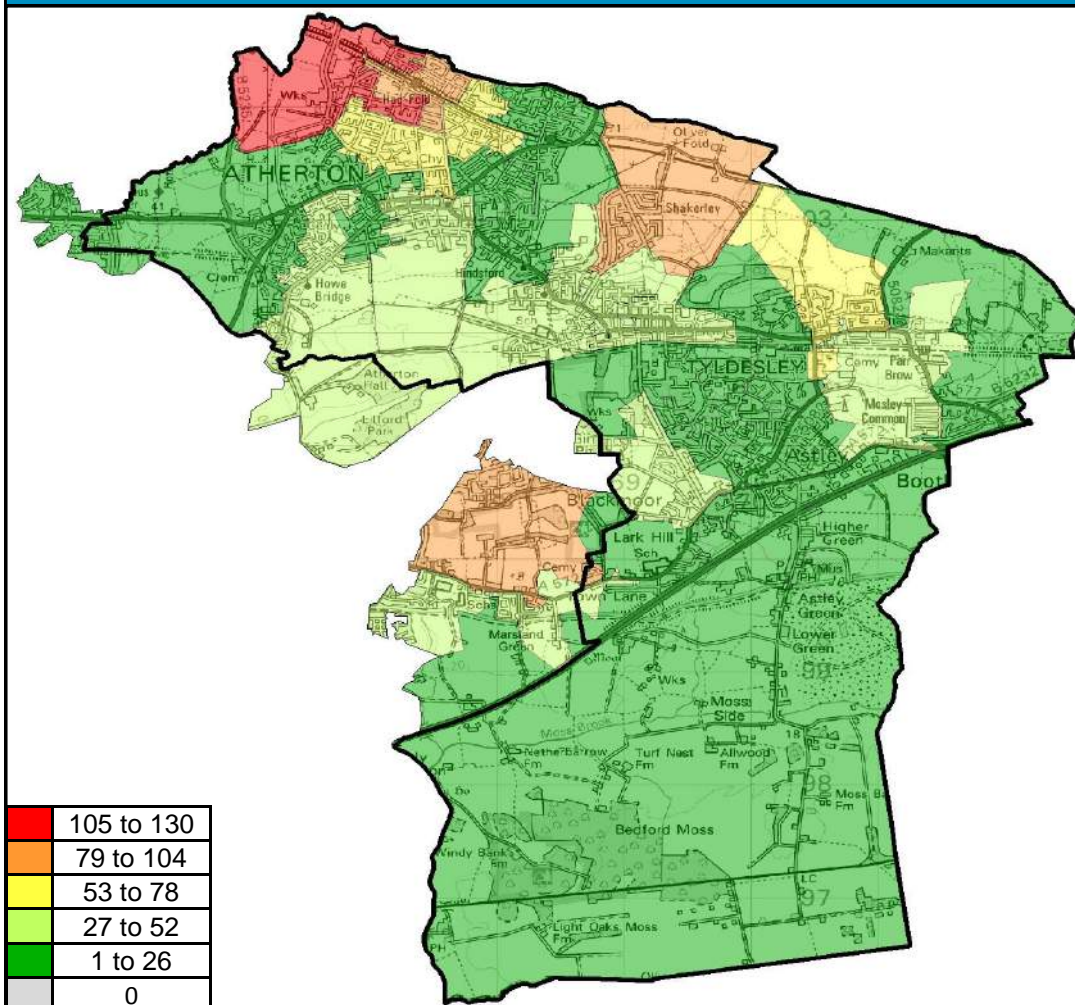
The average CAF assessments across all localities is 55.

**Locality Rank: 3rd**

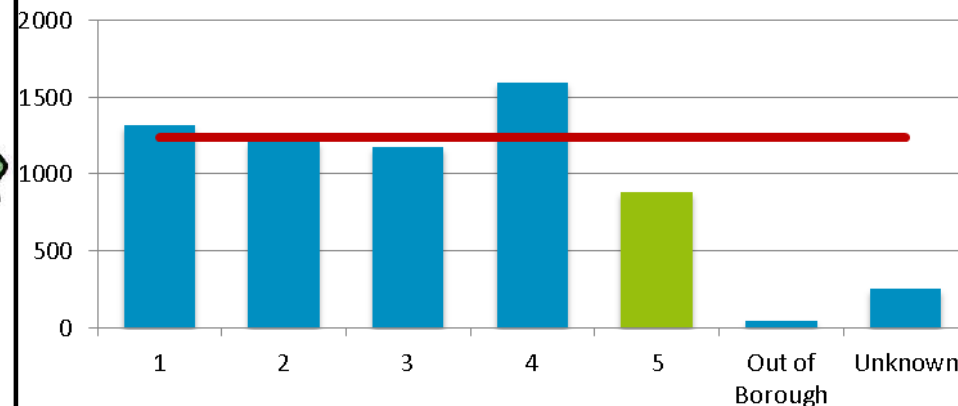
**Highest Concentration: Shakerley**



## Referrals to Children's Social Care



### Number of Referrals to Children's Social Care by Locality



### Overview

Locality 5 had the lowest number of referrals to Children's Social Care in 2013 of all Wigan Council's localities with 880 referrals.

Hag Fold West had the most referrals of any LSOA in the locality with 106 referrals.

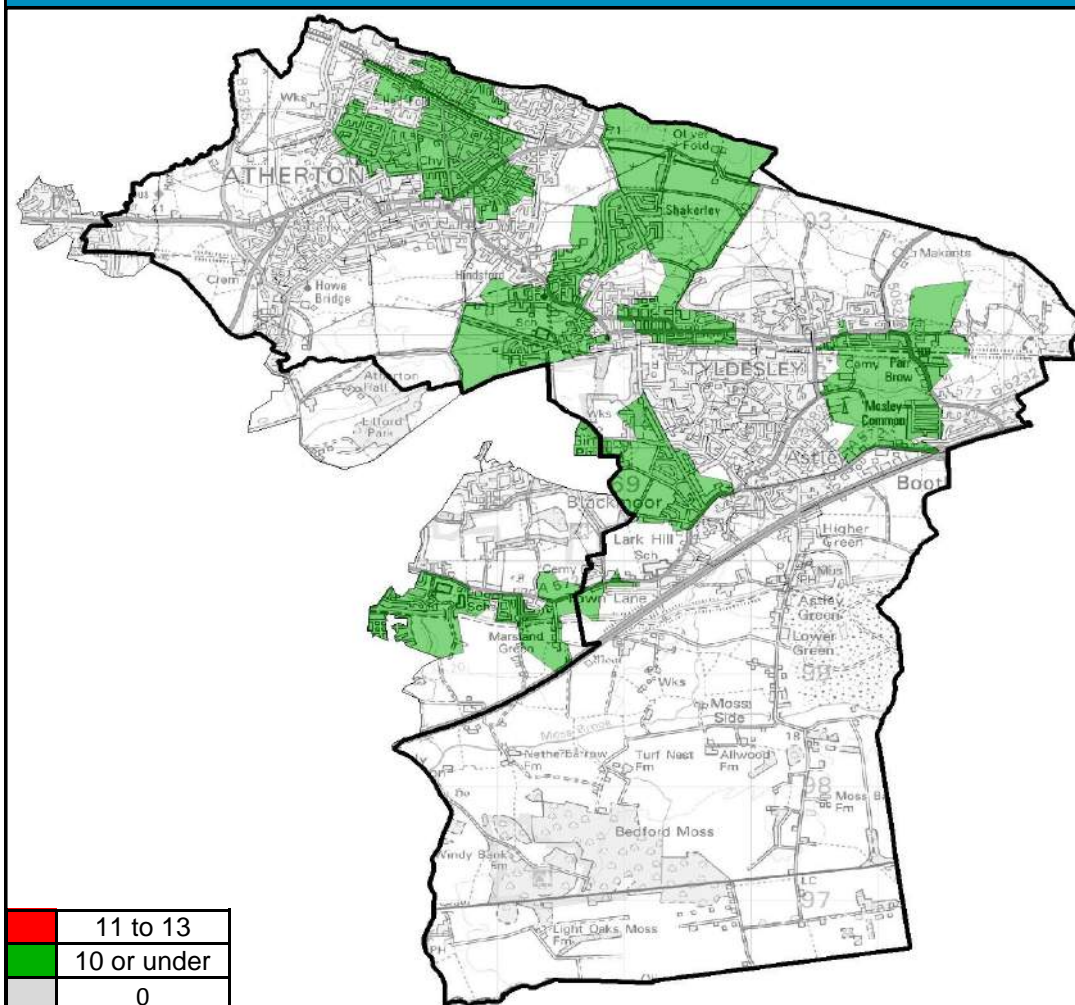
The average number of referrals to Children's Social Care in 2013 across all of the borough's Localities was 1238.

**Locality Rank: 5th**

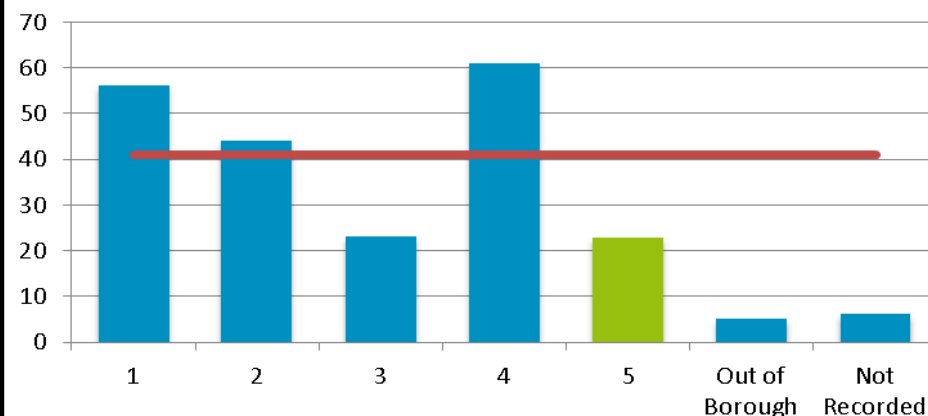
**Highest Concentration: Hag Fold West**



# Child Protection Plans



## Number of Children with a Child Protection Plan by Locality



## Overview

Locality 5 has the lowest number of Children with a Protection Plan with 23 children identified.

The highest number of Children with a Protection Plan are situated in Hag Fold East.

The average number of Children with a Protection Plan across the 5 localities is 41 children.

Wigan Council is in the second quartile for rates of CPP when compared with statistical neighbours

**Locality Rank: 5th\***  
**Highest Concentration: Hag Fold East**

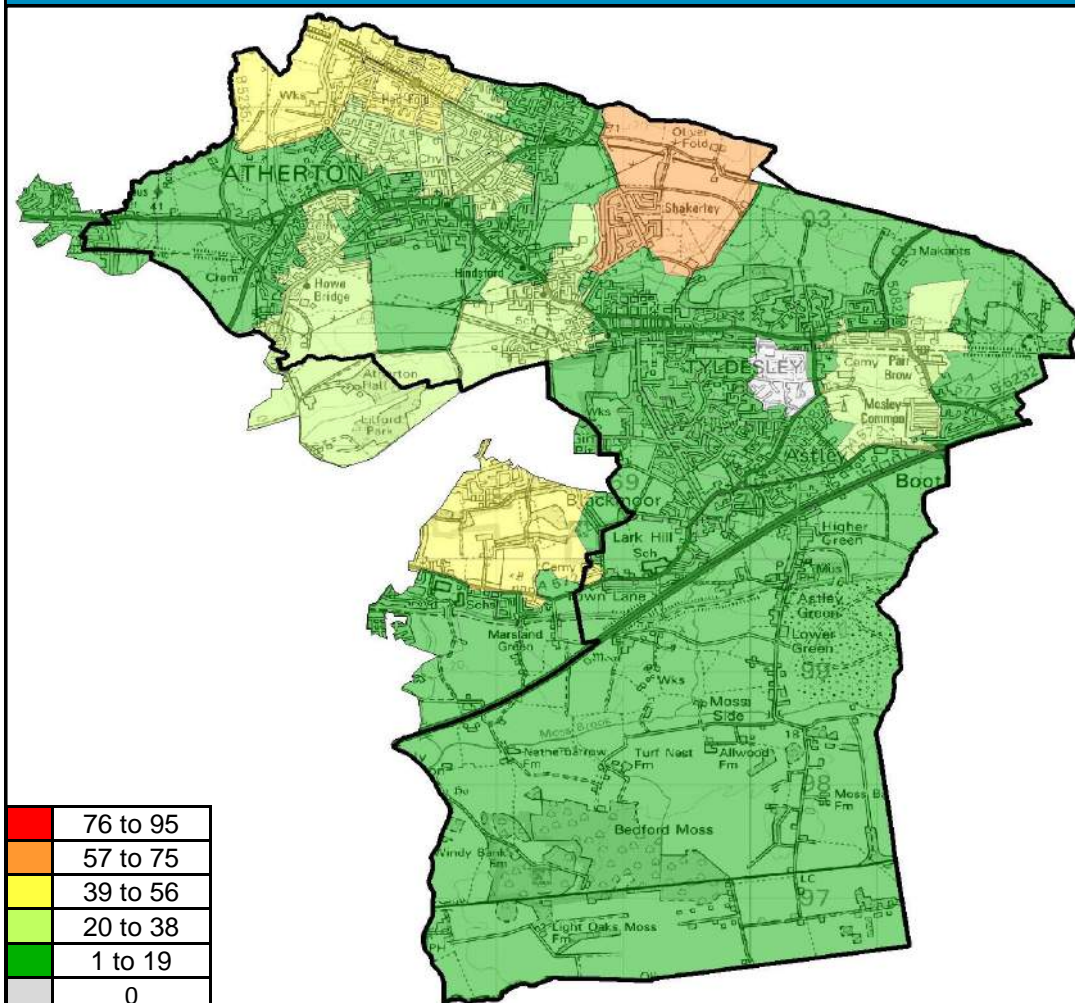
4th

3rd

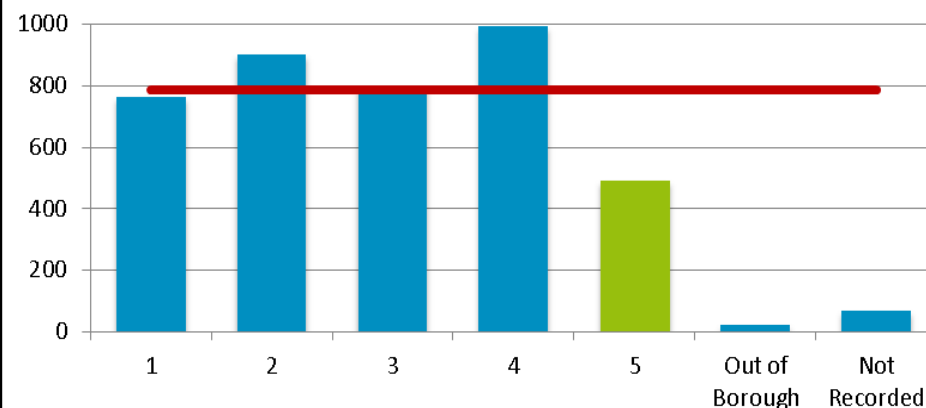
2nd

1st

## Gateway Referrals (Opened)



### Number of Gateway Referrals Opened by Locality



### Overview

Locality 5 had the lowest number of Gateway referrals opened in 2013 of all Wigan Council's localities with 491 opened.

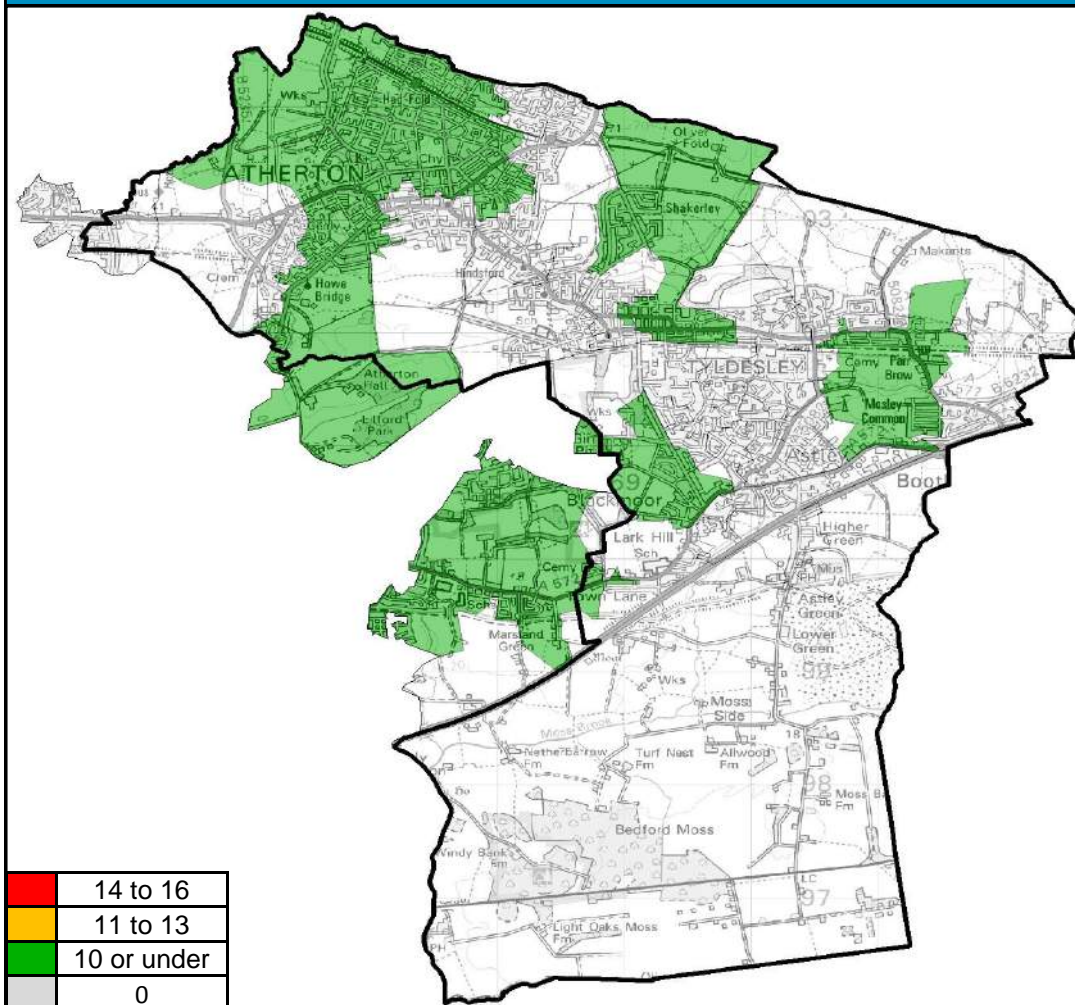
The area with most gateway referrals opened in 2013 is Shakerley with 75

The average number of opened gateway referrals in 2013 was 787.

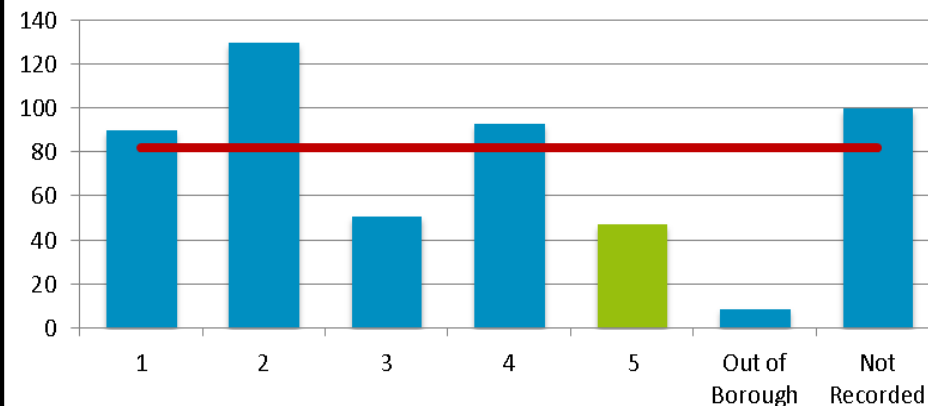
**Locality Rank: 5th**

**Highest Concentration: Shakerley**

## Looked After Children



Number of Looked After Children by Locality



## Overview

Locality 5 has the lowest number of Looked After Children of all Wigan Council's localities with 47 identified.

The highest number of Looked After Children are situated in Hag Fold North and Hag Fold South

The average number of Looked After Children for all of the localities is 82 .

Wigan Council is in the second quartile for rates of LAC when compared with statistical neighbours

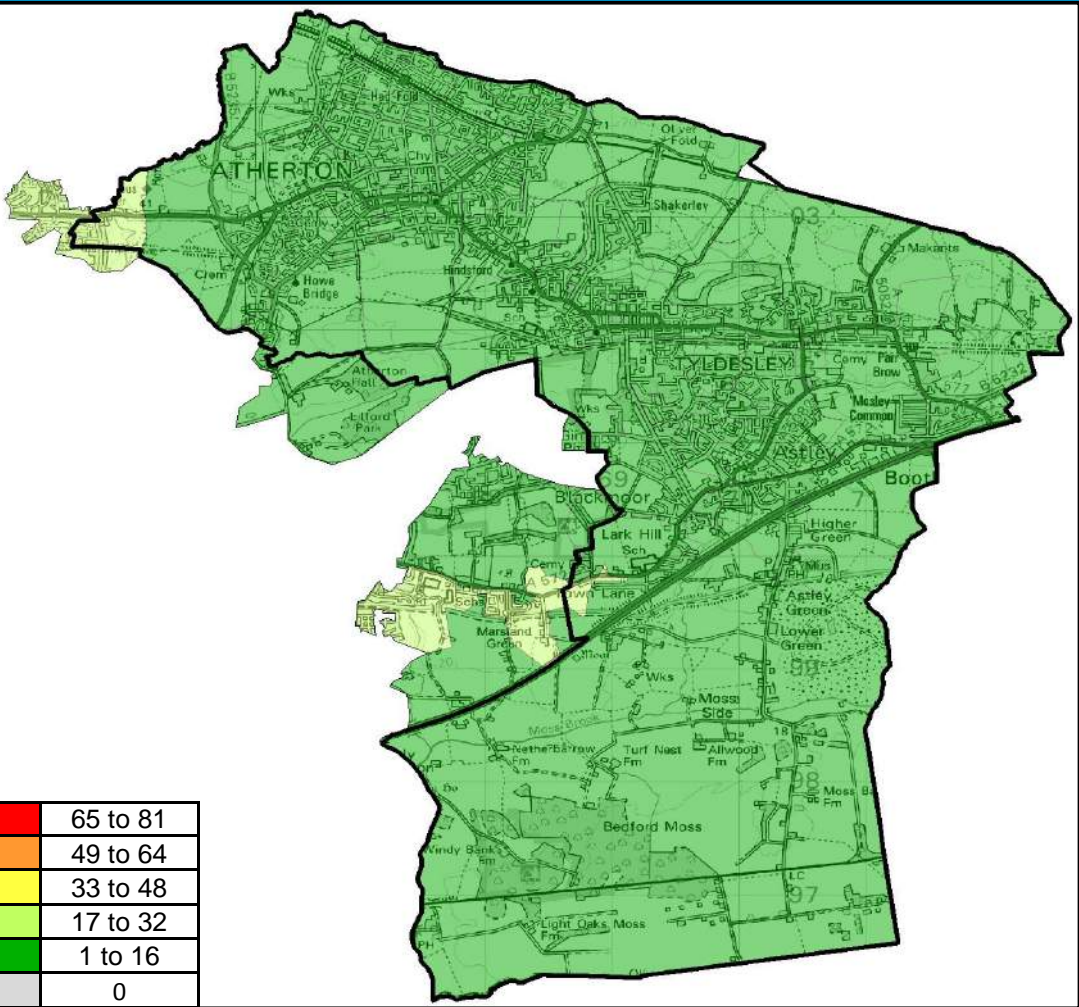
4th	3rd	2nd	1st
-----	-----	-----	-----

**Locality Rank: 5th**

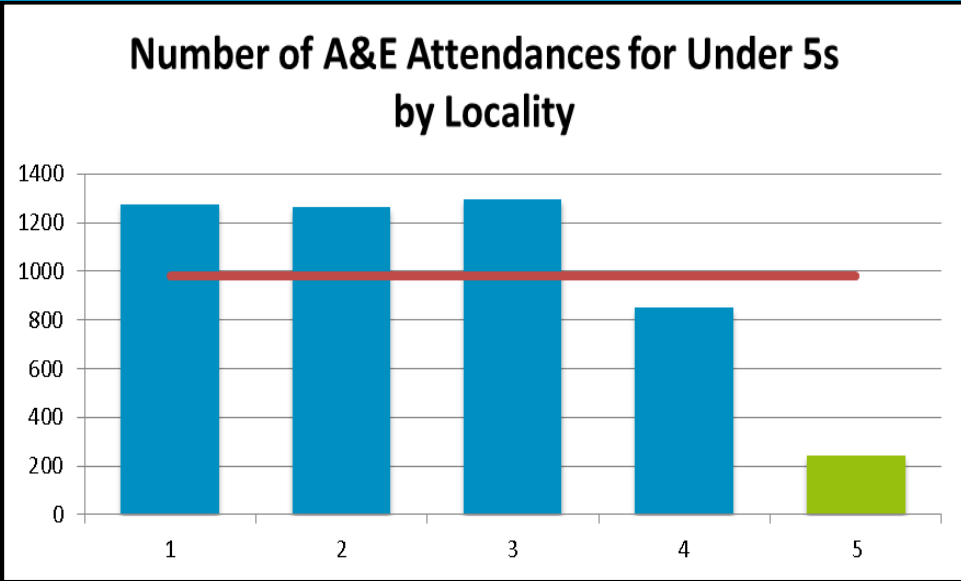
**Highest Concentration: Hag Fold North & South**



# A&E Attendances for Under 5s



**Locality Rank: 4th**  
**Highest Concentration: Dangerous Corner**



## Overview

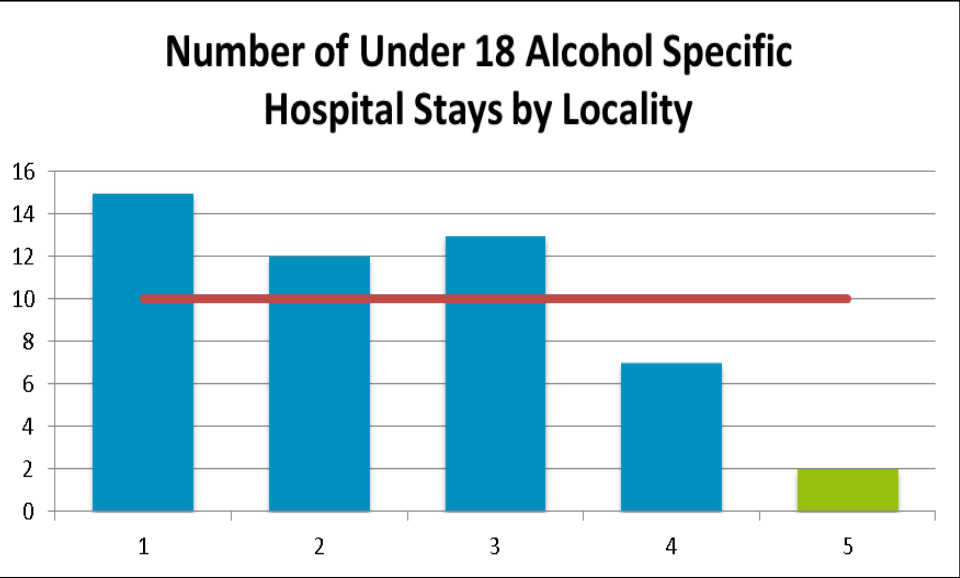
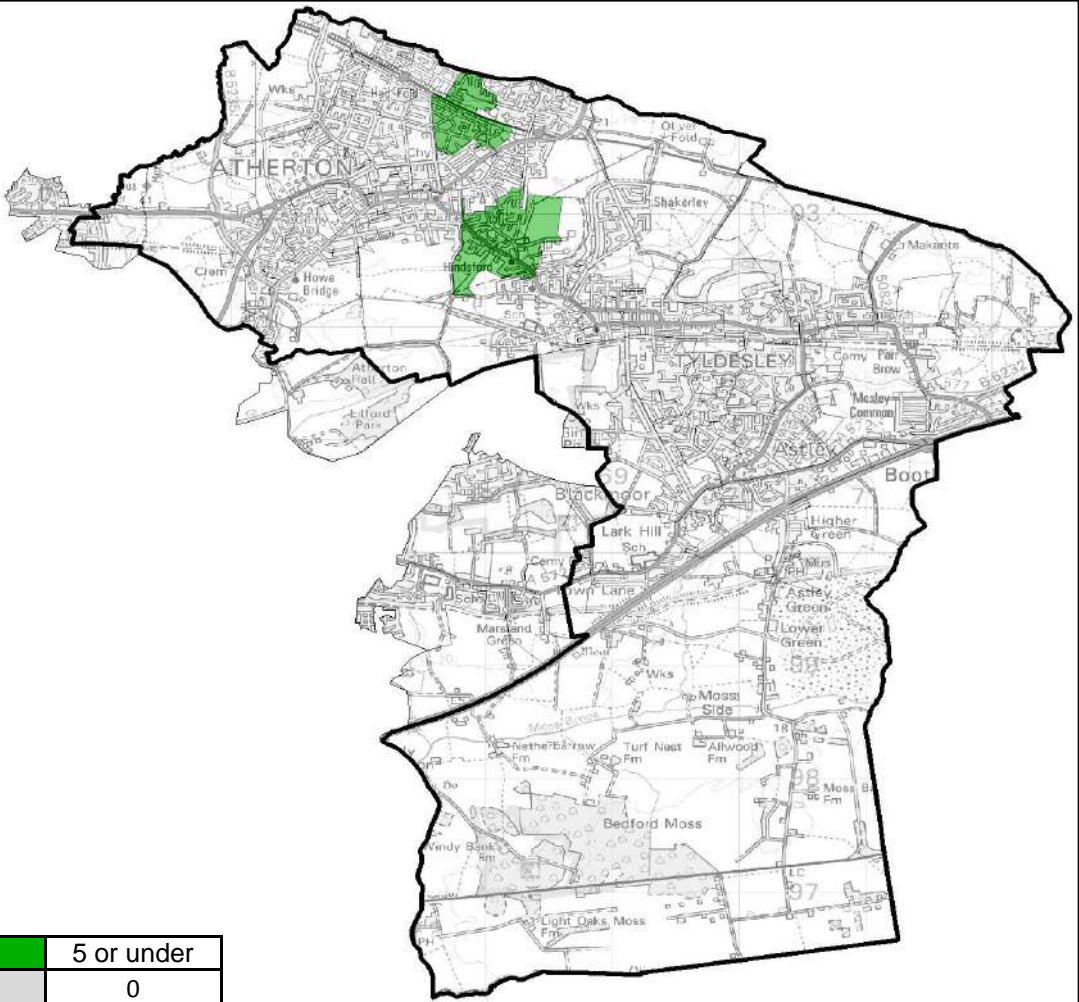
Locality 5 had the lowest number of A&E attendances for under 5s between April 13 and February 14 of all Wigan Council’s localities with 240 attendances.

The areas with the highest number of attendances are closer to Wigan Hospital. Areas further away from the centre may visit other hospitals.

The average number of admissions across all of the Borough’s Localities is 983.

Wigan Council is in the third quartile for rates of A&E Attendances for under 5s when compared with national averages			
4th	3rd	2nd	1st

# Alcohol Specific Hospital Stays for Under 18s



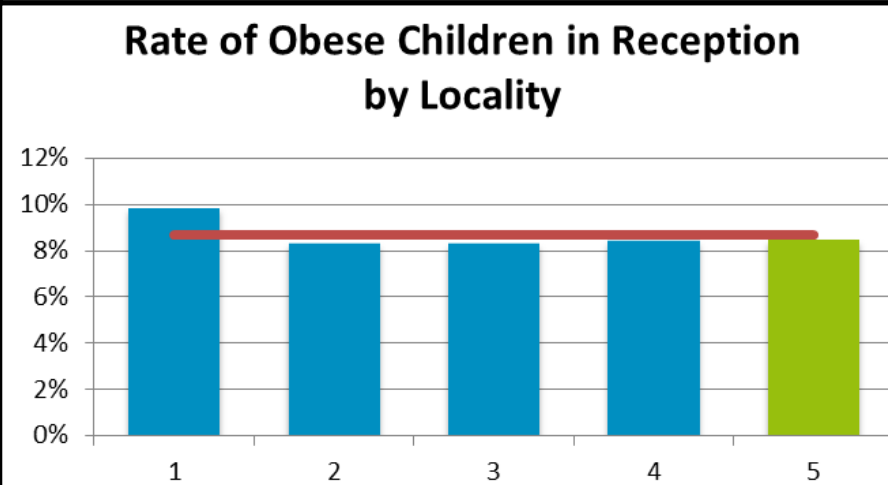
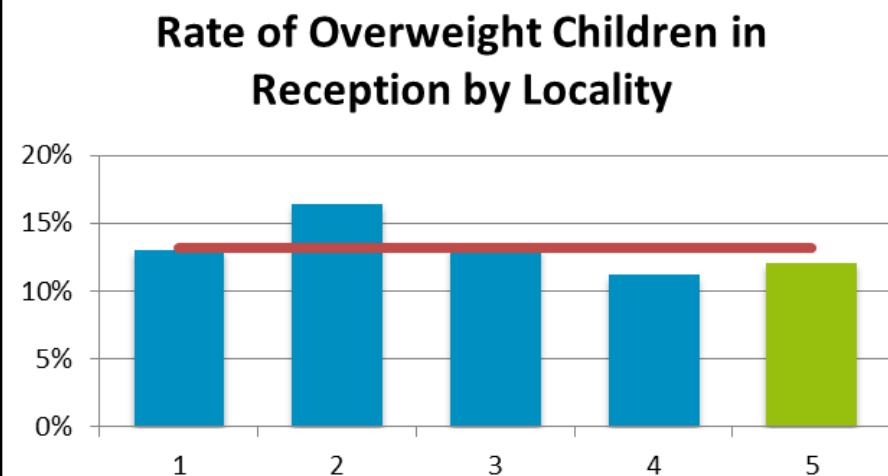
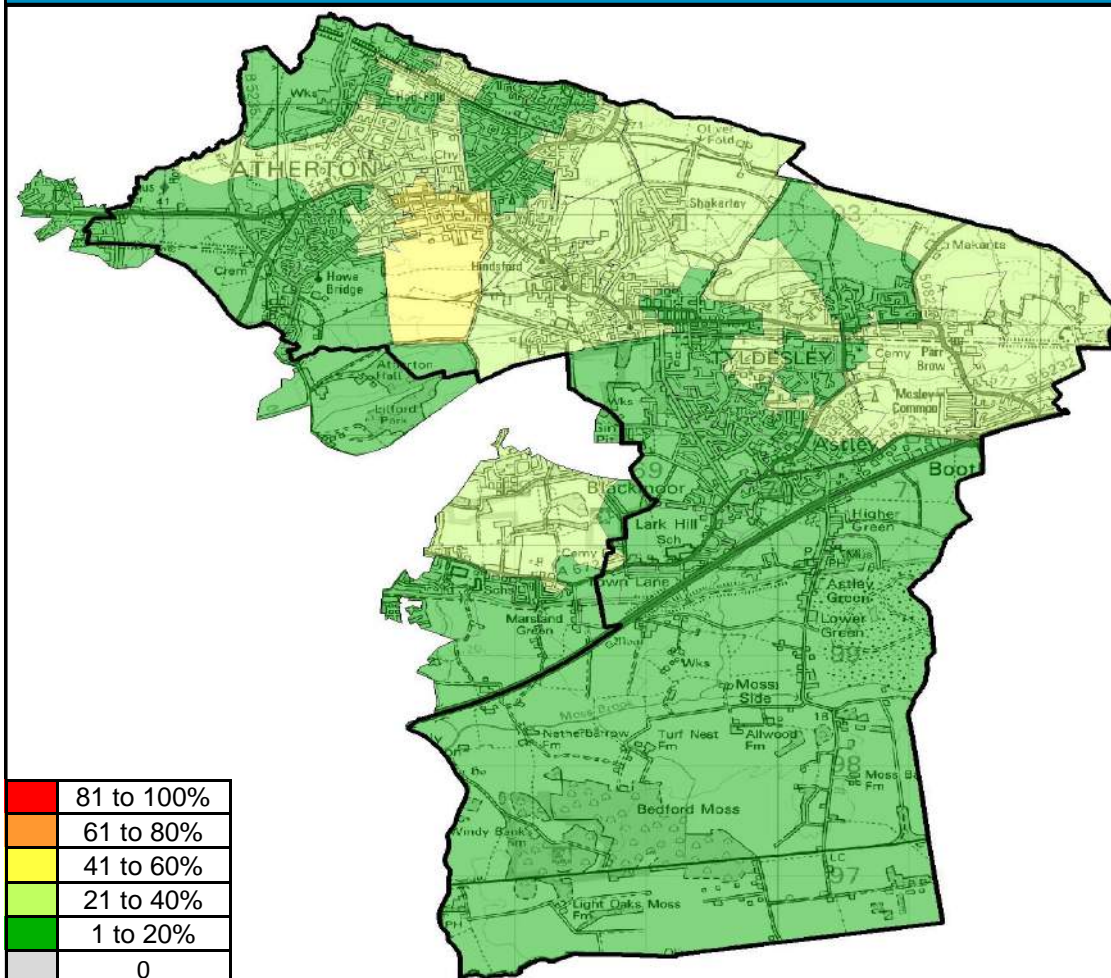
## Overview

Locality 5 has the lowest number of Under 18 alcohol specific hospital stays with 2 hospital stays identified.

The average number of Under 18 alcohol specific hospital stays across all localities was 10.

Locality Rank: 5th

# Child Obesity (Reception)



## Overview

Locality 5 has the second lowest rate of overweight and obese children in reception when compared to other localities in the borough. Atherton Centre had the highest rate of any LSOA in locality 5.

Wigan Council is in the second quartile for performance for rates of child obesity in reception when compared with national averages

4th

3rd

2nd

1st

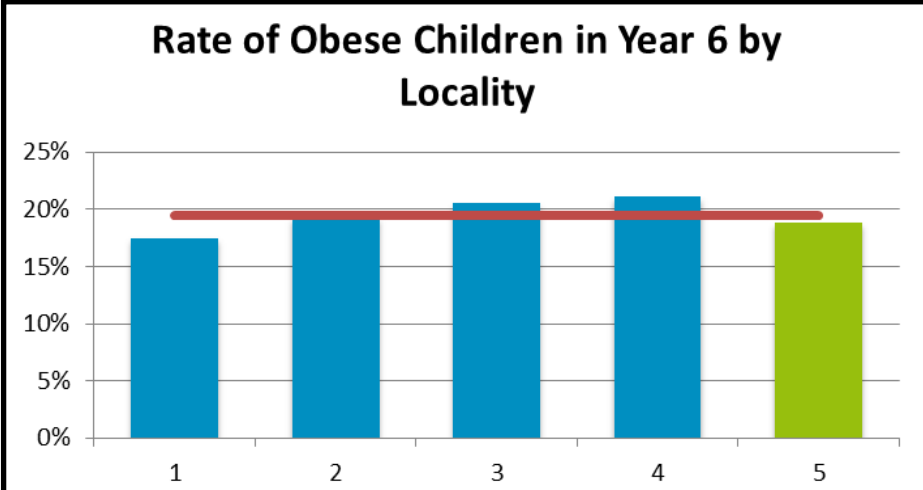
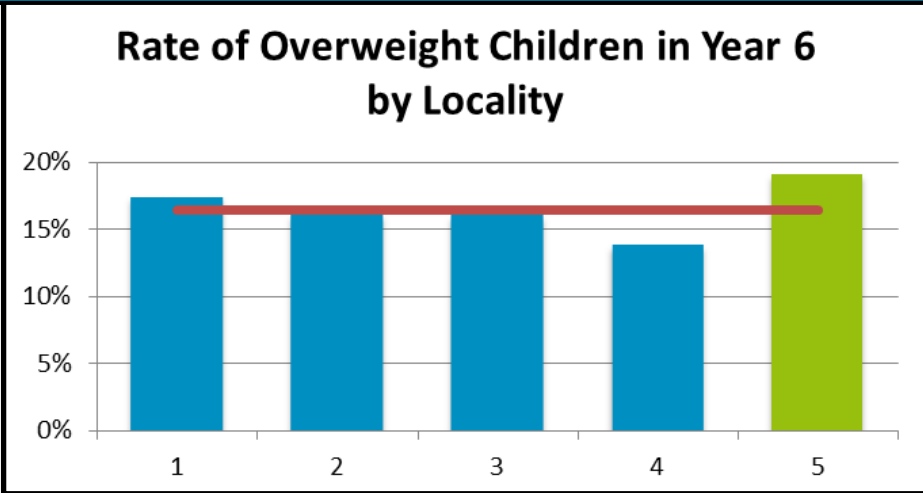
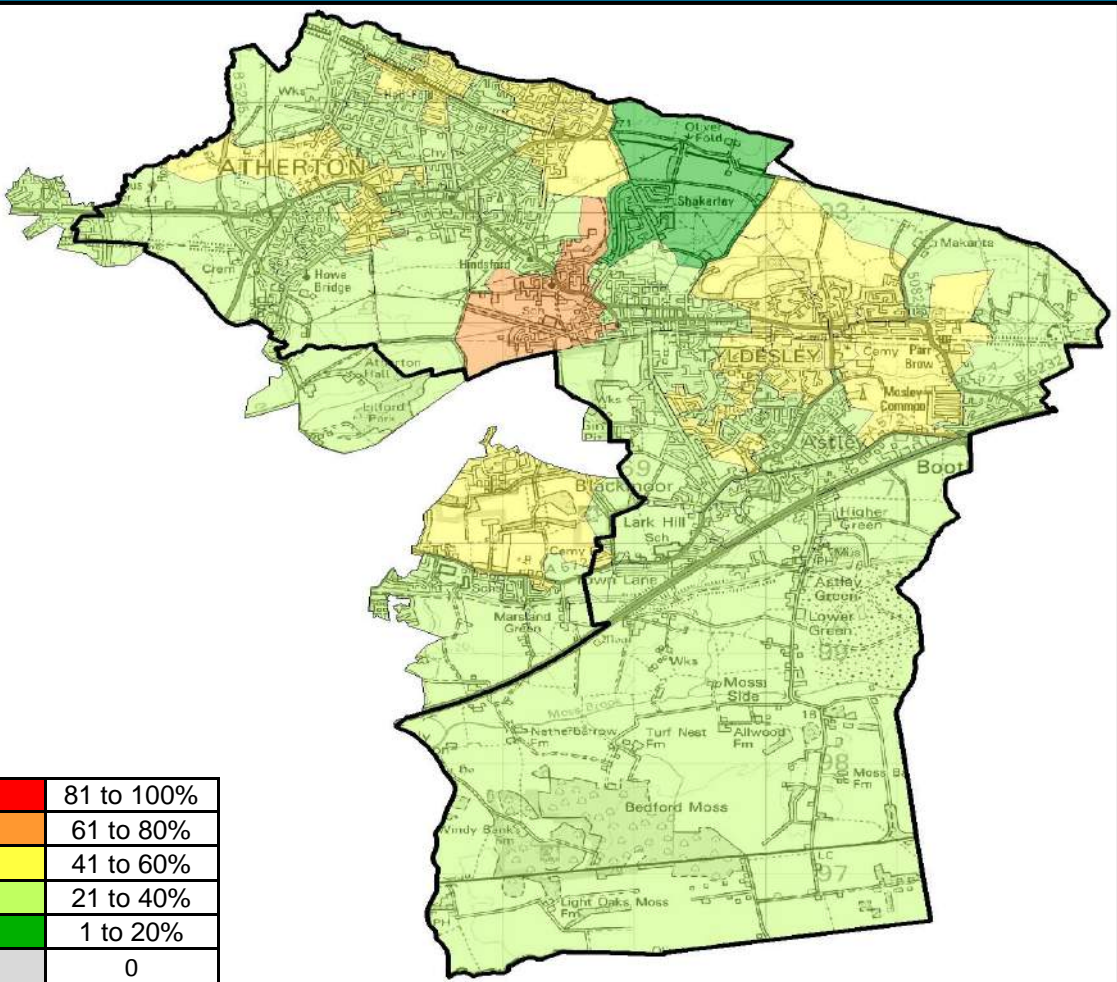
**Locality Rank: 4th**

**Highest Concentration:**

**Atherton Centre**



# Child Obesity (Year 6)



## Overview

Locality 5 has the highest rate of overweight and obese children in Year 6. However, Locality 5 has the second lowest rate of obese children, a more severe overweight category. Hindsford South has the highest concentration of child obesity in year 6.

Wigan Council is in the second quartile for performance for rates of child obesity in year 6 when compared with national averages

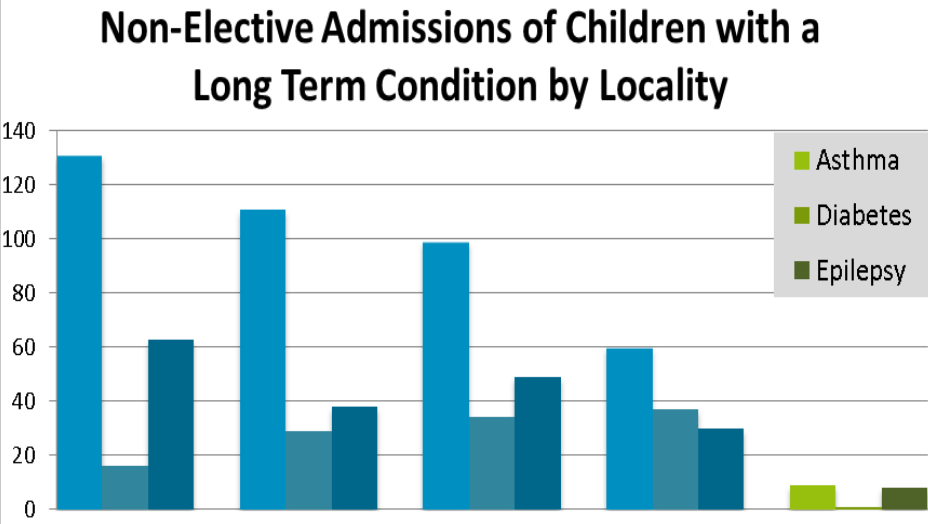
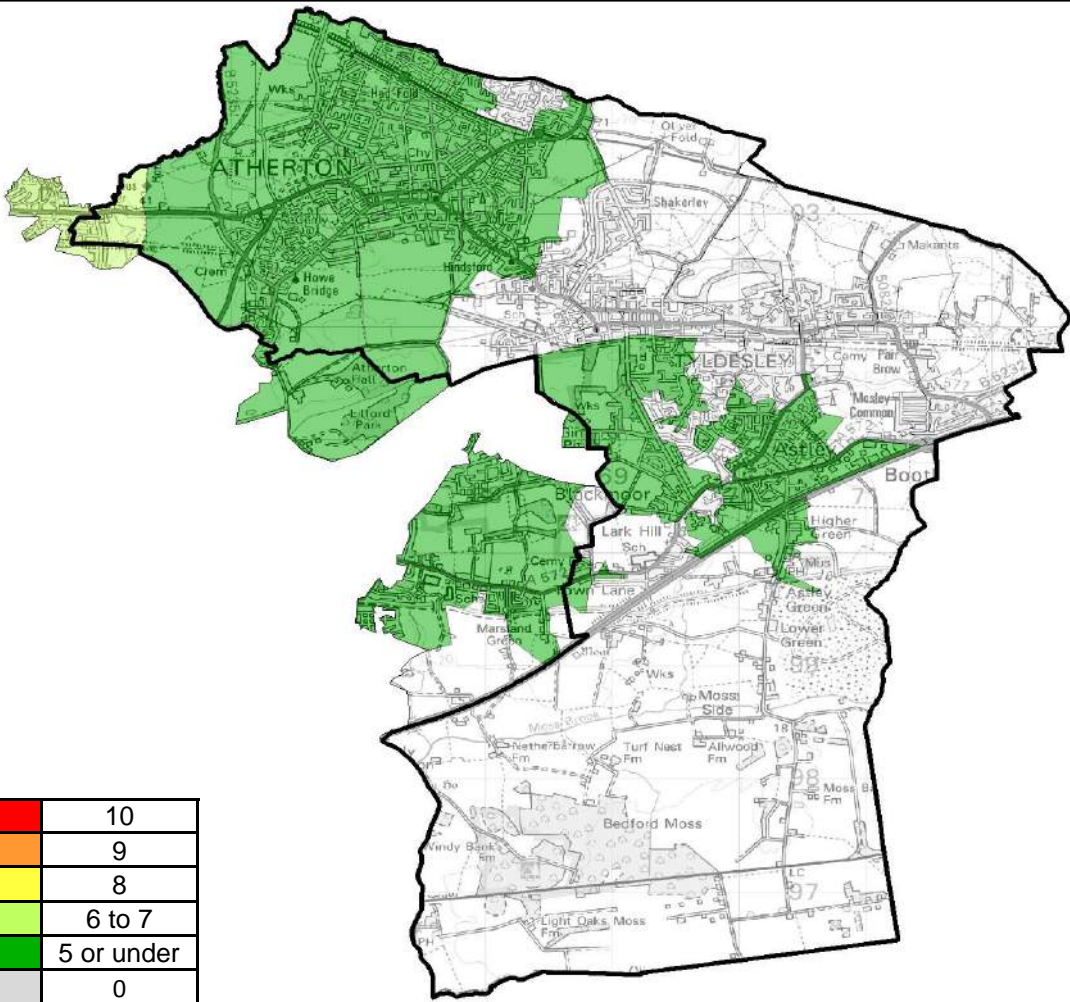
4th	3rd	2nd	1st
-----	-----	-----	-----

## Locality Rank: 1st

## Highest Concentration:

## Hindsford South

# Non-Elective Admissions of Children with a Long-term Condition



## Overview

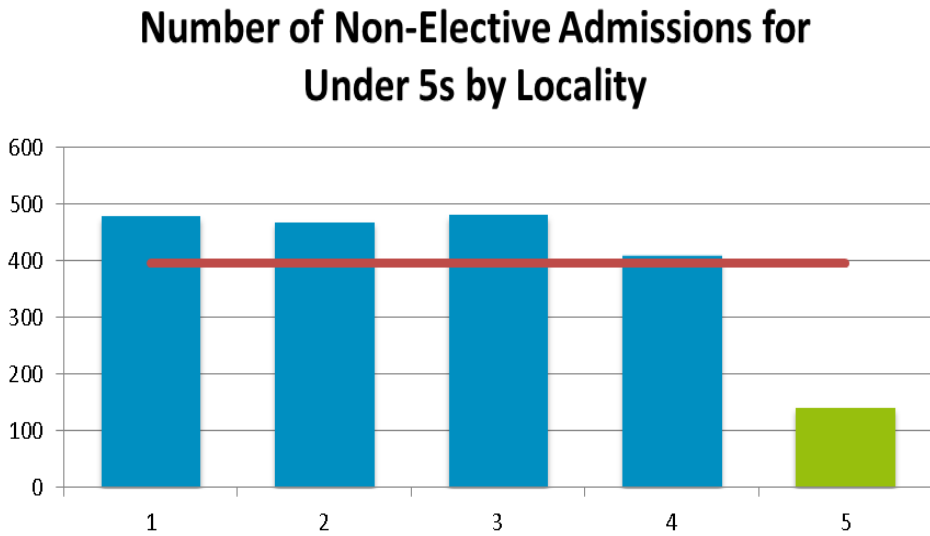
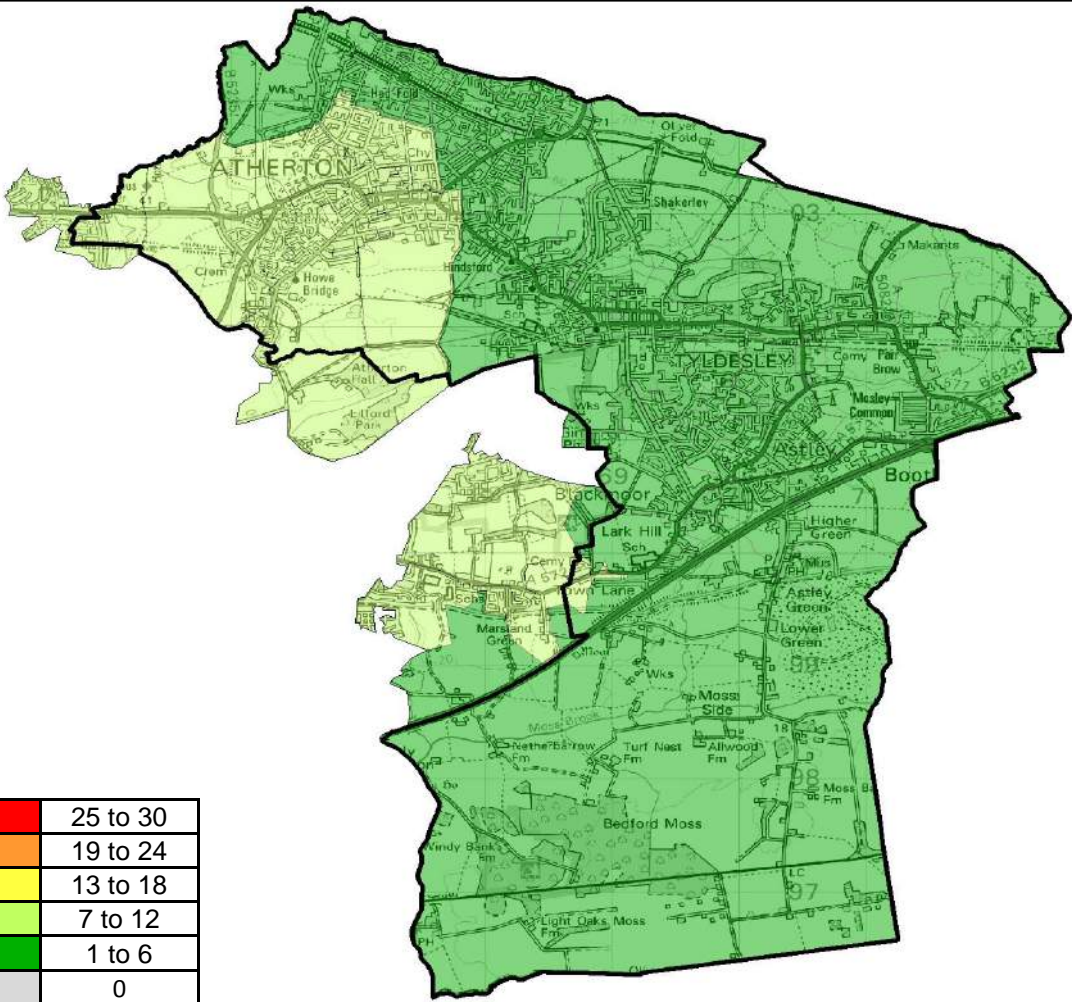
Locality 5 has the lowest number of identified Non-Elective Admissions of Children with a Long Term condition of all Wigan Council’s localities with 18.

Dangerous Corner has the highest concentration of Non-Elective Admissions of Children with a Long Term condition within locality 5.

The average number of identified Non-Elective Admissions of Children with a Long Term condition of all Wigan Council’s localities was 143 admissions.

**Locality Rank: 5th**  
**Highest Concentration: Dangerous Corner**

# Non-elective Admissions for Under 5s



## Overview

Locality 5 had the lowest number of non-elective admissions for under 5s between April 13 and February 14 of all Wigan Council’s localities with 141 admissions.

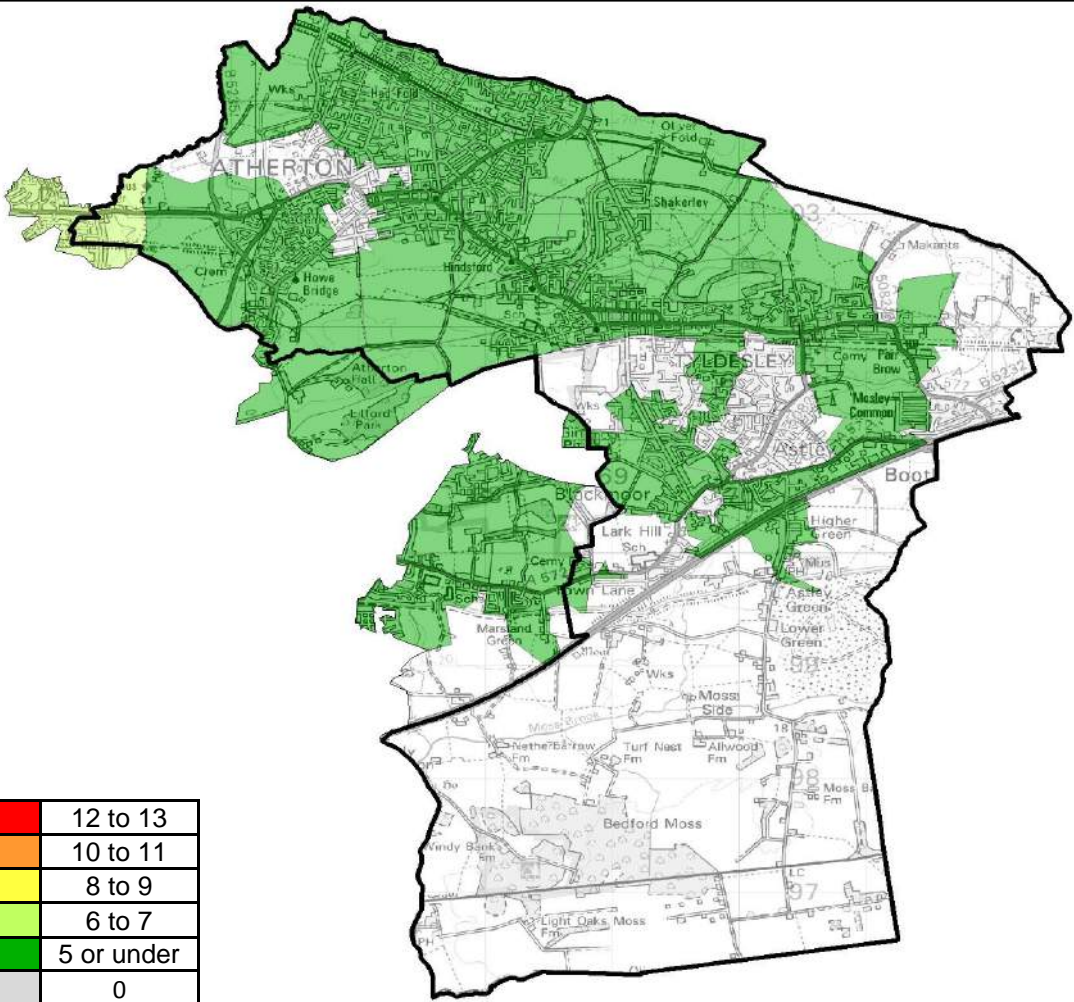
The areas with the highest number of admissions are closer to Wigan Hospital. Areas further away from the centre may visit other hospitals.

The average number of admissions across all of the Borough’s Localities is 396.

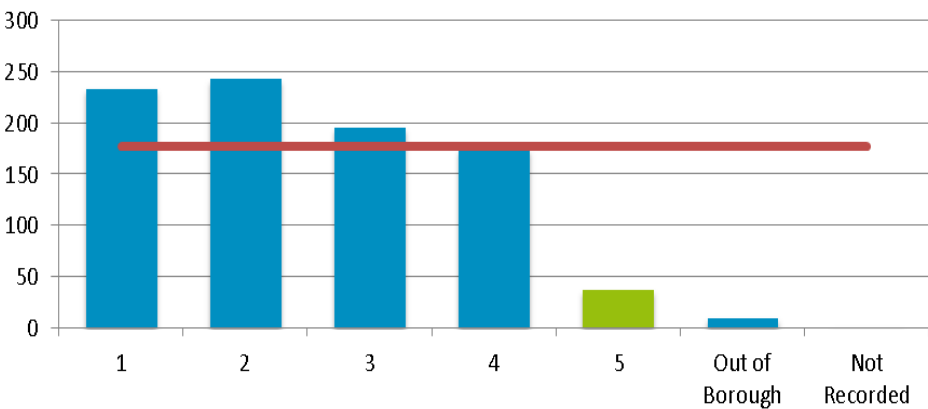
**Locality Rank: 5th**  
**Highest Concentration: Dangerous Corner**



# Non-elective Activity for Intentional and Unintentional Injuries



Total of Non-Elective Activity Intentional and Unintentional Injuries by Locality



## Overview

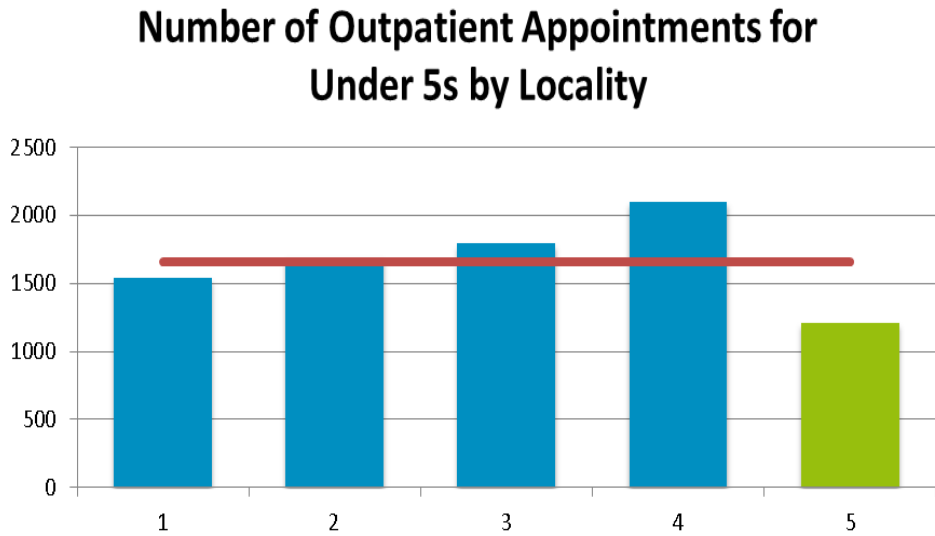
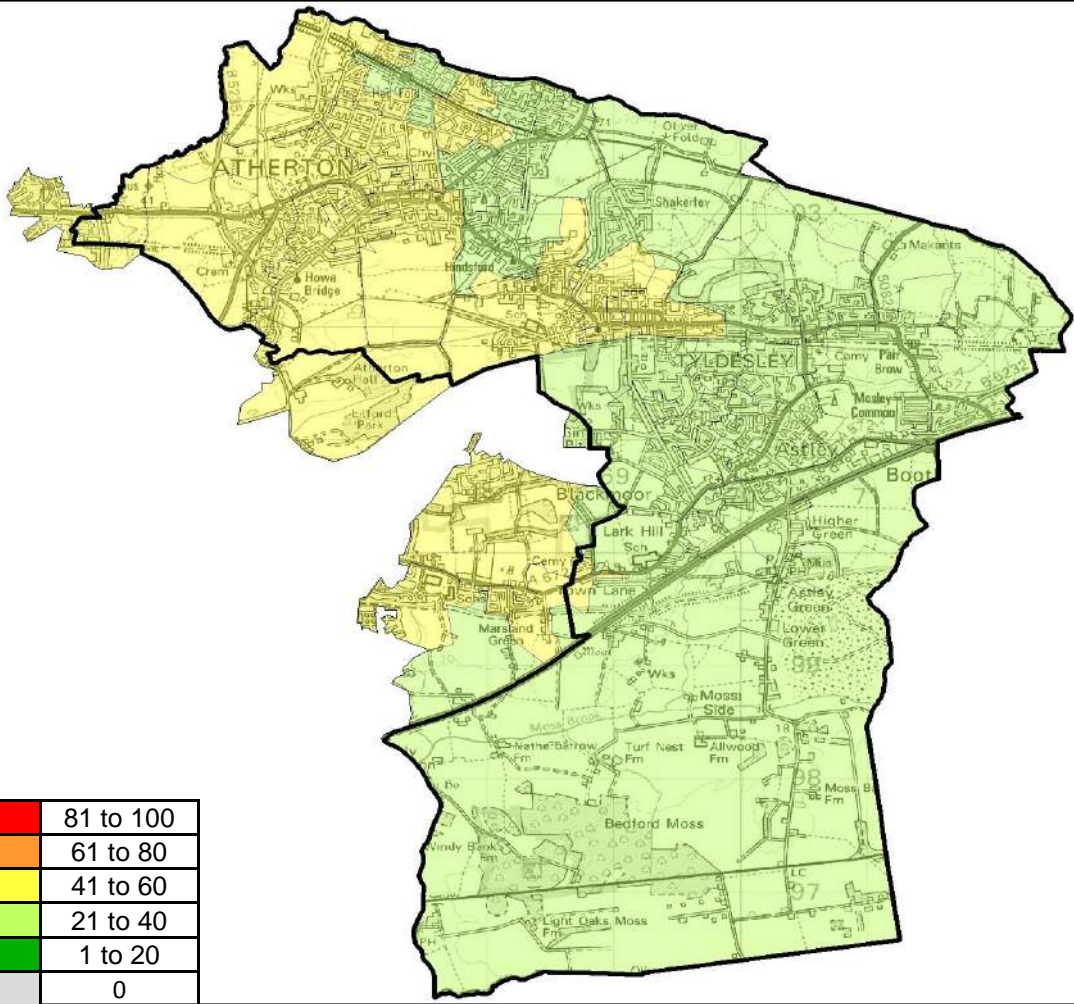
Locality 5 has the lowest number of Non-Elective activity intentional and unintentional injuries with 37 injuries. The highest concentration is Dangerous Corner with 6 injuries .

The average number of Non-Elective activity intentional and unintentional injuries across all localities is 177.

Locality Rank: 5th

Highest Concentration: Dangerous Corner

# Outpatient Appointments for Under 5s



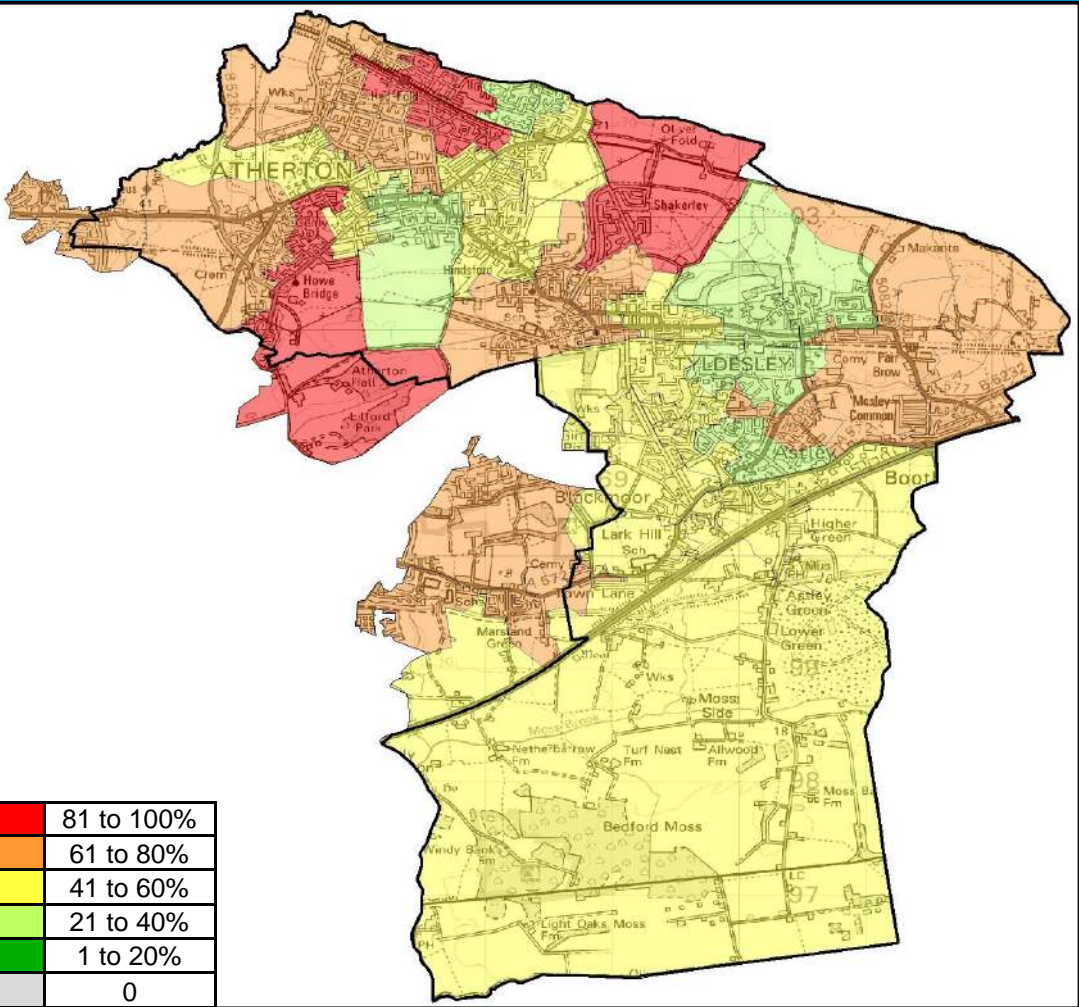
## Overview

Locality 5 has the lowest number of Outpatient Appointments for Under 5s with 1536 children identified. The highest concentration of Outpatient Appointments for Under 5s is Howe Bridge with 59.

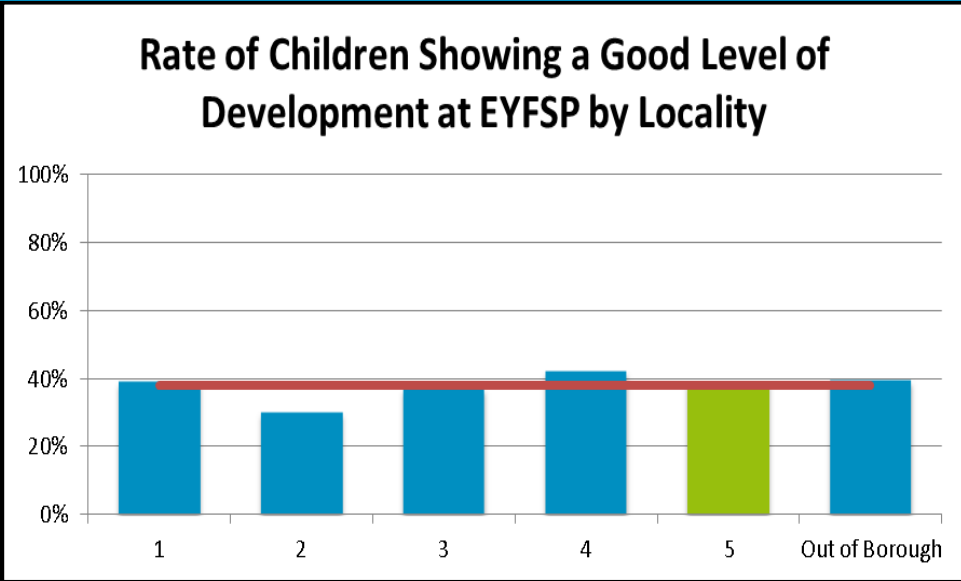
The average number of Outpatient Appointments for Under 5s across all localities is 1662.

**Locality Rank: 5th**  
**Highest Concentration: Howe Bridge**

# EYFSP—Children Showing a Good Level of Development



**Locality Rank: 2nd**  
**Lowest Concentration: Shakerley**



## Overview

Locality 5 has the second highest rate of children showing a good level of development at EYFSP by locality with 39% comparable to the borough average of 38%. Shakerley has the lowest concentration of children showing a good level of development at EYFSP within locality 5.

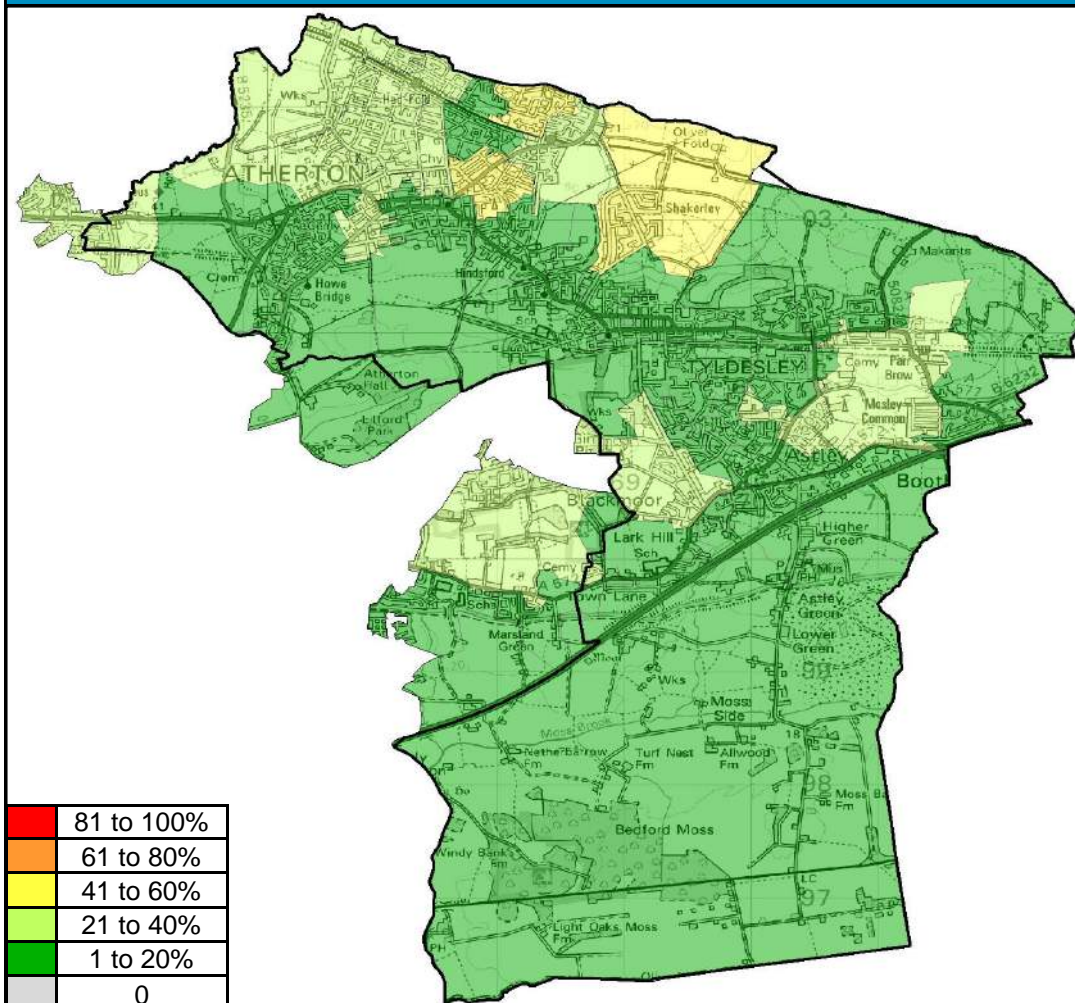
Hag Fold North, Howe Bridge and Hag Fold East are also areas for concern with less than 20% of children showing a good level of development in Early Years.

Wigan Council is in the bottom quartile for performance for rates of Children showing a good level of development when compared with statistical neighbours

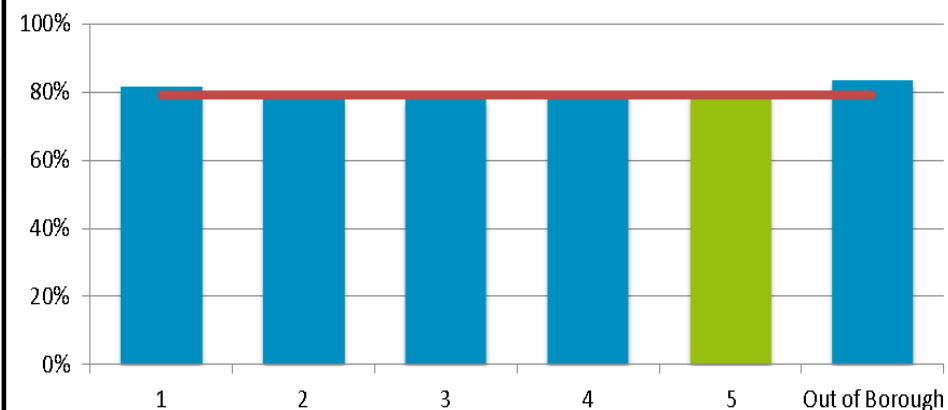
4th	3rd	2nd	1st
-----	-----	-----	-----



## Attainment at Key Stage 2



### Rate of Children Achieving Level 4 Reading, Writing and Maths at KS2 by Locality



### Overview

Locality 5 has the third highest rate of children achieving level 4 in Reading, Writing and Mathematics at key stage 2 with 79%. The lowest concentration within locality 1 is Shakerley.

The average across all localities is 79%.

Wigan Council is in the top quartile for performance for attainment at KS2 when compared with statistical neighbours

4th

3rd

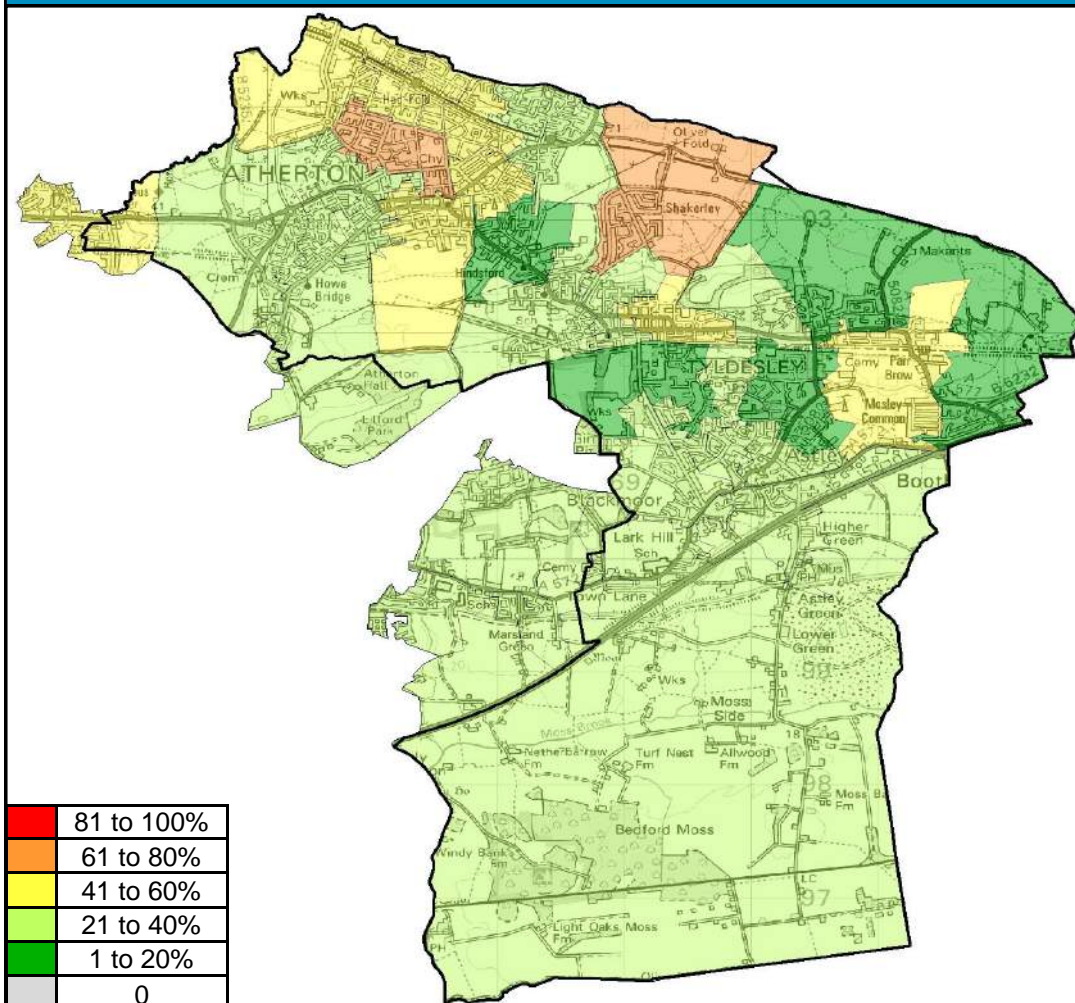
2nd

1st

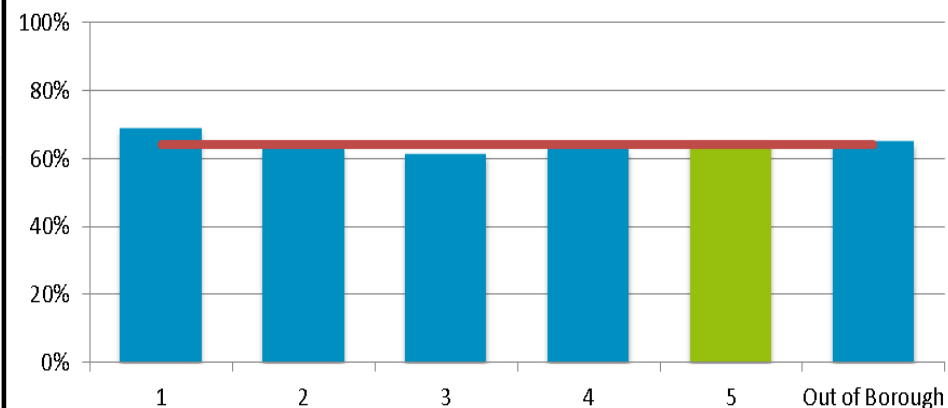
**Locality Rank: 3rd**

**Lowest Concentration: Shakerley**

## Attainment at Key Stage 4



### Rate of Children Achieving 5 A\*-C GCSEs at KS4 by Locality



### Overview

Locality 5 has the second lowest rate of children achieving 5A\*-C GCSEs at KS4 by locality with 65%. The lowest concentration within locality 5 is Shakerley with 32%.

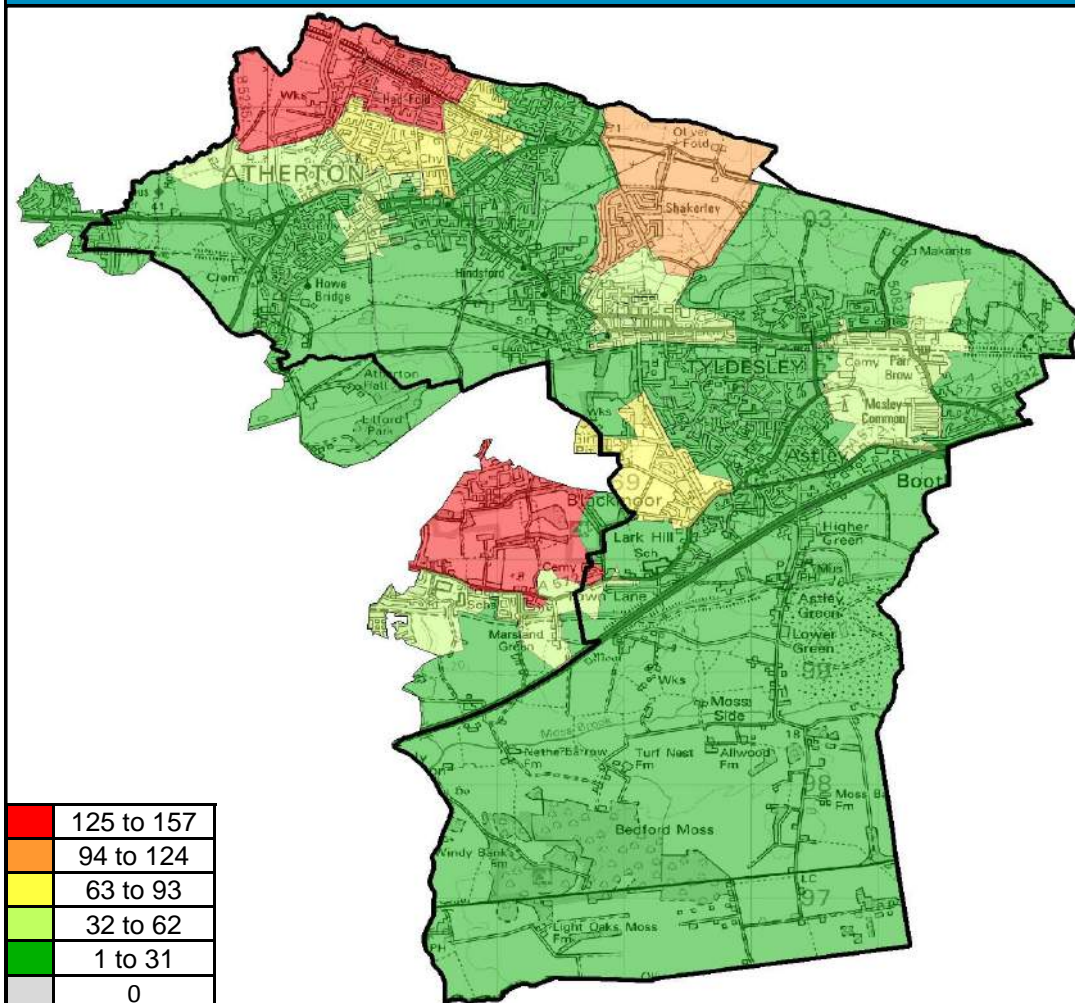
The average across all localities is 64%.

Wigan Council is in the first quartile for rates of attainment at KS4 when compared with statistical neighbours.

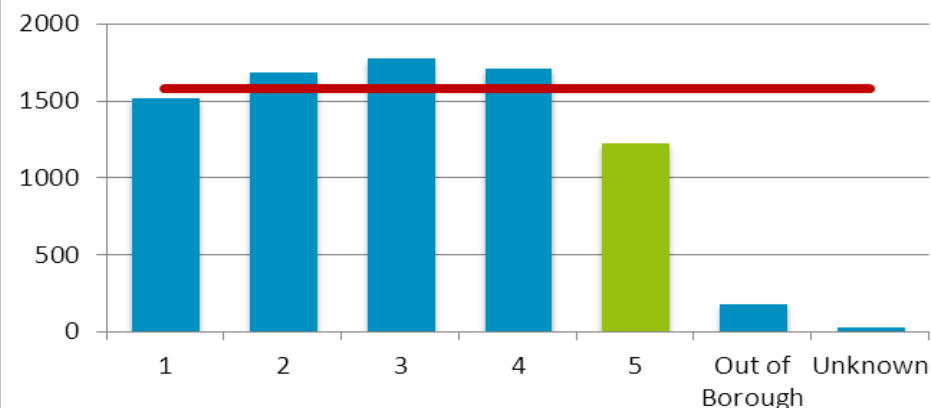
**Locality Rank: 4th**  
**Lowest Concentration: Shakerley**

4th	3rd	2nd	1st
-----	-----	-----	-----

## Eligibility for Free School Meals



### Number of Children Eligible for Free School Meals by Locality



### Overview

Locality 5 has the lowest number of children that are eligible for free school meals with 1222 eligible as at January 2014.

Hag Fold West has the highest concentration of eligible children with 152 children eligible for free school meals.

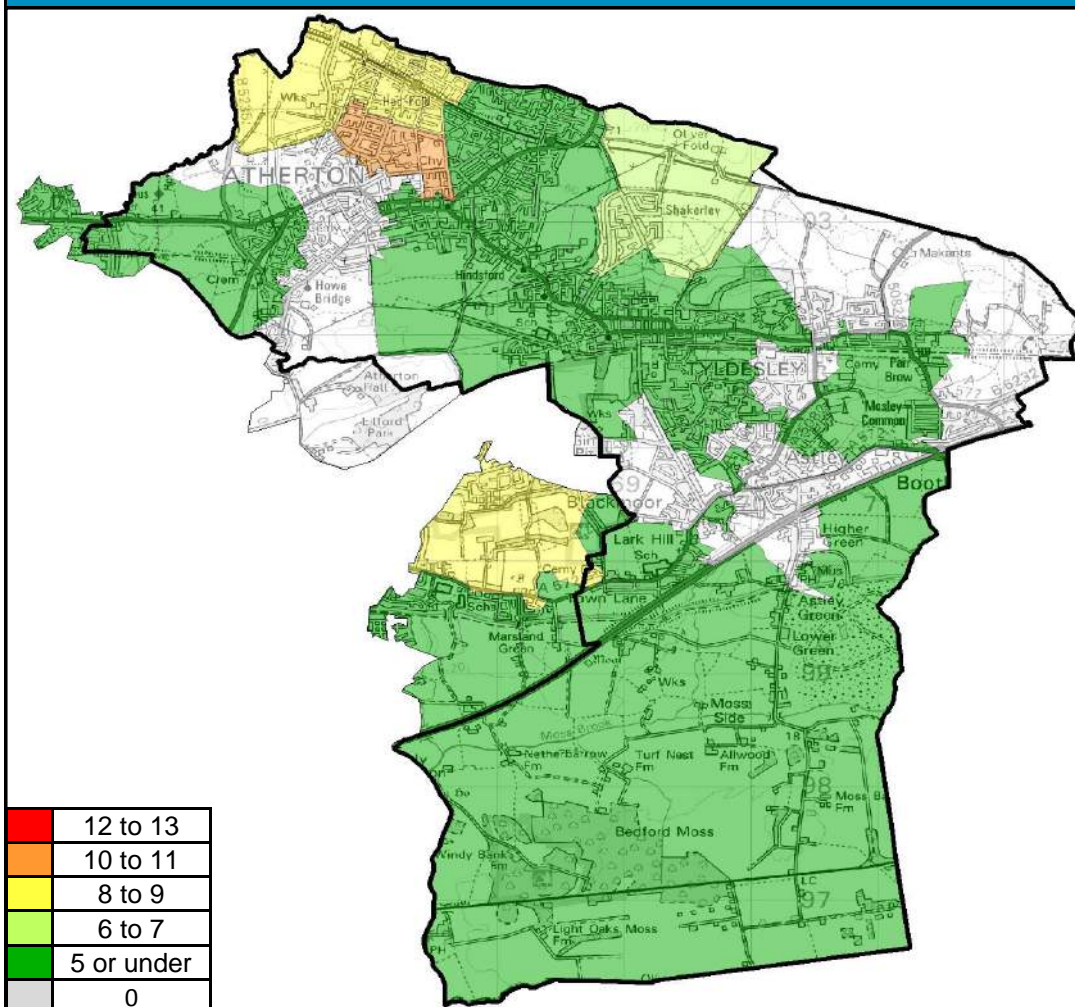
The Locality average is 1579 eligible children.

**Locality Rank: 5th**

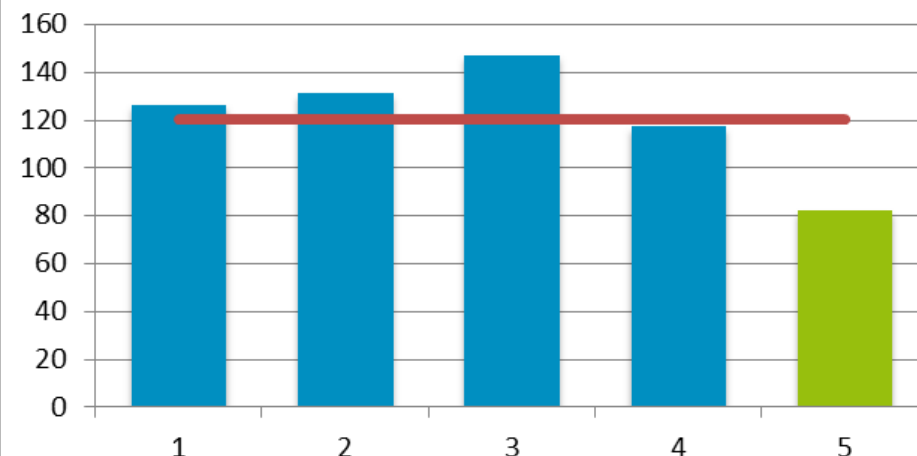
**Highest Concentration: Hag Fold West**



## NEET (16-18)



### Number of NEET 16-18 by Locality



### Overview

Locality 5 has the lowest number of identified NEET 16-18 year olds of all Wigan Council's localities with 82 identified.

Hag Fold South has the highest number of NEET in the borough with 11.

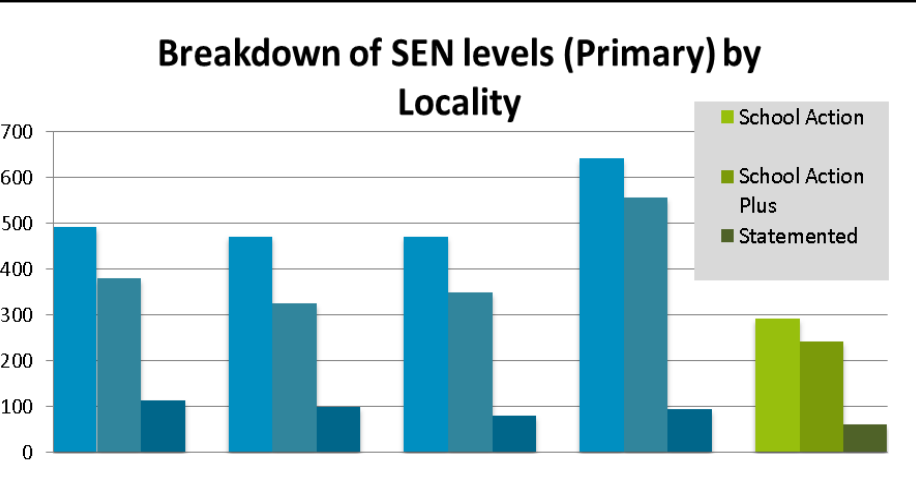
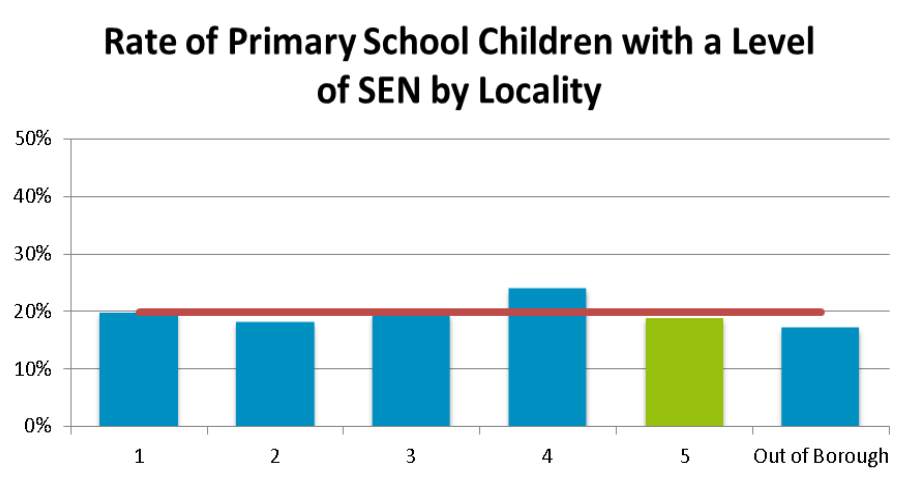
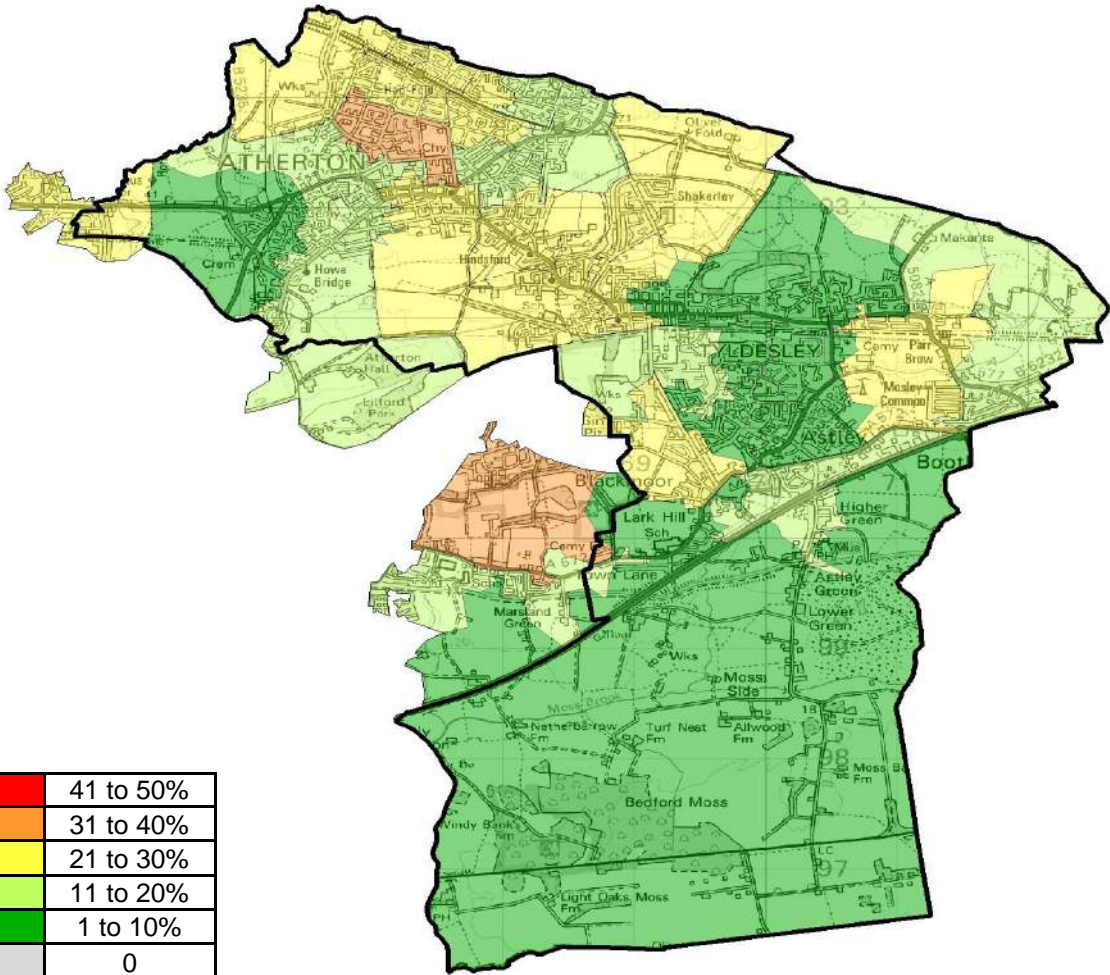
The average across the borough is 121.

Wigan Council is in the second quartile for rates of NEET (16-18) when compared with statistical neighbours.

**Locality Rank: 5th**  
**Highest Concentration: Hag Fold South**

4th	3rd	2nd	1st
-----	-----	-----	-----

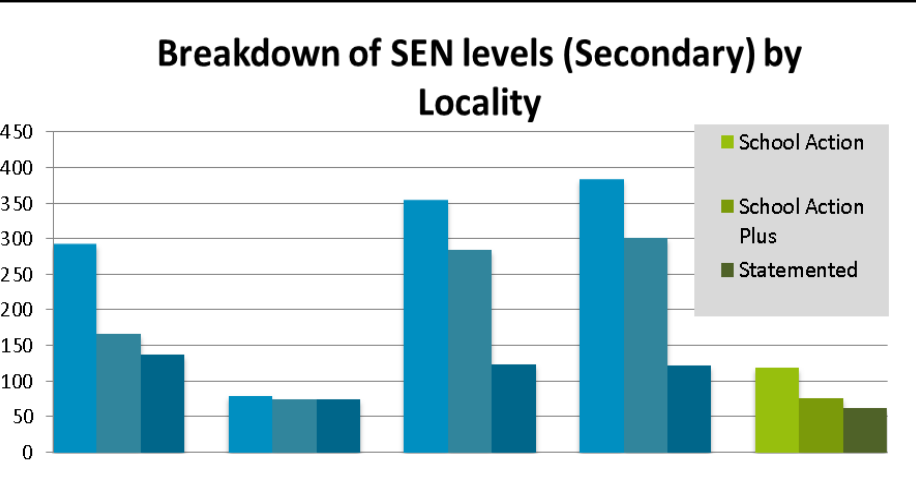
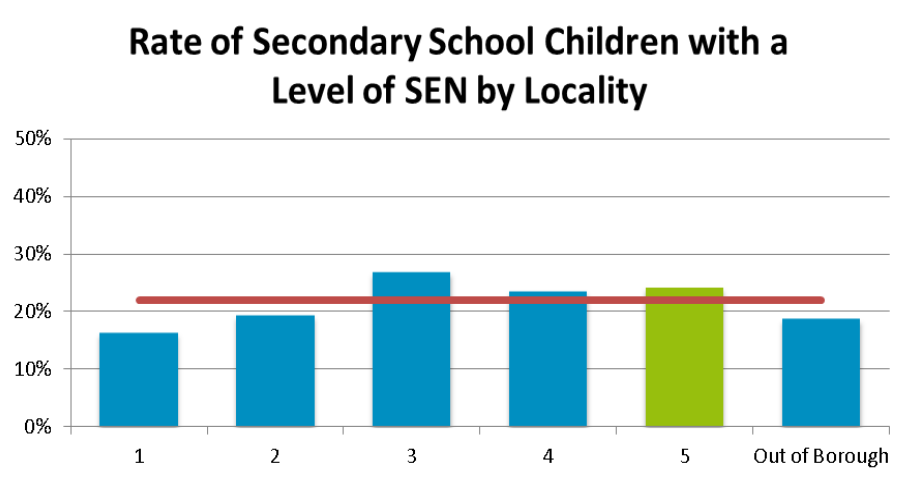
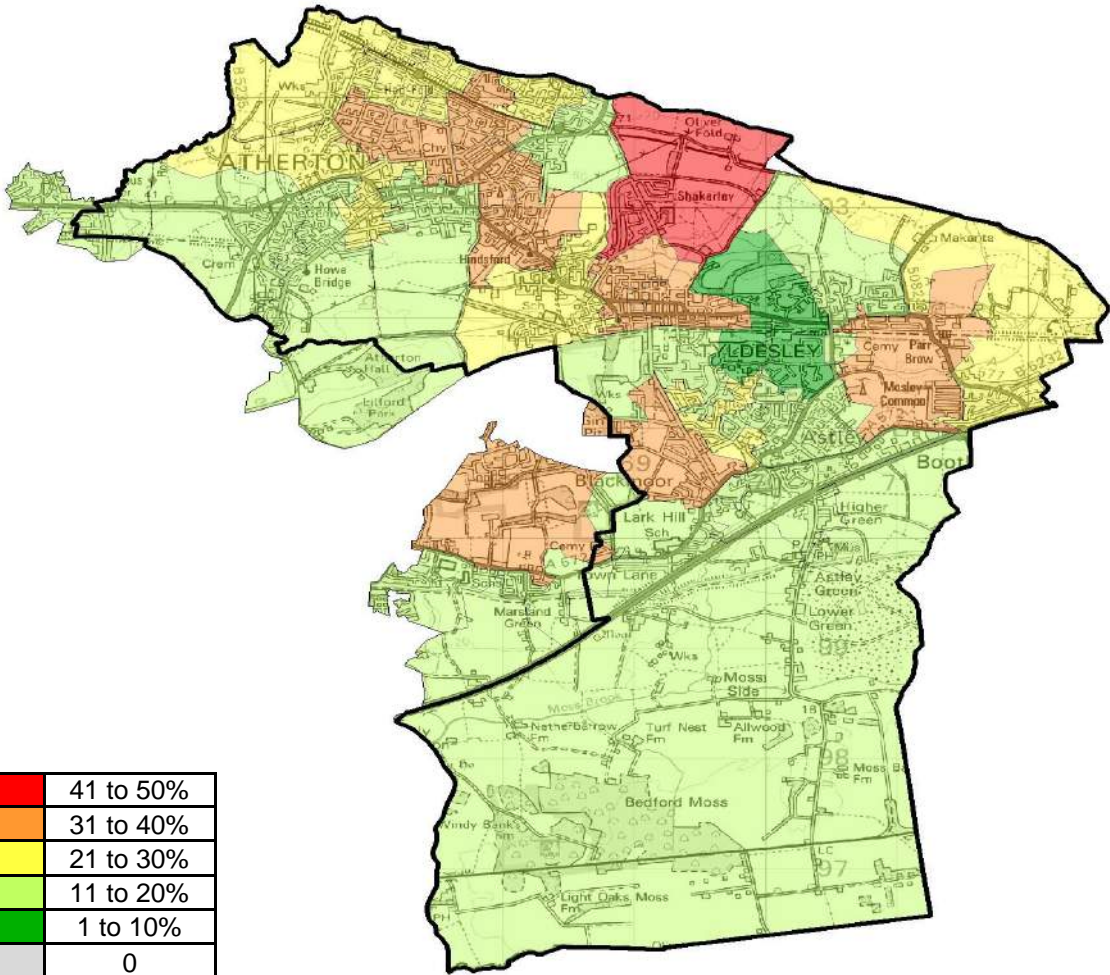
# Children with a Level of SEN (Primary)



**Overview** Locality 5 has the second lowest overall rate of children with a level of SEN within all of the localities with a rate of 19%. Higher Folds South has the highest concentration of children with a level of SEN in Locality 5 with over 38%. The borough average is 20% per locality.

**Locality Rank: 4th**  
**Highest Concentration:**  
**Higher Folds South**

# Children with a Level of SEN (Secondary)



**Overview** Locality 5 has the second highest overall rate of secondary school children with a level of SEN of all localities with a rate of 24%. Shakerley has the highest concentration of children with a level of SEN within the locality with a rate of just over 41%.

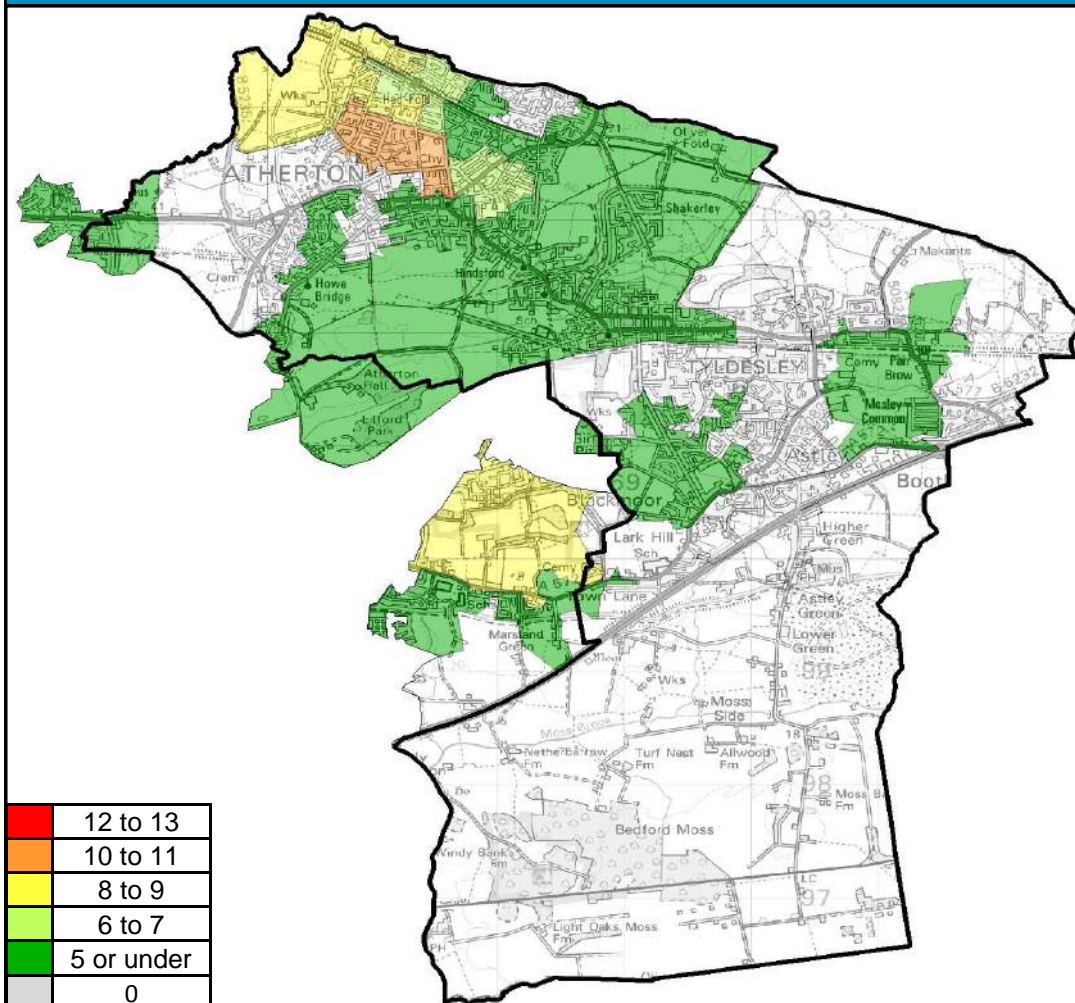
The borough average rate is 22% across all localities.

**Locality Rank: 2nd**

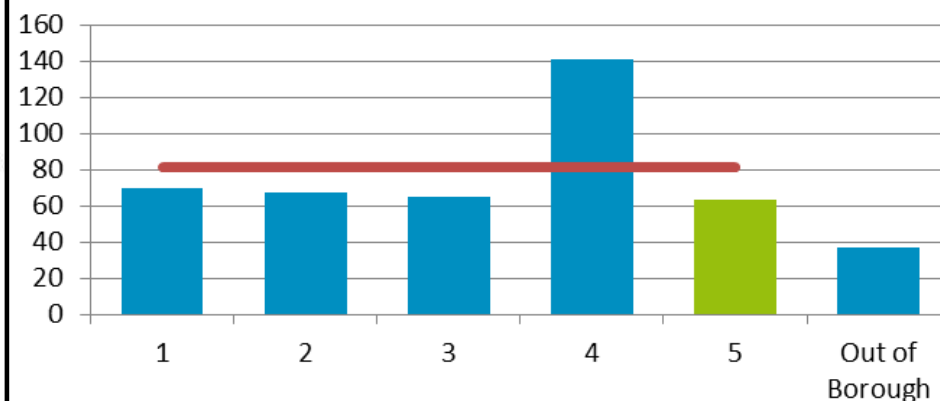
**Highest Concentration: Shakerley**



## Children with 15%+ Unauthorised Absence



### Number of Children with 15%+ Unauthorised Absence by Locality



### Overview

Locality 5 has the lowest number of children who have a high rate of unauthorised absence but figures are comparable amongst localities 1, 2, 3 and 5.

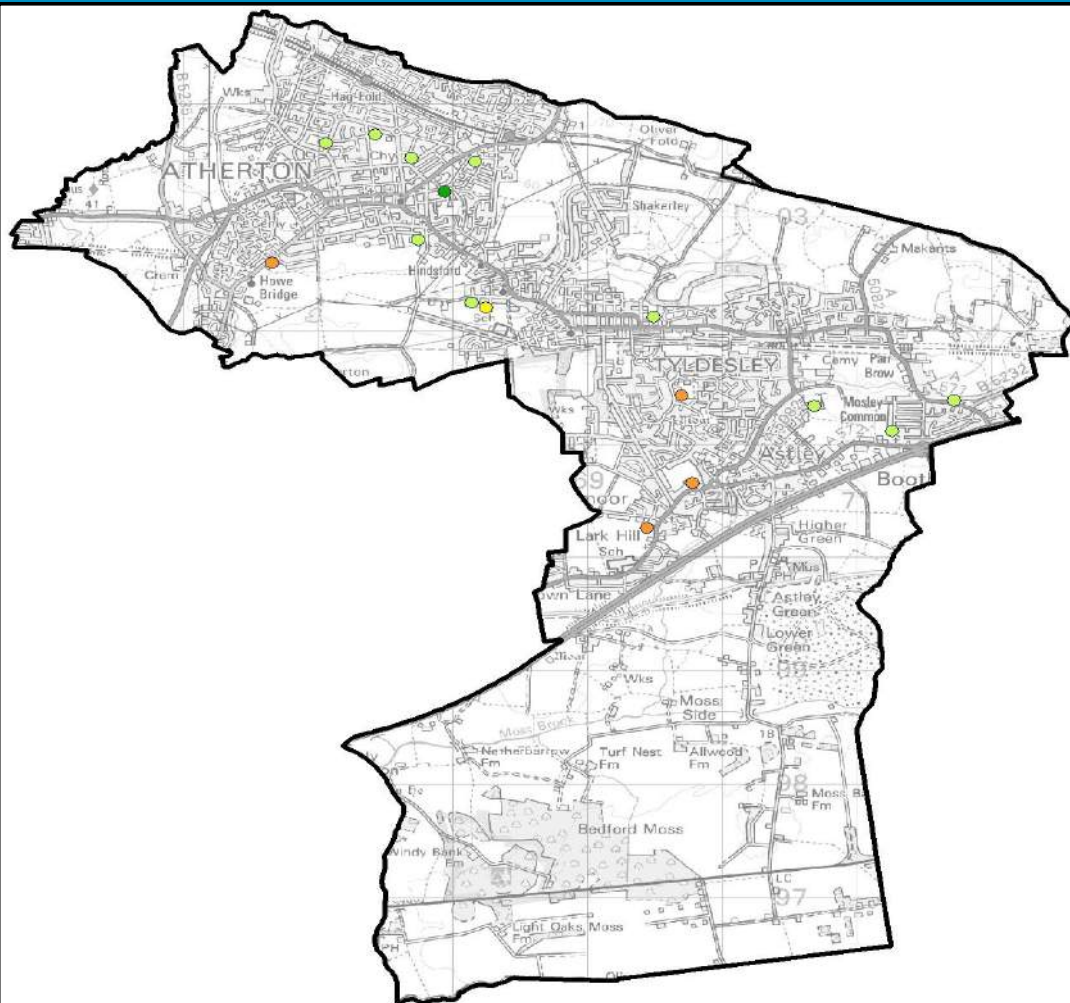
Hag Fold South has the highest concentration of children with 15%+ unauthorised absence.

The average number of children with 15%+ unauthorised absence is 81 across all localities.

**Locality Rank: 5th**

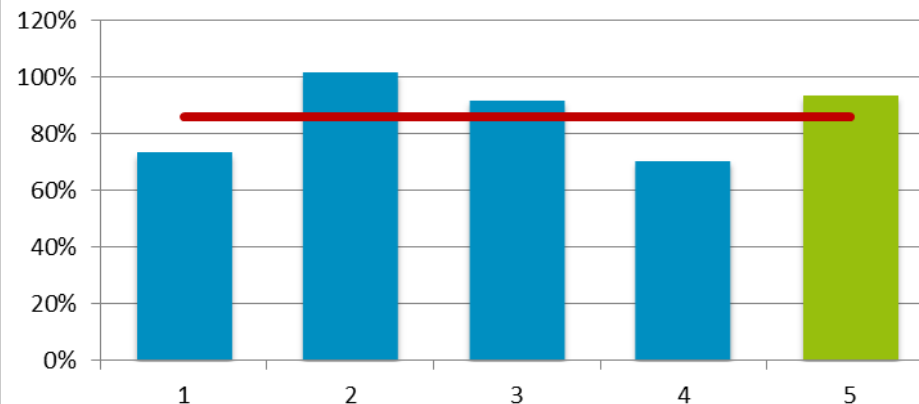
**Highest Concentration: Hag Fold South**

## Demand for School Places (Primary)



**Locality Rank: 4th**

### Number of 1st Preferences by Available Places in Localities



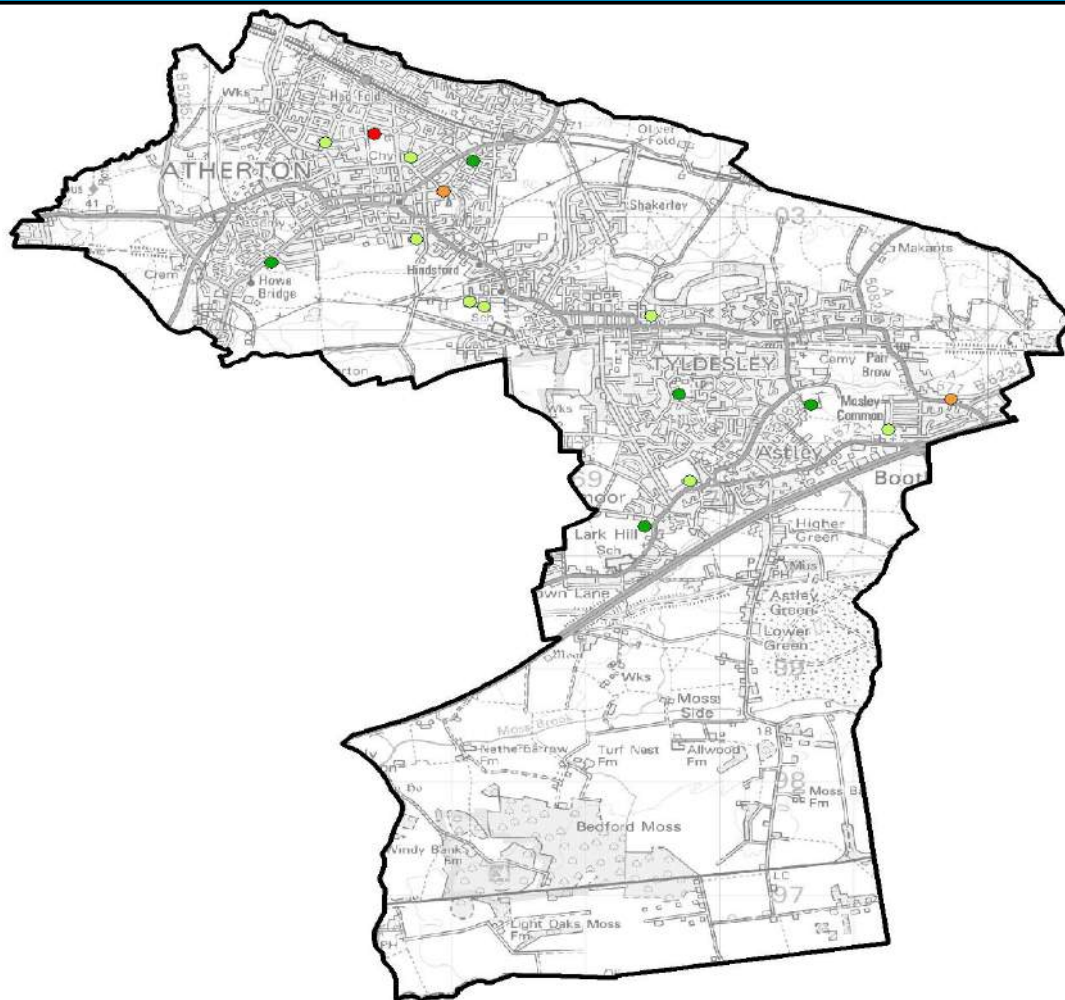
### Overview

Locality 5 has the second lowest rate of demand for primary school places of all Wigan borough's localities.

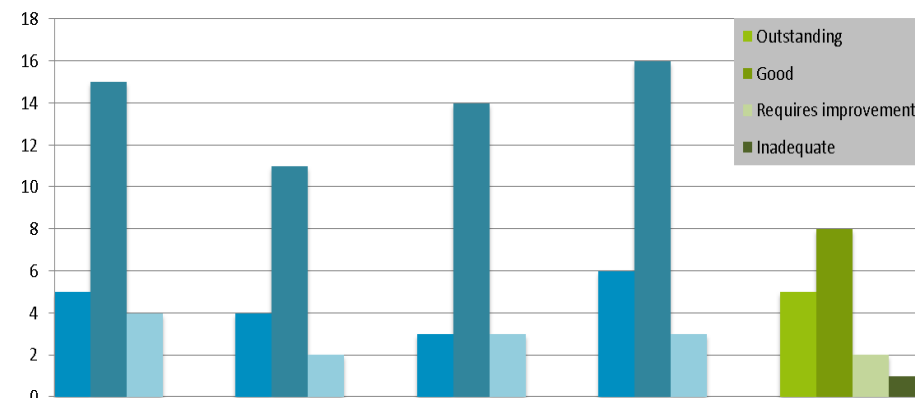
One school has under 50% first preferences compared to available places namely Chowbent Primary School.

Four schools have over 100% first preferences compared to available places. Tyldesley Primary School has the largest percentage with 137.8%.

## School Ofsted Ratings (Primary)



Breakdown of Primary School OFSTED Ratings by Locality



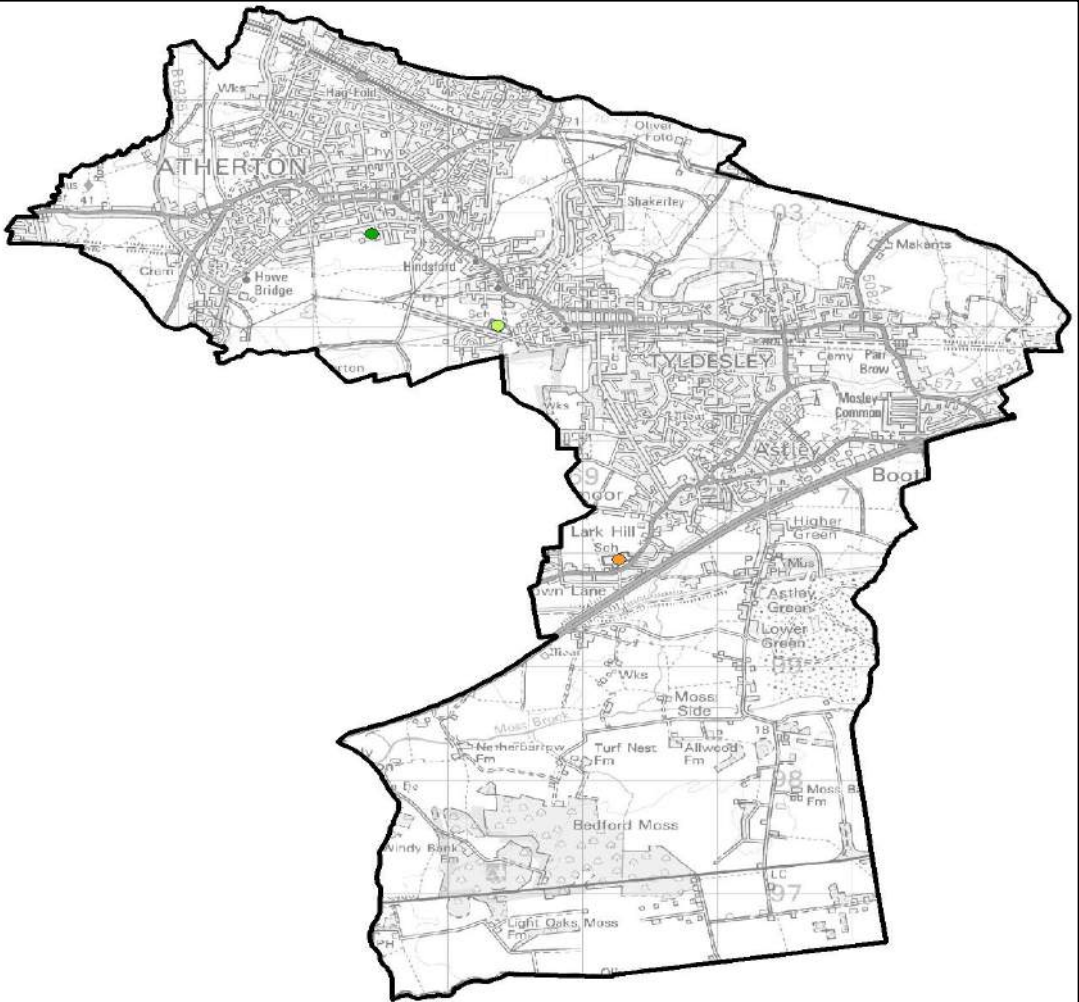
## Overview

Locality 5 has 81% of schools rated good or outstanding.

Of the 16 schools in the locality, 5 are rated as outstanding, 8 as good 2 requiring improvement and 1 as inadequate.

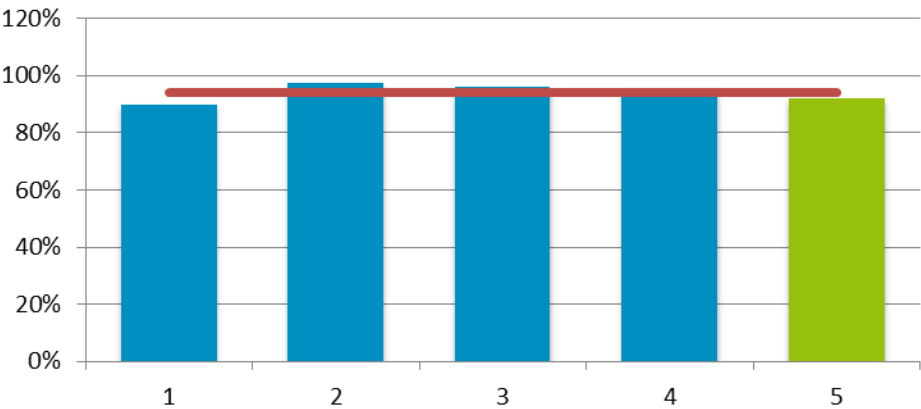


# Demand for School Places (Secondary)



Locality Rank: 2nd

Number of 1st Preferences by Available Places in Localities



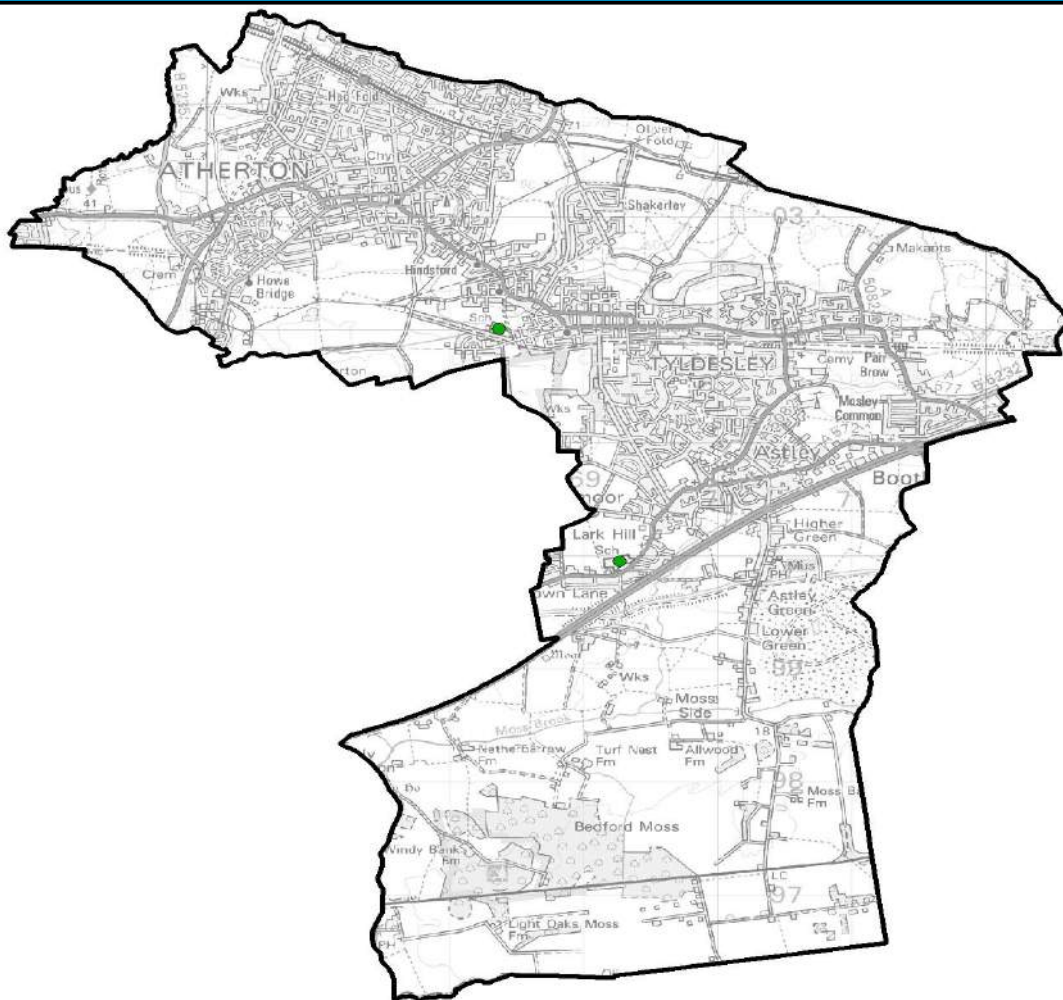
## Overview

Locality 5 has the second highest rate of demand for secondary school places of all Wigan borough’s localities.

Between Locality 5’s three secondary schools, there are 605 admission places available but only 565 children have one of the schools as their first choice, a rate of 93%.

St. Mary’s High School has the highest rate with 116.2% while Atherton Community School has the lowest with 44.4%.

## School Ofsted Ratings (Secondary)

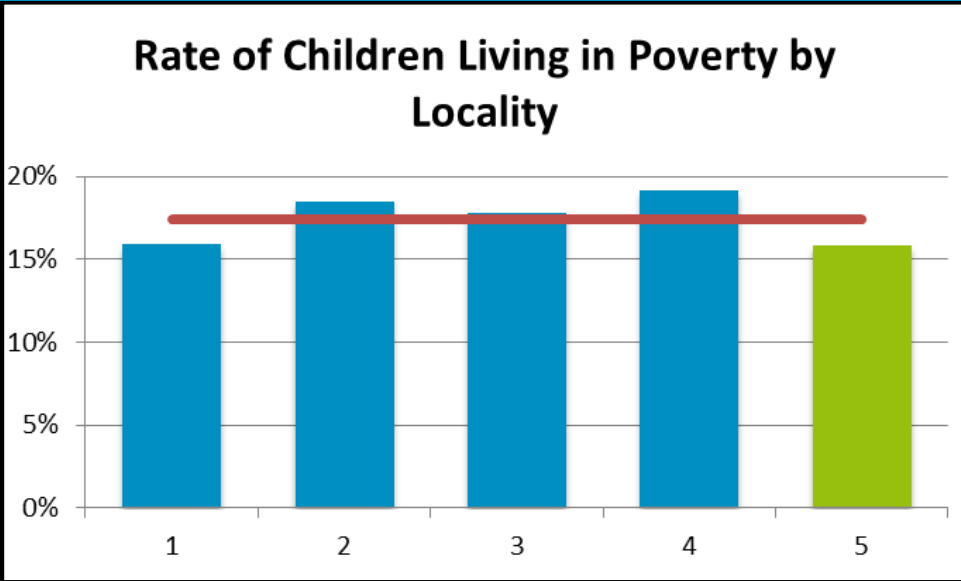
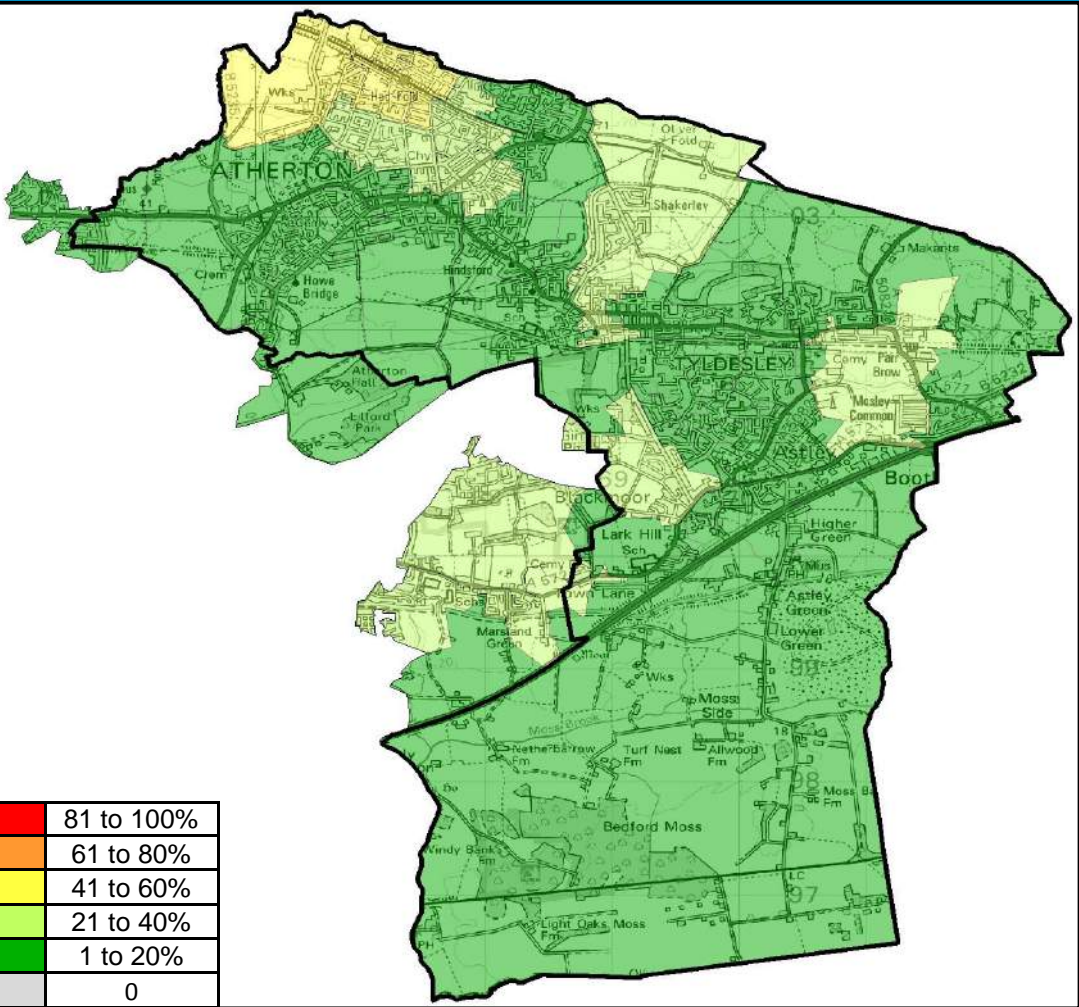


	Outstanding	Good	Requires Improvement	Inadequate	Total
Locality 1		4	1		5
Locality 2	2		1		3
Locality 3		3	1		4
Locality 4		3	1		4
Locality 5	2				2
Grand Total	4	10	4		18

### Overview

Locality 5 has 2 schools with OFSTED rating of Outstanding. These are: St Mary's Catholic High School and Fred Longworth High School.

# Children Living in Poverty



## Overview

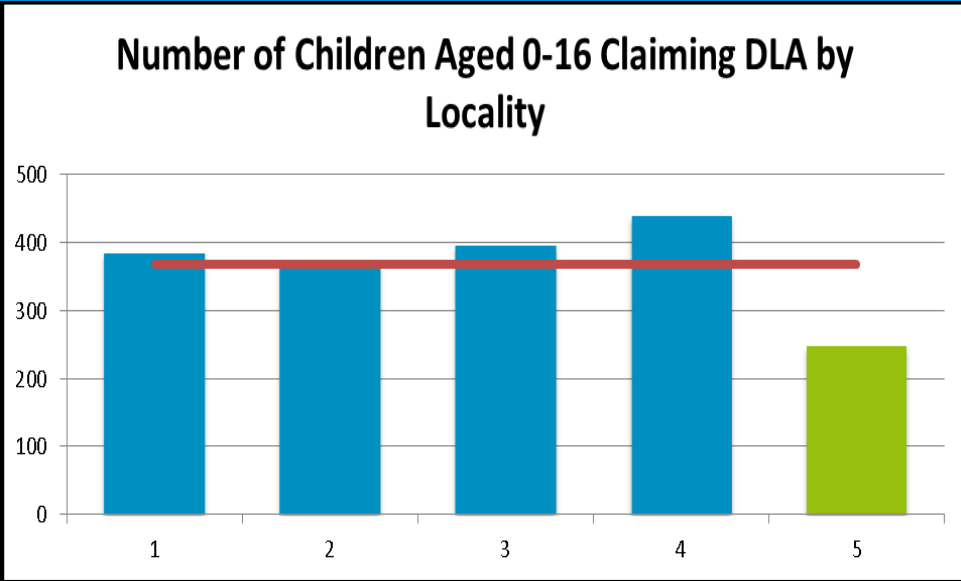
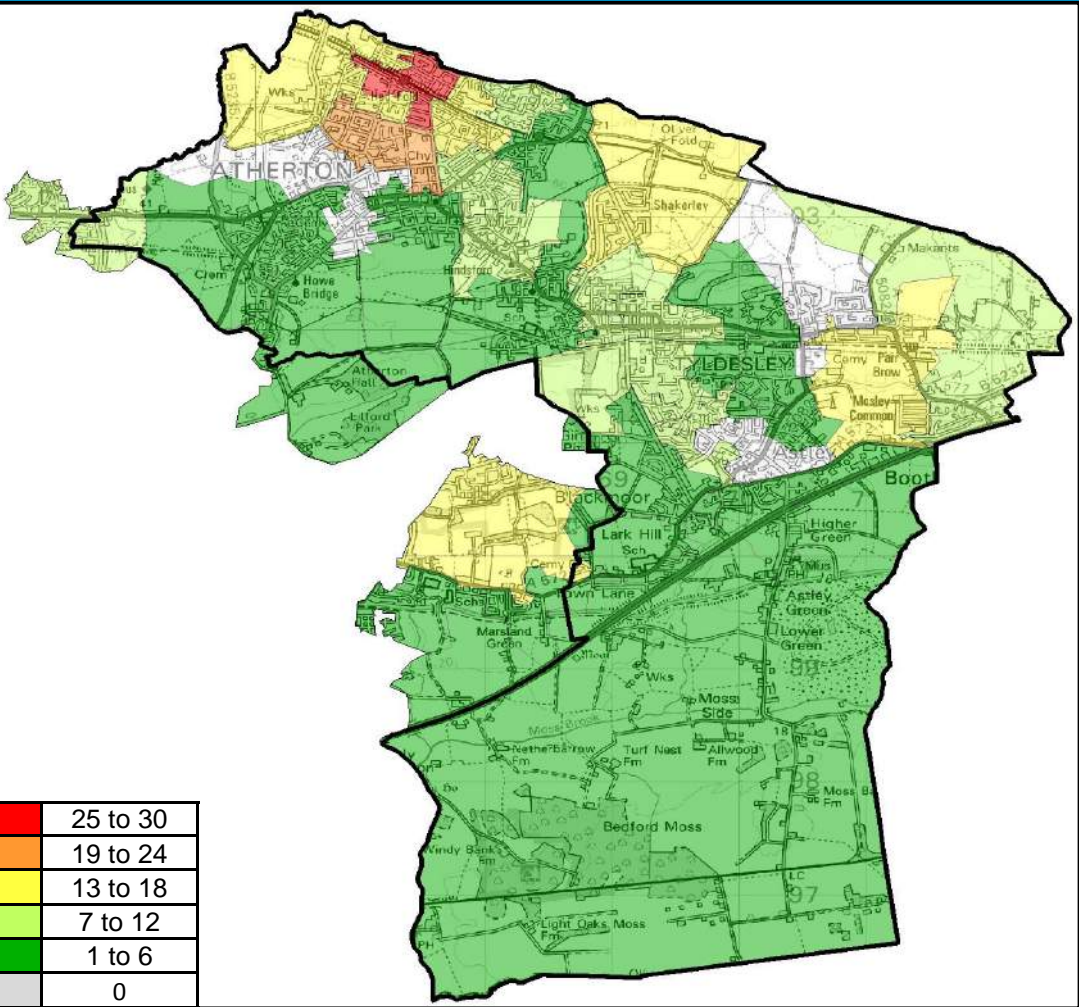
Locality 5 has the lowest rate of children living in poverty of the Borough's localities with 16%. The highest concentration within locality 5 is Hag Fold North with 47% followed by Hag Fold West and Shakerley with nearly 41% each.

The average across all localities is 17%.

**Locality Rank: 5th**  
**Highest Concentration: Hag Fold North**



# Children 0-16 Claiming DLA

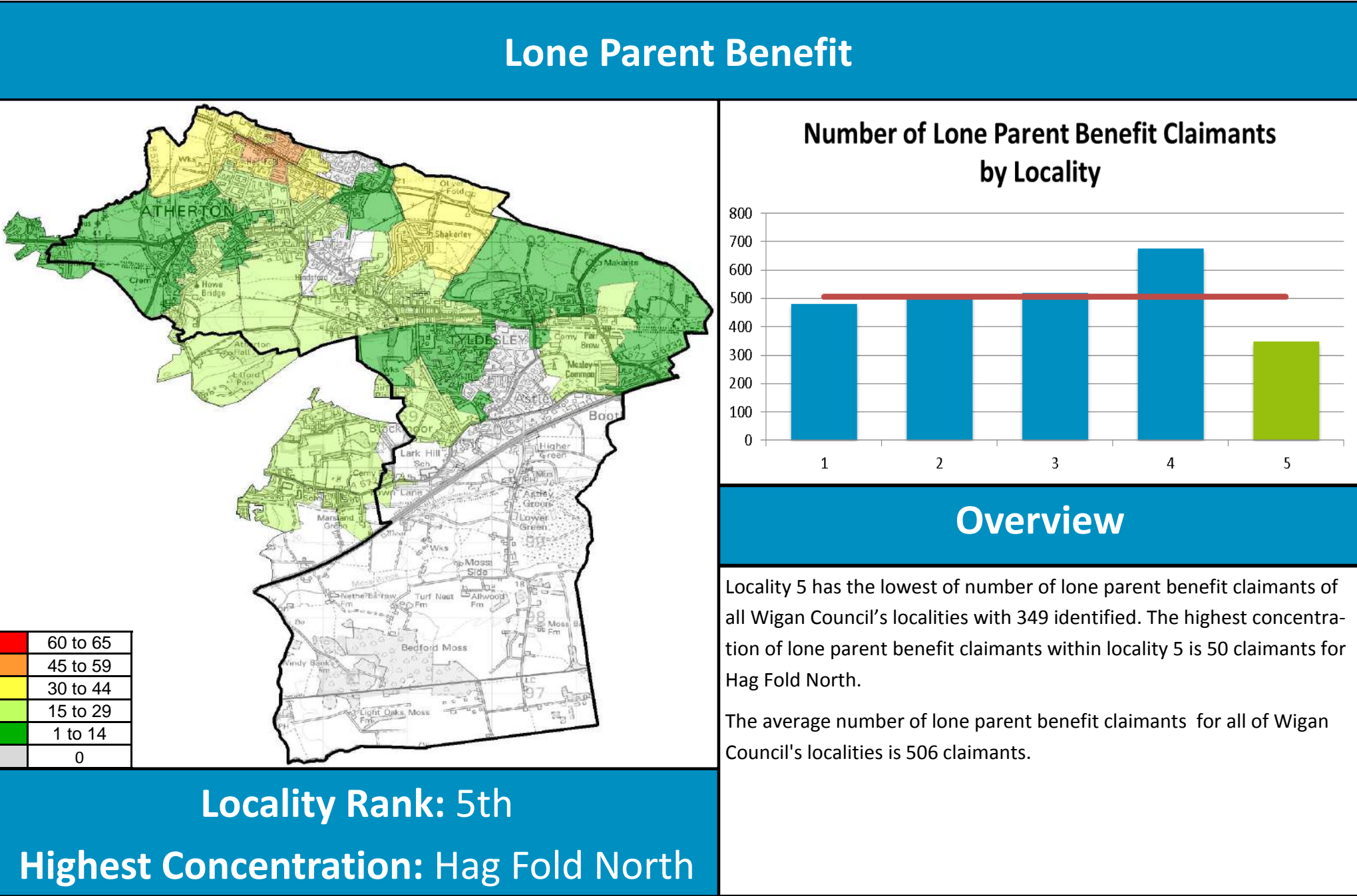


## Overview

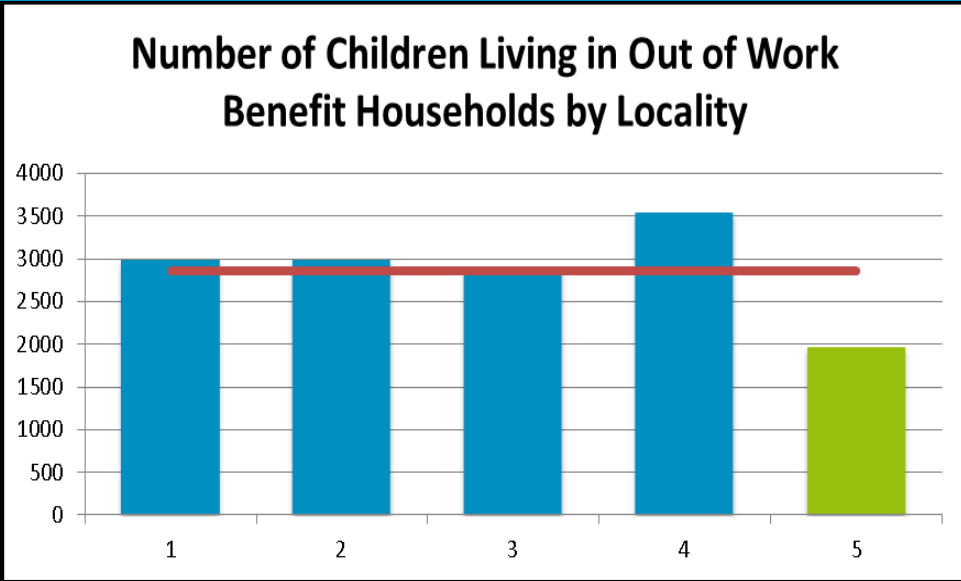
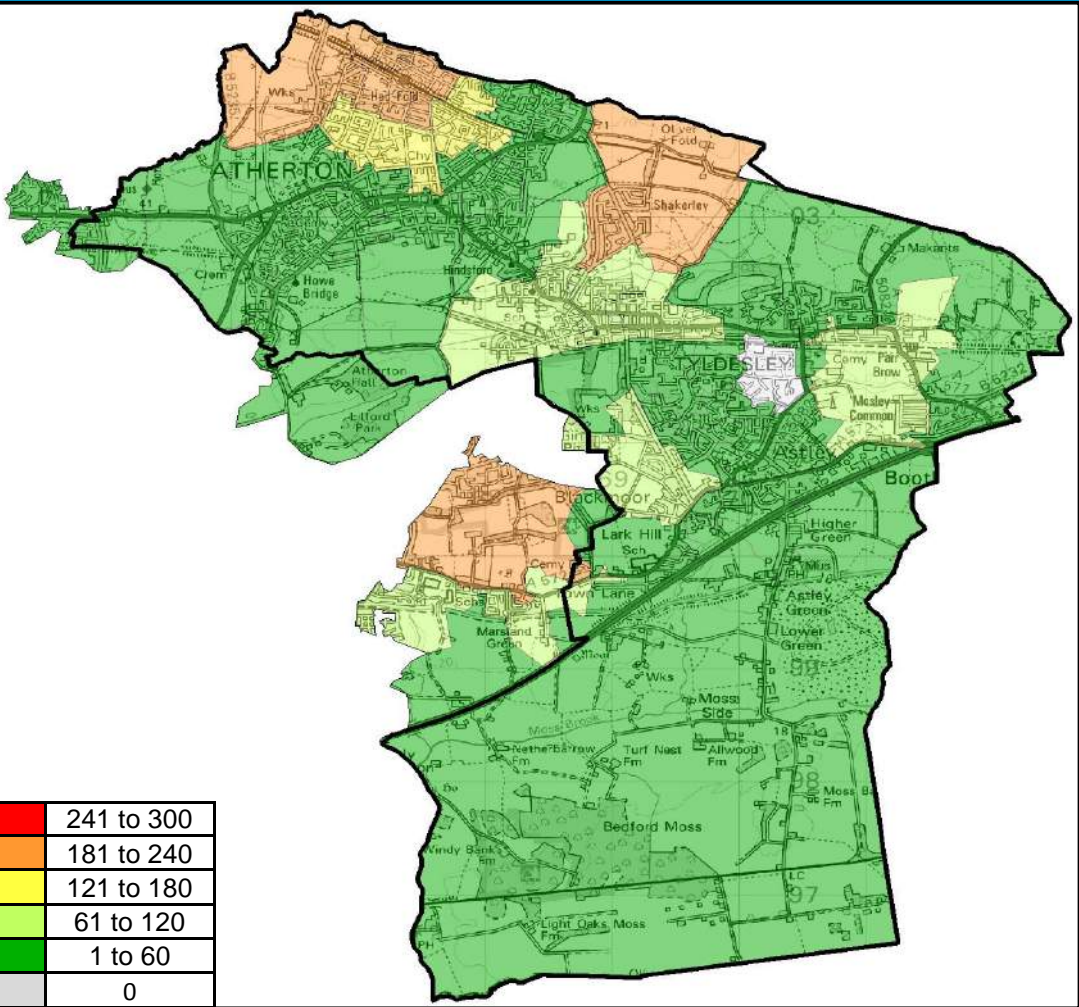
Locality 5 has the lowest number of Children Aged 0-16 Claiming DLA of all Wigan Council's localities with 249 identified. The highest concentrations of Children Aged 0-16 Claiming DLA are within the locality of Hag Fold North.

The average number of Children Aged 0-16 Claiming DLA of all Wigan Council's localities is 368.

**Locality Rank: 5th**  
**Highest Concentration: Hag Fold North**



# Children Living in Out of Work Benefit Households



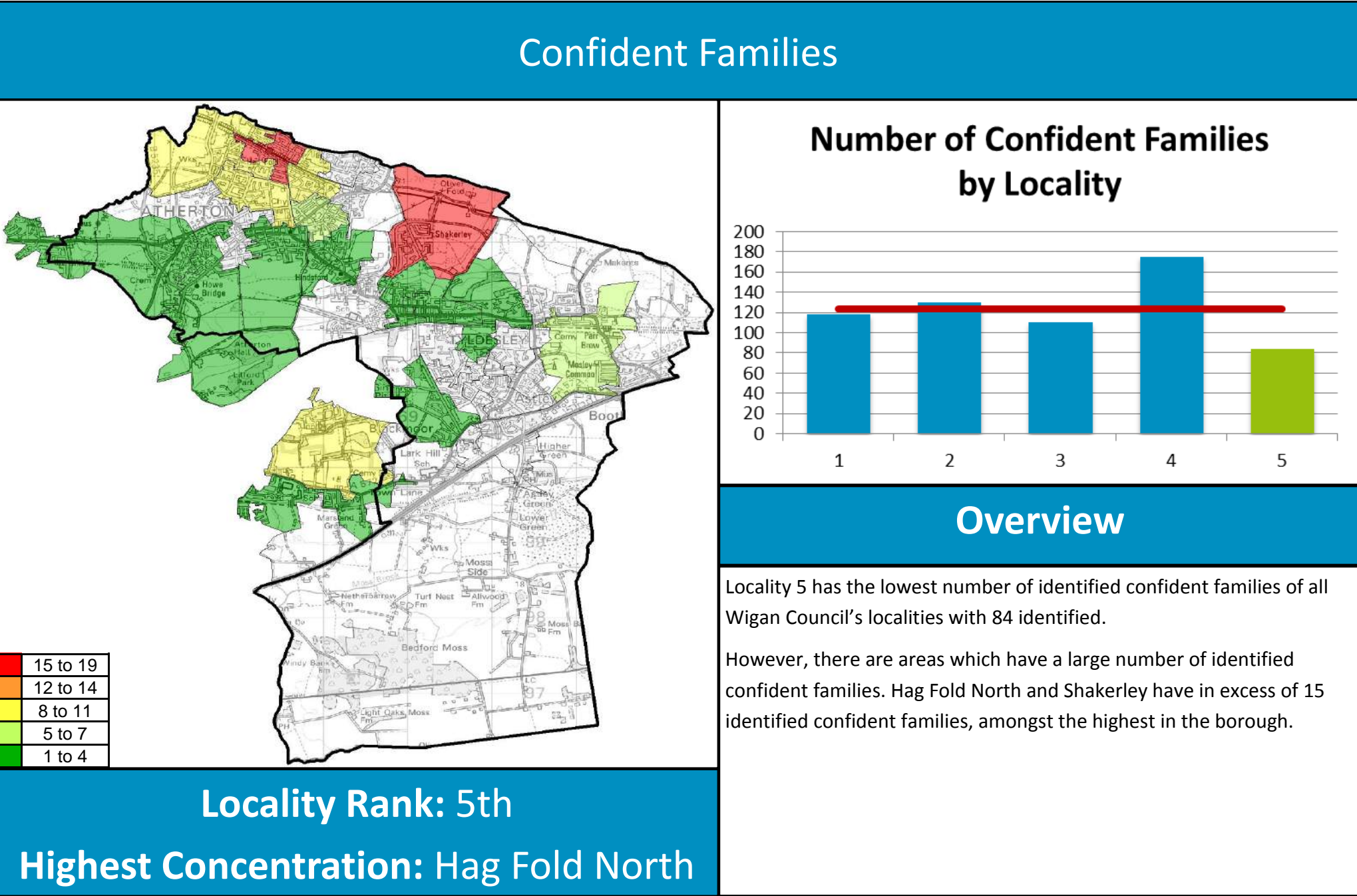
## Overview

Locality 5 has the lowest number of children living in out of work benefit households by locality of all Wigan Council’s localities with 1959 identified. The highest concentration of children living in out of work benefit households is in Hag Fold North with 240.

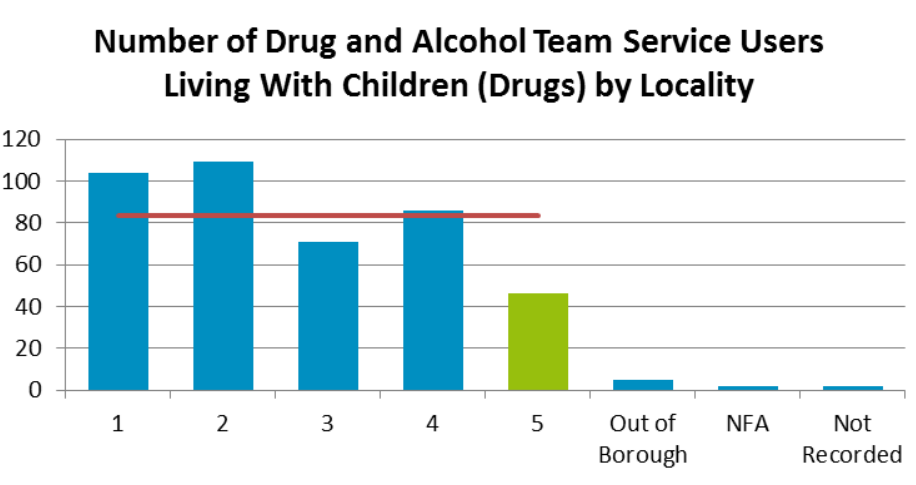
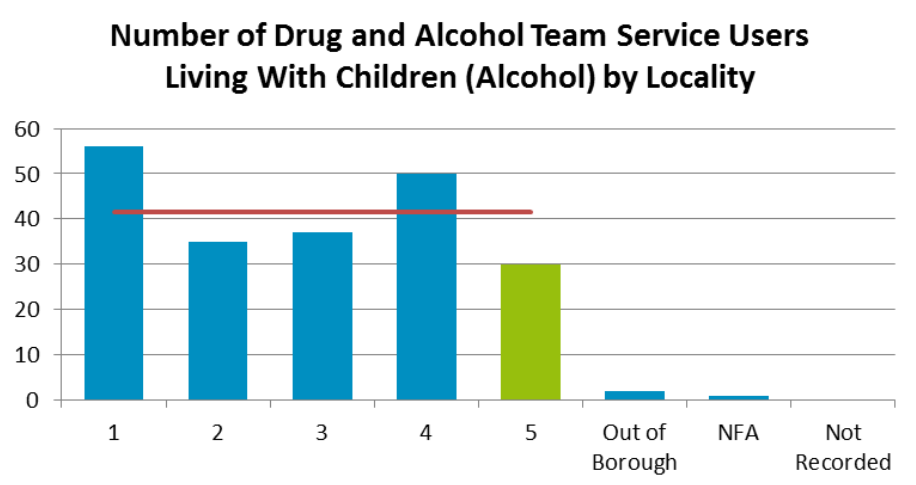
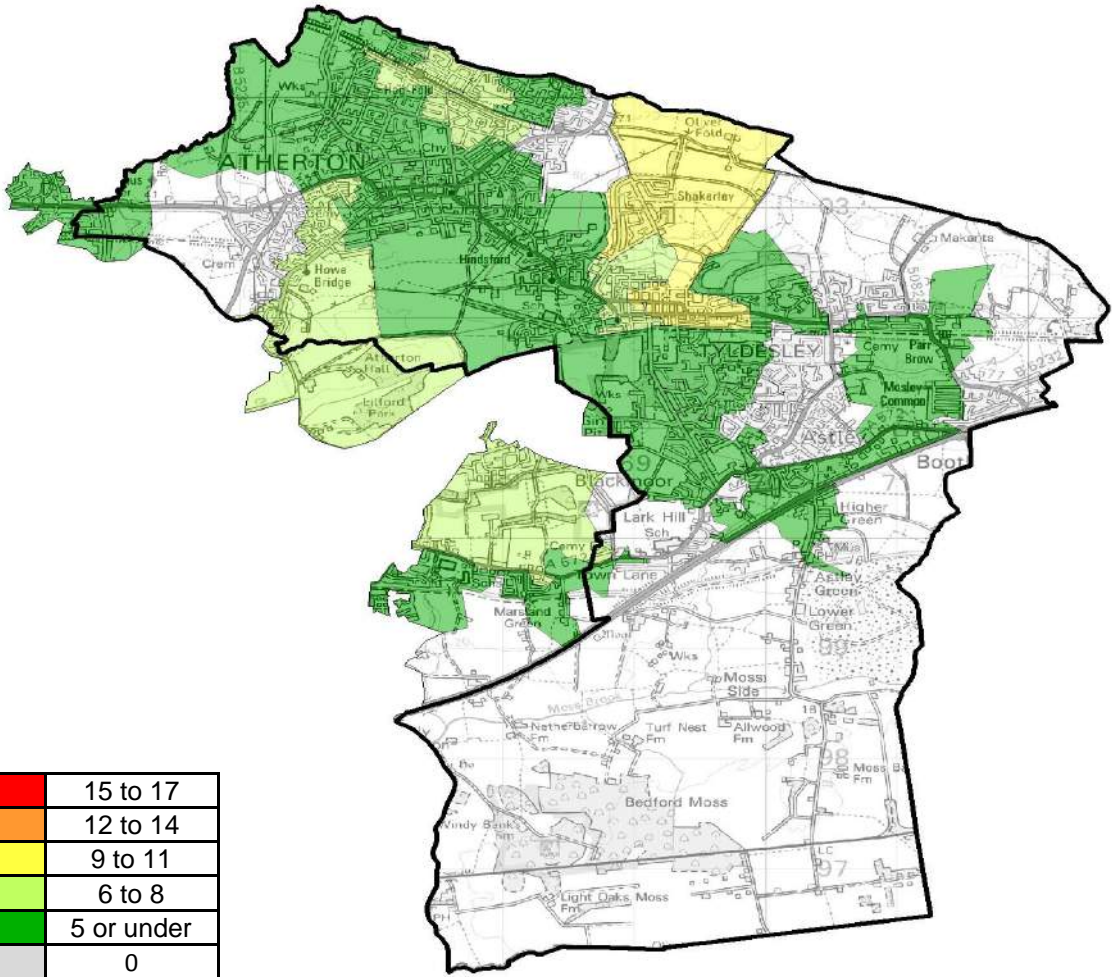
The average number of children living in out of work benefit households across all Wigan Council’s localities is 2864 children.

**Locality Rank: 5th**  
**Highest Concentration: Hag Fold North**





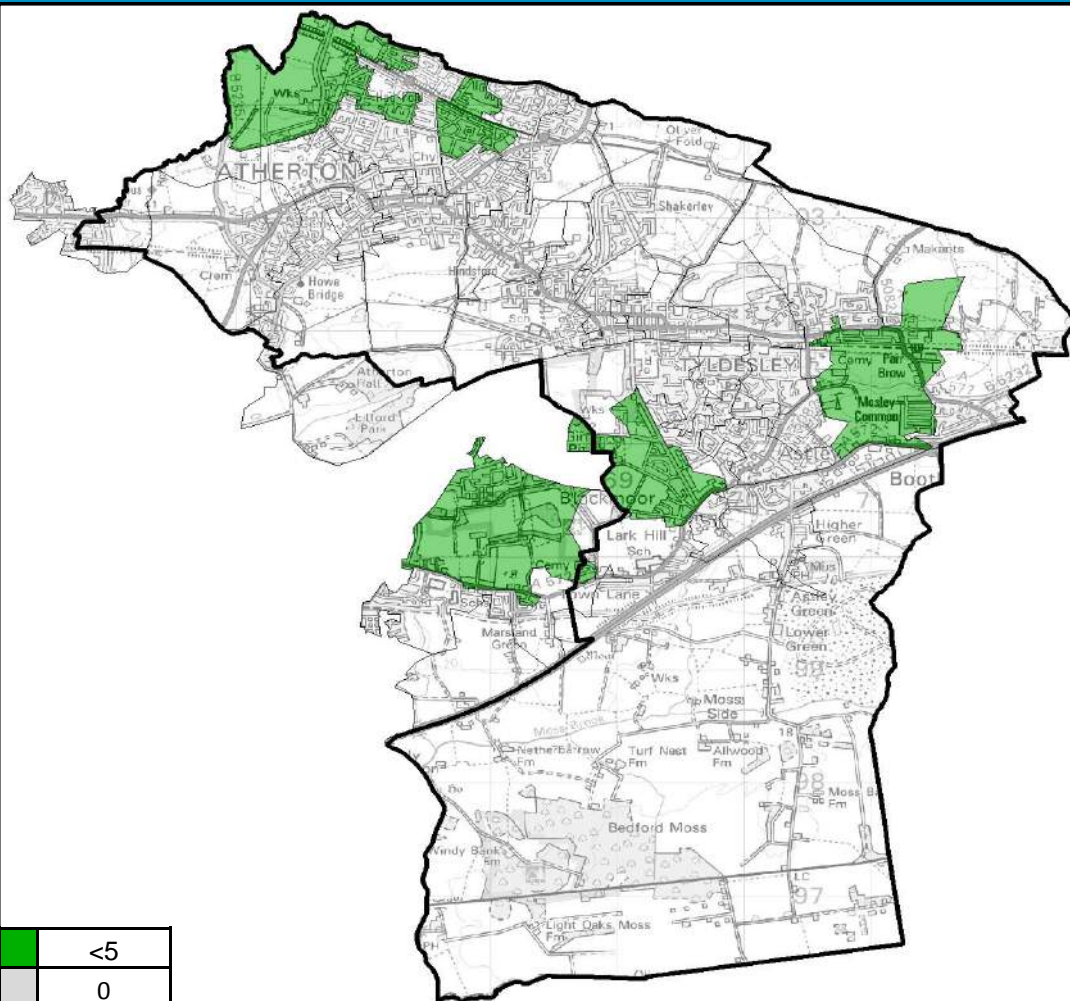
# Drug and Alcohol Service Users



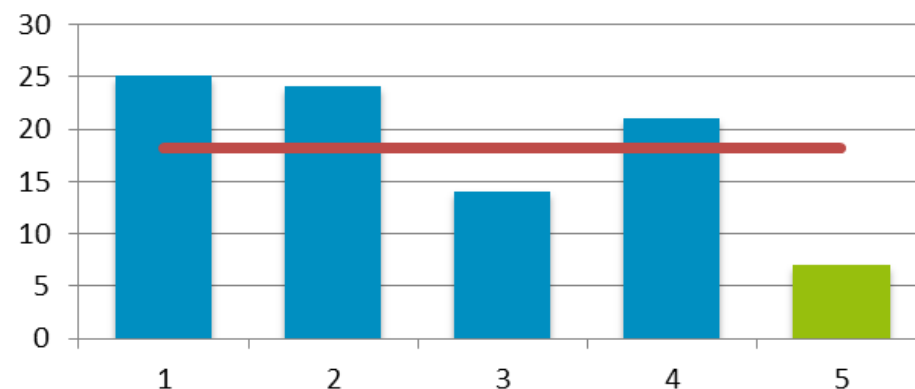
**Overview** Locality 5 has the lowest overall number of drug and alcohol service team users who live with children of all Wigan Borough's 5 localities. Shakerley and Tyldesley Centre has the highest number of Drug and Alcohol Team Service users that live with children in locality 1.

**Locality Rank: 5th**  
**Highest Concentration: Shakerley & Tyldesley Centre**

## Entrants to the Youth Justice System



### Entrants to Youth Justice System by Locality



### Overview

Locality 5 had the lowest number of entrants to the youth justice system with 7 entrants in 2013.

The borough average is 18 per locality.

**Locality Rank: 5th**

**Highest Concentration: 3 LSOAs**



# Matrix

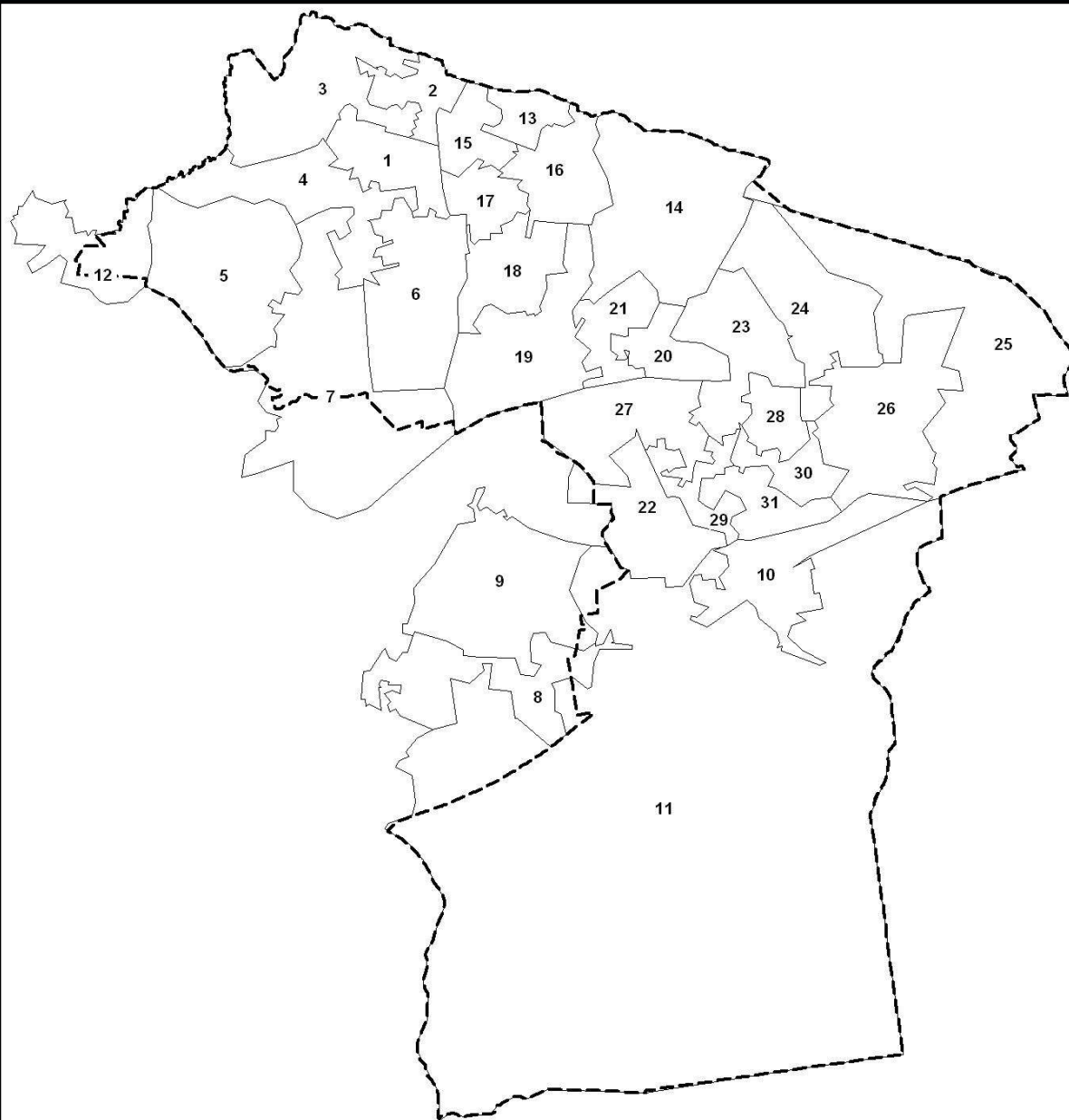
LSOA Code	LSOA Name	CAF assessments	Children Social Care	CPP	Gateway referrals	Looked after children	A & E attendance	Alcohol specific hospital stay	Child obesity (Reception)	Child obesity (Year 6)	Children with long term condition	Non elective admissions for intentional/unintentional injury	Non elective admissions for under 5's	Out patients appointments	GLD at EYFSP	Attainment level at KS2	Attainment level at KS4	Free school meals	NEET	SEN (Primary)	SEN (Secondary)	Unauthorised absence	BME	Child poverty	Children claiming DLA	Lone Parent Benefit	Out of work benefits	Confident Families	DAAT Users	Youth Justice System
E01006239	Hag Fold South																													
E01006240	Hag Fold North																													
E01006241	Hag Fold West																													
E01006242	Atherton West																													
E01006243	Howe Bridge / Lovers Lane																													
E01006244	Atherton Centre																													
E01006245	Howe Bridge																													
E01006246	Marsland Green / Hooten Green																													
E01006249	Higher Folds South																													
E01006250	Chaddock Lane / Astley Green																													
E01006251	Town Lane / The Mosses																													
E01006281	Dangerous Corner																													
E01006287	Hillside Avenue																													
E01006288	Shakerley																													
E01006289	Hag Fold East																													
E01006290	Bolton Road (Tyldesley)																													

# Matrix

		Youth Justice System																																																																																																																																																																																																																																																																																																																																																																																																																																																																																																																																																																																																																																																																																																																																																																																																																																																																																																																																																																																																																																																																																																																																																																																																																																																																																																																																																																																																																																																																																																																																																																																																																																																																																																																																																																																																				
--	--	----------------------	--	--	--	--	--	--	--	--	--	--	--	--	--	--	--	--	--	--	--	--	--	--	--	--	--	--	--	--	--	--	--	--	--	--	--	--	--	--	--	--	--	--	--	--	--	--	--	--	--	--	--	--	--	--	--	--	--	--	--	--	--	--	--	--	--	--	--	--	--	--	--	--	--	--	--	--	--	--	--	--	--	--	--	--	--	--	--	--	--	--	--	--	--	--	--	--	--	--	--	--	--	--	--	--	--	--	--	--	--	--	--	--	--	--	--	--	--	--	--	--	--	--	--	--	--	--	--	--	--	--	--	--	--	--	--	--	--	--	--	--	--	--	--	--	--	--	--	--	--	--	--	--	--	--	--	--	--	--	--	--	--	--	--	--	--	--	--	--	--	--	--	--	--	--	--	--	--	--	--	--	--	--	--	--	--	--	--	--	--	--	--	--	--	--	--	--	--	--	--	--	--	--	--	--	--	--	--	--	--	--	--	--	--	--	--	--	--	--	--	--	--	--	--	--	--	--	--	--	--	--	--	--	--	--	--	--	--	--	--	--	--	--	--	--	--	--	--	--	--	--	--	--	--	--	--	--	--	--	--	--	--	--	--	--	--	--	--	--	--	--	--	--	--	--	--	--	--	--	--	--	--	--	--	--	--	--	--	--	--	--	--	--	--	--	--	--	--	--	--	--	--	--	--	--	--	--	--	--	--	--	--	--	--	--	--	--	--	--	--	--	--	--	--	--	--	--	--	--	--	--	--	--	--	--	--	--	--	--	--	--	--	--	--	--	--	--	--	--	--	--	--	--	--	--	--	--	--	--	--	--	--	--	--	--	--	--	--	--	--	--	--	--	--	--	--	--	--	--	--	--	--	--	--	--	--	--	--	--	--	--	--	--	--	--	--	--	--	--	--	--	--	--	--	--	--	--	--	--	--	--	--	--	--	--	--	--	--	--	--	--	--	--	--	--	--	--	--	--	--	--	--	--	--	--	--	--	--	--	--	--	--	--	--	--	--	--	--	--	--	--	--	--	--	--	--	--	--	--	--	--	--	--	--	--	--	--	--	--	--	--	--	--	--	--	--	--	--	--	--	--	--	--	--	--	--	--	--	--	--	--	--	--	--	--	--	--	--	--	--	--	--	--	--	--	--	--	--	--	--	--	--	--	--	--	--	--	--	--	--	--	--	--	--	--	--	--	--	--	--	--	--	--	--	--	--	--	--	--	--	--	--	--	--	--	--	--	--	--	--	--	--	--	--	--	--	--	--	--	--	--	--	--	--	--	--	--	--	--	--	--	--	--	--	--	--	--	--	--	--	--	--	--	--	--	--	--	--	--	--	--	--	--	--	--	--	--	--	--	--	--	--	--	--	--	--	--	--	--	--	--	--	--	--	--	--	--	--	--	--	--	--	--	--	--	--	--	--	--	--	--	--	--	--	--	--	--	--	--	--	--	--	--	--	--	--	--	--	--	--	--	--	--	--	--	--	--	--	--	--	--	--	--	--	--	--	--	--	--	--	--	--	--	--	--	--	--	--	--	--	--	--	--	--	--	--	--	--	--	--	--	--	--	--	--	--	--	--	--	--	--	--	--	--	--	--	--	--	--	--	--	--	--	--	--	--	--	--	--	--	--	--	--	--	--	--	--	--	--	--	--	--	--	--	--	--	--	--	--	--	--	--	--	--	--	--	--	--	--	--	--	--	--	--	--	--	--	--	--	--	--	--	--	--	--	--	--	--	--	--	--	--	--	--	--	--	--	--	--	--	--	--	--	--	--	--	--	--	--	--	--	--	--	--	--	--	--	--	--	--	--	--	--	--	--	--	--	--	--	--	--	--	--	--	--	--	--	--	--	--	--	--	--	--	--	--	--	--	--	--	--	--	--	--	--	--	--	--	--	--	--	--	--	--	--	--	--	--	--	--	--	--	--	--	--	--	--	--	--	--	--	--	--	--	--	--	--	--	--	--	--	--	--	--	--	--	--	--	--	--	--	--	--	--	--	--	--	--	--	--	--	--	--	--	--	--	--	--	--	--	--	--	--	--	--	--	--	--	--	--	--	--	--	--	--	--	--	--	--	--	--	--	--	--	--	--	--	--	--	--	--	--	--	--	--	--	--	--	--	--	--	--	--	--	--	--	--	--	--	--	--	--	--	--	--	--	--	--	--	--	--	--	--	--	--	--	--	--	--	--	--	--	--	--	--	--	--	--	--	--	--	--	--	--	--	--	--	--	--	--	--	--	--	--	--	--	--	--	--	--	--	--	--	--	--	--	--	--	--	--	--	--	--	--	--	--	--	--	--	--	--	--	--	--	--	--	--	--	--	--	--	--	--	--	--	--	--	--	--	--	--	--	--	--	--	--	--	--	--	--	--	--	--	--	--	--	--	--	--	--	--	--	--	--	--	--	--	--	--	--	--	--	--	--	--	--	--	--	--	--	--	--	--	--	--	--	--	--	--	--	--	--	--	--	--	--	--	--	--	--	--	--	--	--	--	--	--	--	--	--	--	--	--	--	--	--	--	--	--	--	--	--	--	--	--	--	--	--	--	--	--	--	--	--	--	--	--	--	--	--	--	--	--	--	--	--	--	--	--	--	--	--	--	--	--	--	--	--	--	--	--	--	--	--	--	--	--	--	--	--	--	--	--	--	--	--	--	--	--	--	--	--	--	--	--	--	--	--	--	--	--	--	--	--	--	--	--	--	--	--	--	--	--	--	--	--	--	--	--	--	--	--	--	--	--	--	--	--	--	--	--	--	--	--	--	--	--	--	--	--	--	--	--	--	--	--	--	--	--	--	--	--	--	--	--	--	--	--	--	--	--	--	--	--	--	--	--	--	--	--	--	--	--	--	--	--	--	--	--	--	--	--	--	--	--	--	--	--	--	--	--	--	--	--	--	--	--	--	--	--	--	--	--	--	--	--	--	--	--	--	--	--	--	--	--	--	--	--	--	--	--	--	--	--	--	--	--	--	--	--	--	--	--	--	--	--	--	--	--	--	--	--	--	--	--	--	--	--	--	--	--	--	--	--	--	--	--	--	--	--	--	--	--	--	--	--	--	--	--	--	--	--	--	--	--	--	--	--	--	--	--	--	--	--	--	--	--	--	--	--	--	--	--	--	--	--	--	--	--	--	--	--	--	--	--	--	--	--	--	--	--	--	--	--	--	--	--	--	--	--	--	--	--	--	--	--	--	--	--	--	--	--	--	--	--	--	--	--	--	--	--	--	--	--	--	--	--	--	--	--	--	--	--	--	--	--	--	--	--	--	--	--	--	--	--	--	--	--	--	--	--	--	--	--	--	--	--	--	--	--	--	--	--	--	--	--	--	--	--	--	--	--	--	--	--	--	--	--	--	--	--	--	--	--	--	--	--	--	--	--	--	--	--	--	--	--	--	--	--	--	--	--	--	--	--	--	--	--	--	--	--	--	--	--	--	--	--	--	--	--	--	--	--	--	--	--	--	--	--	--	--	--	--	--	--	--	--	--	--	--	--	--	--	--	--	--	--	--	--	--	--	--	--	--	--	--	--	--	--	--	--	--	--	--	--	--	--	--	--	--	--	--	--	--	--	--	--	--	--	--	--	--	--	--	--	--	--	--	--	--	--	--	--	--	--	--	--	--	--	--	--	--	--	--	--	--	--	--	--	--	--	--	--	--	--	--	--	--	--	--	--	--	--	--	--	--	--	--	--	--	--	--	--	--	--	--	--	--	--	--	--	--	--	--	--	--	--	--	--	--	--	--	--	--	--	--	--	--	--	--	--	--	--	--	--	--	--	--	--	--	--	--	--	--	--	--	--	--	--	--	--	--	--	--	--	--	--	--	--	--	--	--	--	--	--	--	--	--	--	--	--	--	--	--	--	--	--	--	--	--	--	--	--	--	--	--	--	--	--	--	--	--	--

## Reference Map

	LSOA Name
1	Hag Fold South
2	Hag Fold North
3	Hag Fold West
4	Atherton West
5	Howe Bridge / Lovers Lane
6	Atherton Centre
7	Howe Bridge
8	Marsland Green / Hooten Green
9	Higher Folds South
10	Chaddock Lane / Astley Green
11	Town Lane / The Mosses
12	Dangerous Corner
13	Hillside Avenue
14	Shakerley
15	Hag Fold East
16	Bolton Road (Tyldesley)
17	Atherton East
18	Hindsford
19	Hindsford South
20	Tyldesley Centre
21	Tyldesley West
22	Blackmoor / Gin Pit
23	Cleworth Hall / North Stour
24	Parkfield / Mort Lane
25	Mosley Common
26	Mosley Common / Sale Lane
27	Tyldesley South
28	Bodmin Road
29	New Hall / The Ley
30	New Hall / Astley North
31	New Hall / Astley South





## Notes on Datasets

<u>Dataset</u>	<u>Timeframe</u>
Population	Mid-Year Estimates 2012
BME	2011
CAF Assessments	2013
Referrals to Children's Social Care	2013
Child Protection Plans	2013/14
Gateway Referrals	2013
Looked After Children	2013/14
A&E Attendances for Under 5s	2013/14
Alcohol Specific Hospital Stays for Under 18s	2013/14
Child Obesity	2011/12
Non-Elective Admissions of Children with a Long-Term Condition	2013/14
Non-Elective Admissions for Under 5s	2013/14
Non-Elective Activity for Intentional and Unintentional Injuries	2013/14
Outpatient Appointments for Under 5s	2013/14
EYFS, KS2 & KS4 Attainment Data	2012/13
Eligibility for Free School Meals	As at January 2014
NEET	As at December 2013
Children with a level of SEN	As at January 2014
Children with 15%+ Unauthorised absence	2012/13
Demand for School Places	2012/13
School Ofsted Ratings	As at May 2014
Children Living in Poverty	2011
Children Claiming DLA	As at August 2013
Lone Parent Benefit	As at August 2013
Children Living in Out of Work Benefit Households	As at August 2013
Confident Families	As at January 2014
Drug and Alcohol Service Users	As at September 2013
Entrants to the Youth Justice System	2013