

Locality Profiles

Locality 4 - Leigh, Golborne and Lowton

Children and Young People's Services

Joint Intelligence Unit

April 2014

Contents

| | <u>Page</u> |
|----------------------------------|-------------|
| Overview | 3 |
| Population | 4 |
| Social Care | 7 |
| Hospital Activity | 12 |
| Education | 20 |
| Benefits | 32 |
| Confident Families, DAAT & Crime | 36 |
| Matrix | 39 |
| Reference Map | 42 |
| Notes on Datasets | 43 |

Overview

Situated in the south of the Borough, Locality 4 has a general population of 64,883 of which 14,673 (22.6%) are 18 or younger.

There are some trends in the data. Westleigh East has the highest number of referrals to children's social care, the highest rate of children living in poverty and Westleigh East and Hilton Park have the highest number of confident families in the locality. Westleigh East has the most lone payment benefit claimants and the highest number of children living in an out of work benefit household. Also, Westleigh East has the highest rate of child obesity for reception age children and the lowest rate of attainment at key stage 2.

Plank Lane/ Firs Lane has the highest number of non elective admissions of children with a long term condition, one of the highest numbers of children 0-16 claiming DLA and the highest number of first time entrants to the youth justice system.

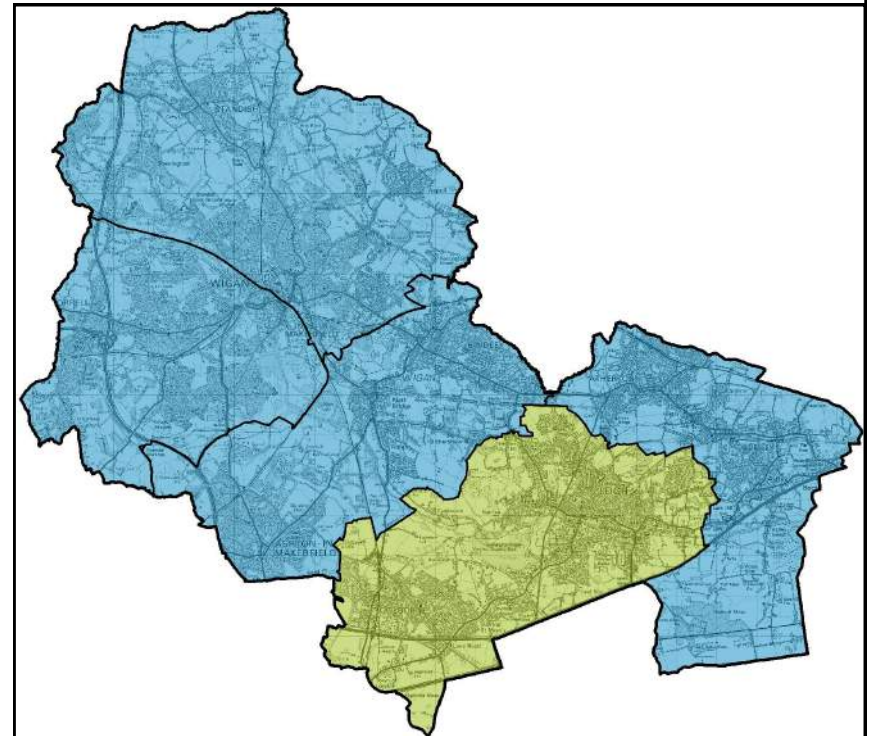
Leigh Centre has the highest number of non elective admissions for under 5s and the highest number of outpatient appointments for under 5s.

Higher folds North has the highest number of children with child protection plans and the lowest rate of EYFSP children showing a good level of attainment at key stage 2. Higher Folds South has the most Gateway referrals and the higher number of children eligible for free school meals

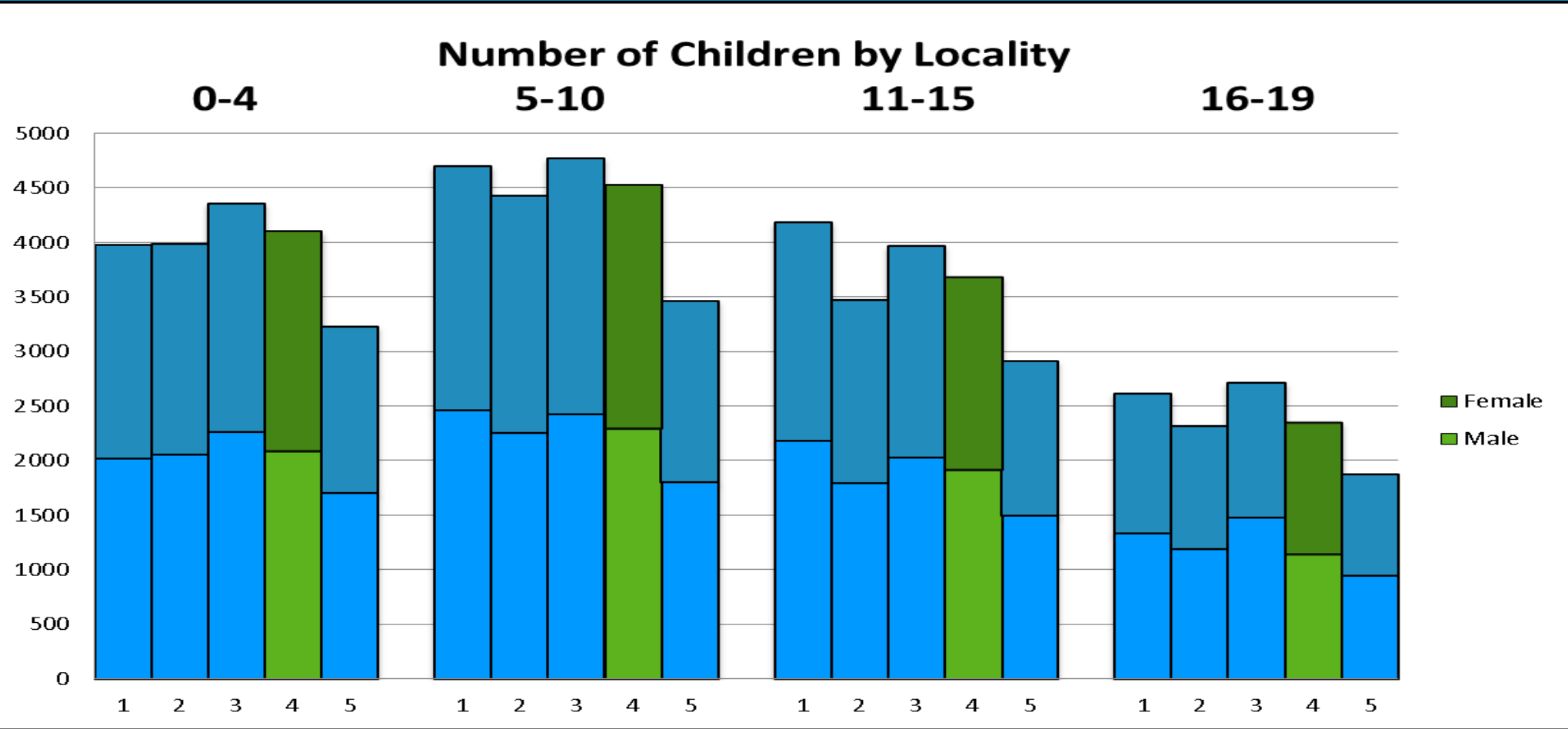
Derby Road Estate East has the highest rate of children with an SEN in secondary education.

To gain a more general overview of each LSOA, consult the matrix on pages 39-41.

NB: A locality rank is given for each element. If a locality is ranked 1st, this would mean that the locality has the highest numbers of that element. A rank of 1st in Looked After Children would mean that that locality has the highest numbers of Looked After Children. Red lines on graphs indicate locality average. As some of the datasets contain low figures, any values under 5 (or under 10 for social care) have been suppressed to avoid identification of individuals.



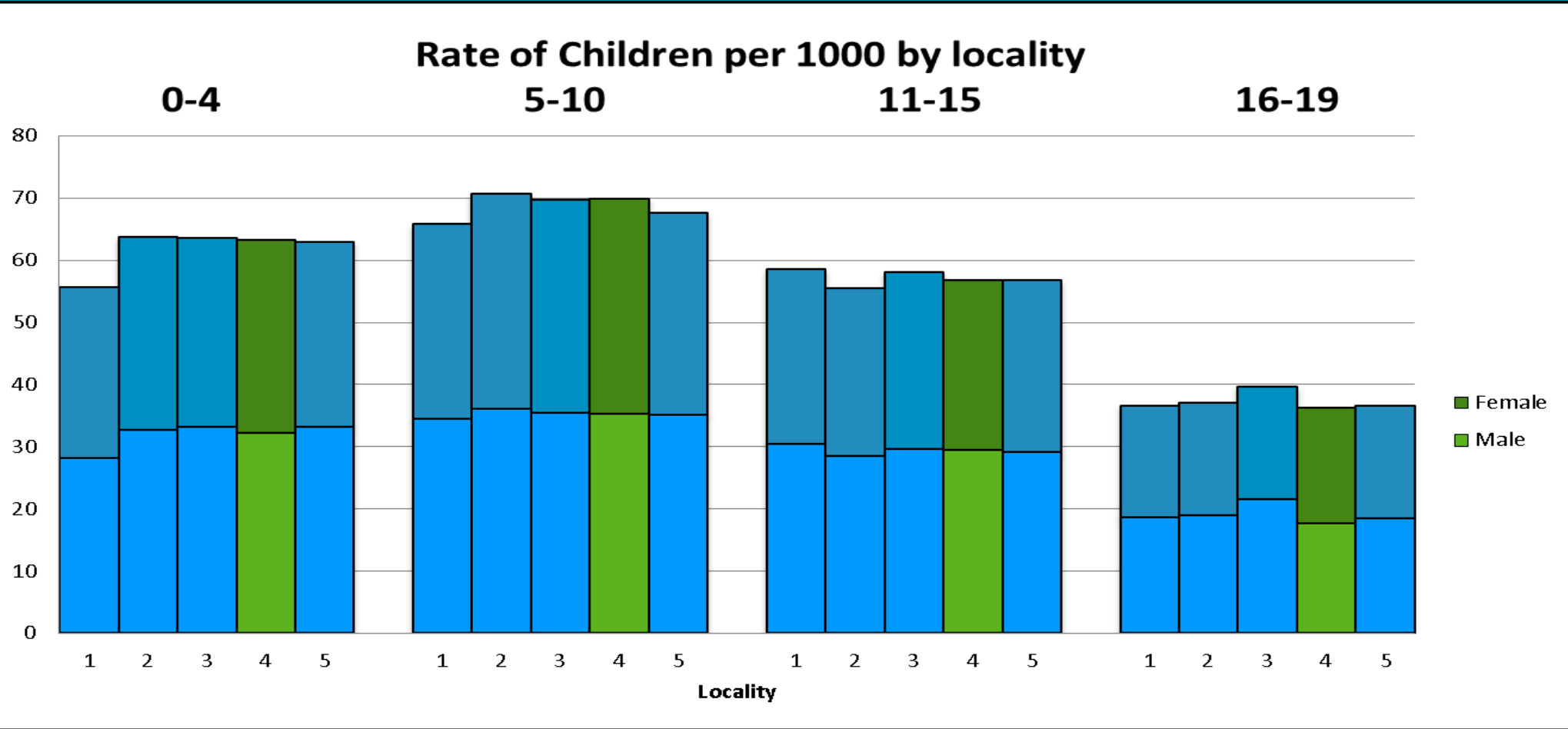
Population—Actual Figures



Overview

The number of children in locality 4 is similar to the other 4 localities. The graph illustrates an even mix of males and females across all four age bands.

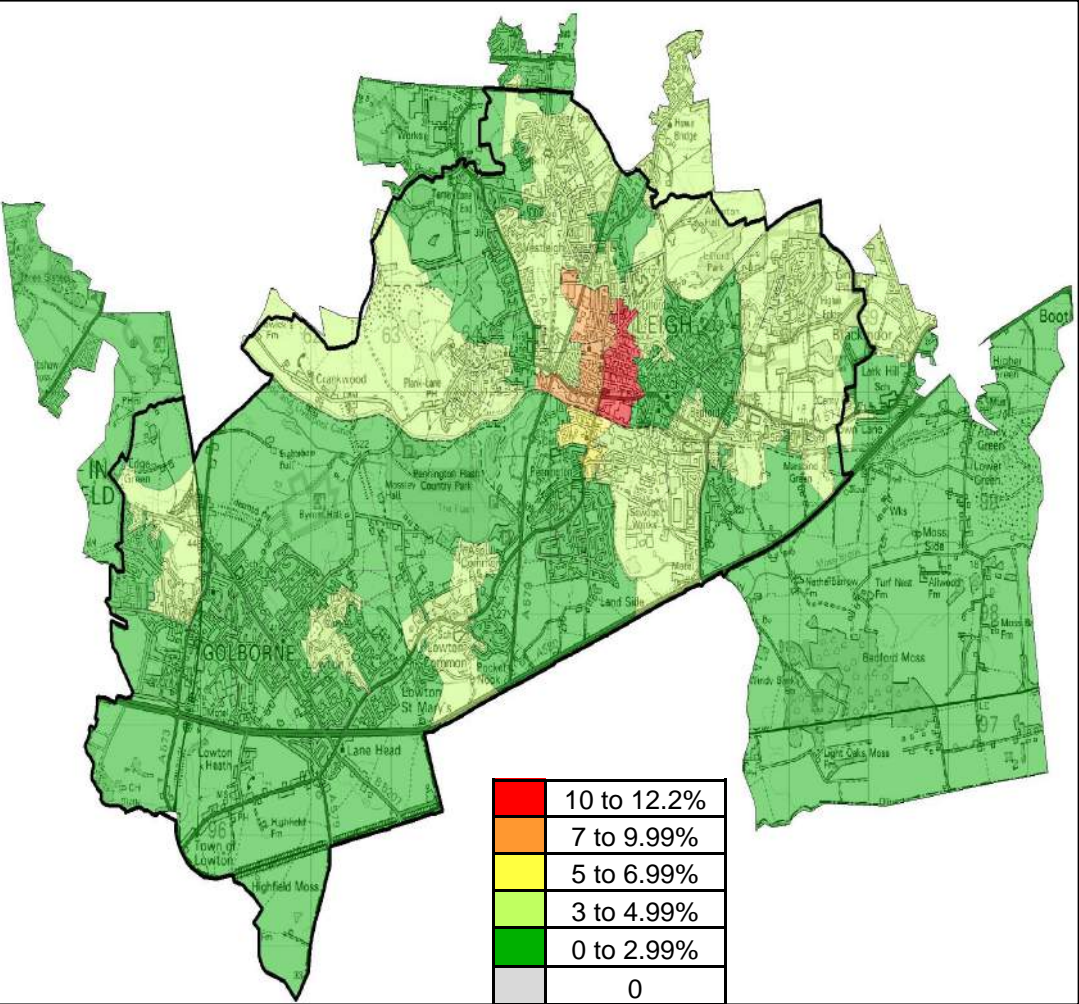
Population—Rates per 1000



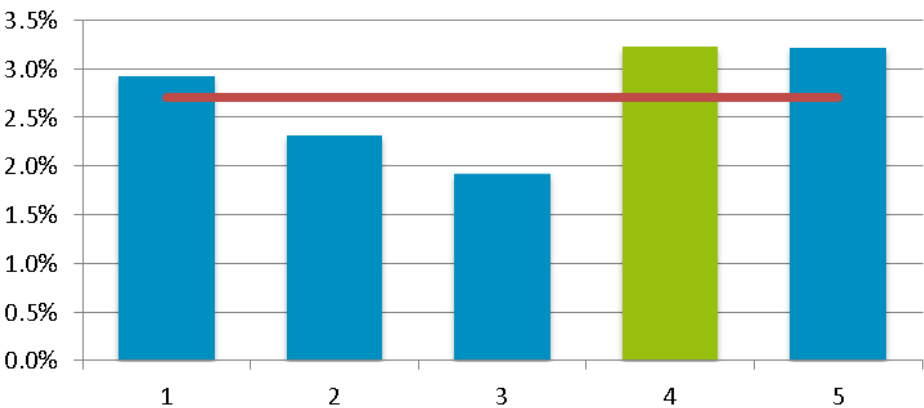
Overview

Locality 4 has a similar breakdown of children by age category to the other localities.

BME Breakdown



Rate of Non-White British in Population by Locality



Overview

Locality 4 has the highest rate of Non-White British with 3.2% identified. Leigh Centre has the highest concentration rate of Non-White British within the locality with 10.7% identified.

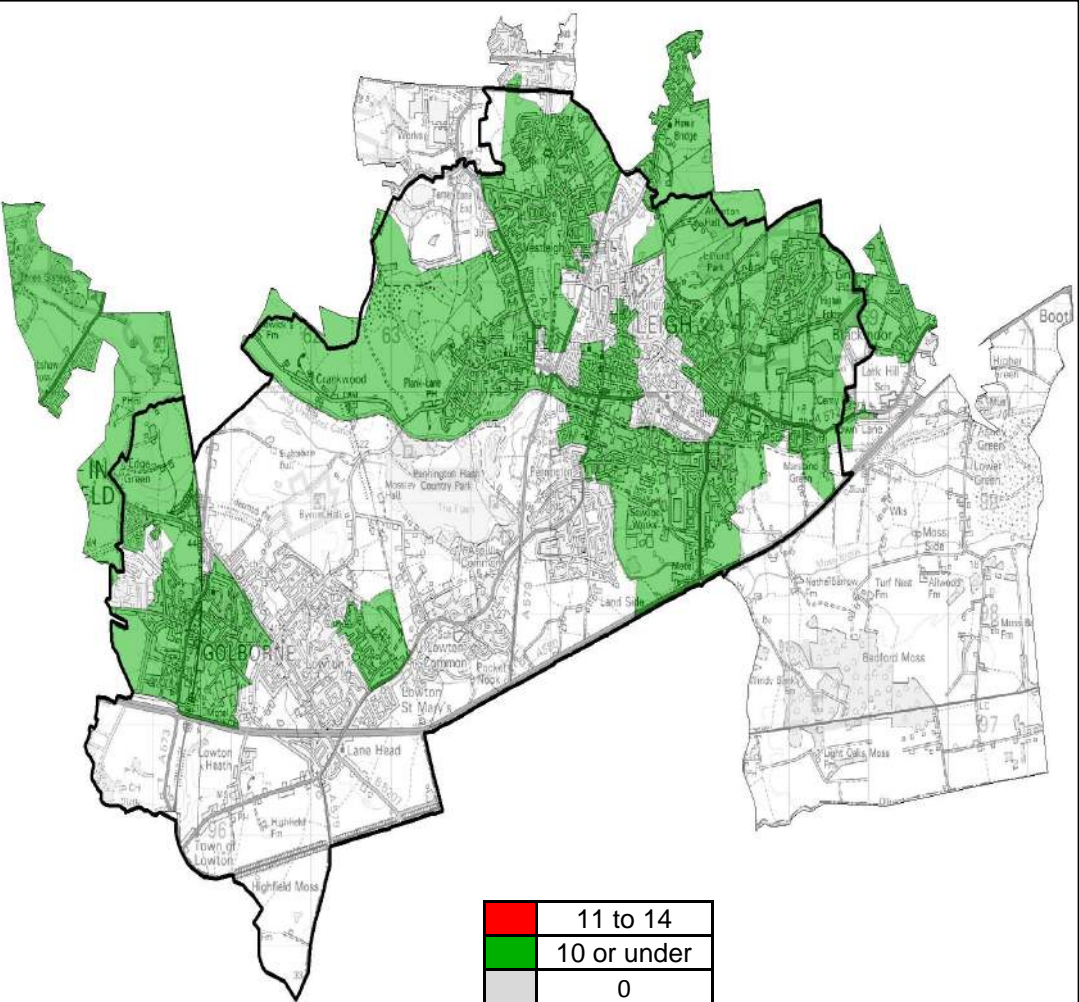
The average rate across all localities for Non-White British in population is 2.7%.

Wigan Council is in the first quartile for rate of non-White British in population when compared with statistical neighbours.

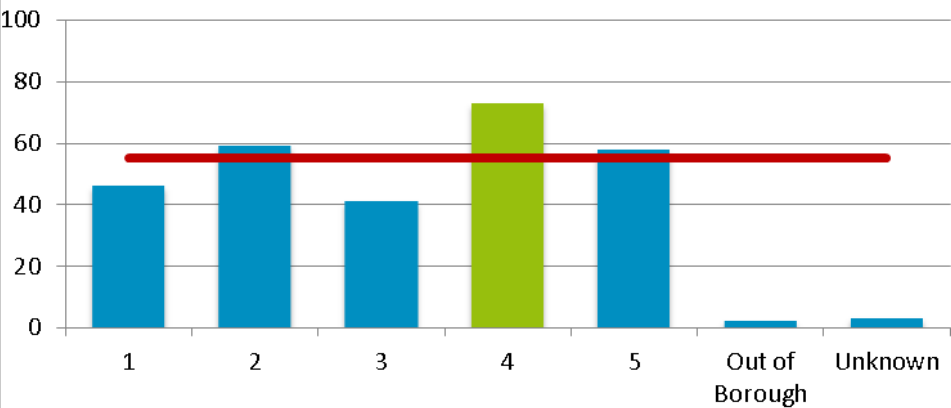
| | | | |
|-----|-----|-----|-----|
| 4th | 3rd | 2nd | 1st |
|-----|-----|-----|-----|

Locality Rank: 1st
Highest Concentration: Leigh Centre

CAF Assessments (Opened)



Number of CAF Assessments Opened by Locality



Overview

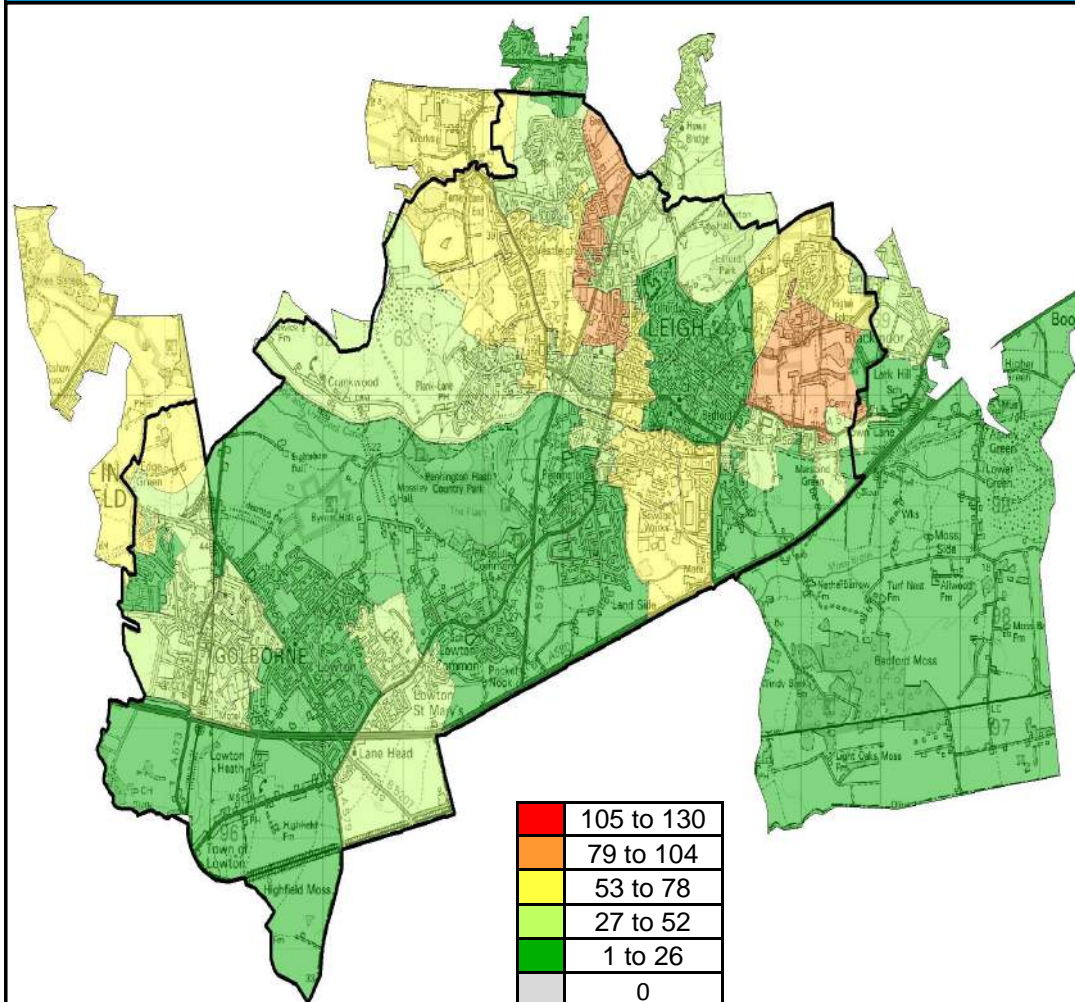
Locality 4 has the highest number of CAF assessments opened across all localities with 73 assessments. The highest concentration of CAF assessments opened is Warrington Road West.

The average CAF assessments across all localities is 55.

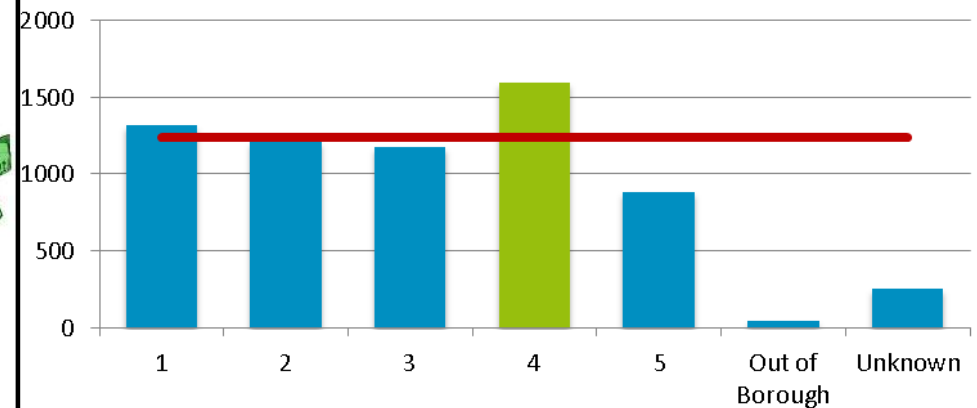
Locality Rank: 1st

Highest Concentration: Warrington Road West

Referrals to Children's Social Care



Number of Referrals to Children's Social Care by Locality



Overview

Locality 4 had the highest number of referrals to Children's Social Care in 2013 of all Wigan Council's localities with 1599 referrals.

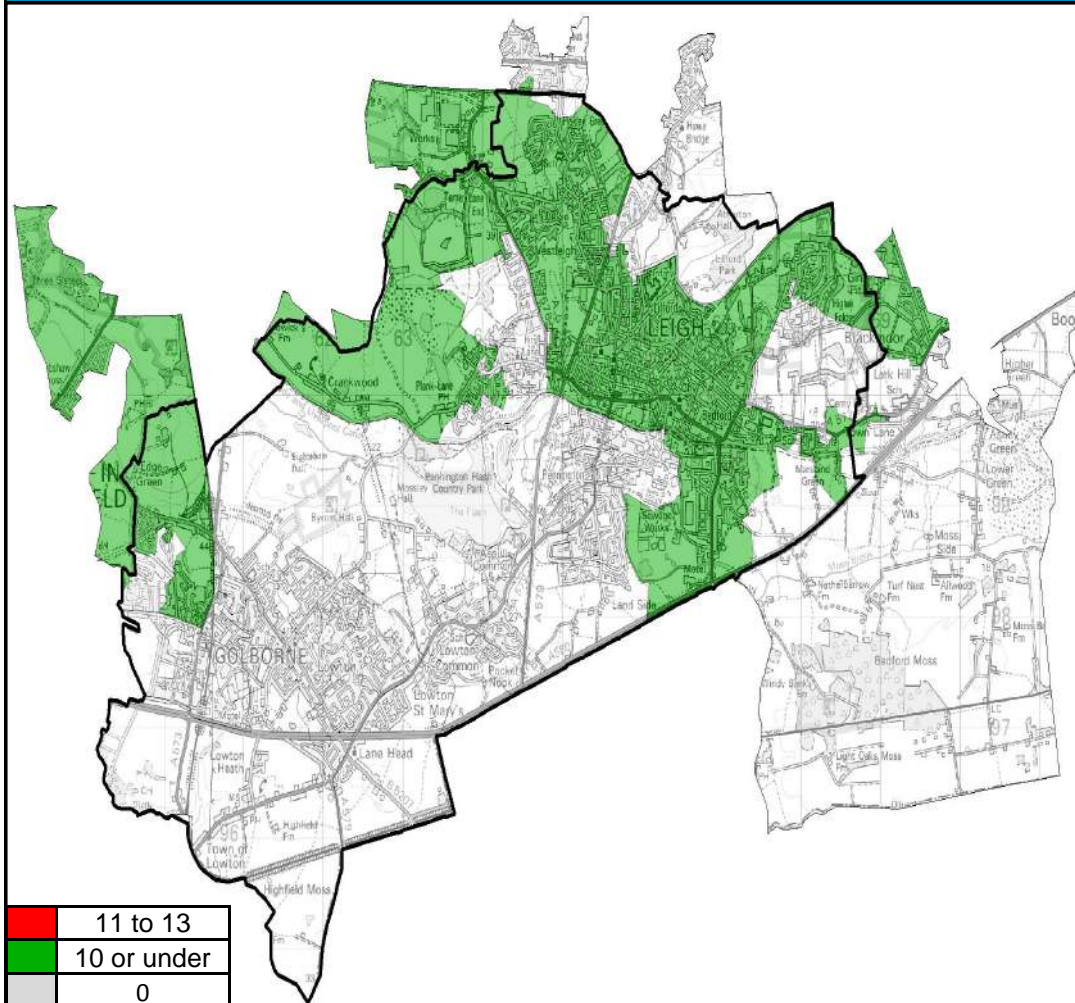
Westleigh East had the most referrals of any LSOA in the locality with 106 referrals.

The average number of referrals to Children's Social Care in 2013 across all of the borough's Localities was 1238.

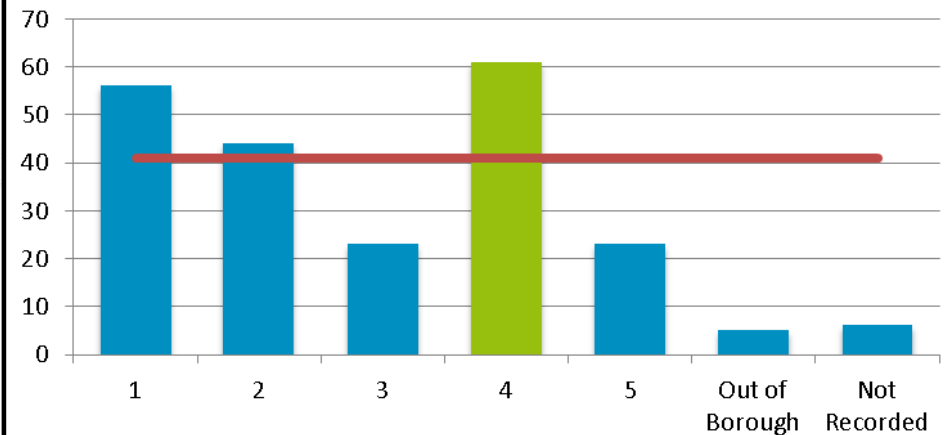
Locality Rank: 1st

Highest Concentration: Westleigh East

Child Protection Plans



Number of Children with a Child Protection Plan by Locality



Overview

Locality 4 has the highest number of Children with a Protection Plan with 61 children identified.

The highest number of Children with a Protection Plan are situated in Higher Folds North.

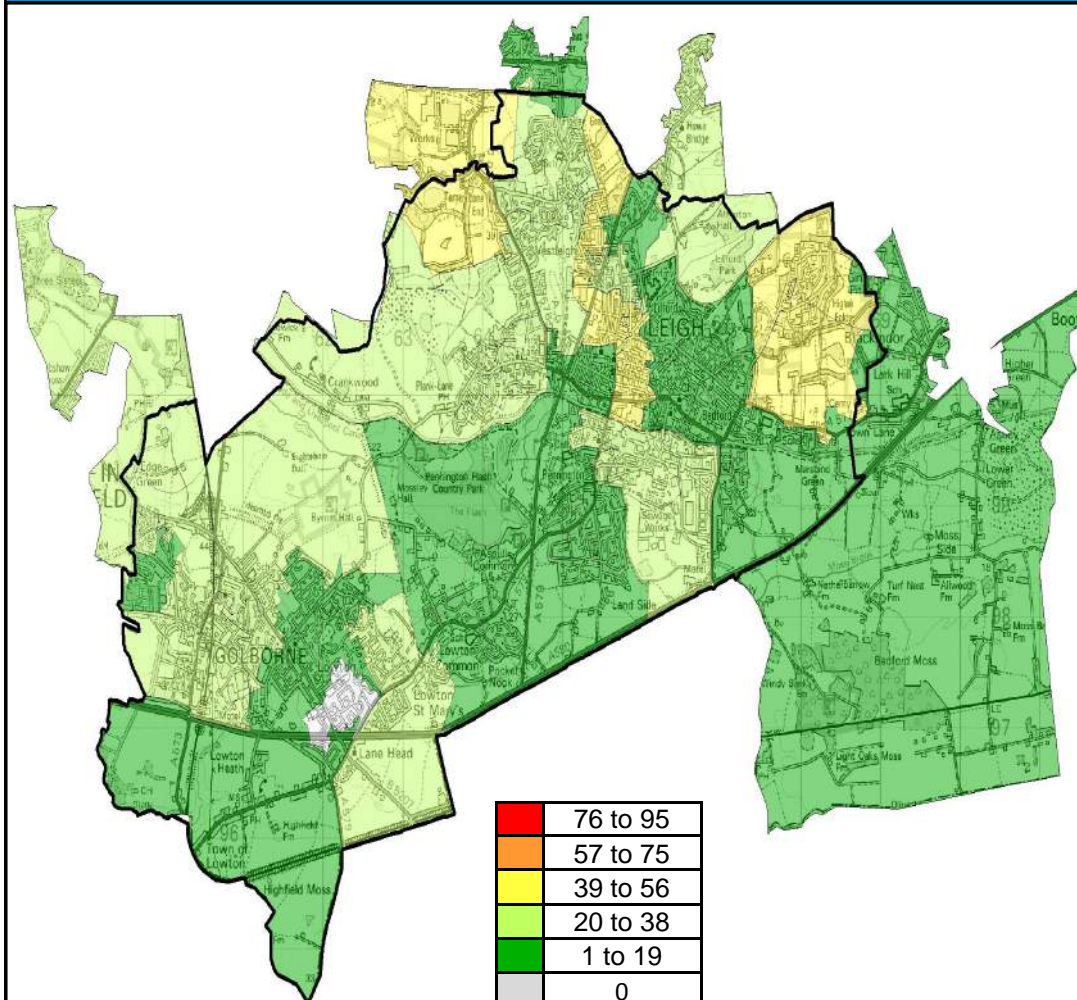
The average number of Children with a Protection Plan across the 5 localities is 41 children.

Wigan Council is in the second quartile for rates of CPP when compared with statistical neighbours

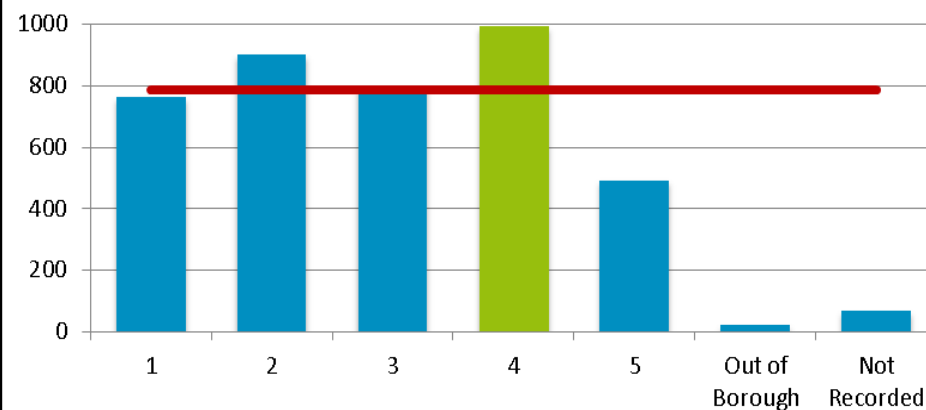
| | | | |
|-----|-----|-----|-----|
| 4th | 3rd | 2nd | 1st |
|-----|-----|-----|-----|

Locality Rank: 1st
Highest Concentration: Higher Folds North

Gateway Referrals (Opened)



Number of Gateway Referrals Opened by Locality



Overview

Locality 4 had the highest number of Gateway referrals opened in 2013 of all Wigan Council's localities with 991 opened.

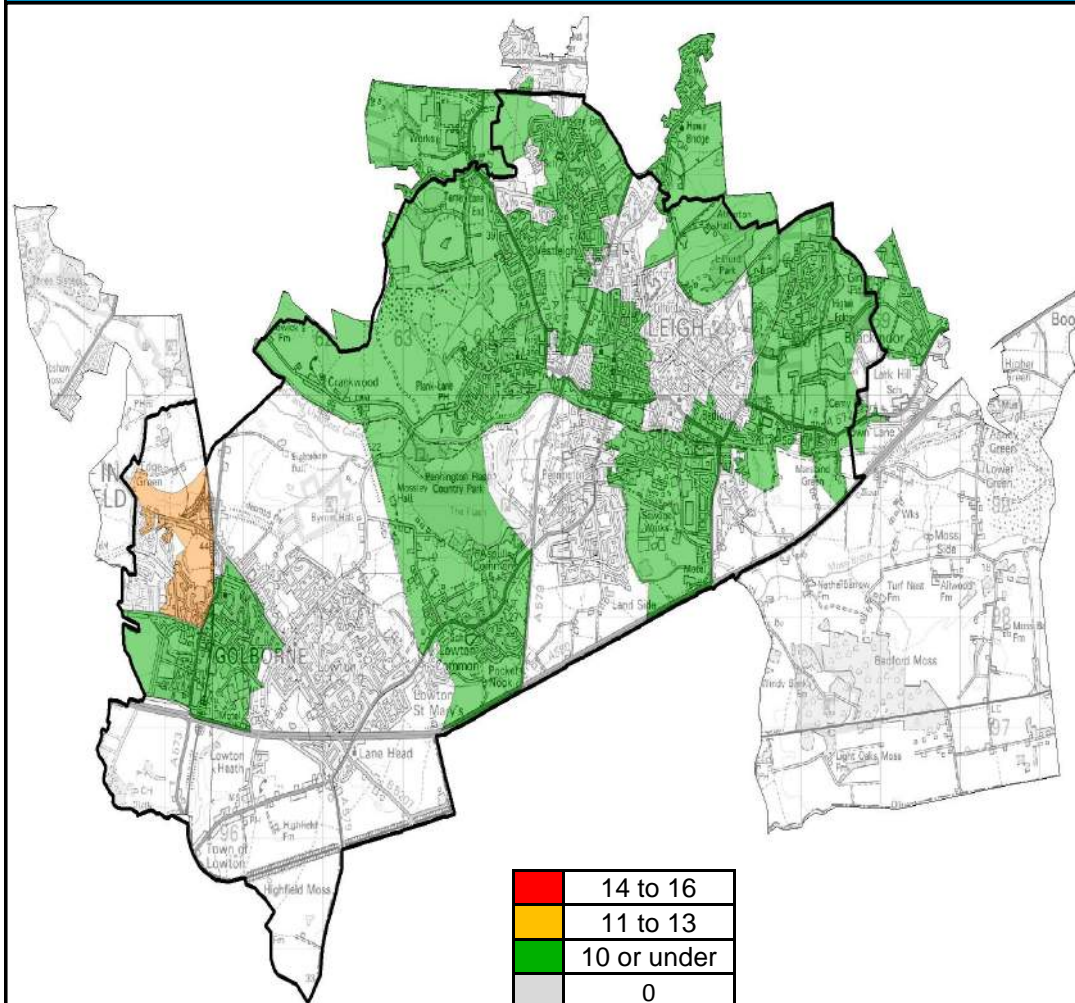
The area with most gateway referrals opened in 2013 is Higher Folds South with 53.

The average number of opened gateway referrals in 2013 was 787.

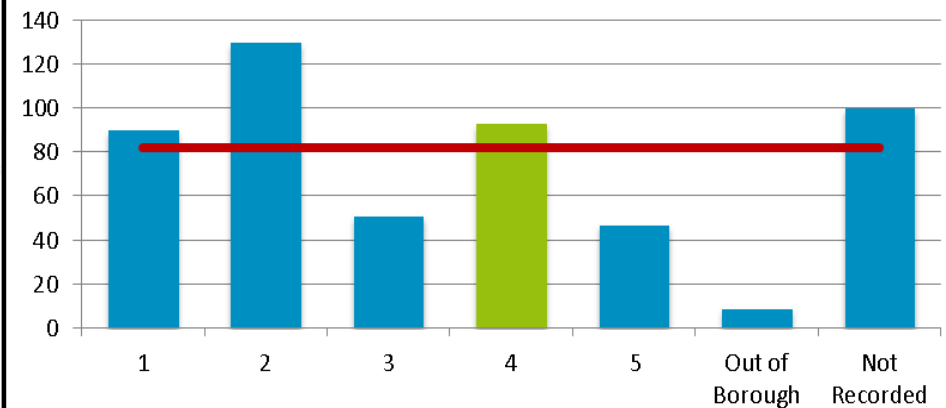
Locality Rank: 1st

Highest Concentration: Higher Folds South

Looked After Children



Number of Looked After Children by Locality



Overview

Locality 4 has the second highest number of Looked After Children of all Wigan Council's localities with 92 identified.

The highest number of Looked After Children are situated in Golborne North which has 12.

The average number of Looked After Children for all of the localities is 82 .

Wigan Council is in the second quartile for rates of LAC when compared with statistical neighbours

4th

3rd

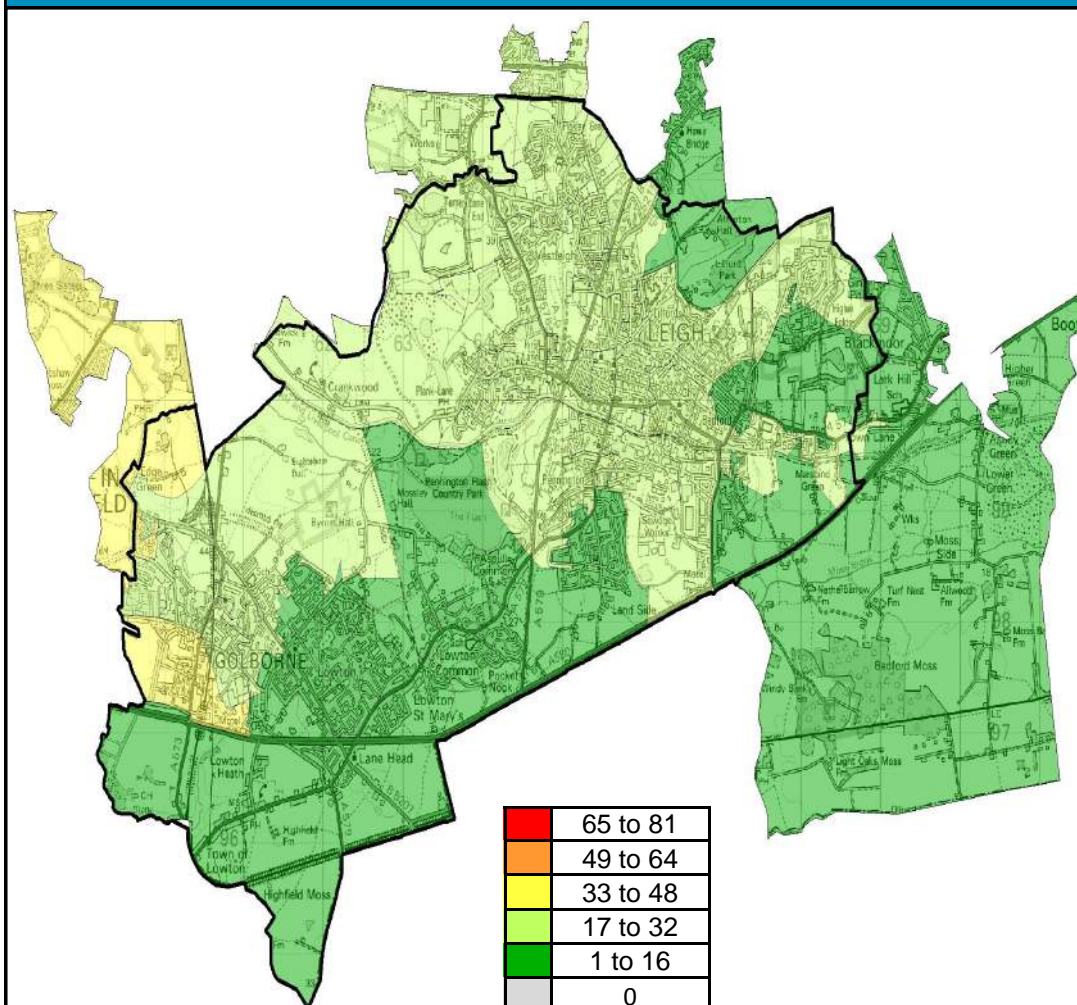
2nd

1st

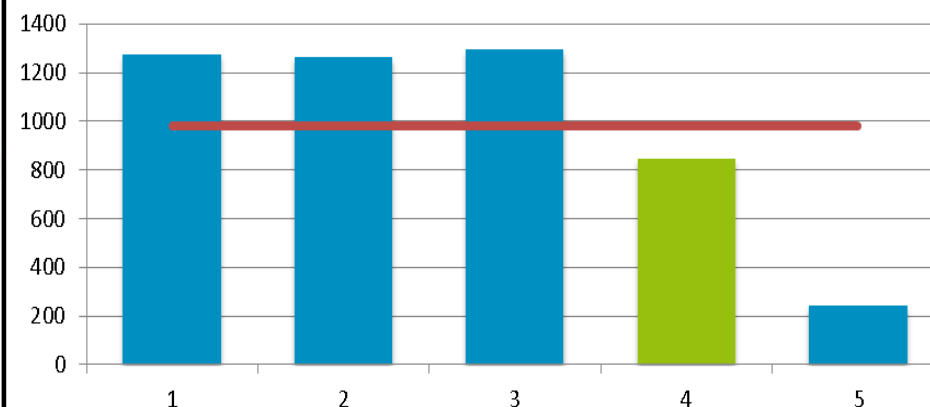
Locality Rank: 2nd

Highest Concentration: Golborne North

A&E Attendances for Under 5s



Number of A&E Attendances for Under 5s by Locality



Overview

Locality 4 had the second lowest number of A&E attendances for under 5s between April 13 and February 14 of all Wigan Council's localities with 848 attendances.

The areas with the highest number of attendances are closer to Wigan Hospital. Areas further away from the centre may visit other hospitals.

The average number of admissions across all of the Borough's Localities is 983.

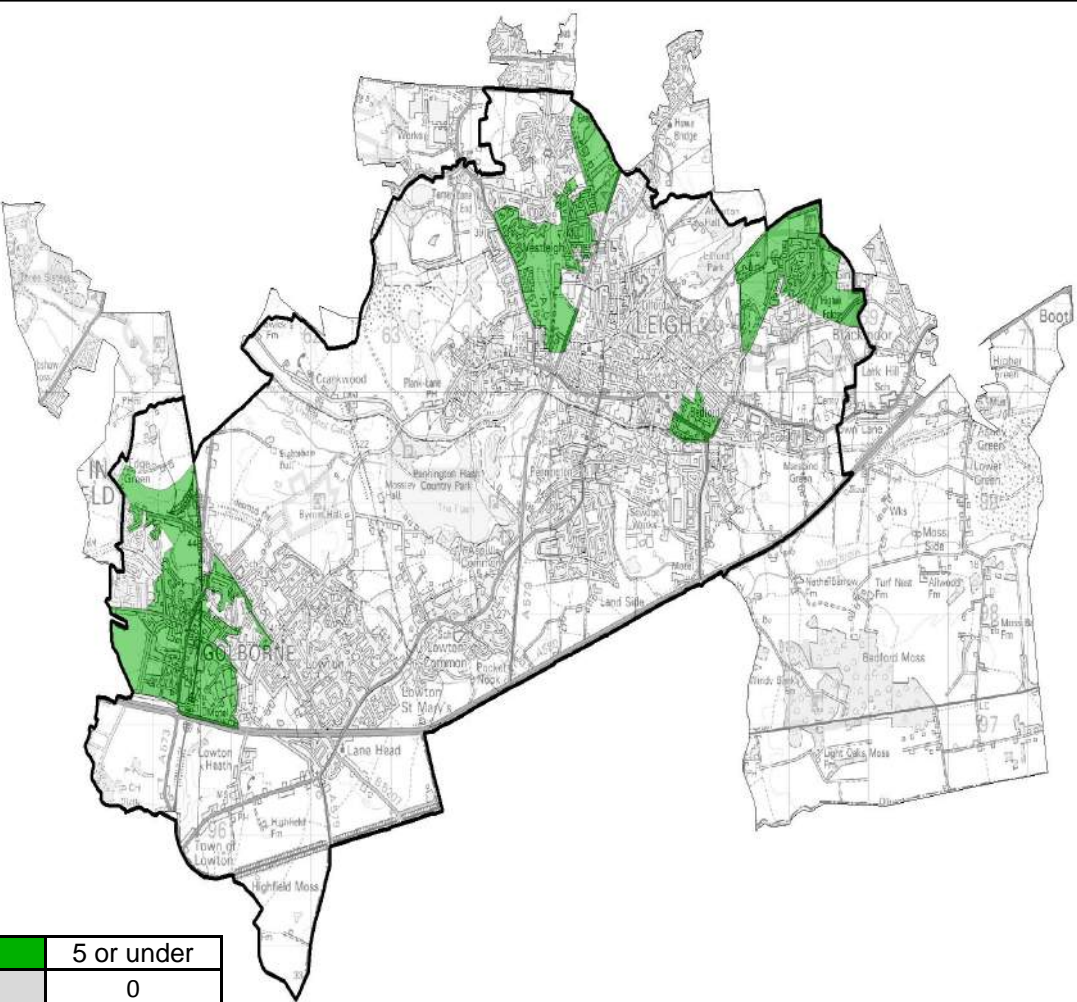
Wigan Council is in the third quartile for rates of A&E Attendances for under 5s when compared with national averages

| | | | |
|-----|-----|-----|-----|
| 4th | 3rd | 2nd | 1st |
|-----|-----|-----|-----|

Locality Rank: 4th

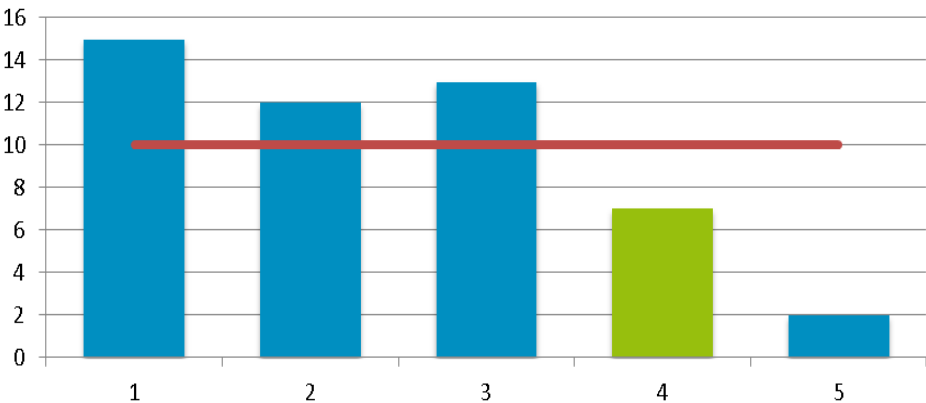
Highest Concentration: Golborne South

Alcohol Specific Hospital Stays for Under 18s



Locality Rank: 4th

Number of Under 18 Alcohol Specific Hospital Stays by Locality

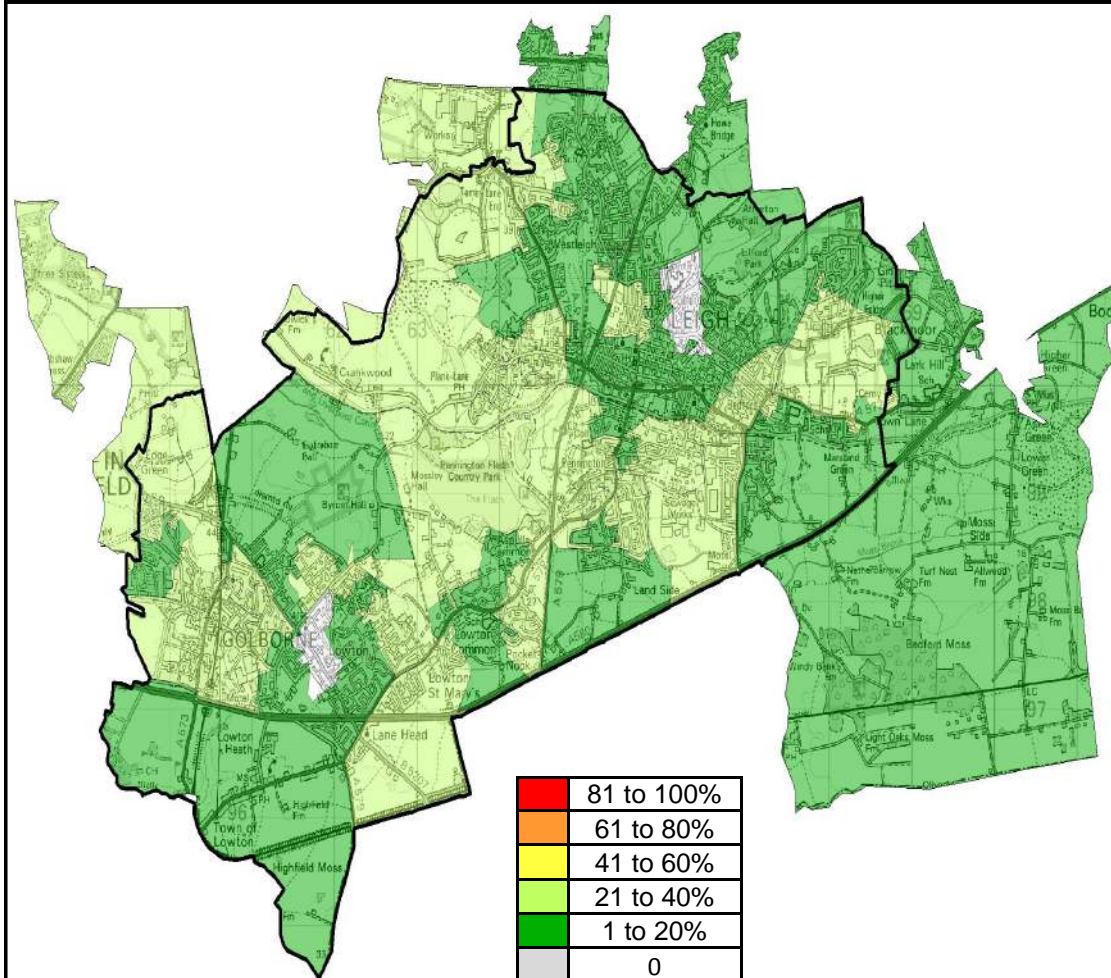


Overview

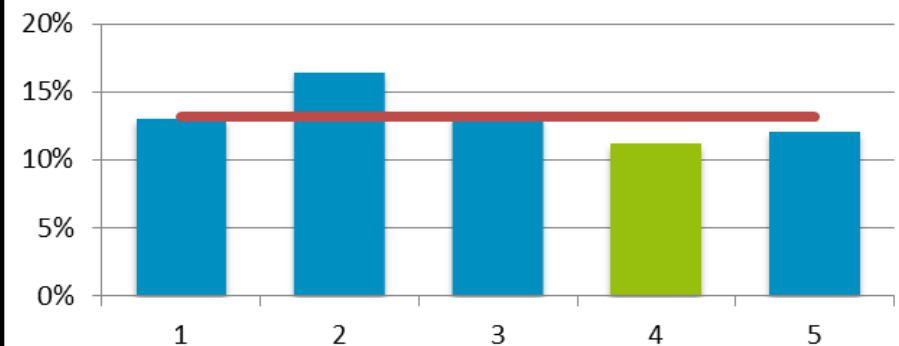
Locality 4 has the second lowest number of Under 18 alcohol specific hospital stays with 7 hospital stays identified.

The average number of Under 18 alcohol specific hospital stays across all localities was 10.

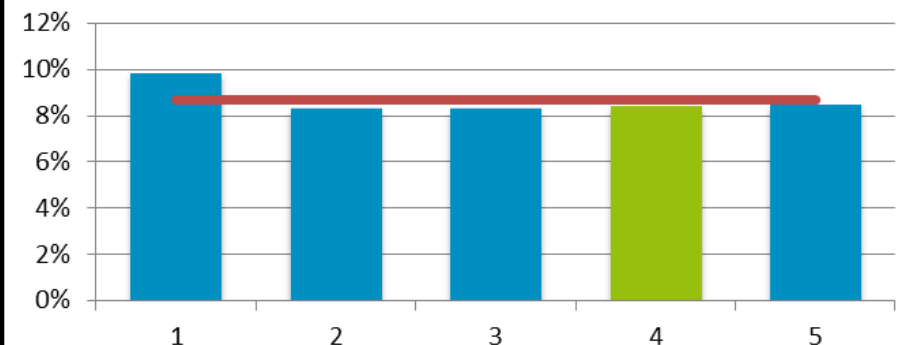
Child Obesity (Reception)



Rate of Overweight Children in Reception by Locality



Rate of Obese Children in Reception by Locality



Overview

Locality 4 has the lowest rate of overweight and obese children in reception when compared to other localities in the borough. The highest concentration in locality 4 is

Westleigh East.

Wigan Council is in the second quartile for performance for rates of child obesity in reception when compared with statistical neighbours

4th

3rd

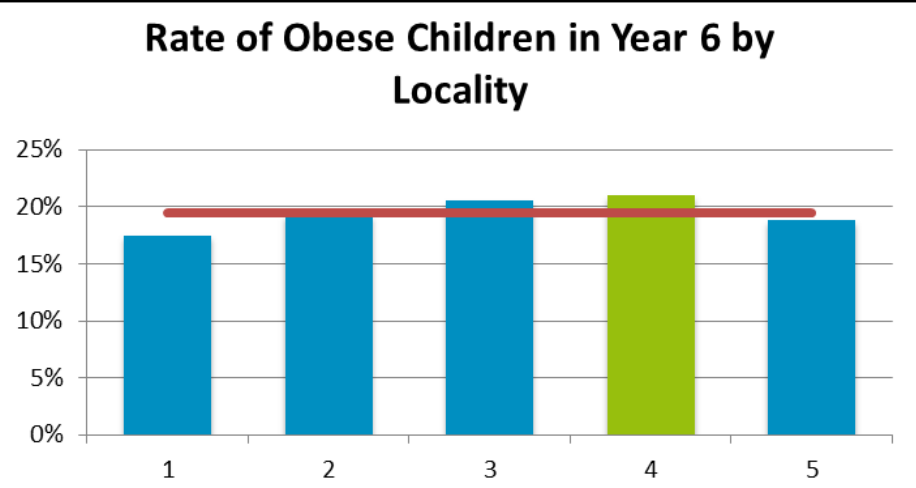
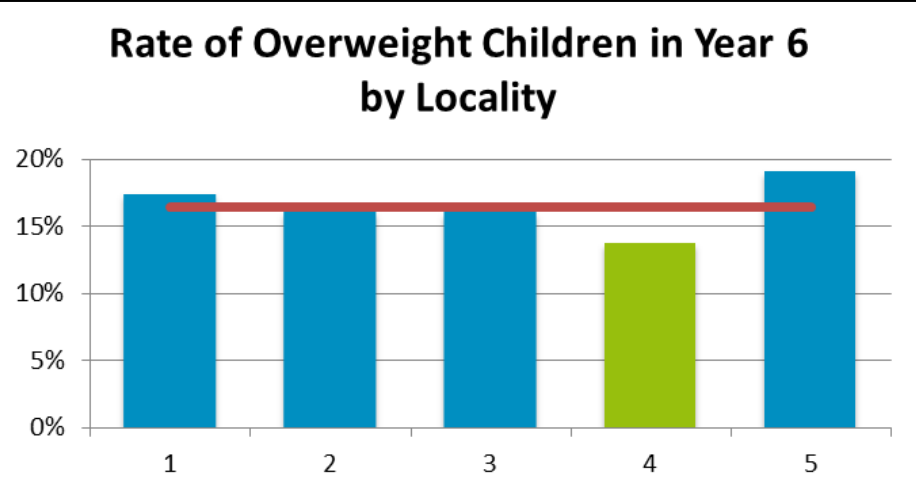
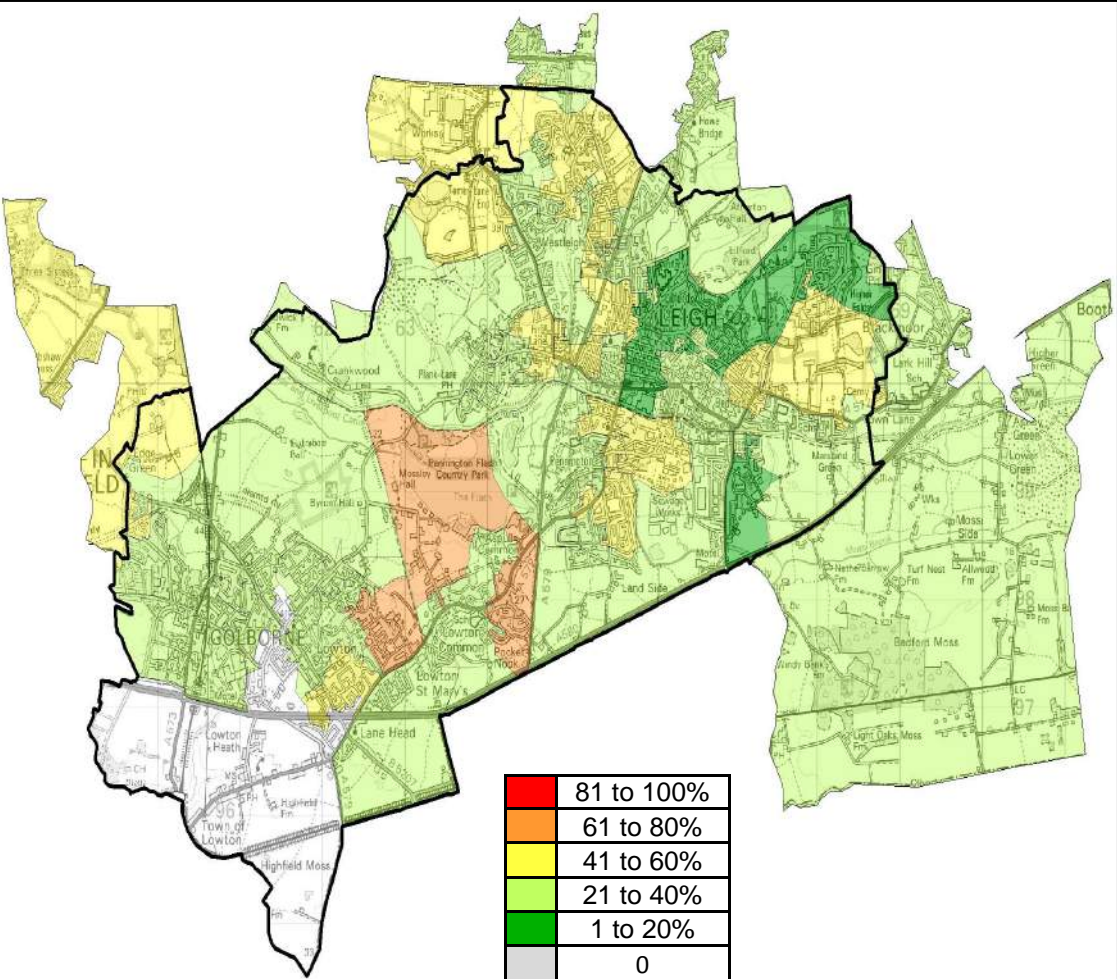
2nd

1st

Locality Rank: 5th

Highest Concentration: Westleigh East

Child Obesity (Year 6)



Overview

Locality 4 has the joint third most overweight and obese children in Year 6 along with localities 2 and 1. However, Locality 4 has the joint worst rate of childhood obesity with 21% . Braithwaite Road is the worst affected area for child obesity in year 6.

Wigan Council is in the second quartile for performance for rates of child obesity in year 6 when compared with national averages

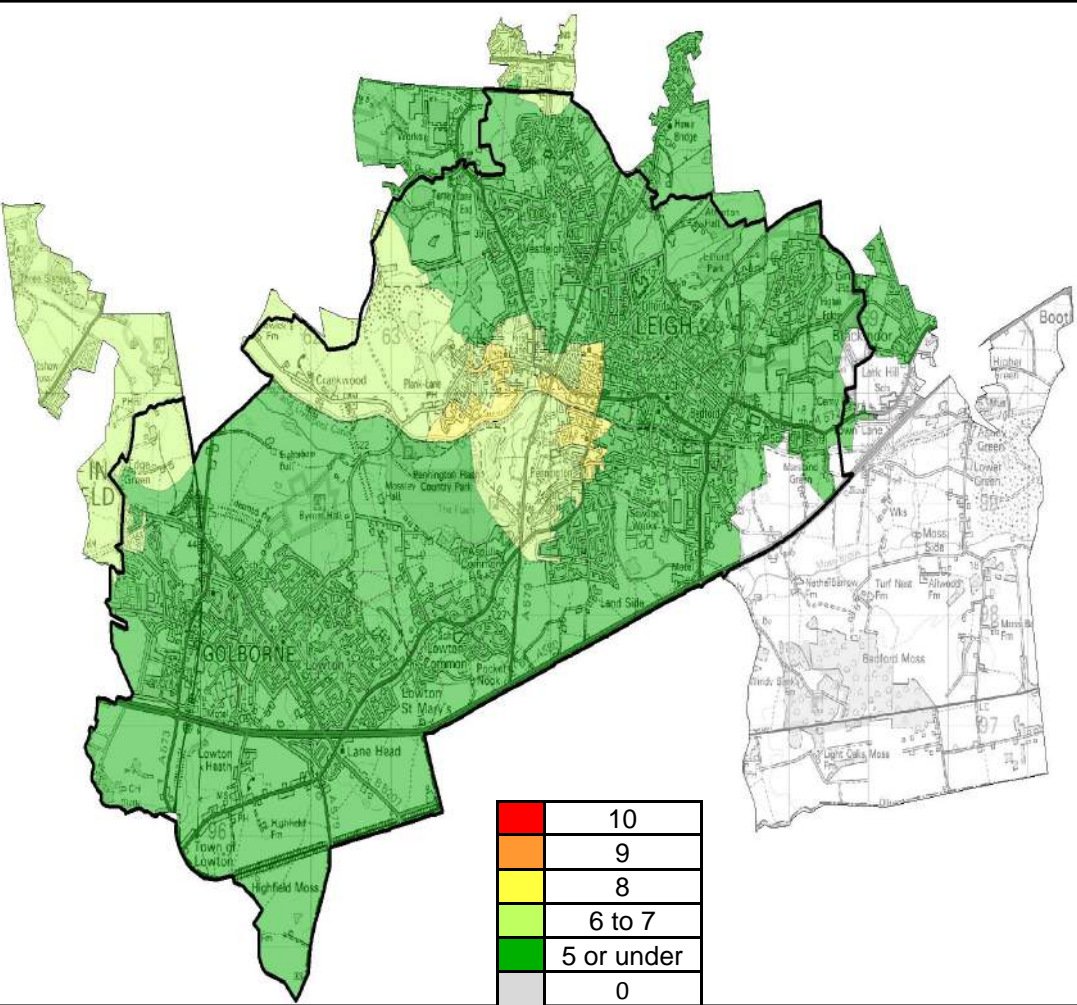
| | | | |
|-----|-----|-----|-----|
| 4th | 3rd | 2nd | 1st |
|-----|-----|-----|-----|

Locality Rank: 3rd*

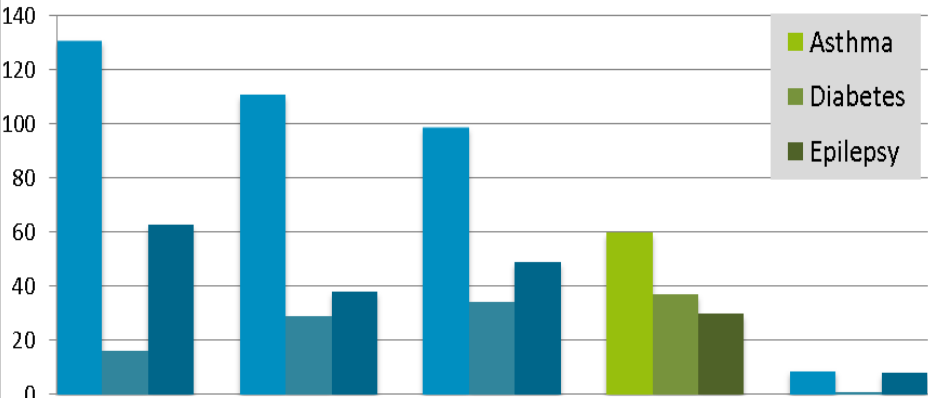
Highest Concentration:

Braithwaite Road

Non-Elective Admissions of Children with a Long-term Condition



Non-Elective Admissions of Children with a Long Term Condition by Locality



Overview

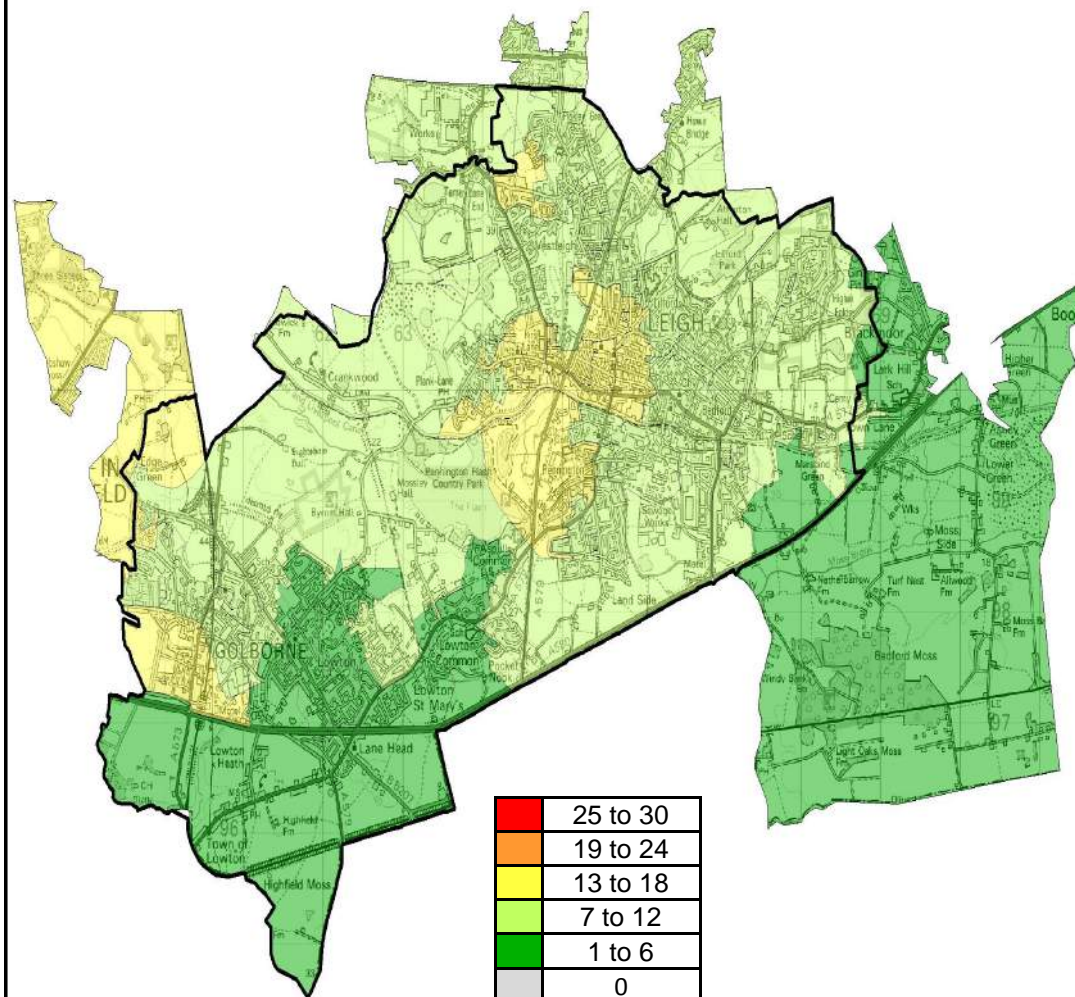
Locality 4 has the second lowest number of identified Non-Elective Admissions of Children with a Long Term condition of all Wigan Council's localities with 127 identified.

Etherstone/ Diamond Street, Plank Lane/ Firs Lane and Railway Road/ Twist Lane has the highest concentration of Non-Elective Admissions of Children with a Long Term condition within locality 4.

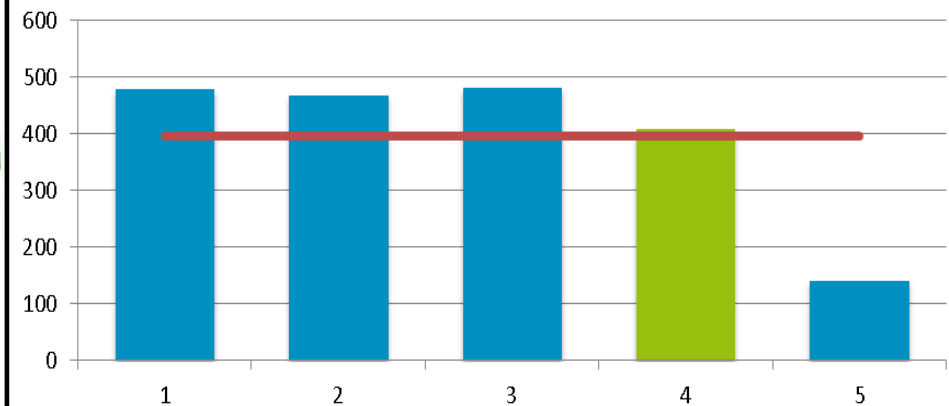
The average number of identified Non-Elective Admissions of Children with a Long Term condition of all Wigan Council's localities was 143 admissions.

Locality Rank: 4th
Highest Concentration: 3 LSOAs

Non-elective Admissions for Under 5s



Number of Non-Elective Admissions for Under 5s by Locality



Overview

Locality 4 had the second lowest number of non-elective admissions for under 5s between April 13 and February 14 of all Wigan Council's localities with 410 admissions.

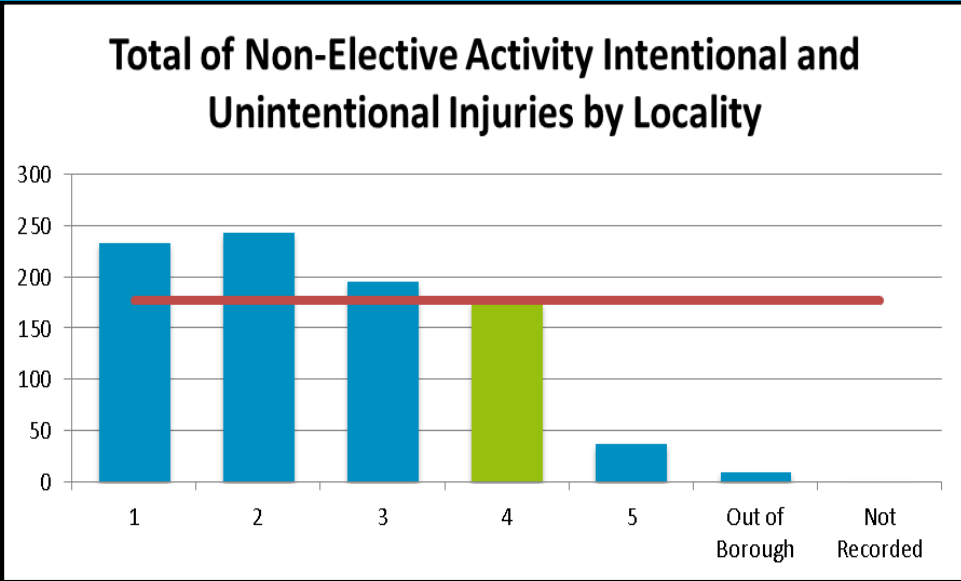
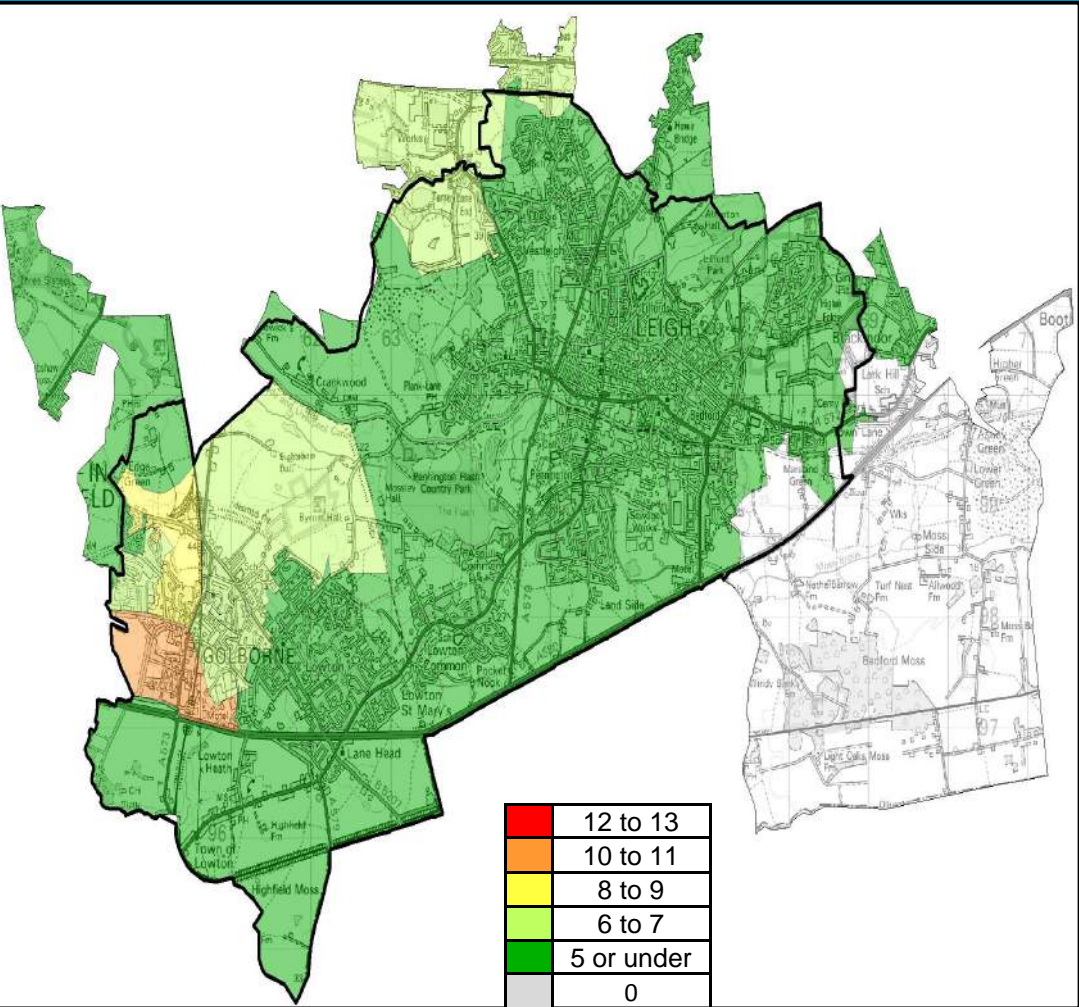
The areas with the highest number of admissions are closer to Wigan Hospital. Areas further away from the centre may visit other hospitals.

The average number of admissions across all of the Borough's Localities is 396.

Locality Rank: 4th

Highest Concentration: Leigh Centre

Non-elective Activity for Intentional and Unintentional Injuries



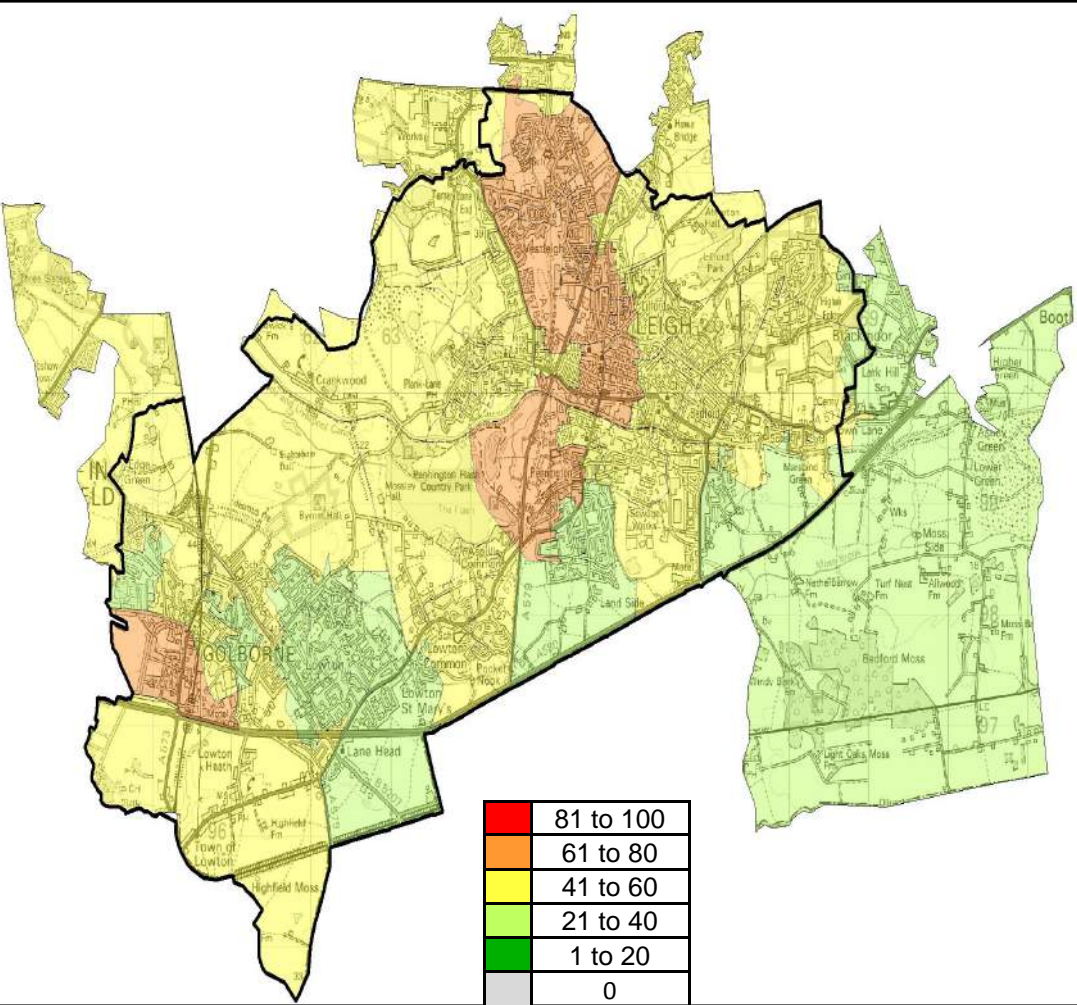
Overview

Locality 4 has the second lowest number of Non-Elective activity intentional and unintentional injuries with 175 injuries. The highest concentration is Golborne South with 10 injuries .

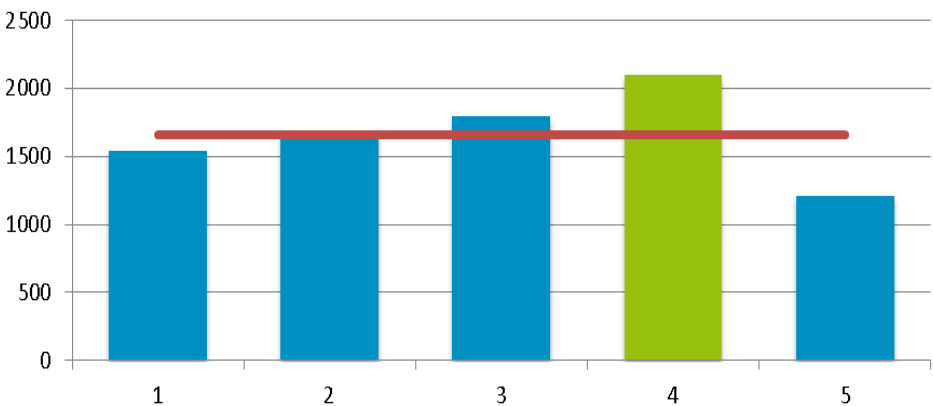
The average number of Non-Elective activity intentional and unintentional injuries across all localities is 177.

Locality Rank: 4th
Highest Concentration: Golborne South

Outpatient Appointments for Under 5s



Number of Outpatient Appointments for Under 5s by Locality



Overview

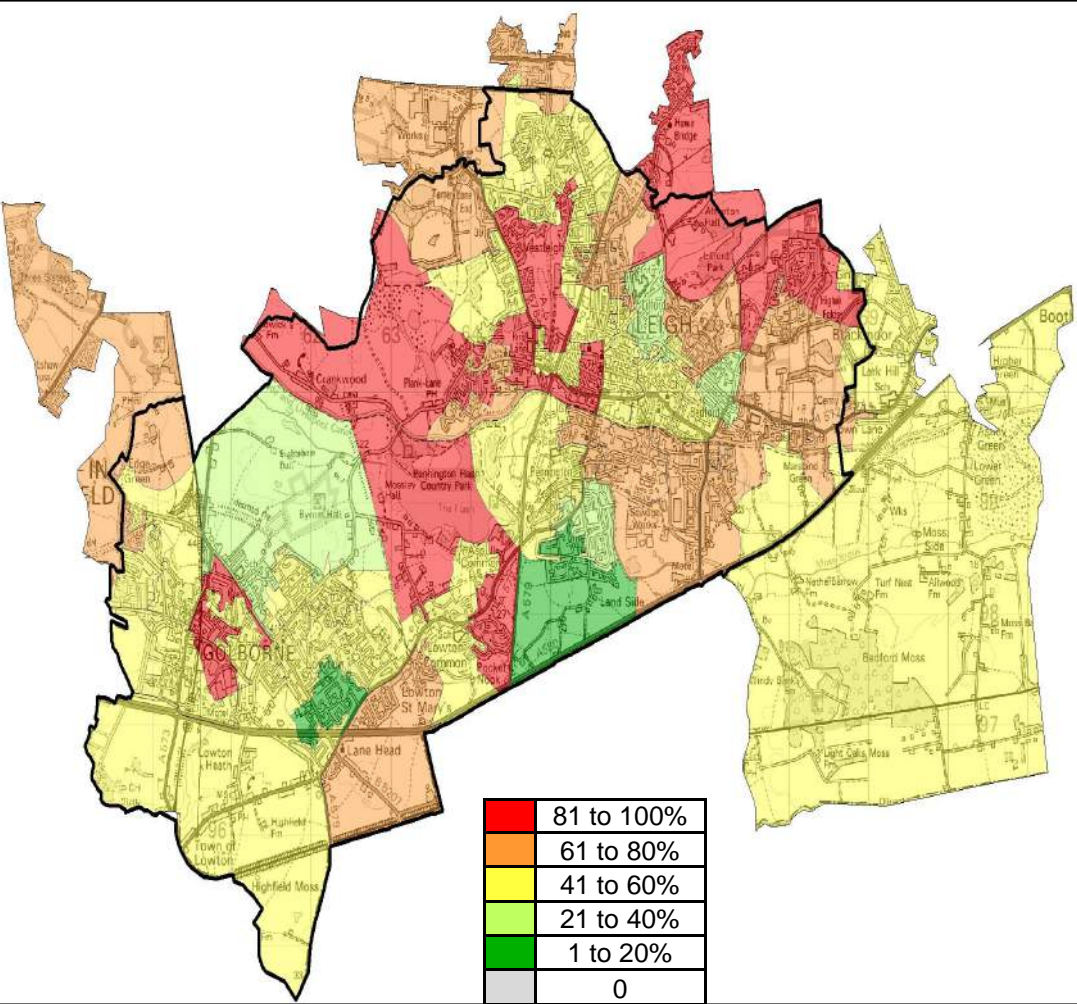
Locality 4 has the highest number of Outpatient Appointments for Under 5s with 2093 children identified. The highest concentration of Outpatient Appointments for Under 5s is Leigh Centre with 78 children.

The second highest areas for Outpatient Appointments for Under 5s is Hilton Park with 76, followed by Pennington West and Cavendish with 67 children identified respectively.

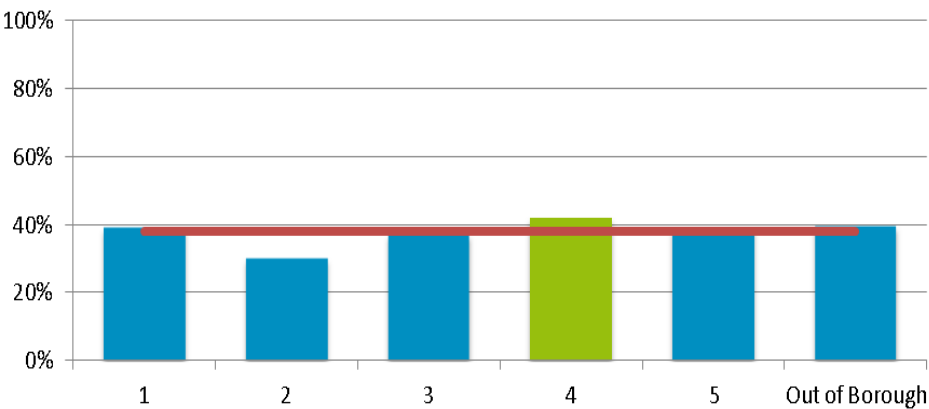
The average number of Outpatient Appointments for Under 5s across all localities is 1662.

Locality Rank: 1st
Highest Concentration: Leigh Centre

EYFSP—Children Showing a Good Level of Development



Rate of Children Showing a Good Level of Development at EYFSP by Locality



Overview

Locality 4 has the highest rate of children showing a good level of development at EYFSP by locality with 42% comparable to the borough average of 38%. Higher Folds North has the lowest concentration of children showing a good level of development at EYFSP within locality 4.

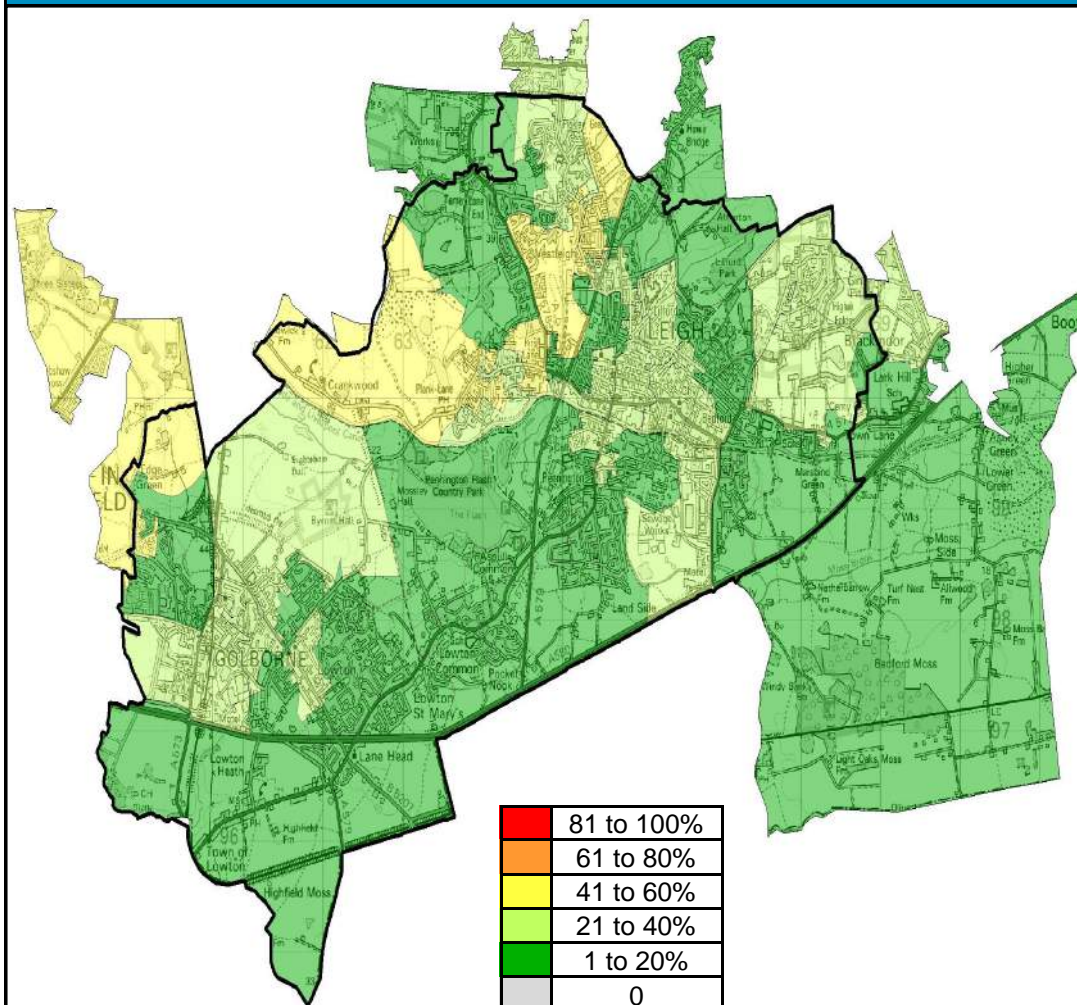
Lakeside/ Firs Lane, Railway Road/ Twist Lane and St Helens Road East are also areas for concern with less than 20% of children showing a good level of development in Early Years.

Wigan Council is in the bottom quartile for performance for rates of Children showing a good level of development when compared with statistical neighbours

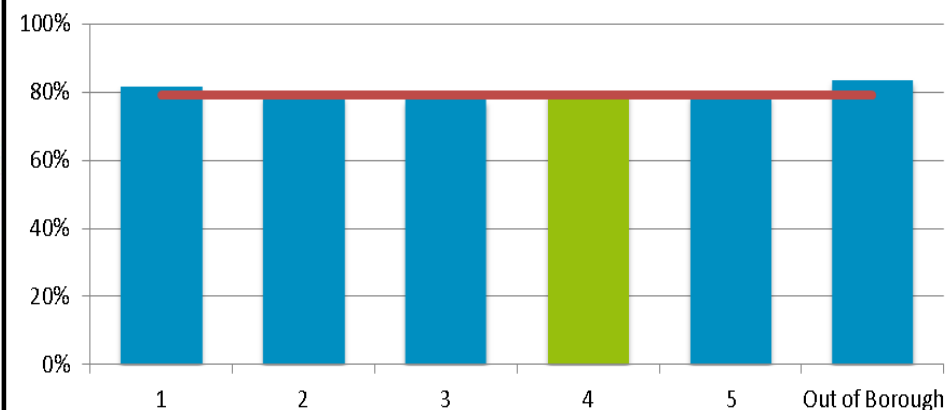
| | | | |
|-----|-----|-----|-----|
| 4th | 3rd | 2nd | 1st |
|-----|-----|-----|-----|

Locality Rank: 1st
Lowest Concentration: Higher Folds North

Attainment at Key Stage 2



Rate of Children Achieving Level 4 Reading, Writing and Maths at KS2 by Locality



Overview

Locality 4 has the second highest rate of children achieving level 4 in Reading, Writing and Mathematics at key stage 2 with 80%. The lowest concentration within locality 4 is Westleigh East .

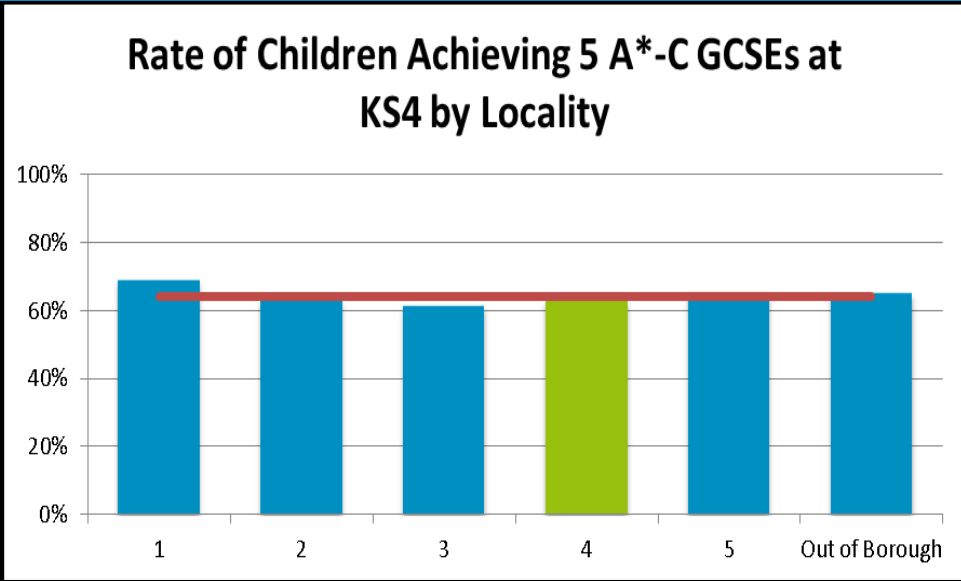
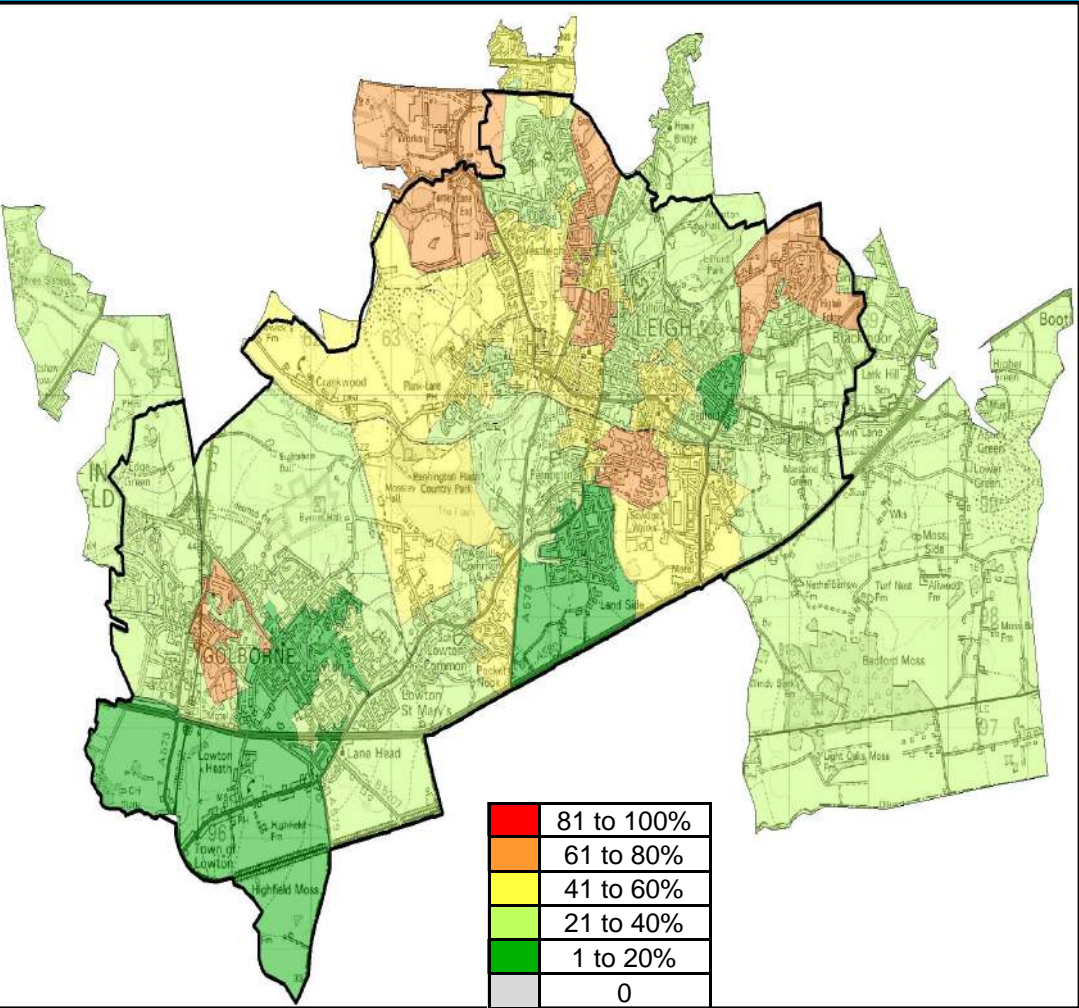
The average across all localities is 79%.

Wigan Council is in the top quartile for performance for attainment at KS2 when compared with statistical neighbours

| | | | |
|-----|-----|-----|-----|
| 4th | 3rd | 2nd | 1st |
|-----|-----|-----|-----|

Locality Rank: 4th
Lowest Concentration: Westleigh East

Attainment at Key Stage 4



Overview

Locality 4 has the second lowest rate of children achieving 5A*-C GCSEs at KS4 by locality with 63%. The lowest concentration within locality 4 is Derby Road Estate West with 31%.

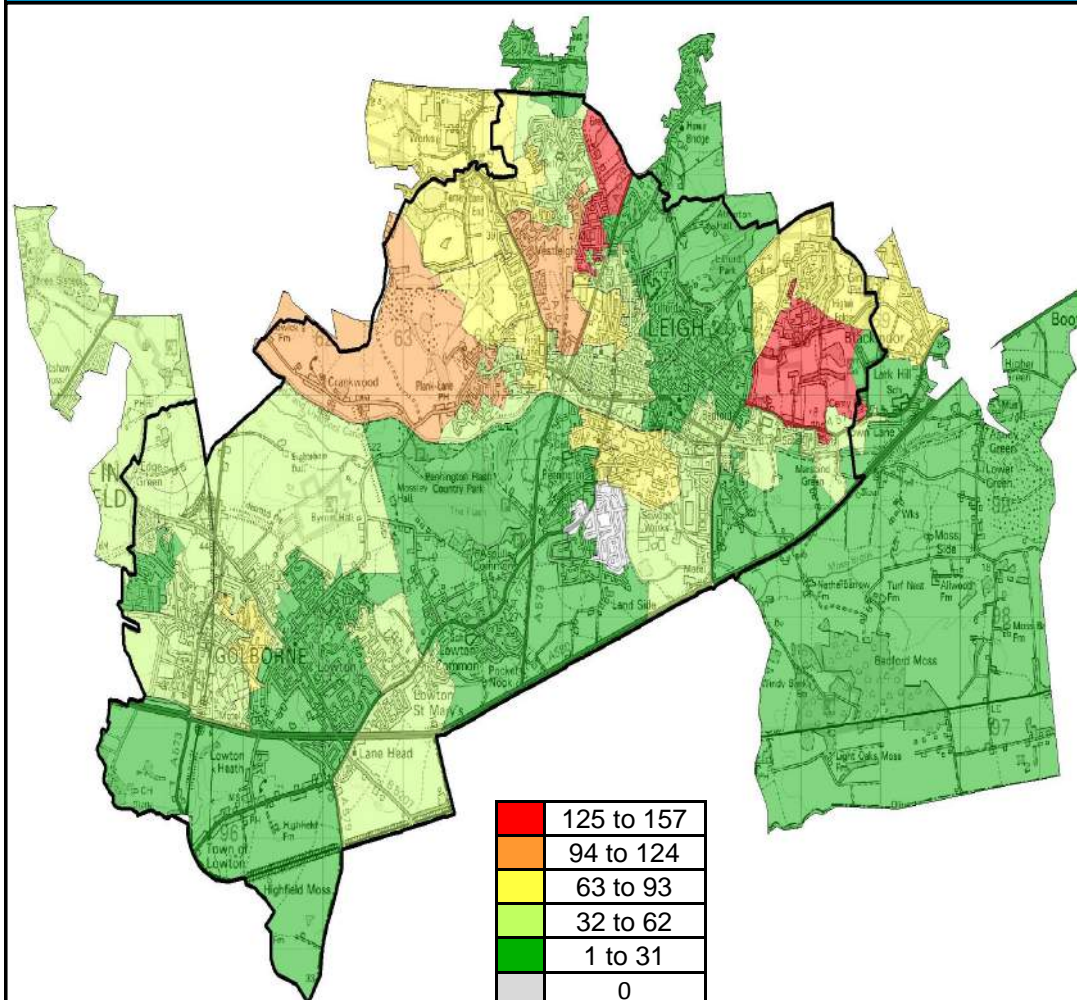
The average across all localities is 64%.

Wigan Council is in the first quartile for rates of attainment at KS4 when compared with statistical neighbours.

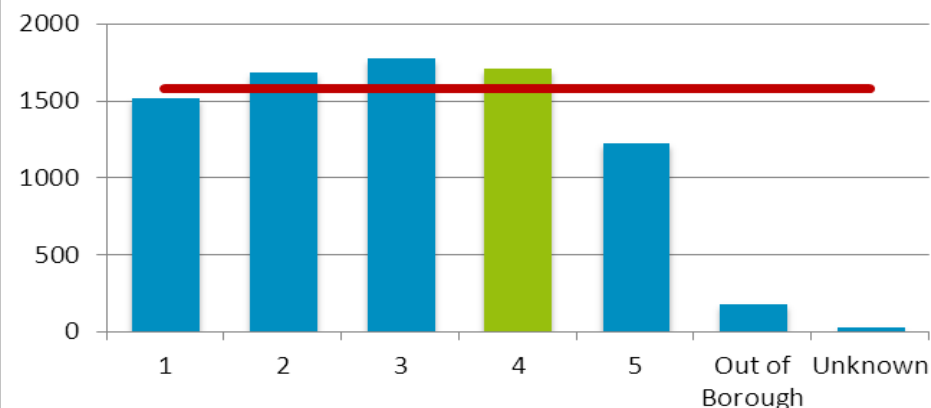
| | | | |
|-----|-----|-----|-----|
| 4th | 3rd | 2nd | 1st |
|-----|-----|-----|-----|

Locality Rank: 2nd
Lowest Concentration: Derby Road Estate West

Eligibility for Free School Meals



Number of Children Eligible for Free School Meals by Locality



Overview

Locality 4 has the second highest number of children that are eligible for free school meals with 1710 eligible as at January 2014.

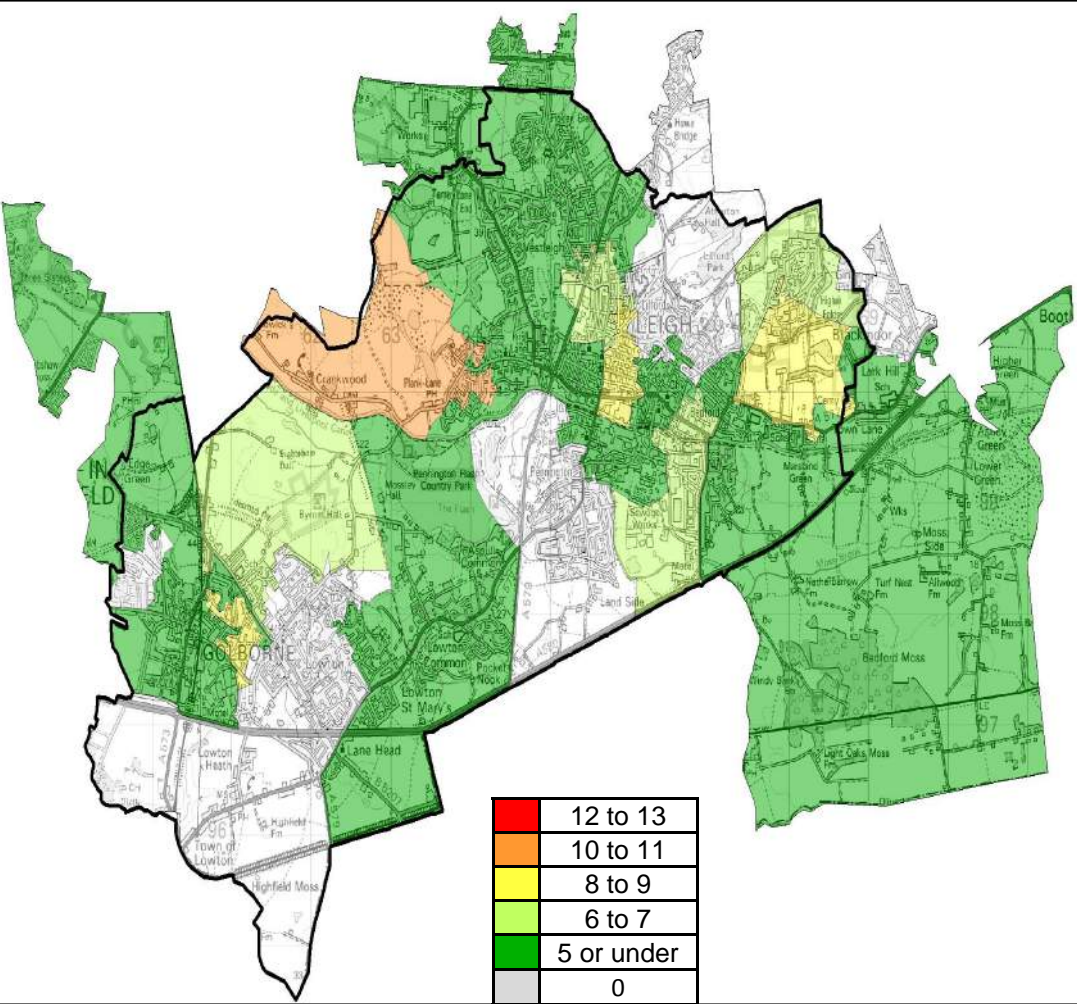
Higher Folds South has the highest concentration of eligible children with 135 children eligible for free school meals followed by Westleigh East with 127 children.

The Locality average is 1579 eligible children.

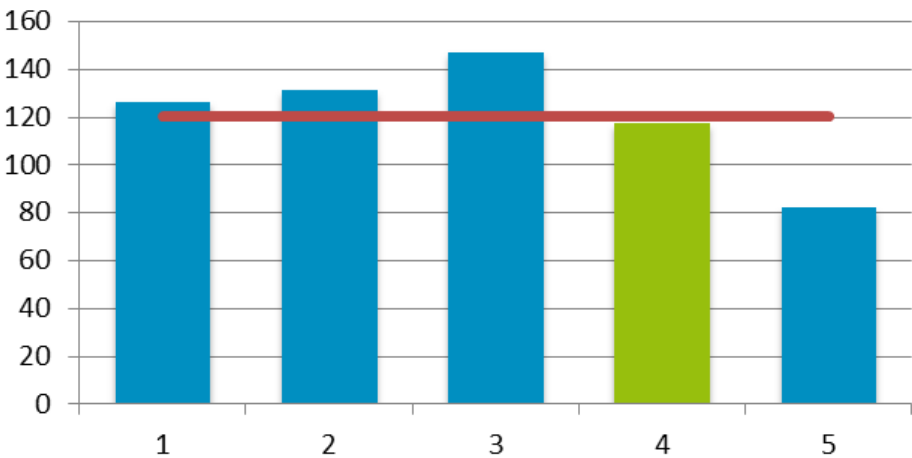
Locality Rank: 2nd

Highest Concentration: Higher Folds South

NEET (16-18)



Number of NEET 16-18 by Locality



Overview

Locality 4 has the second lowest number of identified NEET 16-18 year olds of all Wigan Council’s localities with 117 identified.

Plank Lane / Crankwood has the highest number of NEET in locality 4 with 11.

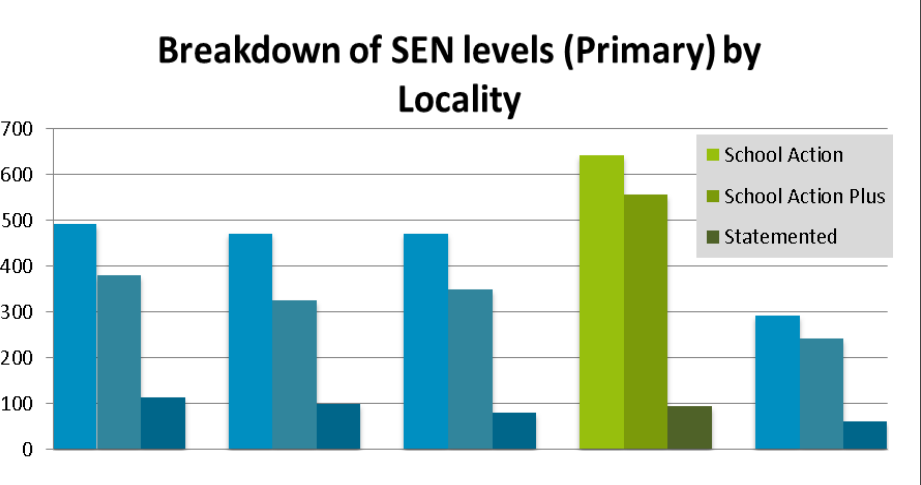
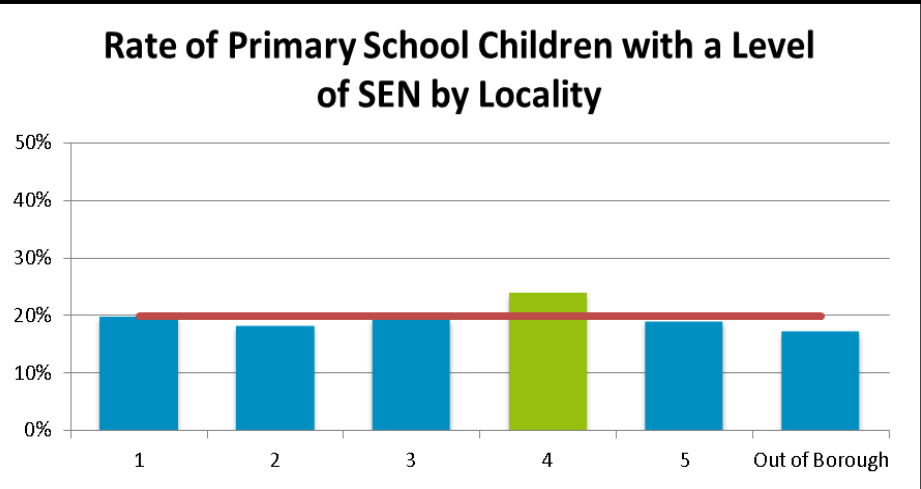
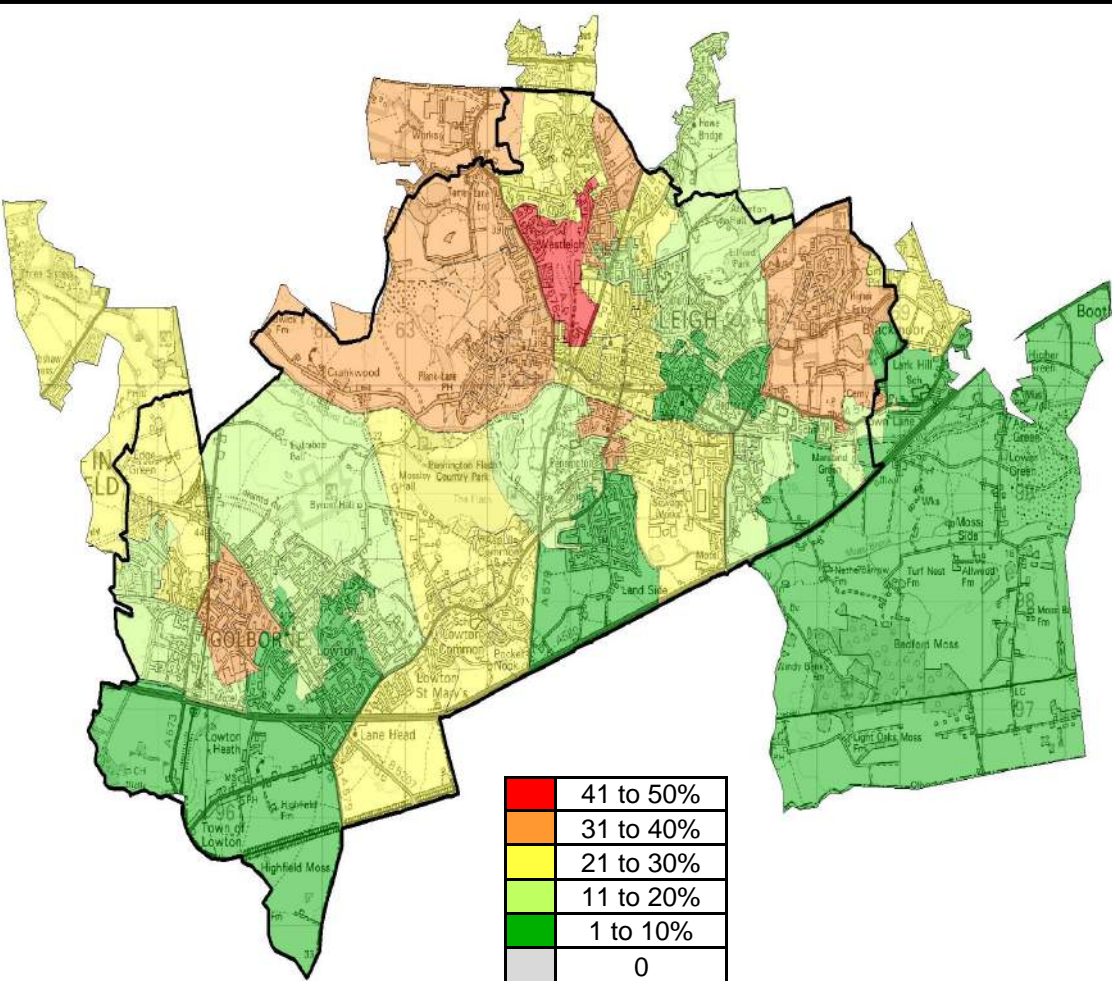
The average across the borough is 121.

Wigan Council is in the second quartile for rates of NEET (16-18) when compared with statistical neighbours.

| | | | |
|-----|-----|-----|-----|
| 4th | 3rd | 2nd | 1st |
|-----|-----|-----|-----|

Locality Rank: 4th
Highest Concentration: Plank Lane / Crankwood

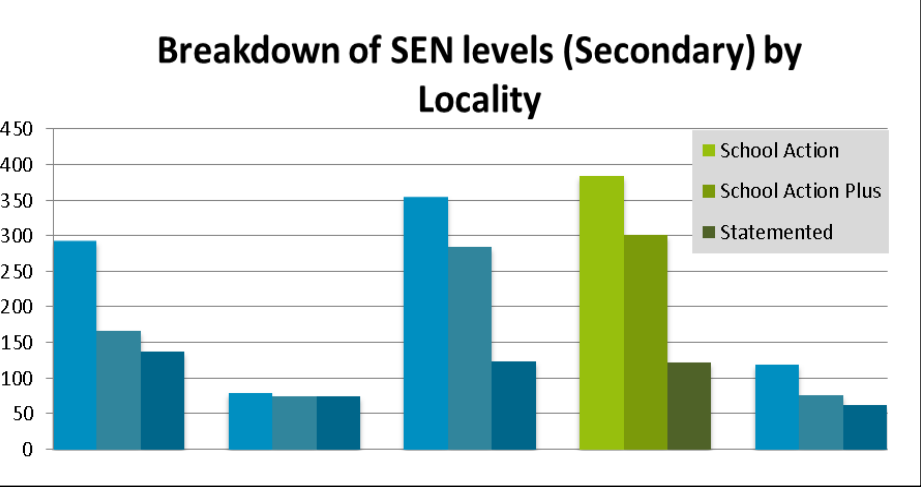
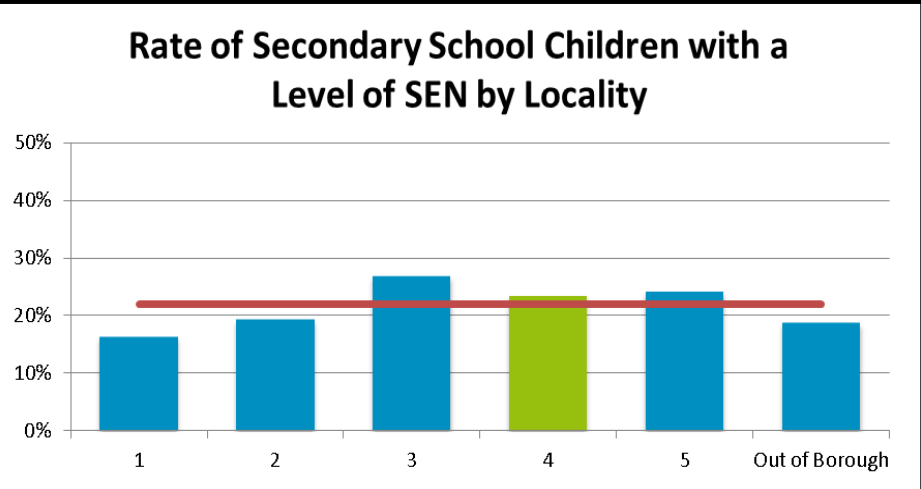
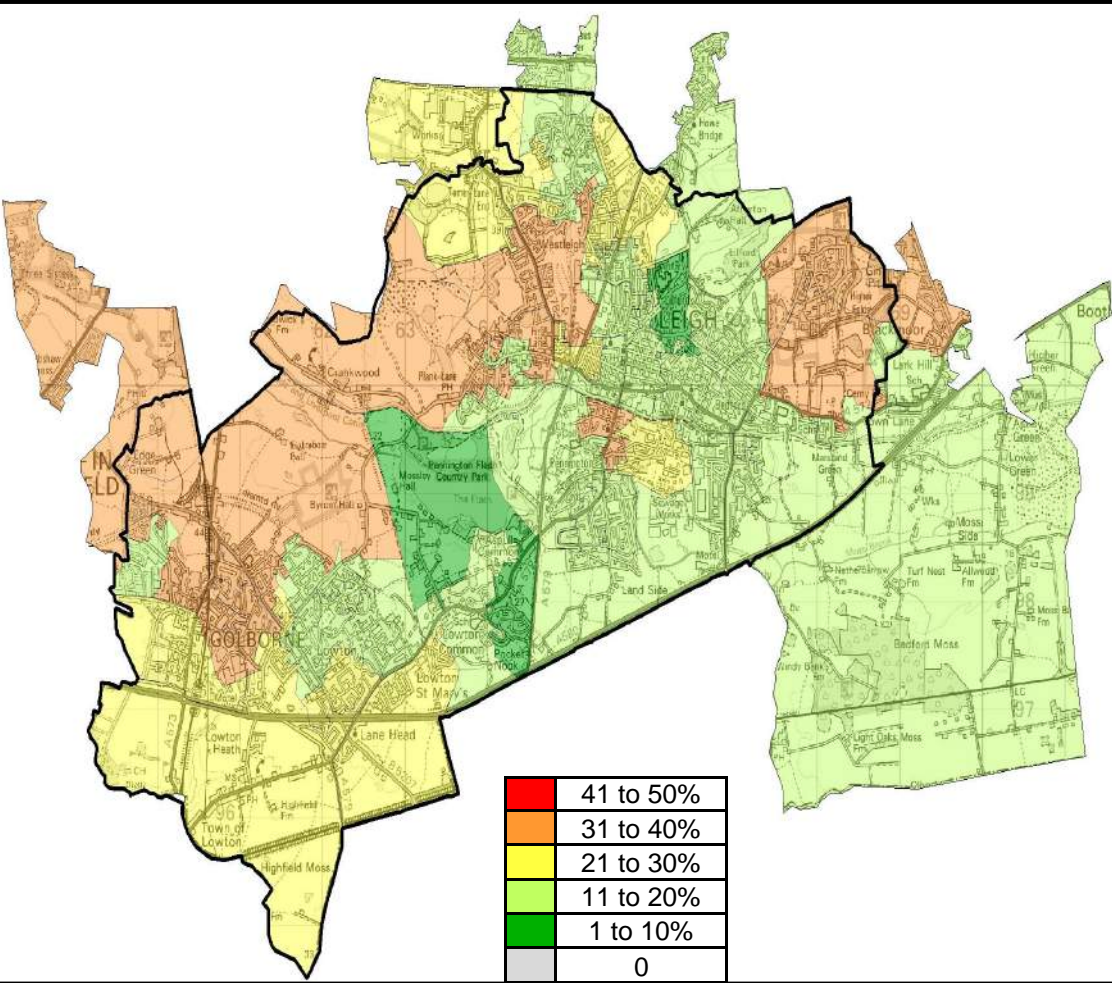
Children with a Level of SEN (Primary)



Overview Locality 4 has the highest overall rate of children with a level of SEN within all of the localities with a rate of 24%. Westleigh West has the highest concentration of children with a level of SEN in Locality 4 with nearly 44% while Higher Folds North and Lakeside/ Firs Lane also has a high rate of SEN. The borough average is 20% per locality.

Locality Rank: 1st
Highest Concentration:
Westleigh West

Children with a Level of SEN (Secondary)



Overview Locality 4 has the third highest overall rate of secondary school children with a level of SEN of all localities with a rate of 23%. Derby Road Estate East has the highest concentration of children with a level of SEN within the locality with a rate of just over 40%.

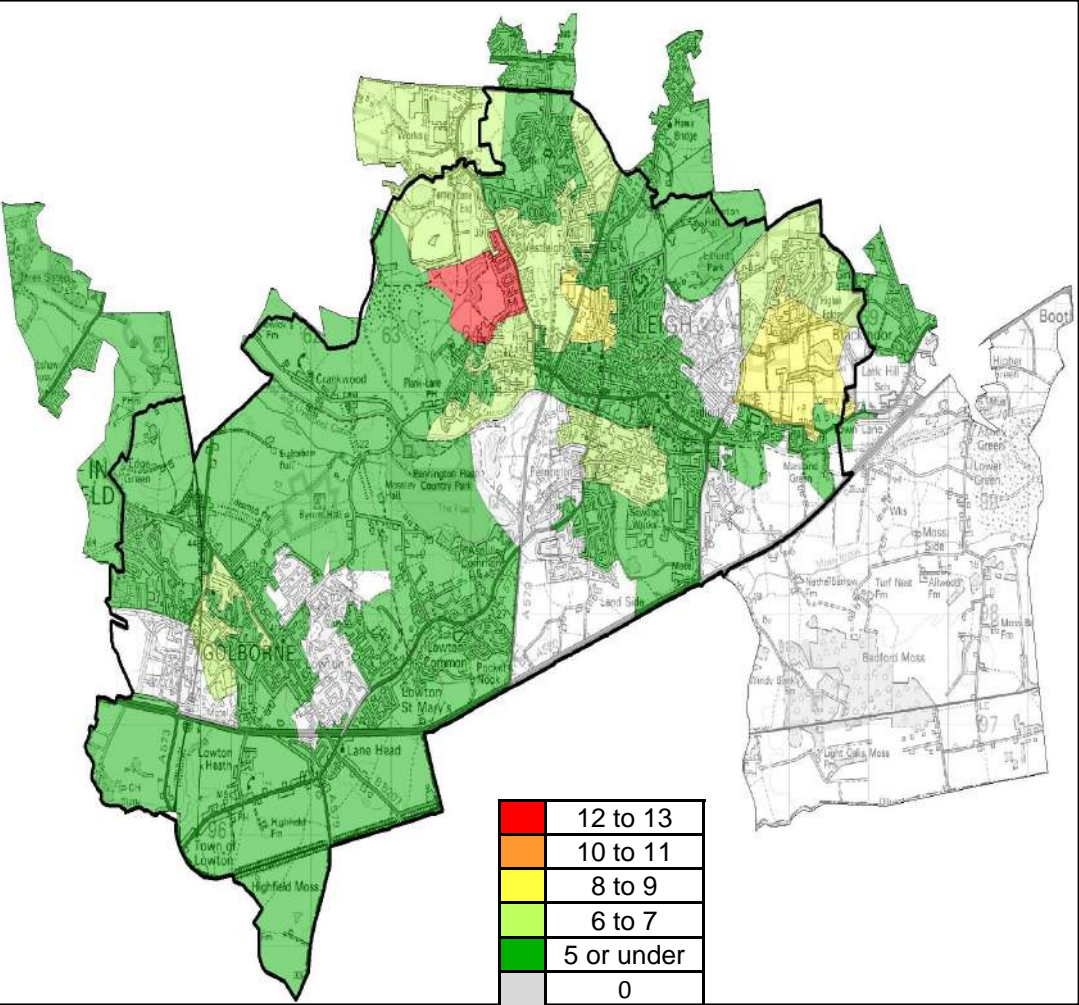
The borough average rate is 22% across all localities.

Locality Rank: 3rd

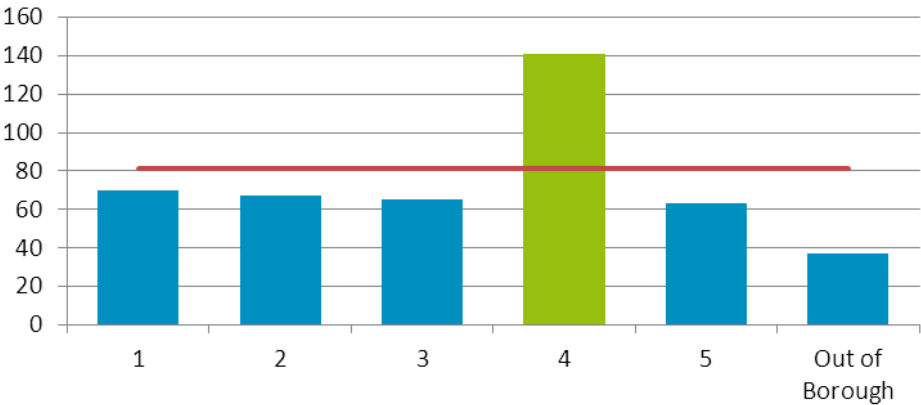
Highest Concentration:

Derby Road Estate East

Children with 15%+ Unauthorised Absence



Number of Children with 15%+ Unauthorised Absence by Locality



Overview

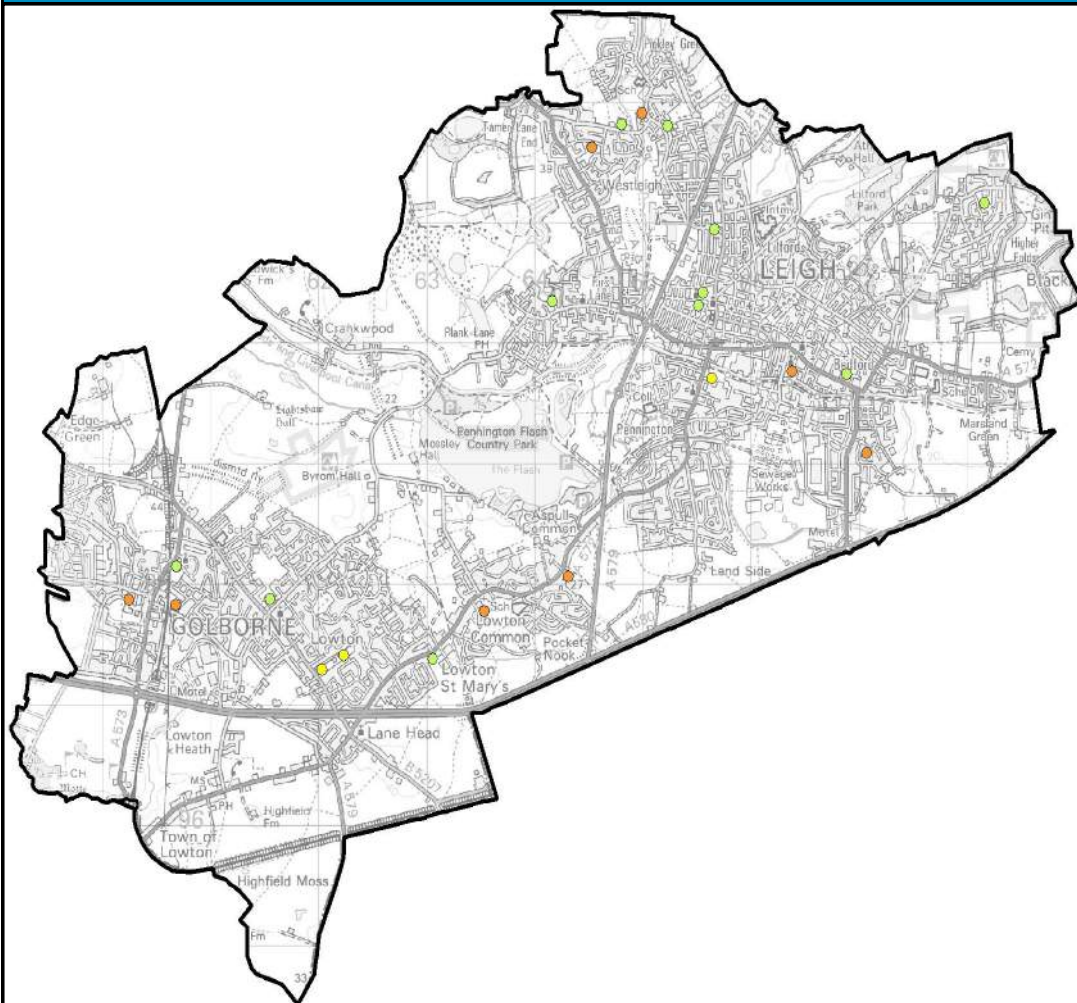
Locality 4 has by far the highest number of children who have a high rate of unauthorised absence.

Wigan Road West has the highest number of children with 15% or greater unauthorised attendance.

Locality Rank: 1st

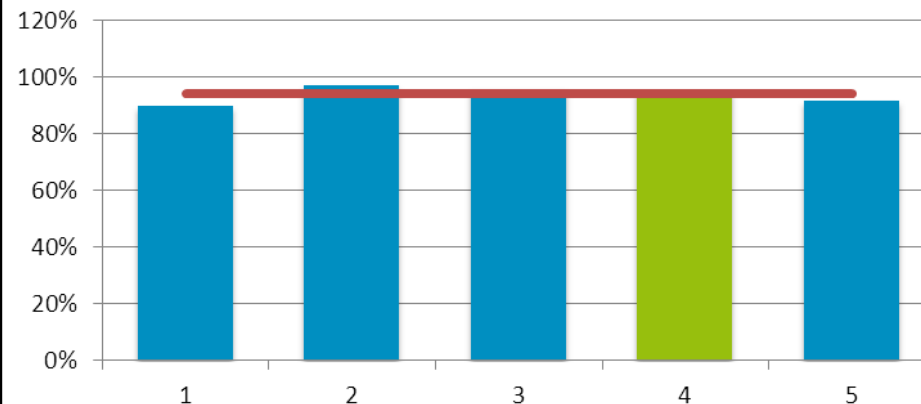
Highest Concentration: Wigan Road West

Demand for School Places (Primary)



Locality Rank: 3rd

Number of 1st Preferences by Available Places in Localities



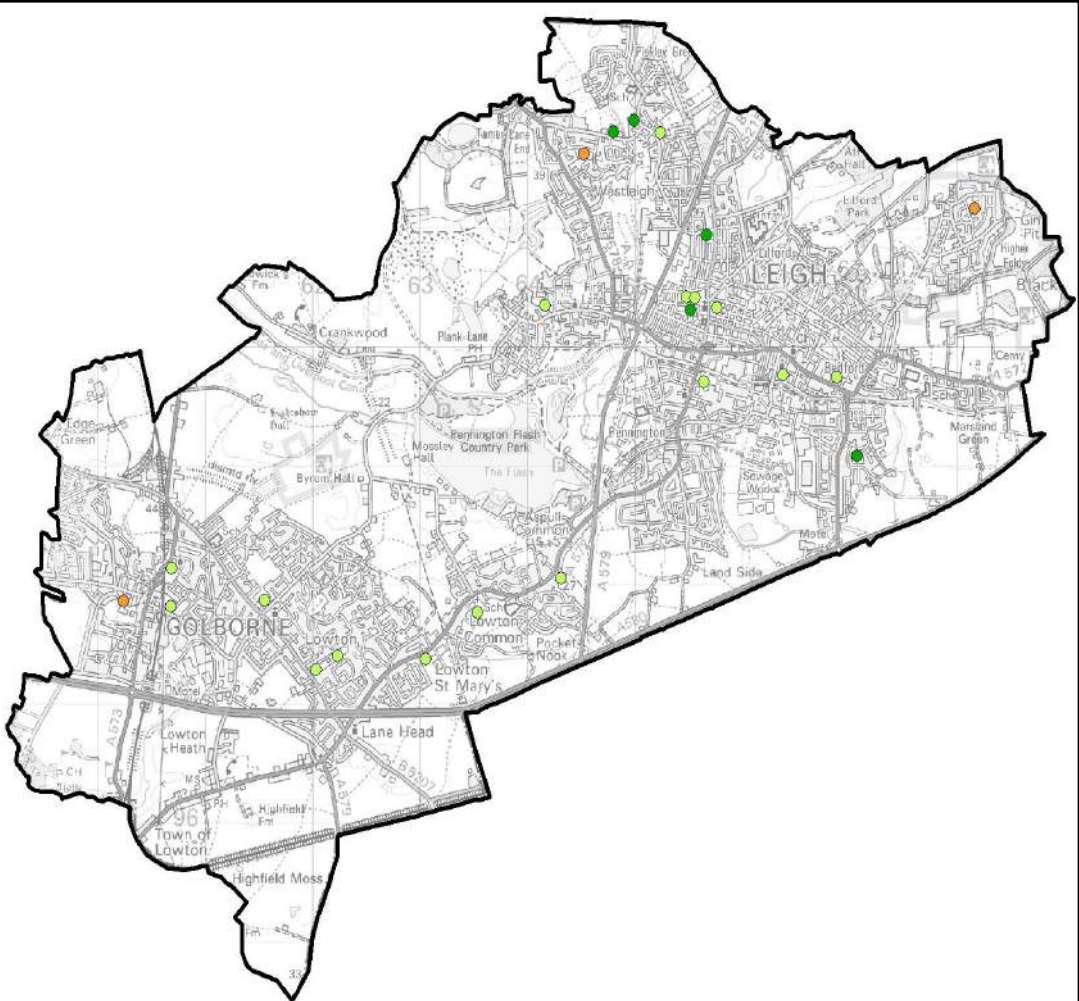
Overview

Locality 4 has the third highest rate of demand for primary school places of all Wigan borough's localities.

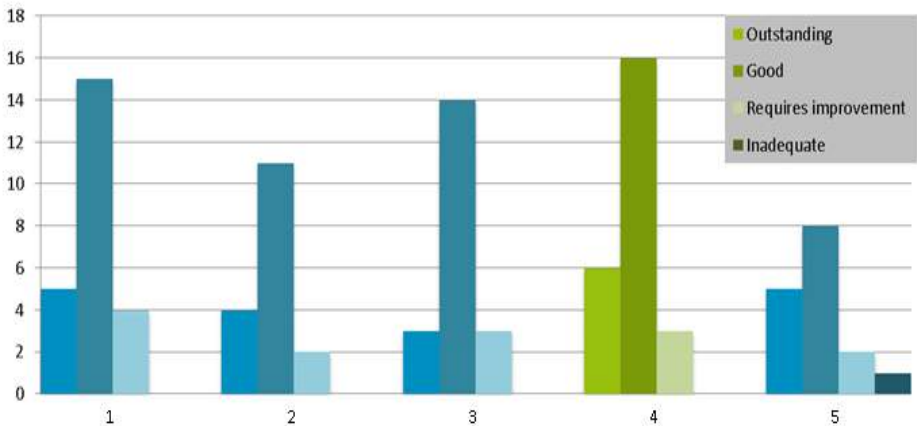
None of Locality 4's primary schools have under 50% first preferences compared to available places. St. Thomas' CE J & I School and St. Gabriel's Catholic Primary School have the lowest rates with 60%

Eight schools have over 100% first preferences compared to available places. Leigh Westleigh Methodist Primary School has the largest percentage with 138%.

School Ofsted Ratings (Primary)



Breakdown of Primary School OFSTED Ratings by Locality

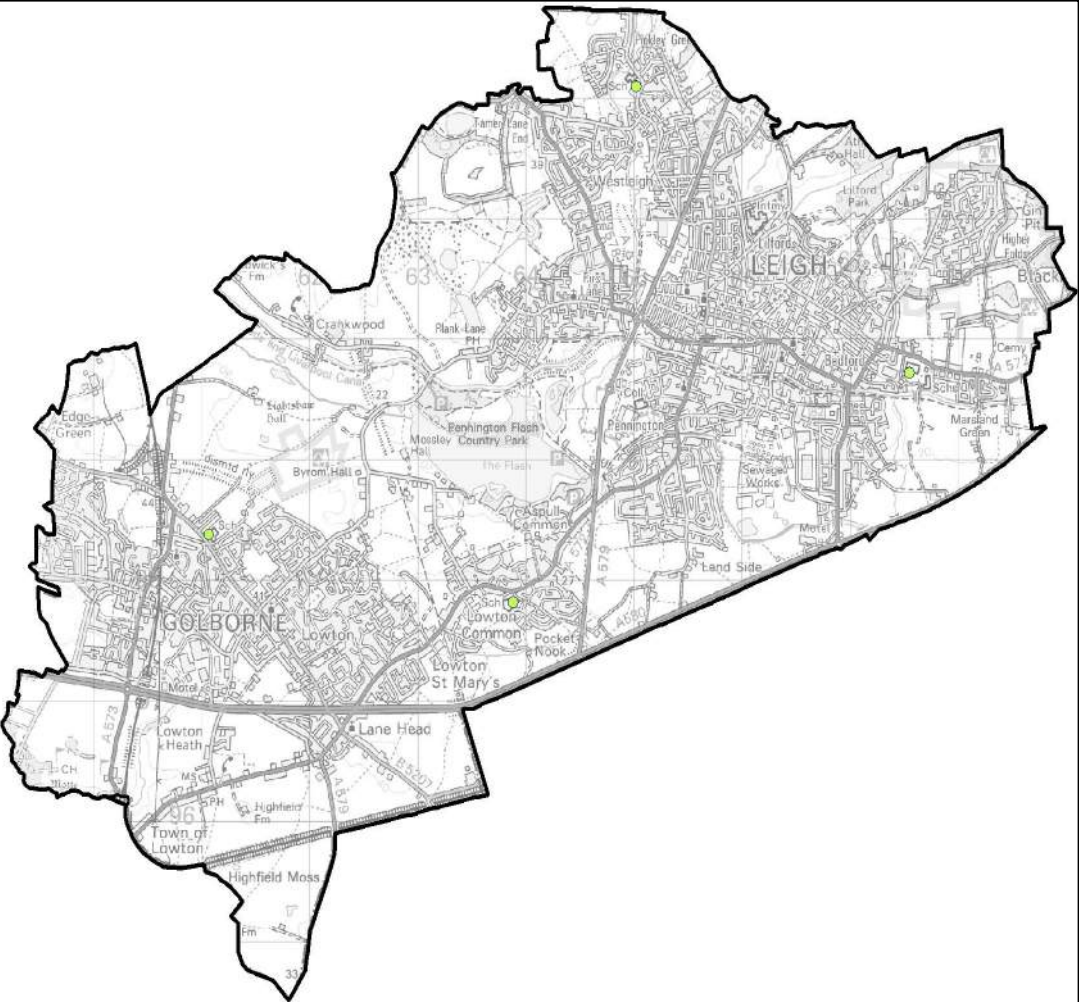


Overview

Locality 4 has 84% of schools rated good or outstanding.

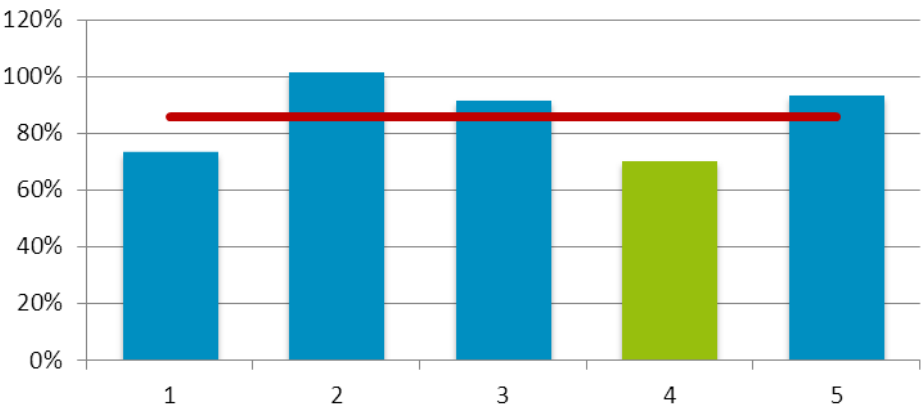
Of the 25 schools in the locality, 6 are rated as outstanding, 16 as good and 3 as requiring improvement.

Demand for School Places (Secondary)



Locality Rank: 1st

Number of 1st Preferences by Available Places in Localities



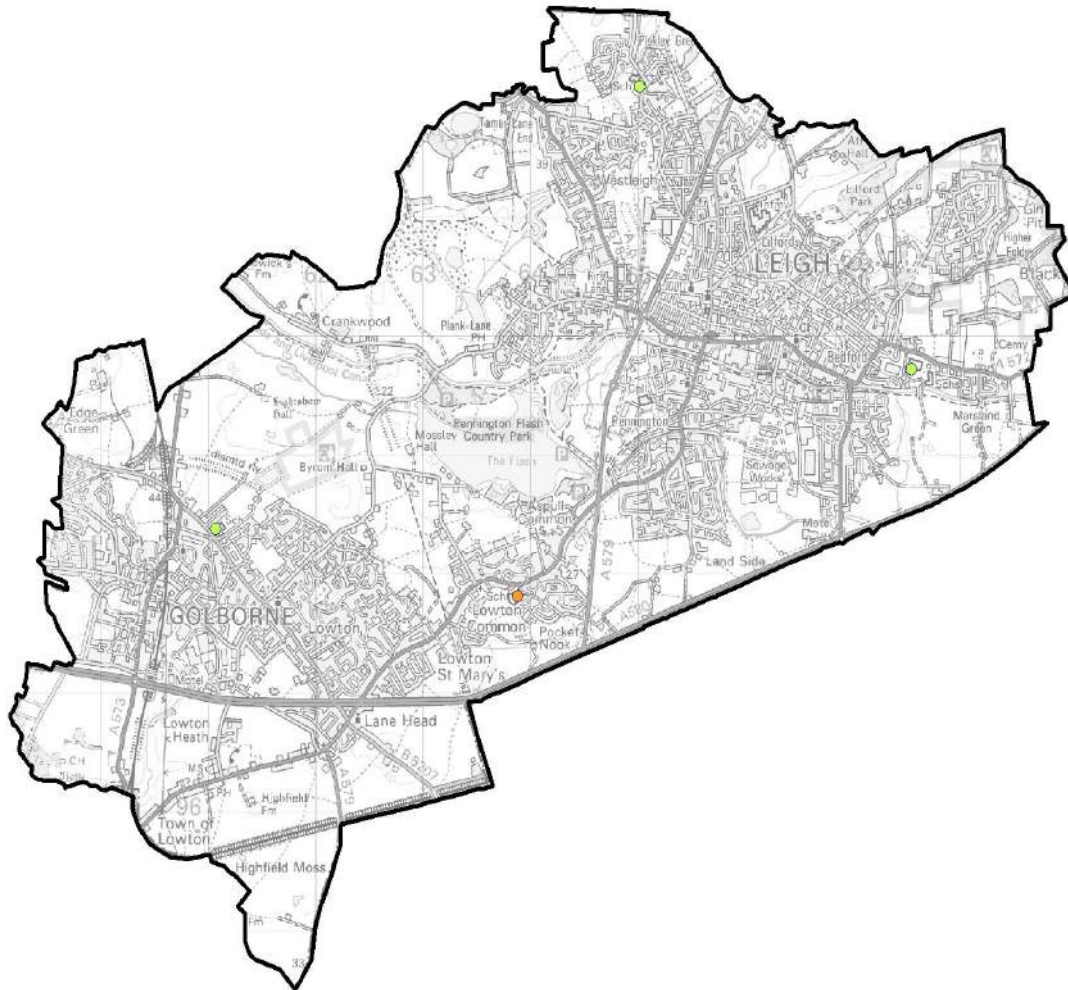
Overview

Locality 4 has the lowest rate of demand for secondary school places of all Wigan borough's localities.

Between Locality 4's four secondary schools, there are 719 admission places available but only 505 children have one of the schools as their first choice, a rate of 71%.

Westleigh High School has the highest rate with 93.6% while Bedford High School has the lowest with 50.4%.

School Ofsted Ratings (Secondary)



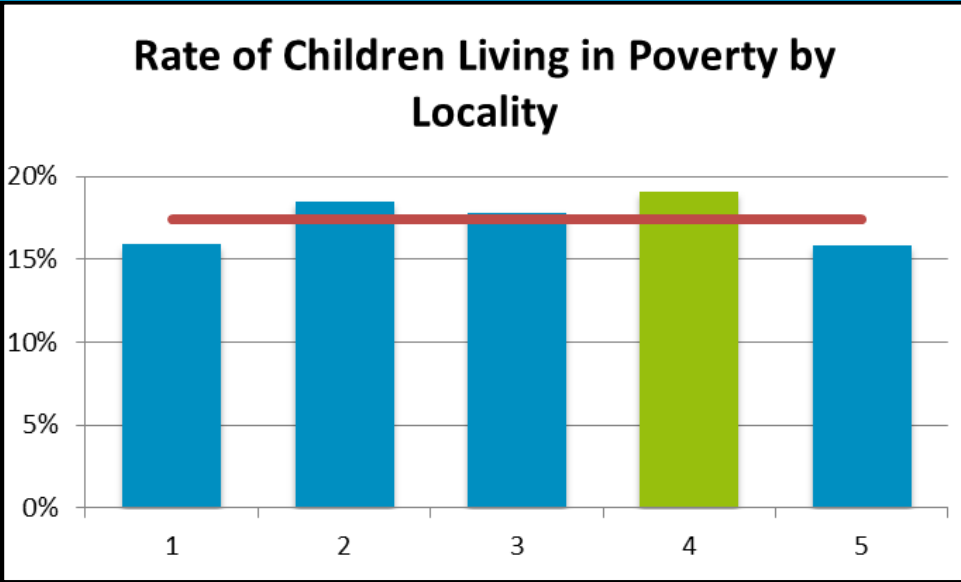
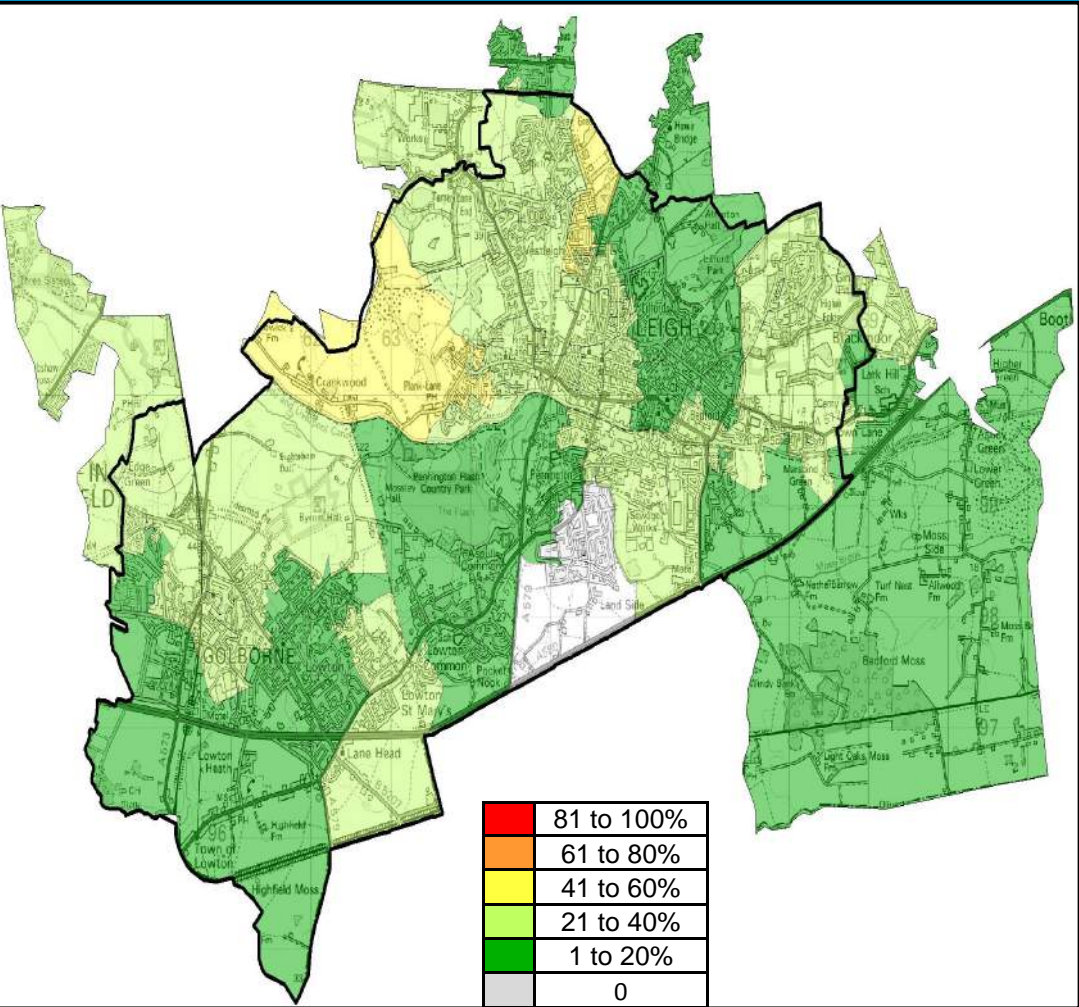
| | Outstanding | Good | Requires Improvement | Inadequate | Total |
|-------------|-------------|------|----------------------|------------|-------|
| Locality 1 | | 4 | 1 | | 5 |
| Locality 2 | 2 | | 1 | | 3 |
| Locality 3 | | 3 | 1 | | 4 |
| Locality 4 | | 3 | 1 | | 4 |
| Locality 5 | 2 | | | | 2 |
| Grand Total | 4 | 10 | 4 | | 18 |

Overview

Locality 4 has 3 schools with OFSTED rating of Good. These are: Bedford High School, Westleigh High School and Golborne High School.

The other school in the locality, The Deanery Church of England High School and Sixth Form College has a rating of Requires Improvement.

Children Living in Poverty



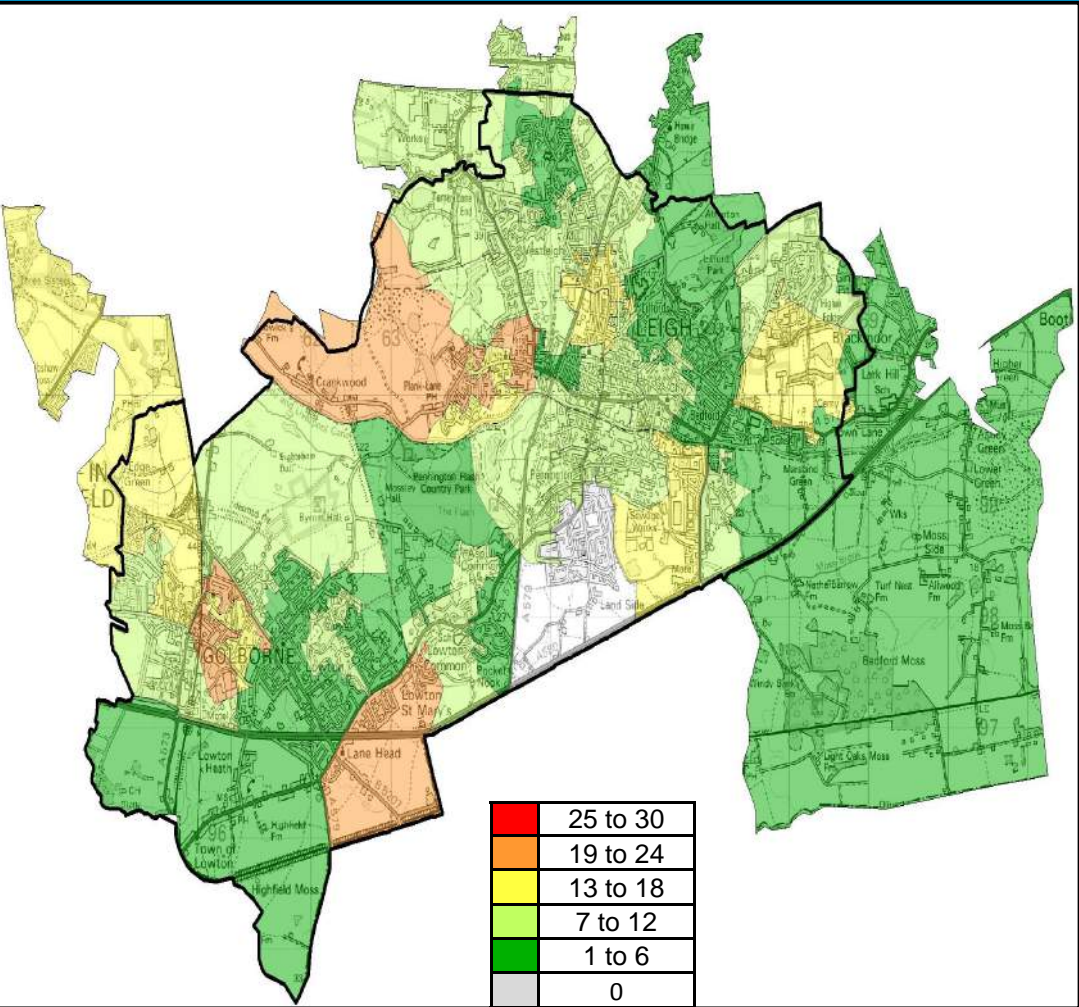
Overview

Locality 4 has the highest rate of children living in poverty of the Borough's localities with 19%. The highest concentration within locality 4 is Westleigh East with just over 48% followed by Westleigh West with nearly 40%.

The average across all localities is 17%.

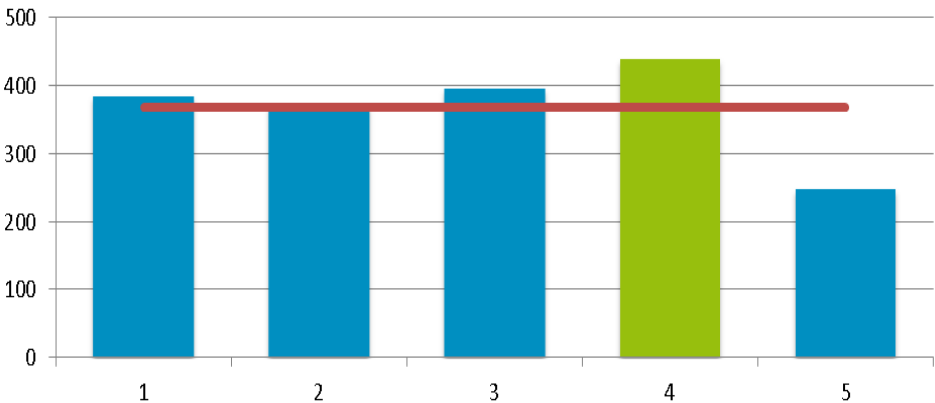
Locality Rank: 1st
Highest Concentration: Westleigh East

Children 0-16 Claiming DLA



Locality Rank: 1st
Highest Concentration: 3 LSOAs

Number of Children Aged 0-16 Claiming DLA by Locality

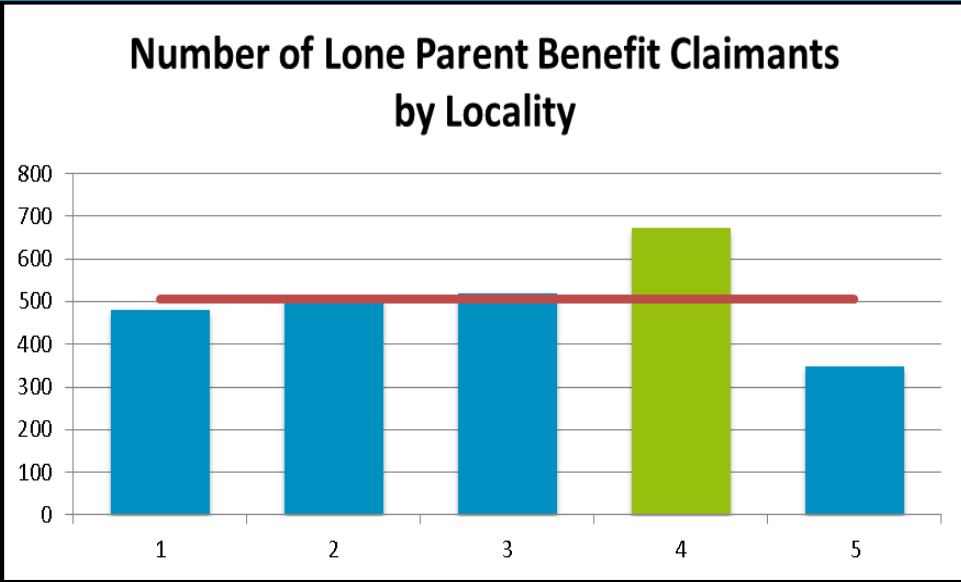
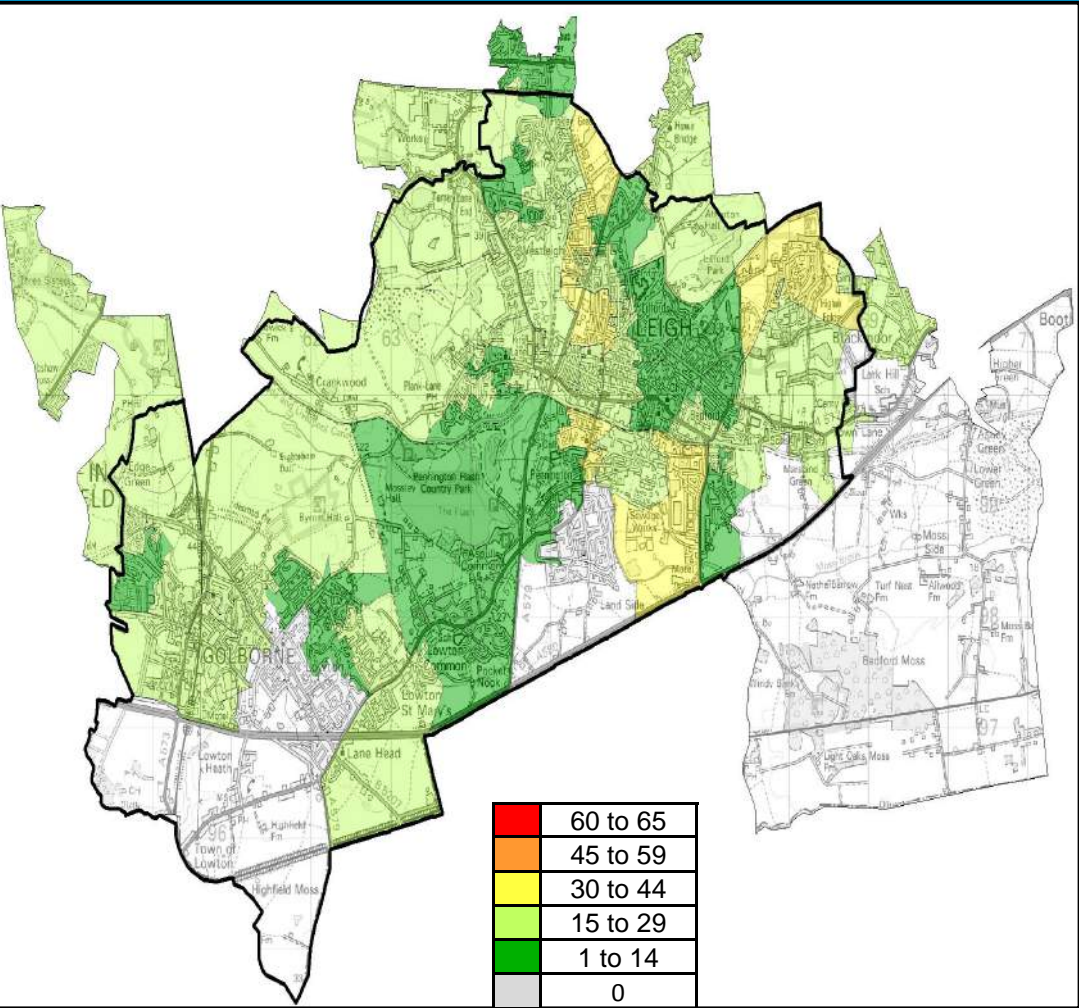


Overview

Locality 4 has the highest number of Children Aged 0-16 Claiming DLA of all Wigan Council's localities with 440 identified. The highest concentrations of Children Aged 0-16 Claiming DLA are within the localities of Plank Lane/ Crankwood, Lakeside/Firs Lane and Lowton St Mary's/ Lane Head.

The average number of Children Aged 0-16 Claiming DLA of all Wigan Council's localities is 368.

Lone Parent Benefit



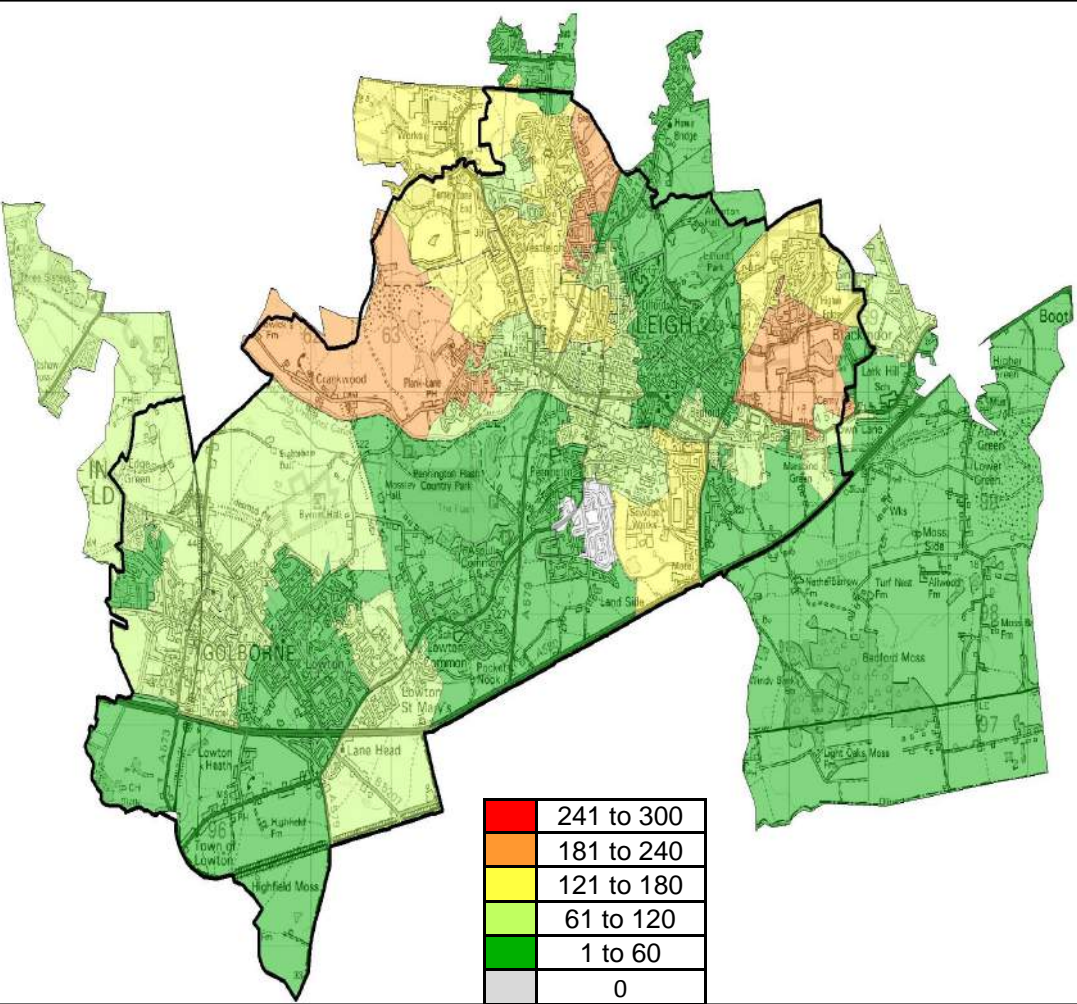
Overview

Locality 4 has the highest of number of lone parent benefit claimants of all Wigan Council's localities with 673 identified. The highest concentration of lone parent benefit claimants within locality 4 is 40 claimants for Westleigh East.

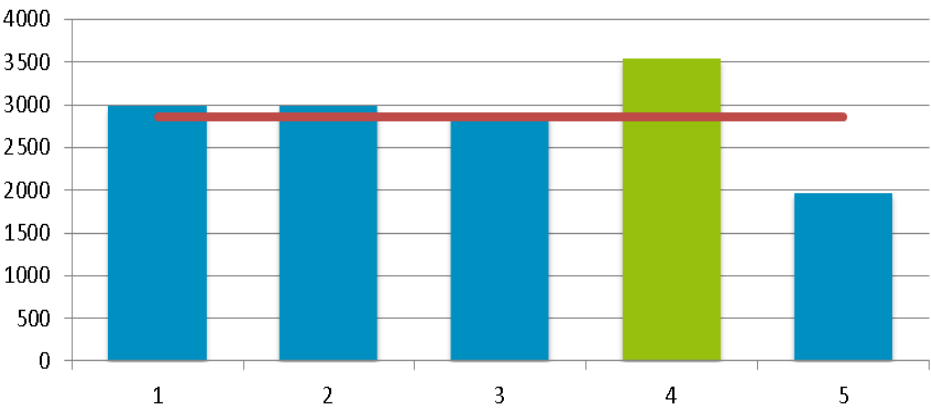
The average number of lone parent benefit claimants for all of Wigan Council's localities is 506 claimants.

Locality Rank: 1st
Highest Concentration: Westleigh East

Children Living in Out of Work Benefit Households



Number of Children Living in Out of Work Benefit Households by Locality



Overview

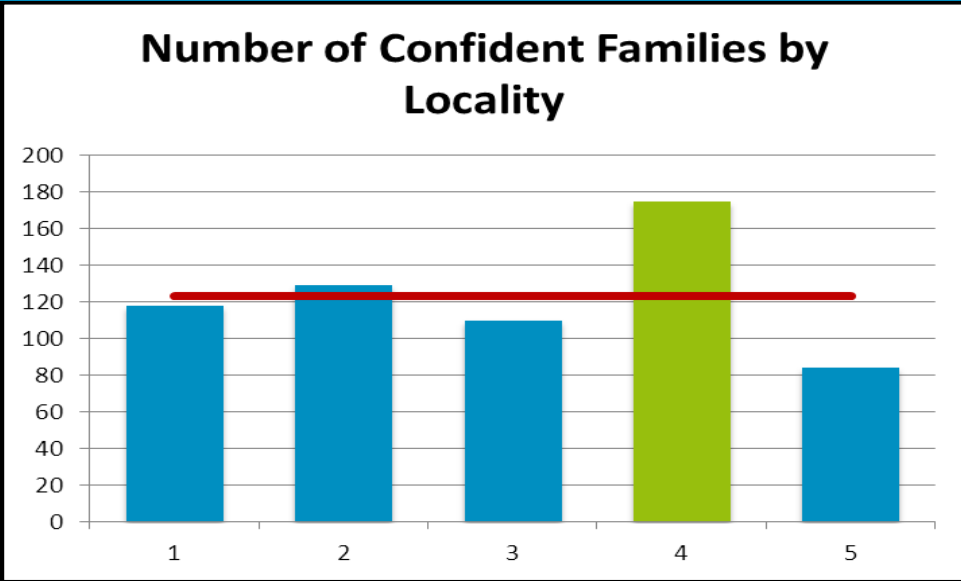
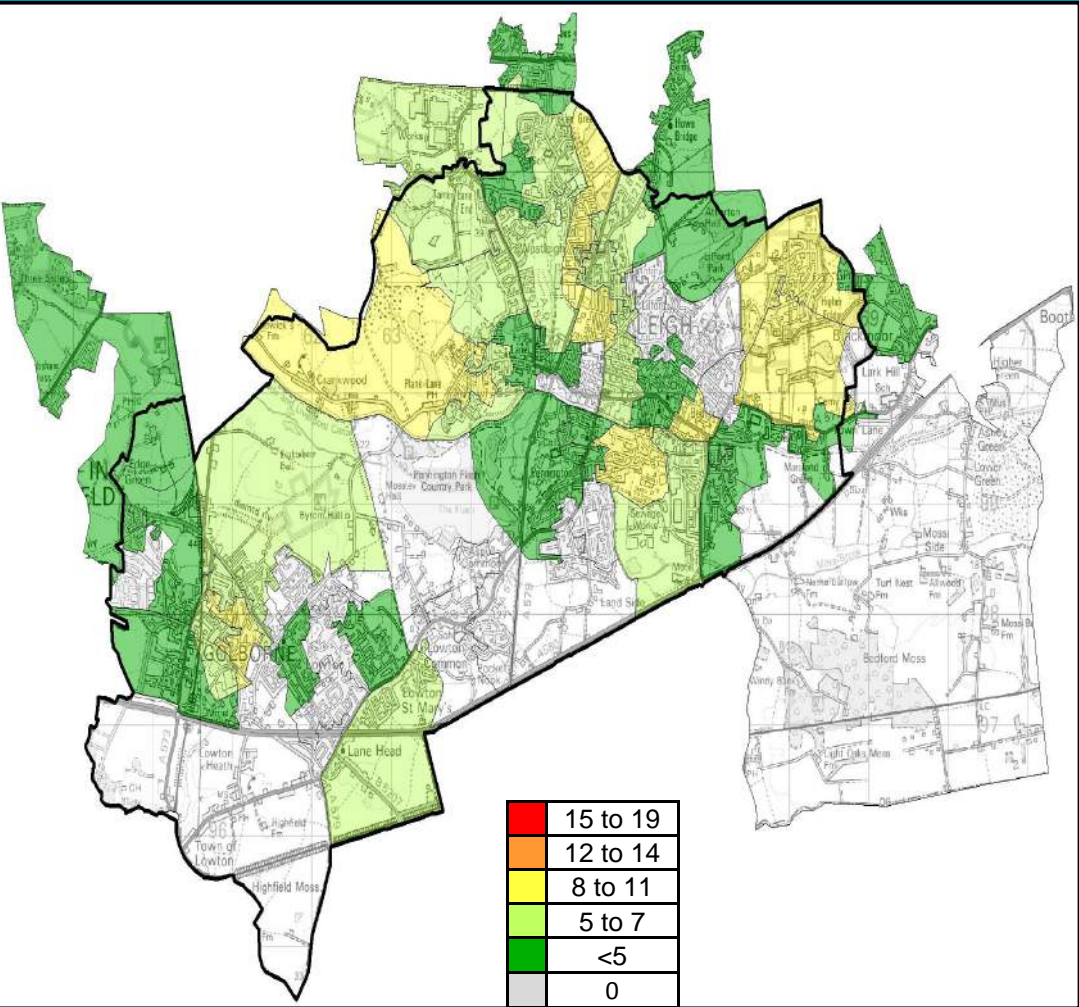
Locality 4 has the highest number of children living in out of work benefit households by locality of all Wigan Council's localities with 3533 identified. The highest concentration of children living in out of work benefit households is in Westleigh East with 195.

The average number of children living in out of work benefit households across all Wigan Council's localities is 2864 children.

Locality Rank: 1st

Highest Concentration: Westleigh East

Confident Families



Overview

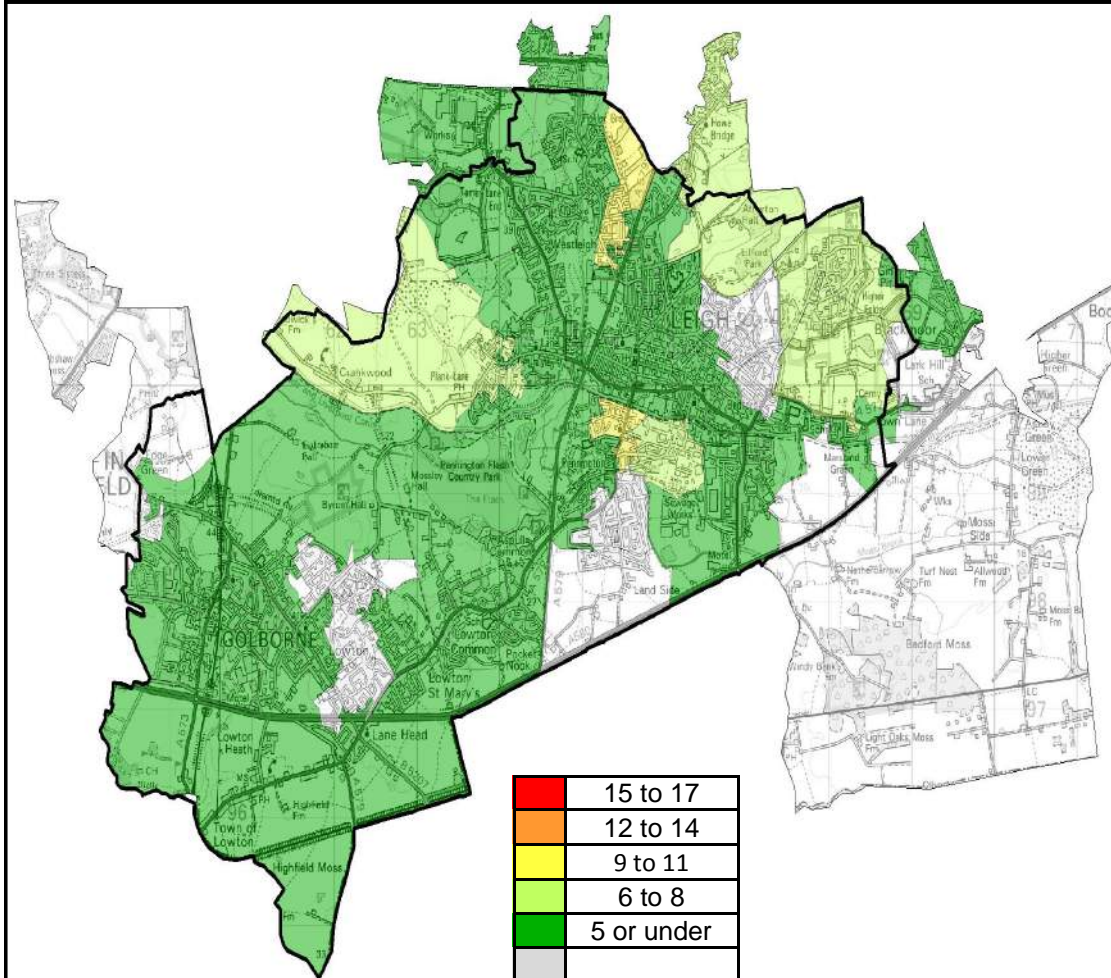
Locality 4 has the highest number of identified confident families of all Wigan Council’s localities with 175 identified.

The areas with the largest number of identified confident families are Westleigh East and Hilton Park. Although Westleigh and Hilton Park are yellow on the map they are not one of the highest areas in the borough. As Locality 4 has no red areas, this indicates that confident families have a more even distribution throughout the locality.

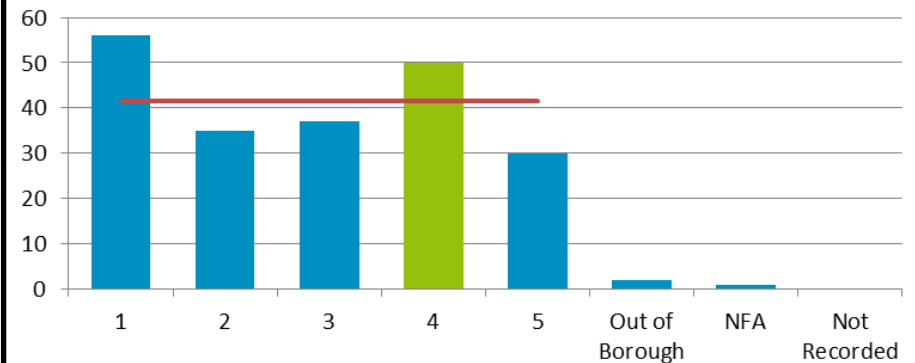
Locality Rank: 1st

Highest Concentration: Westleigh East & Hilton Park

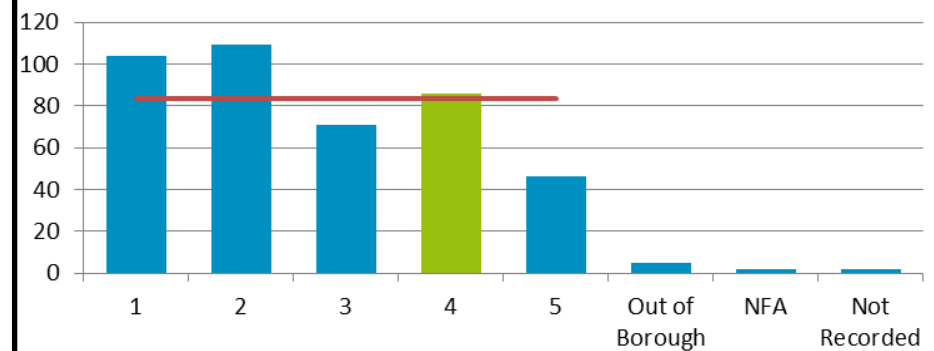
Drug and Alcohol Service Users



Number of Drug and Alcohol Team Service Users Living With Children (Alcohol) by Locality



Number of Drug and Alcohol Team Service Users Living With Children (Drugs) by Locality



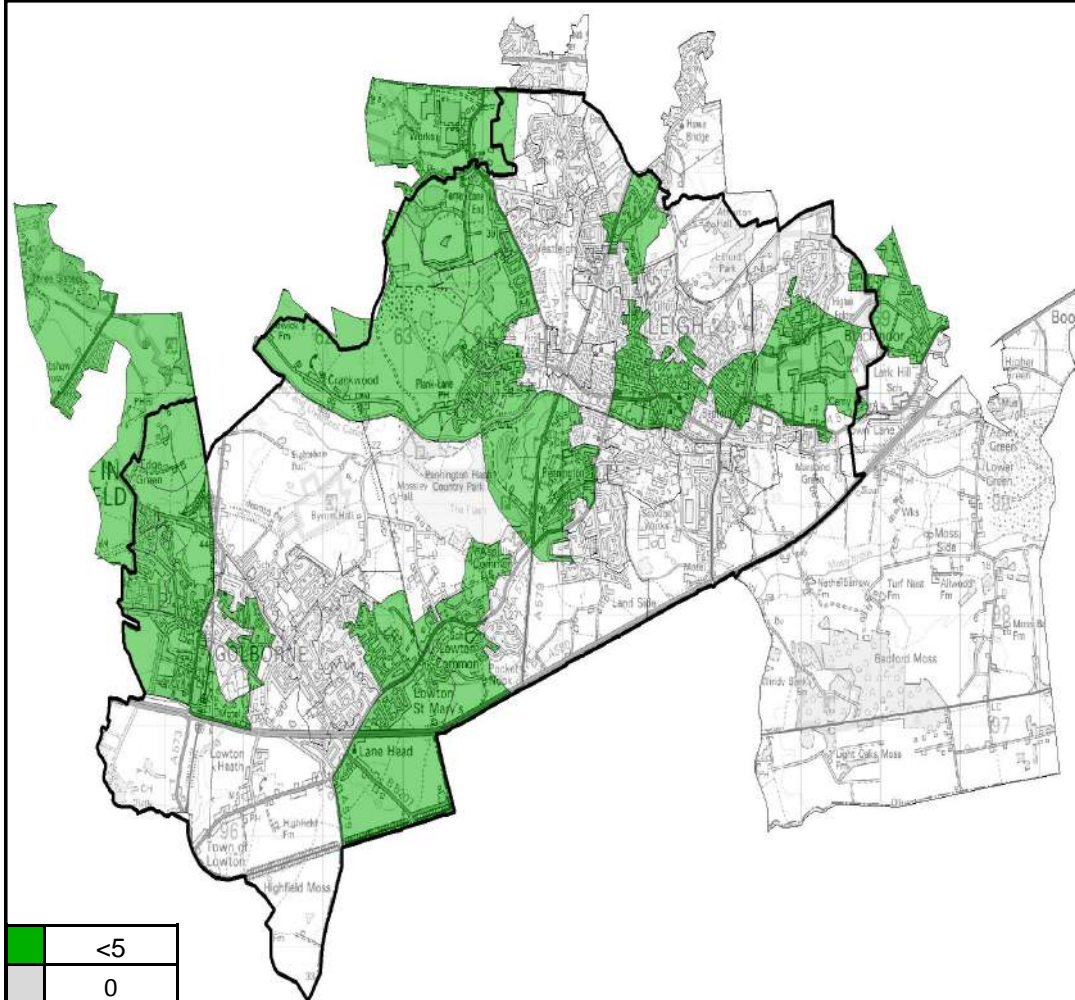
Overview

Locality 4 has the third highest overall number of drug and alcohol service team users who live with children of all Wigan Borough's 5 localities. Locality 4 has the second highest number of service users for alcohol and the third highest number of users for drugs. Etherstone / Diamond Street has the highest number of Drug and Alcohol Team Service users that live with children.

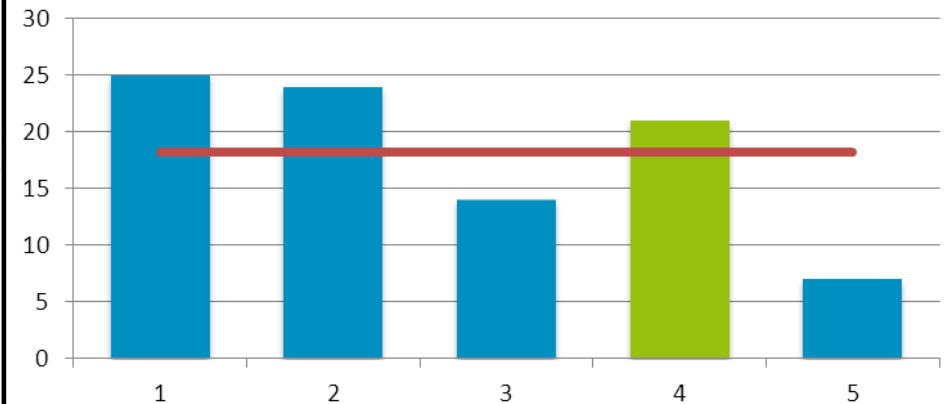
Locality Rank: 3rd

Highest Concentration:
Etherstone / Diamond Street

Entrants to the Youth Justice System



Entrants to Youth Justice System by Locality



Overview

Locality 4 had the third highest number of entrants to the youth justice system with 21 entrants in 2013.

The borough average is 18 per locality.

Locality Rank: 3rd

Highest Concentration: Plank Lane / Firs Lane

Matrix

| LSOA Code | LSOA Name | CAF assessments | Children Social Care | CPP | Gateway referrals | Looked after children | A & E attendance | Alcohol specific hospital stay | Child obesity (Reception) | Child obesity (Year 6) | Children with long term condition | Non elective admissions for intentional/unintentional injury | Non elective admissions for under 5's | Out patients appointments | GLD at EYFSP | Attainment level at KS2 | Attainment level at KS4 | Free school meals | NEET | SEN (Primary) | SEN (Secondary) | Unauthorised absence | BME | Child poverty | Children claiming DLA | Lone Parent Benefit | Out of work benefits | Confident Families | DAAT Users | Youth Justice System |
|-----------|-------------------------------|-----------------|----------------------|-----|-------------------|-----------------------|------------------|--------------------------------|---------------------------|------------------------|-----------------------------------|--|---------------------------------------|---------------------------|--------------|-------------------------|-------------------------|-------------------|------|---------------|-----------------|----------------------|-----|---------------|-----------------------|---------------------|----------------------|--------------------|------------|----------------------|
| E01006220 | Stubshaw Cross | | | | | | | | | | | | | | | | | | | | | | | | | | | | | |
| E01006227 | Golborne East | | | | | | | | | | | | | | | | | | | | | | | | | | | | | |
| E01006228 | Golborne North | | | | | | | | | | | | | | | | | | | | | | | | | | | | | |
| E01006245 | Howe Bridge | | | | | | | | | | | | | | | | | | | | | | | | | | | | | |
| E01006246 | Marsland Green / Hooten Green | | | | | | | | | | | | | | | | | | | | | | | | | | | | | |
| E01006247 | Warrington Road East | | | | | | | | | | | | | | | | | | | | | | | | | | | | | |
| E01006248 | Higher Folds North | | | | | | | | | | | | | | | | | | | | | | | | | | | | | |
| E01006249 | Higher Folds South | | | | | | | | | | | | | | | | | | | | | | | | | | | | | |
| E01006251 | Town Lane / The Mosses | | | | | | | | | | | | | | | | | | | | | | | | | | | | | |
| E01006252 | Bedford | | | | | | | | | | | | | | | | | | | | | | | | | | | | | |
| E01006281 | Dangerous Corner | | | | | | | | | | | | | | | | | | | | | | | | | | | | | |
| E01006282 | Pickley Green / Abbey Lane | | | | | | | | | | | | | | | | | | | | | | | | | | | | | |
| E01006283 | Westleigh West | | | | | | | | | | | | | | | | | | | | | | | | | | | | | |
| E01006284 | Tamer East | | | | | | | | | | | | | | | | | | | | | | | | | | | | | |
| E01006296 | Siddow Common | | | | | | | | | | | | | | | | | | | | | | | | | | | | | |
| E01006297 | Warrington Road West | | | | | | | | | | | | | | | | | | | | | | | | | | | | | |
| E01006298 | Etherstone / Diamond Street | | | | | | | | | | | | | | | | | | | | | | | | | | | | | |

Matrix

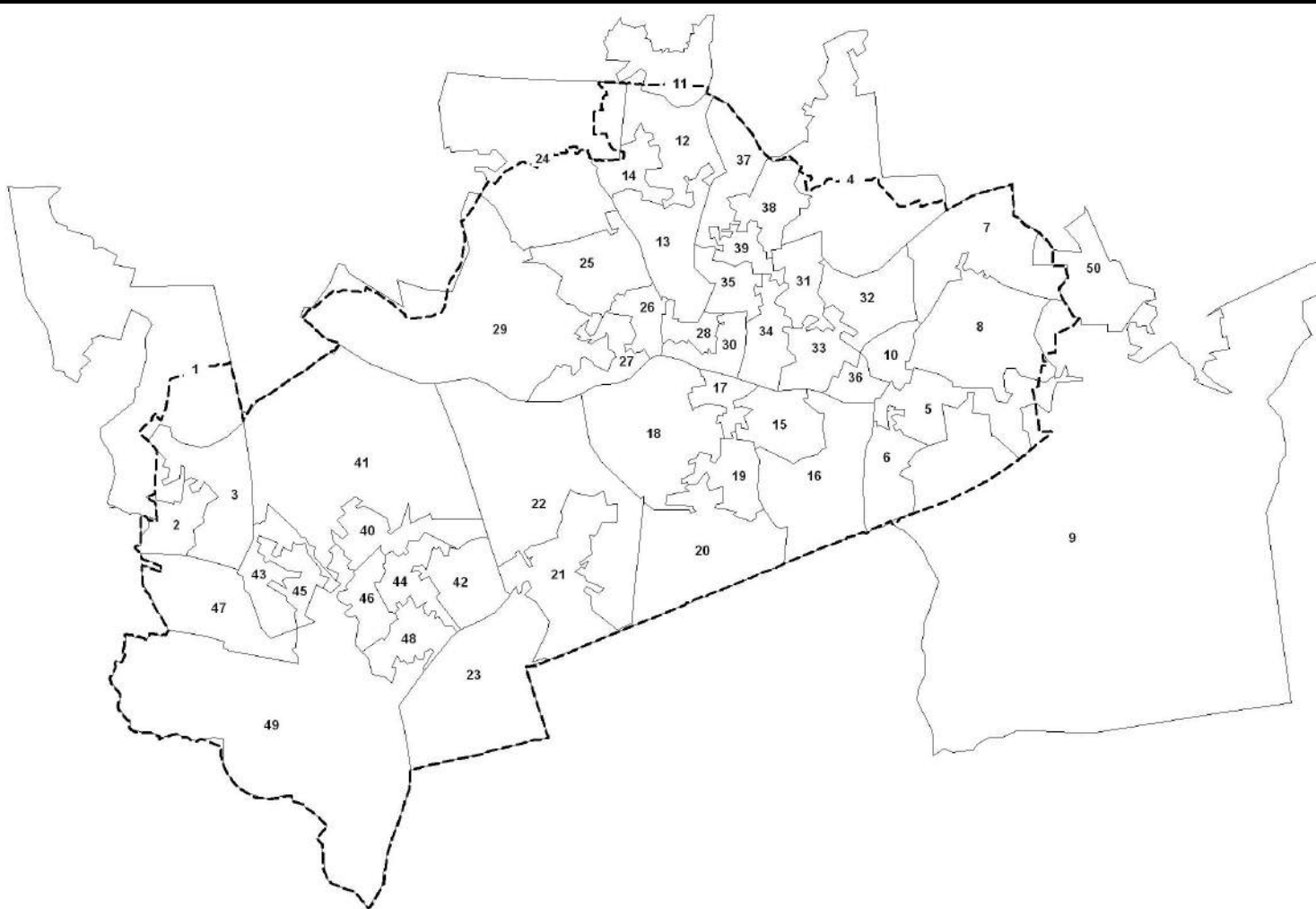
| | Youth Justice System | | | | | | | | | | | | | | | | | | | | | | | | | | | | | | | | | | | | | | | | | | | | | | | | | | | | | | | | | | | | | | | | | | | | | | | | | | | | | | | | | | | | | | | | | | | | | | | | | | | | | | | | | | | | | | | | | | | | | | | | | | | | | | | | | | | | | | | | | | | | | | | | | | | | | | | | | | | | | | | | | | | | | | | | | | | | | | | | | | | | | | | | | | | | | | | | | | | | | | | | | | | | | | | | | | | | | | | | | | | | | | | | | | | | | | | | | | | | | | | | | | | | | | | | | | | | | | | | | | | | | | | | | | | | | | | | | | | | | | | | | | | | | | | | | | | | | | | | | | | | | | | | | | | | | | | | | | | | | | | | | | | | | | | | | | | | | | | | | | | | | | | | | | | | | | | | | | | | | | | | | | | | | | | | | | | | | | | | | | | | | | | | | | | | | | | | | | | | | | | | | | | | | | | | | | | | | | | | | | | | | | | | | | | | | | | | | | | | | | | | | | | | | | | | | | | | | | | | | | | | | | | | | | | | | | | | | | | | | | | | | | | | | | | | | | | | | | | | | | | | | | | | | | | | | | | | | | | | | | | | | | | | | | | | | | | | | | | | | | | | | | | | | | | | | | | | | | | | | | | | | | | | | | | | | | | | | | | | | | | | | | | | | | | | | | | | | | | | | | | | | | | | | | | | | | | | | | | | | | | | | | | | | | | | | | | | | | | | | | | | | | | | | | | | | | | | | | | | | | | | | | | | | | | | | | | | | | | | | | | | | | | | | | | | | | | | | | | | | | | | | | | | | | | | | | | | | | | | | | | | | | | | | | | | | | | | | | | | | | | | | | | | | | | | | | | | | | | | | | | | | | | | | | | | | | | | | | | | | | | | | | | | | | | | | | | | | | | | | | | | | | | | | | | | | | | | | | | | | | | | | | | | | | | | | | | | | | | | | | | | | | | | | | | | | | | | | | | | | | | | | | | | | | | | | | | | | | | | | | | | | | | | | | | | | | | | | | | | | | | | | | | | | | | | | | | | | | | | | | | | | | | | | | | | | | | | | | | | | | | | | | | | | | | | | | | | | | | | | | | | | | | | | | | | | | | | | | | | | | | | | | | | | | | | | | | | | | | | | | | | | | | | | | | | | | | | | | | | | | | | | | | | | | | | | | | | | | | | | | | | | | | | | | | | | | | | | | | | | | | | | | | | | | | | | | | | | | | | | | | | | | | | | | | | | | | | | | | | | | | | | | | | | | | | | | | | | | | | | | | | | | | | | | | | | | | | | | | | | | | | | | | | | | | | | | | | | | | | | | | | | | | | | | | | | | | | | | | | | | | | | | | | | | | | | | | | | | | | | | | | | | | | | | | | | | | | | | | | | | | | | | | | | | | | | | | | | | | | | | | | | | | | | | | | | | | | | | | | | | | | | | | | | | | | | | | | | | | | | | | | | | | | | | | | | | | | | | | | | | | | | | | | | | | | | | | | | | | | | | | | | | | | | | | | | | | | | | | | | | | | | | | | | | | | | | | | | | | | | | | | | | | | | | | | | | | | | | | | | | | | | | | | | | | | | | | | | | | | | | | | | | | | | | | | | | | | | | | | | | | | | | | | | | | | | | | | | | | | | | | | | | | | | | | | | | | | | | | | | | | | | | | | | | | | | | | | | | | | | | | | | | | | |
|--|----------------------|--|--|--|--|--|--|--|--|--|--|--|--|--|--|--|--|--|--|--|--|--|--|--|--|--|--|--|--|--|--|--|--|--|--|--|--|--|--|--|--|--|--|--|--|--|--|--|--|--|--|--|--|--|--|--|--|--|--|--|--|--|--|--|--|--|--|--|--|--|--|--|--|--|--|--|--|--|--|--|--|--|--|--|--|--|--|--|--|--|--|--|--|--|--|--|--|--|--|--|--|--|--|--|--|--|--|--|--|--|--|--|--|--|--|--|--|--|--|--|--|--|--|--|--|--|--|--|--|--|--|--|--|--|--|--|--|--|--|--|--|--|--|--|--|--|--|--|--|--|--|--|--|--|--|--|--|--|--|--|--|--|--|--|--|--|--|--|--|--|--|--|--|--|--|--|--|--|--|--|--|--|--|--|--|--|--|--|--|--|--|--|--|--|--|--|--|--|--|--|--|--|--|--|--|--|--|--|--|--|--|--|--|--|--|--|--|--|--|--|--|--|--|--|--|--|--|--|--|--|--|--|--|--|--|--|--|--|--|--|--|--|--|--|--|--|--|--|--|--|--|--|--|--|--|--|--|--|--|--|--|--|--|--|--|--|--|--|--|--|--|--|--|--|--|--|--|--|--|--|--|--|--|--|--|--|--|--|--|--|--|--|--|--|--|--|--|--|--|--|--|--|--|--|--|--|--|--|--|--|--|--|--|--|--|--|--|--|--|--|--|--|--|--|--|--|--|--|--|--|--|--|--|--|--|--|--|--|--|--|--|--|--|--|--|--|--|--|--|--|--|--|--|--|--|--|--|--|--|--|--|--|--|--|--|--|--|--|--|--|--|--|--|--|--|--|--|--|--|--|--|--|--|--|--|--|--|--|--|--|--|--|--|--|--|--|--|--|--|--|--|--|--|--|--|--|--|--|--|--|--|--|--|--|--|--|--|--|--|--|--|--|--|--|--|--|--|--|--|--|--|--|--|--|--|--|--|--|--|--|--|--|--|--|--|--|--|--|--|--|--|--|--|--|--|--|--|--|--|--|--|--|--|--|--|--|--|--|--|--|--|--|--|--|--|--|--|--|--|--|--|--|--|--|--|--|--|--|--|--|--|--|--|--|--|--|--|--|--|--|--|--|--|--|--|--|--|--|--|--|--|--|--|--|--|--|--|--|--|--|--|--|--|--|--|--|--|--|--|--|--|--|--|--|--|--|--|--|--|--|--|--|--|--|--|--|--|--|--|--|--|--|--|--|--|--|--|--|--|--|--|--|--|--|--|--|--|--|--|--|--|--|--|--|--|--|--|--|--|--|--|--|--|--|--|--|--|--|--|--|--|--|--|--|--|--|--|--|--|--|--|--|--|--|--|--|--|--|--|--|--|--|--|--|--|--|--|--|--|--|--|--|--|--|--|--|--|--|--|--|--|--|--|--|--|--|--|--|--|--|--|--|--|--|--|--|--|--|--|--|--|--|--|--|--|--|--|--|--|--|--|--|--|--|--|--|--|--|--|--|--|--|--|--|--|--|--|--|--|--|--|--|--|--|--|--|--|--|--|--|--|--|--|--|--|--|--|--|--|--|--|--|--|--|--|--|--|--|--|--|--|--|--|--|--|--|--|--|--|--|--|--|--|--|--|--|--|--|--|--|--|--|--|--|--|--|--|--|--|--|--|--|--|--|--|--|--|--|--|--|--|--|--|--|--|--|--|--|--|--|--|--|--|--|--|--|--|--|--|--|--|--|--|--|--|--|--|--|--|--|--|--|--|--|--|--|--|--|--|--|--|--|--|--|--|--|--|--|--|--|--|--|--|--|--|--|--|--|--|--|--|--|--|--|--|--|--|--|--|--|--|--|--|--|--|--|--|--|--|--|--|--|--|--|--|--|--|--|--|--|--|--|--|--|--|--|--|--|--|--|--|--|--|--|--|--|--|--|--|--|--|--|--|--|--|--|--|--|--|--|--|--|--|--|--|--|--|--|--|--|--|--|--|--|--|--|--|--|--|--|--|--|--|--|--|--|--|--|--|--|--|--|--|--|--|--|--|--|--|--|--|--|--|--|--|--|--|--|--|--|--|--|--|--|--|--|--|--|--|--|--|--|--|--|--|--|--|--|--|--|--|--|--|--|--|--|--|--|--|--|--|--|--|--|--|--|--|--|--|--|--|--|--|--|--|--|--|--|--|--|--|--|--|--|--|--|--|--|--|--|--|--|--|--|--|--|--|--|--|--|--|--|--|--|--|--|--|--|--|--|--|--|--|--|--|--|--|--|--|--|--|--|--|--|--|--|--|--|--|--|--|--|--|--|--|--|--|--|--|--|--|--|--|--|--|--|--|--|--|--|--|--|--|--|--|--|--|--|--|--|--|--|--|--|--|--|--|--|--|--|--|--|--|--|--|--|--|--|--|--|--|--|--|--|--|--|--|--|--|--|--|--|--|--|--|--|--|--|--|--|--|--|--|--|--|--|--|--|--|--|--|--|--|--|--|--|--|--|--|--|--|--|--|--|--|--|--|--|--|--|--|--|--|--|--|--|--|--|--|--|--|--|--|--|--|--|--|--|--|--|--|--|--|--|--|--|--|--|--|--|--|--|--|--|--|--|--|--|--|--|--|--|--|--|--|--|--|--|--|--|--|--|--|--|--|--|--|--|--|--|--|--|--|--|--|--|--|--|--|--|--|--|--|--|--|--|--|--|--|--|--|--|--|--|--|--|--|--|--|--|--|--|--|--|--|--|--|--|--|--|--|--|--|--|--|--|--|--|--|--|--|--|--|--|--|--|--|--|--|--|--|--|--|--|--|--|--|--|--|--|--|--|--|--|--|--|--|--|--|--|--|--|--|--|--|--|--|--|--|--|--|--|--|--|--|--|--|--|--|--|--|--|--|--|--|--|--|--|--|--|--|--|--|--|--|--|--|--|--|--|--|--|--|--|--|--|--|--|--|--|--|--|--|--|--|--|--|--|--|--|--|--|--|--|--|--|--|--|--|--|--|--|--|--|--|--|--|--|--|--|--|--|--|--|--|--|--|--|--|--|--|--|--|--|--|--|--|--|--|--|--|--|--|--|--|--|--|--|--|--|--|--|--|--|--|--|--|--|--|--|--|--|--|--|--|--|--|--|--|--|--|--|--|--|--|--|--|--|--|--|--|--|--|--|--|--|--|--|--|--|--|--|--|--|--|--|--|--|--|--|--|--|--|--|--|--|--|--|--|--|--|--|--|--|--|--|--|--|--|--|--|--|--|--|--|--|--|--|--|--|--|--|--|--|--|--|--|--|--|--|--|--|--|--|--|--|--|--|--|--|--|--|--|--|--|--|--|--|--|--|--|--|--|--|--|
|--|----------------------|--|--|--|--|--|--|--|--|--|--|--|--|--|--|--|--|--|--|--|--|--|--|--|--|--|--|--|--|--|--|--|--|--|--|--|--|--|--|--|--|--|--|--|--|--|--|--|--|--|--|--|--|--|--|--|--|--|--|--|--|--|--|--|--|--|--|--|--|--|--|--|--|--|--|--|--|--|--|--|--|--|--|--|--|--|--|--|--|--|--|--|--|--|--|--|--|--|--|--|--|--|--|--|--|--|--|--|--|--|--|--|--|--|--|--|--|--|--|--|--|--|--|--|--|--|--|--|--|--|--|--|--|--|--|--|--|--|--|--|--|--|--|--|--|--|--|--|--|--|--|--|--|--|--|--|--|--|--|--|--|--|--|--|--|--|--|--|--|--|--|--|--|--|--|--|--|--|--|--|--|--|--|--|--|--|--|--|--|--|--|--|--|--|--|--|--|--|--|--|--|--|--|--|--|--|--|--|--|--|--|--|--|--|--|--|--|--|--|--|--|--|--|--|--|--|--|--|--|--|--|--|--|--|--|--|--|--|--|--|--|--|--|--|--|--|--|--|--|--|--|--|--|--|--|--|--|--|--|--|--|--|--|--|--|--|--|--|--|--|--|--|--|--|--|--|--|--|--|--|--|--|--|--|--|--|--|--|--|--|--|--|--|--|--|--|--|--|--|--|--|--|--|--|--|--|--|--|--|--|--|--|--|--|--|--|--|--|--|--|--|--|--|--|--|--|--|--|--|--|--|--|--|--|--|--|--|--|--|--|--|--|--|--|--|--|--|--|--|--|--|--|--|--|--|--|--|--|--|--|--|--|--|--|--|--|--|--|--|--|--|--|--|--|--|--|--|--|--|--|--|--|--|--|--|--|--|--|--|--|--|--|--|--|--|--|--|--|--|--|--|--|--|--|--|--|--|--|--|--|--|--|--|--|--|--|--|--|--|--|--|--|--|--|--|--|--|--|--|--|--|--|--|--|--|--|--|--|--|--|--|--|--|--|--|--|--|--|--|--|--|--|--|--|--|--|--|--|--|--|--|--|--|--|--|--|--|--|--|--|--|--|--|--|--|--|--|--|--|--|--|--|--|--|--|--|--|--|--|--|--|--|--|--|--|--|--|--|--|--|--|--|--|--|--|--|--|--|--|--|--|--|--|--|--|--|--|--|--|--|--|--|--|--|--|--|--|--|--|--|--|--|--|--|--|--|--|--|--|--|--|--|--|--|--|--|--|--|--|--|--|--|--|--|--|--|--|--|--|--|--|--|--|--|--|--|--|--|--|--|--|--|--|--|--|--|--|--|--|--|--|--|--|--|--|--|--|--|--|--|--|--|--|--|--|--|--|--|--|--|--|--|--|--|--|--|--|--|--|--|--|--|--|--|--|--|--|--|--|--|--|--|--|--|--|--|--|--|--|--|--|--|--|--|--|--|--|--|--|--|--|--|--|--|--|--|--|--|--|--|--|--|--|--|--|--|--|--|--|--|--|--|--|--|--|--|--|--|--|--|--|--|--|--|--|--|--|--|--|--|--|--|--|--|--|--|--|--|--|--|--|--|--|--|--|--|--|--|--|--|--|--|--|--|--|--|--|--|--|--|--|--|--|--|--|--|--|--|--|--|--|--|--|--|--|--|--|--|--|--|--|--|--|--|--|--|--|--|--|--|--|--|--|--|--|--|--|--|--|--|--|--|--|--|--|--|--|--|--|--|--|--|--|--|--|--|--|--|--|--|--|--|--|--|--|--|--|--|--|--|--|--|--|--|--|--|--|--|--|--|--|--|--|--|--|--|--|--|--|--|--|--|--|--|--|--|--|--|--|--|--|--|--|--|--|--|--|--|--|--|--|--|--|--|--|--|--|--|--|--|--|--|--|--|--|--|--|--|--|--|--|--|--|--|--|--|--|--|--|--|--|--|--|--|--|--|--|--|--|--|--|--|--|--|--|--|--|--|--|--|--|--|--|--|--|--|--|--|--|--|--|--|--|--|--|--|--|--|--|--|--|--|--|--|--|--|--|--|--|--|--|--|--|--|--|--|--|--|--|--|--|--|--|--|--|--|--|--|--|--|--|--|--|--|--|--|--|--|--|--|--|--|--|--|--|--|--|--|--|--|--|--|--|--|--|--|--|--|--|--|--|--|--|--|--|--|--|--|--|--|--|--|--|--|--|--|--|--|--|--|--|--|--|--|--|--|--|--|--|--|--|--|--|--|--|--|--|--|--|--|--|--|--|--|--|--|--|--|--|--|--|--|--|--|--|--|--|--|--|--|--|--|--|--|--|--|--|--|--|--|--|--|--|--|--|--|--|--|--|--|--|--|--|--|--|--|--|--|--|--|--|--|--|--|--|--|--|--|--|--|--|--|--|--|--|--|--|--|--|--|--|--|--|--|--|--|--|--|--|--|--|--|--|--|--|--|--|--|--|--|--|--|--|--|--|--|--|--|--|--|--|--|--|--|--|--|--|--|--|--|--|--|--|--|--|--|--|--|--|--|--|--|--|--|--|--|--|--|--|--|--|--|--|--|--|--|--|--|--|--|--|--|--|--|--|--|--|--|--|--|--|--|--|--|--|--|--|--|--|--|--|--|--|--|--|--|--|--|--|--|--|--|--|--|--|--|--|--|--|--|--|--|--|--|--|--|--|--|--|--|--|--|--|--|--|--|--|--|--|--|--|--|--|--|--|--|--|--|--|--|--|--|--|--|--|--|--|--|--|--|--|--|--|--|--|--|--|--|--|--|--|--|--|--|--|--|--|--|--|--|--|--|--|--|--|--|--|--|--|--|--|--|--|--|--|--|--|--|--|--|--|--|--|--|--|--|--|--|--|--|--|--|--|--|--|--|--|--|--|--|--|--|--|--|--|--|--|--|--|--|--|--|--|--|--|--|--|--|--|--|--|--|--|--|--|--|--|--|--|--|--|--|--|--|--|--|--|--|--|--|--|--|--|--|--|--|--|--|--|--|--|--|--|--|--|--|--|--|--|--|--|--|--|--|--|--|--|--|--|--|--|--|--|--|--|--|--|--|--|--|--|--|--|--|--|--|--|--|--|--|--|--|--|--|--|--|--|--|--|--|--|--|--|--|--|--|--|--|--|--|--|--|--|--|--|--|--|--|--|--|--|--|--|--|--|--|--|--|--|--|--|--|--|--|--|--|--|--|--|--|--|--|--|--|--|--|--|--|--|--|--|--|--|--|--|--|--|--|--|--|--|--|--|--|--|--|--|--|--|--|--|--|--|--|--|--|--|--|--|--|--|--|--|--|--|--|--|--|--|--|--|--|--|--|--|--|--|--|--|--|--|--|--|--|--|--|--|--|--|--|--|--|--|--|--|

Matrix

| LSOA Code | LSOA Name | CAF assessments | Children Social Care | CPP | Gateway referrals | Looked after children | A & E attendance | Alcohol specific hospital stay | Child obesity (Reception) | Child obesity (Year 6) | Children with long term condition | Non elective admissions for intentional- al/unintentional injury | Non elective admissions for under 5's | Out patients appointments | GLD at EYFSP | Attainment level at KS2 | Attainment level at KS4 | Free school meals | NEET | SEN (Primary) | SEN (Secondary) | Unauthorised absence | BME | Child poverty | Children claiming DLA | Lone Parent Benefit | Out of work benefits | Confident Families | DAAT Users | Youth Justice System |
|-----------|--------------------------|-----------------|----------------------|-----|-------------------|-----------------------|------------------|--------------------------------|---------------------------|------------------------|-----------------------------------|---|---------------------------------------|---------------------------|--------------|-------------------------|-------------------------|-------------------|------|---------------|-----------------|----------------------|-----|---------------|-----------------------|---------------------|----------------------|--------------------|------------|----------------------|
| E01006334 | Hilton Park | | | | | | | | | | | | | | | | | | | | | | | | | | | | | |
| E01006335 | Chapel Street | | | | | | | | | | | | | | | | | | | | | | | | | | | | | |
| E01006336 | Westleigh East | | | | | | | | | | | | | | | | | | | | | | | | | | | | | |
| E01006337 | Leigh Road | | | | | | | | | | | | | | | | | | | | | | | | | | | | | |
| E01006338 | Cavendish | | | | | | | | | | | | | | | | | | | | | | | | | | | | | |
| E01006339 | Scot Road | | | | | | | | | | | | | | | | | | | | | | | | | | | | | |
| E01006340 | Lowton Road East | | | | | | | | | | | | | | | | | | | | | | | | | | | | | |
| E01006341 | Hesketh Meadows | | | | | | | | | | | | | | | | | | | | | | | | | | | | | |
| E01006342 | Derby Road Estate West | | | | | | | | | | | | | | | | | | | | | | | | | | | | | |
| E01006343 | Braithwaite Road | | | | | | | | | | | | | | | | | | | | | | | | | | | | | |
| E01006344 | Derby Road Estate East | | | | | | | | | | | | | | | | | | | | | | | | | | | | | |
| E01006345 | Lowton St. Lukes | | | | | | | | | | | | | | | | | | | | | | | | | | | | | |
| E01006346 | Golborne South | | | | | | | | | | | | | | | | | | | | | | | | | | | | | |
| E01006347 | Bradwell Road Estate | | | | | | | | | | | | | | | | | | | | | | | | | | | | | |
| E01006348 | Lowton Heath / Lane Head | | | | | | | | | | | | | | | | | | | | | | | | | | | | | |
| E01006376 | Blackmoor / Gin Pit | | | | | | | | | | | | | | | | | | | | | | | | | | | | | |

Reference Map

| | LSOA Name | | | | |
|----|-------------------------------|----|------------------------|----|--------------------------|
| 1 | Stubshaw Cross | | | | |
| 2 | Golborne East | | | | |
| 3 | Golborne North | | | | |
| 4 | Howe Bridge | | | | |
| 5 | Marsland Green / Hooten Green | | | | |
| 6 | Warrington Road East | | | | |
| 7 | Higher Folds North | | | | |
| 8 | Higher Folds South | | | | |
| 9 | Town Lane / The Mosses | | | | |
| 10 | Bedford | | | | |
| 11 | Dangerous Corner | | | | |
| 12 | Pickley Green / Abbey Lane | | | | |
| 13 | Westleigh West | | | | |
| 14 | Tamer East | | | | |
| 15 | Siddow Common | | | | |
| 16 | Warrington Road West | | | | |
| 17 | Etherstone / Diamond Street | | | | |
| 18 | Pennington West | | | | |
| 19 | Pennington East | | | | |
| 20 | Pennington South | | | | |
| 21 | Lowton St. Mary's | | | | |
| 22 | St Helens Road East | | | | |
| 23 | Lowton St. Mary's / Lane Head | | | | |
| 24 | Tamer West | | | | |
| 25 | Wigan Road West | | | | |
| 26 | Lakeside / Firs Lane | | | | |
| 27 | Plank Lane / Firs Lane | | | | |
| 28 | Twist Lane | | | | |
| 29 | Plank Lane / Crankwood | | | | |
| 30 | Railway Road / Twist Lane | 37 | Westleigh East | 44 | Braithwaite Road |
| 31 | The Avenue | 38 | Leigh Road | 45 | Derby Road Estate East |
| 32 | Lilford / Greenways | 39 | Cavendish | 46 | Lowton St. Lukes |
| 33 | Chapel Street / Guest Street | 40 | Scot Road | 47 | Golborne South |
| 34 | Leigh Centre | 41 | Lowton Road East | 48 | Bradwell Road Estate |
| 35 | Hilton Park | 42 | Hesketh Meadows | 49 | Lowton Heath / Lane Head |
| 36 | Chapel Street | 43 | Derby Road Estate West | 50 | Blackmoor / Gin Pit |



Notes on Datasets

| <u>Dataset</u> | <u>Timeframe</u> |
|--|-------------------------|
| Population | Mid-Year Estimates 2012 |
| BME | 2011 |
| CAF Assessments | 2013 |
| Referrals to Children's Social Care | 2013 |
| Child Protection Plans | 2013/14 |
| Gateway Referrals | 2013 |
| Looked After Children | 2013/14 |
| A&E Attendances for Under 5s | 2013/14 |
| Alcohol Specific Hospital Stays for Under 18s | 2013/14 |
| Child Obesity | 2011/12 |
| Non-Elective Admissions of Children with a Long-Term Condition | 2013/14 |
| Non-Elective Admissions for Under 5s | 2013/14 |
| Non-Elective Activity for Intentional and Unintentional Injuries | 2013/14 |
| Outpatient Appointments for Under 5s | 2013/14 |
| EYFS, KS2 & KS4 Attainment Data | 2012/13 |
| Eligibility for Free School Meals | As at January 2014 |
| NEET | As at December 2013 |
| Children with a level of SEN | As at January 2014 |
| Children with 15%+ Unauthorised absence | 2012/13 |
| Demand for School Places | 2012/13 |
| School Ofsted Ratings | As at May 2014 |
| Children Living in Poverty | 2011 |
| Children Claiming DLA | As at August 2013 |
| Lone Parent Benefit | As at August 2013 |
| Children Living in Out of Work Benefit Households | As at August 2013 |
| Confident Families | As at January 2014 |
| Drug and Alcohol Service Users | As at September 2013 |
| Entrants to the Youth Justice System | 2013 |