

Locality Profiles

Locality 3– Hindley, Abram, Ashton and Bryn

Children and Young People's Services

Joint Intelligence Unit

April 2014

Contents

	<u>Page</u>
Overview	3
Population	4
Social Care	7
Hospital Activity	12
Education	20
Benefits	32
Confident Families, DAAT & Crime	36
Matrix	39
Reference Map	42
Notes on Datasets	43

Overview

Situated in the north of the Borough, Locality 3 has a general population of 68,435 of which 15,810 (23.1%) are 18 or younger.

Platt Bridge North is the most occurring LSOA as having the highest concentration of datasets. The area had the highest number of CAF assessments opened and referrals to children's social care in 2013 and most children on a protection plan in the locality. Figures are also high for children claiming DLA, children living in households which claim out of work benefits and drug and alcohol service users who live with children. Platt Bridge North also has the highest number of identified confident families.

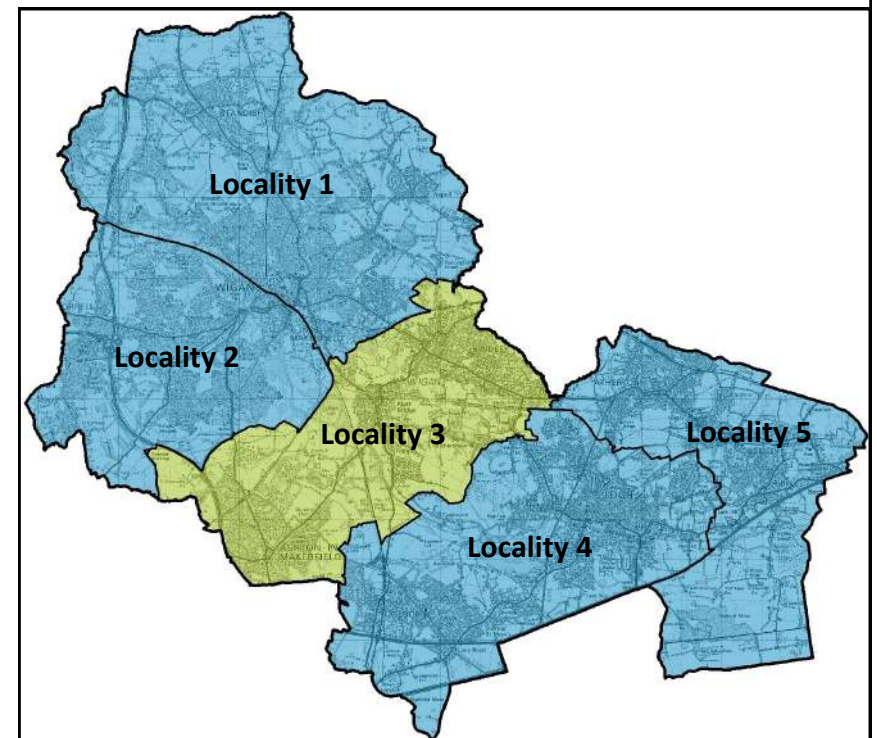
Woodcock Drive Estate also has high figures for some elements. The LSOA has the highest number of looked after children, the highest number of referrals into Gateway and the highest number of claimants of lone parent benefit. Woodcock Drive Estate also has the highest rate of non-white British in the locality.

The highest numbers of children who are eligible for free school meals and living in poverty are located in Plank Lane / Crankwood. The area also has the highest level of 16-18 year olds not in education, employment or training and the lowest level of children showing a good level of development at the early years foundation stage.

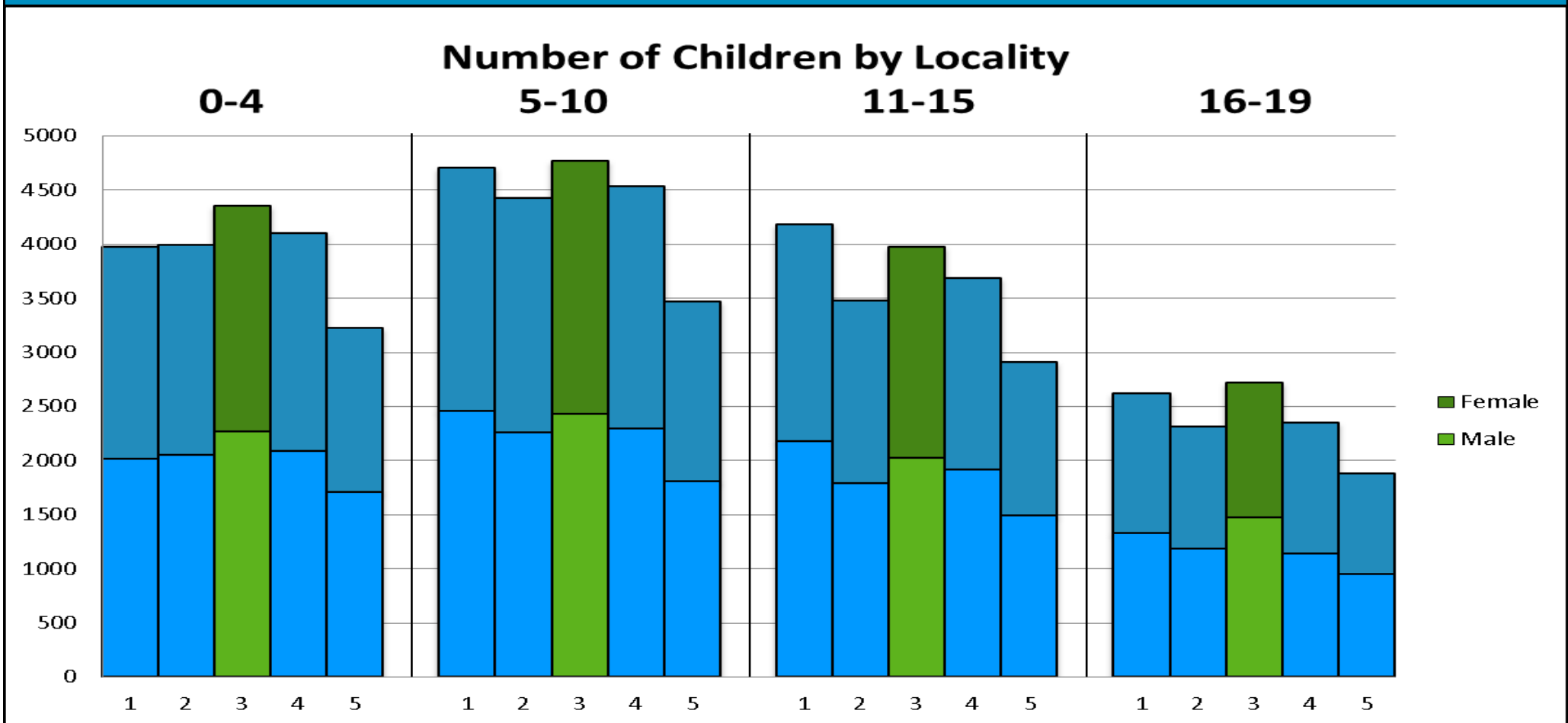
Spring View has the highest figures for hospital activity data, though may be due to it being close to Wigan hospital and areas further from the centre may attend a different hospital.

To gain a more general overview of each LSOA, consult the matrix on pages 39-41.

NB: A locality rank is given for each element. If a locality is ranked 1st, this would mean that the locality has the highest numbers of that element. A rank of 1st in Looked After Children would mean that that locality has the highest numbers of Looked After Children. Red lines on graphs indicate locality average. As some of the datasets contain low figures, any values under 5 (or under 10 for social care) have been suppressed to avoid identification of individuals.



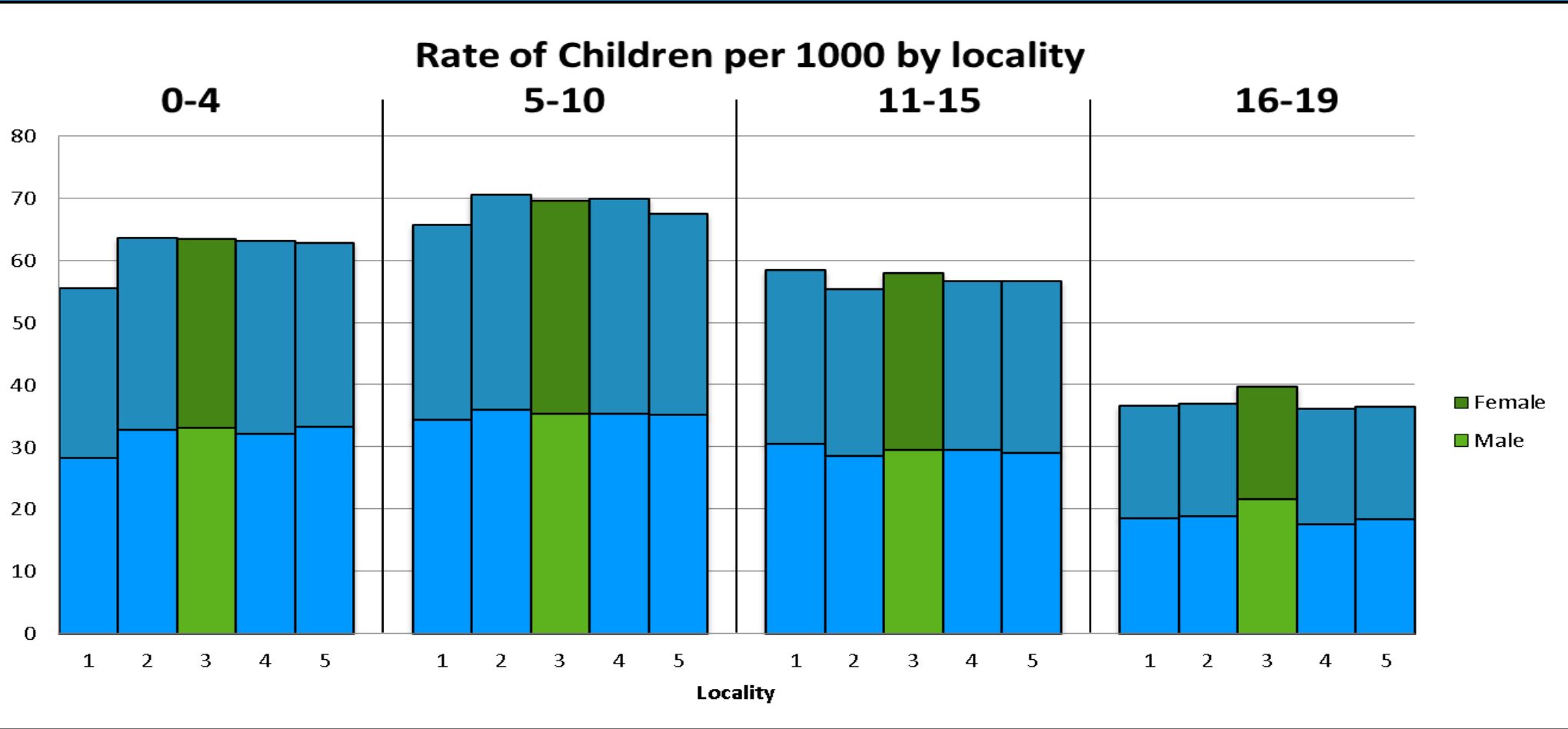
Population—Actual Figures



Overview

The number of children in locality 3 is slightly more for all age categories except category 11-15 which is the 2nd highest. The graph illustrates an even mix of males and females across all four age bands.

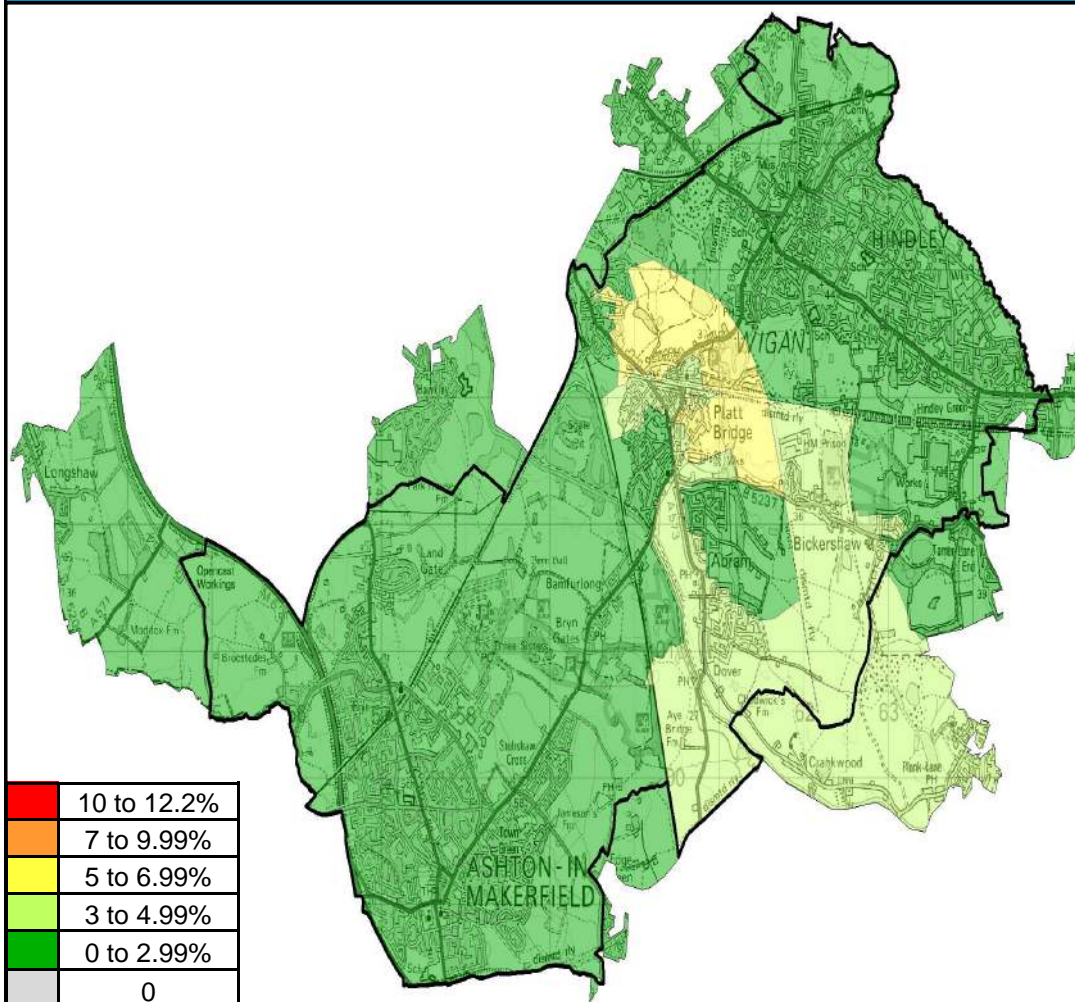
Population—Rates per 1000



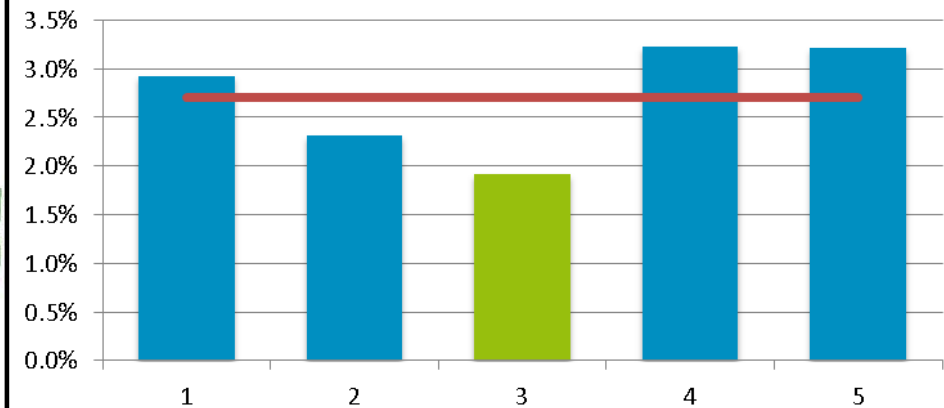
Overview

Locality 3 has a slightly higher proportion of 16-19 year olds than the other localities although rates are comparable in the other age categories.

BME Breakdown



Rate of Non-White British in Population by Locality



Overview

Locality 3 has the lowest rate of Non-White British with 1.9% identified. Woodcock Drive Estate has the highest concentration rate of Non-White British within the locality with 5.2% identified.

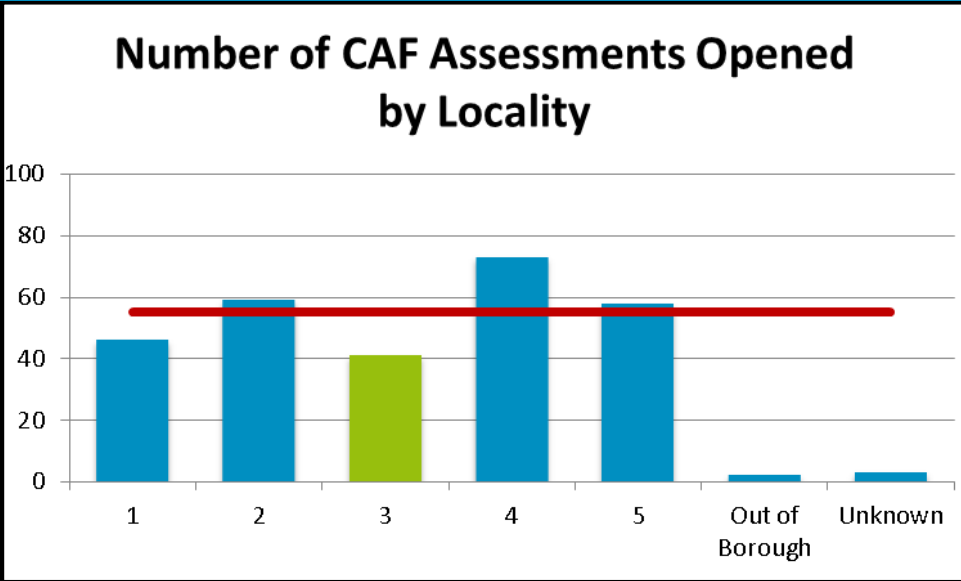
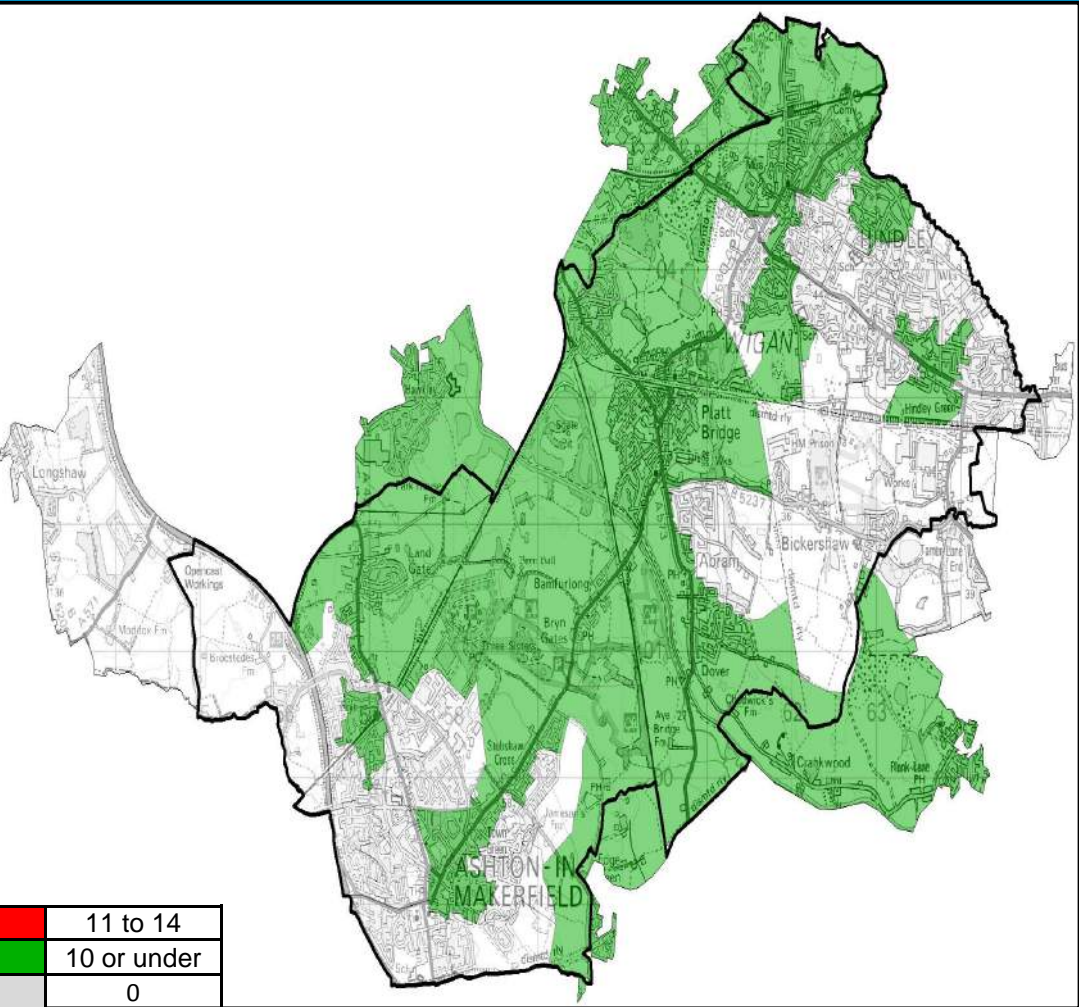
The average rate across all localities for Non-White British in population is 2.7%.

Wigan Council is in the first quartile for lowest rates of Non-White British when compared with statistical neighbours.

Locality Rank: 5th
Highest Concentration: Woodcock Drive Estate

4th	3rd	2nd	1st
-----	-----	-----	-----

CAF Assessments (Opened)



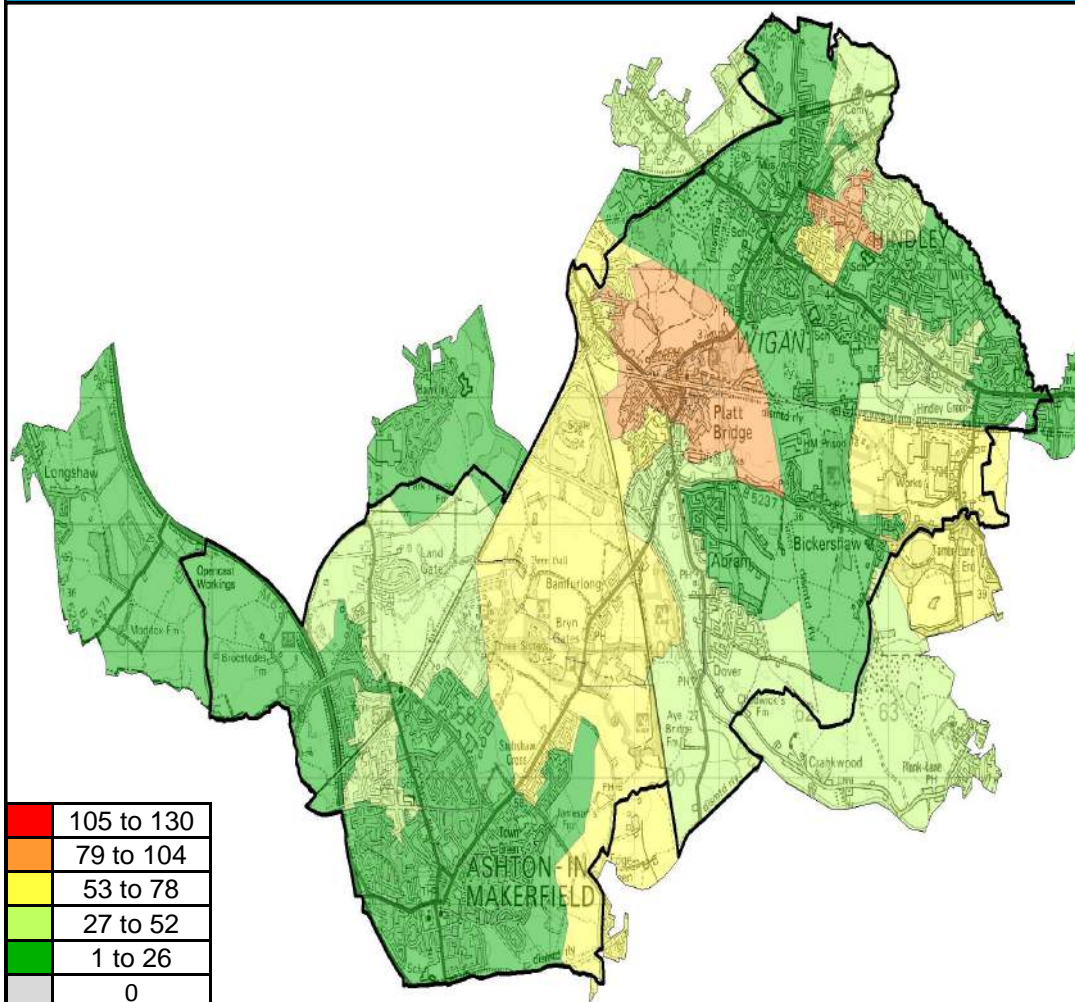
Overview

Locality 3 had the fewest number of CAF assessments opened across all localities with 41 assessments in 2013. The highest concentration of CAF assessments opened is Platt Bridge North.

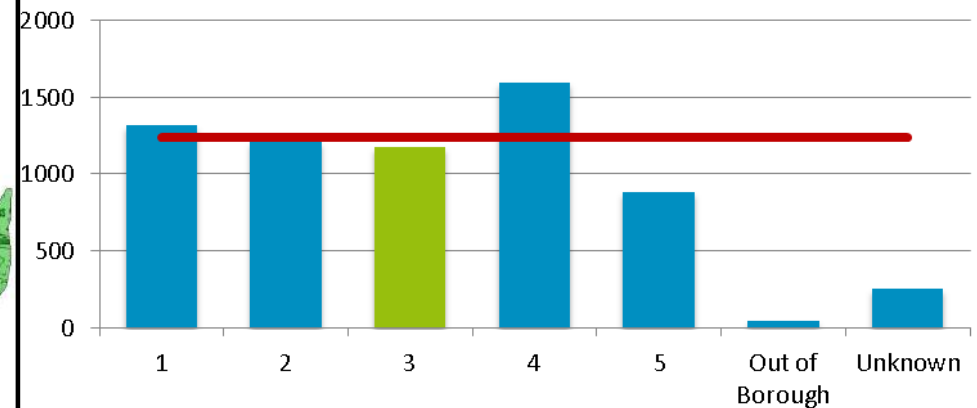
The average CAF assessments across all localities is 55.

Locality Rank: 5th
Highest Concentration: Platt Bridge North

Referrals to Children's Social Care



Number of Referrals to Children's Social Care by Locality



Overview

Locality 3 had the second lowest number of referrals to Children's Social Care in 2013 of all Wigan Council's localities with 1178 referrals.

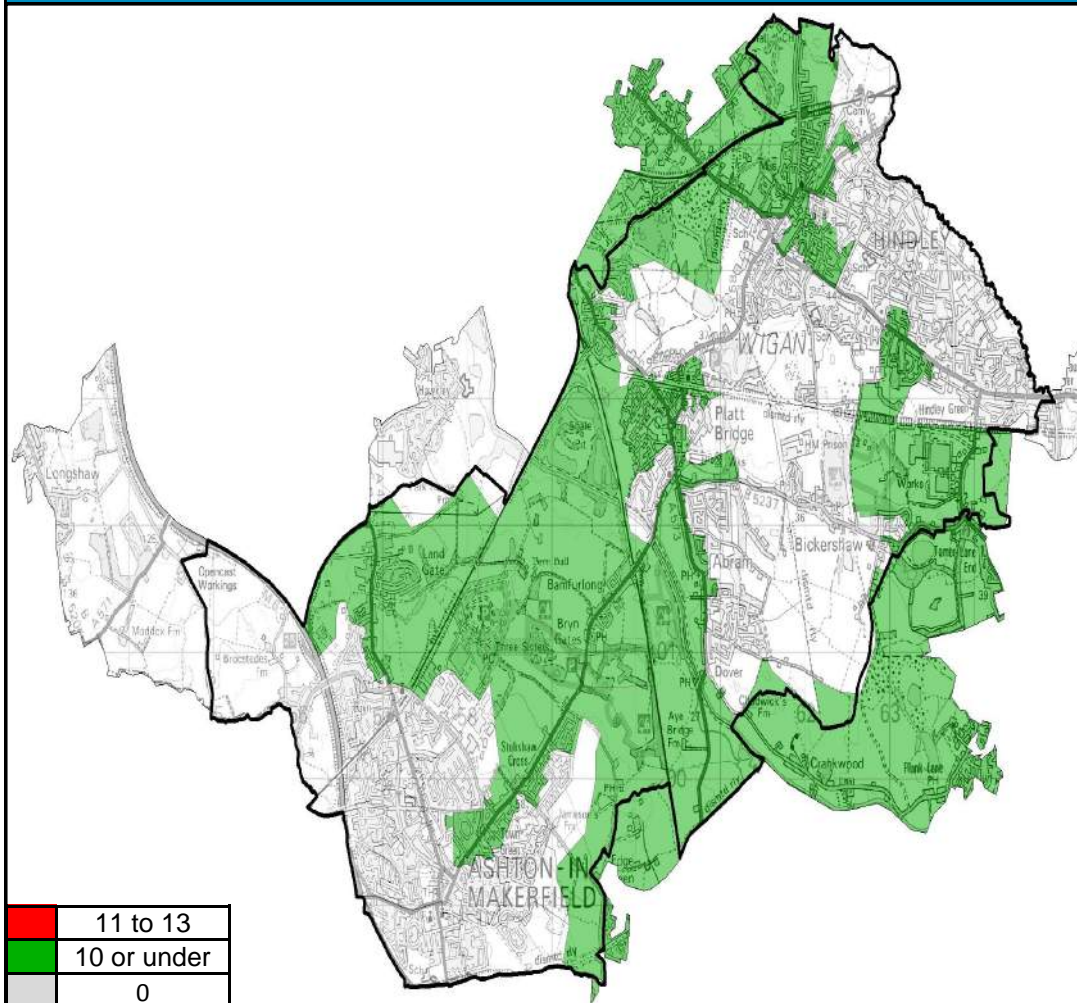
Platt Bridge North had the most referrals of any LSOA in the locality with 93 referrals.

The average number of referrals to Children's Social Care in 2013 across all of the borough's Localities was 1238.

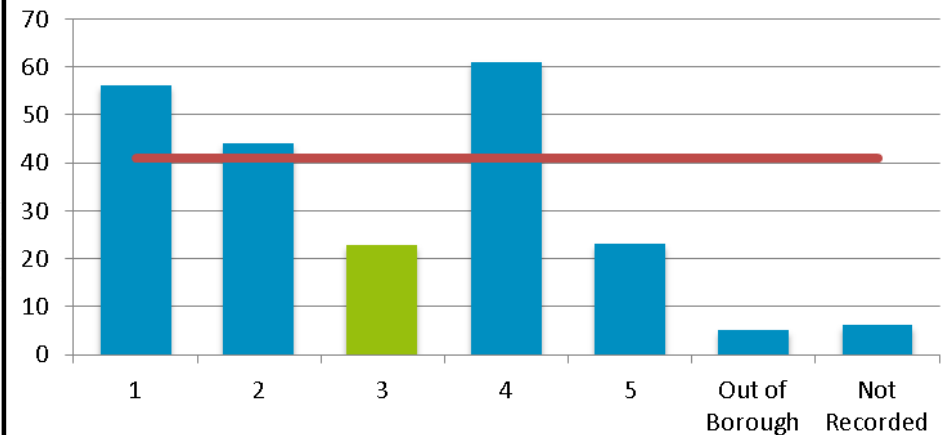
Locality Rank: 4th

Highest Concentration: Platt Bridge North

Child Protection Plans



Number of Children with a Child Protection Plan by Locality



Overview

Locality 3 has the joint lowest number of Children with a Protection Plan with 23 children identified.

The highest number of Children with a Protection Plan are situated in Platt Bridge North, Spring View and Hindley Centre.

The average number of Children with a Protection Plan across the 5 localities is 41 children.

Wigan Council is in the second quartile for rates of CPP when compared with statistical neighbours

4th

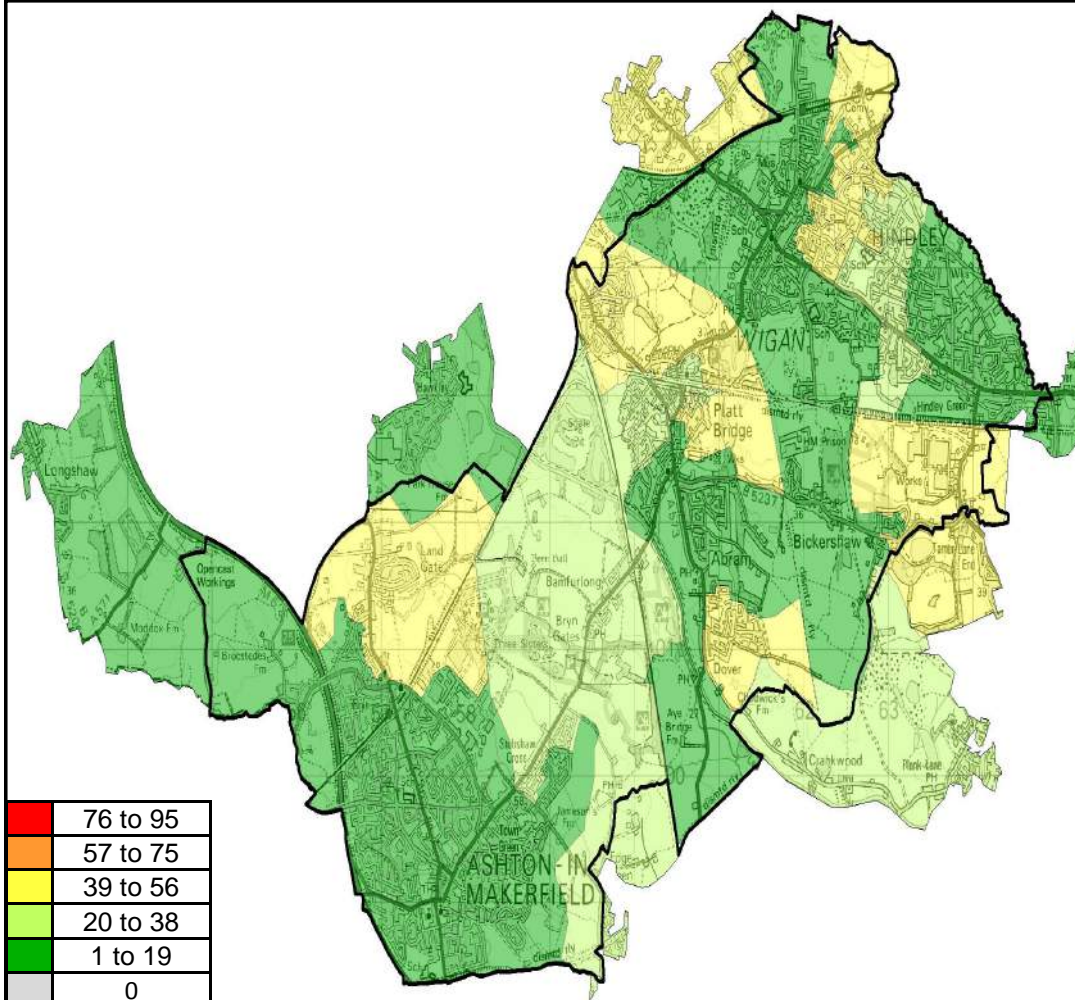
3rd

2nd

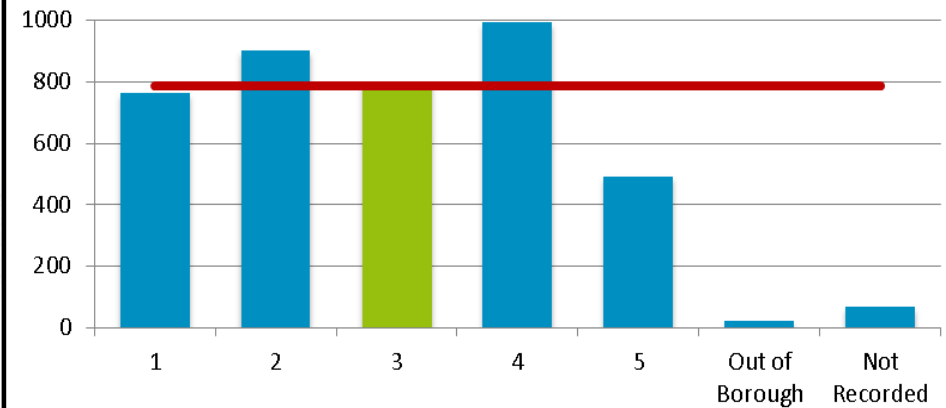
1st

Locality Rank: 5th*
Highest Concentration: 3 LSOAs

Gateway Referrals (Opened)



Number of Gateway Referrals Opened by Locality



Overview

Locality 3 had the third highest number of Gateway referrals opened in 2013 of all Wigan Council's localities with 794 opened.

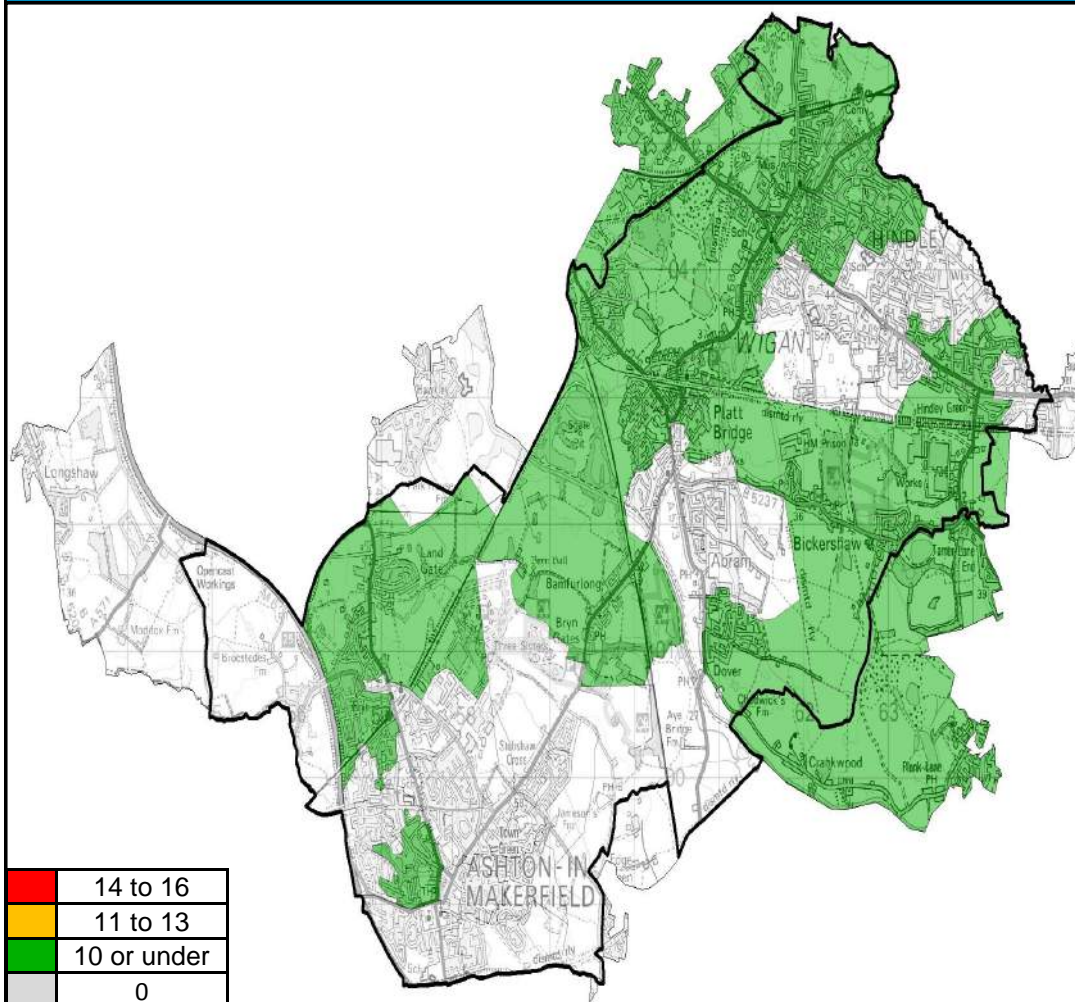
The area with most gateway referrals opened in 2013 is Woodcock Drive Estate which had 55 referrals opened.

The average number of opened gateway referrals in 2013 was 787.

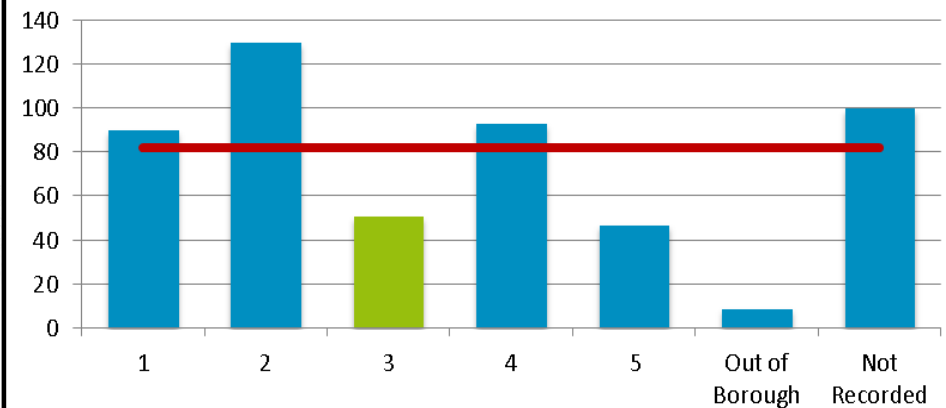
Locality Rank: 3rd

Highest Concentration: Woodcock Drive Estate

Looked After Children



Number of Looked After Children by Locality



Overview

Locality 3 has the second lowest number of Looked After Children of all Wigan Council's localities with 51 identified.

The highest number of Looked After Children are situated in Woodcock Drive Estate.

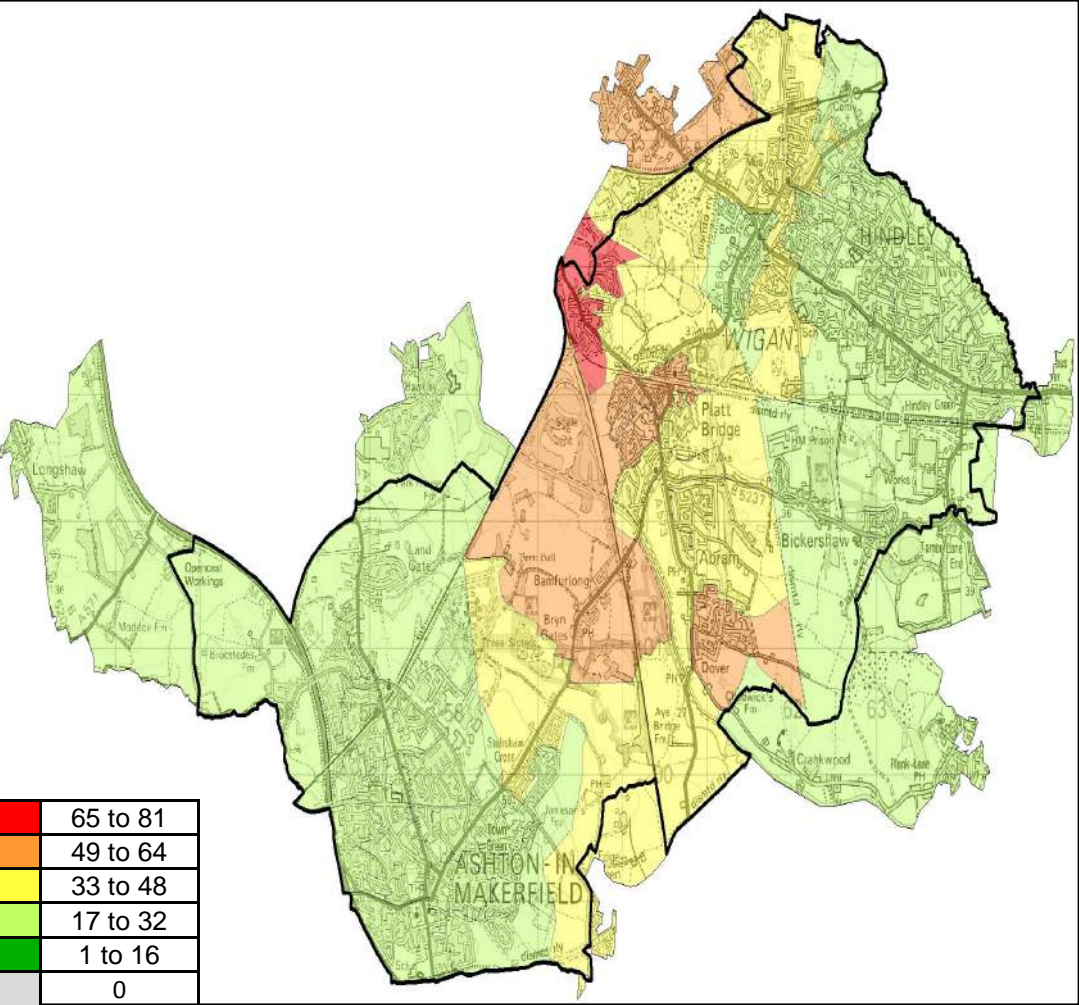
The average number of Looked After Children for all of the localities is 82 .

Wigan Council is in the second quartile for rates of LAC when compared with statistical neighbours

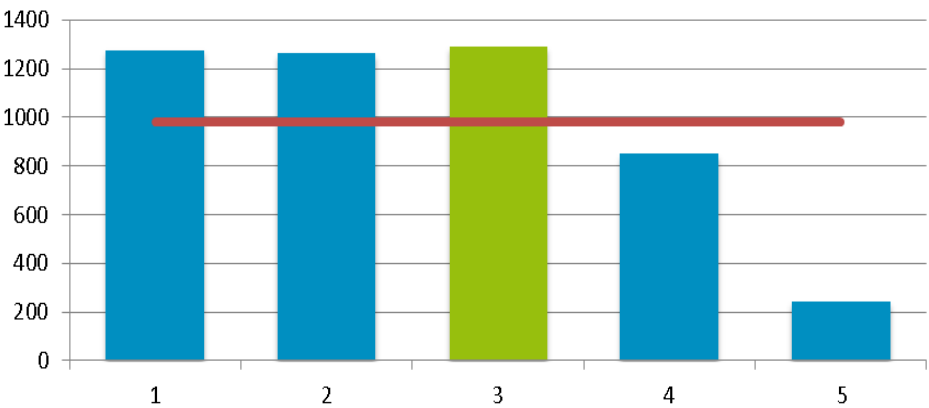
4th	3rd	2nd	1st
-----	-----	-----	-----

Locality Rank: 4th
Highest Concentration: Woodcock Drive Estate

A&E Attendances for Under 5s



Number of A&E Attendances for Under 5s by Locality



Overview

Locality 3 had the highest number of A&E attendances for under 5s between April 13 and February 14 of all Wigan Council's localities with 1292 attendances.

The areas with the highest number of attendances are closer to Wigan Hospital. Areas further away from the centre may visit other hospitals.

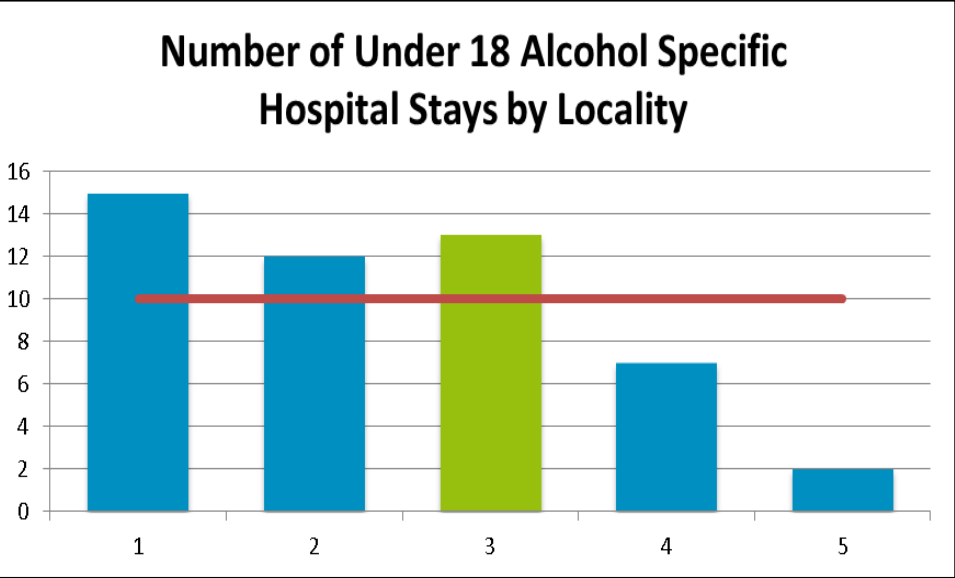
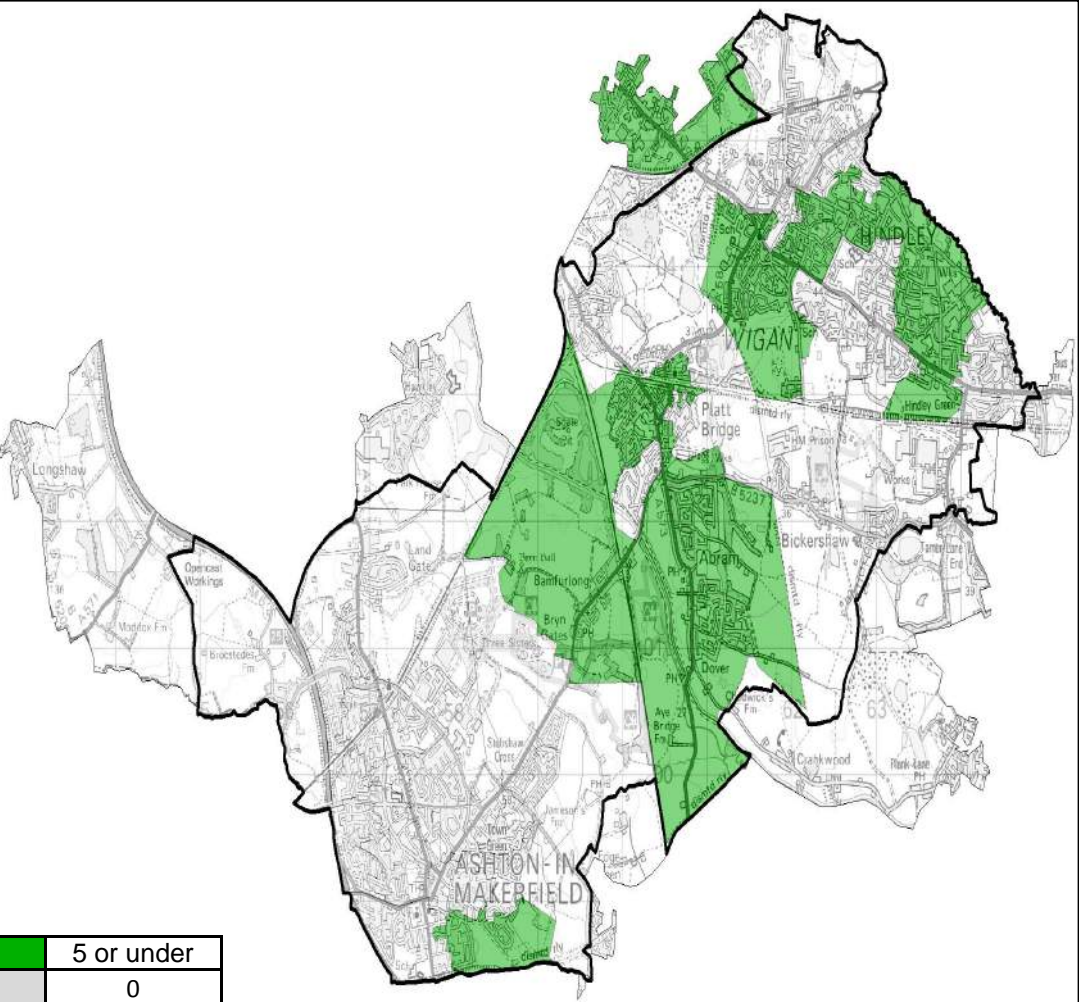
The average number of admissions across all of the Borough's Localities is 983.

Wigan Council is in the third quartile for rates of A&E Attendances for under 5s when compared with national averages

4th	3rd	2nd	1st
-----	-----	-----	-----

Locality Rank: 1st
Highest Concentration: Spring View

Alcohol Specific Hospital Stays for Under 18s



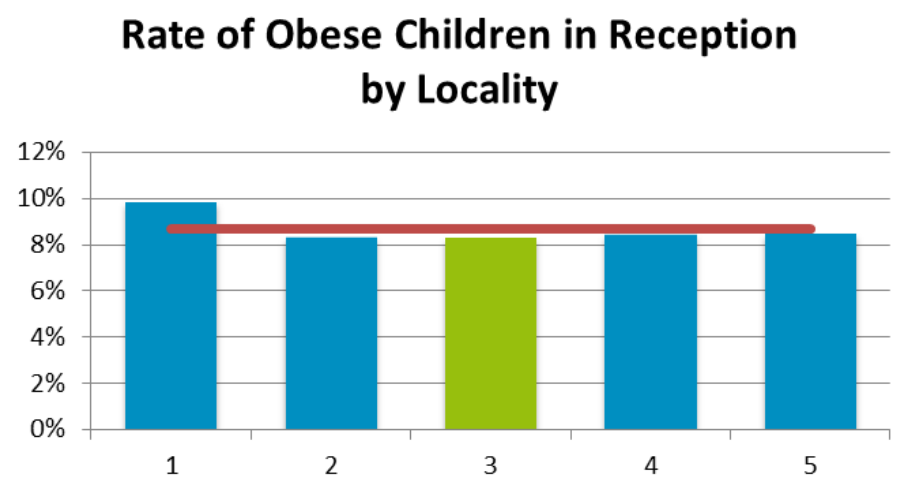
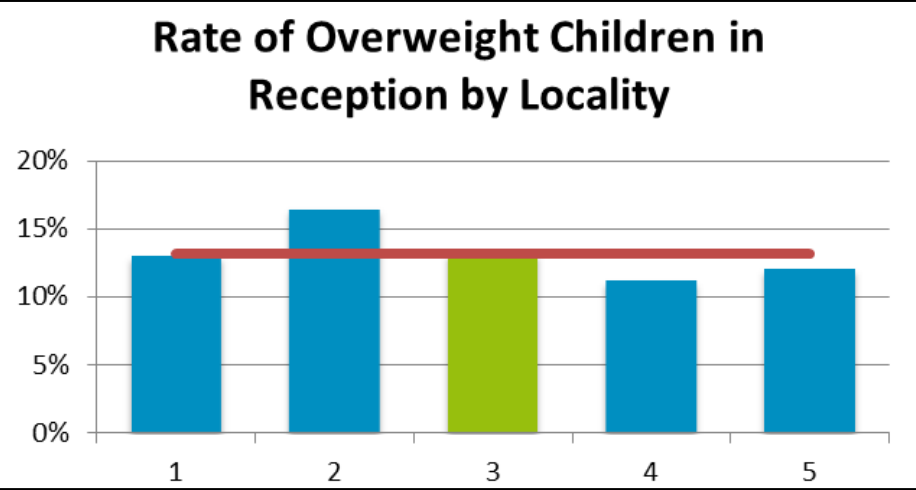
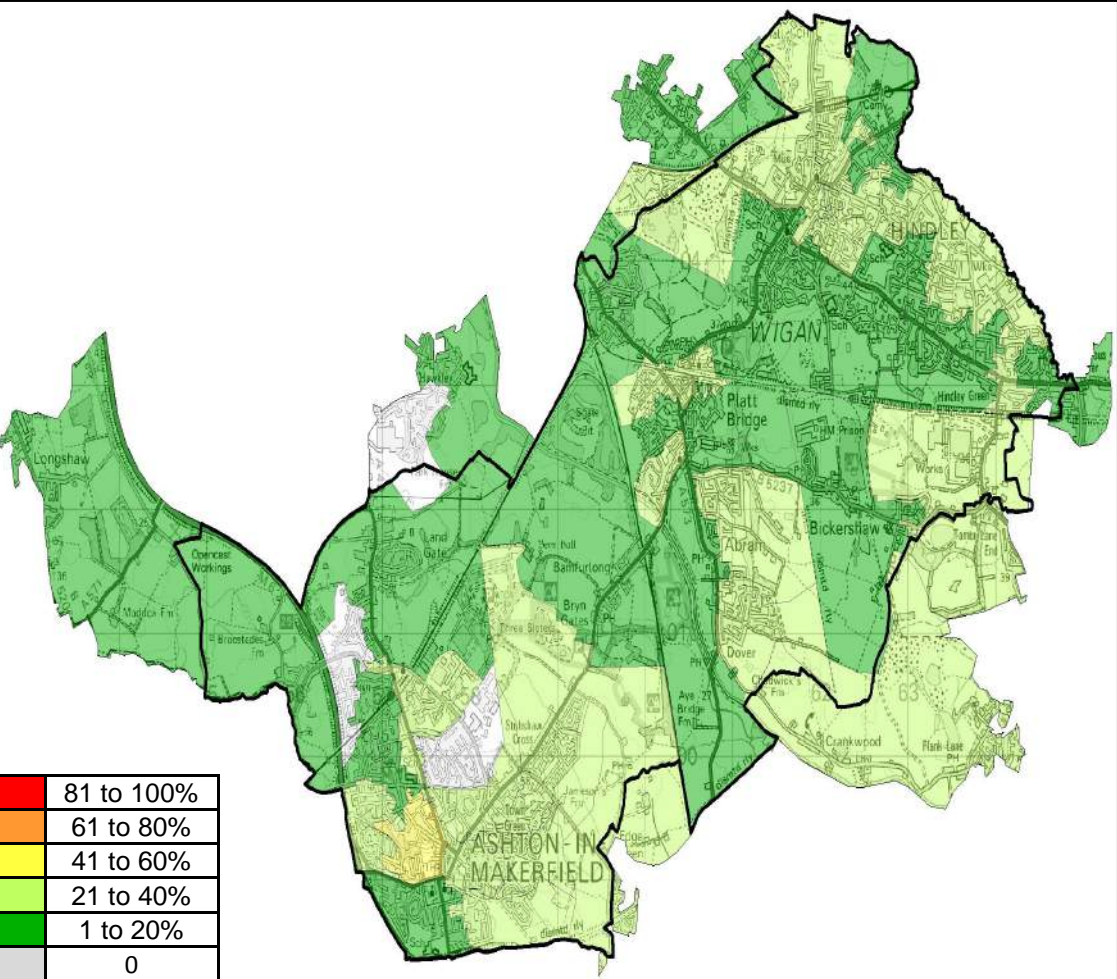
Overview

Locality 3 has the second highest number of Under 18 alcohol specific hospital stays with 13 hospital stays identified.

The average number of Under 18 alcohol specific hospital stays across all localities was 10.

Locality Rank: 2nd

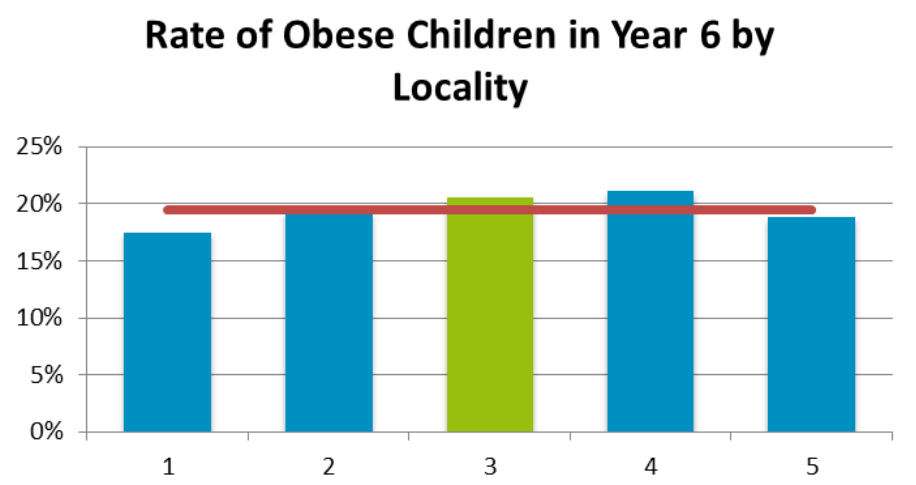
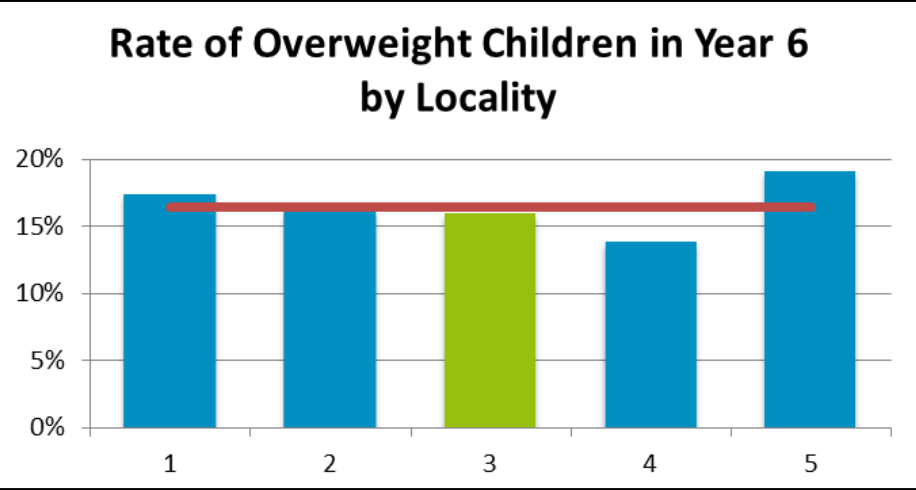
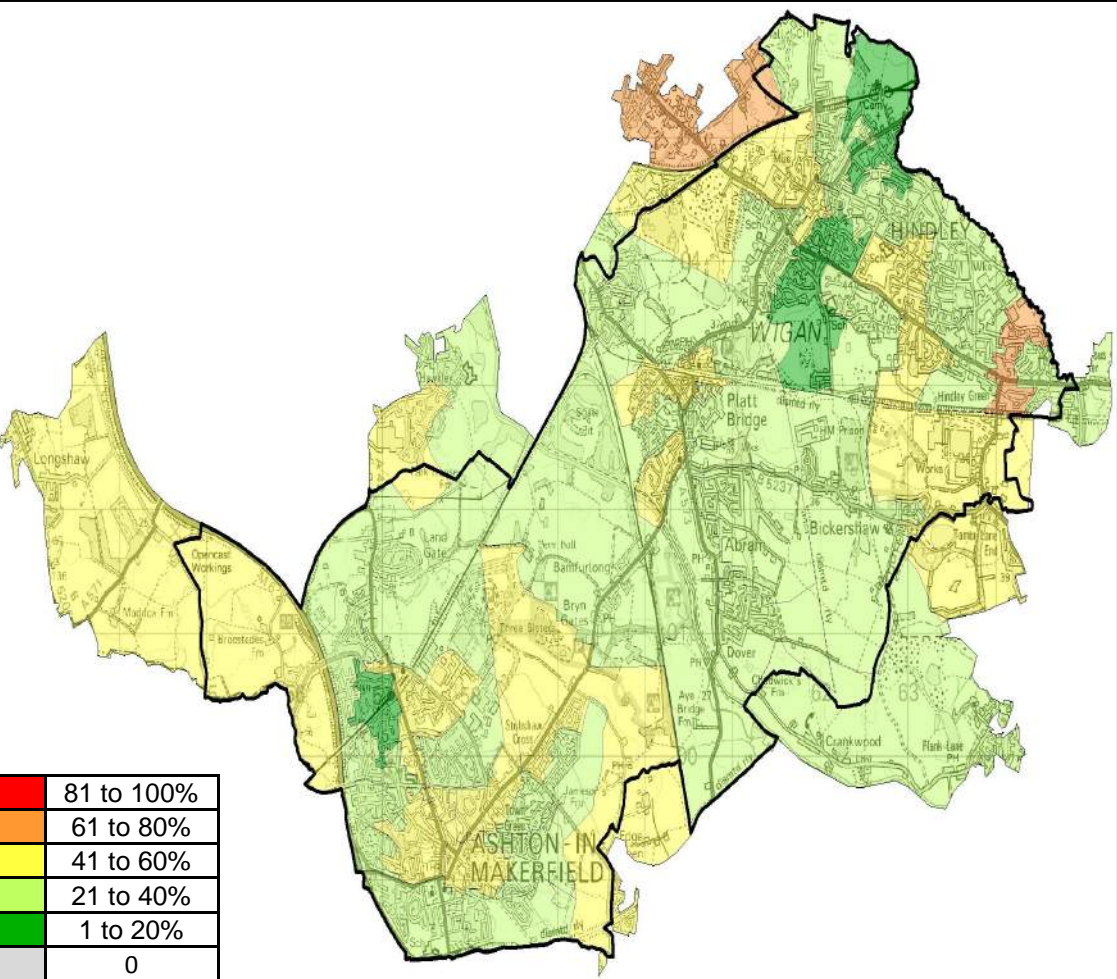
Child Obesity (Reception)



Overview		Locality 3 has the joint 3rd highest rate of overweight and obese children in reception when compared to other localities in the borough. Spring view has the highest concentration within locality 3.	
Wigan Council is in the second quartile for performance for rates of child obesity in reception when compared with national averages			
4th	3rd	2nd	1st

Locality Rank: 3rd
Highest Concentration: Millingford

Child Obesity (Year 6)



Overview

Locality 3 has the joint second lowest overweight and obese children in Year 6. However, Locality 3 has one of the highest rates of obese children, a more severe overweight category, with the highest concentration in Spring View.

Wigan Council is in the second quartile for performance for rates of child obesity in year 6 when compared with national averages

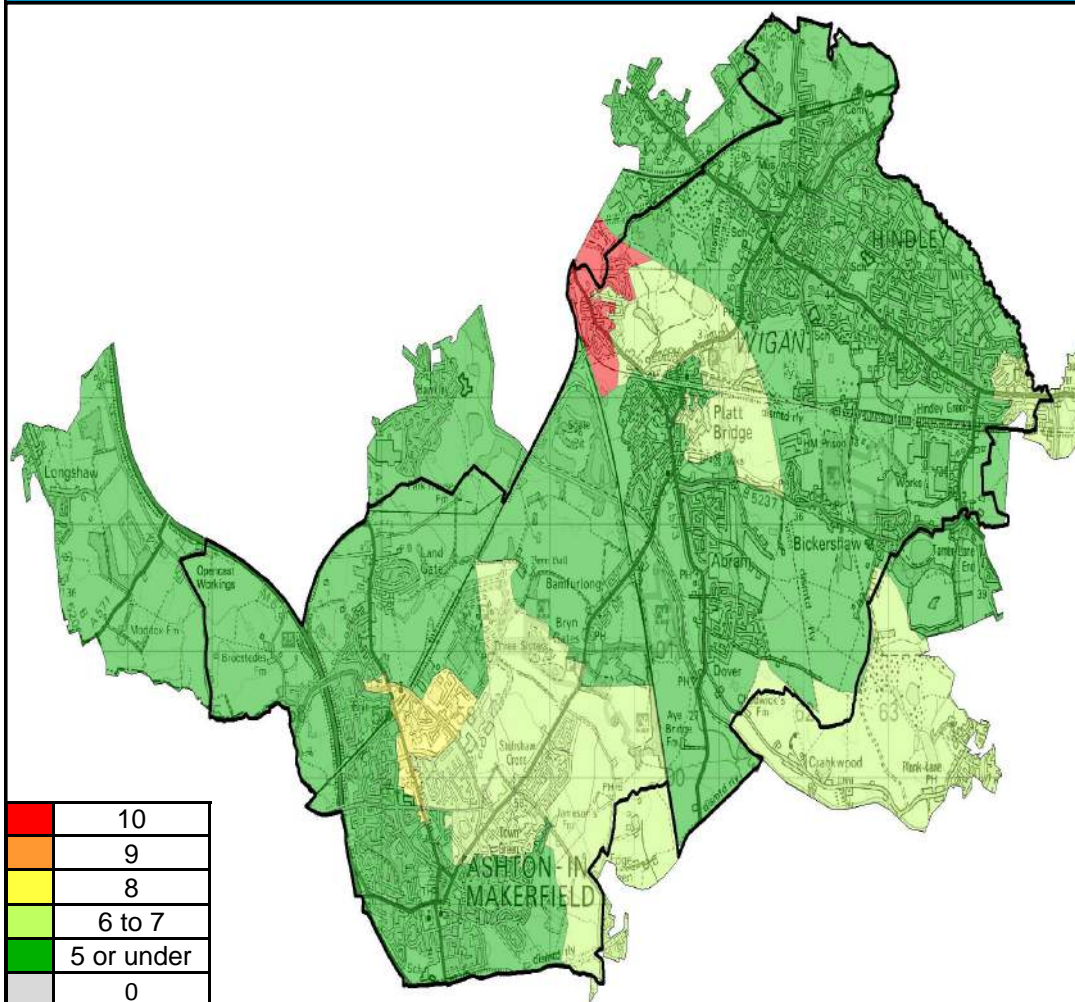
4th	3rd	2nd	1st
-----	-----	-----	-----

Locality Rank: 2nd

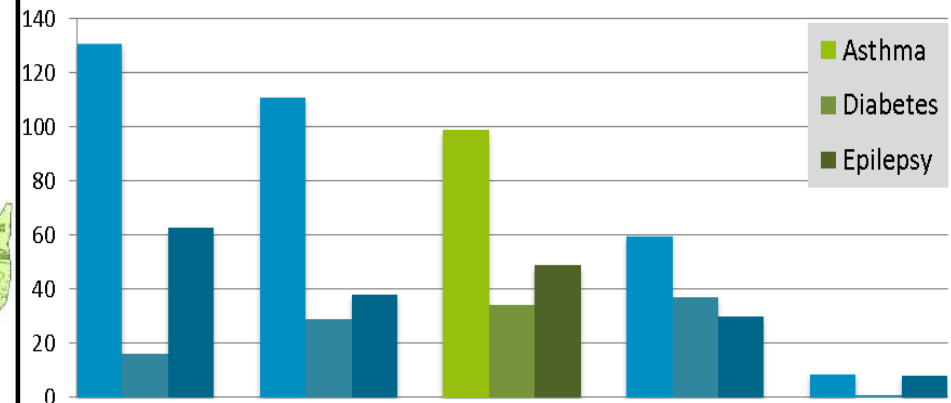
Highest Concentration:

Hindley Green/ Leigh Road

Non-Elective Admissions of Children with a Long-term Condition



Non-Elective Admissions of Children with a Long Term Condition by Locality



Overview

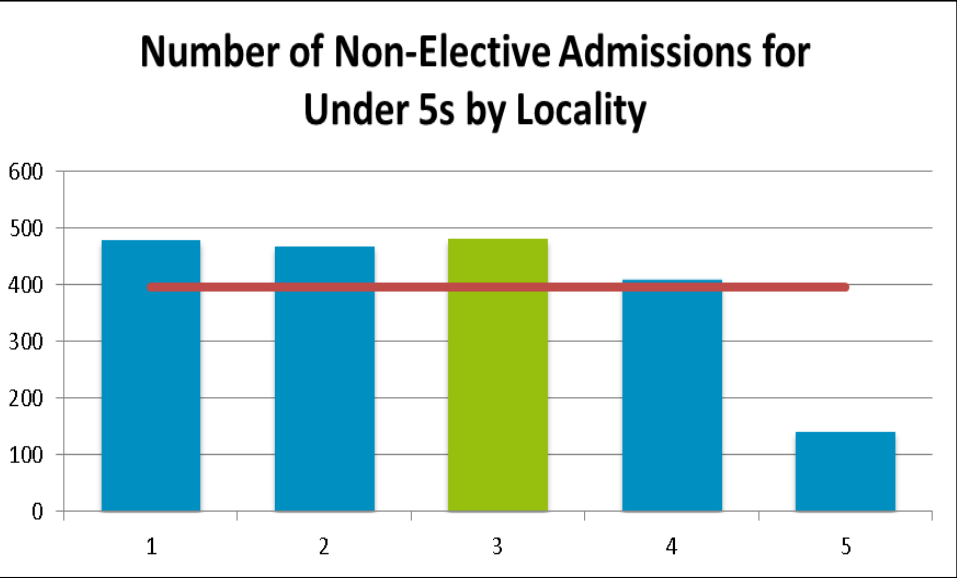
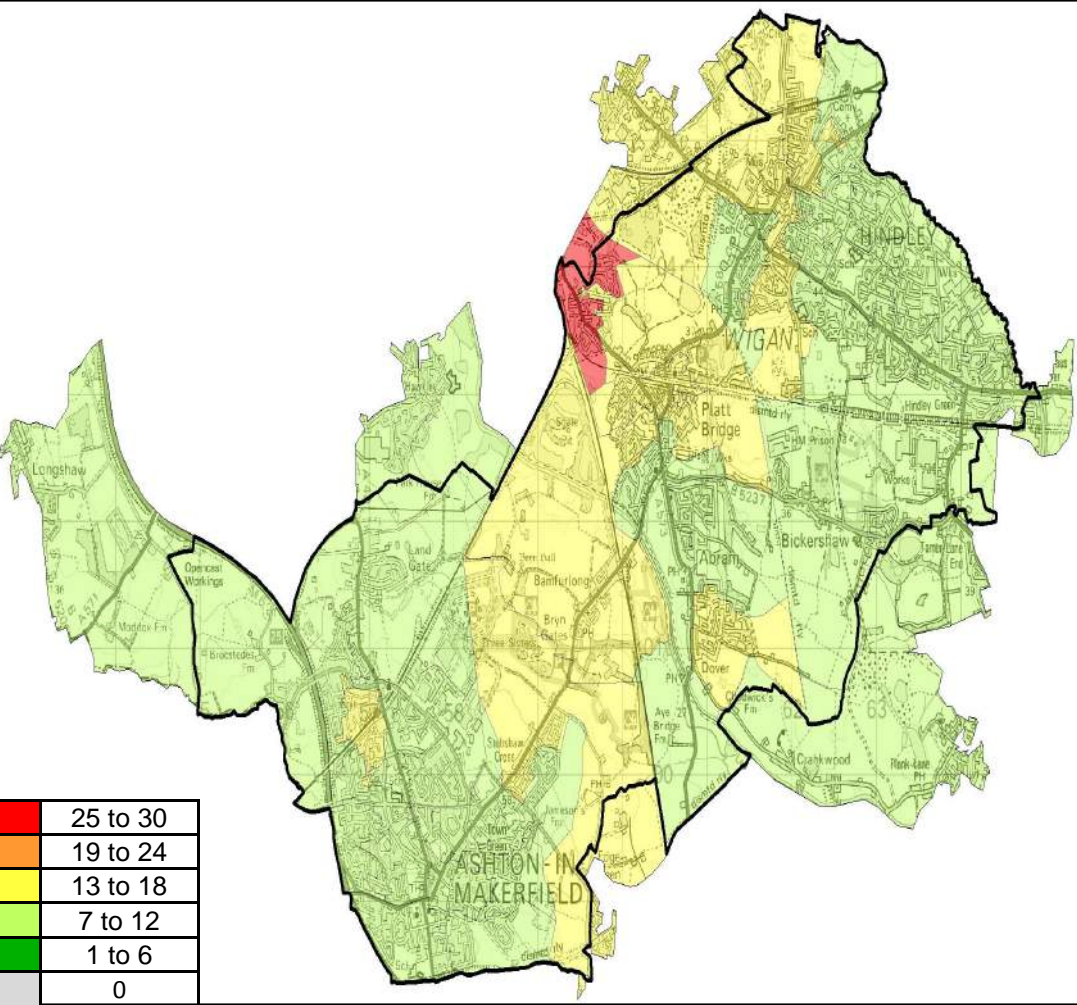
Locality 3 has the second highest number of identified Non-Elective Admissions of Children with a Long Term condition of all Wigan Council's localities with 182 identified.

Spring View has the highest concentration of Non-Elective Admissions of Children with a Long Term condition within locality 3.

The average number of identified Non-Elective Admissions of Children with a Long Term condition of all Wigan Council's localities was 143 admissions.

Locality Rank: 2nd
Highest Concentration: Spring View

Non-elective Admissions for Under 5s



Overview

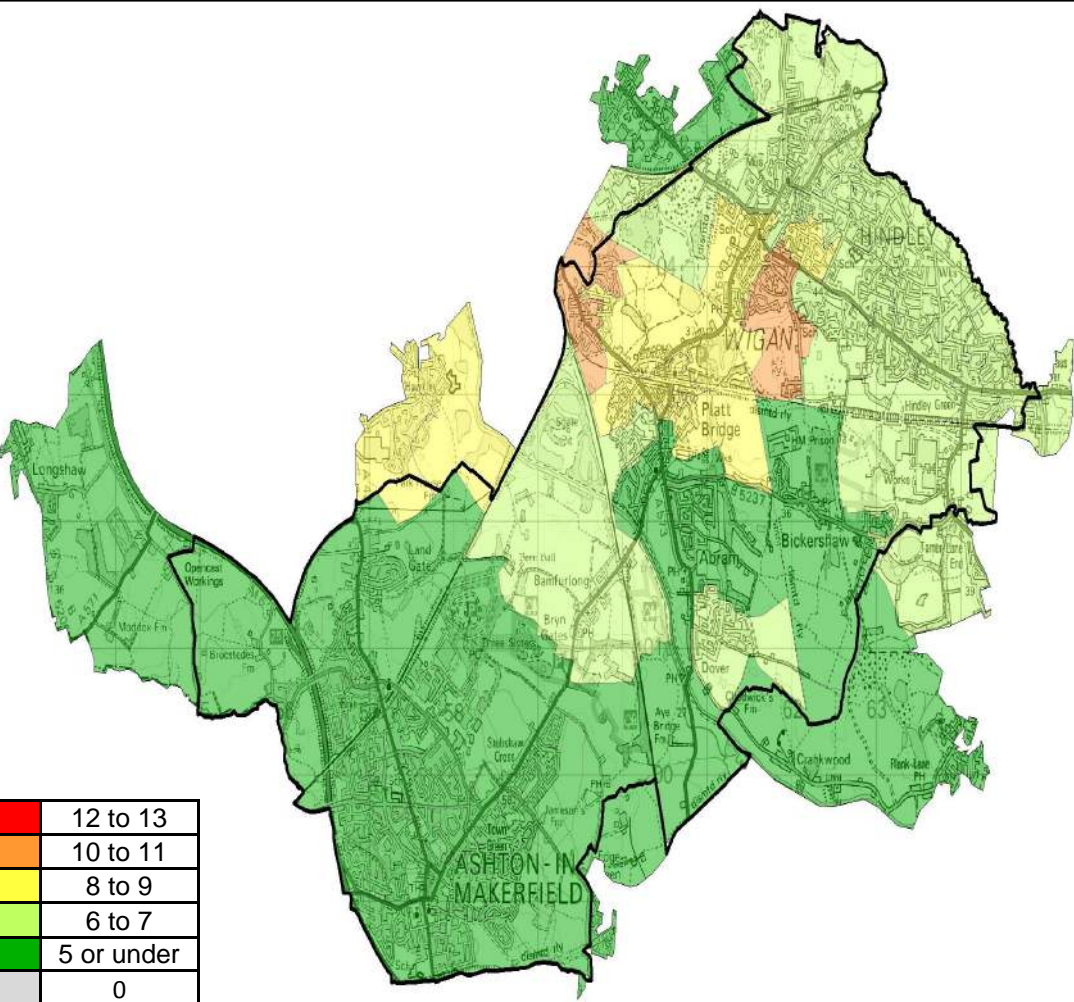
Locality 3 had the highest number of non-elective admissions for under 5s between April 13 and February 14 of all Wigan Council's localities with 481 admissions.

The areas with the highest number of admissions are closer to Wigan Hospital. Areas further away from the centre may visit other hospitals.

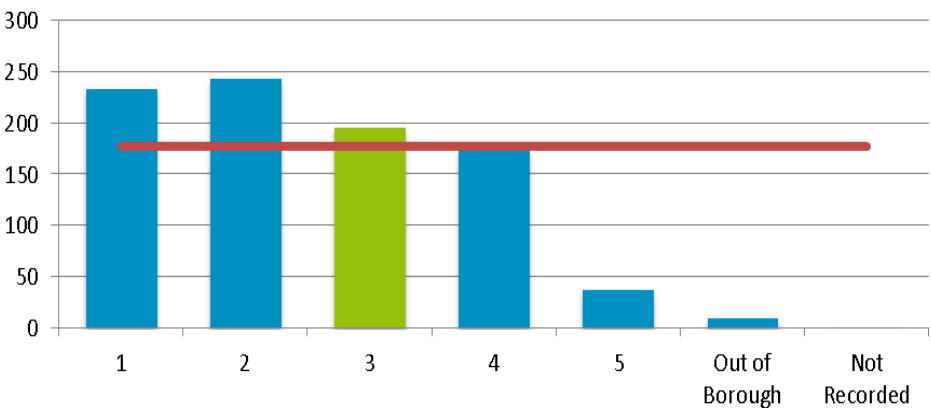
The average number of admissions across all of the Borough's Localities is 396.

Locality Rank: 1st
Highest Concentration: Spring View

Non-elective Activity for Intentional and Unintentional Injuries



Total of Non-Elective Activity Intentional and Unintentional Injuries by Locality



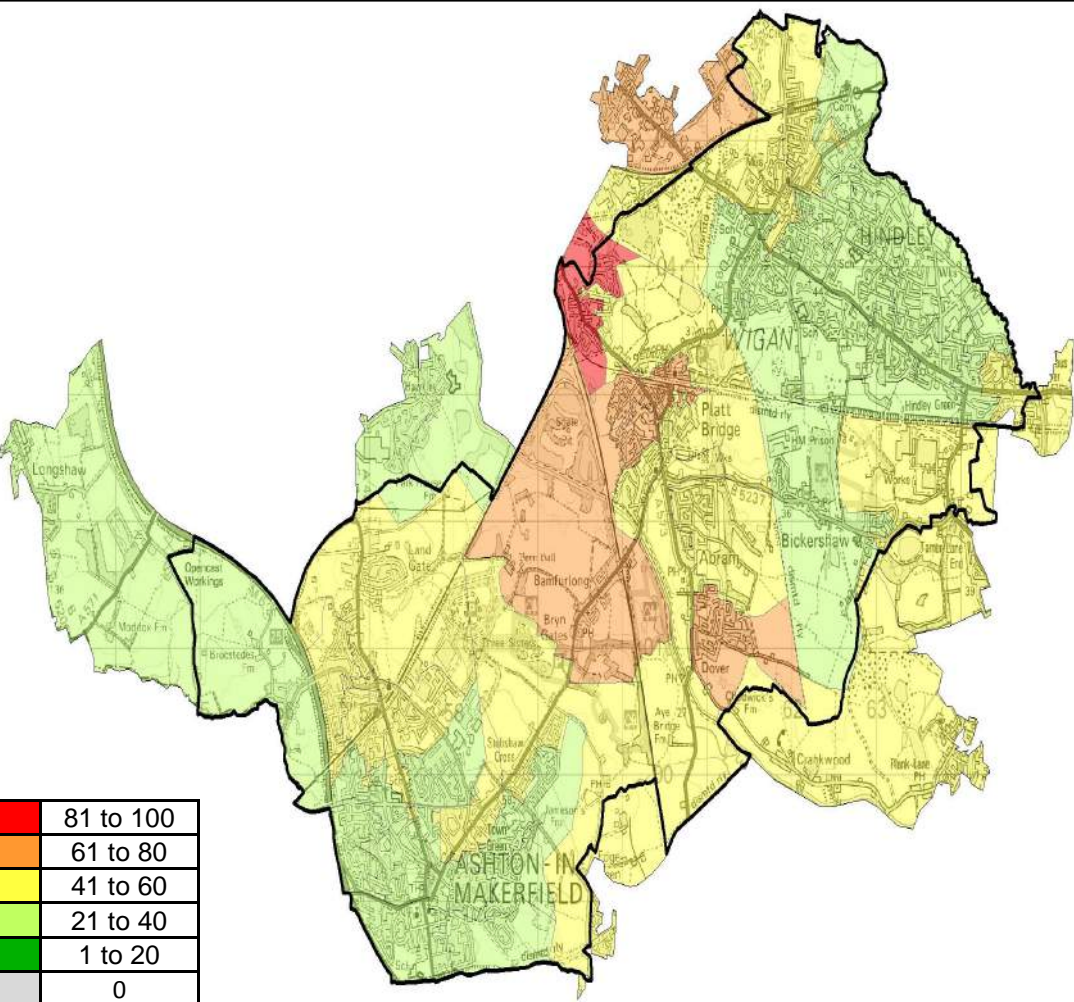
Overview

Locality 3 has the third highest number of Non-Elective activity intentional and unintentional injuries with 196 injuries. The highest concentration is Spring View with 11 injuries .

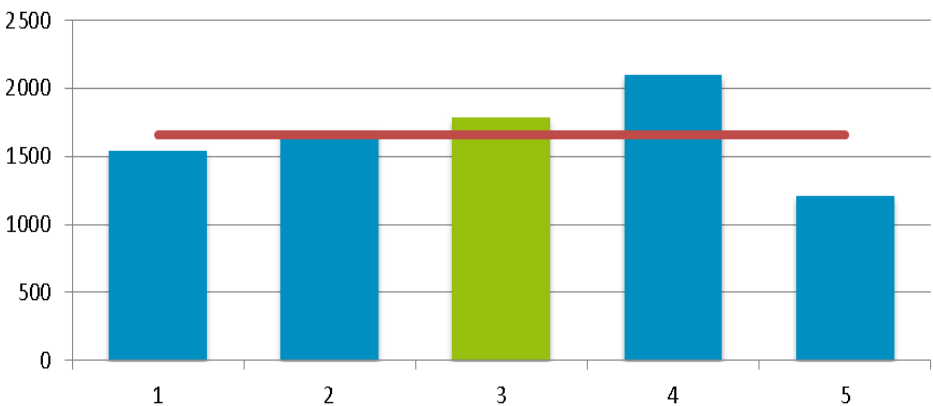
The average number of Non-Elective activity intentional and unintentional injuries across all localities is 177.

Locality Rank: 3rd
Highest Concentration: Spring View

Outpatient Appointments for Under 5s



Number of Outpatient Appointments for Under 5s by Locality



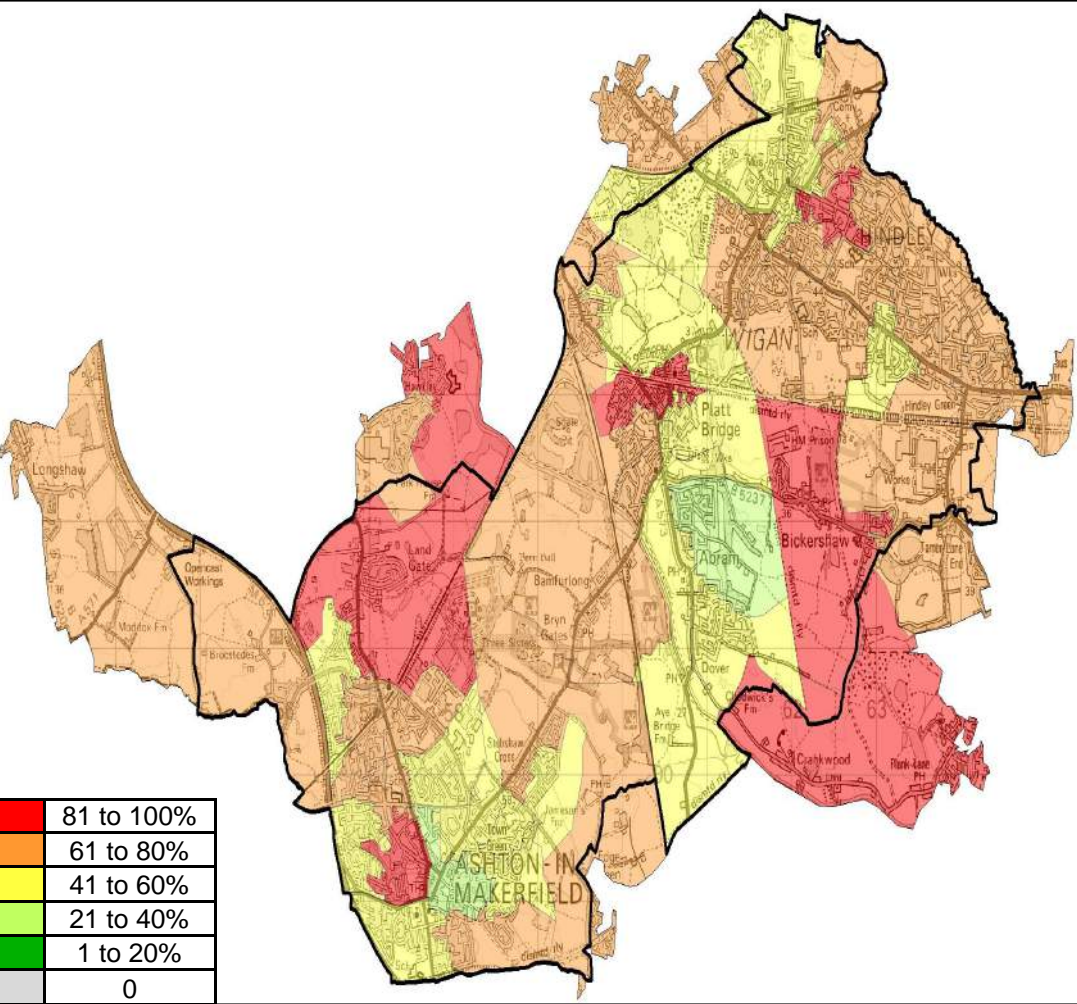
Overview

Locality 3 has the second highest number of Outpatient Appointments for Under 5s with 1787 children identified. The highest concentration of Outpatient Appointments for Under 5s is Spring View with 97 children.

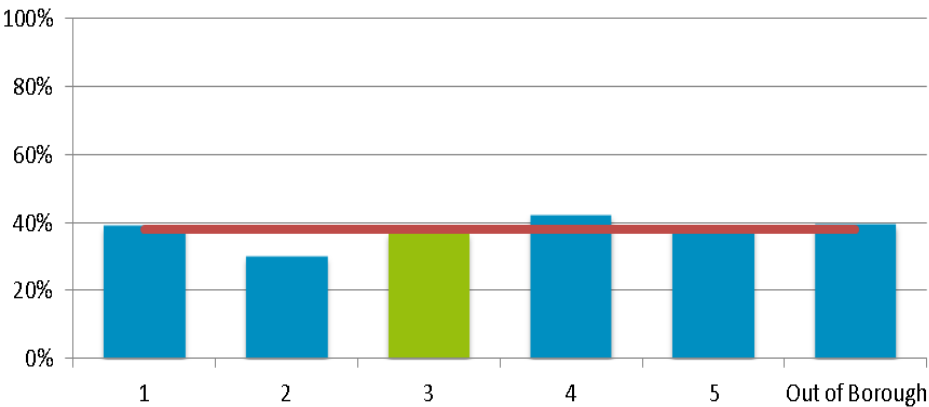
The average number of Outpatient Appointments for Under 5s across all localities is 1662.

Locality Rank: 2nd
Highest Concentration: Spring View

EYFSP—Children Showing a Good Level of Development



Rate of Children Showing a Good Level of Development at EYFSP by Locality



Overview

Locality 3 has the second lowest rate of children showing a good level of development at EYFSP by locality with 37% comparable to the borough average of 38%. Plank Lane/ Crankwood has the lowest concentration of children showing a good level of development at EYFSP within locality 1.

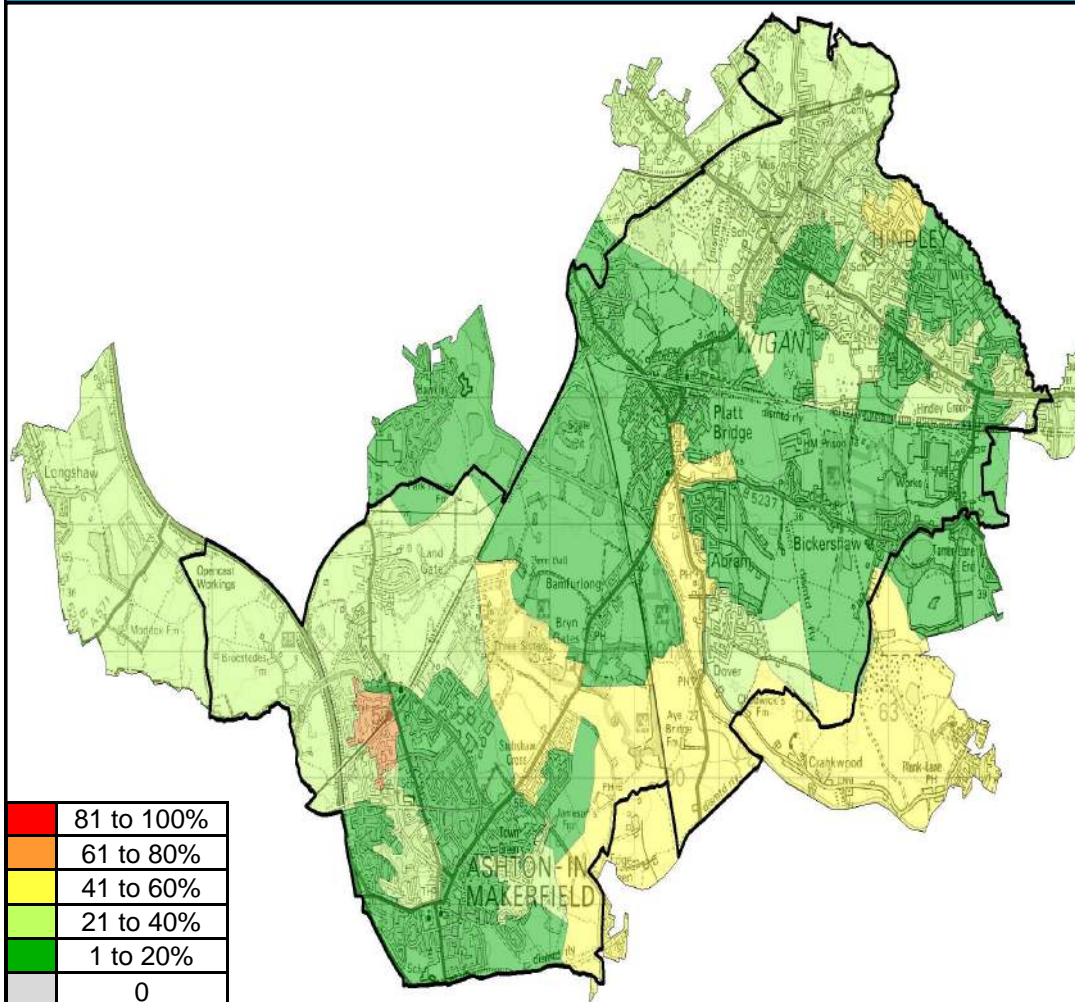
Wigan Council is in the bottom quartile for performance for rates of Children showing a good level of development when compared with statistical neighbours

4th	3rd	2nd	1st
-----	-----	-----	-----

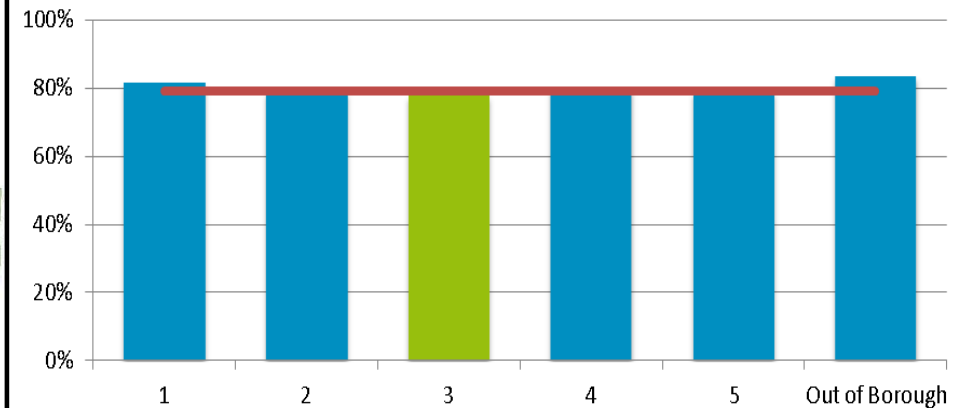
Locality Rank: 2nd

Lowest Concentration: Plank Lane / Crankwood

Attainment at Key Stage 2



Rate of Children Achieving Level 4 Reading, Writing and Maths at KS2 by Locality



Overview

Locality 3 has the lowest rate of children achieving level 4 in Reading, Writing and maths at key stage 2 with 78%. The lowest concentration within locality 3 is Wentworth.

The average across all localities is 79%.

Wigan Council is in the top quartile for performance for attainment at KS2 when compared with statistical neighbours

4th

3rd

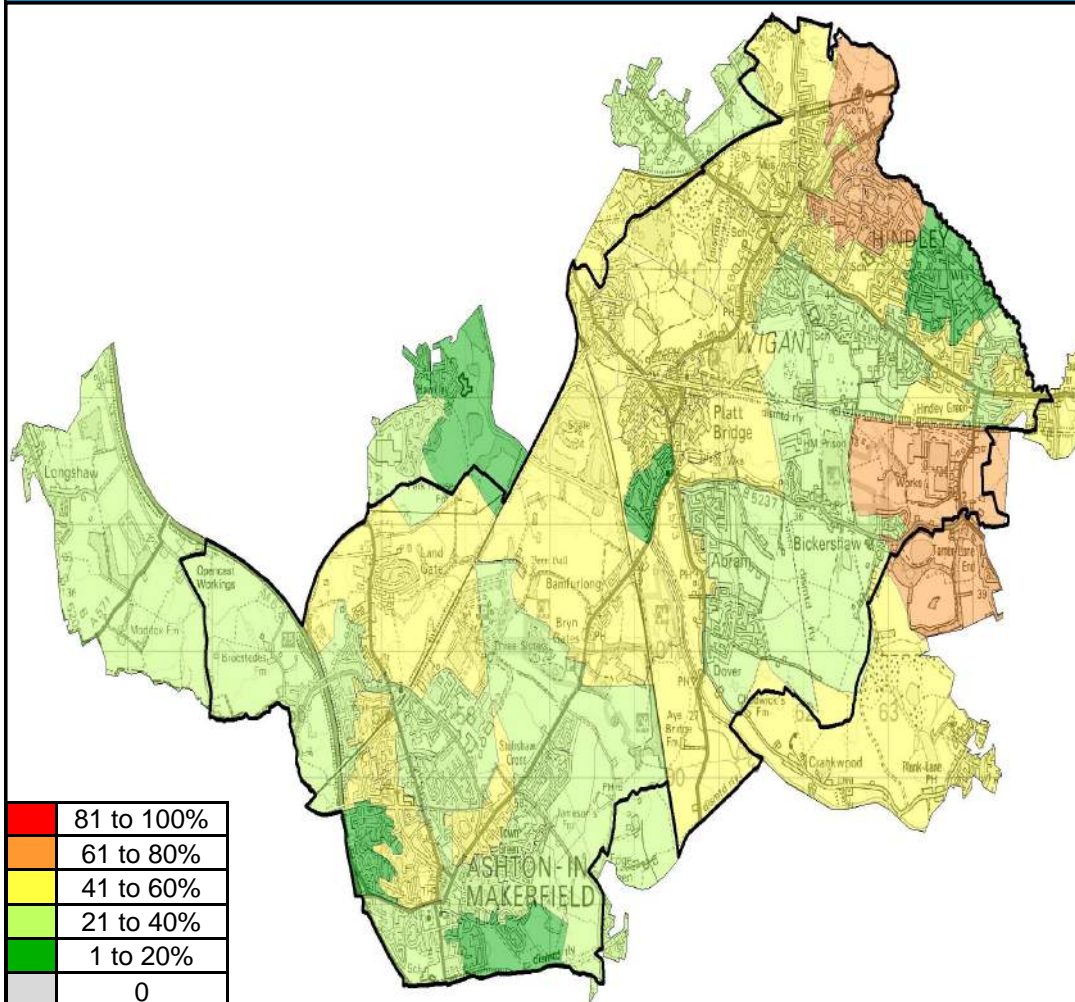
2nd

1st

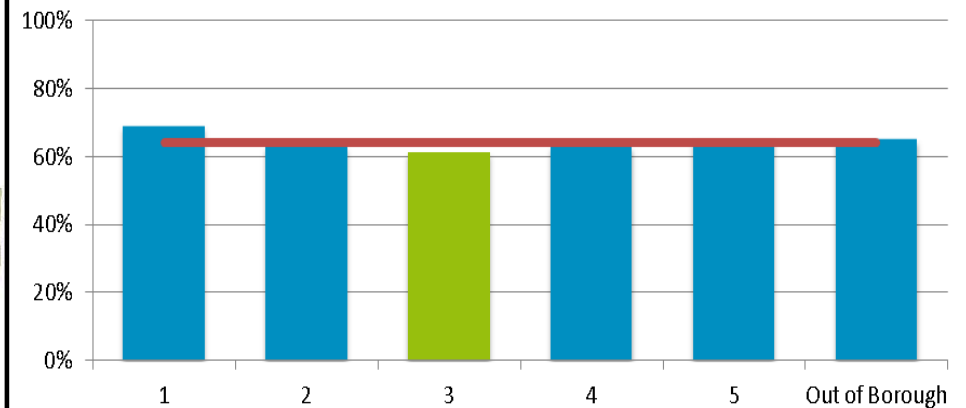
Locality Rank: 1st

Lowest Concentration: Wentworth

Attainment at Key Stage 4



Rate of Children Achieving 5 A*-C GCSEs at KS4 by Locality



Overview

Locality 3 has the lowest rate of children achieving 5A*-C GCSEs at KS4 by locality with 61%. The lowest concentration within locality 3 is Lower Castle Hill with 27%.

The average across all localities is 64%.

Wigan Council is in the first quartile for rates of attainment at KS4 when compared with statistical neighbours.

Locality Rank: 1st
Lowest Concentration: Castle Hill

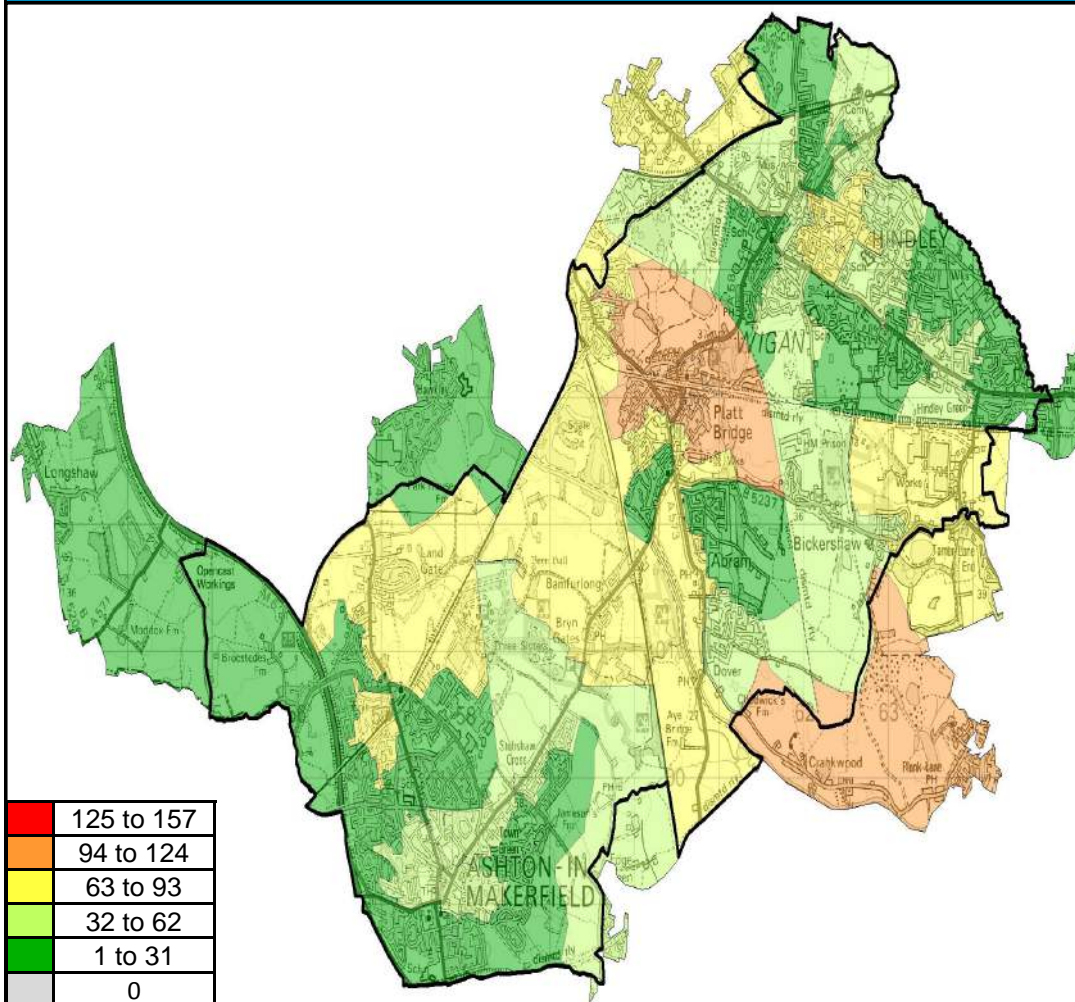
4th

3rd

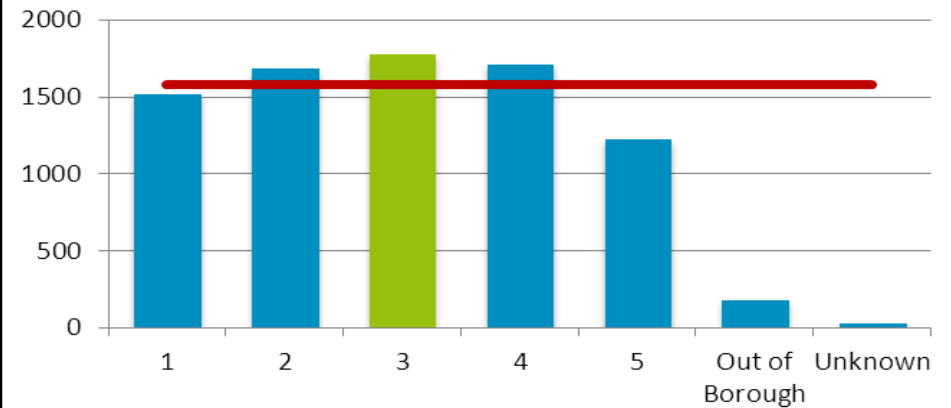
2nd

1st

Eligibility for Free School Meals



Number of Children Eligible for Free School Meals by Locality



Overview

Locality 3 has the highest number of children that are eligible for free school meals with 1773 eligible as at January 2014.

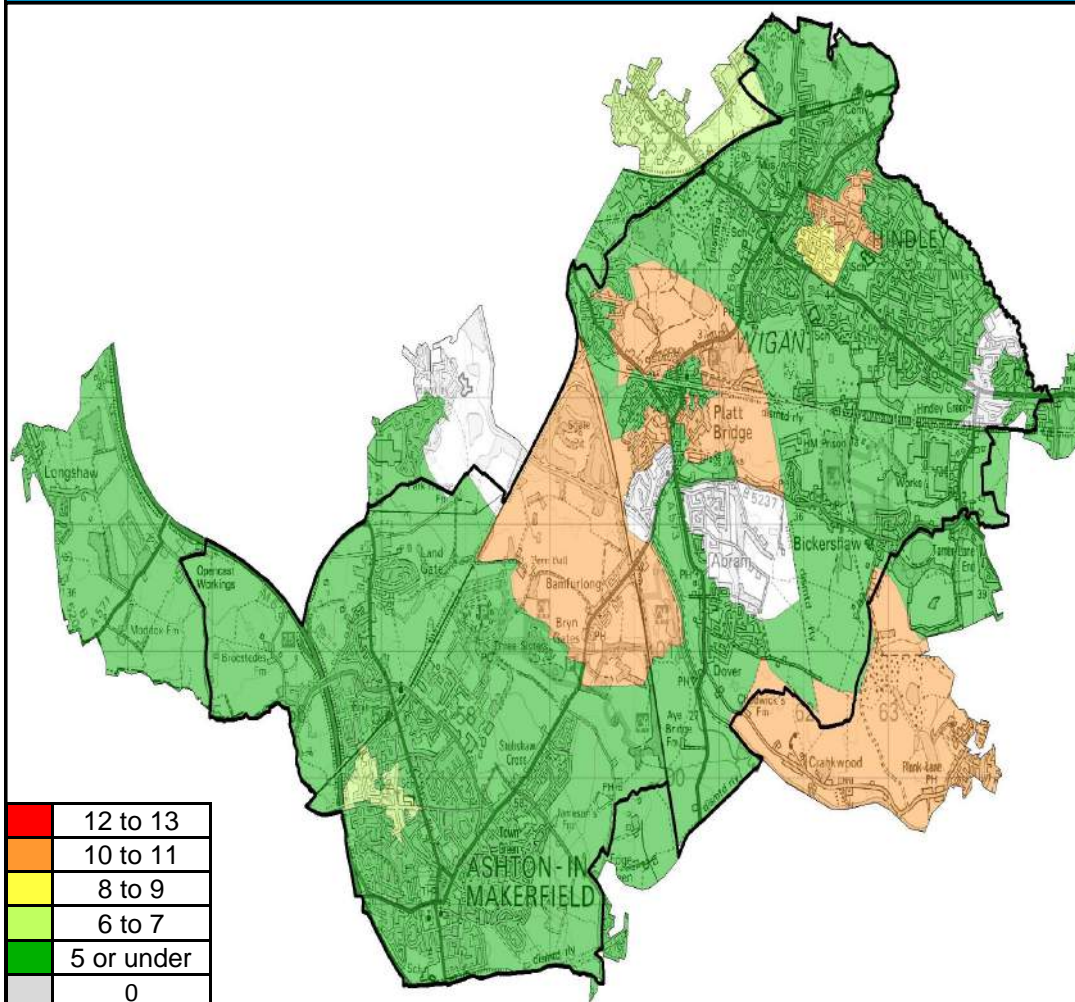
Plank Lane / Crankwood has the highest concentration of eligible children with 120 children eligible for free school meals.

The Locality average is 1579 eligible children.

Locality Rank: 1st

Highest Concentration: Plank Lane / Crankwood

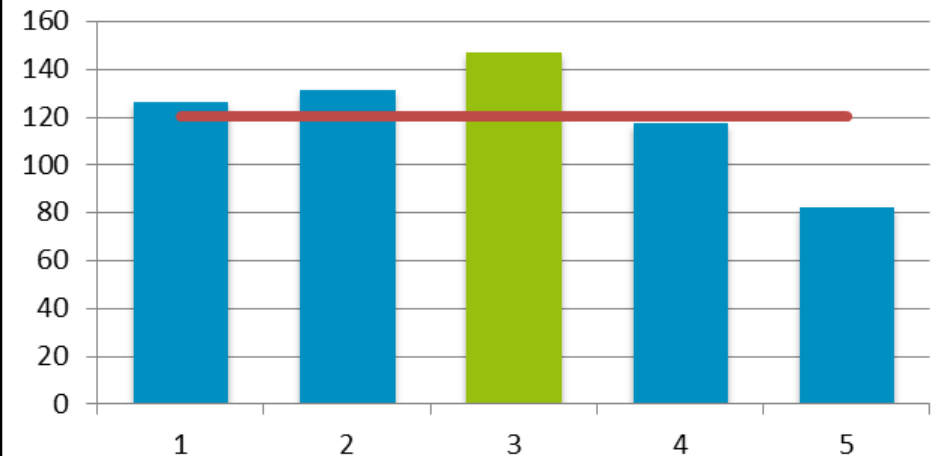
NEET (16-18)



Locality Rank: 1st

Highest Concentration: Platt Bridge Northeast & Plank Lane / Crankwood

Number of NEET 16-18 by Locality



Overview

Locality 3 has the highest number of identified NEET 16-18 year olds of all Wigan Council's localities with 147 identified.

Platt Bridge North East and Plank Lane/Crankwood have the highest number of NEET in the borough.

The average across the borough is 121.

Wigan Council is in the second quartile for rates of NEET (16-18) when compared with statistical neighbours.

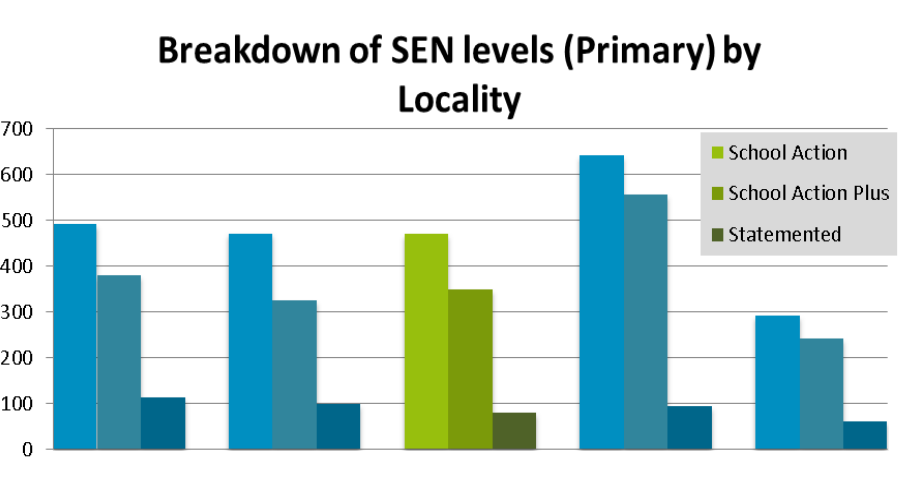
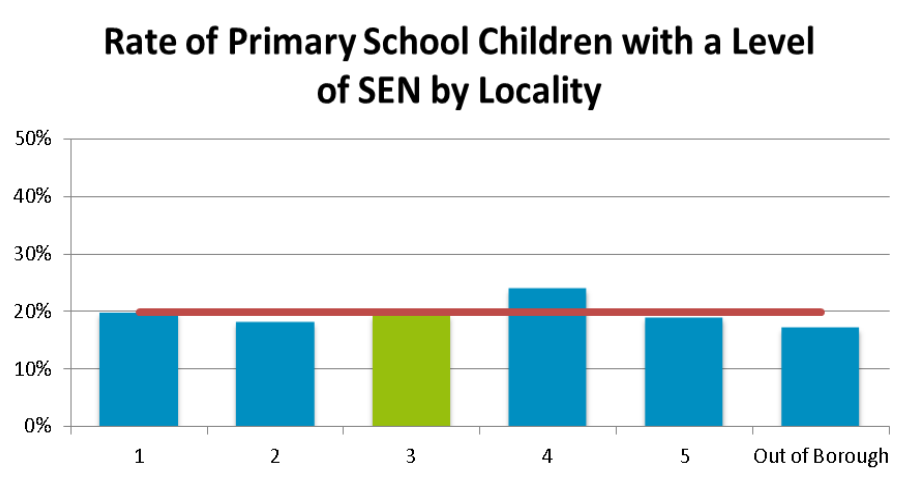
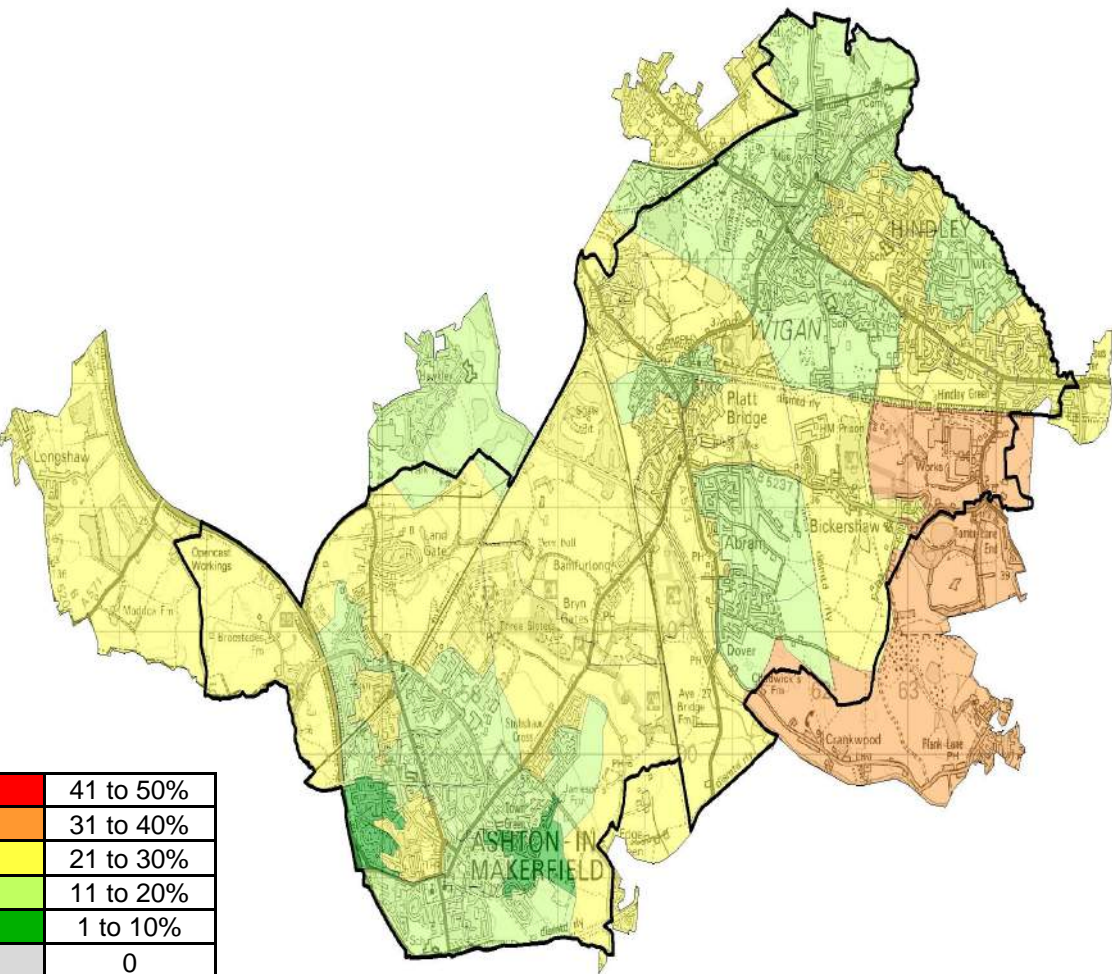
4th

3rd

2nd

1st

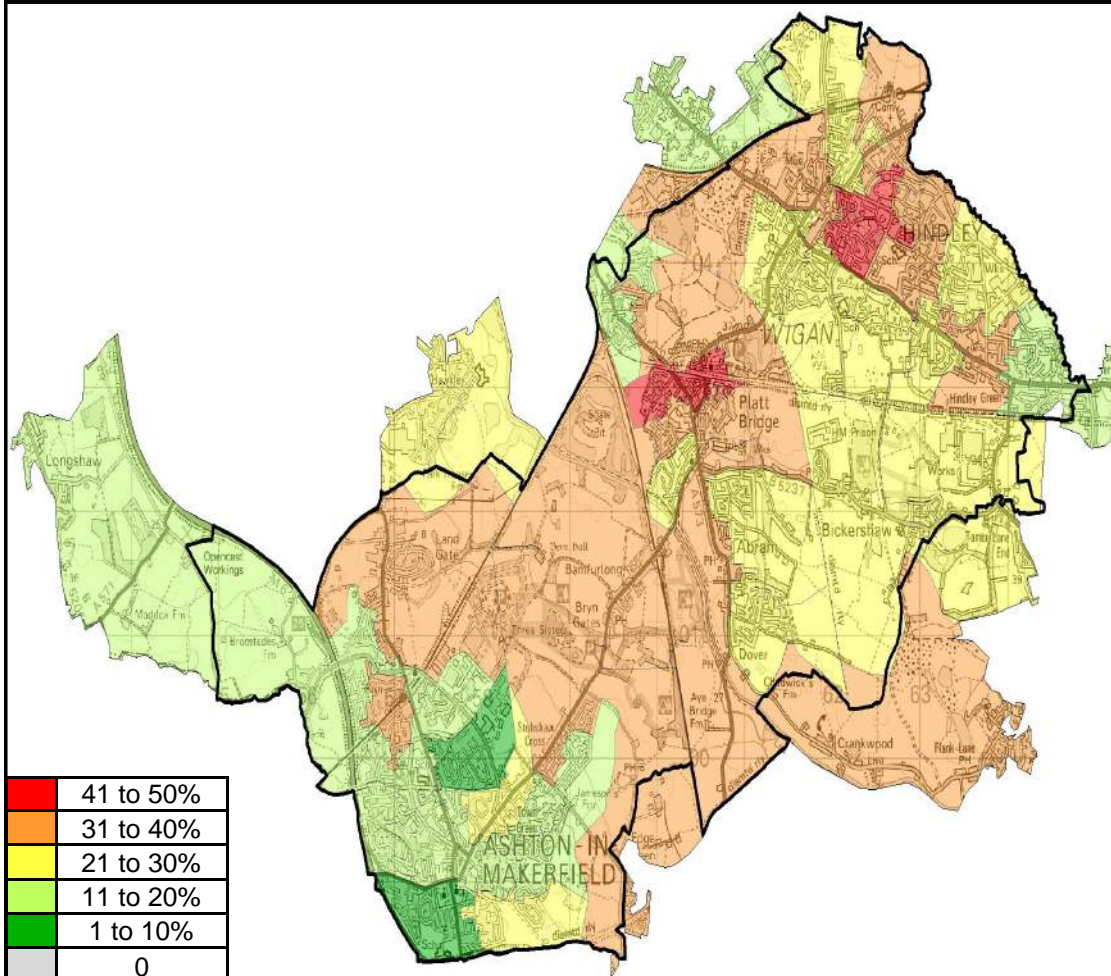
Children with a Level of SEN (Primary)



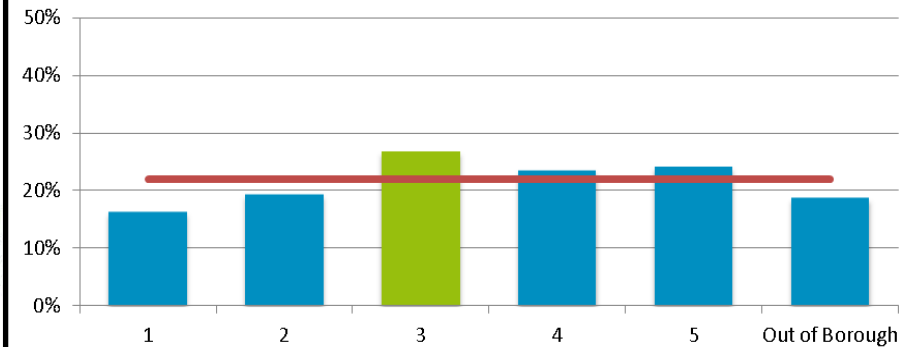
Overview Locality 3 has the third highest overall rate of children with a level of SEN within all of the localities with a rate of 19%. Plank Lane/ Crankwood has the highest concentration of children with a level of SEN in Locality 3. The borough average is 20% per locality.

Locality Rank: 3rd
Highest Concentration:
Plank Lane/ Crankwood

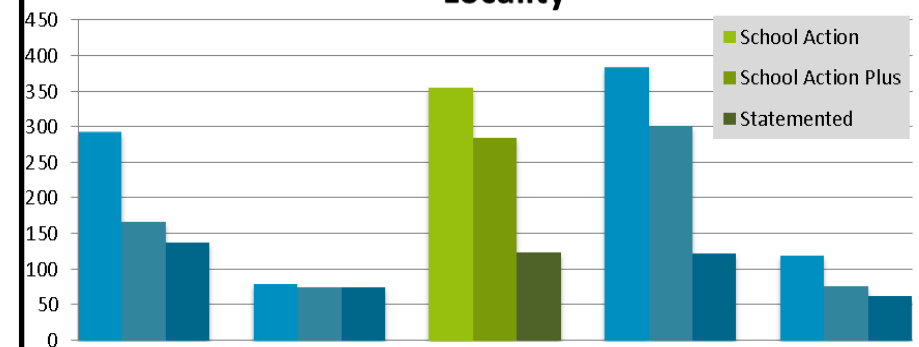
Children with a Level of SEN (Secondary)



Rate of Secondary School Children with a Level of SEN by Locality



Breakdown of SEN levels (Secondary) by Locality



Overview

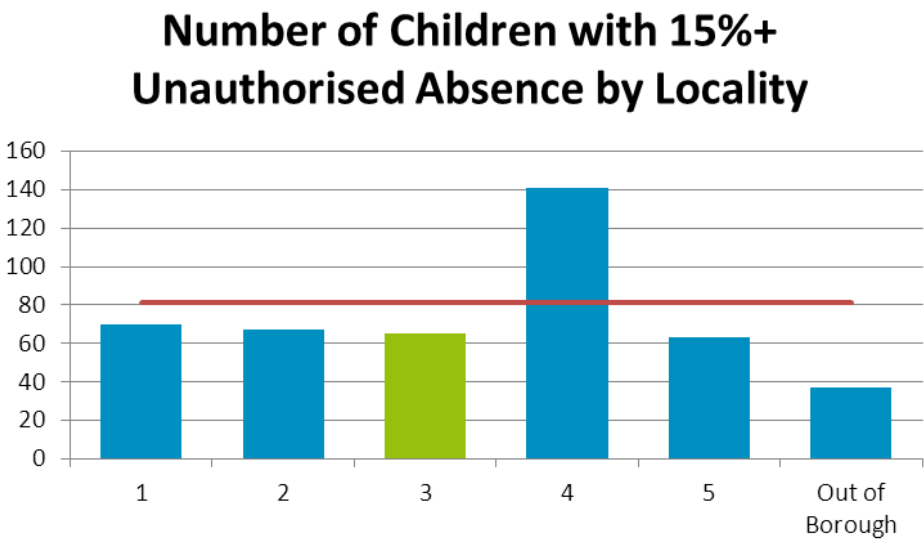
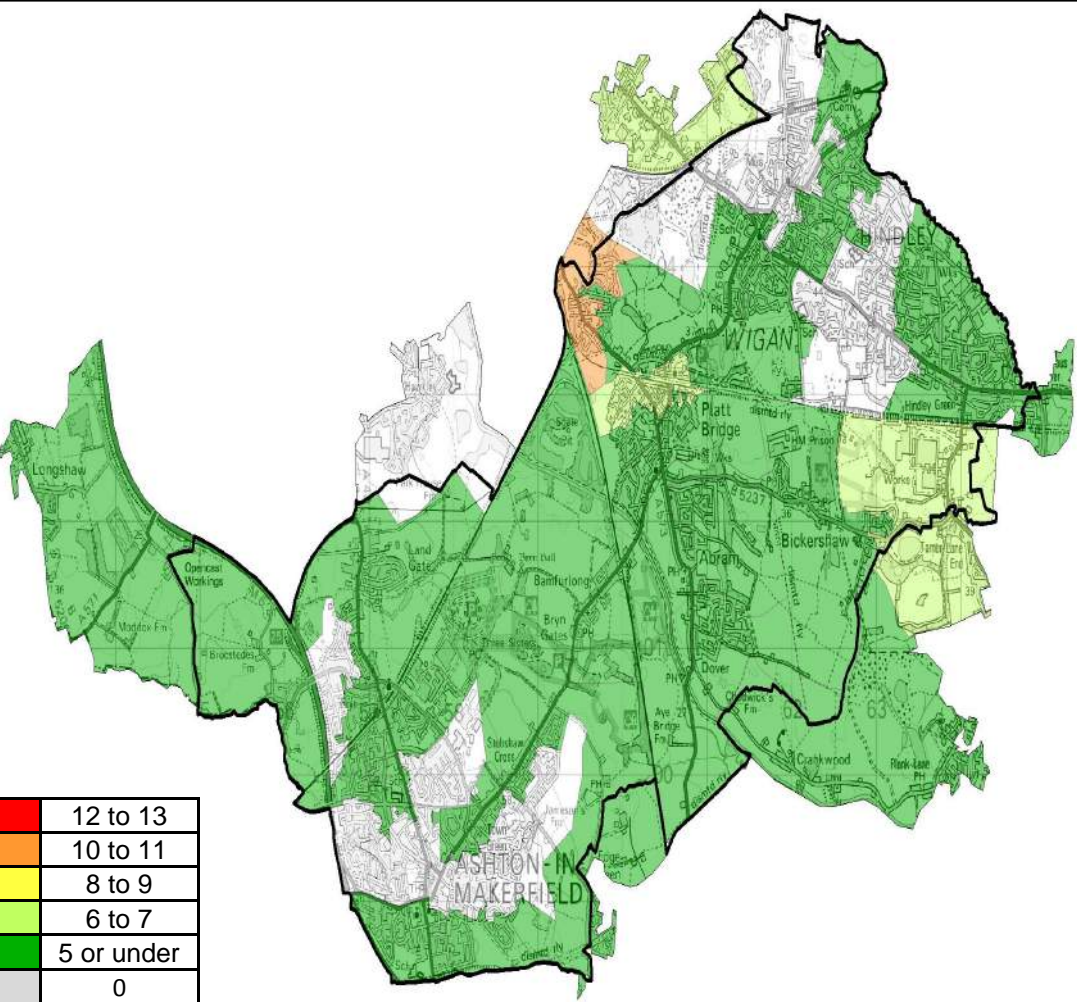
Locality 3 has the highest overall rate of secondary school children with a level of SEN of all localities with a rate of 27%. Chapel Fields Estate North has the highest concentration of children with a level of SEN within the locality with a rate of just over 51%.

The borough average rate is 22% across all localities.

Locality Rank: 1st

Highest Concentration:
Chapel Fields Estate North

Children with 15%+ Unauthorised Absence

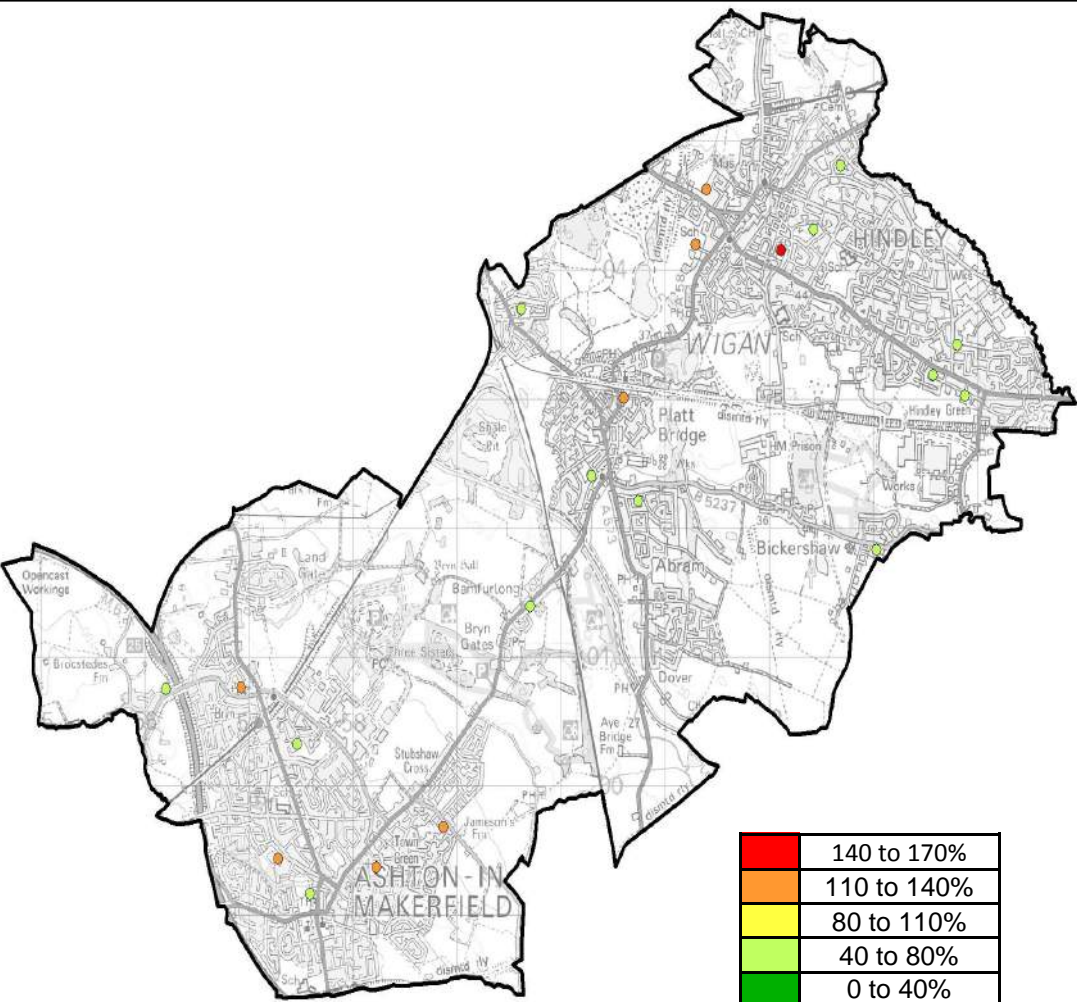


Overview

Locality 3 has the second lowest number of children who have a high rate of unauthorised absence but figures are comparable amongst localities 1, 2, 3 and 5.

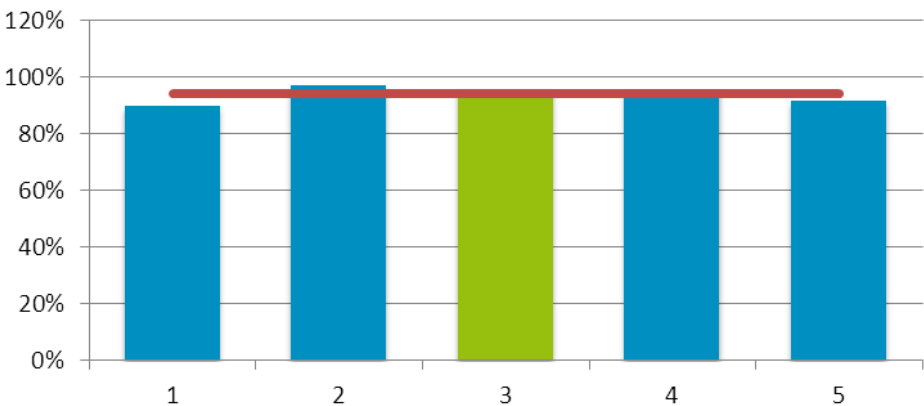
Locality Rank: 4th
Highest Concentration: Spring View

Demand for School Places (Primary)



Locality Rank: 2nd

Number of 1st Preferences by Available Places in Localities



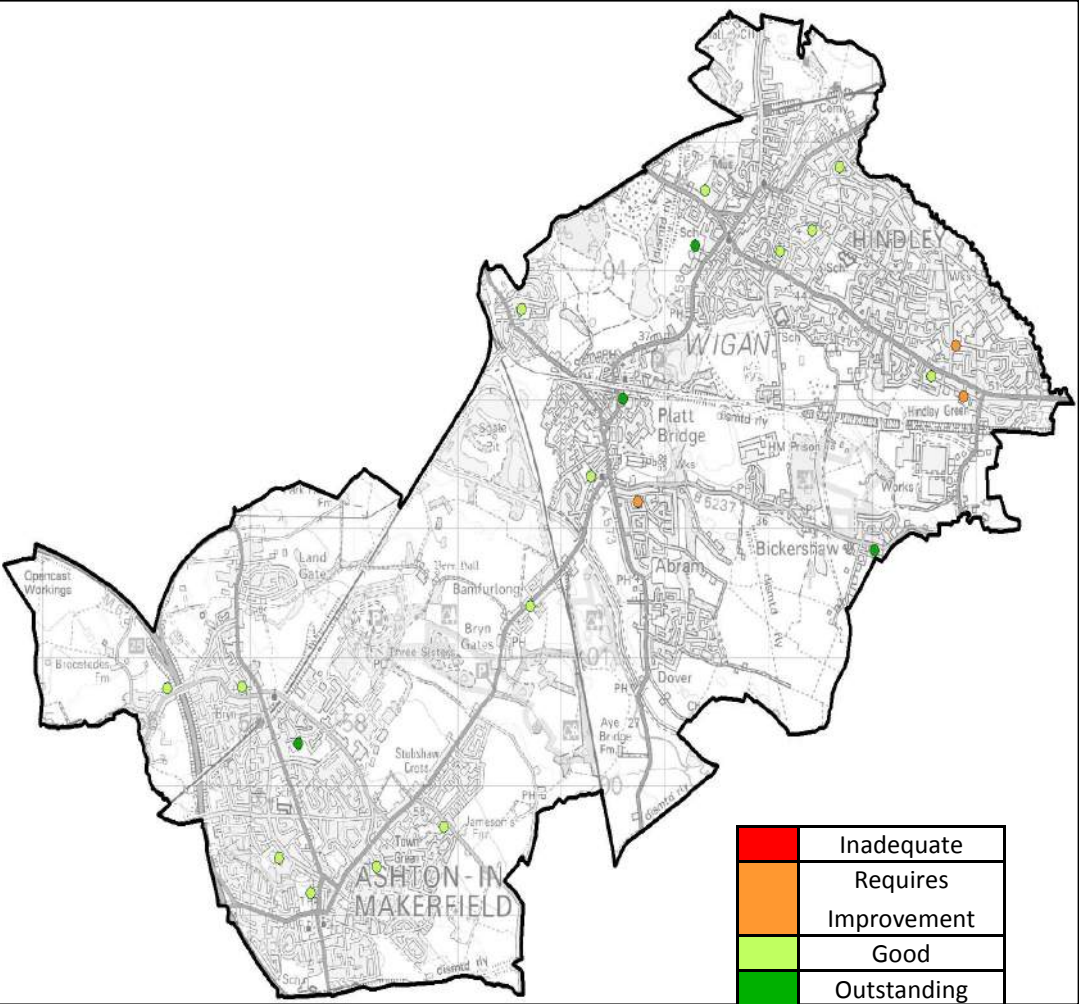
Overview

Locality 3 has the second highest rate of demand for primary school places of all Wigan borough's localities.

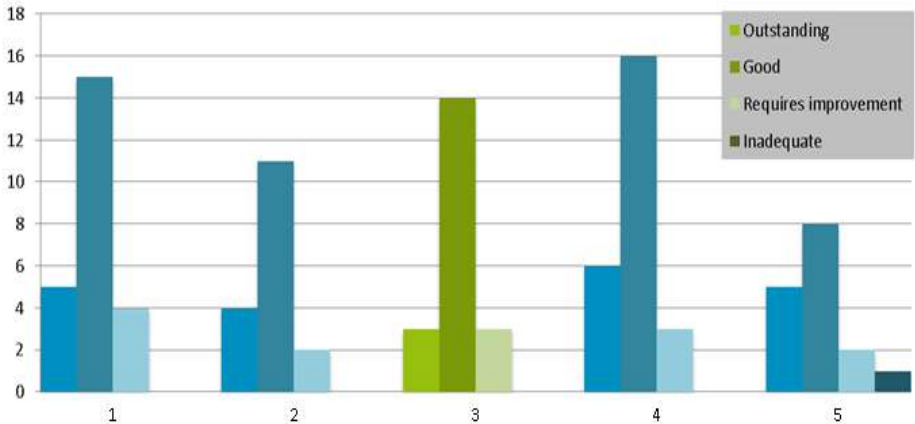
None of Locality 3's primary schools have under 50% first preferences compared to available places. The lowest rate is Nicol Mere with 51%.

Eight schools have over 100% first preferences compared to available places. Hindley Junior and Infant School has the largest percentage with 170%.

School Ofsted Ratings (Primary)



Breakdown of Primary School OFSTED Ratings by Locality

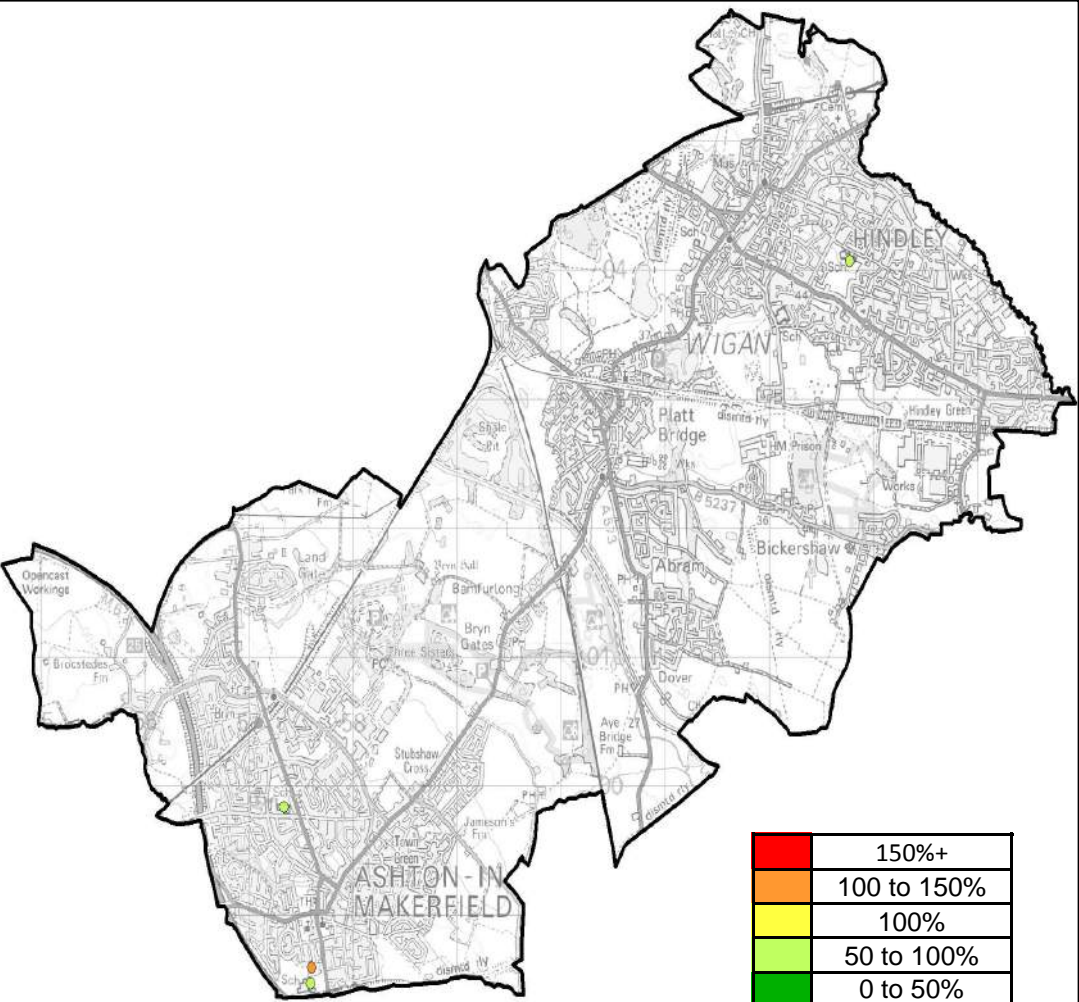


Overview

Locality 3 has 85% of schools rated good or outstanding.

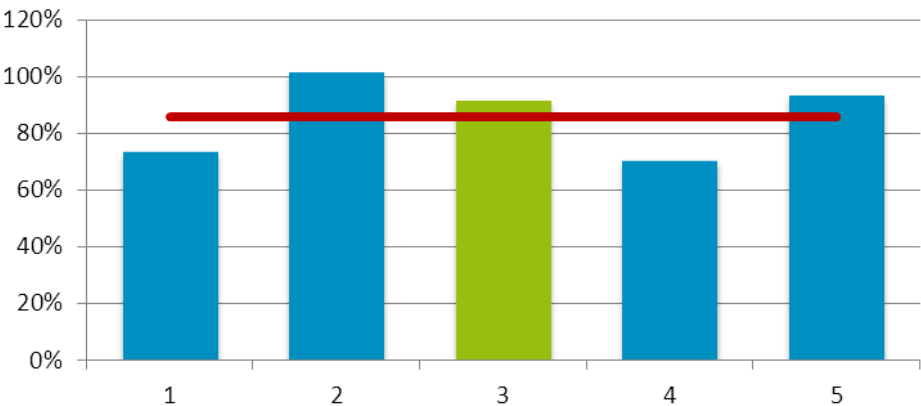
Of the 20 schools in the locality, 3 are rated as outstanding, 14 as good and 3 as requiring improvement.

Demand for School Places (Secondary)



Locality Rank: 3rd

Number of 1st Preferences by Available Places in Localities



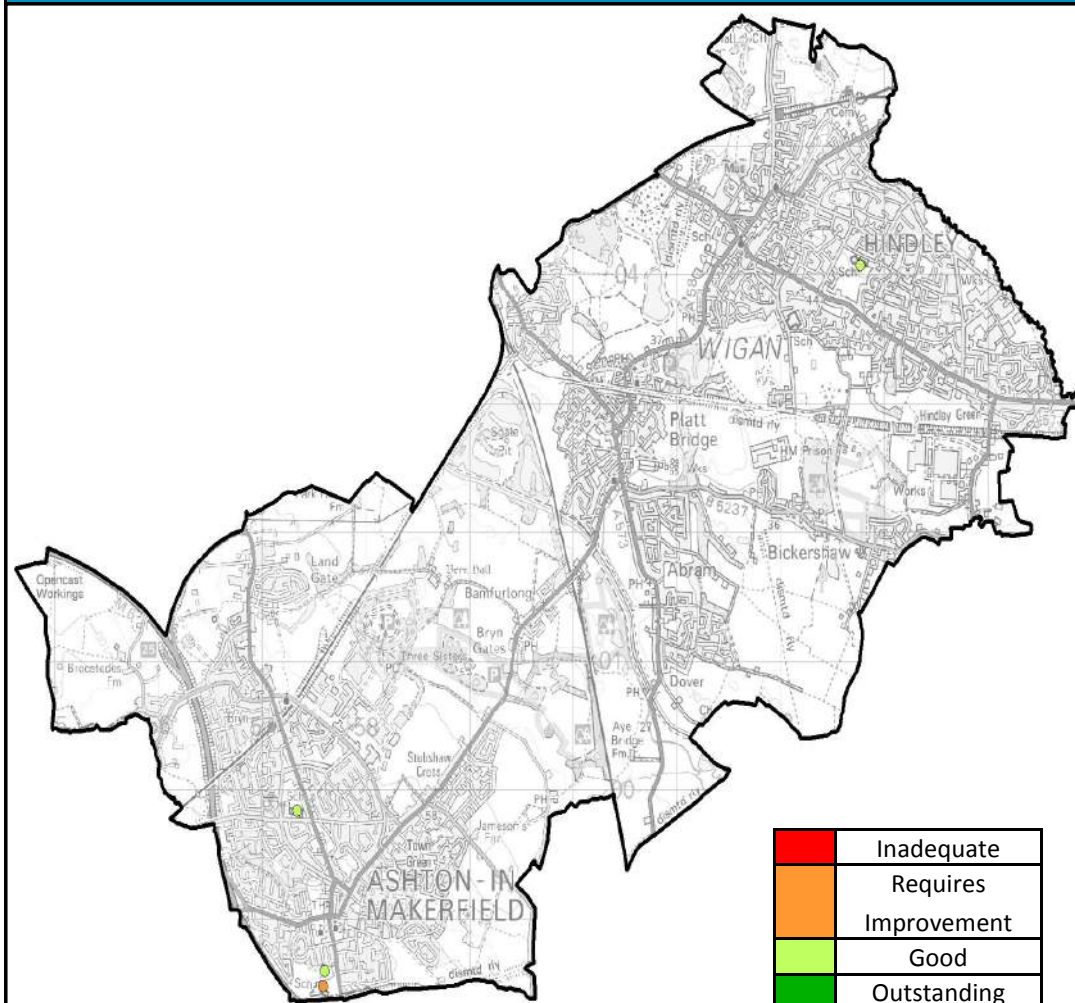
Overview

Locality 3 has the third highest rate of demand for secondary school places of all Wigan borough's localities.

Between Locality 3's four secondary schools, there are 864 admission places available but only 790 children have one of the schools as their first choice, a rate of 91%.

St. Edmund Arrowsmith High School has the highest rate with 111.7% while The Byrchall High School has the lowest with 74.9%.

School Ofsted Ratings (Secondary)



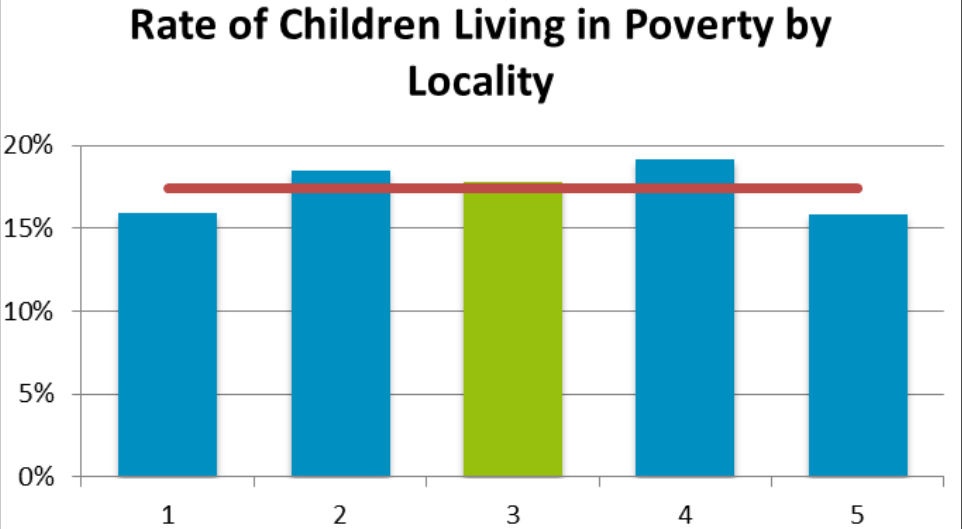
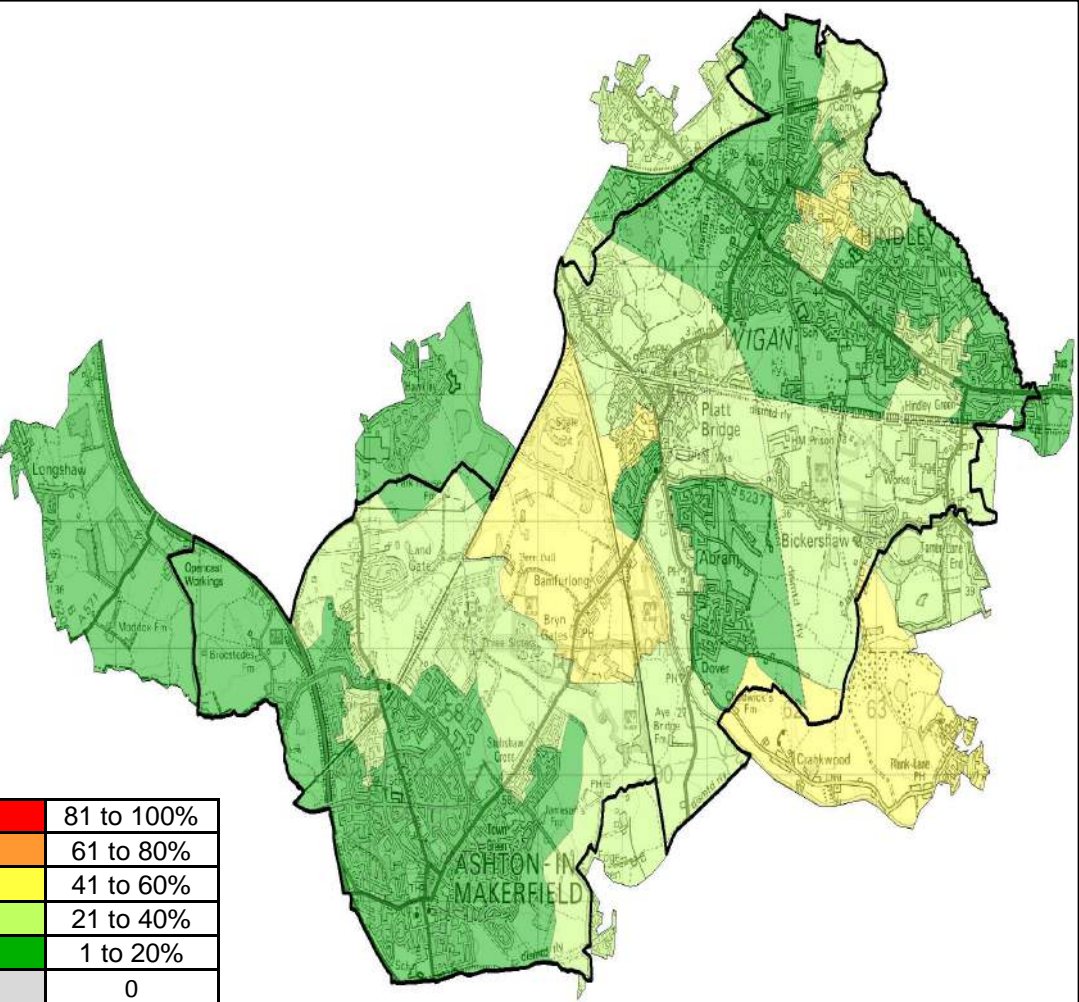
	Outstanding	Good	Requires Improvement	Inadequate	Total
Locality 1		4	1		5
Locality 2	2		1		3
Locality 3		3	1		4
Locality 4		3	1		4
Locality 5	2				2
Grand Total	4	10	4		18

Overview

Locality 3 has 3 schools with OFSTED rating of Good. These are: Cansfield High School, Hindley High School and St Edmund Arrowsmith High School .

The other school in the locality, The Byrchall High School and Sixth Form College has a rating of Requires Improvement.

Children Living in Poverty



Overview

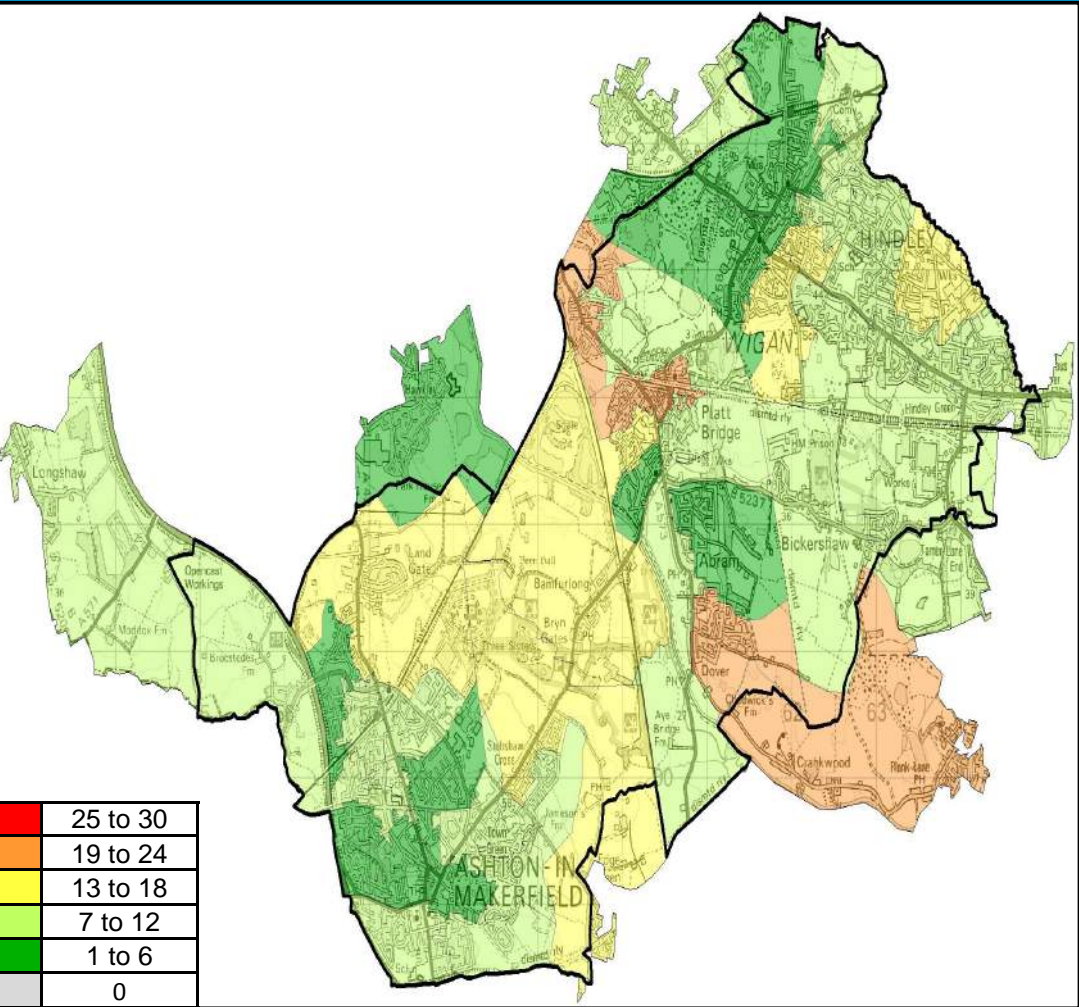
Locality 3 has the third highest rate of children living in poverty of the Borough's localities with 18%. The highest concentration within locality 3 is Plankwood/ Crankwood with just over 43% .

The aver age across all localities is 17%.

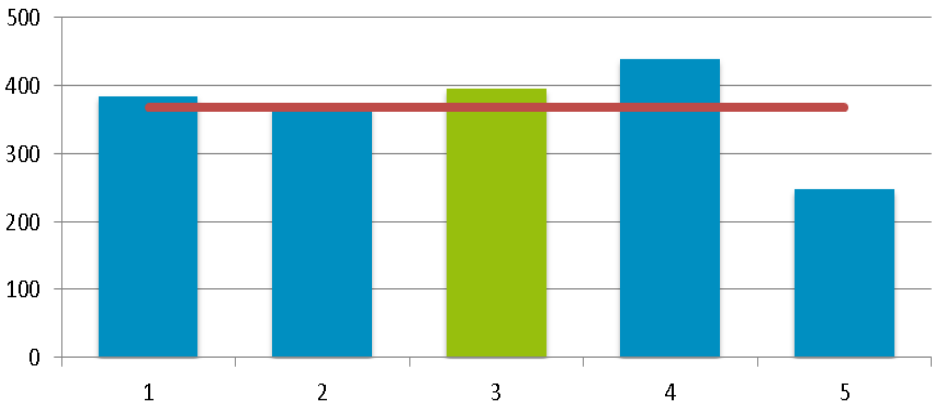
Locality Rank: 3rd

Highest Concentration: Plank Lane / Crankwood

Children 0-16 Claiming DLA



Number of Children Aged 0-16 Claiming DLA by Locality



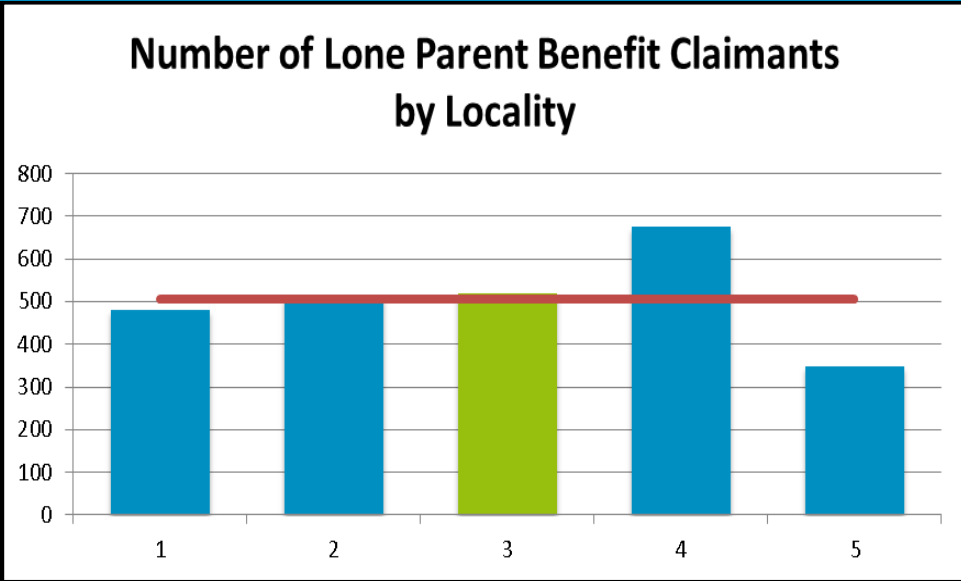
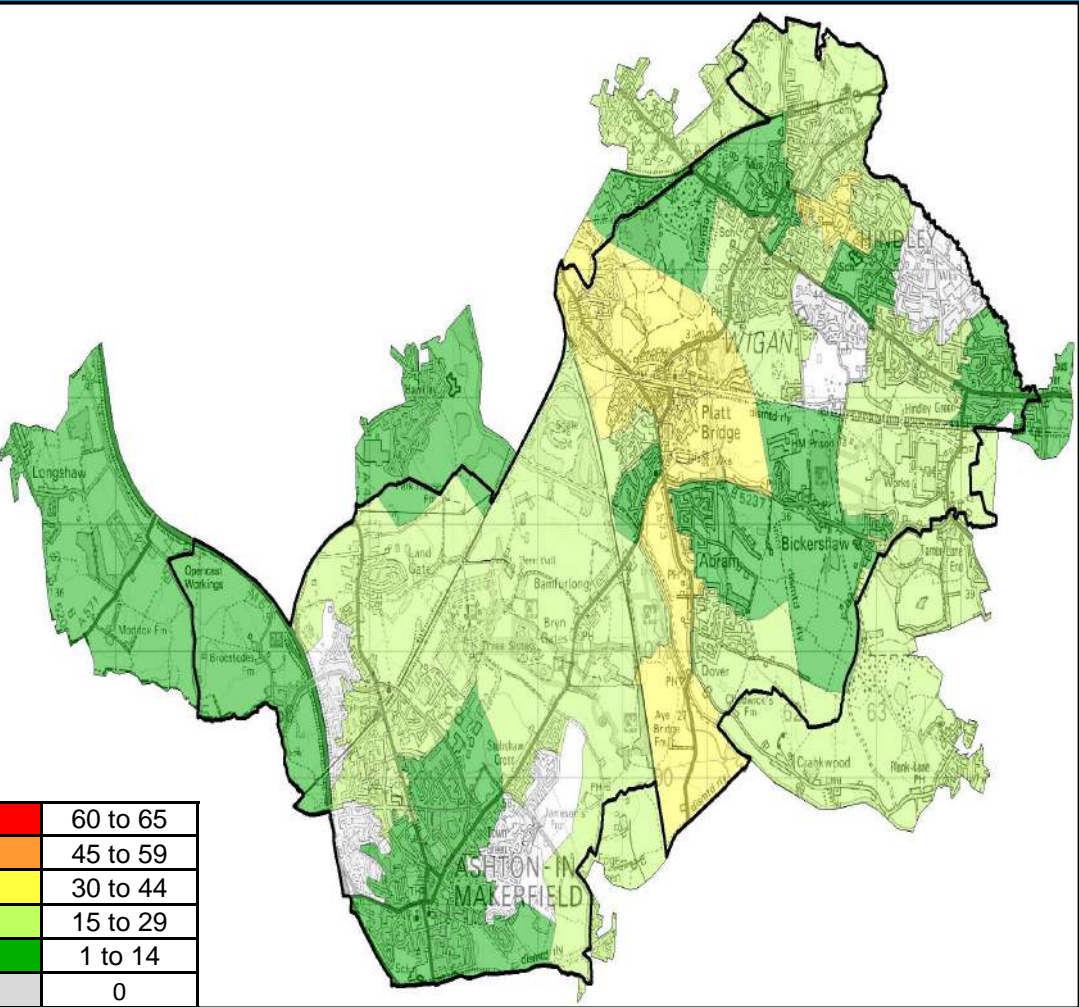
Overview

Locality 3 has the second highest number of Children Aged 0-16 Claiming DLA of all Wigan Council's localities with 396 identified. The highest concentrations of Children Aged 0-16 Claiming DLA are within the locality of Platt Bridge North/ Park Lane Estate.

The average number of Children Aged 0-16 Claiming DLA of all Wigan Council's localities is 368.

Locality Rank: 2nd
Highest Concentration: Platt Bridge North / Park Lane Estate

Lone Parent Benefit



Overview

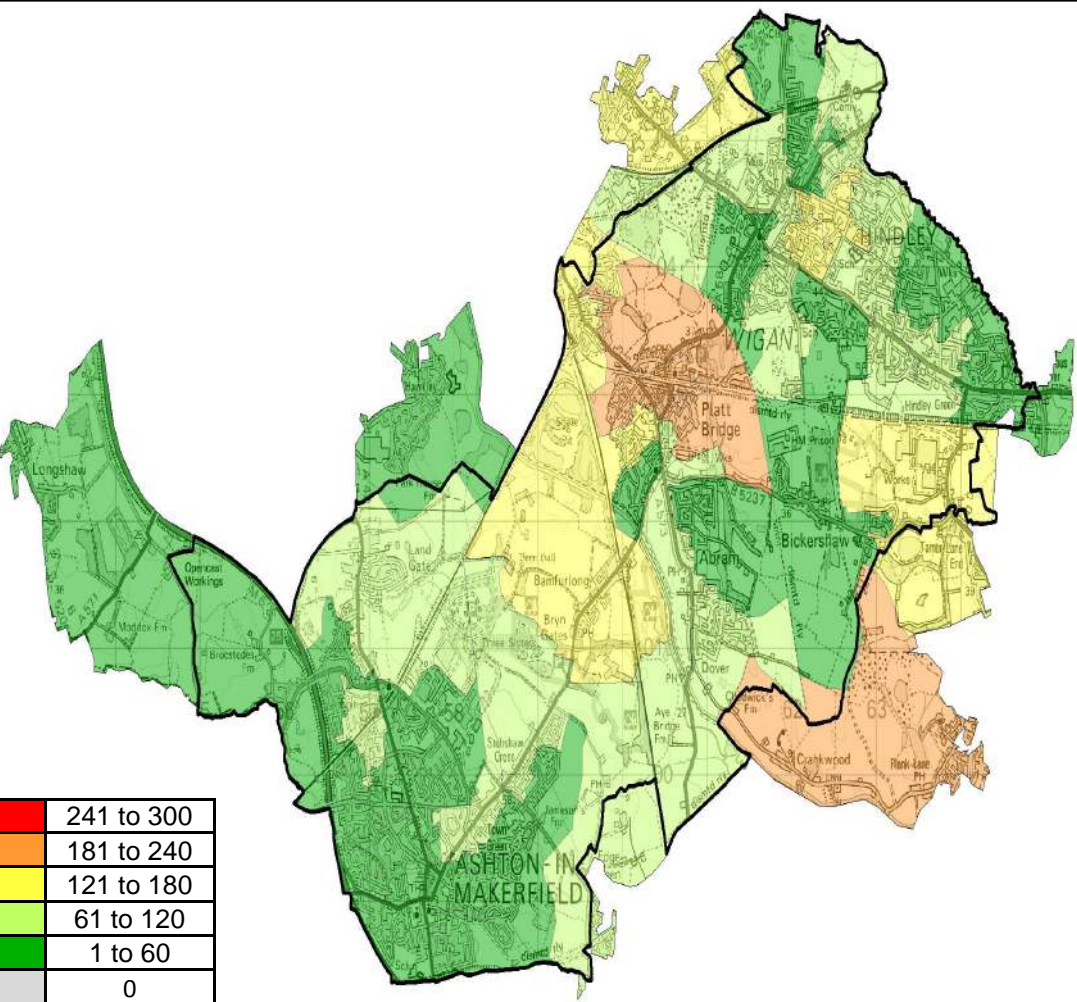
Locality 3 has the second highest of number of lone parent benefit claimants of all Wigan Council's localities with 519 identified. The highest concentration of lone parent benefit claimants within locality 1 is 45 claimants for Woodcock Drive Estate.

The average number of lone parent benefit claimants for all of Wigan Council's localities is 506 claimants.

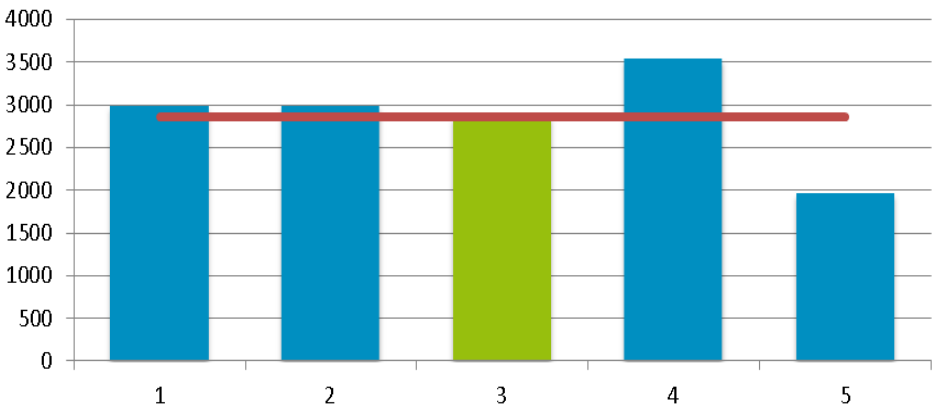
Locality Rank: 2nd

Highest Concentration: Woodcock Drive Estate

Children Living in Out of Work Benefit Households



Number of Children Living in Out of Work Benefit Households by Locality



Overview

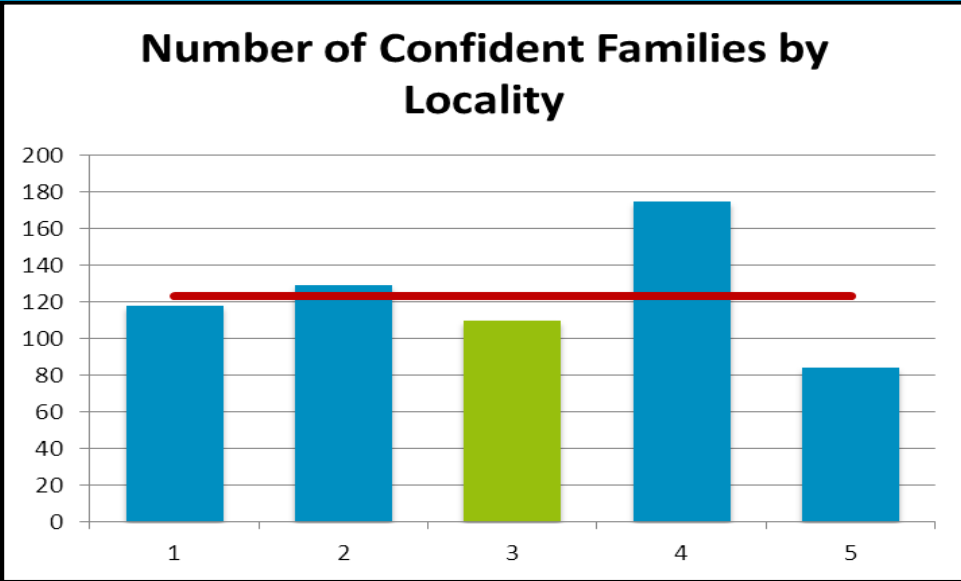
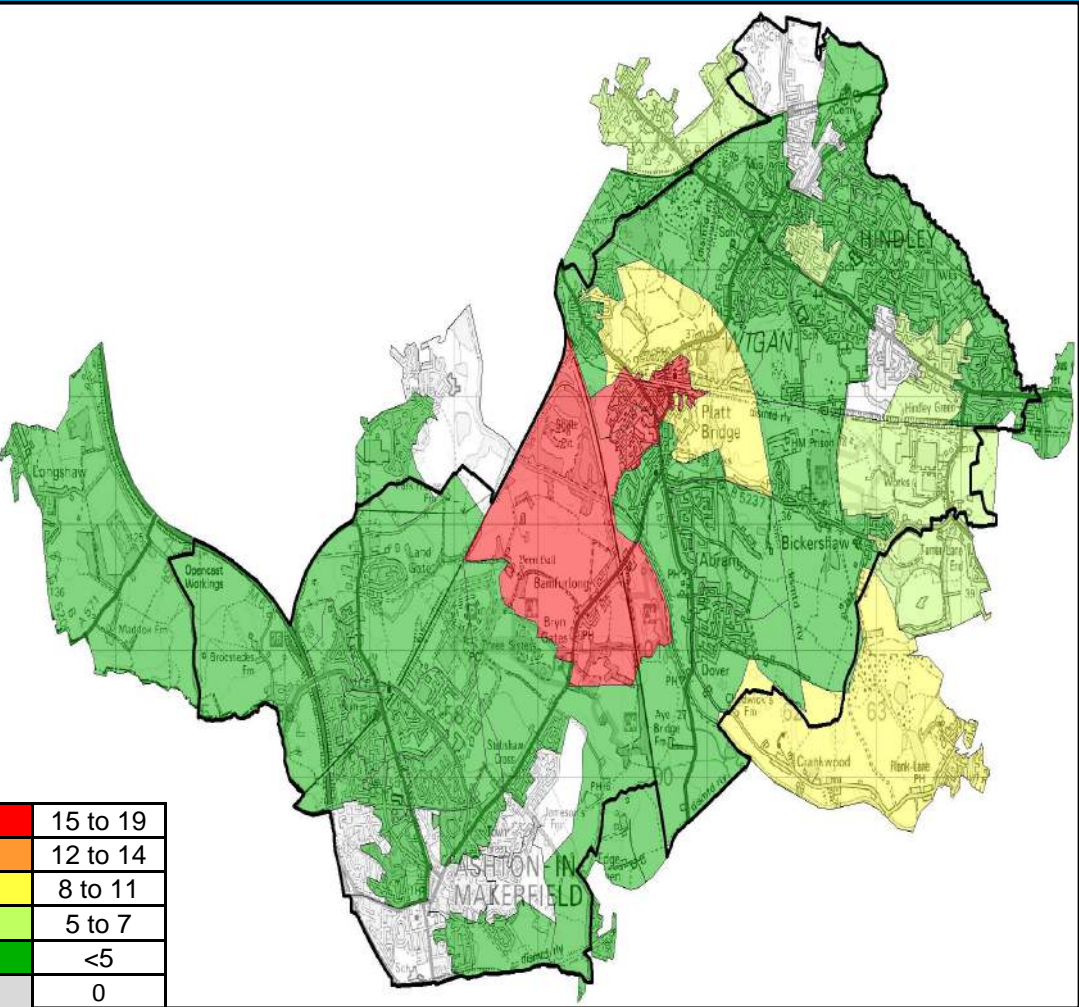
Locality 3 has second lowest number of children living in out of work benefit households by locality of all Wigan Council’s localities with 2868 identified. The highest concentration of children living in out of work benefit households is in Platt Bridge North.

The average number of children living in out of work benefit households across all Wigan Council’s localities is 2864 children.

Locality Rank: 4th

Highest Concentration: Platt Bridge North

Confident Families



Overview

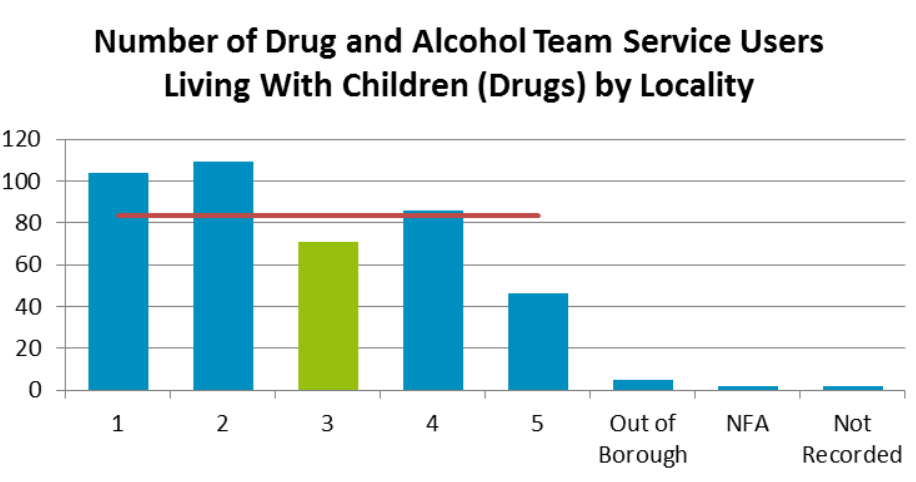
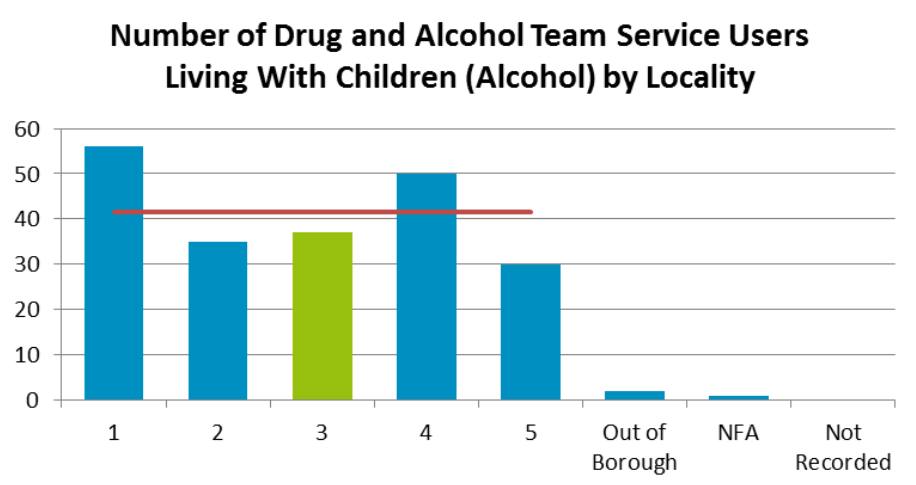
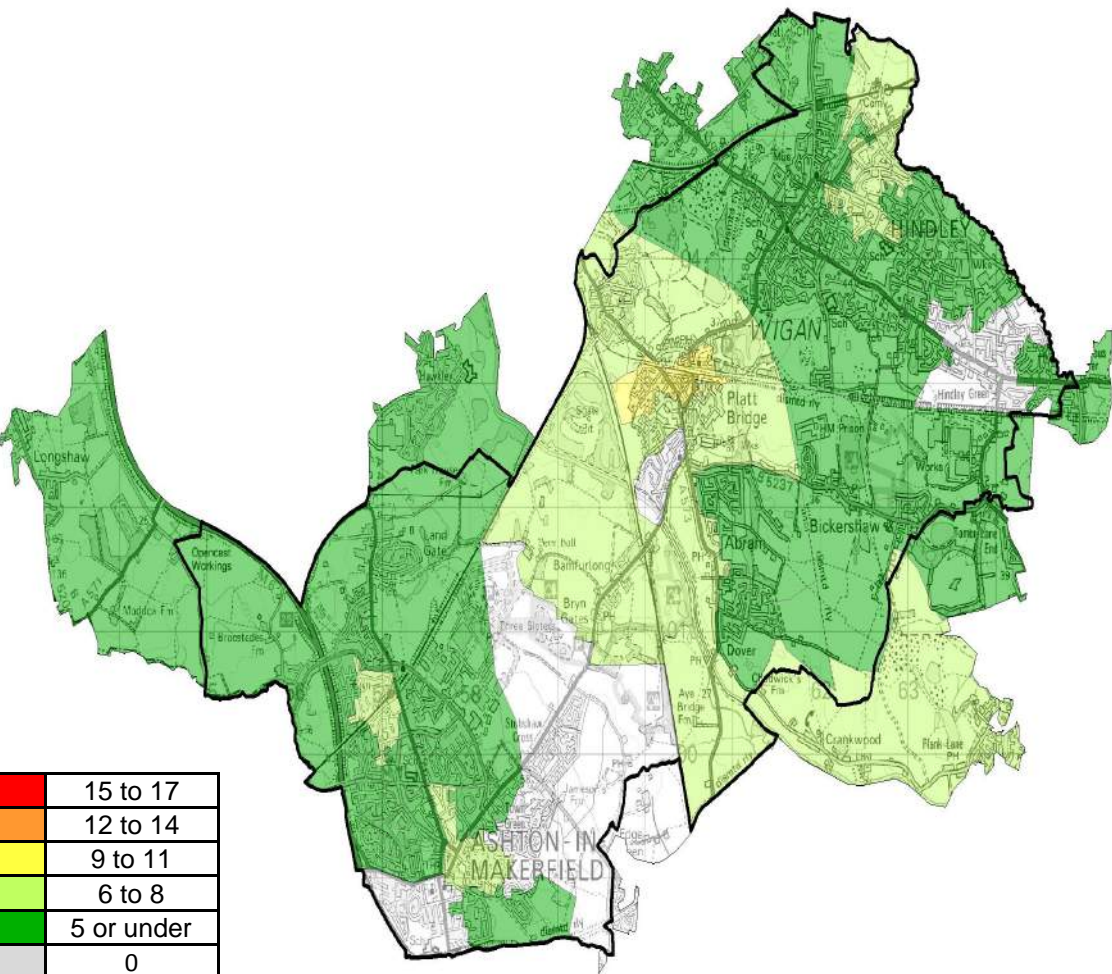
Locality 3 has the second lowest number of identified confident families of all Wigan Council's localities with 110 identified.

However, there are areas which have a large number of identified confident families. Platt Bridge North and Platt Bridge North East have 15 confident families each.

Locality Rank: 4th

Highest Concentration: Platt Bridge North & Northeast

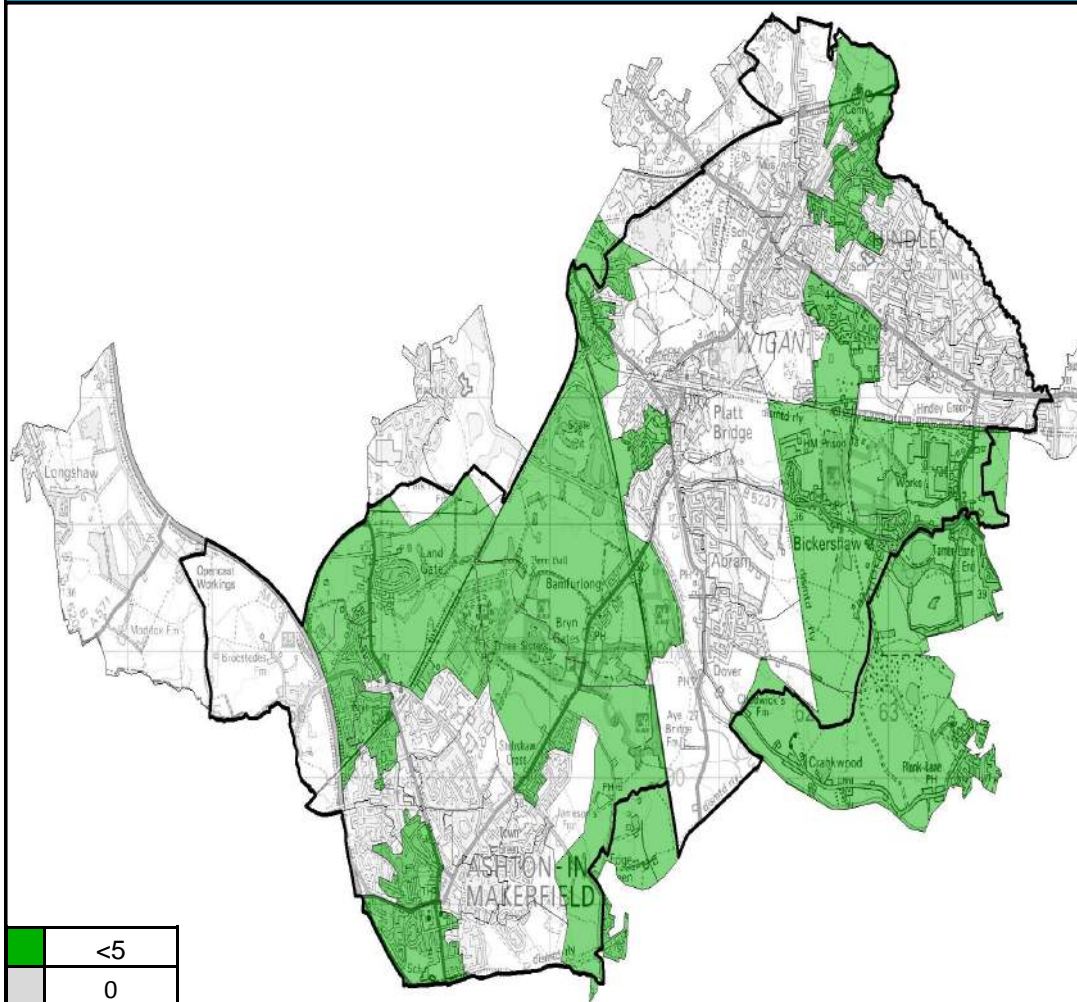
Drug and Alcohol Service Users



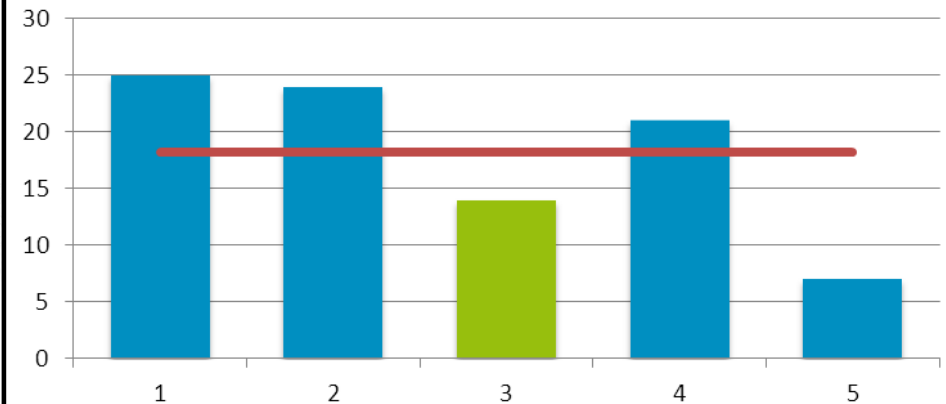
Overview Locality 3 has the second overall lowest number of drug and alcohol service team users who live with children of all Wigan Borough’s 5 localities. Platt Bridge North has the highest number of Drug and Alcohol Team Service users that live with children in locality 1.

Locality Rank: 4th
Highest Concentration:
Platt Bridge North

Entrants to the Youth Justice System



Entrants to Youth Justice System by Locality



Overview

Locality 3 had the second lowest number of entrants to the youth justice system with 14 entrants in 2013.

The borough average is 18 per locality.

Locality Rank: 4th

Highest Concentration: Platt Bridge Northeast / Bickershaw

Matrix

		Youth Justice System	DAAT Users	Confident Families	Out of work benefits	Lone Parent Benefit	Children claiming DLA	Child poverty	BME	Unauthorised absence	SEN (Secondary)	SEN (Primary)	NEET	Free school meals	Attainment level at KS4	Attainment level at KS2	GLD at EYFSP	Out patients appointments	Non elective admissions for under 5's	Non elective admissions for intentional/unintentional	Children with long term condition	Child obesity (Year 6)	Child obesity (Reception)	Alcohol specific hospital stay	A & E attendance	Looked after children	Gateway referrals	CPP	Children Social Care	CAF assessments
LSOA Code	LSOA Name																													
E01006212	Simpkin Street Estate																													
E01006213	Woodcock Drive Estate																													
E01006214	Warrington Road / Lee Lane Estate																													
E01006215	Platt Bridge North East																													
E01006216	Park Lane Estate																													
E01006217	Spring View																													
E01006218	Platt Bridge North																													
E01006219	Whelmar Estate																													
E01006220	Stubshaw Cross																													
E01006221	Bolton Road (ashton)																													
E01006222	Stubshaw Cross / Town Green																													
E01006223	Ashton Centre																													
E01006224	Town Green																													
E01006225	Liverpool Road (Ashton)																													
E01006226	Ashton Heath																													

Matrix

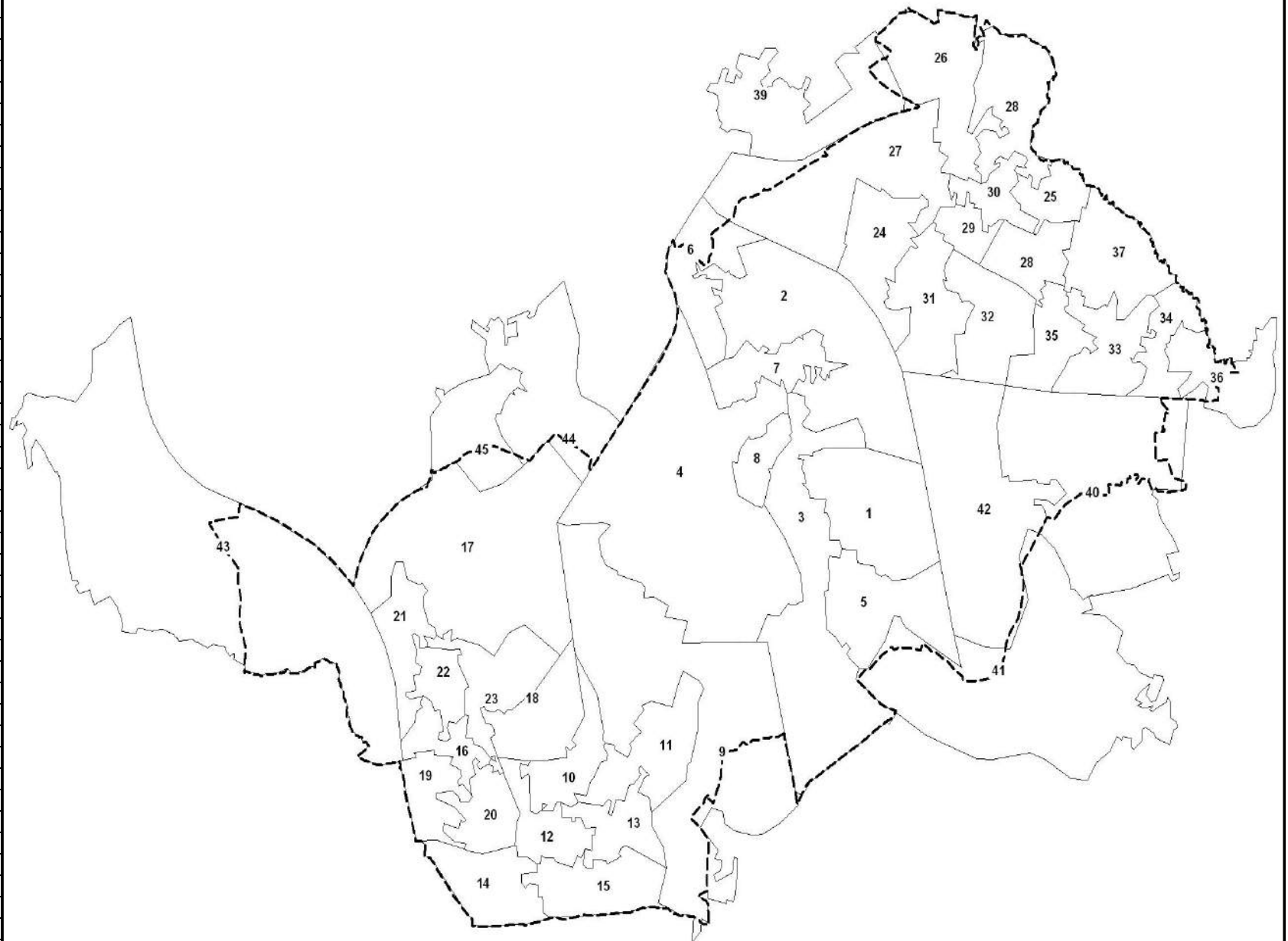
		Youth Justice System																																																																																																																																																																																																																																																																																																																																																																																																																																																																																																																																																																																																																																																																																																																																																																																																																																																																																																																																																																																																																																																																																																																																																																																																																																																																																																																																																																																																																																																																																																																																								
--	--	----------------------	--	--	--	--	--	--	--	--	--	--	--	--	--	--	--	--	--	--	--	--	--	--	--	--	--	--	--	--	--	--	--	--	--	--	--	--	--	--	--	--	--	--	--	--	--	--	--	--	--	--	--	--	--	--	--	--	--	--	--	--	--	--	--	--	--	--	--	--	--	--	--	--	--	--	--	--	--	--	--	--	--	--	--	--	--	--	--	--	--	--	--	--	--	--	--	--	--	--	--	--	--	--	--	--	--	--	--	--	--	--	--	--	--	--	--	--	--	--	--	--	--	--	--	--	--	--	--	--	--	--	--	--	--	--	--	--	--	--	--	--	--	--	--	--	--	--	--	--	--	--	--	--	--	--	--	--	--	--	--	--	--	--	--	--	--	--	--	--	--	--	--	--	--	--	--	--	--	--	--	--	--	--	--	--	--	--	--	--	--	--	--	--	--	--	--	--	--	--	--	--	--	--	--	--	--	--	--	--	--	--	--	--	--	--	--	--	--	--	--	--	--	--	--	--	--	--	--	--	--	--	--	--	--	--	--	--	--	--	--	--	--	--	--	--	--	--	--	--	--	--	--	--	--	--	--	--	--	--	--	--	--	--	--	--	--	--	--	--	--	--	--	--	--	--	--	--	--	--	--	--	--	--	--	--	--	--	--	--	--	--	--	--	--	--	--	--	--	--	--	--	--	--	--	--	--	--	--	--	--	--	--	--	--	--	--	--	--	--	--	--	--	--	--	--	--	--	--	--	--	--	--	--	--	--	--	--	--	--	--	--	--	--	--	--	--	--	--	--	--	--	--	--	--	--	--	--	--	--	--	--	--	--	--	--	--	--	--	--	--	--	--	--	--	--	--	--	--	--	--	--	--	--	--	--	--	--	--	--	--	--	--	--	--	--	--	--	--	--	--	--	--	--	--	--	--	--	--	--	--	--	--	--	--	--	--	--	--	--	--	--	--	--	--	--	--	--	--	--	--	--	--	--	--	--	--	--	--	--	--	--	--	--	--	--	--	--	--	--	--	--	--	--	--	--	--	--	--	--	--	--	--	--	--	--	--	--	--	--	--	--	--	--	--	--	--	--	--	--	--	--	--	--	--	--	--	--	--	--	--	--	--	--	--	--	--	--	--	--	--	--	--	--	--	--	--	--	--	--	--	--	--	--	--	--	--	--	--	--	--	--	--	--	--	--	--	--	--	--	--	--	--	--	--	--	--	--	--	--	--	--	--	--	--	--	--	--	--	--	--	--	--	--	--	--	--	--	--	--	--	--	--	--	--	--	--	--	--	--	--	--	--	--	--	--	--	--	--	--	--	--	--	--	--	--	--	--	--	--	--	--	--	--	--	--	--	--	--	--	--	--	--	--	--	--	--	--	--	--	--	--	--	--	--	--	--	--	--	--	--	--	--	--	--	--	--	--	--	--	--	--	--	--	--	--	--	--	--	--	--	--	--	--	--	--	--	--	--	--	--	--	--	--	--	--	--	--	--	--	--	--	--	--	--	--	--	--	--	--	--	--	--	--	--	--	--	--	--	--	--	--	--	--	--	--	--	--	--	--	--	--	--	--	--	--	--	--	--	--	--	--	--	--	--	--	--	--	--	--	--	--	--	--	--	--	--	--	--	--	--	--	--	--	--	--	--	--	--	--	--	--	--	--	--	--	--	--	--	--	--	--	--	--	--	--	--	--	--	--	--	--	--	--	--	--	--	--	--	--	--	--	--	--	--	--	--	--	--	--	--	--	--	--	--	--	--	--	--	--	--	--	--	--	--	--	--	--	--	--	--	--	--	--	--	--	--	--	--	--	--	--	--	--	--	--	--	--	--	--	--	--	--	--	--	--	--	--	--	--	--	--	--	--	--	--	--	--	--	--	--	--	--	--	--	--	--	--	--	--	--	--	--	--	--	--	--	--	--	--	--	--	--	--	--	--	--	--	--	--	--	--	--	--	--	--	--	--	--	--	--	--	--	--	--	--	--	--	--	--	--	--	--	--	--	--	--	--	--	--	--	--	--	--	--	--	--	--	--	--	--	--	--	--	--	--	--	--	--	--	--	--	--	--	--	--	--	--	--	--	--	--	--	--	--	--	--	--	--	--	--	--	--	--	--	--	--	--	--	--	--	--	--	--	--	--	--	--	--	--	--	--	--	--	--	--	--	--	--	--	--	--	--	--	--	--	--	--	--	--	--	--	--	--	--	--	--	--	--	--	--	--	--	--	--	--	--	--	--	--	--	--	--	--	--	--	--	--	--	--	--	--	--	--	--	--	--	--	--	--	--	--	--	--	--	--	--	--	--	--	--	--	--	--	--	--	--	--	--	--	--	--	--	--	--	--	--	--	--	--	--	--	--	--	--	--	--	--	--	--	--	--	--	--	--	--	--	--	--	--	--	--	--	--	--	--	--	--	--	--	--	--	--	--	--	--	--	--	--	--	--	--	--	--	--	--	--	--	--	--	--	--	--	--	--	--	--	--	--	--	--	--	--	--	--	--	--	--	--	--	--	--	--	--	--	--	--	--	--	--	--	--	--	--	--	--	--	--	--	--	--	--	--	--	--	--	--	--	--	--	--	--	--	--	--	--	--	--	--	--	--	--	--	--	--	--	--	--	--	--	--	--	--	--	--	--	--	--	--	--	--	--	--	--	--	--	--	--	--	--	--	--	--	--	--	--	--	--	--	--	--	--	--	--	--	--	--	--	--	--	--	--	--	--	--	--	--	--	--	--	--	--	--	--	--	--	--	--	--	--	--	--	--	--	--	--	--	--	--	--	--	--	--	--	--	--	--	--	--	--	--	--	--	--	--	--	--	--	--	--	--	--	--	--	--	--	--	--	--	--	--	--	--	--	--	--	--	--	--	--	--	--	--	--	--	--	--	--	--	--	--	--	--	--	--	--	--	--	--	--	--	--	--	--	--	--	--	--	--	--	--	--	--	--	--	--	--	--	--	--	--	--	--	--	--	--	--	--	--	--	--	--	--	--	--	--	--	--	--	--	--	--	--	--	--	--	--	--	--	--	--	--	--	--	--	--	--	--	--	--	--	--	--	--	--	--	--	--	--	--	--	--	--	--	--	--	--	--	--	--	--	--	--	--	--	--	--	--	--	--	--	--	--	--	--	--	--	--	--	--	--	--	--	--	--	--	--	--	--	--	--	--	--	--	--	--	--	--	--	--	--	--	--	--	--	--	--	--	--	--	--	--	--	--	--	--	--	--	--	--	--	--	--	--	--	--	--	--	--	--	--	--	--	--	--	--	--	--	--	--	--	--	--	--	--	--	--	--	--	--	--	--	--	--	--	--	--	--	--	--	--	--	--	--	--	--	--	--	--	--	--	--

Matrix

LSOA Code	LSOA Name	CAF assessments	Children Social Care	CPP	Gateway referrals	Looked after children	A & E attendance	Alcohol specific hospital stay	Child obesity (Reception)	Child obesity (Year 6)	Children with long term condition	Non elective admissions for intentional/unintentional	Non elective admissions for under 5's	Out patients appointments	GLD at EYFSP	Attainment level at KS2	Attainment level at KS4	Free school meals	NEET	SEN (Primary)	SEN (Secondary)	Unauthorised absence	BME	Child poverty	Children claiming DLA	Lone Parent Benefit	Out of work benefits	Confident Families	DAAT Users	Youth Justice System
E01006276	Park Road Estate																													
E01006277	Smiths Farm Estate																													
E01006278	Atherton Road																													
E01006279	Hindley Green / Leigh Road																													
E01006280	Oak Avenue																													
E01006281	Dangerous Corner																													
E01006285	Long Lane																													
E01006286	Conway Road Estate																													
E01006308	Higher Ince / Manchester Road																													
E01006322	Tamer West																													
E01006327	Plank Lane / Crankwood																													
E01006329	Bickershaw																													
E01006368	Longshaw / North Ashton																													
E01006407	Hawkley																													
E01006410	Ben Johnson																													

Reference Map

	LSOA Name
1	Simpkin Street Estate
2	Woodcock Drive Estate
3	Warrington Road / Lee Lane Est
4	Platt Bridge North East
5	Park Lane Estate
6	Spring View
7	Platt Bridge North
8	Whelmar Estate
9	Stubshaw Cross
10	Bolton Road (ashton)
11	Stubshaw Cross / Town Green
12	Ashton Centre
13	Town Green
14	Liverpool Road (Ashton)
15	Ashton Heath
16	Central Ashton
17	Landgate
18	Eskdale
19	Woodedge Estate
20	Millingford
21	Downall Green
22	Wentworth
23	Nicol Mere
24	Liverpool Road (Hindley)
25	Smithwood
26	Hall Lane
27	Hindley Centre
28	Castle Hill
29	Chapel Fields Estate South
30	Chapel Fields Estate North
31	Park Road Estate
32	Smiths Farm Estate
33	Atherton Road
34	Hindley Green / Leigh Road
35	Oak Avenue
36	Dangerous Corner
37	Long Lane
38	Conway Road Estate
39	Higher Ince / Manchester Road
40	Tamer West
41	Plank Lane / Crankwood
42	Bickershaw
43	Longshaw / North Ashton
44	Hawkley
45	Ben Johnson



Notes on Datasets

<u>Dataset</u>	<u>Timeframe</u>
Population	Mid-Year Estimates 2012
BME	2011
CAF Assessments	2013
Referrals to Children's Social Care	2013
Child Protection Plans	2013/14
Gateway Referrals	2013
Looked After Children	2013/14
A&E Attendances for Under 5s	2013/14
Alcohol Specific Hospital Stays for Under 18s	2013/14
Child Obesity	2011/12
Non-Elective Admissions of Children with a Long-Term Condition	2013/14
Non-Elective Admissions for Under 5s	2013/14
Non-Elective Activity for Intentional and Unintentional Injuries	2013/14
Outpatient Appointments for Under 5s	2013/14
EYFS, KS2 & KS4 Attainment Data	2012/13
Eligibility for Free School Meals	As at January 2014
NEET	As at December 2013
Children with a level of SEN	As at January 2014
Children with 15%+ Unauthorised absence	2012/13
Demand for School Places	2012/13
School Ofsted Ratings	As at May 2014
Children Living in Poverty	2011
Children Claiming DLA	As at August 2013
Lone Parent Benefit	As at August 2013
Children Living in Out of Work Benefit Households	As at August 2013
Confident Families	As at January 2014
Drug and Alcohol Service Users	As at September 2013
Entrants to the Youth Justice System	2013