

Locality Profiles

Locality 2– Orrell, Winstanley and Wigan South

Children and Young People's Services

Joint Intelligence Unit

April 2014

Contents

	<u>Page</u>
Overview	3
Population	4
Social Care	7
Hospital Activity	12
Education	20
Benefits	32
Confident Families, DAAT & Crime	36
Matrix	39
Reference Map	42
Notes on Datasets	43

Overview

Situated in the West of the Borough, Locality 2 has a general population of 62,630 of which 14,205 (23%) are 18 or younger.

Poolstock has the highest number of Accident and Emergency attendances for under 5s, highest number of non elective admissions with a long term health condition and highest number of non elective admissions for under 5s. In addition Poolstock has the highest number of outpatient appointments for under 5s.

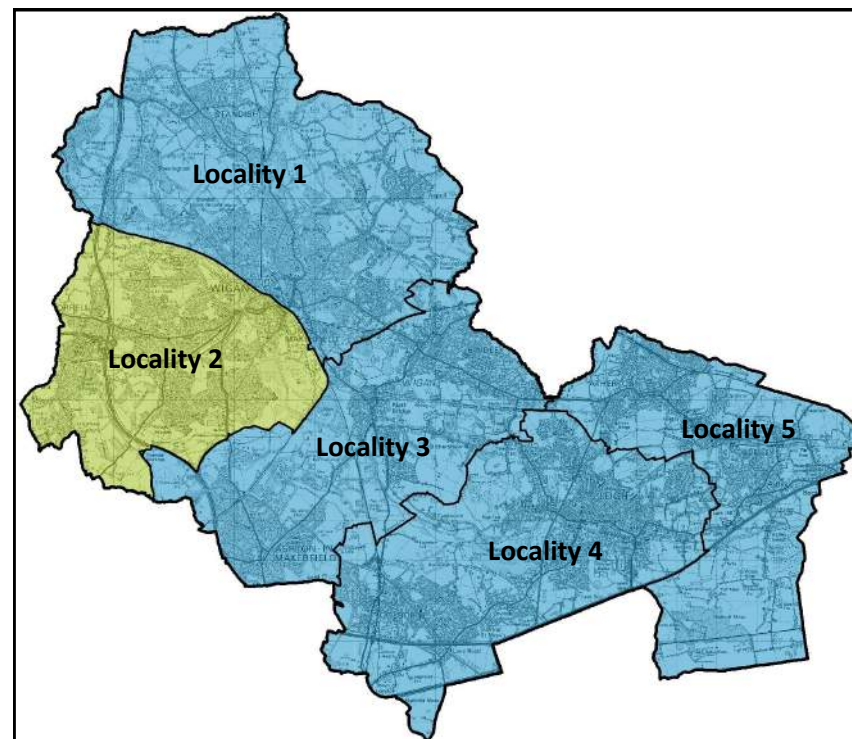
Worsley Hall North has the highest number of CAF assessments opened, the highest number of NEET, the highest rate of children with 15% unauthorised absence and the most lone parent benefit claimants in locality 2.

Norley East has the highest number of gateway referrals, the lowest rate of children showing good levels of development at EYFSP, most free school meals, highest rates of key stage 4 SEN children and the highest number of children living in poverty in the locality.

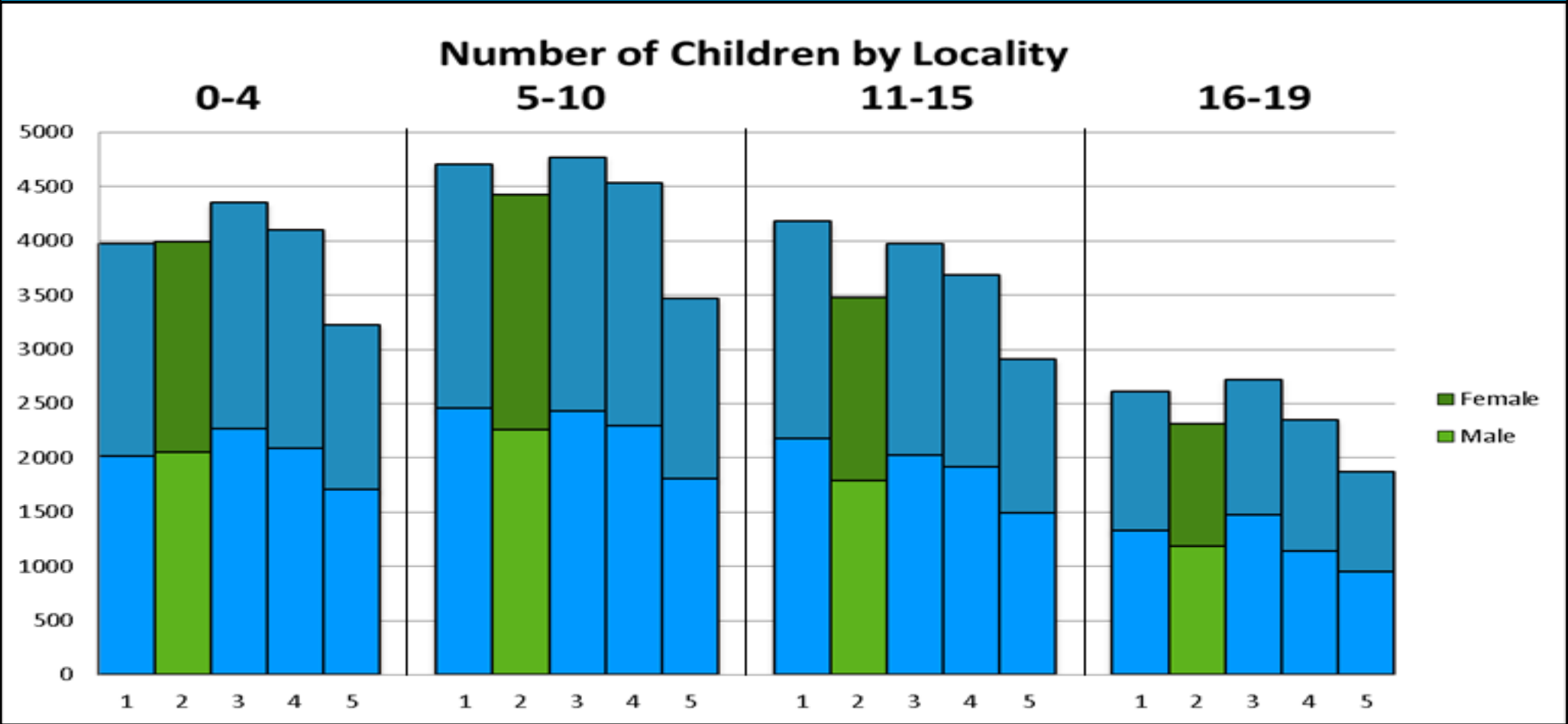
Marsh Green West has the highest number of confident families in the locality and the highest number of looked after children. Marsh Green East has the highest number of first time entrants to the youth justice system.

To gain a more general overview of each LSOA, consult the matrix on pages 39-41.

NB: A locality rank is given for each element. If a locality is ranked 1st, this would mean that the locality has the highest numbers of that element. A rank of 1st in Looked After Children would mean that that locality has the highest numbers of Looked After Children. Red lines on graphs indicate locality average. As some of the datasets contain low figures, any values under 5 (or under 10 for social care) have been suppressed to avoid identification of individuals.



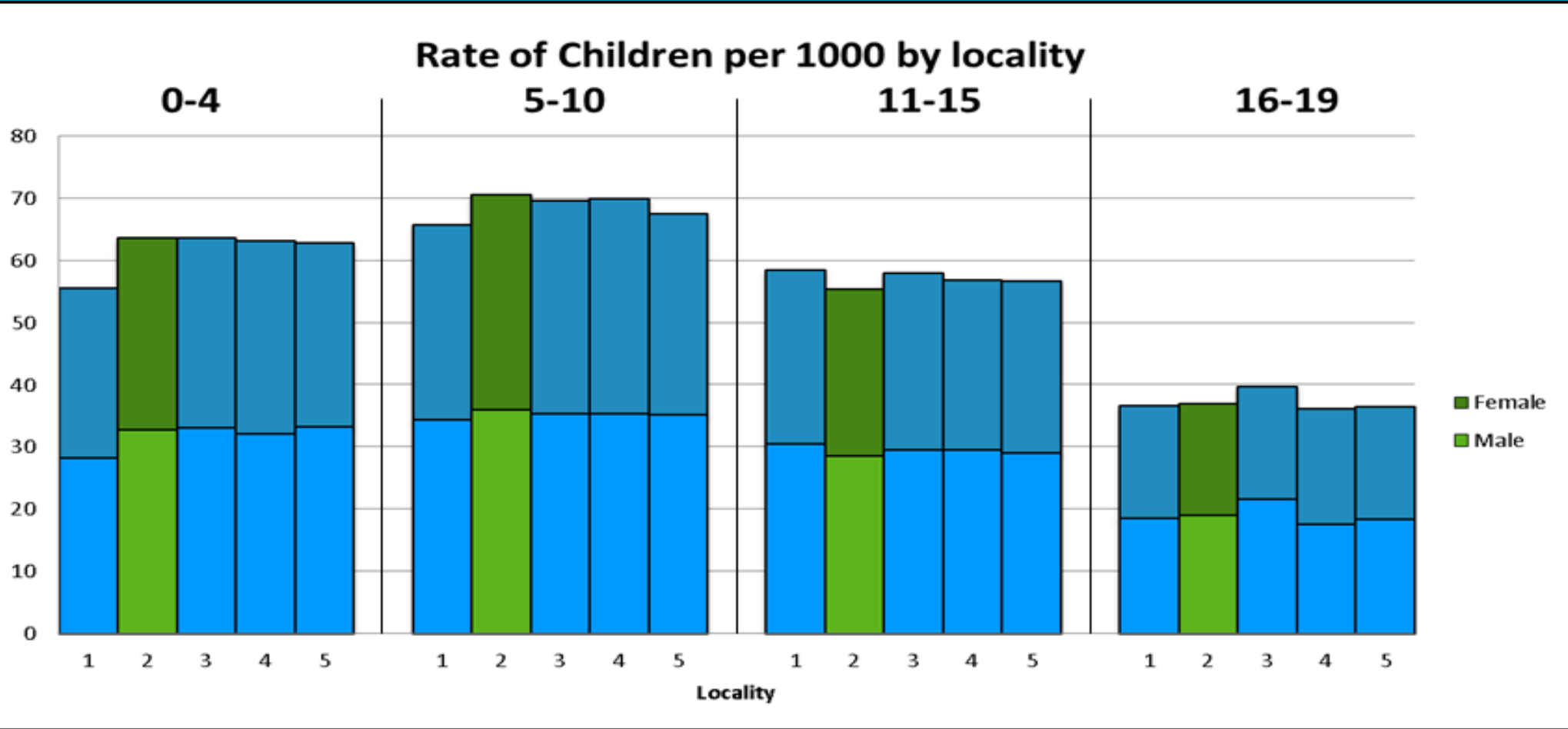
Population—Actual Figures



Overview

The number of children in locality 2 is similar to the other 4 localities, although there is a slightly lower number of children in the 11-15 category. The graph illustrates an even mix of males and females across all four age bands.

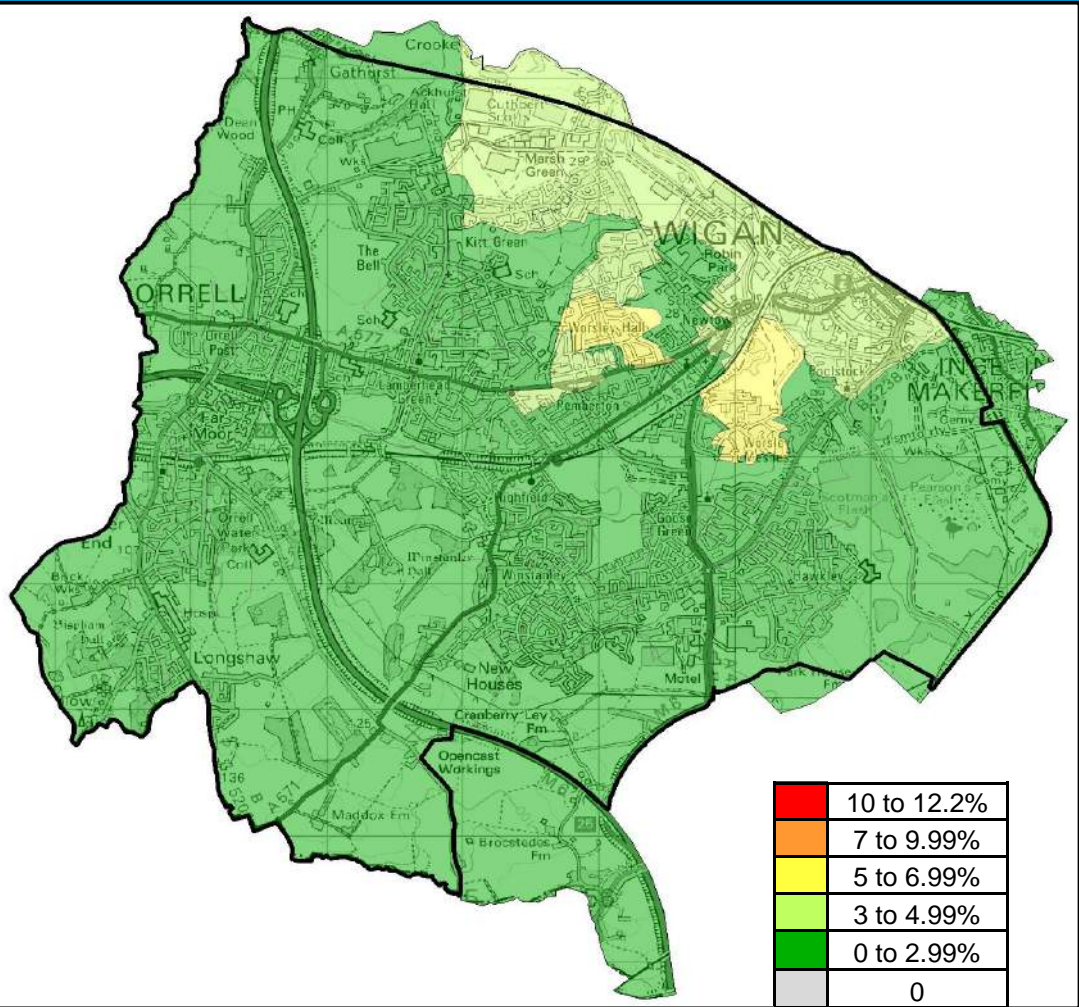
Population—Rates per 1000



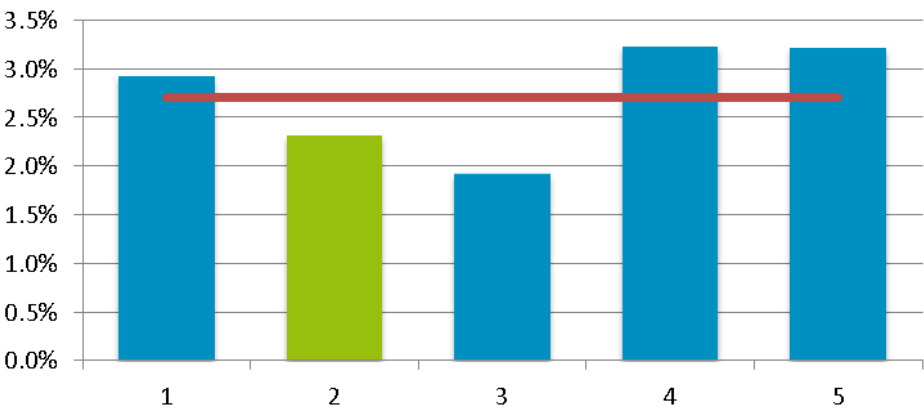
Overview

Locality 2 has a slightly highest proportion of 5-10 year olds than the other localities and the lowest proportion of 11-15 year olds although this is comparable to other locality areas.

BME Breakdown



Rate of Non-White British in Population by Locality



Overview

Locality 2 has the second lowest rate of Non-White British with 2.3% identified. Worsley Hall has the highest concentration rate of Non-White British within the locality with 6.3%.

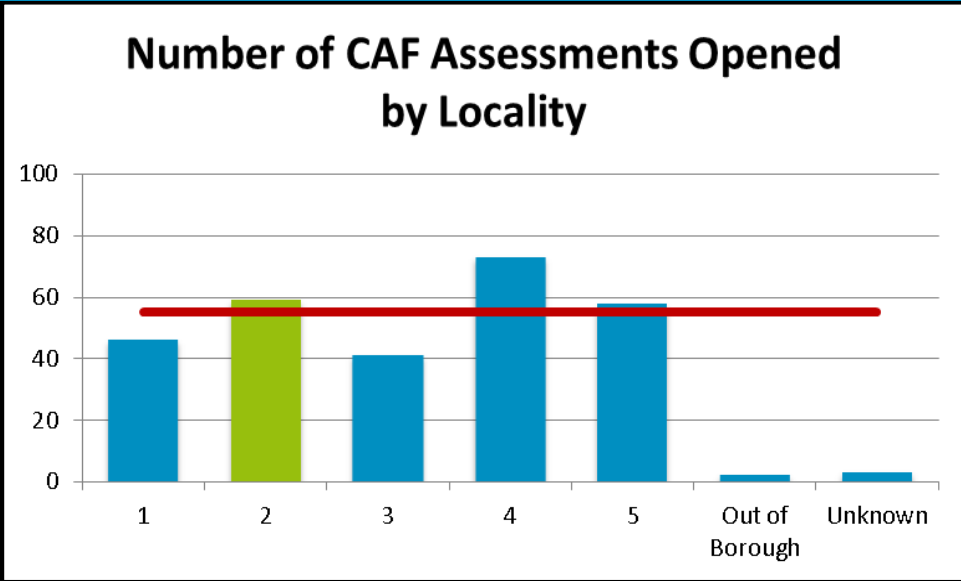
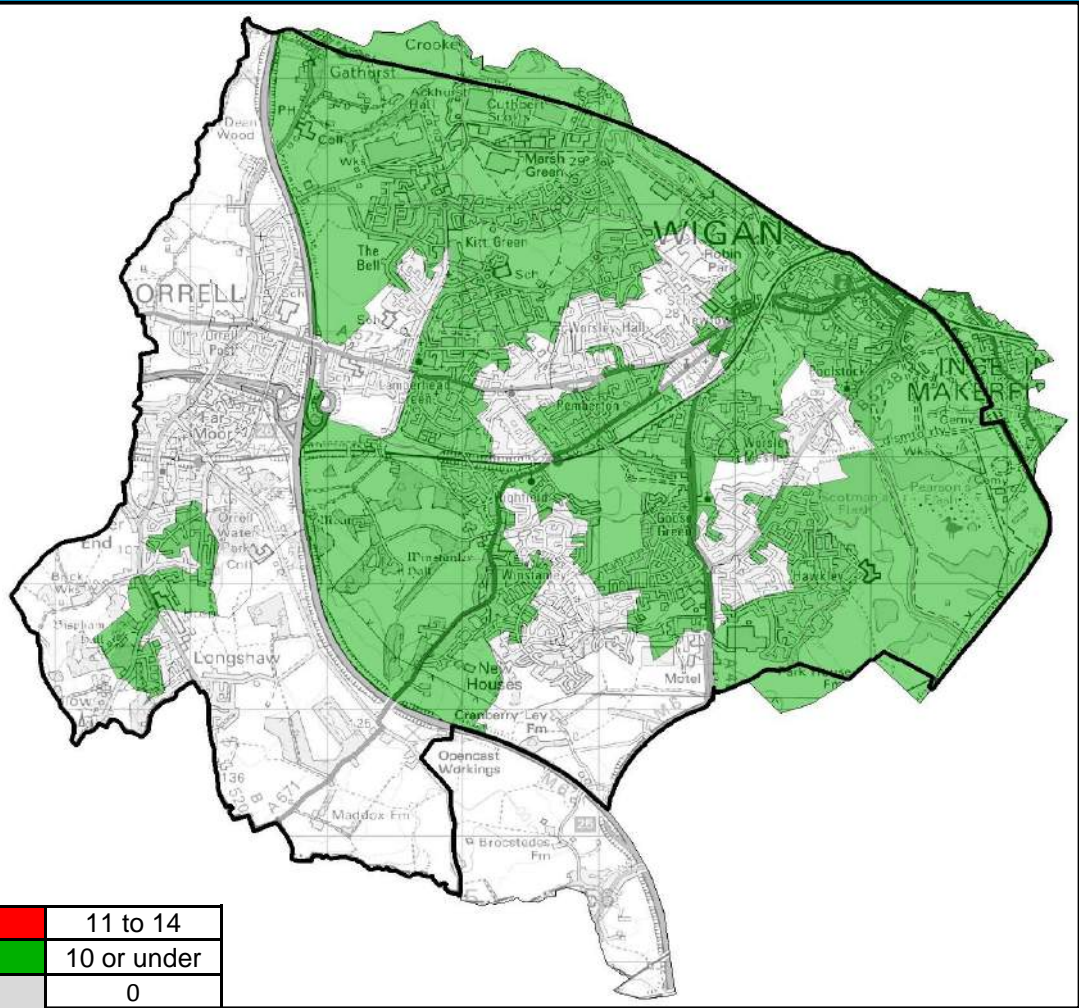
The average rate across all localities for Non-White British in population is 2.7%.

Wigan Council is in the first quartile for lowest rates of Non-White British when compared with statistical neighbours.

4th	3rd	2nd	1st
-----	-----	-----	-----

Locality Rank: 4th
Highest Concentration: Worsley Hall

CAF Assessments (Opened)



Overview

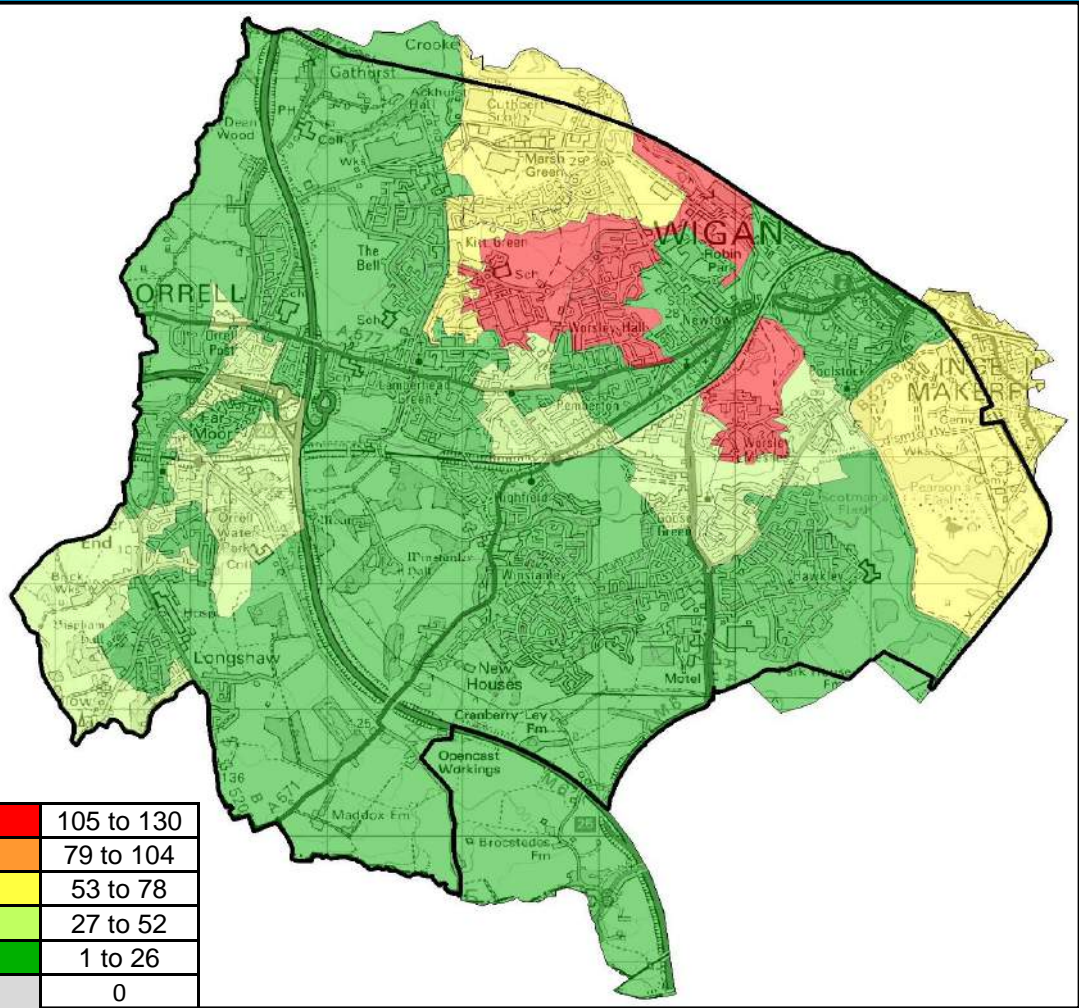
Locality 2 has the second highest number of CAF assessments opened across all localities with 46 assessments. The highest concentration of CAF assessments opened is Worsley Hall North.

The average CAF assessments across all localities is 55.

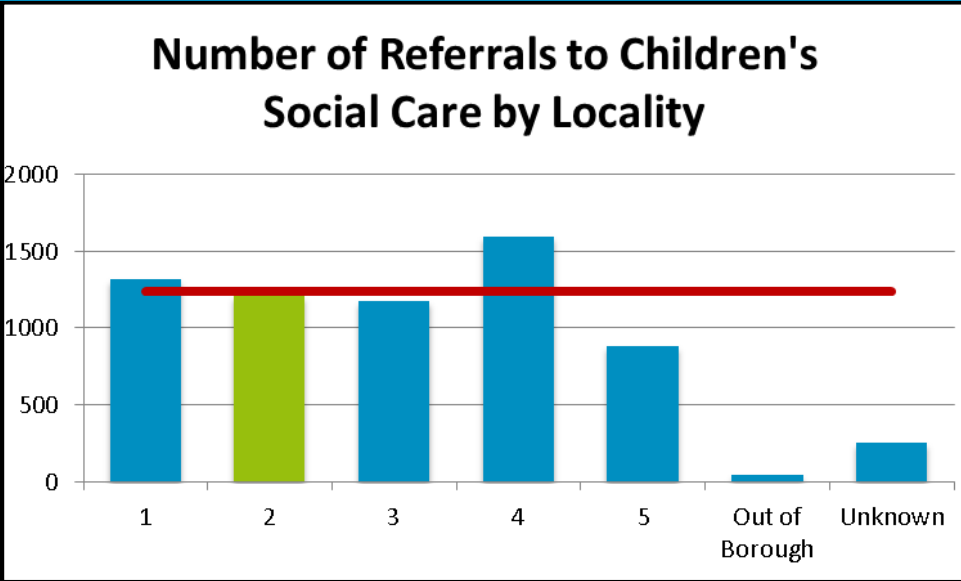
Locality Rank: 2nd

Highest Concentration: Worsley Hall North

Referrals to Children's Social Care



Locality Rank: 3rd
Highest Concentration: Worsley Hall



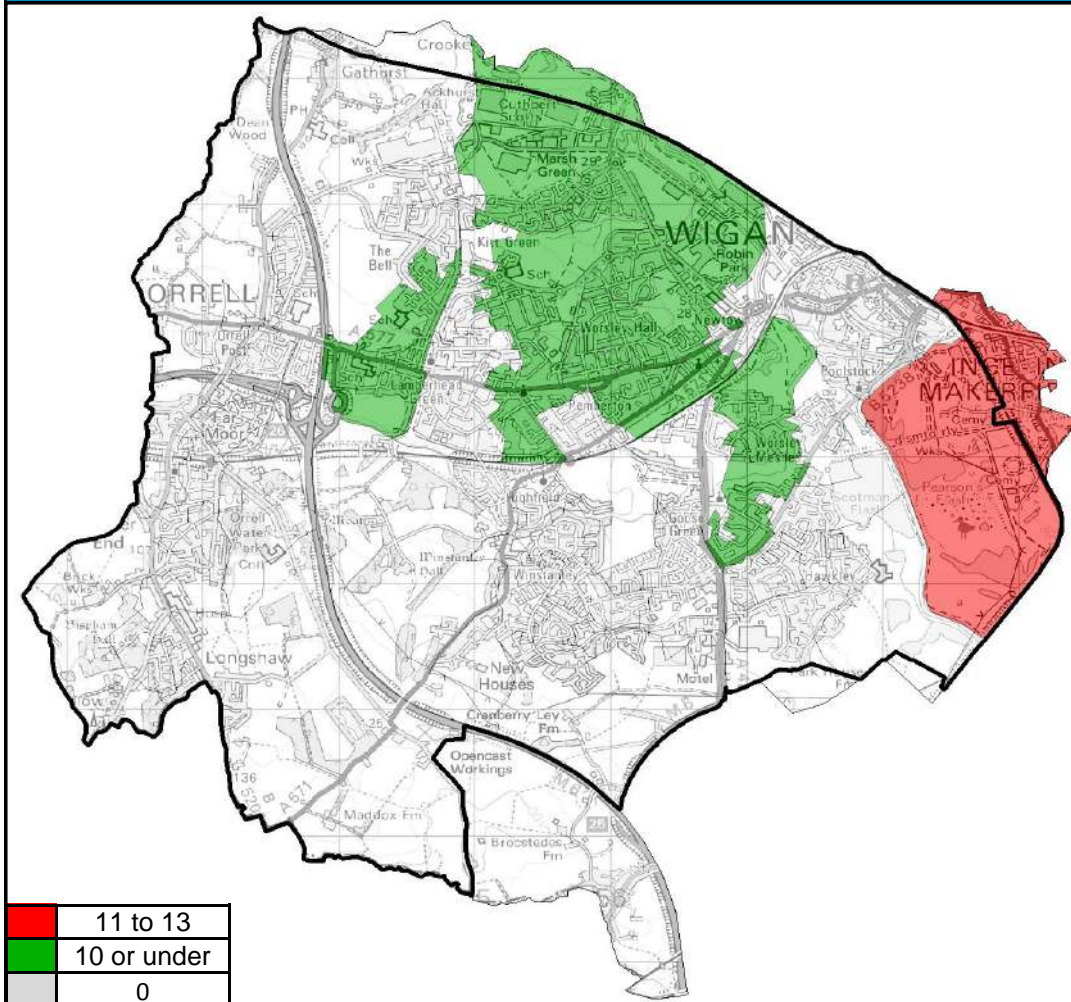
Overview

Locality 2 had the third highest number of referrals to Children's Social Care in 2013 of all Wigan Council's localities with 1213 referrals.

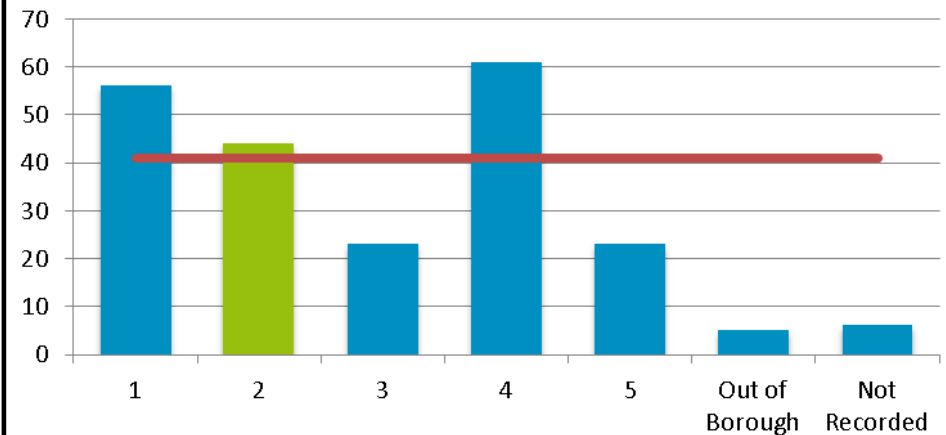
Worsley Hall had the most referrals of any LSOA in the locality with 130 referrals.

The average number of referrals to Children's Social Care in 2013 across all of the borough's Localities was 1238.

Child Protection Plans



Number of Children with a Child Protection Plan by Locality



Overview

Locality 2 has the third highest number of Children with a Protection Plan with 56 children identified.

The highest number of Children with a Protection Plan are situated in Lower Ince which is spread over Localities 1 and 2.

The average number of Children with a Protection Plan across the 5 localities is 41 children.

Wigan Council is in the second quartile for rates of CPP when compared with statistical neighbours

4th

3rd

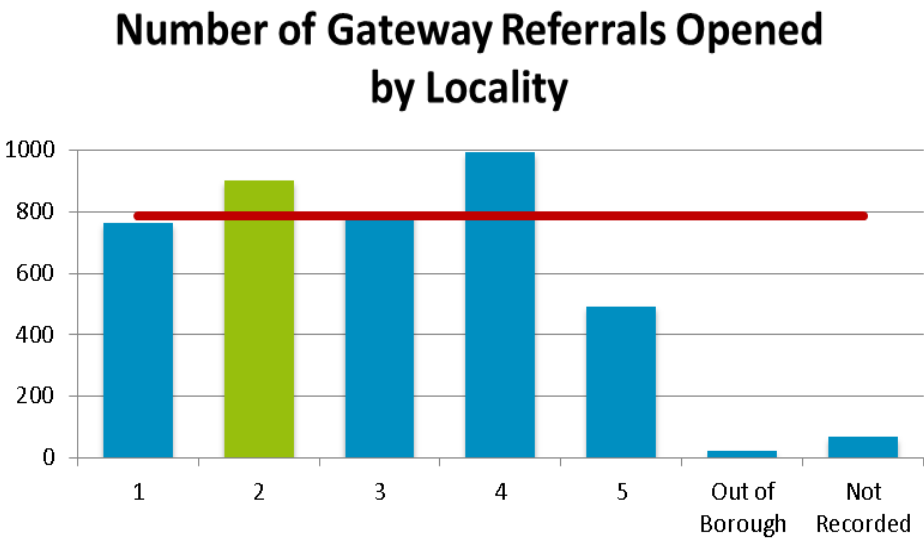
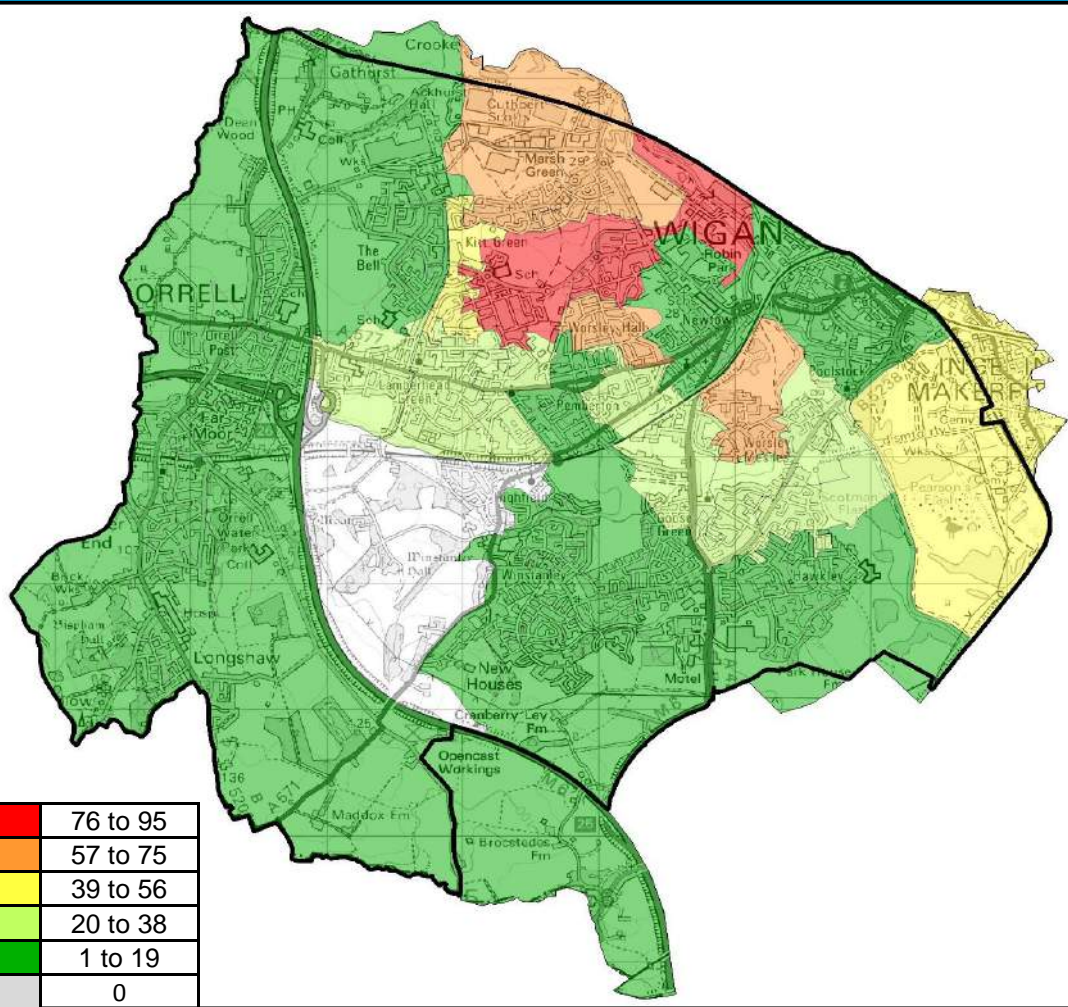
2nd

1st

Locality Rank: 3rd

Highest Concentration: Lower Ince

Gateway Referrals (Opened)



Overview

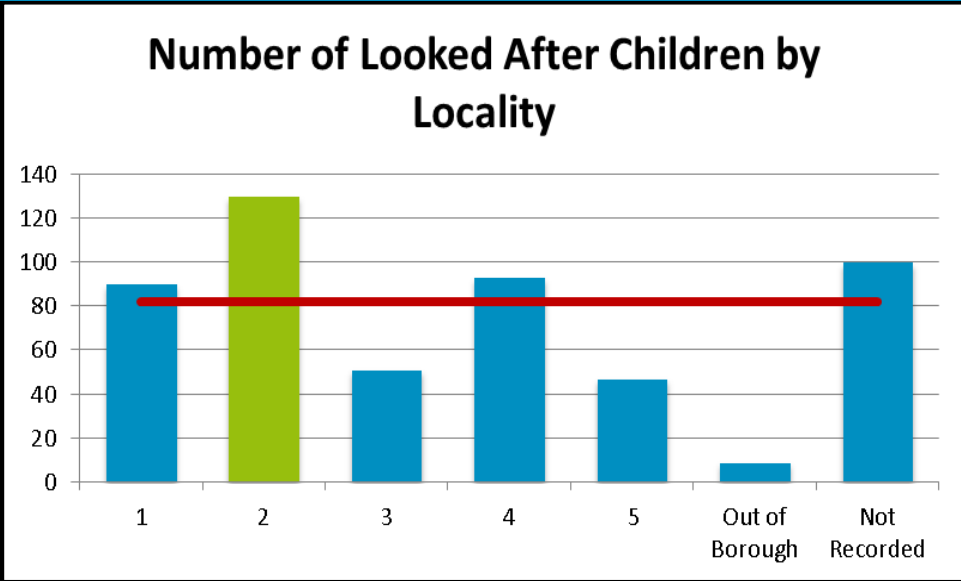
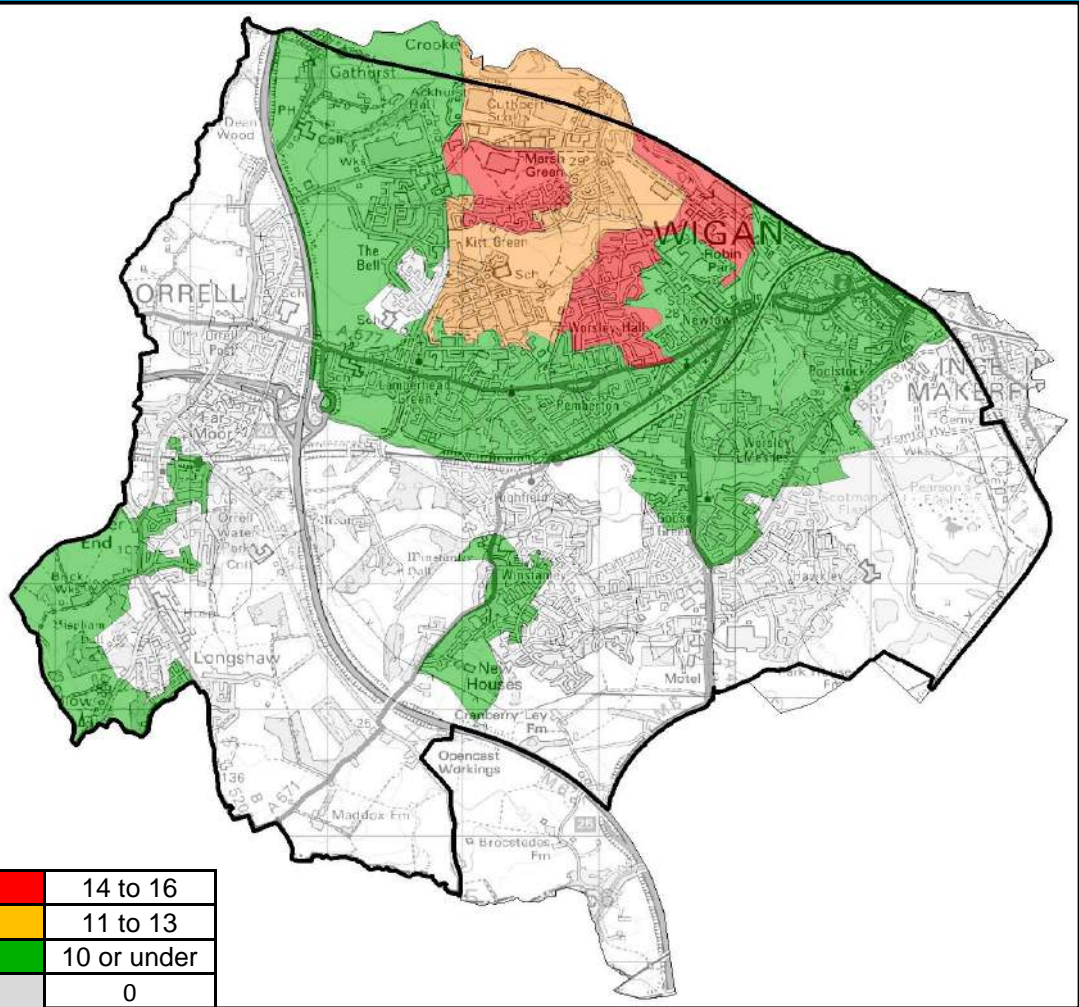
Locality 2 had the second highest number of Gateway referrals opened in 2013 of all Wigan Council’s localities with 899 opened.

The area with most gateway referrals opened in 2013 is Norley East which had in excess of 76 referrals opened.

The average number of opened gateway referrals in 2013 was 787.

Locality Rank: 2nd
Highest Concentration: Norley East

Looked After Children



Overview

Locality 2 has the highest number of Looked After Children of all Wigan Council's localities with 130 identified.

The highest number of Looked After Children are situated in Marsh Green West which has 15.

The average number of Looked After Children for all of the localities is 82 .

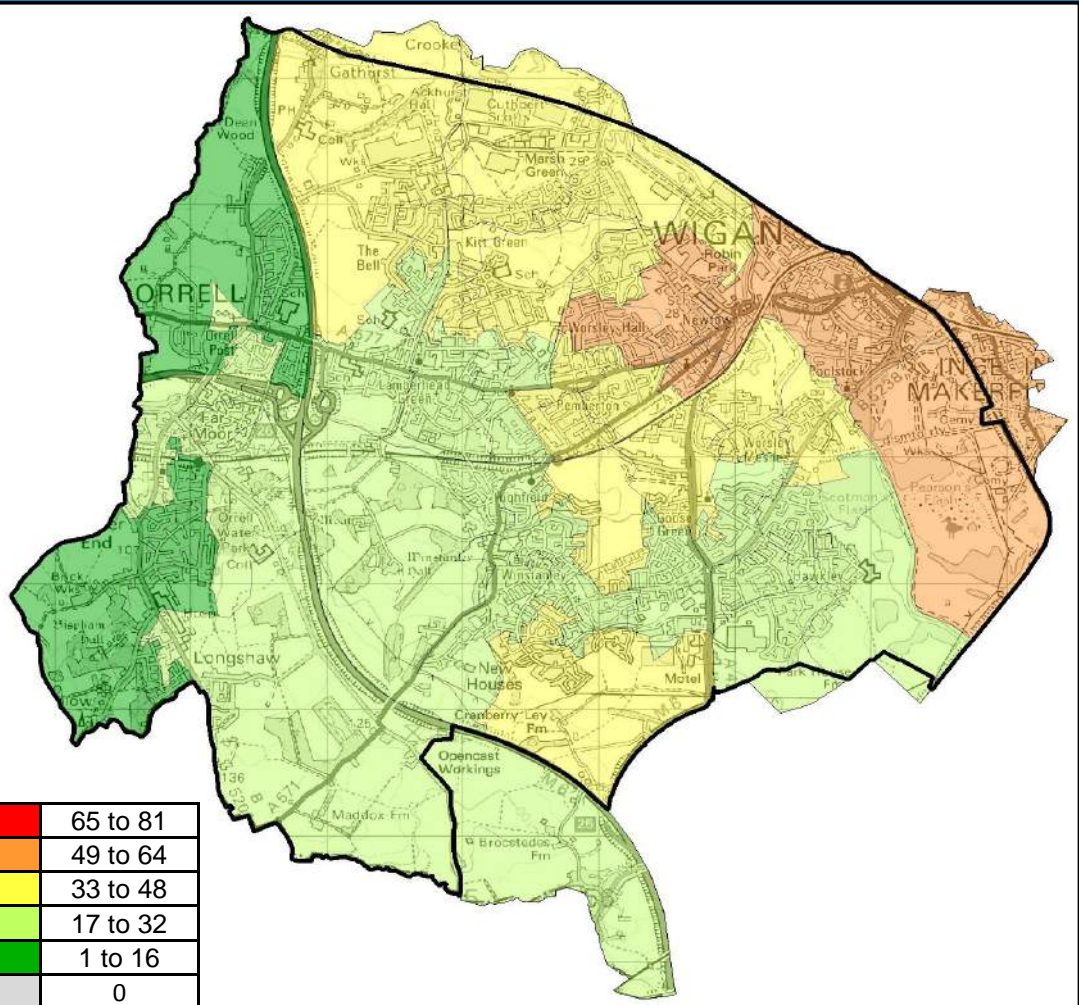
Wigan Council is in the second quartile for rates of LAC when compared with statistical neighbours

4th	3rd	2nd	1st
-----	-----	-----	-----

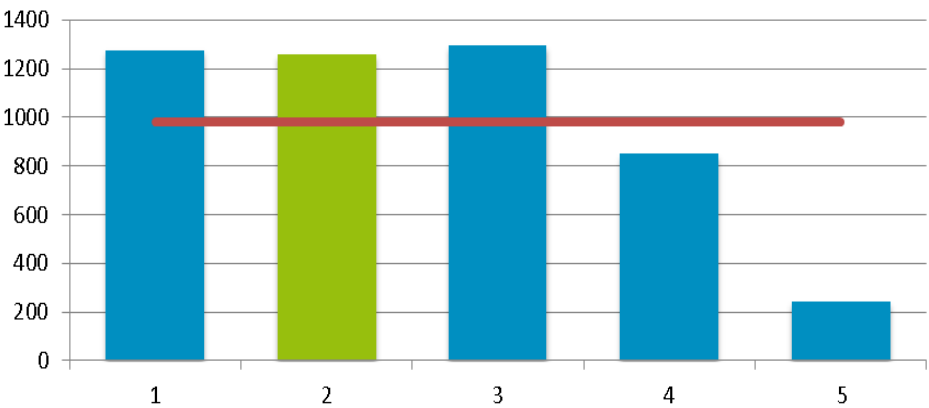
Locality Rank: 1st

Highest Concentration: Marsh Green West

A&E Attendances for Under 5s



Number of A&E Attendances for Under 5s by Locality



Overview

Locality 2 had the third highest number of A&E attendances for under 5s between April 13 and February 14 of all Wigan Council’s localities with 1260 attendances.

The areas with the highest number of attendances are closer to Wigan Hospital. Areas further away from the centre may visit other hospitals.

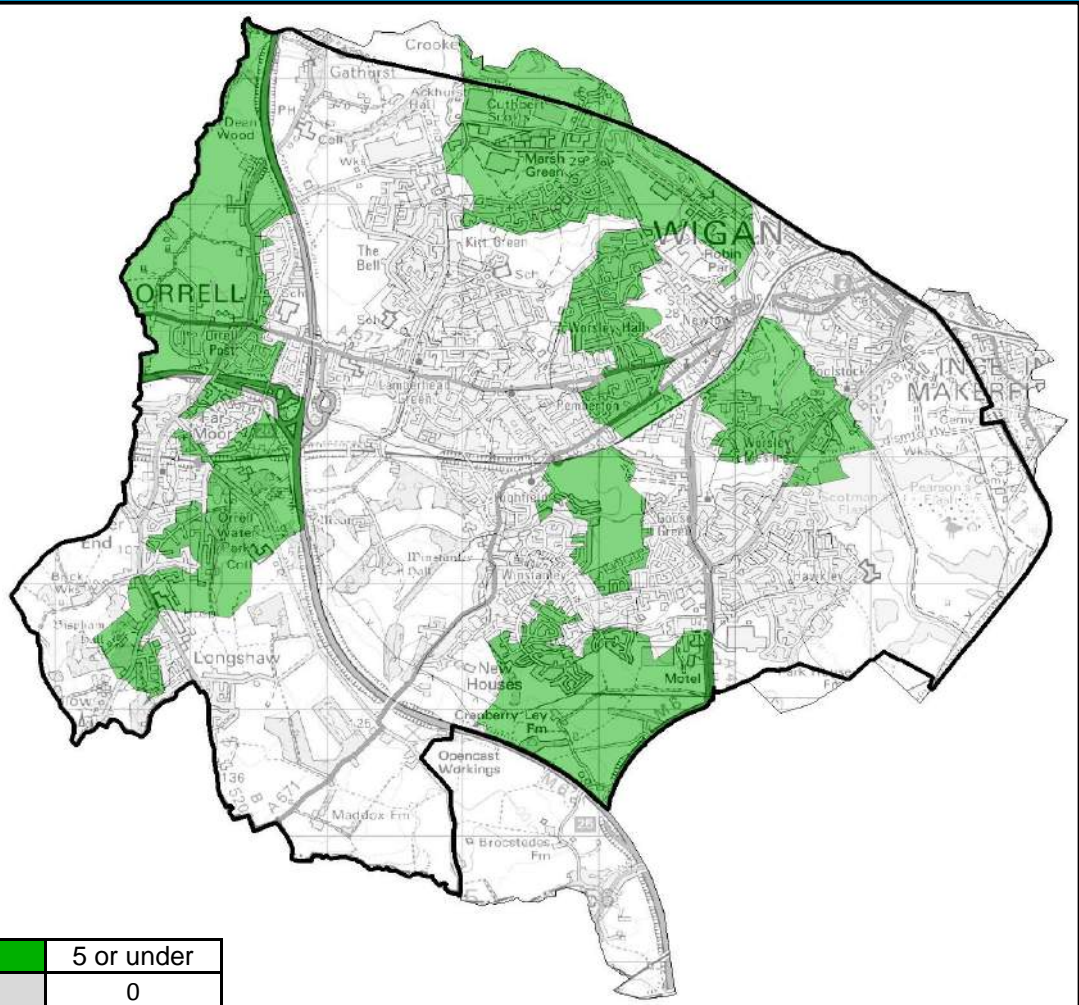
The average number of admissions across all of the Borough’s Localities is 983.

Wigan Council is in the third quartile for rates of A&E Attendances for under 5s when compared with national averages

4th	3rd	2nd	1st
-----	-----	-----	-----

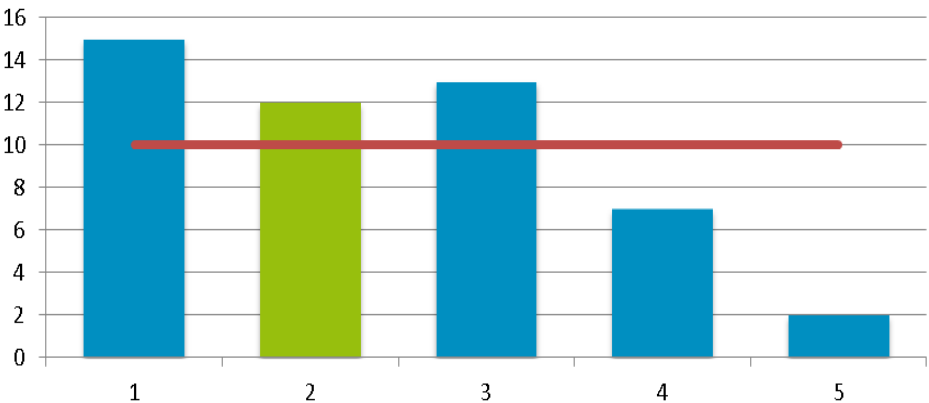
Locality Rank: 3rd
Highest Concentration: Poolstock

Alcohol Specific Hospital Stays for Under 18s



Locality Rank: 3rd

Number of Under 18 Alcohol Specific Hospital Stays by Locality

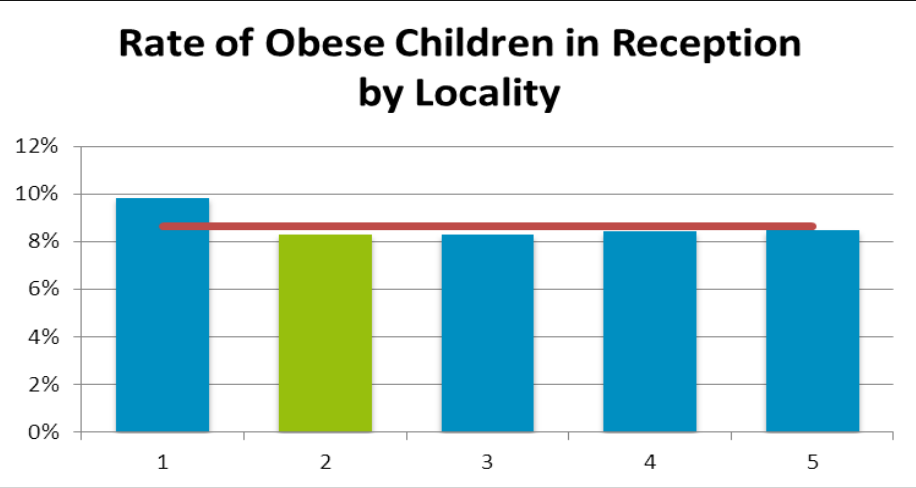
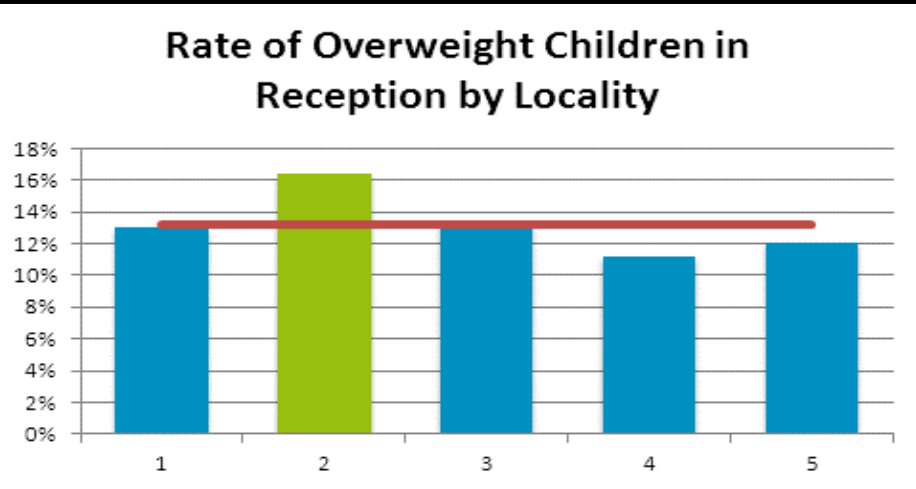
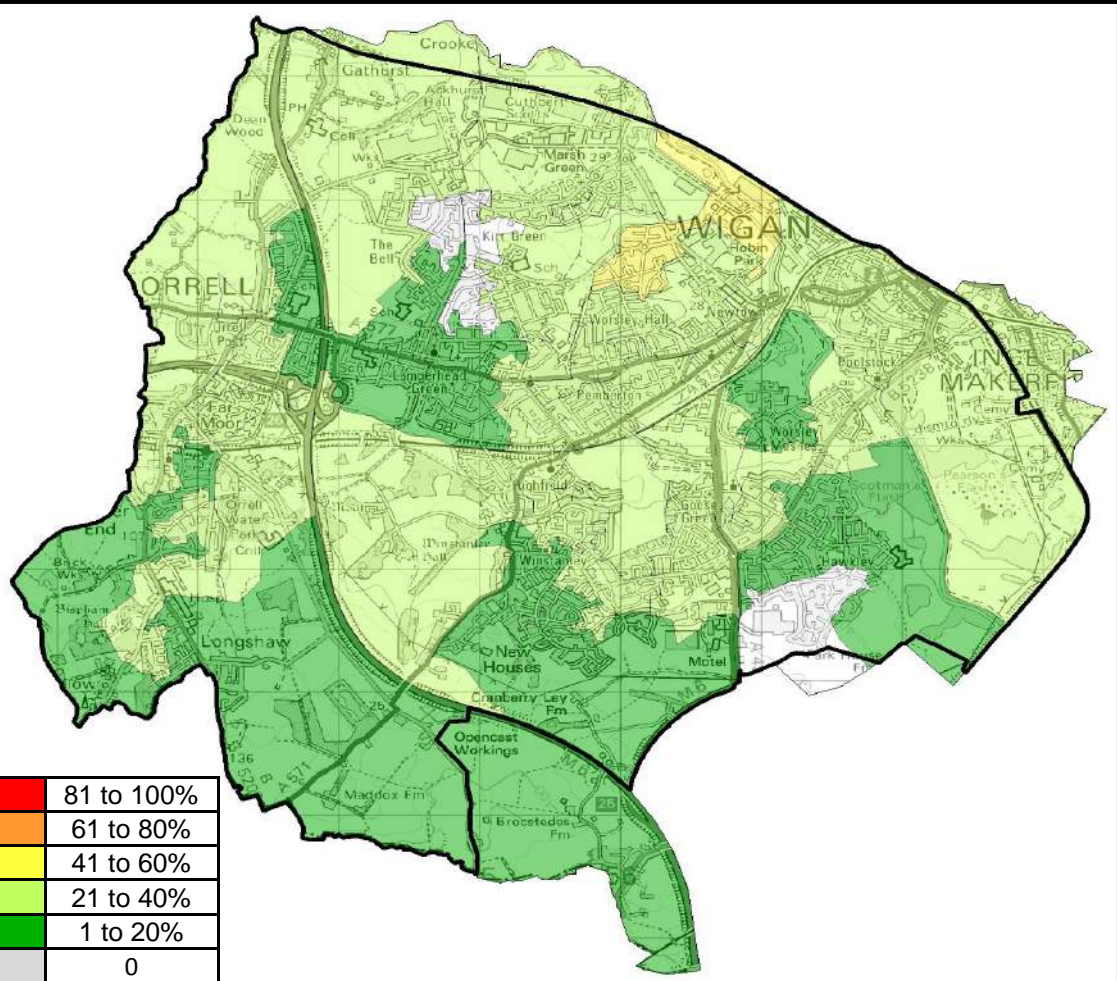


Overview

Locality 2 has the third highest number of Under 18 alcohol specific hospital stays with 12 hospital stays identified.

The average number of Under 18 alcohol specific hospital stays across all localities was 10.

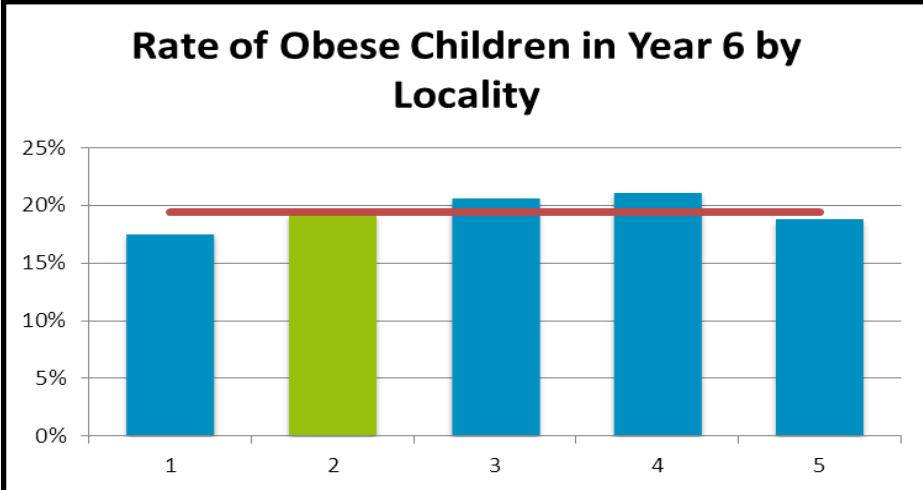
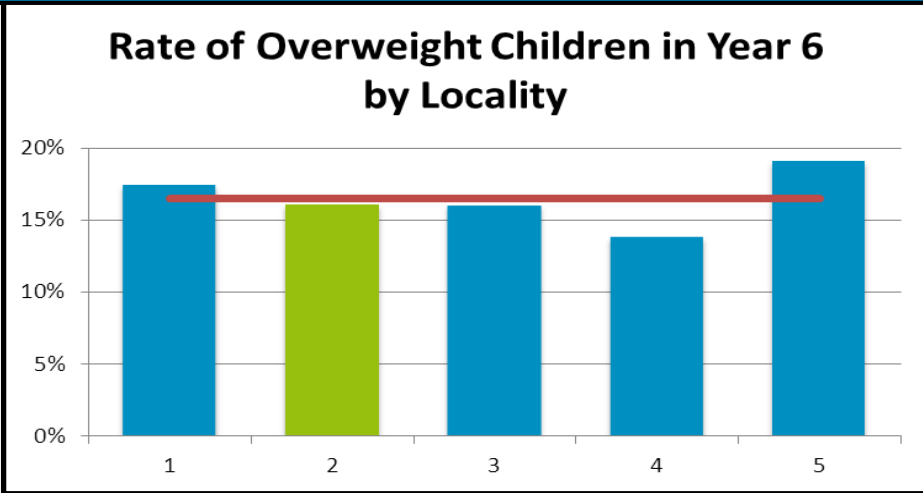
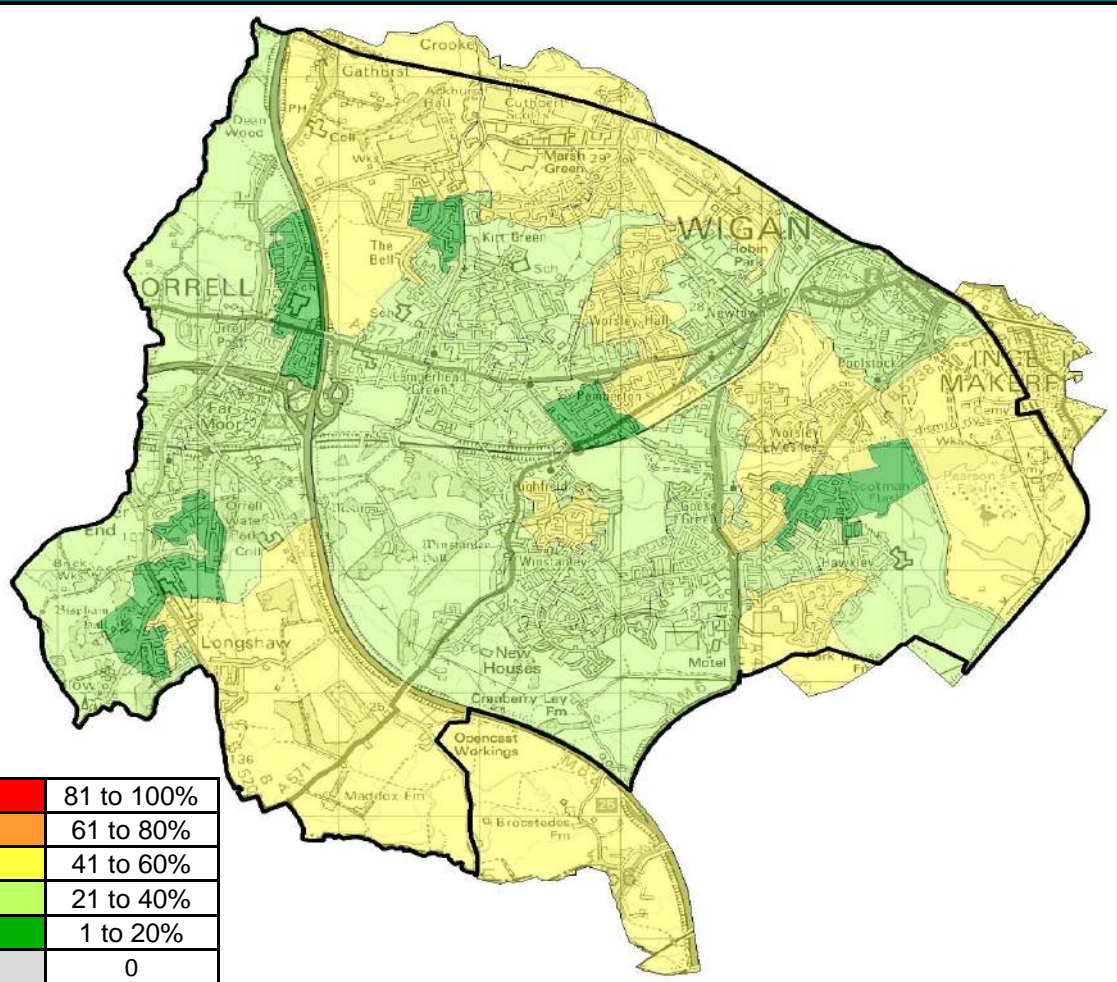
Child Obesity (Reception)



Overview		Locality 2 has the highest rate of overweight and obese children in reception when compared to other localities in the borough.	
Wigan Council is in the second quartile for performance for rates of child obesity in reception when compared with national averages			
4th	3rd	2nd	1st

Locality Rank: 1st
Highest Concentration:
Worsley Hall North

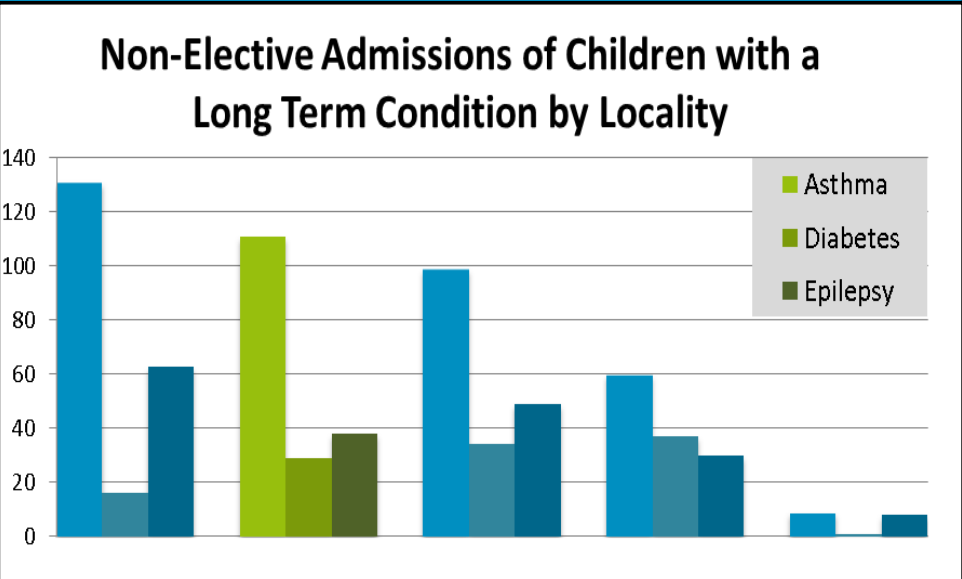
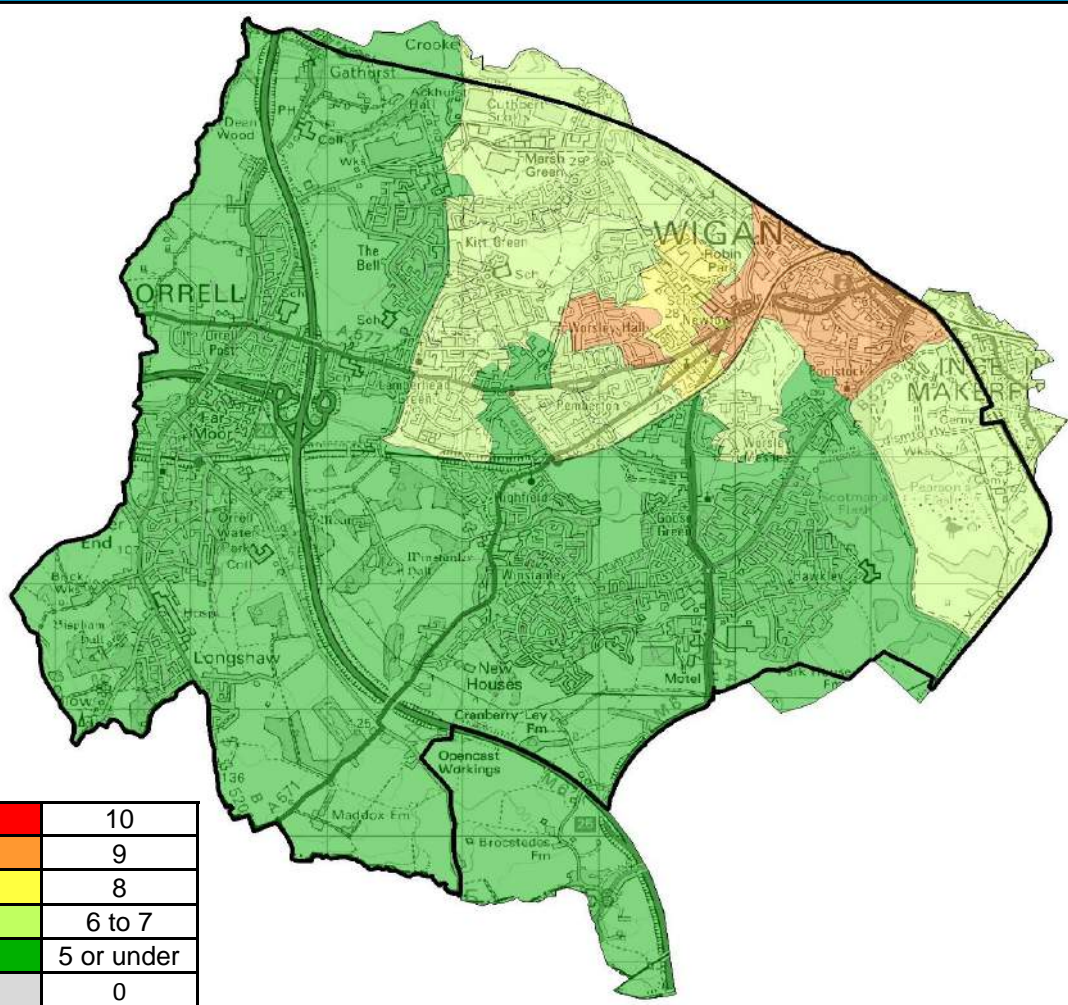
Child Obesity (Year 6)



Overview		Locality 2 has the third highest rate of overweight and obese children in Year 6. Winstanley/ Hawkley Brook is the worst affected area for child obesity in year 6.	
Wigan Council is in the second quartile for performance for rates of child obesity in year 6 when compared with national averages			
4th	3rd	2nd	1st

Locality Rank: 3rd
Highest Concentration:
Winstanley / Hawkley Brook

Non-Elective Admissions of Children with a Long-term Condition



Overview

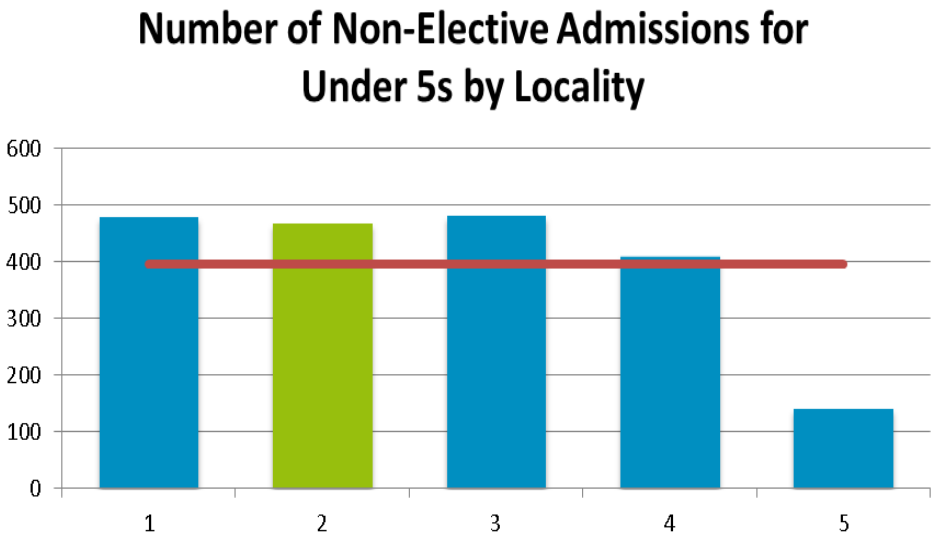
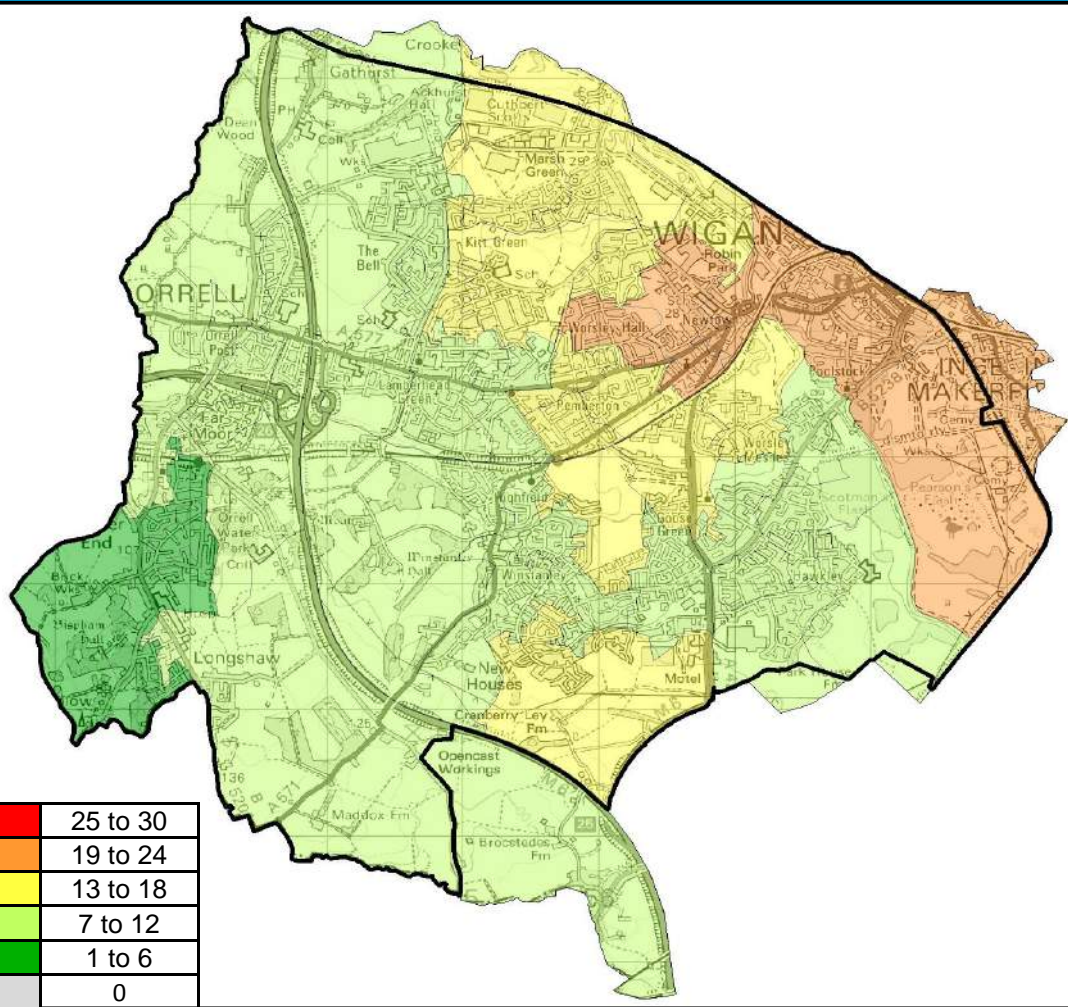
Locality 2 has the third highest number of identified Non-Elective Admissions of Children with a Long Term condition of all Wigan Council’s localities with 178 identified.

Poolstock/ Worsley Hall has the highest concentration of Non-Elective Admissions of Children with a Long Term condition within locality 2.

The average number of identified Non-Elective Admissions of Children with a Long Term condition of all Wigan Council’s localities was 143 admissions.

Locality Rank: 3rd
Highest Concentration: Poolstock & Worsley Hall

Non-elective Admissions for Under 5s



Overview

Locality 2 had the third highest number of non-elective admissions for under 5s between April 13 and February 14 of all Wigan Council's localities with 469 admissions.

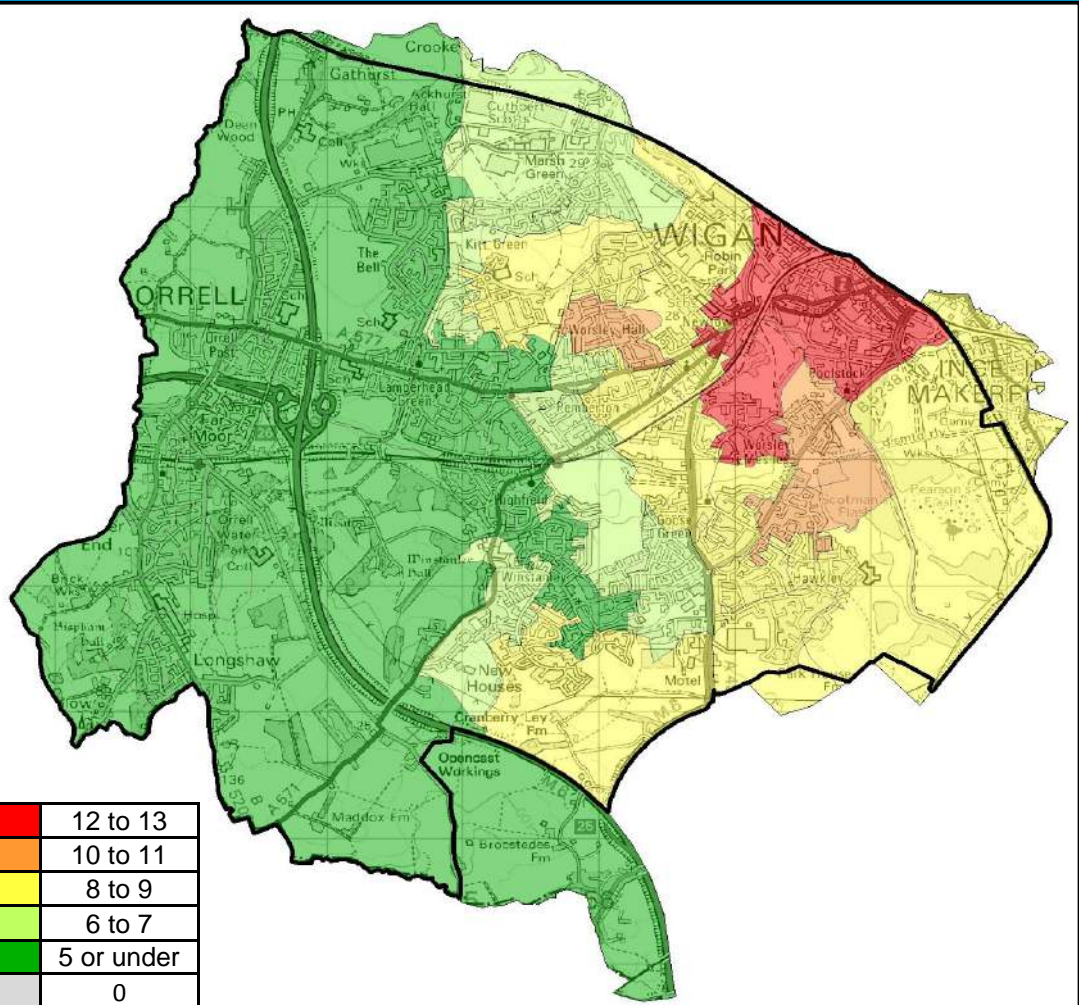
The areas with the highest number of admissions are closer to Wigan Hospital. Areas further away from the centre may visit other hospitals.

The average number of admissions across all of the Borough's Localities is 396.

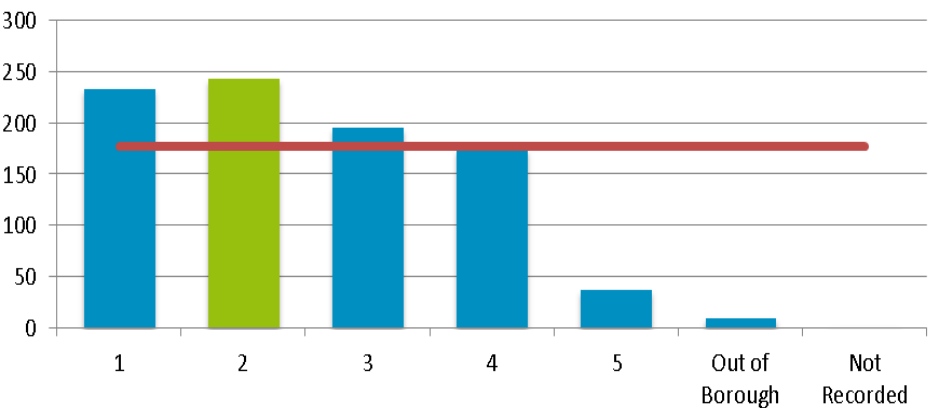
Locality Rank: 3rd

Highest Concentration: Poolstock & Worsley Hall

Non-elective Activity for Intentional and Unintentional Injuries



Total of Non-Elective Activity Intentional and Unintentional Injuries by Locality



Overview

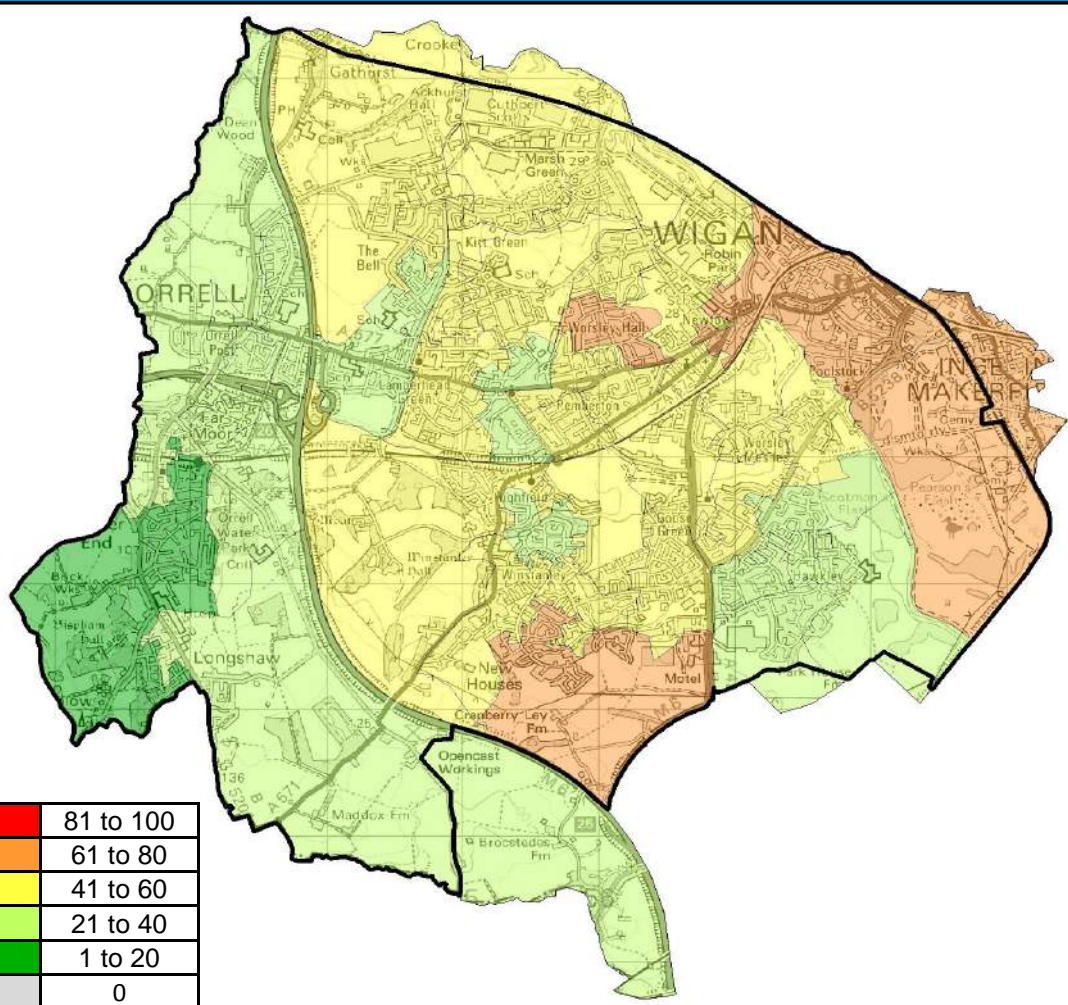
Locality 2 has the highest number of Non-Elective activity intentional and unintentional injuries with 243 injuries.

The average number of Non-Elective activity intentional and unintentional injuries across all localities is 177.

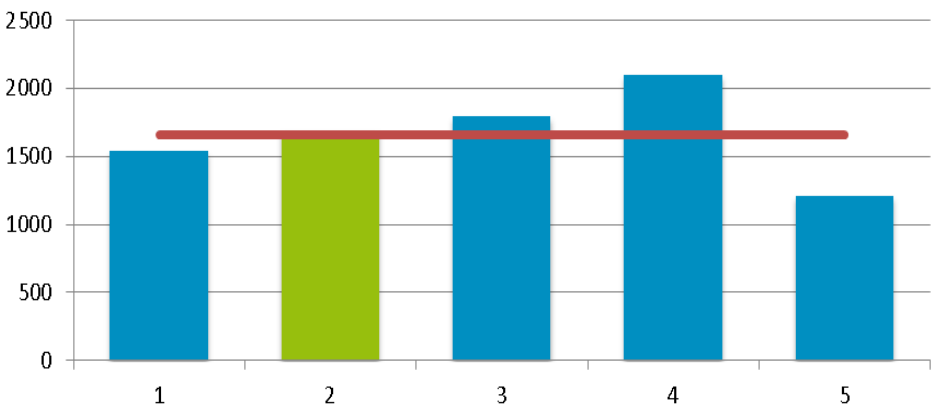
Locality Rank: 1st

Highest Concentration: Worsley Mesnes North

Outpatient Appointments for Under 5s



Number of Outpatient Appointments for Under 5s by Locality



Overview

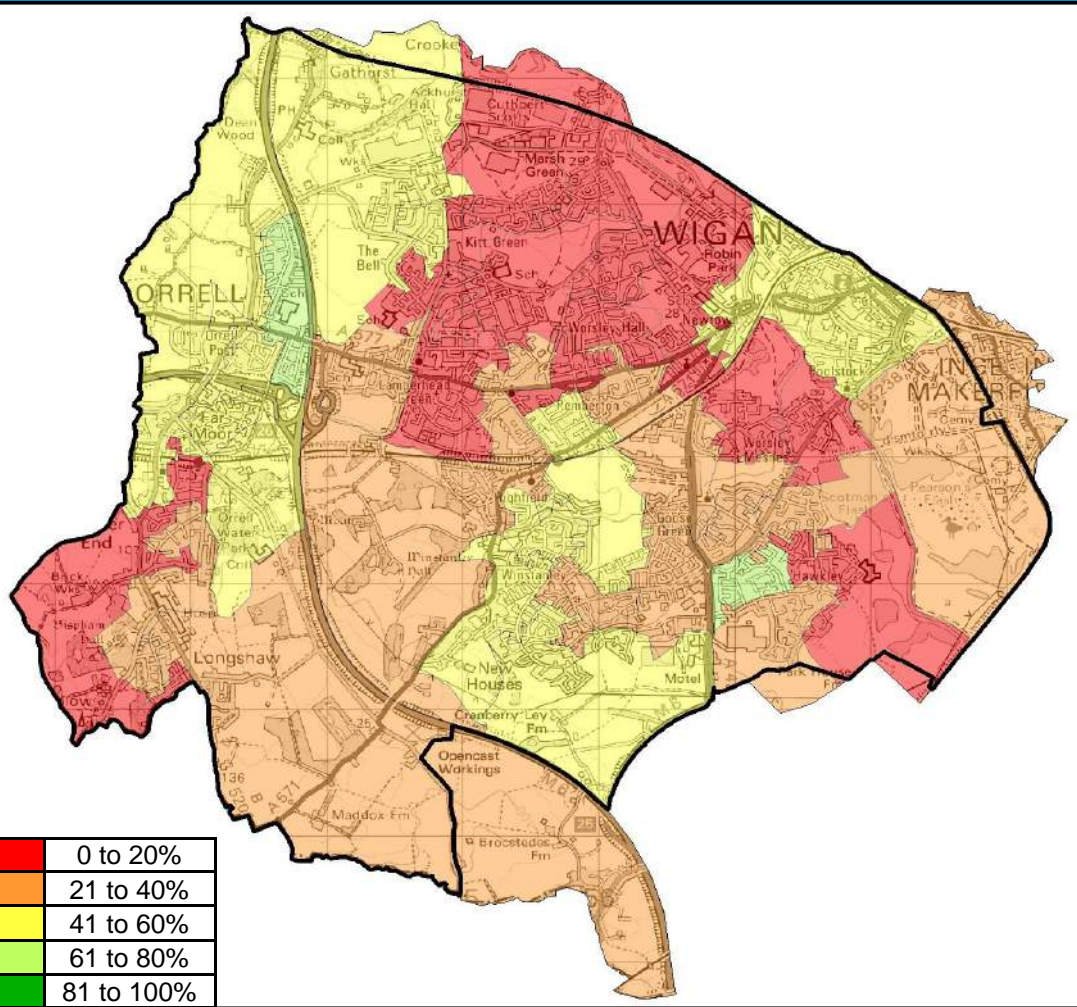
Locality 2 has the 3rd highest number of Outpatient Appointments for Under 5s with 1689 children identified. The highest concentration of Outpatient Appointments for Under 5s are in Poolstock with 73 children.

The average number of Outpatient Appointments for Under 5s across all localities is 1662.

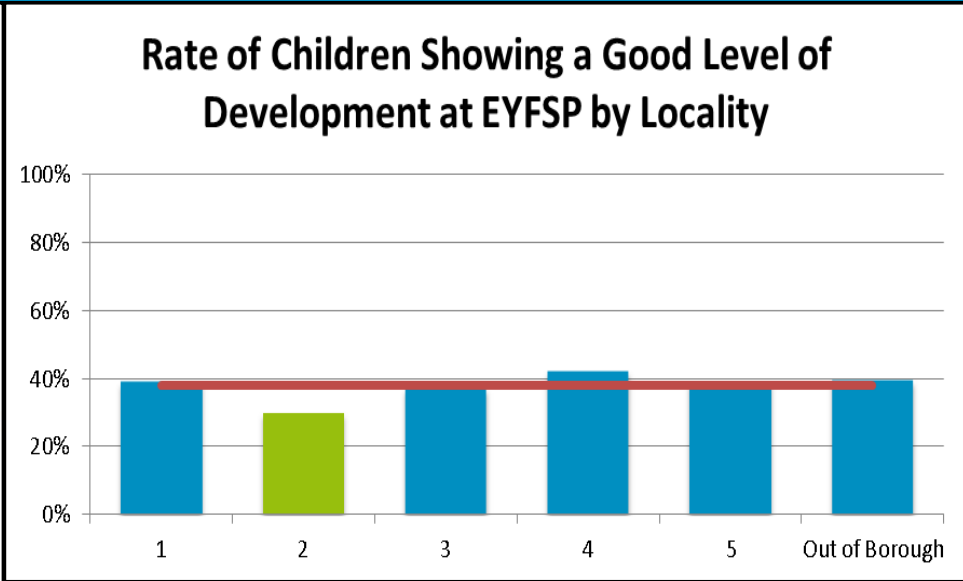
Locality Rank: 3rd

Highest Concentration: Poolstock

EYFSP—Children Showing a Good Level of Development



Locality Rank: 1st
Lowest Concentration: Norley East



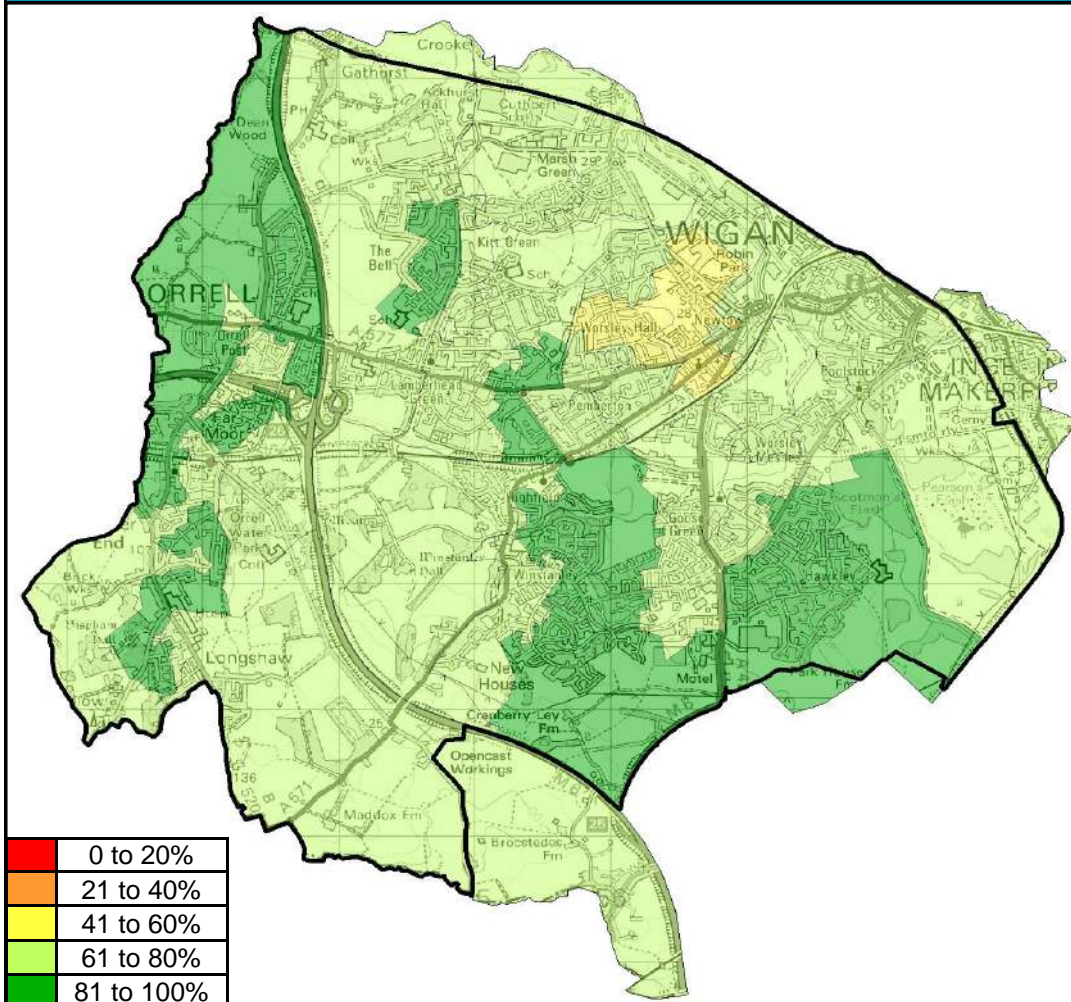
Overview

Locality 2 has the lowest rate of children showing a good level of development at EYFSP by locality with 30% significantly below borough average of 38%. Norley East has the lowest concentration of children showing a good level of development at EYFSP within locality 1.

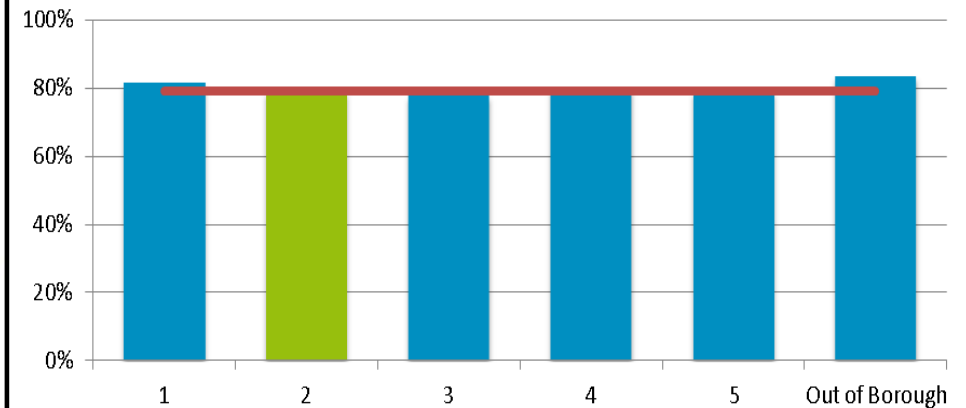
Wigan Council is in the bottom quartile for performance for rates of Children showing a good level of development when compared with statistical neighbours

4th	3rd	2nd	1st
-----	-----	-----	-----

Attainment at Key Stage 2



Rate of Children Achieving Level 4 Reading, Writing and Maths at KS2 by Locality



Overview

Locality 2 has the joint 3rd highest rate of children achieving level 4 in Reading, Writing and Mathematics at key stage 2 with 81%. The lowest concentration within locality 2 is Worsley Hall .

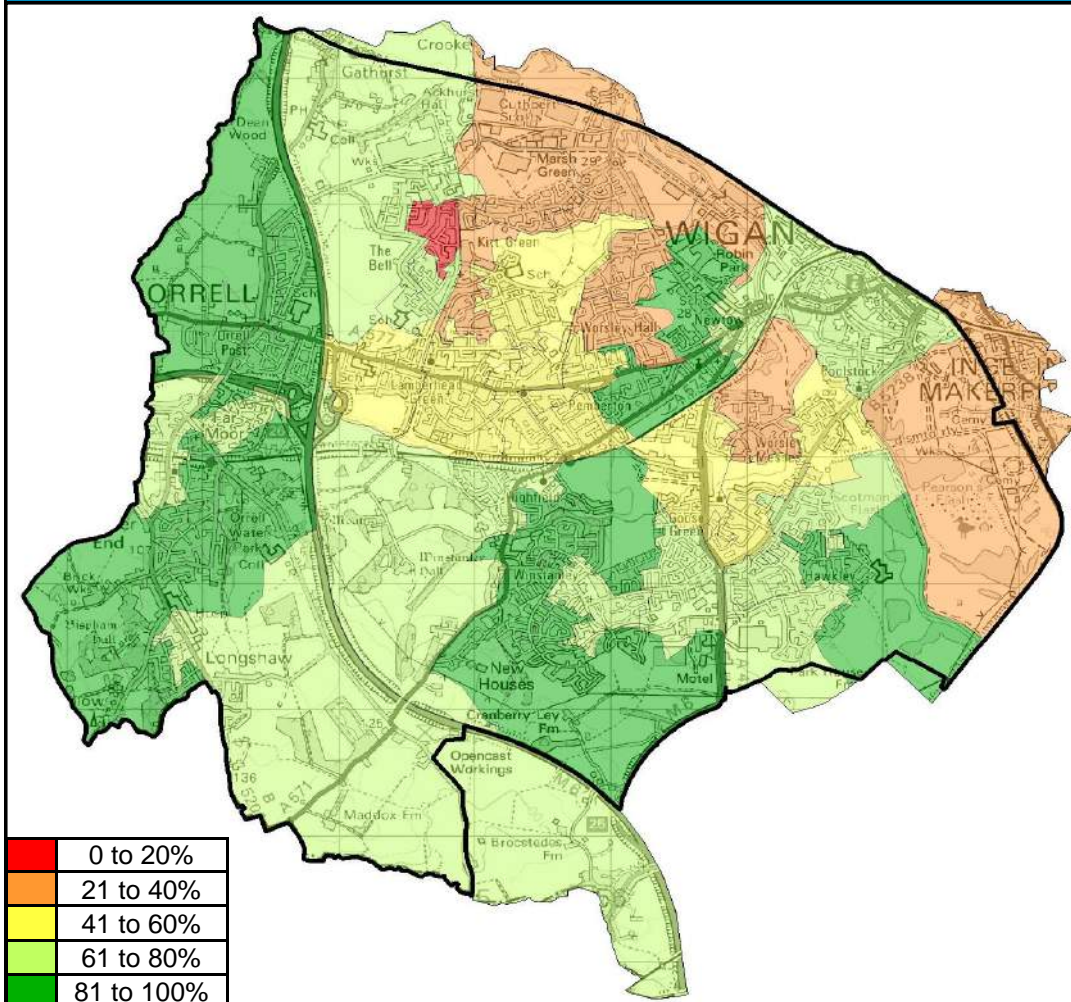
The average across all localities is 79%.

Wigan Council is in the top quartile for performance for attainment at KS2 when compared with statistical neighbours

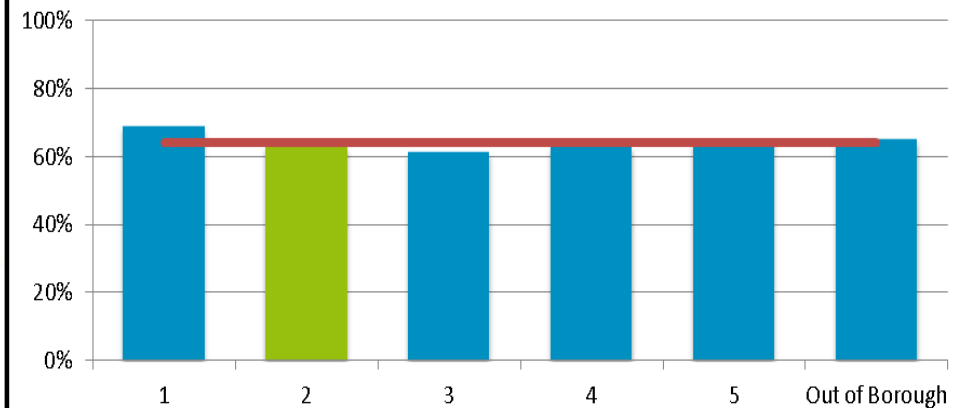
4th	3rd	2nd	1st
-----	-----	-----	-----

Locality Rank: 4th
Lowest Concentration: Worsley Hall

Attainment at Key Stage 4



Rate of Children Achieving 5 A*-C GCSEs at KS4 by Locality



Overview

Locality 2 has the joint 3rd lowest rate of children achieving 5A*-C GCSEs at KS4 by locality with 63%. The lowest concentration within locality 1 is Kitt Green with 20%.

The average across all localities is 64%.

Wigan Council is in the **first** quartile for rates of attainment at KS4 when compared with statistical neighbours.

4th

3rd

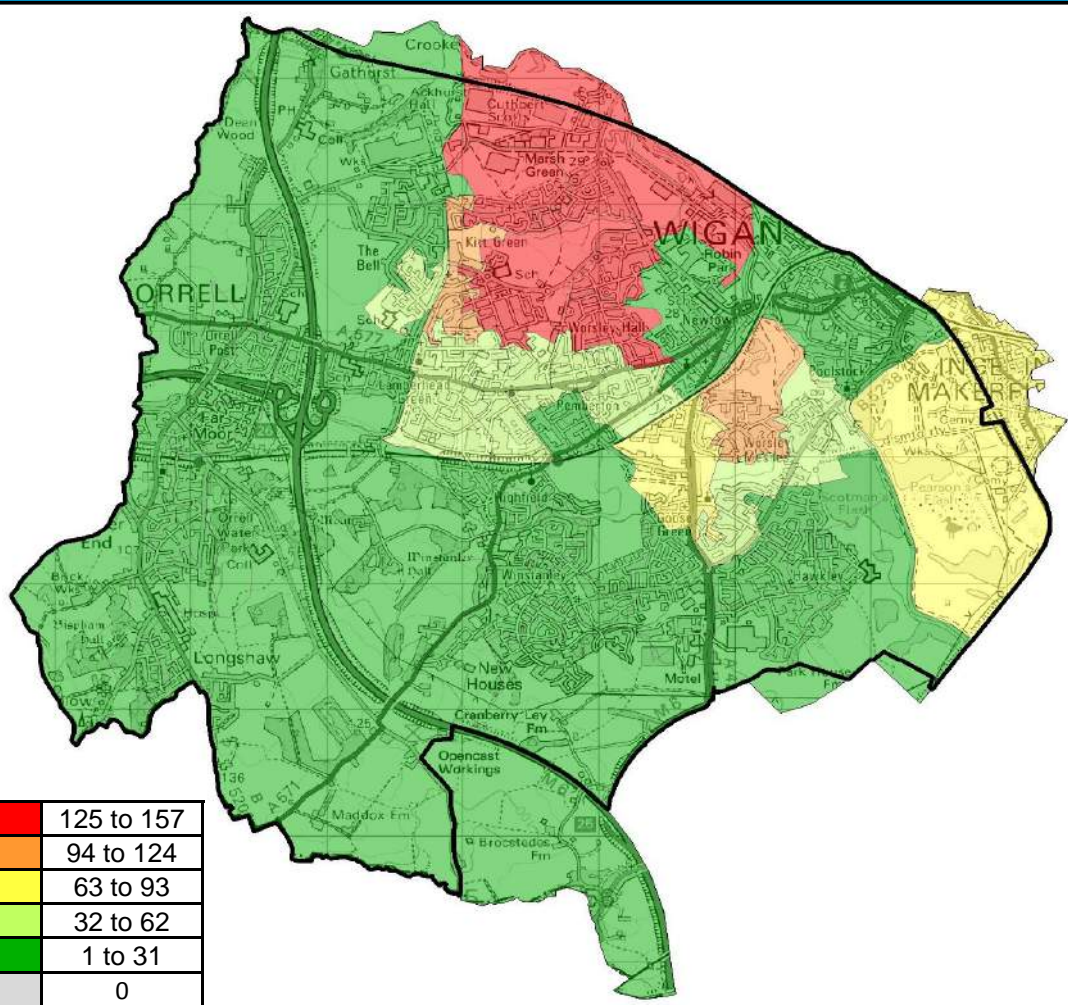
2nd

1st

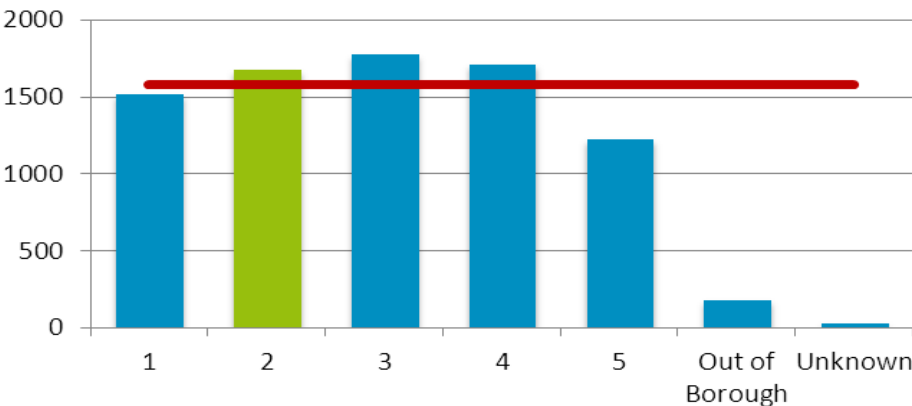
Locality Rank: 3rd

Lowest Concentration: Kitt Green

Eligibility for Free School Meals



Number of Children Eligible for Free School Meals by Locality



Overview

Locality 2 has the third highest number of children that are eligible for free school meals with 1678 eligible as at January 2014.

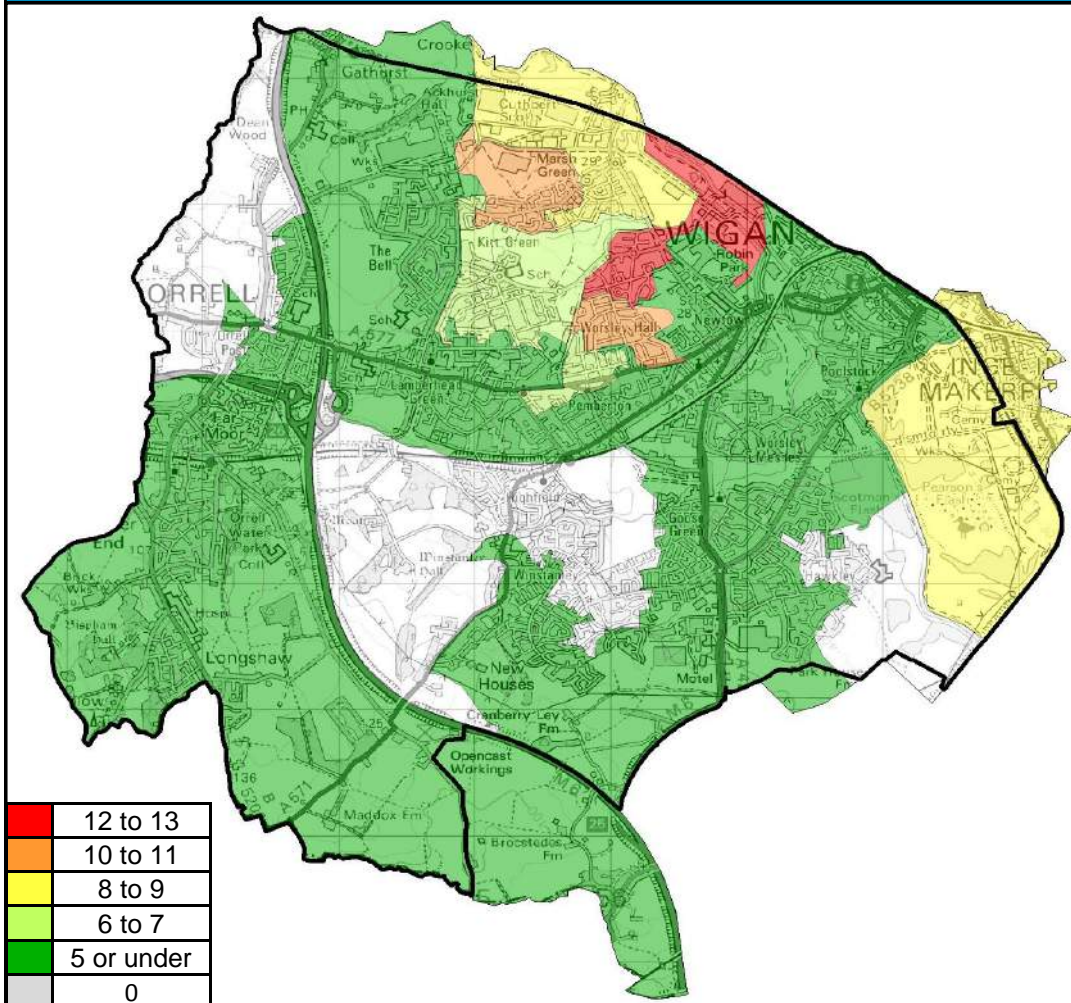
Norley East has the highest concentration of eligible children in the borough with 157 children eligible for free school meals.

The Locality average is 1579 eligible children.

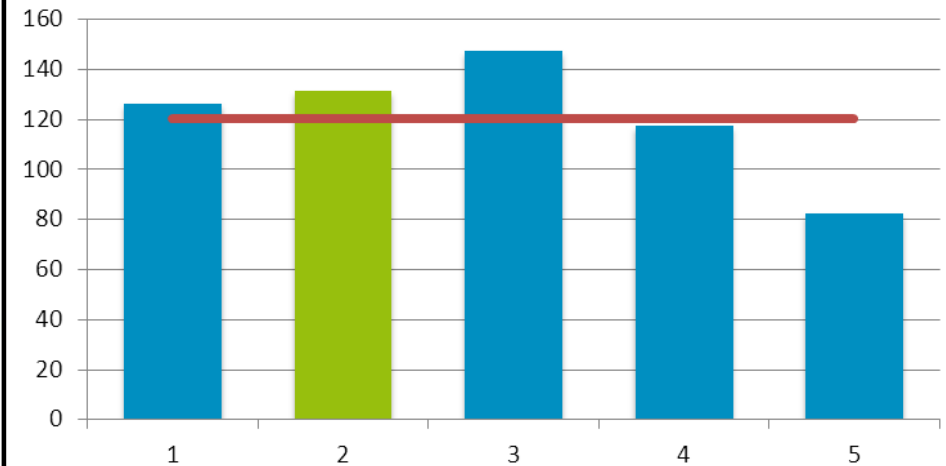
Locality Rank: 3rd

Highest Concentration: Norley East

NEET (16-18)



Number of NEET 16-18 by Locality



Overview

Locality 2 has the second highest number of identified NEET 16-18 year olds of all Wigan Council's localities with 131 identified.

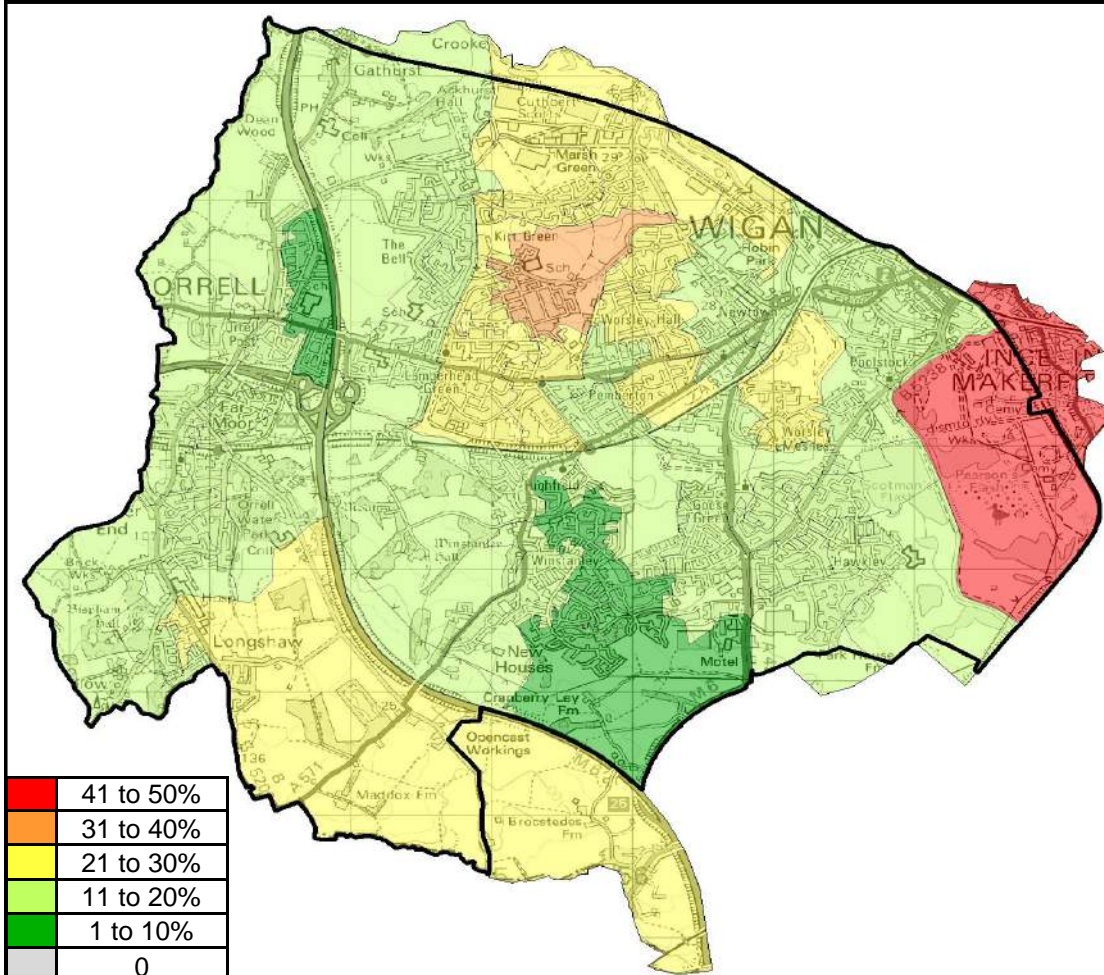
The average across the borough is 121.

Wigan Council is in the second quartile for rates of NEET (16-18) when compared with statistical neighbours.

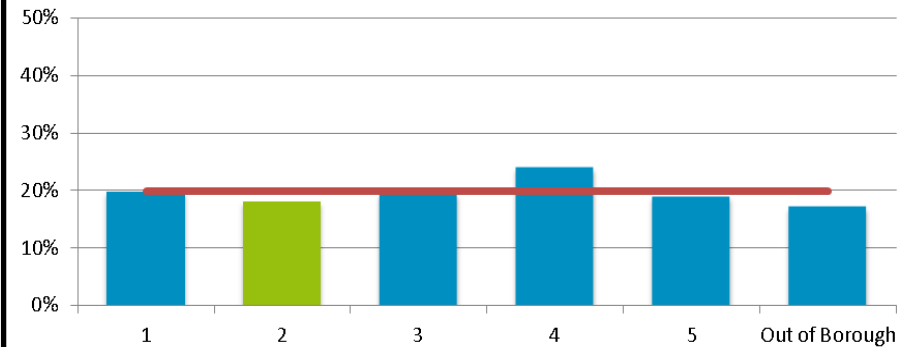
Locality Rank: 2nd
Highest Concentration: Worsley Hall North

4th	3rd	2nd	1st
-----	-----	-----	-----

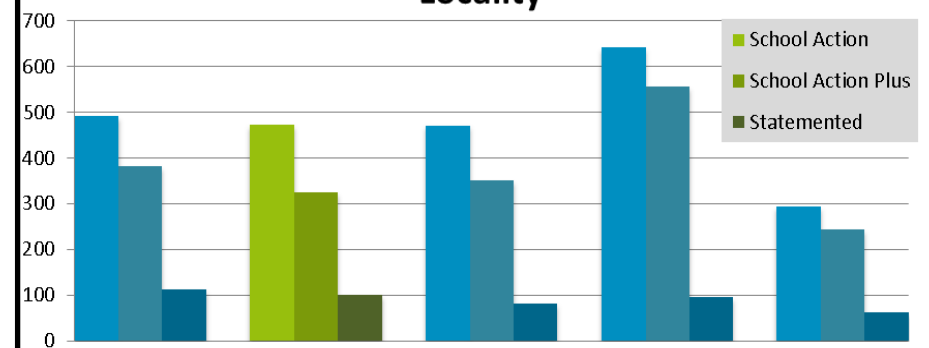
Children with a Level of SEN (Primary)



Rate of Primary School Children with a Level of SEN by Locality



Breakdown of SEN levels (Primary) by Locality



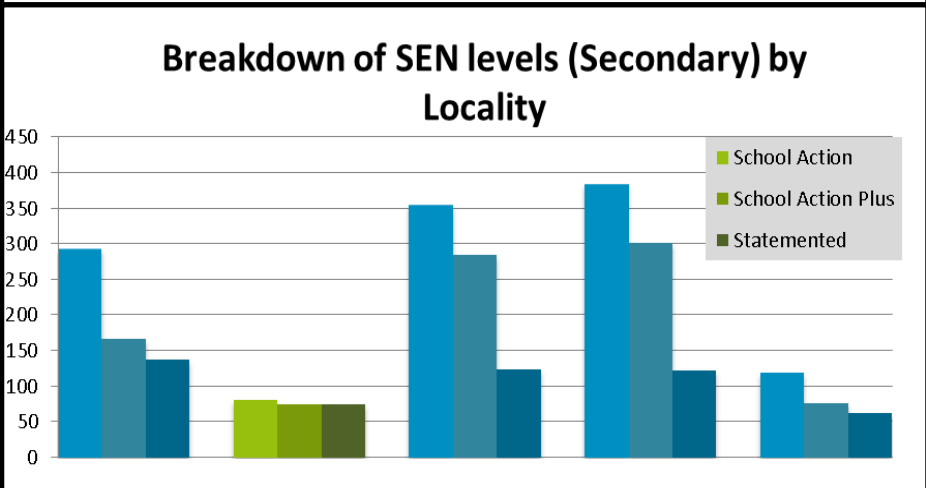
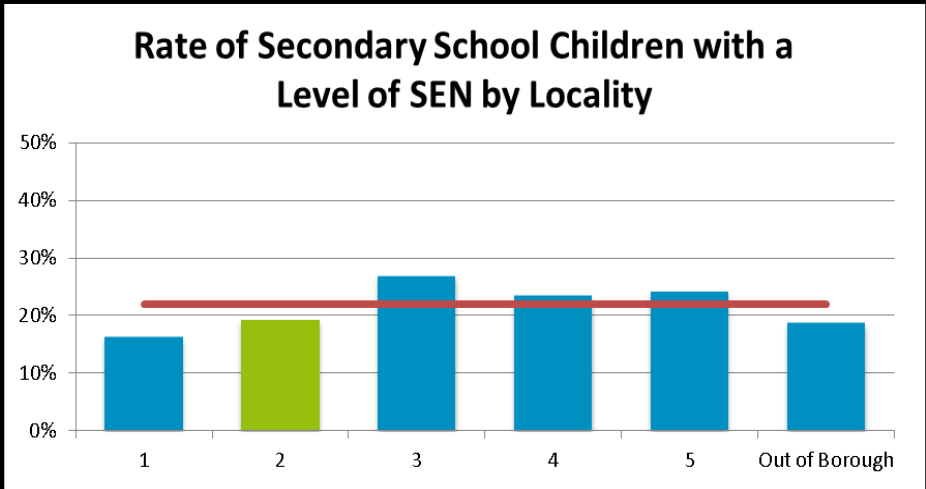
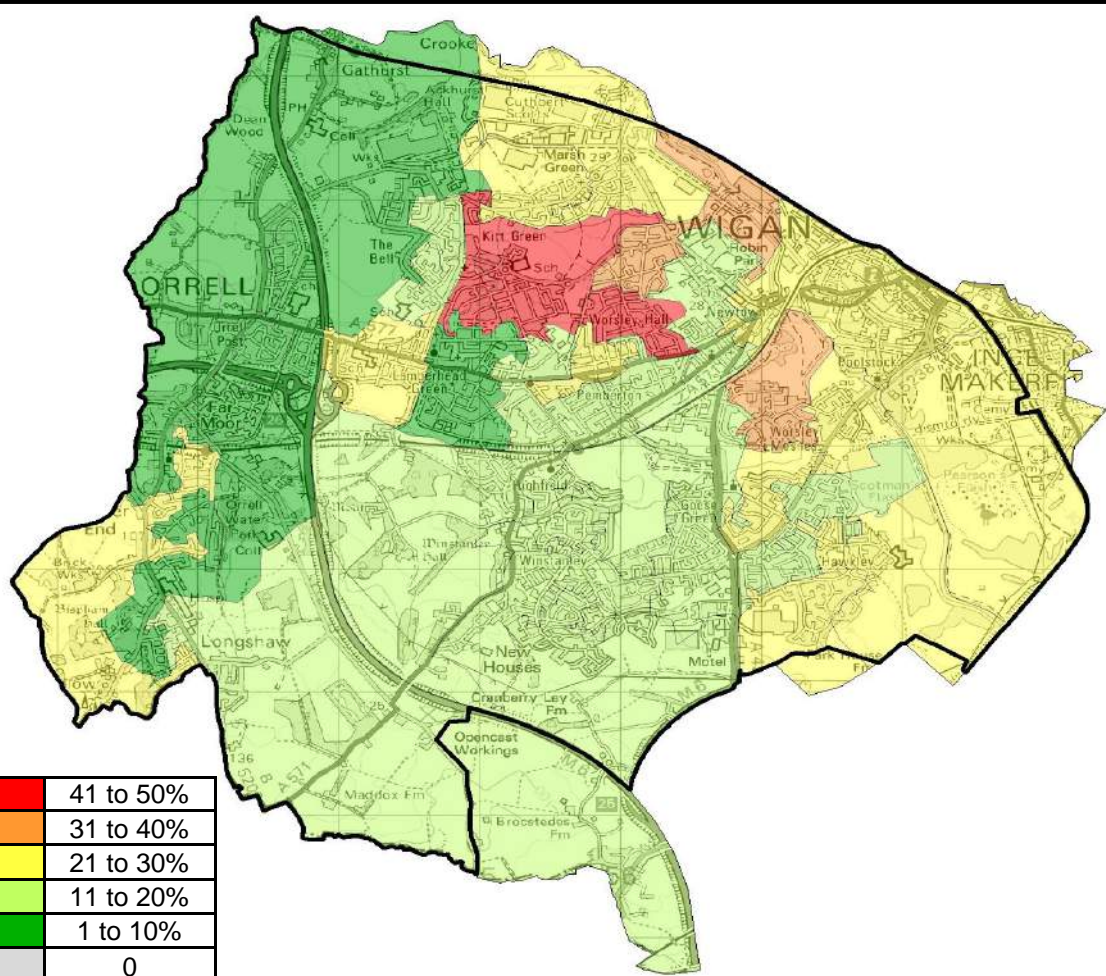
Overview

Locality 2 has the lowest overall rate of children with a level of SEN within all of the localities with a rate of 18%. Lower Ince has the highest concentration of children with a level of SEN within the locality.

The borough average is 20% per locality.

Locality Rank: 5th
Highest Concentration: Lower Ince

Children with a Level of SEN (Secondary)



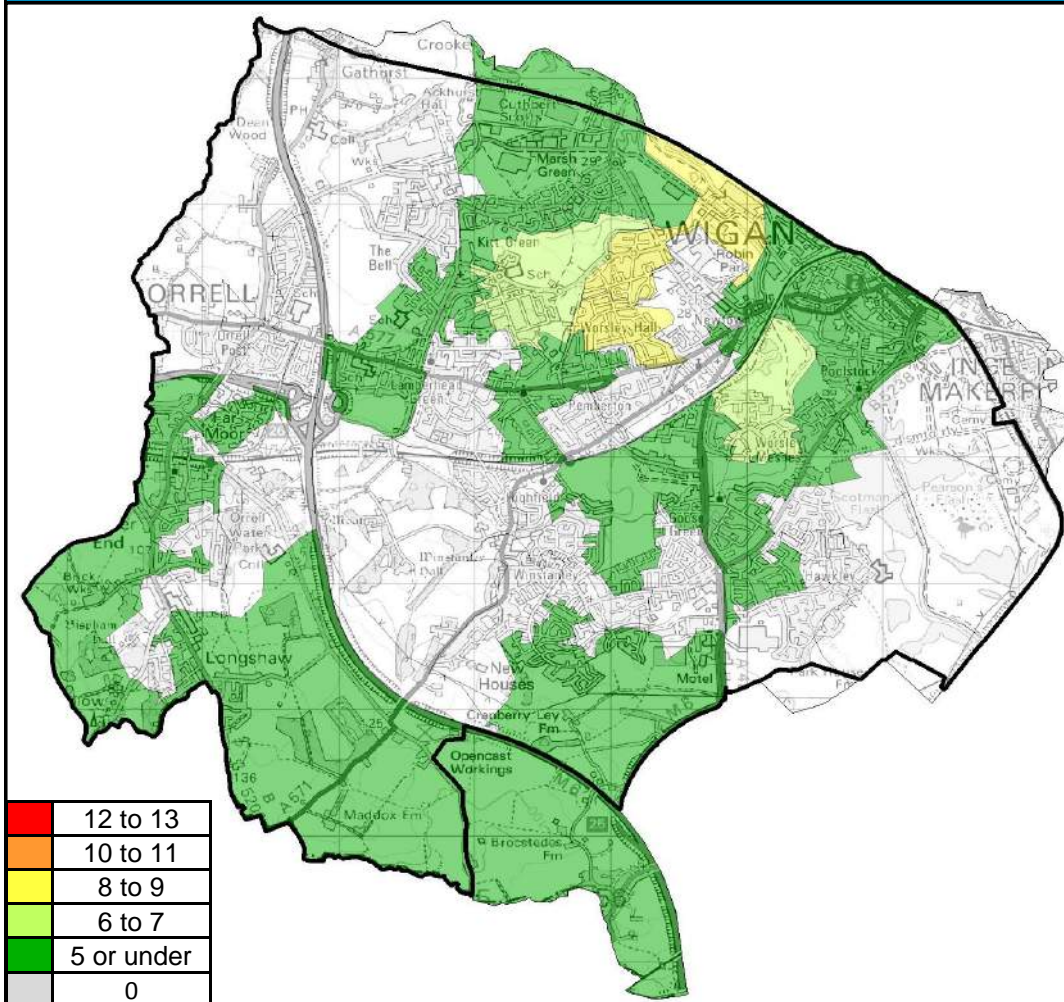
Overview Locality 2 has the second lowest overall rate of children with a level of SEN (secondary) within all of the localities with a rate of 19%. Norley East has the highest concentration of children with a level of SEN within the locality.

The borough average rate is 22% across all localities.

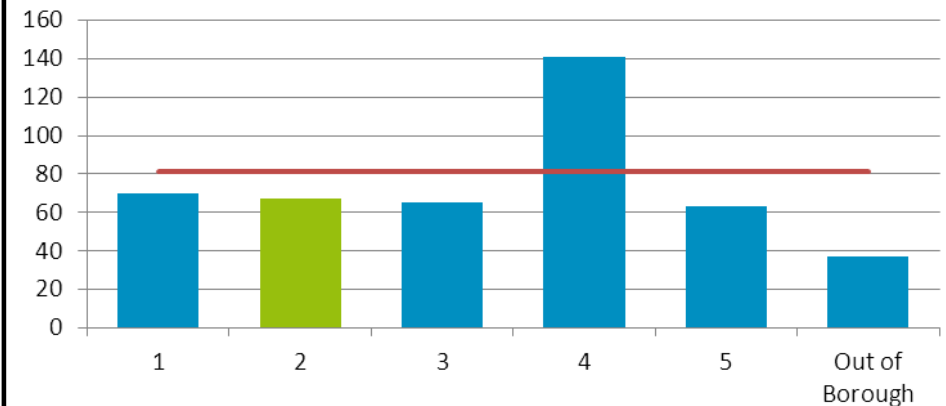
Locality Rank: 4th

Highest Concentration: Norley East

Children with 15%+ Unauthorised Attendance



Number of Children with 15%+ Unauthorised Absence by Locality



Overview

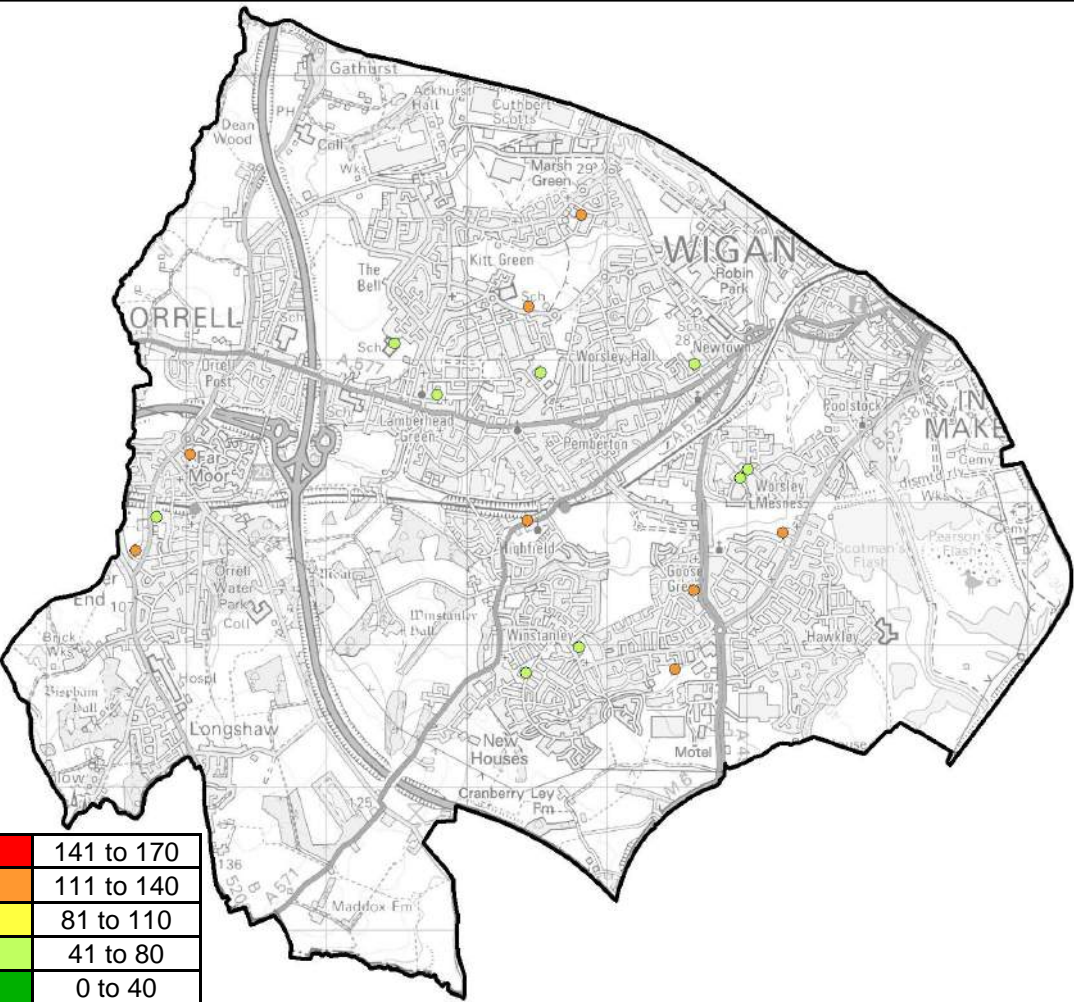
Locality 2 has the third highest number of children who have a high rate of unauthorised absence but figures are comparable amongst localities 1, 2, 3 and 5.

The average number of children with 15%+ unauthorised absence is 81 across all localities.

Locality Rank: 3rd

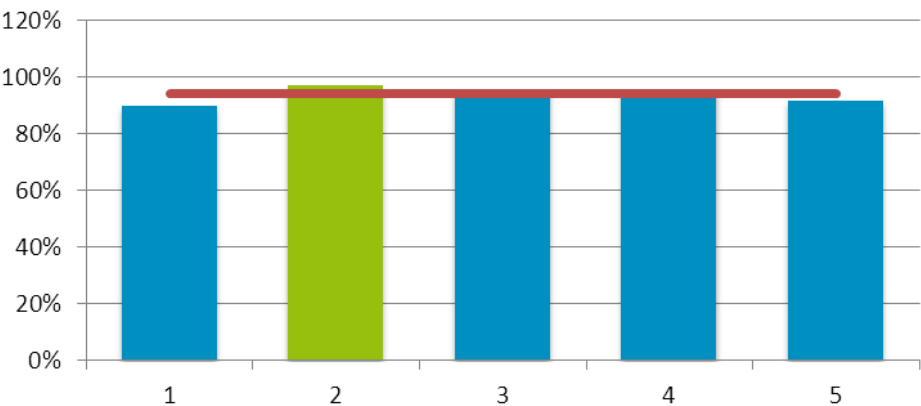
Highest Concentration: Worsley Hall North

Demand for School Places (Primary)



Locality Rank: 1st

Number of 1st Preferences by Available Places in Localities



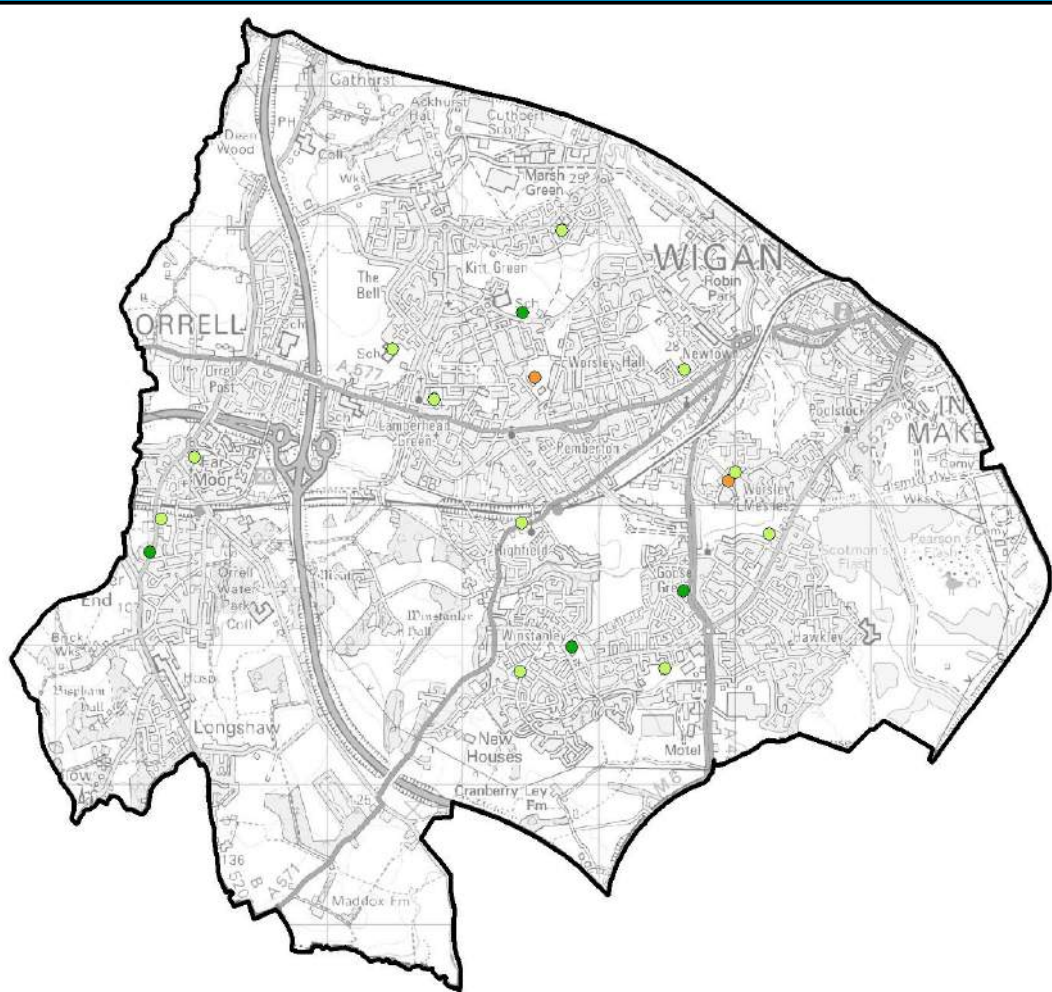
Overview

Locality 2 has the highest rate of demand for primary school places of all Wigan borough's localities.

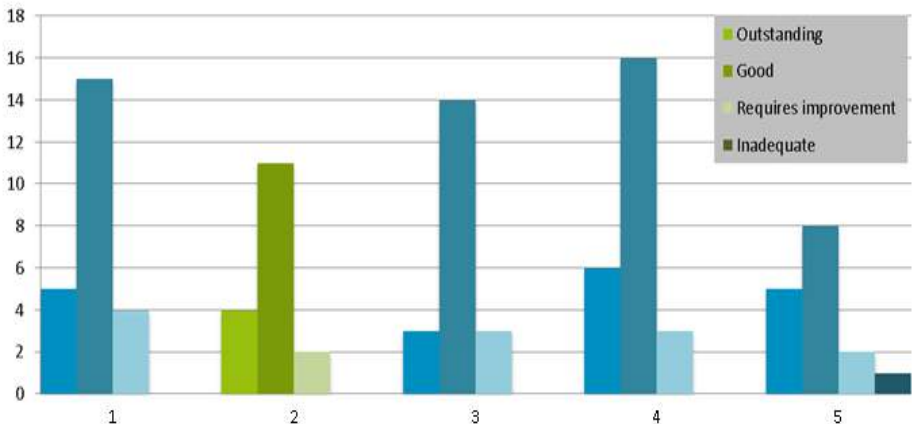
All schools have over 50% first preferences compared to available places, the lowest is St. Jude's Catholic Primary School with 57%.

Eight schools have over 100% first preferences compared to available places. Marus Bridge has the largest percentage with 124%.

School Ofsted Ratings (Primary)



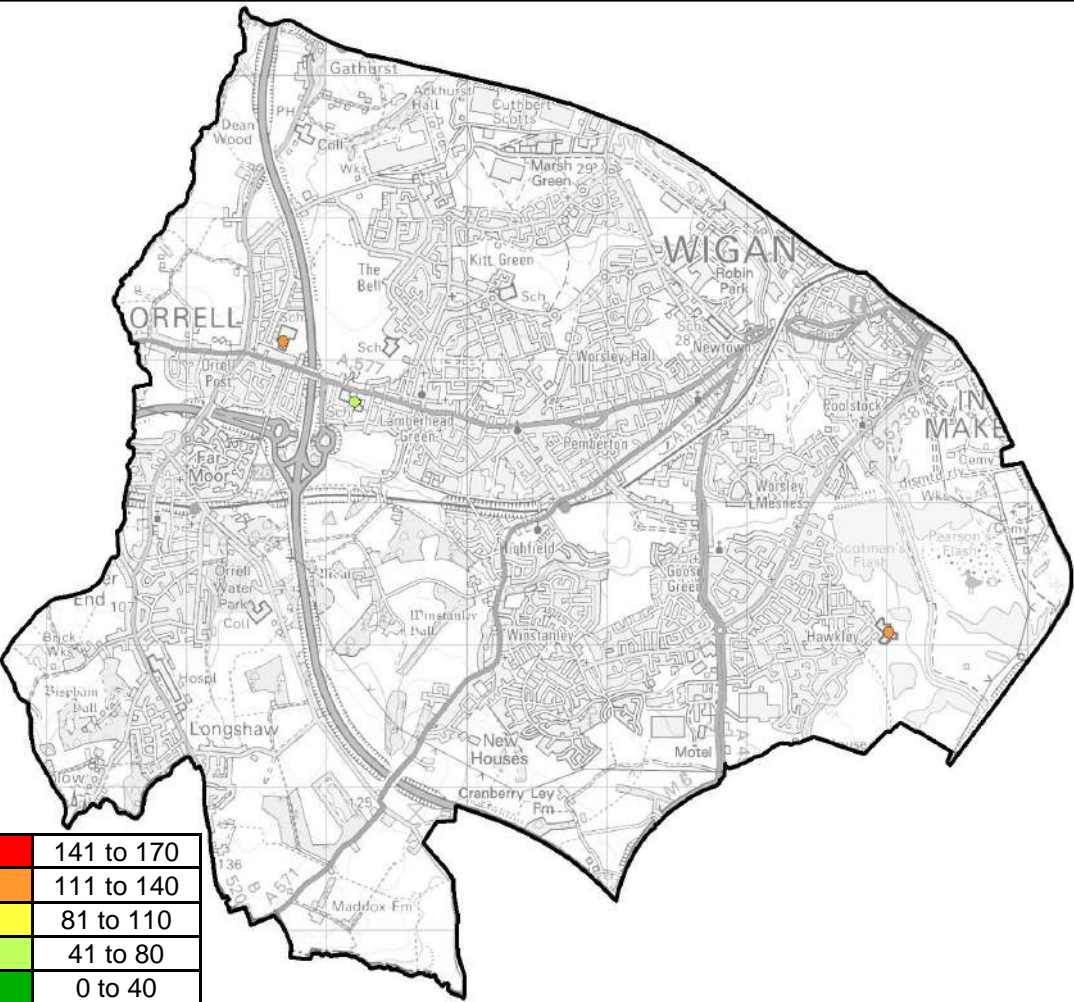
Breakdown of Primary School OFSTED Ratings by Locality



Overview

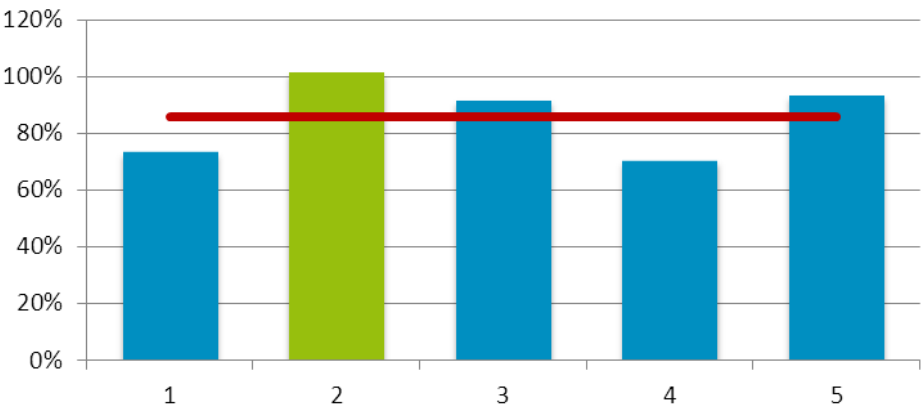
Locality 2 has 15 (88%) schools rated by Ofsted as good or outstanding, 2 requiring improvement and no schools rated as inadequate.

Demand for School Places (Secondary)



Locality Rank: 1st

Number of 1st Preferences by Available Places in Localities



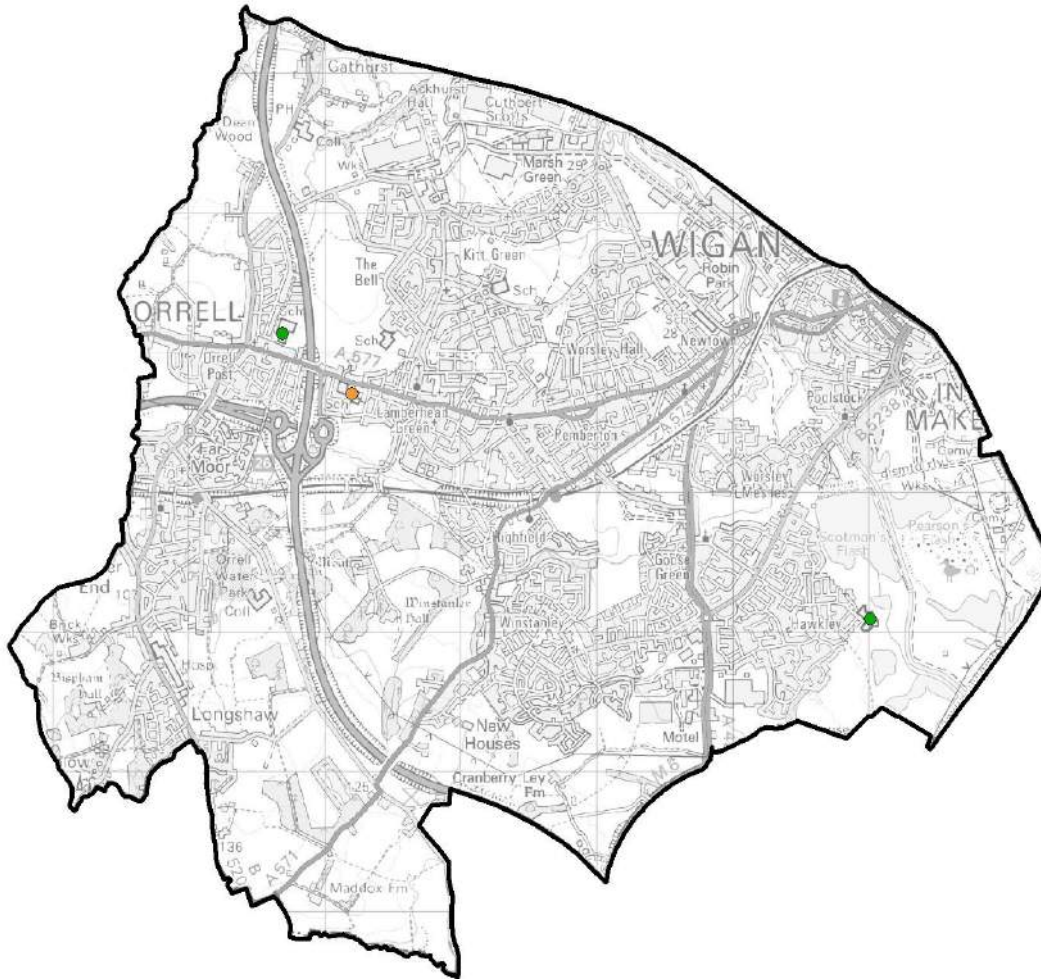
Overview

Locality 2 has the highest rate of demand for secondary school places of all Wigan borough's localities.

Between Locality 2's three secondary schools, there are 585 admission places available with 592 children having one of the schools as their first choice, a rate of 101%.

Hawkey Hall High School has the highest rate with 120% while Abraham Guest Academy has the lowest with 80%.

School Ofsted Ratings (Secondary)



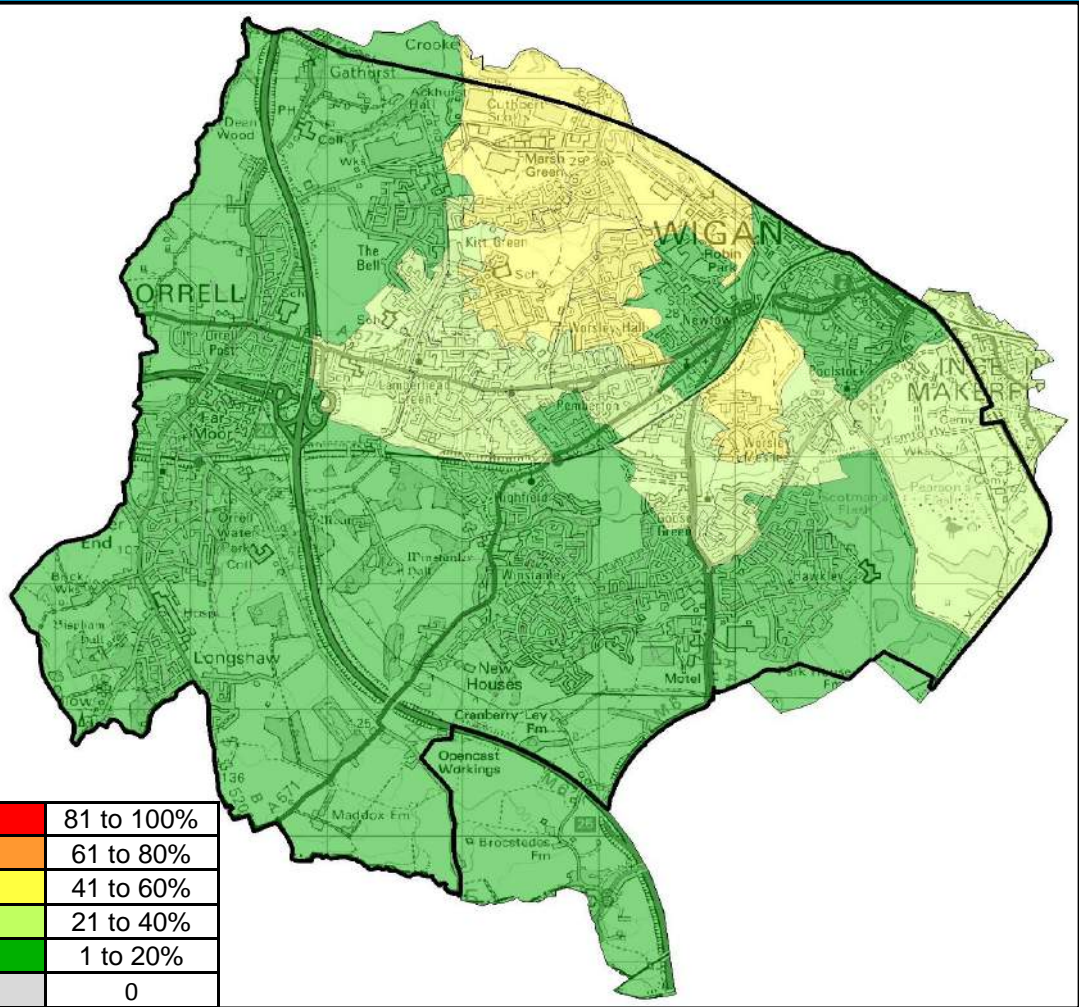
	Outstanding	Good	Requires Improvement	Inadequate	Total
Locality 1		4	1		5
Locality 2	2		1		3
Locality 3		3	1		4
Locality 4		3	1		4
Locality 5	2				2
Grand Total	4	10	4		18

Overview

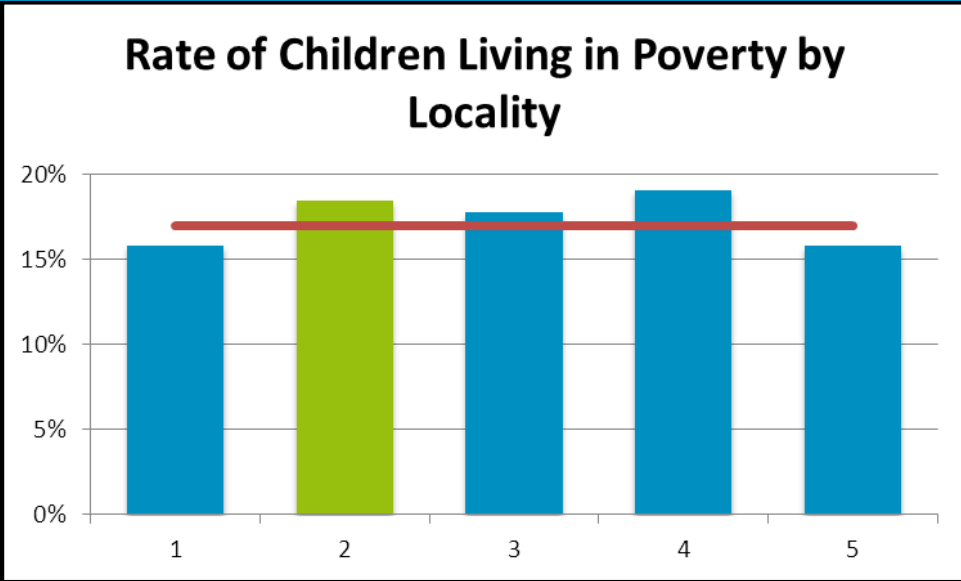
Locality 2 has two schools rated by Ofsted as Outstanding and one school that requires improvement.

Hawkey Hall High School and St Peters Catholic High School are rated as outstanding and Abraham Guest Academy is need of improvement.

Children Living in Poverty



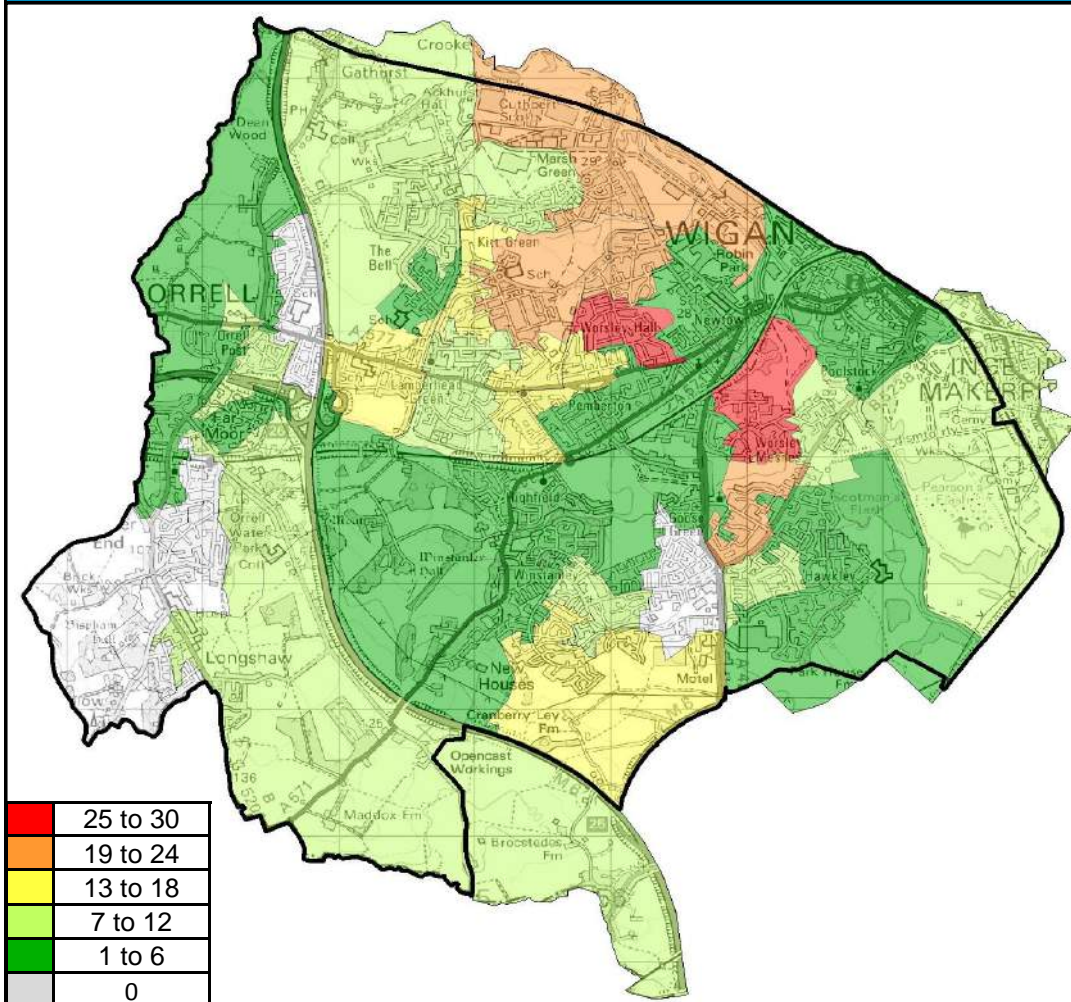
Locality Rank: 2nd
Highest Concentration: Norley East



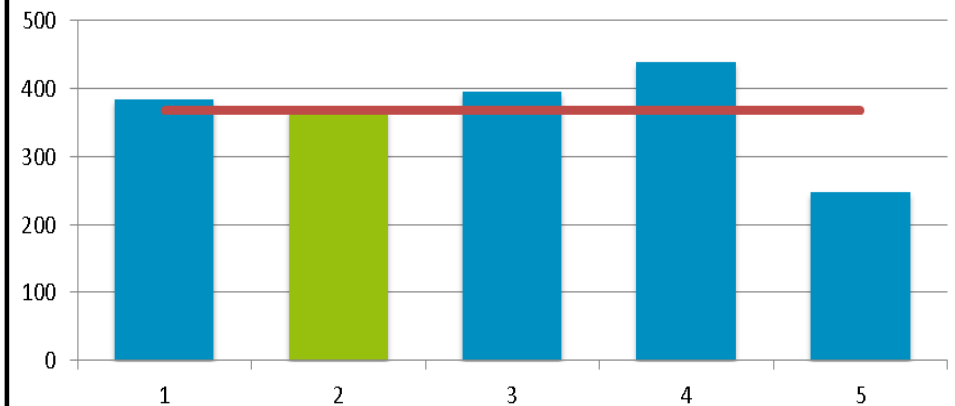
Overview

Locality 2 has the second highest rate of children living in poverty with 18%. The highest concentration within locality 2 is Norley East with 56%.
The average across all localities is 17%.

Children 0-16 Claiming DLA



Number of Children Aged 0-16 Claiming DLA by Locality



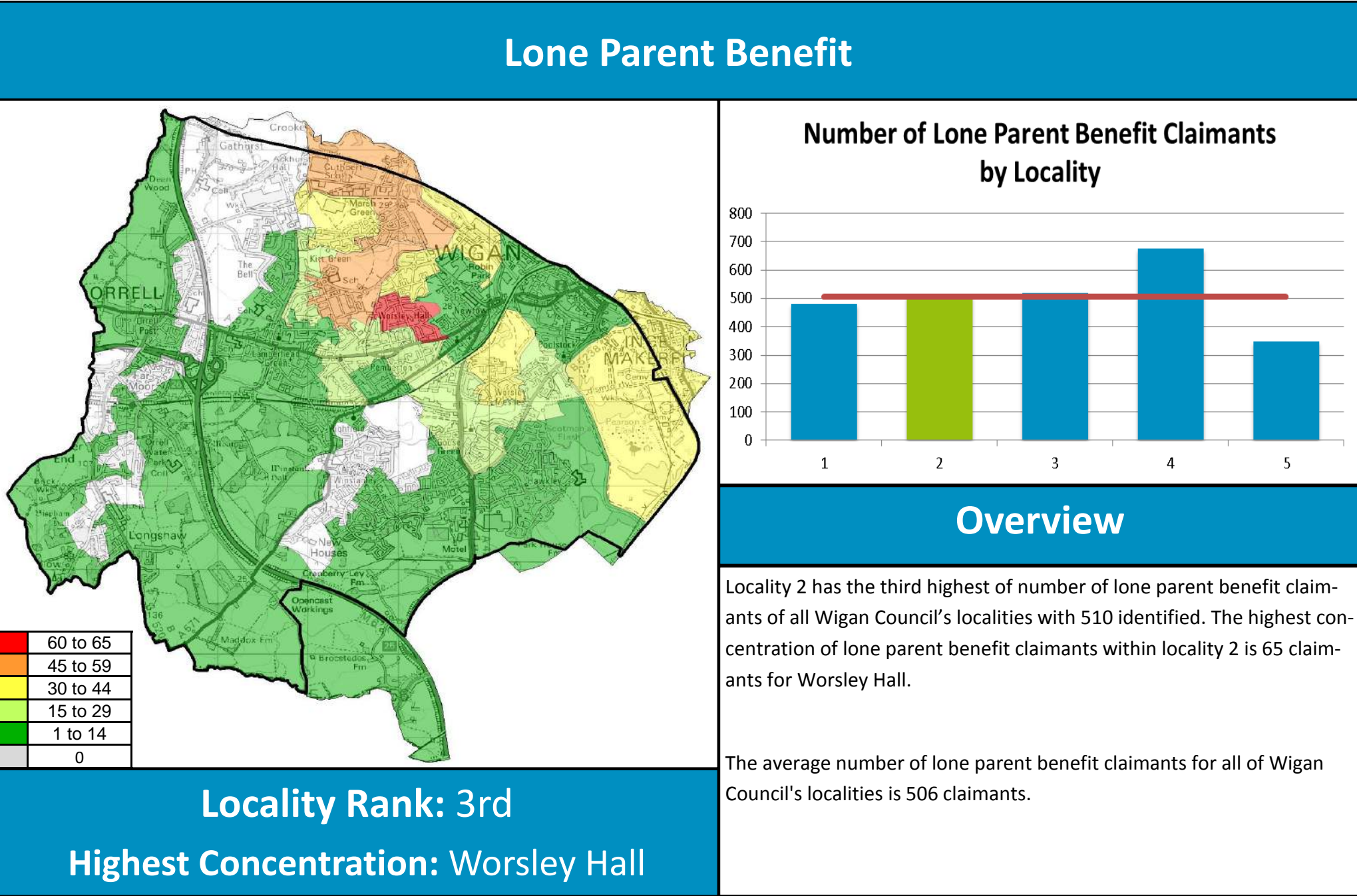
Overview

Locality 2 has the second lowest number of Children Aged 0-16 Claiming DLA of all Wigan Council's localities with 370 identified. The highest concentration of Children Aged 0-16 Claiming DLA is within the locality Worsley Hall.

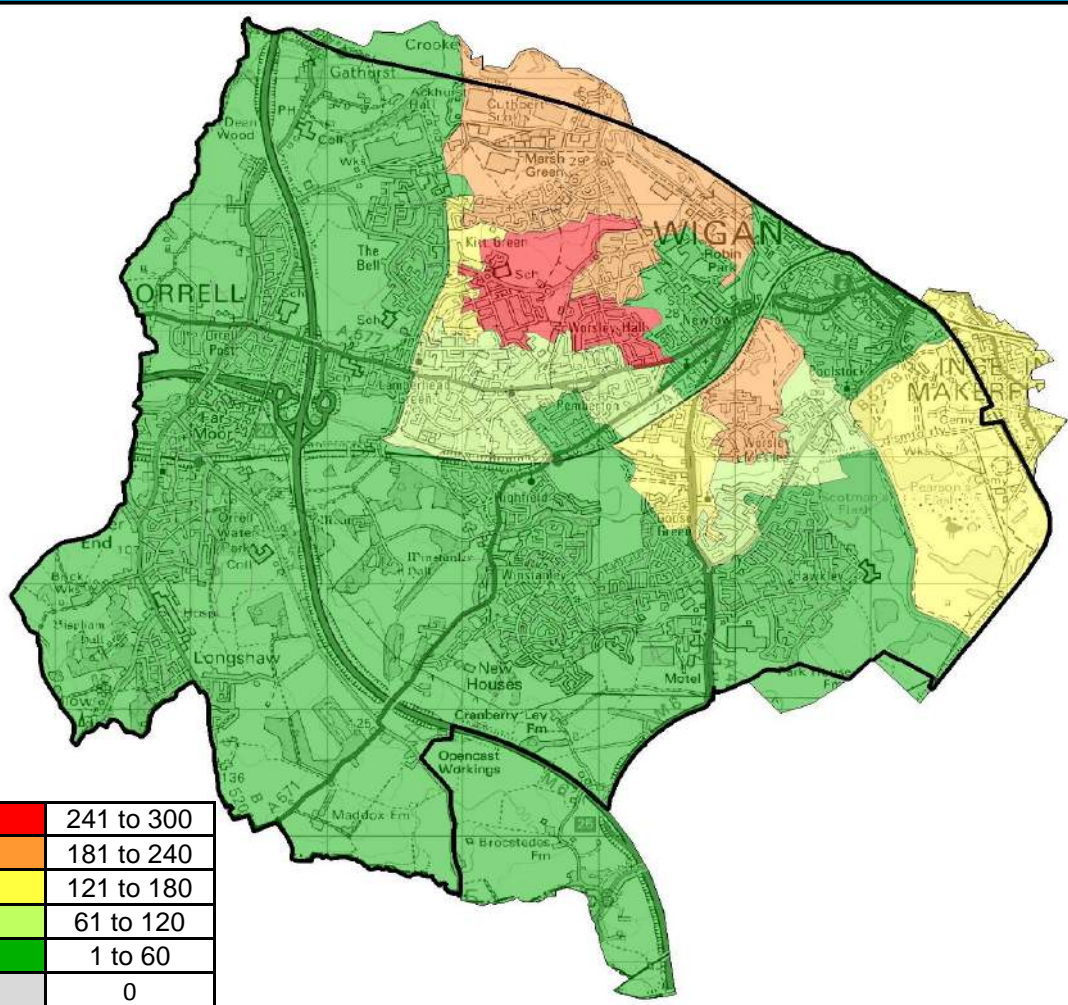
The average number of Children Aged 0-16 Claiming DLA of all Wigan Council's localities is 368.

Locality Rank: 4th

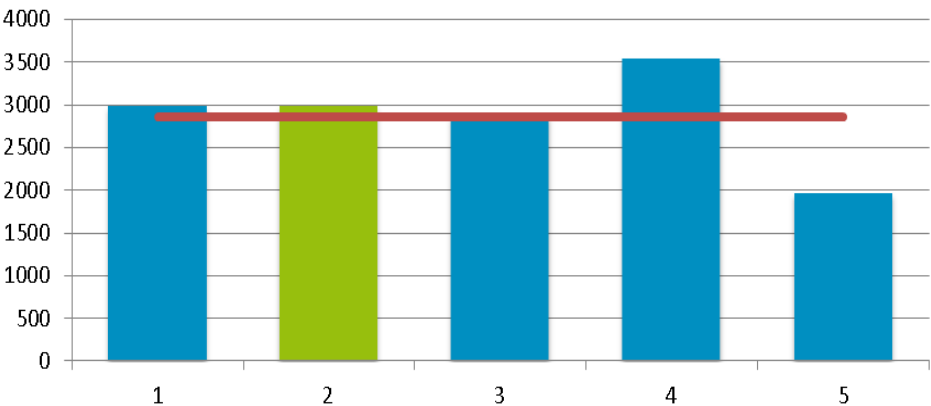
Highest Concentration: Worsley Hall



Children Living in Out of Work Benefit Households



Number of Children Living in Out of Work Benefit Households by Locality



Overview

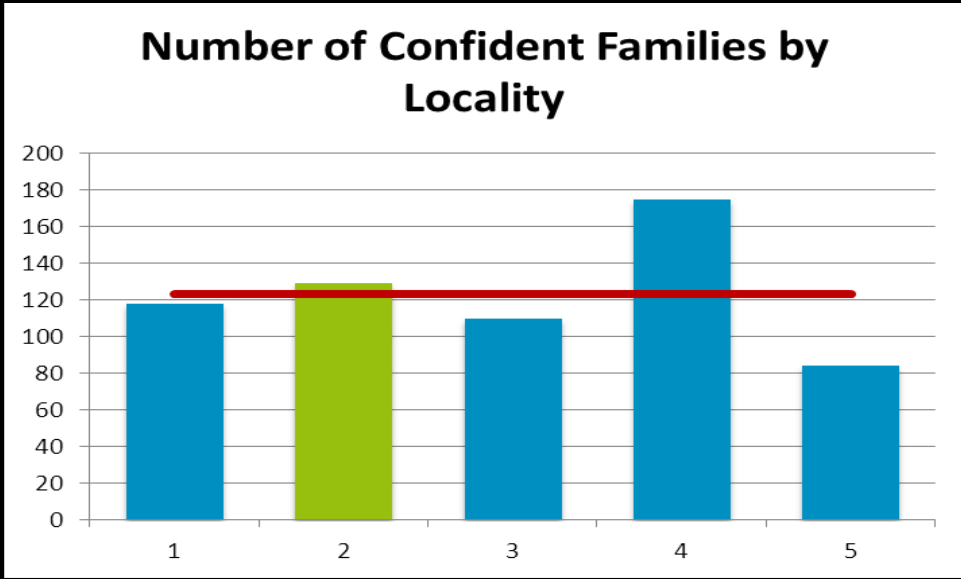
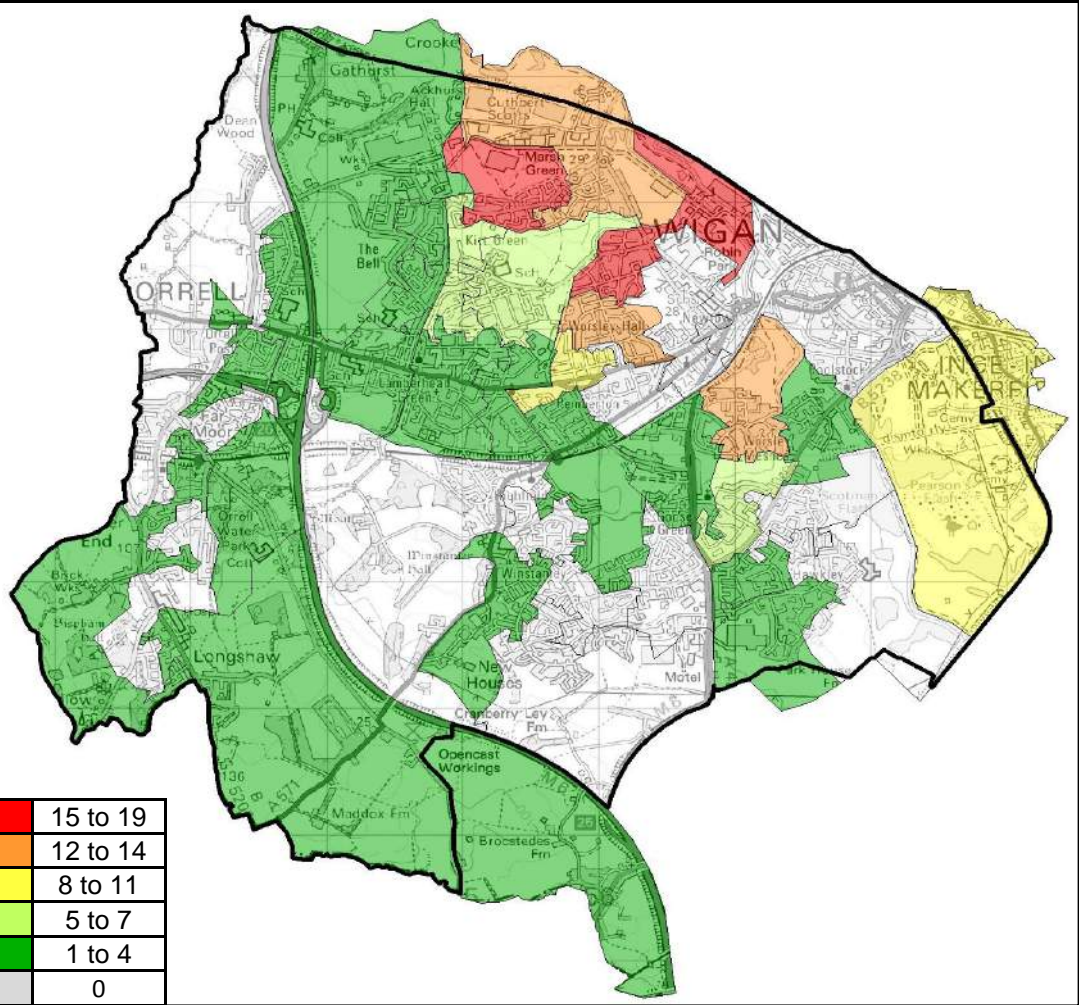
Locality 2 has the joint second most children living in out of work benefit households with 2980.

Worsley Hall and Norley East have in excess of 241 children that live in out of work benefit households

The locality average is 2864.

Locality Rank: 2nd*
Highest Concentration: Worsley Hall

Confident Families



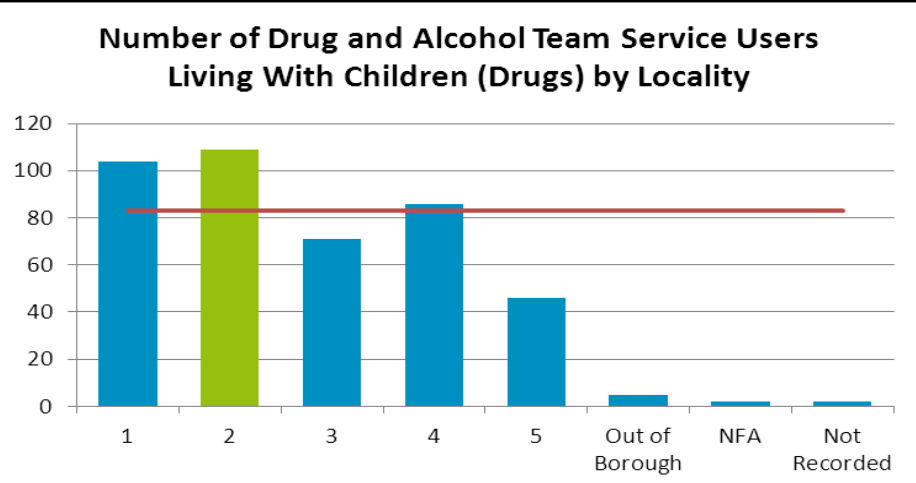
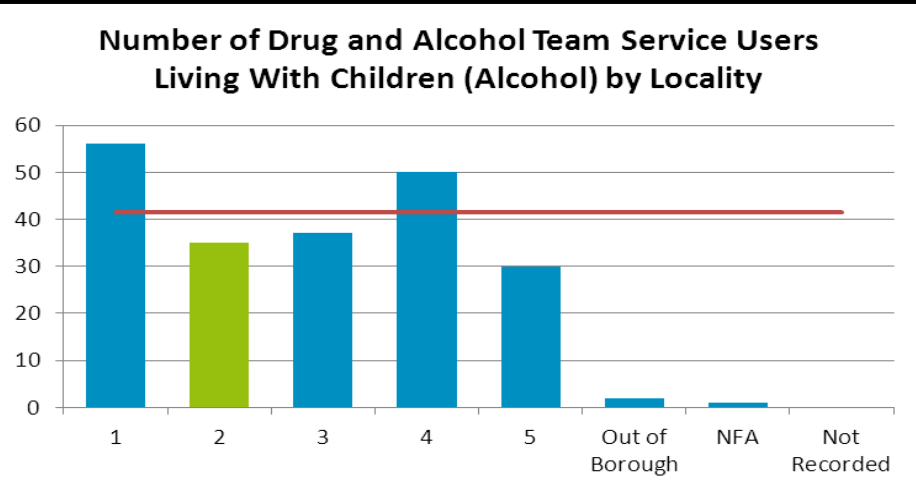
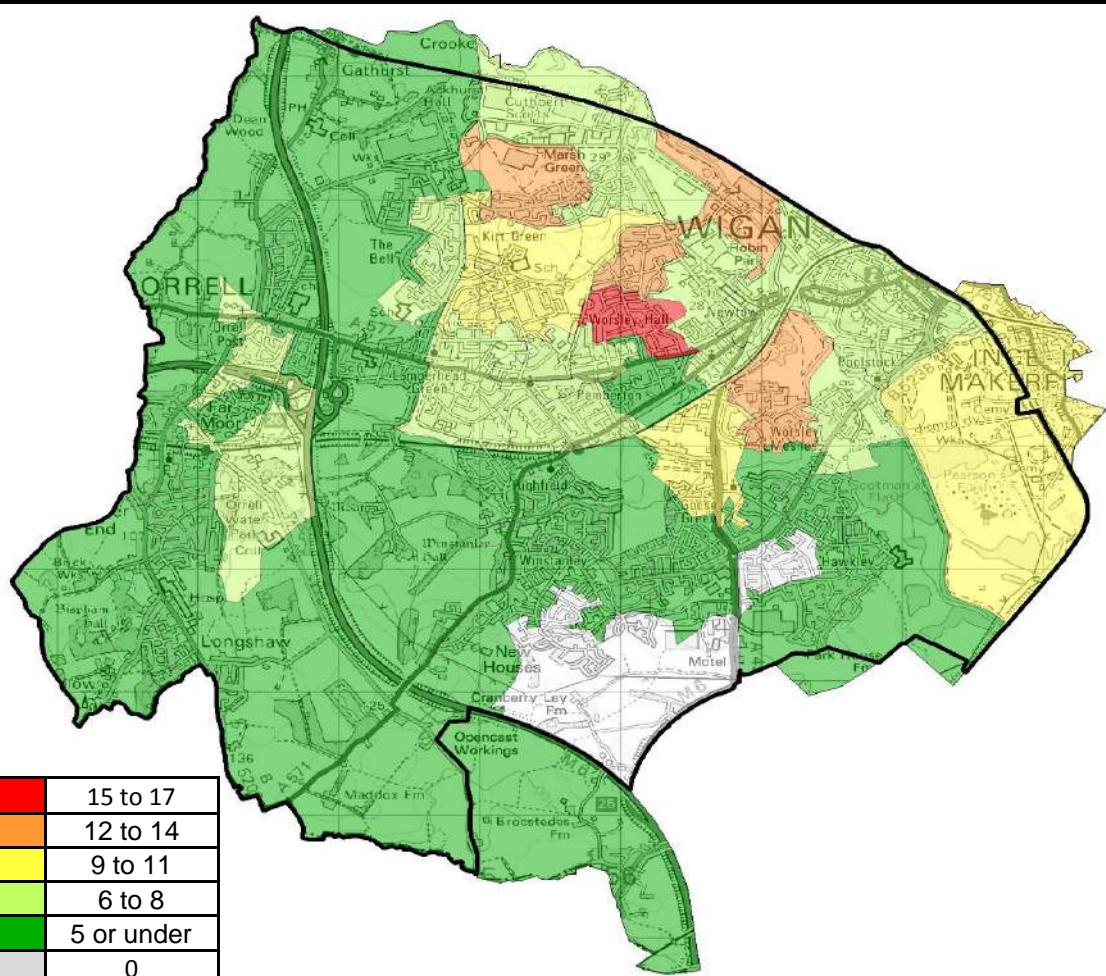
Overview

Locality 2 has the second highest number of identified confident families of all Wigan Council's localities with 129 identified.

However, there are areas which have a large number of identified confident families. Marsh Green West has 19 confident families identified, the highest in the borough.

Locality Rank: 2nd
Highest Concentration: Marsh Green West

Drug and Alcohol Service Users



Overview Locality 2 has 2nd highest overall number of drug and alcohol service team users who live with children of all Wigan Borough’s 5 localities.

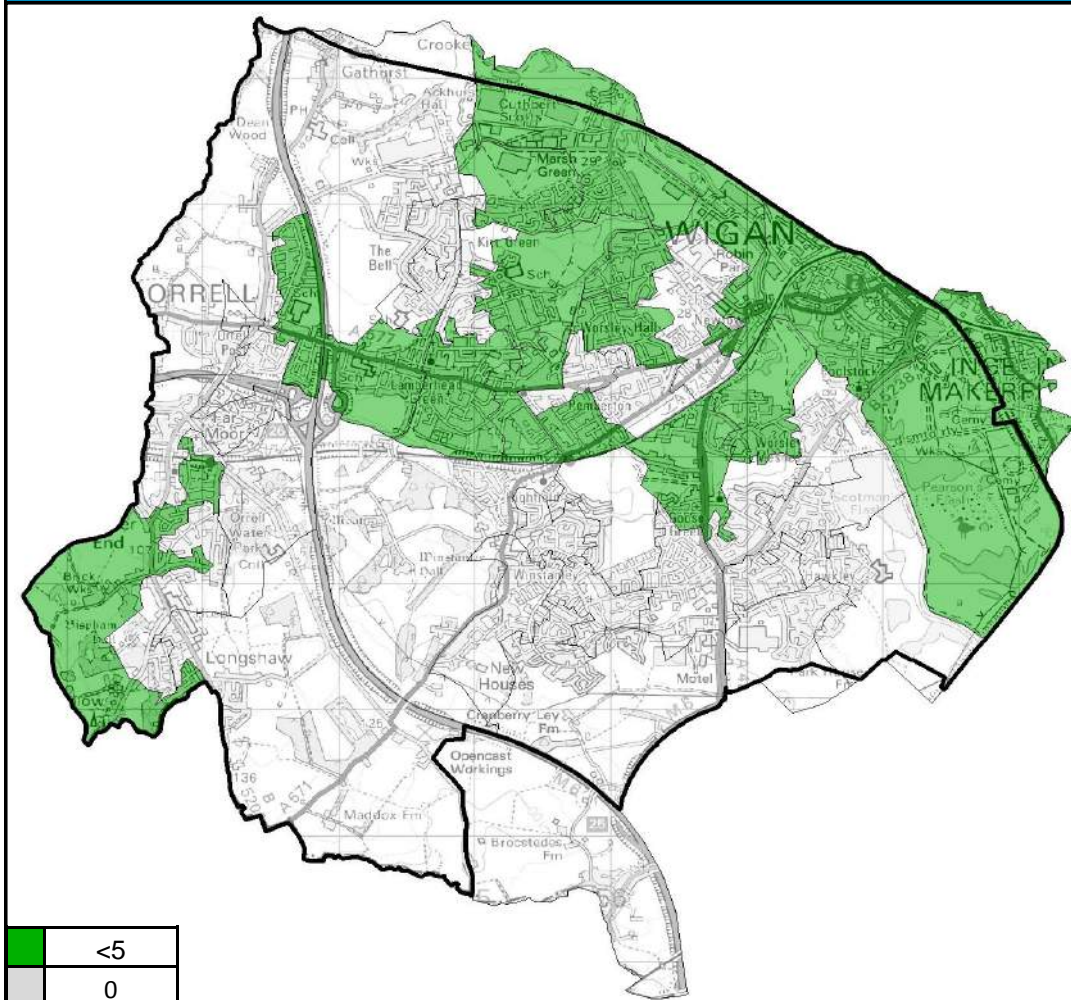
Locality 2 has the highest number of service users for drugs and the 4th highest number of users for alcohol.

Norley East has the highest number of Drug and Alcohol Team Service users in locality 2.

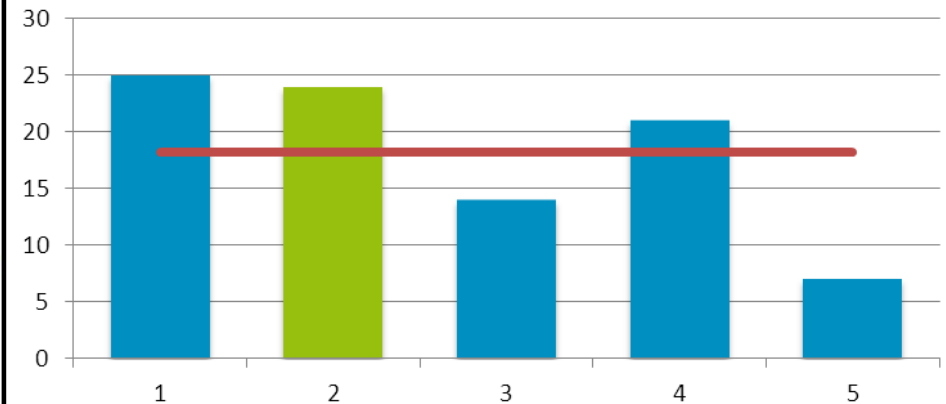
Locality Rank: 2nd

Highest Concentration: Worsley Hall

Entrants to the Youth Justice System



Entrants to Youth Justice System by Locality



Overview

Locality 2 had the second highest number of entrants to the youth justice system with 24 entrants in 2013, marginally lower than Locality 1 with 25.

The borough average is 18 per locality.

Locality Rank: 2nd

Highest Concentration: Marsh Green East / Worsley Hall

Matrix

		CAF assessments	Children Social Care	CPP	Gateway referrals	Looked after children	A & E attendance	Alcohol specific hospital stay	Child obesity (Reception)	Child obesity (Year 6)	Children with long term condition	Non elective admissions for intentional- al/unintentional injury	Non elective admissions for under 5's	Out patients appointments	GLD at EYFSP	Attainment level at KS2	Attainment level at KS4	Free school meals	NEET	SEN (Primary)	SEN (Secondary)	Unauthorised absence	BME	Child poverty	Children claiming DLA	Lone Parent Benefit	Out of work benefits	Confident Families	DAAT Users	Youth Justice System
LSOA Code	LSOA Name																													
E01006310	Lower Ince																													
E01006349	Poolstock																													
E01006350	Worsley Hall North																													
E01006351	Worsley Hall																													
E01006352	Newtown																													
E01006353	Tunstall Lane / Newtown																													
E01006354	Worsley Hall South																													
E01006355	Pemberton																													
E01006356	Norley West																													
E01006357	Norley East																													
E01006358	Worsley Green / Pemberton																													
E01006359	Pemberton / Rose Hill																													
E01006360	Marsh Green West																													
E01006361	Marsh Green East																													

Matrix

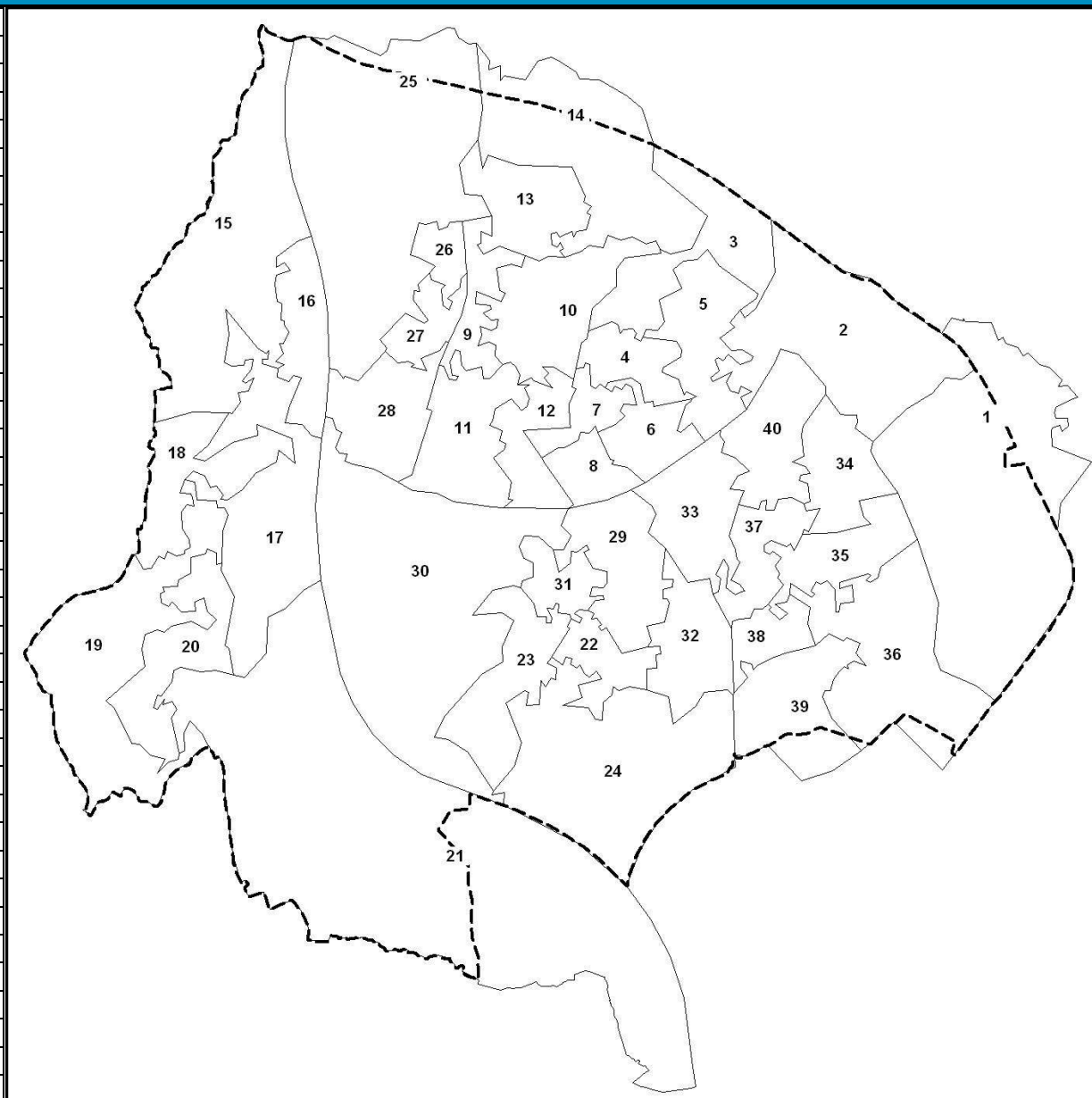
		Youth Justice System	DAAT Users	Confident Families	Out of work benefits	Lone Parent Benefit	Children claiming DLA	Child poverty	BME	Unauthorised absence	SEN (Secondary)	SEN (Primary)	NEET	Free school meals	Attainment level at KS4	Attainment level at KS2	GLD at EYFSP	Out patients appointments	Non elective admissions for under 5's	Non elective admissions for intentional/unintentional injury	Children with long term condition	Child obesity (Year 6)	Child obesity (Reception)	Alcohol specific hospital stay	A & E attendance	Looked after children	Gateway referrals	CPP	Children Social Care	CAF assessments
LSOA Code	LSOA Name																													
E01006362	Gathurst																													
E01006363	Broxton Avenue Estate																													
E01006364	Orrell Post																													
E01006365	Far Moor																													
E01006366	Far Moor / Higher End																													
E01006367	Greenslate / Billinge																													
E01006368	Longshaw / North Ashton																													
E01006393	Winstanley																													
E01006394	Winstanley West																													
E01006395	Winstanley / Hawkley Brook																													
E01006396	Kitt Green North																													
E01006397	Kitt Green																													
E01006398	The Bell																													

Matrix

LSOA Code	LSOA Name	CAF assessments	Children Social Care	CPP	Gateway referrals	Looked after children	A & E attendance	Alcohol specific hospital stay	Child obesity (Reception)	Child obesity (Year 6)	Children with long term condition	Non elective admissions for intention-	Non elective admissions for under 5's	Out patients appointments	GLD at EYFSP	Attainment level at KS2	Attainment level at KS4	Free school meals	NEET	SEN (Primary)	SEN (Secondary)	Unauthorised absence	BME	Child poverty	Children claiming DLA	Lone Parent Benefit	Out of work benefits	Confident Families	DAAT Users	Youth Justice System
E01006399	Lamberhead Green																													
E01006400	Goose Green																													
E01006401	Highfield																													
E01006402	Winstanley / Highfield																													
E01006403	Marus Bridge West																													
E01006404	Warrington Road / Goose Green																													
E01006405	Poolstock / Worsley Mesnes																													
E01006406	Hawkley North																													
E01006407	Hawkley																													
E01006408	Worsley Mesnes South																													
E01006409	Marus Bridge East																													
E01006410	Ben Johnson																													
E01006411	Worsley Mesnes North																													

Reference Map

	LSOA Name
1	Lower Ince
2	Poolstock
3	Worsley Hall North
4	Worsley Hall
5	Newtown
6	Tunstall Lane / Newtown
7	Worsley Hall South
8	Pemberton
9	Norley West
10	Norley East
11	Worsley Green / Pemberton
12	Pemberton / Rose Hill
13	Marsh Green West
14	Marsh Green East
15	Gathurst
16	Broxton Avenue Estate
17	Orrell Post
18	Far Moor
19	Far Moor / Higher End
20	Greenslate / Billinge
21	Longshaw / North Ashton
22	Winstanley
23	Winstanley West
24	Winstanley / Hawkley Brook
25	Kitt Green North
26	Kitt Green
27	The Bell
28	Lamberhead Green
29	Goose Green
30	Highfield
31	Winstanley / Highfield
32	Marus Bridge West
33	Warrington Road / Goose Green
34	Poolstock / Worsley Mesnes
35	Hawkley North
36	Hawkley
37	Worsley Mesnes South
38	Marus Bridge East
39	Ben Johnson
40	Worsley Mesnes North



Notes on Datasets

<u>Dataset</u>	<u>Timeframe</u>
Population	Mid-Year Estimates 2012
BME	2011
CAF Assessments	2013
Referrals to Children's Social Care	2013
Child Protection Plans	2013/14
Gateway Referrals	2013
Looked After Children	2013/14
A&E Attendances for Under 5s	2013/14
Alcohol Specific Hospital Stays for Under 18s	2013/14
Child Obesity	2011/12
Non-Elective Admissions of Children with a Long-Term Condition	2013/14
Non-Elective Admissions for Under 5s	2013/14
Non-Elective Activity for Intentional and Unintentional Injuries	2013/14
Outpatient Appointments for Under 5s	2013/14
EYFS, KS2 & KS4 Attainment Data	2012/13
Eligibility for Free School Meals	As at January 2014
NEET	As at December 2013
Children with a level of SEN	As at January 2014
Children with 15%+ Unauthorised absence	2012/13
Demand for School Places	2012/13
School Ofsted Ratings	As at May 2014
Children Living in Poverty	2011
Children Claiming DLA	As at August 2013
Lone Parent Benefit	As at August 2013
Children Living in Out of Work Benefit Households	As at August 2013
Confident Families	As at January 2014
Drug and Alcohol Service Users	As at September 2013
Entrants to the Youth Justice System	2013