

Locality Profiles

Locality 1- Standish, Shevington, Aspull and Wigan North

Children and Young People's Services

Joint Intelligence Unit

April 2014

Contents

	<u>Page</u>
Overview	3
Population	4
Social Care	7
Hospital Activity	12
Education	20
Benefits	32
Confident Families, DAAT & Crime	36
Matrix	39
LSOA Key	42
Notes on Datasets	43

Overview

Situated in the north of the Borough, Locality 1 has a general population of 71,434 of which 15,474 (21.7%) are 18 or younger.

There are some trends in the data. Beech Hill West has the highest number of identified confident families in the locality. To be identified as a confident family, a family must meet two of a number of criteria which include claiming benefits, committing crimes, involvements with social care and children's unauthorised absence at school. In line with the identification criteria, Beech Hill West has the highest number of children with high unauthorised absence, the highest number of referrals to children's social care and one of the highest concentrations of looked after children within the locality.

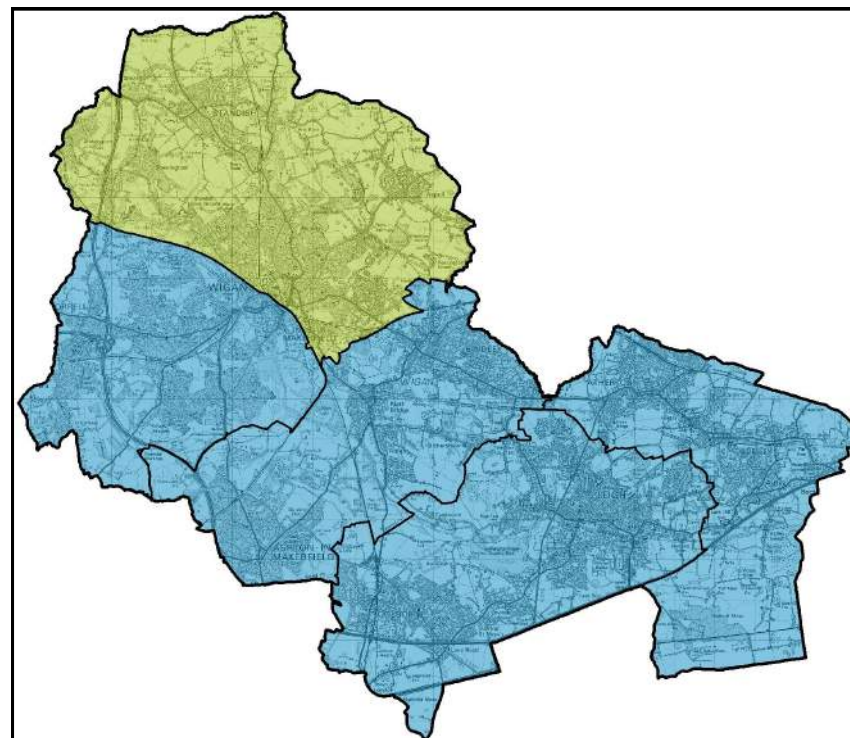
Elsewhere, Higher Ince has the highest number of users of the drugs and alcohol in the locality. Higher Ince also has the highest rate of child obesity in reception and the most number of children eligible for school meals.

Springfield/Wigan Town Centre had the highest number of entrants to the youth justice system in 2013 along with the highest number of 16-18 year olds not in employment, education or training (NEET).

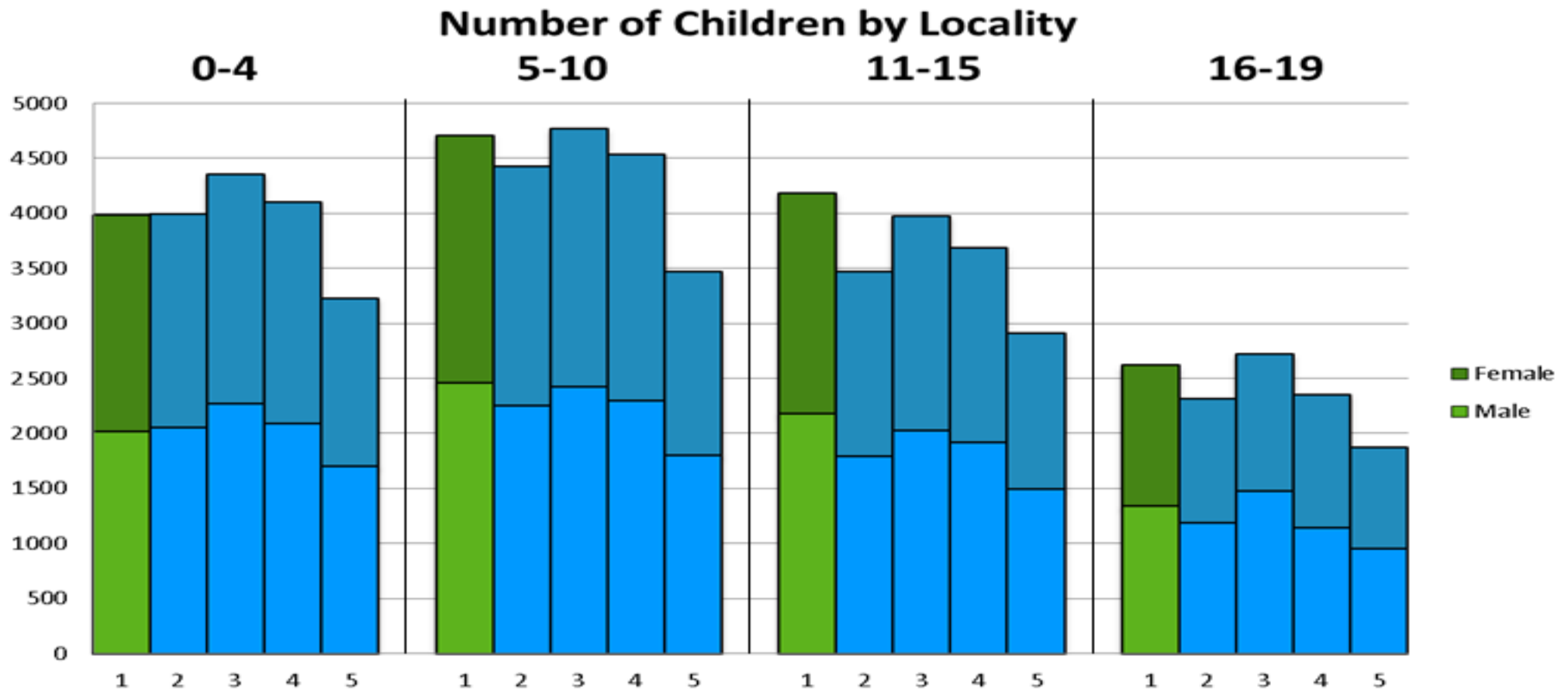
Marsh Green East, which is split between localities 1 and 2, has high concentrations in the benefit elements, including the highest figures for children living in poverty, claimants of lone parent benefit and children living in out of benefit households.

To gain a more general overview of each LSOA, consult the matrix on pages 39-41.

NB: A locality rank is given for each element. If a locality is ranked 1st, this would mean that the locality has the highest numbers of that element. A rank of 1st in Looked After Children would mean that that locality has the highest numbers of Looked After Children. Red lines on graphs indicate locality average. As some of the datasets contain low figures, any values under 5 (or under 10 for social care) have been suppressed to avoid identification of individuals.



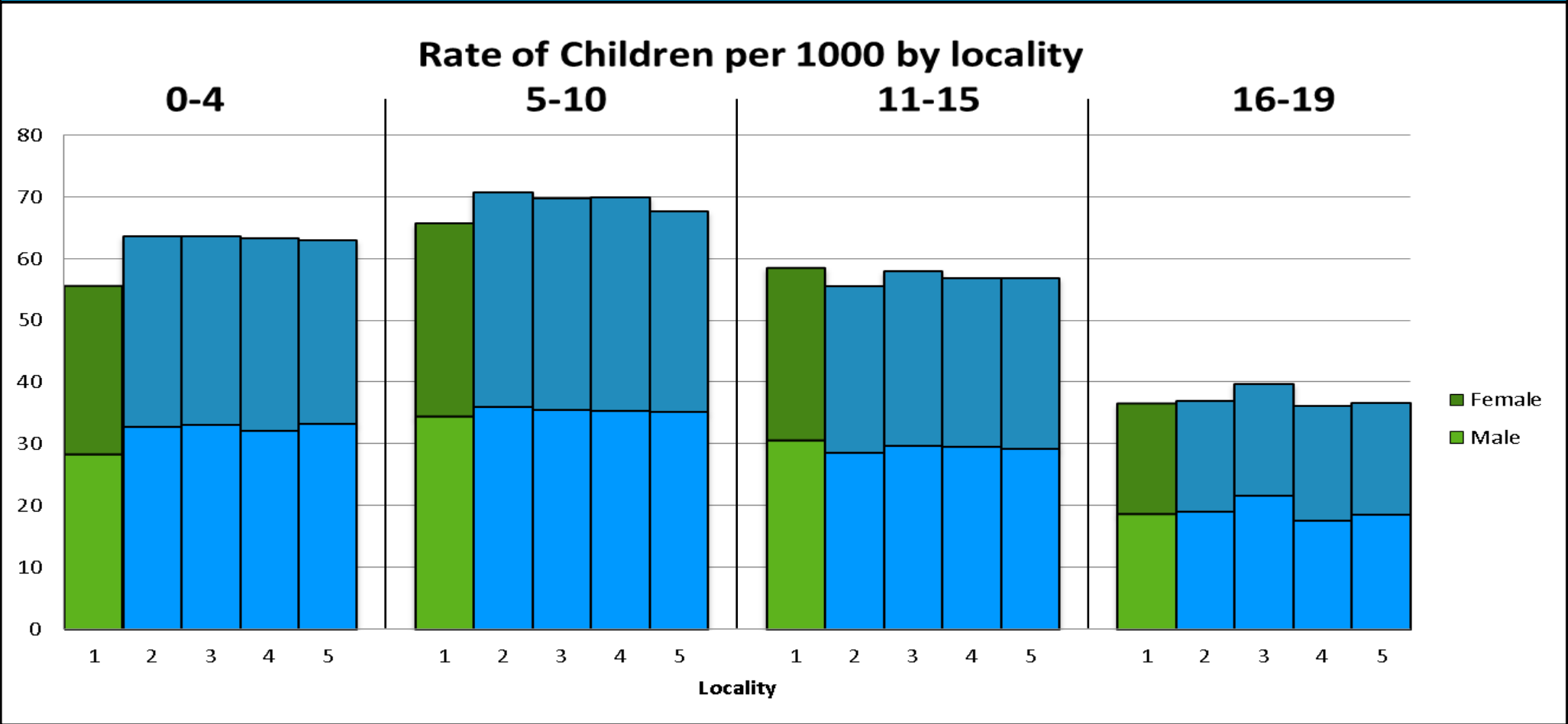
Population—Actual Figures



Overview

The number of children in locality 1 is similar to the other 4 localities, although there is a slightly larger number of children in the 11-15 category. The graph illustrates an even mix of males and females across all four age bands.

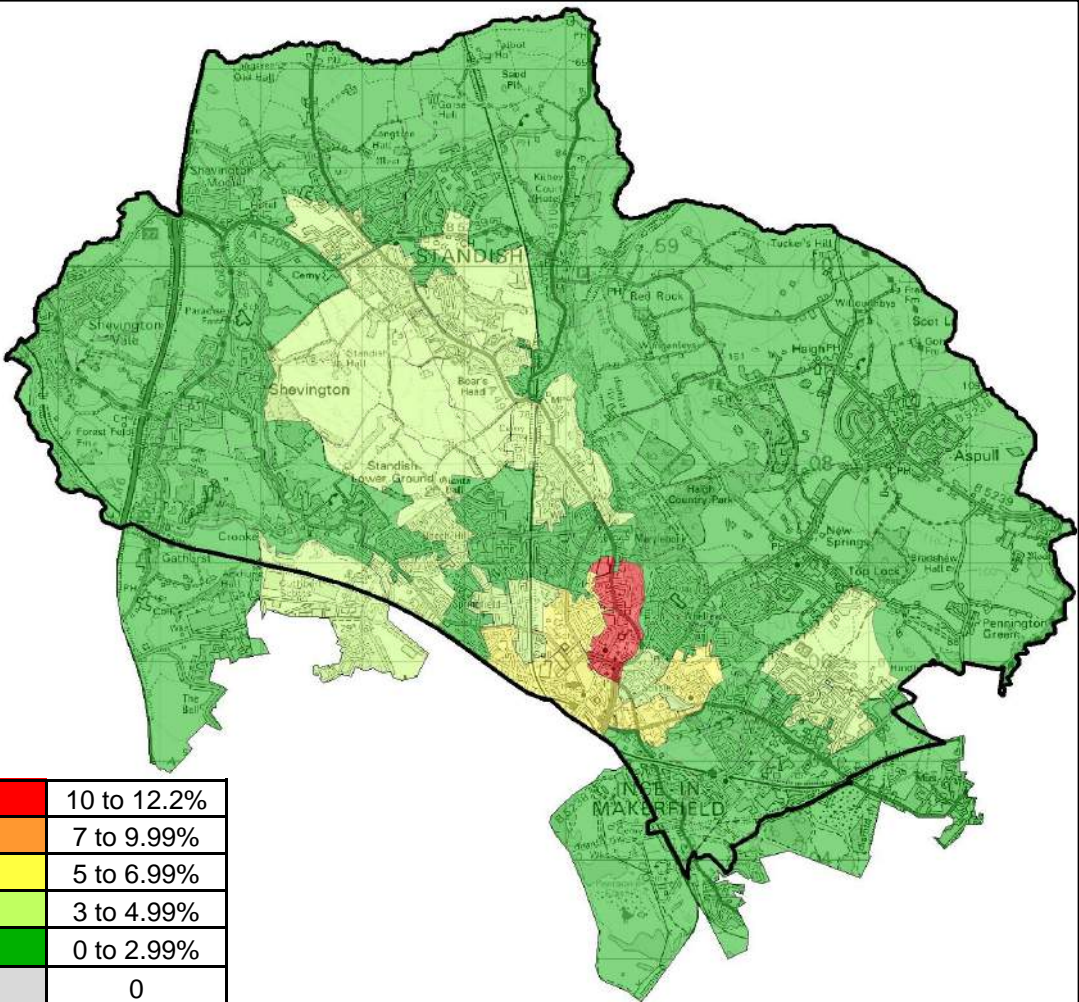
Population—Rates per 1000



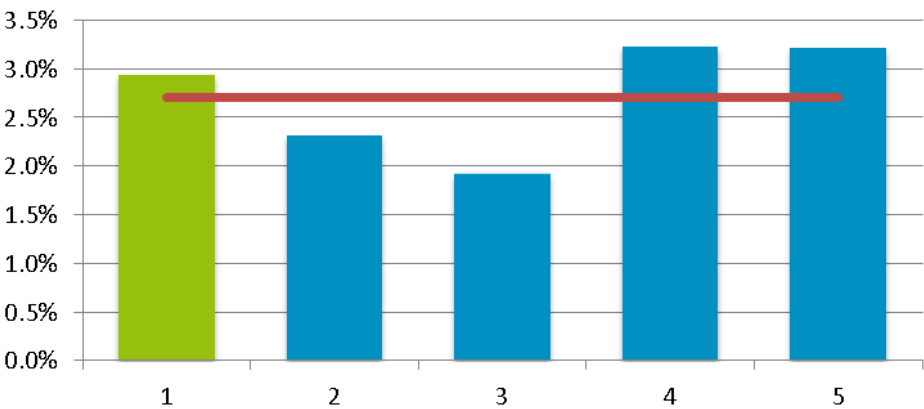
Overview

Locality 1 has a distinctly lower proportion of 0-4 year olds than the rest of the borough, all other rates are comparable among the 5 localities.

BME Breakdown



Rate of Non-White British in Population by Locality



Overview

Locality 1 has the third highest rate of Non-White British with 2.9% identified. Swinley East has the highest concentration rate of Non-White British within the locality with 12% identified.

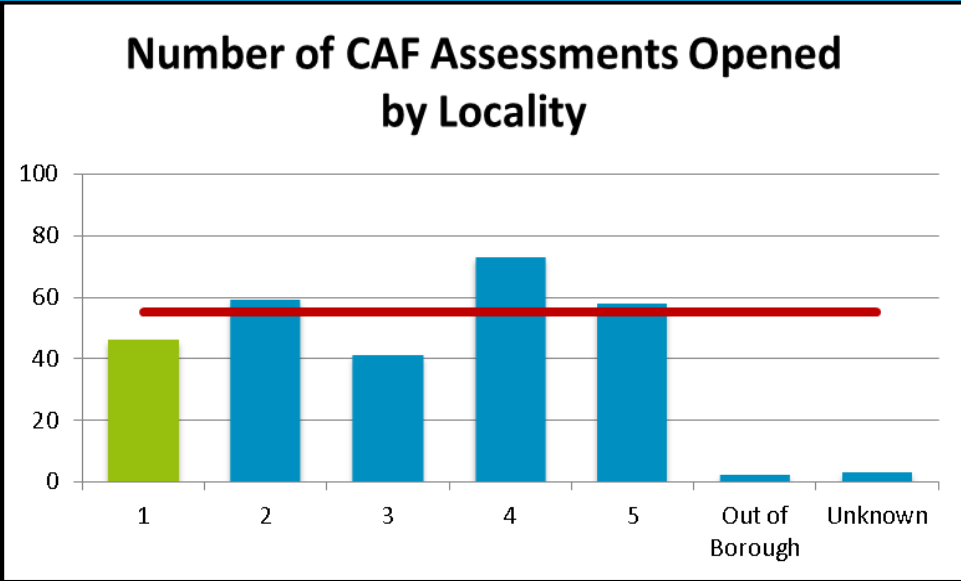
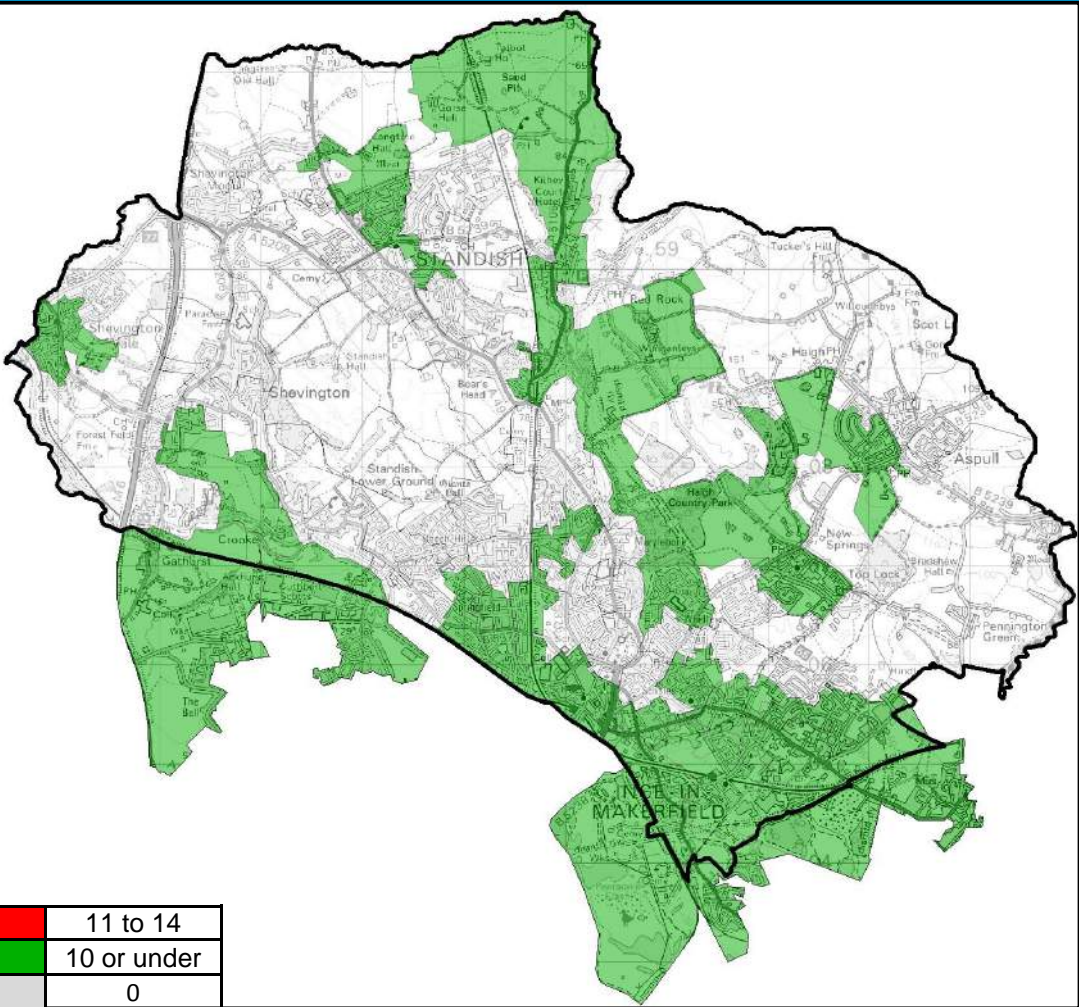
The average rate across all localities for Non-White British in population is 2.7%.

Wigan Council is in the first quartile for lowest rates of Non-White British when compared with statistical neighbours.

4th	3rd	2nd	1st
-----	-----	-----	-----

Locality Rank: 3rd
Highest Concentration: Swinley East

CAF Assessments (Opened)



Overview

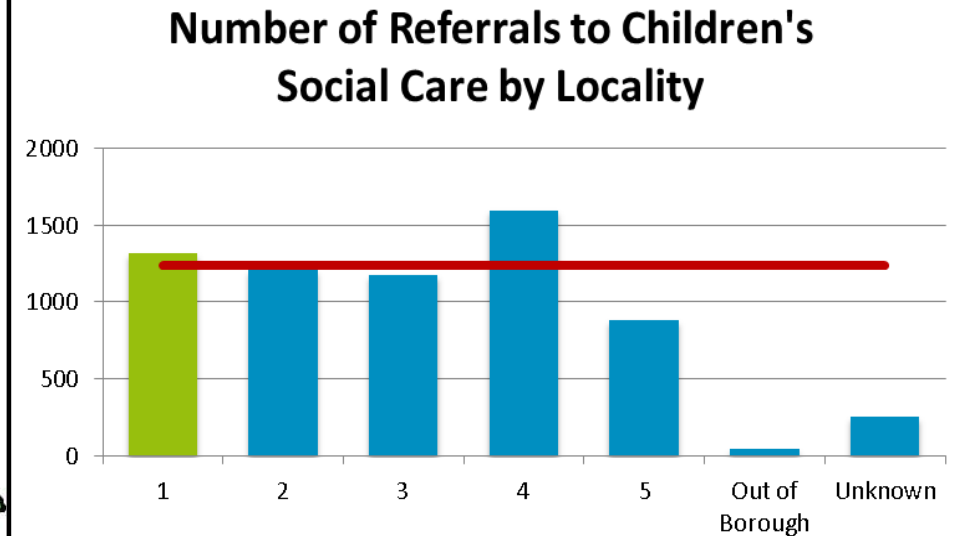
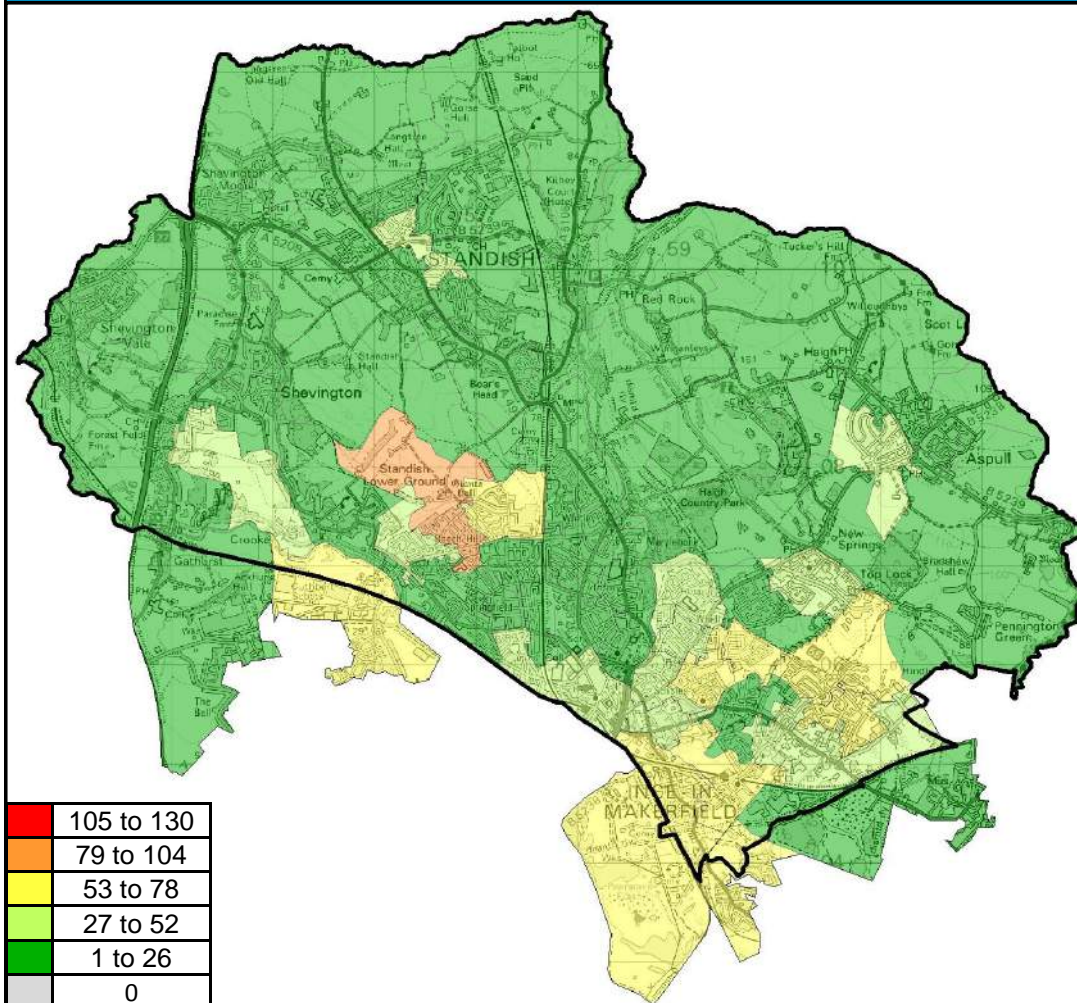
Locality 1 has the second lowest number of CAF assessments opened across all localities with 46 assessments. The highest concentration of CAF assessments opened is Higher Ince / Manchester Road.

The average CAF assessments across all localities is 55.

Locality Rank: 4th

Highest Concentration: Higher Ince / Manchester Road

Referrals to Children's Social Care



Overview

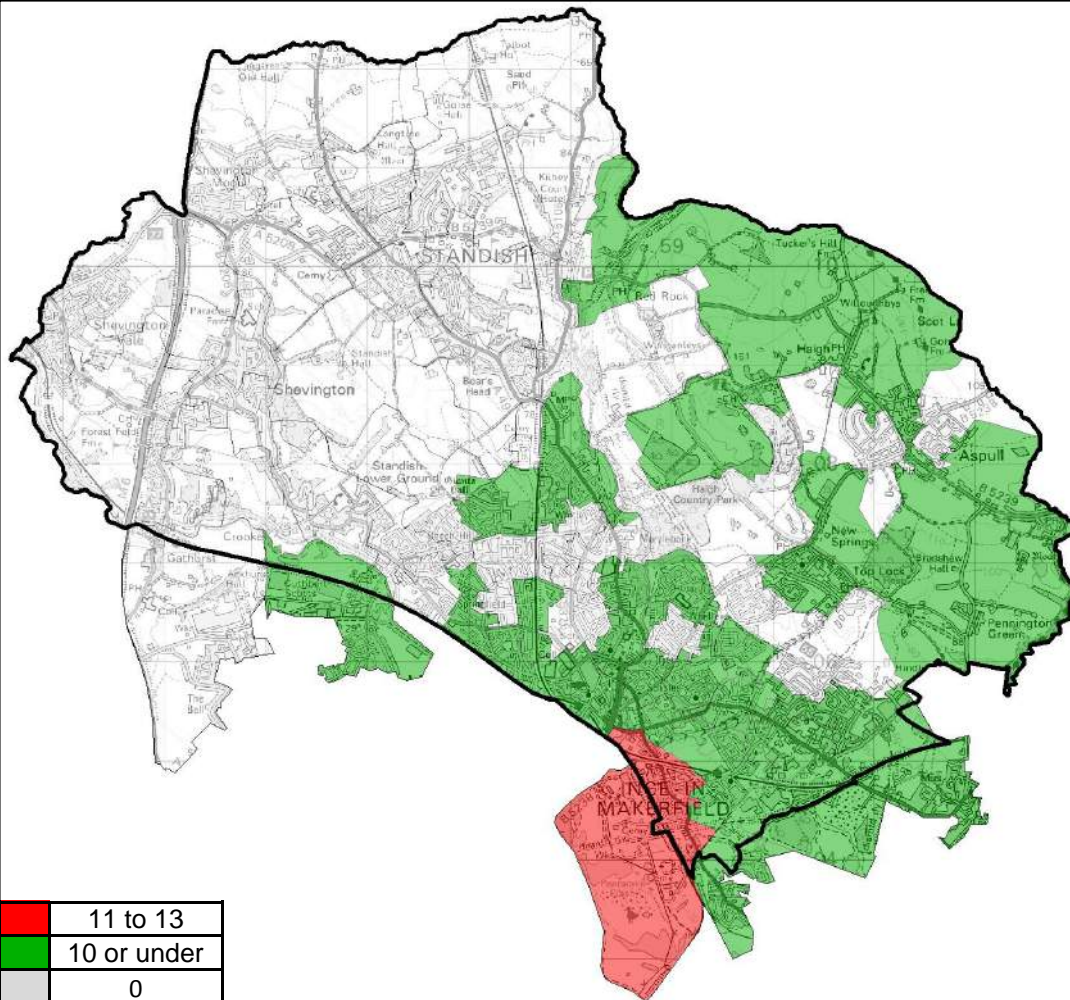
Locality 1 had the second highest number of referrals to Children's Social Care in 2013 of all Wigan Council's localities with 1319 referrals.

Beech Hill West had the most referrals of any LSOA in the Locality with 90 referrals.

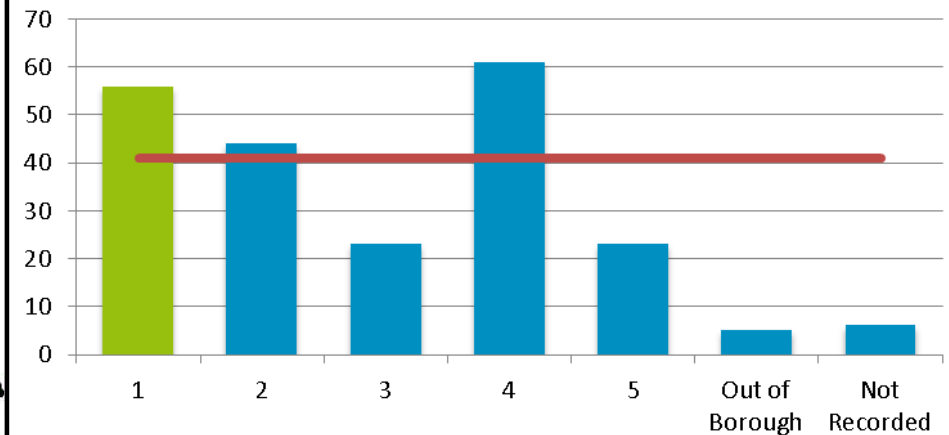
The average number of referrals to Children's Social Care in 2013 across all of the borough's Localities was 1238.

Locality Rank: 2nd
Highest Concentration: Beech Hill West

Child Protection Plans



Number of Children with a Child Protection Plan by Locality



Overview

Locality 1 has the second highest number of Children with a Protection Plan with 56 children identified.

The highest number of Children with a Protection Plan are situated in Lower Ince which is spread over Localities 1 and 2.

The average number of Children with a Protection Plan across the 5 localities is 41 children.

Wigan Council is in the second quartile for performance for rates of CPP when compared with statistical neighbours

4th

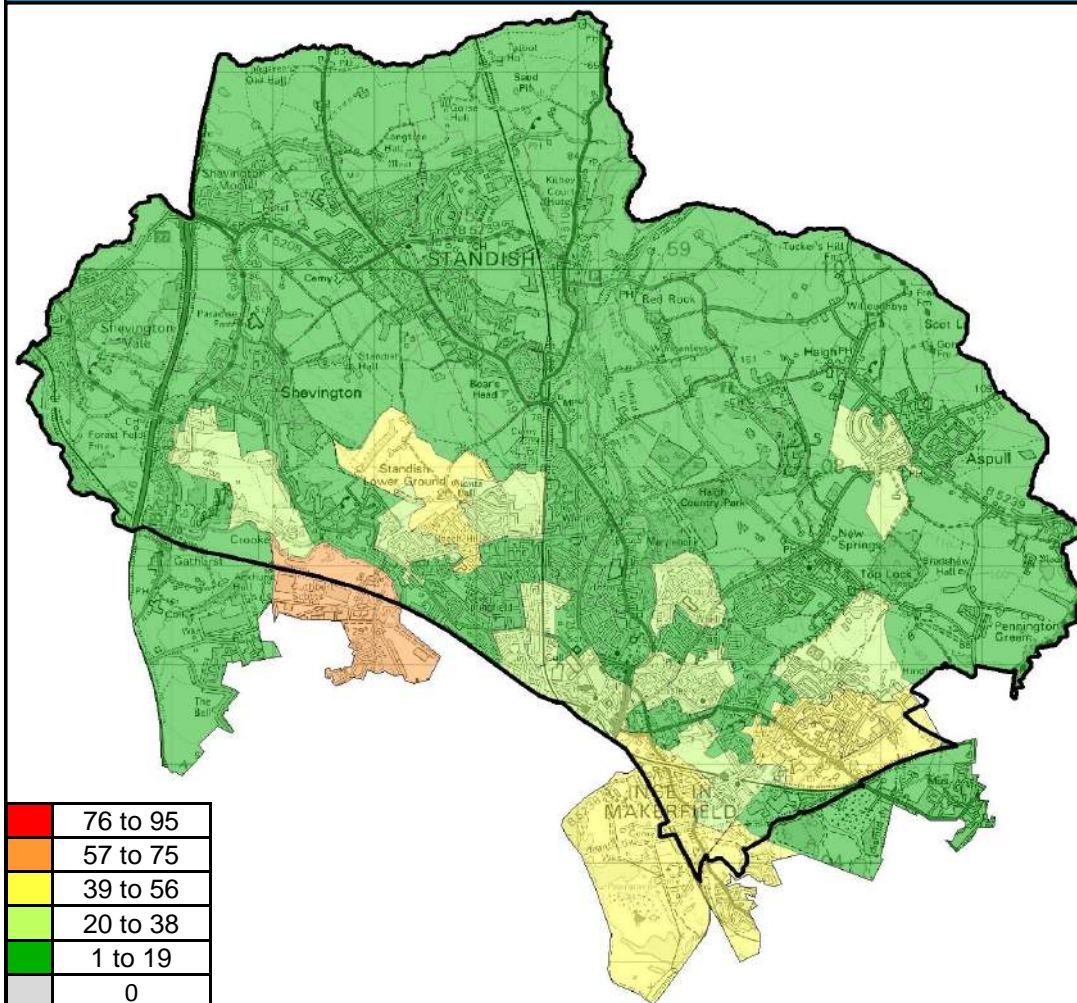
3rd

2nd

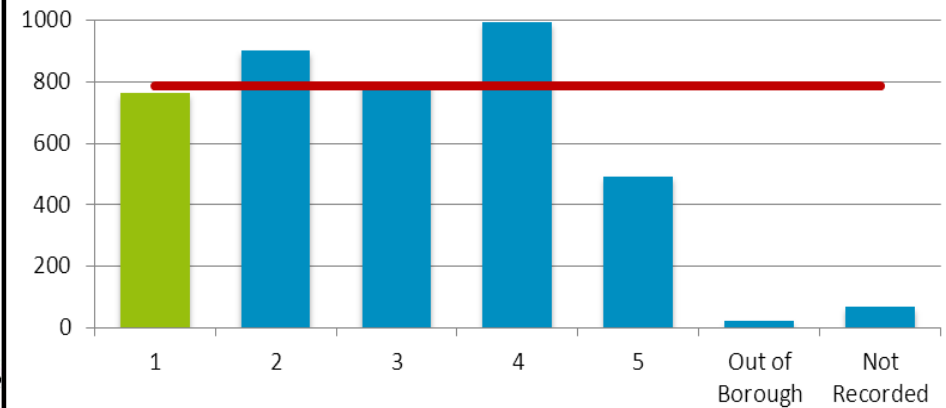
1st

Locality Rank: 2nd
Highest Concentration: Lower Ince

Gateway Referrals (Opened)



Number of Gateway Referrals Opened by Locality



Overview

Locality 1 had the second lowest number of Gateway referrals opened in 2013 of all Wigan Council's localities with 762 opened.

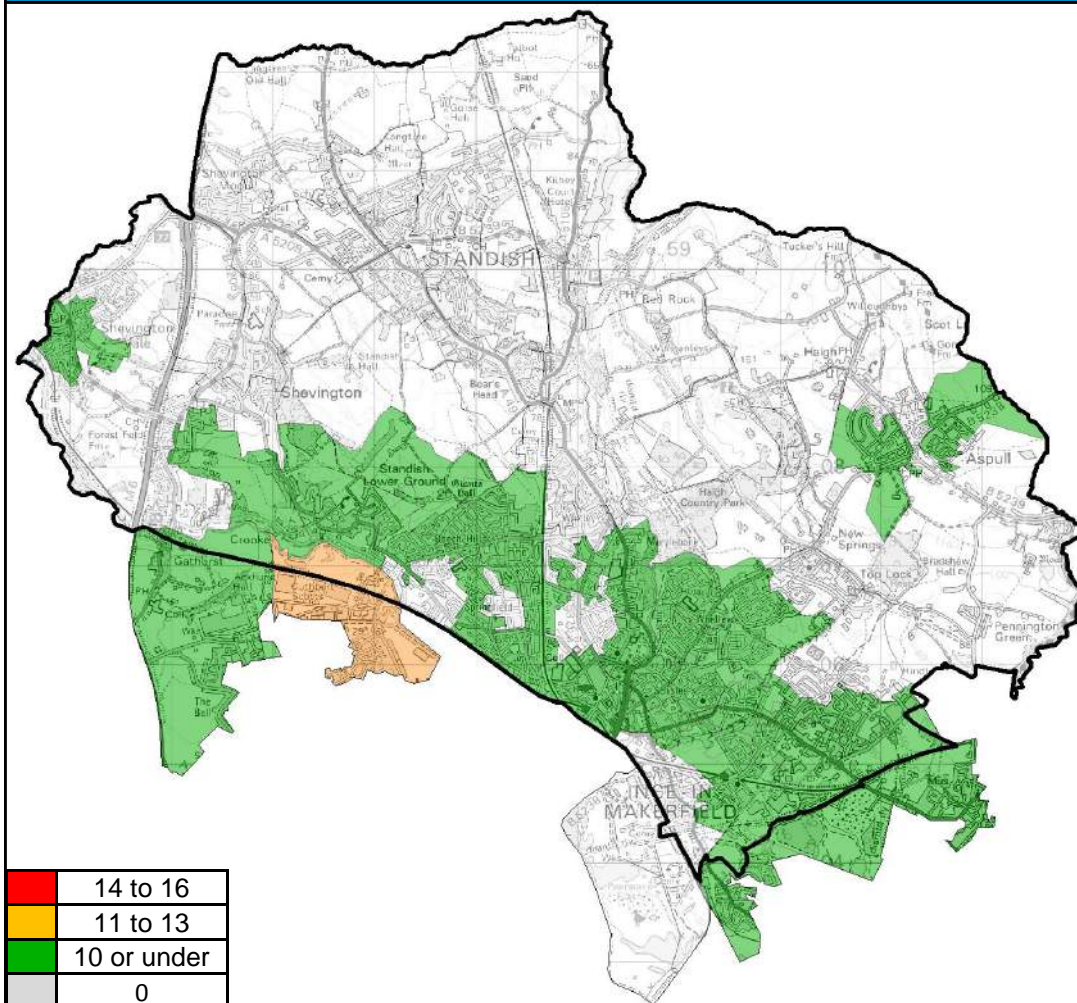
The area with most gateway referrals opened in 2013, Marsh Green East, is spread between Localities 1 and 2.

The average number of opened gateway referrals in 2013 was 787.

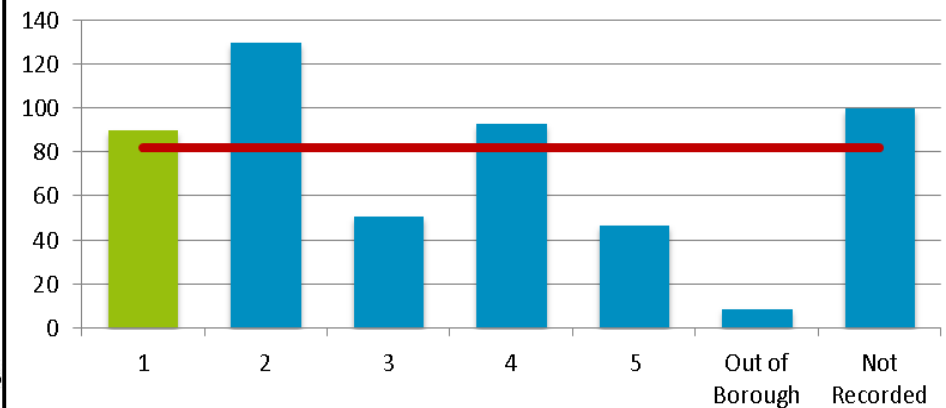
Locality Rank: 4th

Highest Concentration: Marsh Green East

Looked After Children



Number of Looked After Children by Locality



Overview

Locality 1 has the third highest number of Looked After Children of all Wigan Council's localities with 90 identified.

The highest number of Looked After Children are situated in Marsh Green East which is spread over Localities 1 and 2.

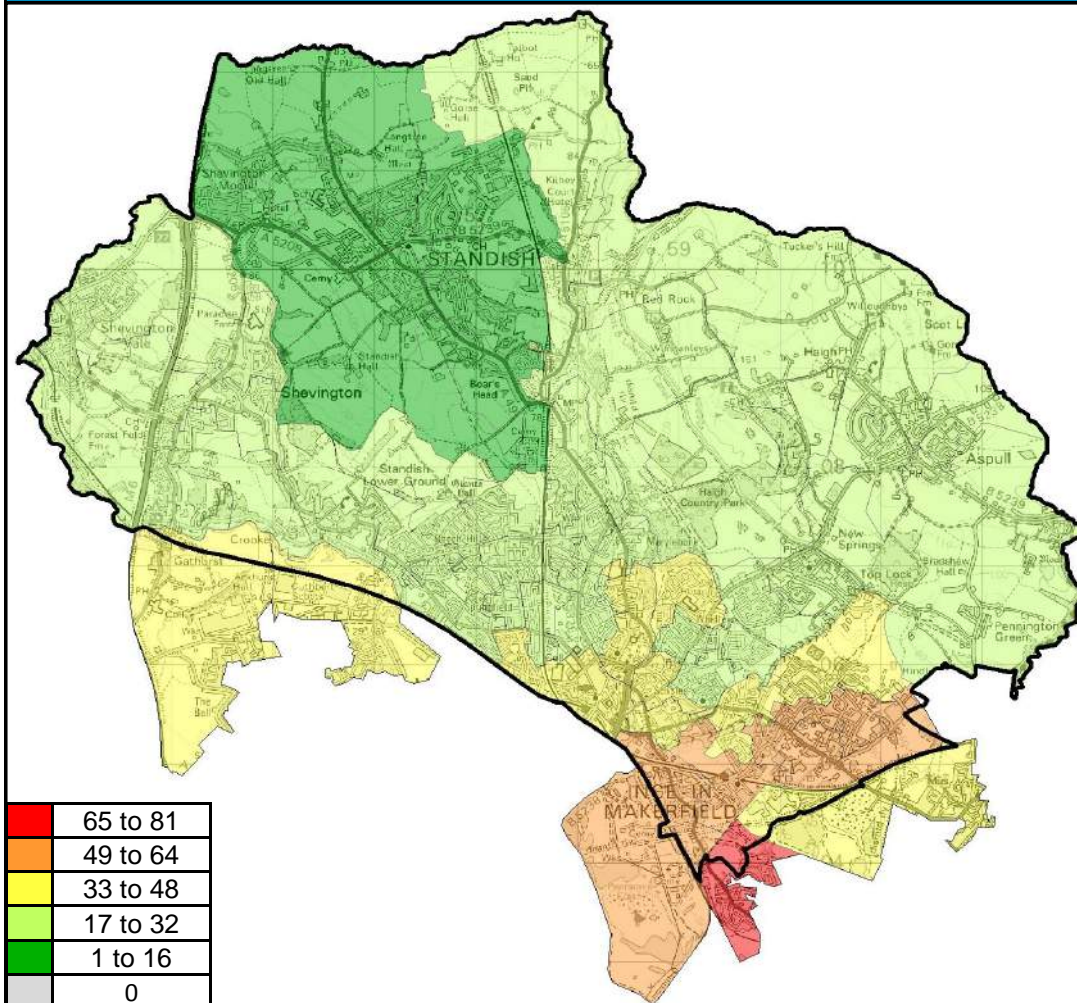
The average number of Looked After Children for all of the localities is 82 .

Wigan Council is in the second quartile for performance for rates of LAC when compared with statistical neighbours

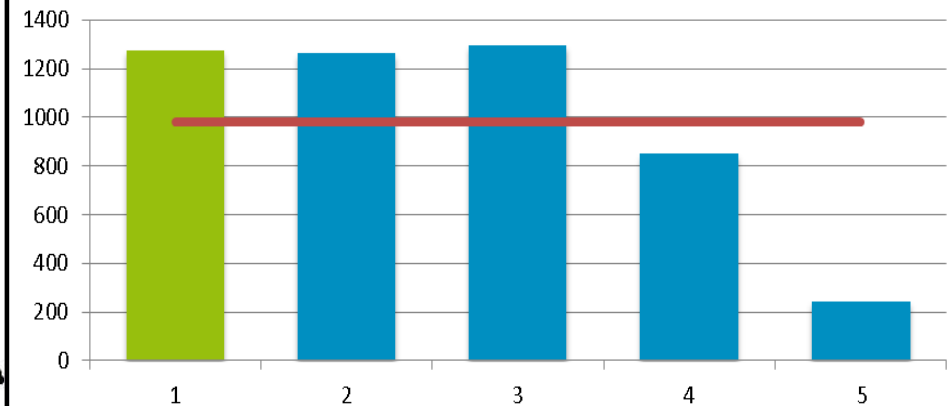
4th	3rd	2nd	1st
-----	-----	-----	-----

Locality Rank: 3rd
Highest Concentration: Marsh Green East

A&E Attendances for Under 5s



Number of A&E Attendances for Under 5s
by Locality



Overview

Locality 1 had the second highest number of A&E attendances for under 5s between April 13 and February 14 of all Wigan Council's localities with 1275 attendances.

The areas with the highest number of attendances are closer to Wigan Hospital. Areas further away from the centre may visit other hospitals.

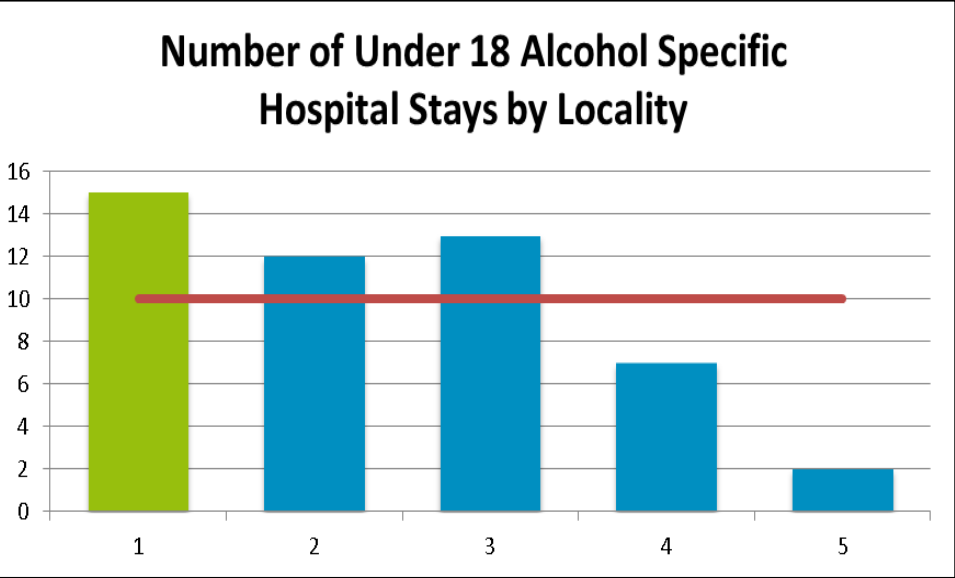
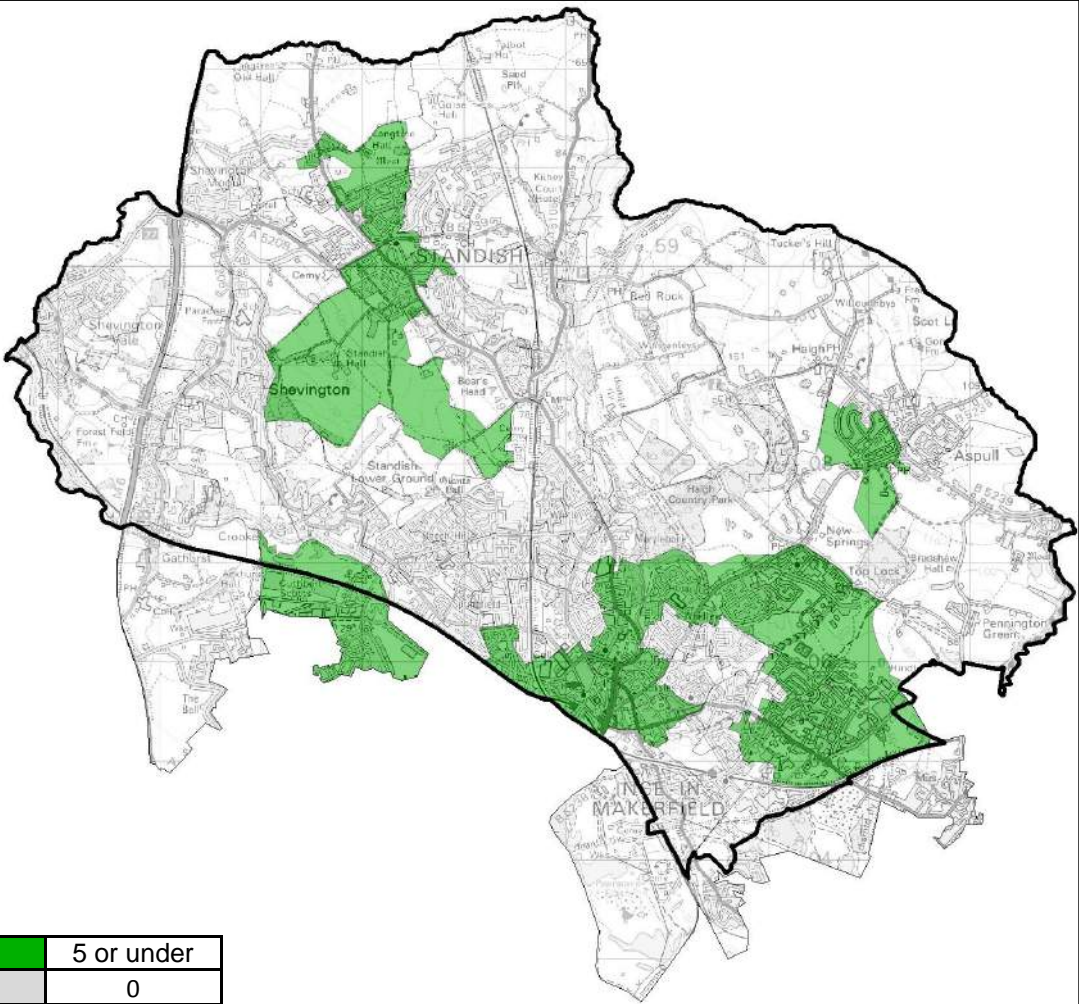
The average number of admissions across all of the Borough's Localities is 983.

Wigan Council is in the third quartile for performance for rates of A&E Attendances for under 5s when compared with national averages

4th	3rd	2nd	1st
-----	-----	-----	-----

Locality Rank: 2nd
Highest Concentration: Spring View

Alcohol Specific Hospital Stays for Under 18s



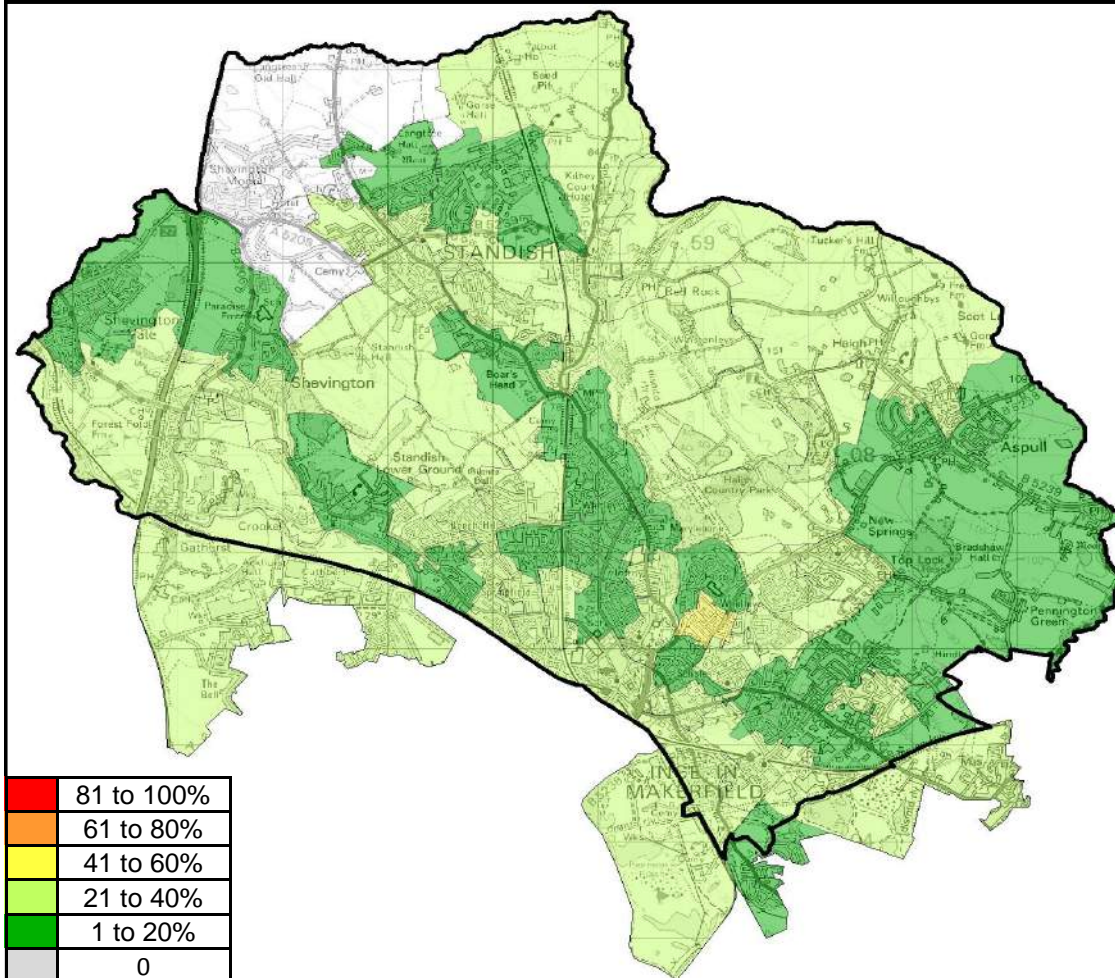
Overview

Locality 1 has the highest number of Under 18 alcohol specific hospital stays with 15 hospital stays identified.

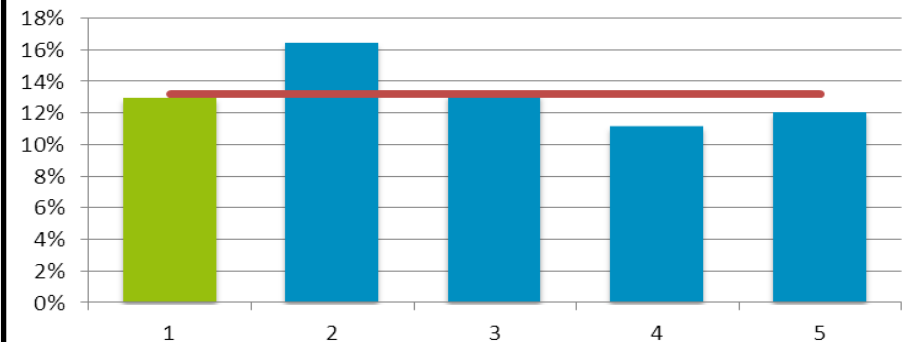
The average number of Under 18 alcohol specific hospital stays across all localities was 10.

Locality Rank: 1st

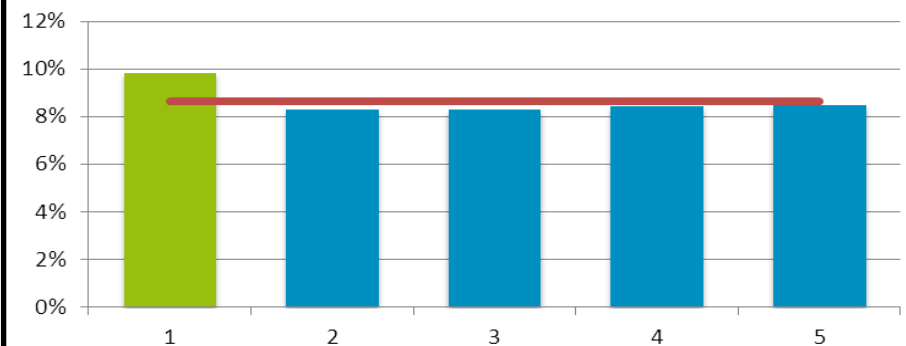
Child Obesity (Reception)



Rate of Overweight Children in Reception by Locality



Rate of Obese Children in Reception by Locality



Overview

Locality 1 has the second highest rate of overweight and obese children in reception when compared to other localities in the borough. Locality 1 has the highest rate of obese children in reception with Higher Ince having the largest rate.

Wigan Council is in the second quartile for performance for rates of child obesity in reception when compared with national averages

4th

3rd

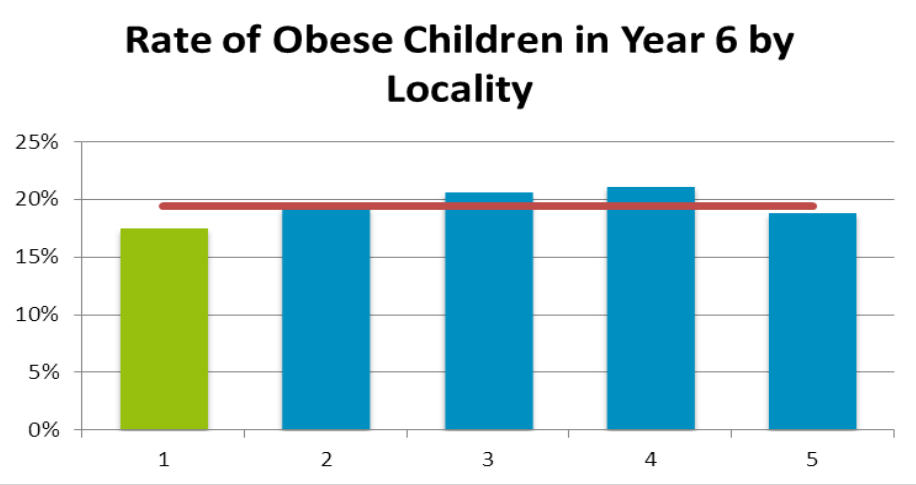
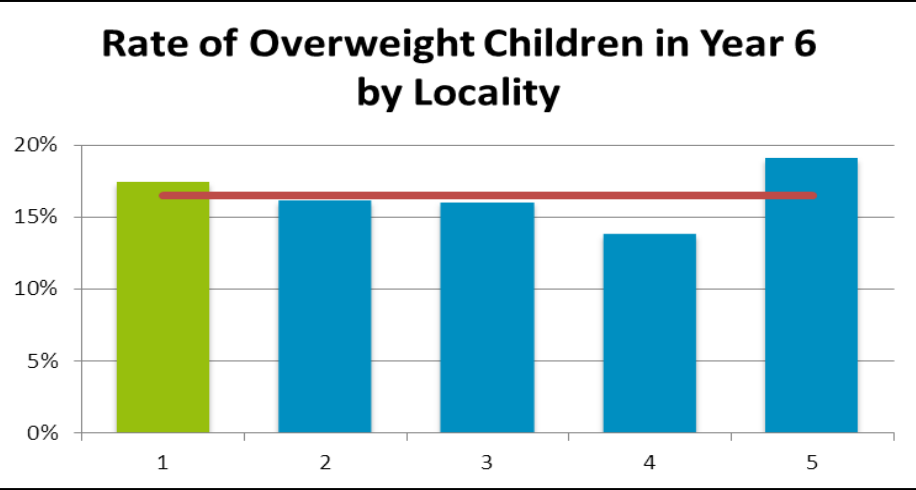
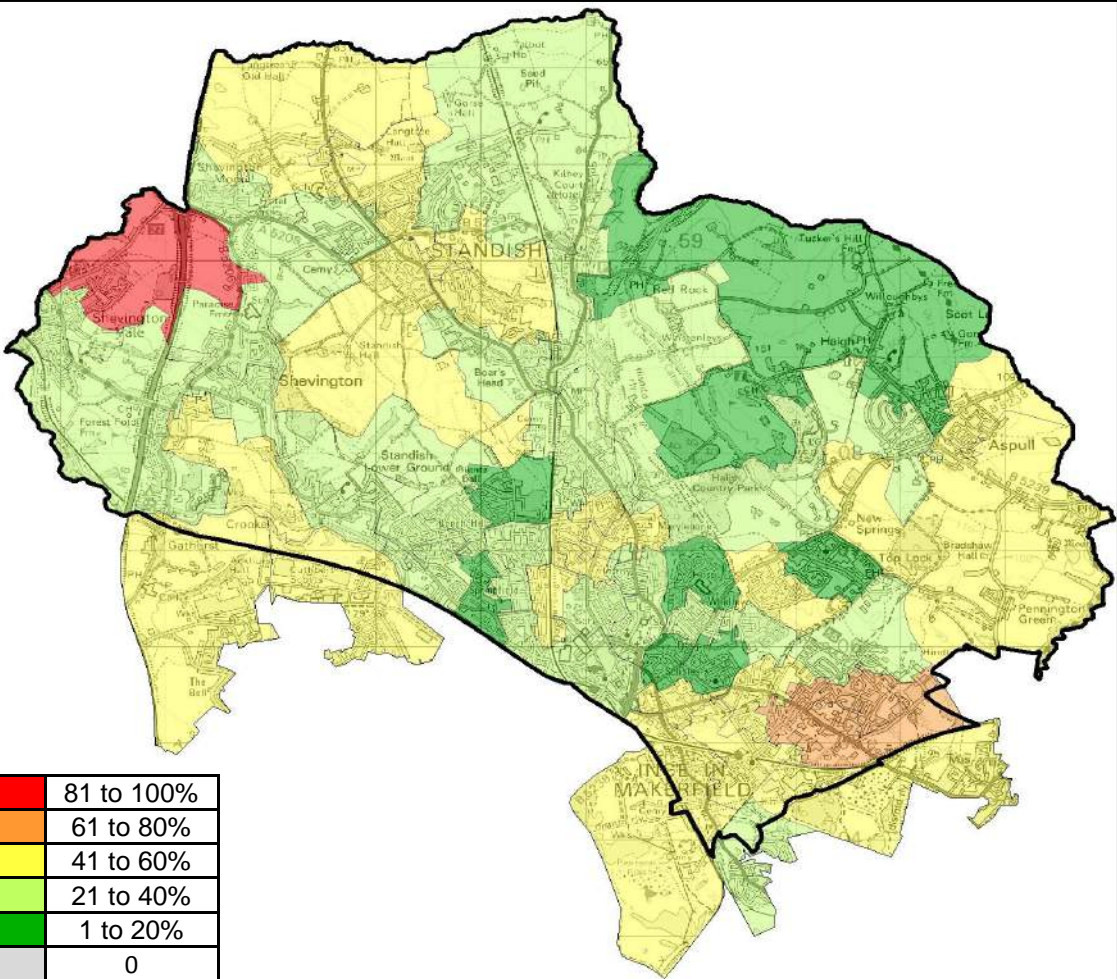
2nd

1st

Locality Rank: 2nd

Highest Concentration: Higher Ince

Child Obesity (Year 6)



Overview

Locality 1 has the joint third most overweight and obese children in Year 6 along with localities 2 and 4. However, Locality 1 has the lowest rate of obese children, a more severe overweight category, thus has been ranked the best of all localities for child obesity at year 6. Shevington Vale is the worst affected area for child obesity in year 6.

Wigan Council is in the second quartile for performance for rates of child obesity in year 6 when compared with national averages

4th

3rd

2nd

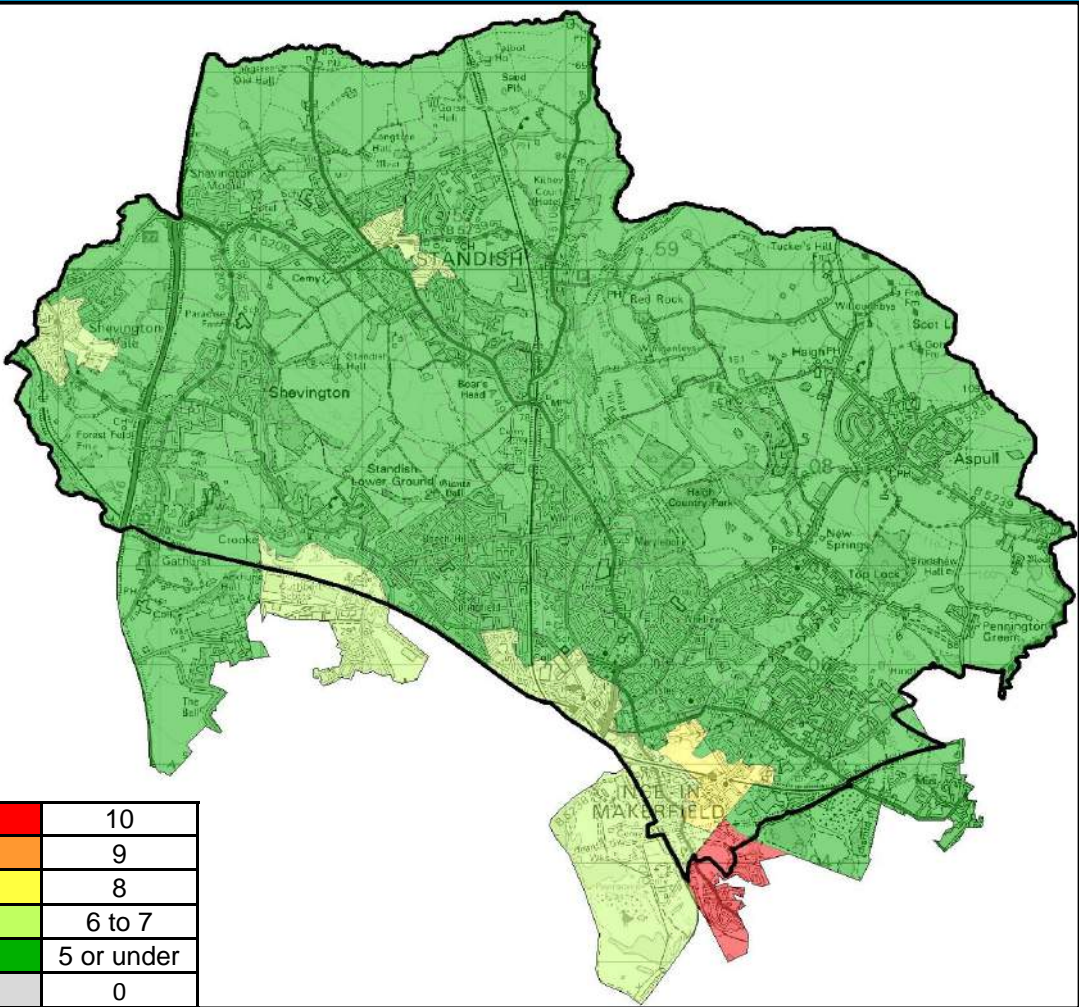
1st

Locality Rank: 5th*

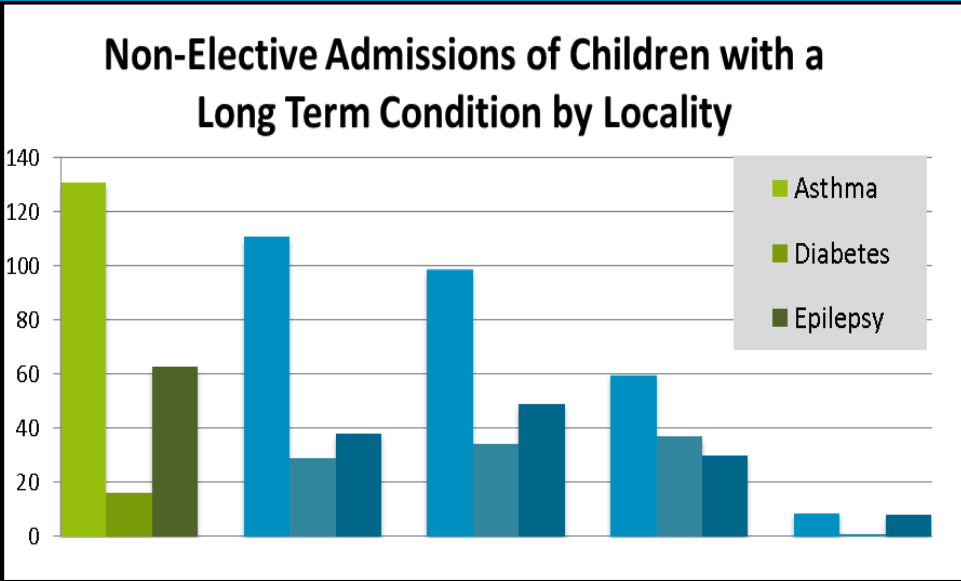
Highest Concentration:

Shevington Vale

Non-Elective Admissions of Children with a Long-term Condition



Locality Rank: 1st
Highest Concentration: Spring View



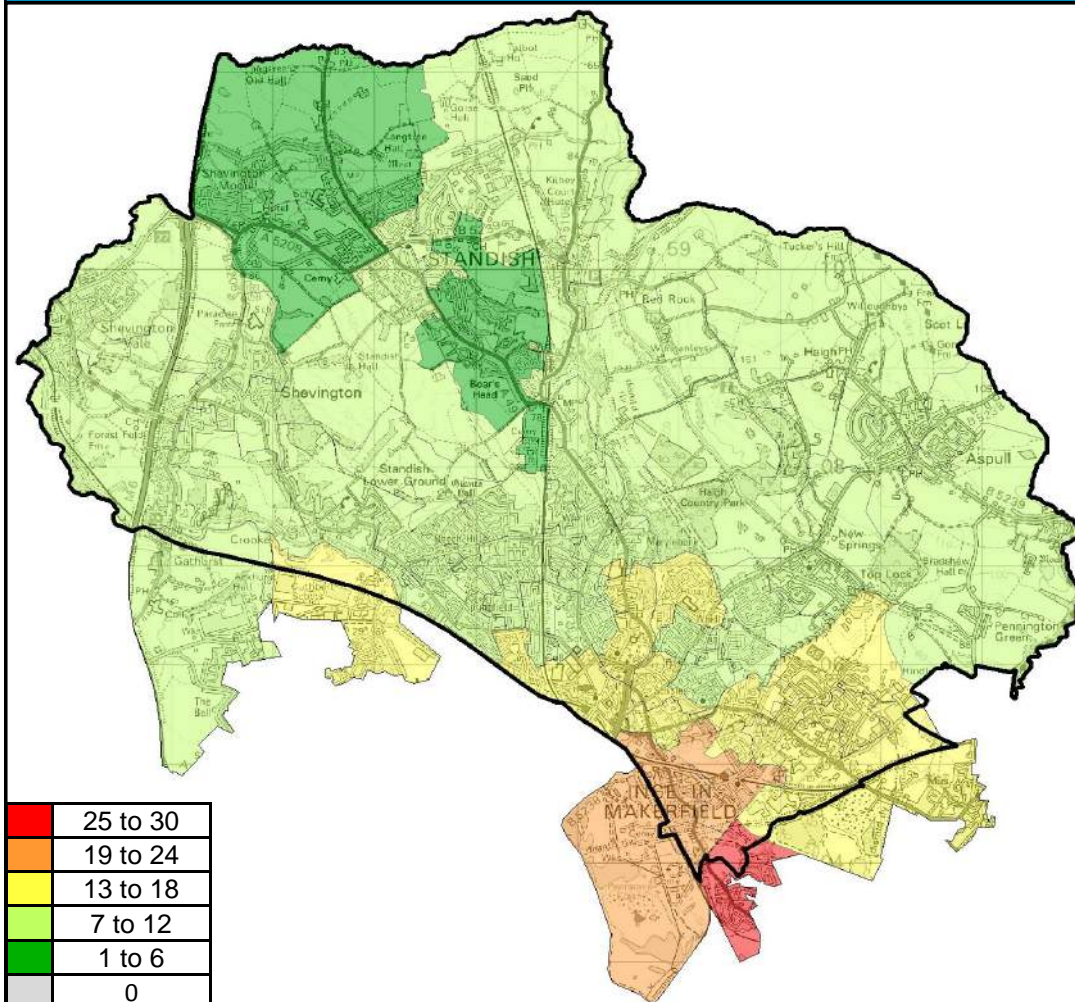
Overview

Locality 1 has the highest number of identified Non-Elective Admissions of Children with a Long Term condition of all Wigan Council's localities with 210 identified.

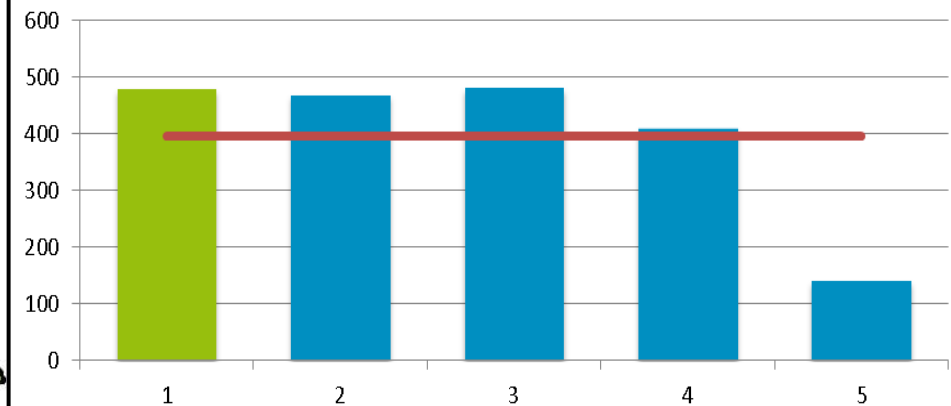
Spring View has the highest concentration of Non-Elective Admissions of Children with a Long Term condition within locality 1.

The average number of identified Non-Elective Admissions of Children with a Long Term condition of all Wigan Council's localities was 143 admissions.

Non-elective Admissions for Under 5s



Number of Non-Elective Admissions for Under 5s by Locality



Overview

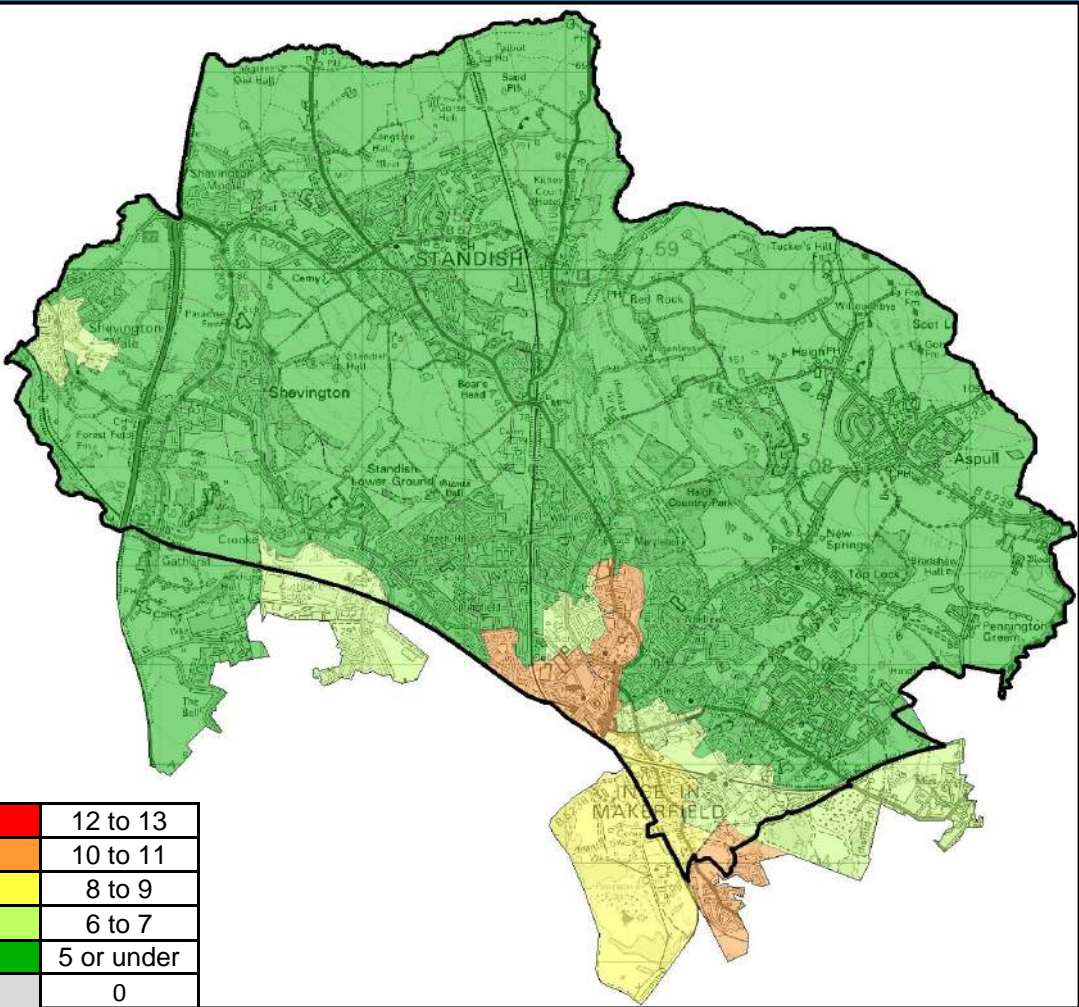
Locality 1 had the second highest number of non-elective admissions for under 5s between April 13 and February 14 of all Wigan Council's localities with 479 admissions.

The areas with the highest number of admissions are closer to Wigan Hospital. Areas further away from the centre may visit other hospitals.

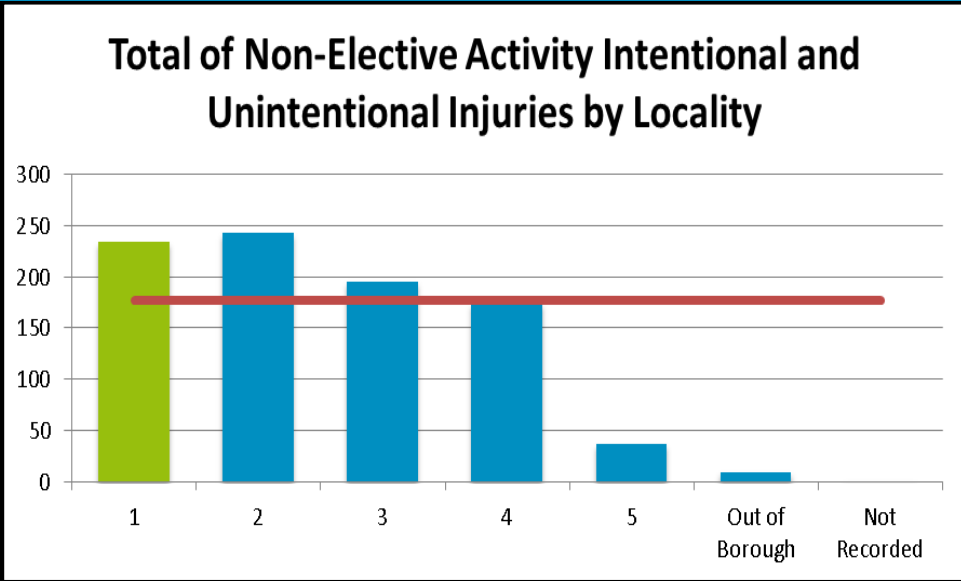
The average number of admissions across all of the Borough's Localities is 396.

Locality Rank: 2nd
Highest Concentration: Spring View

Non-elective Activity for Intentional and Unintentional Injuries



Locality Rank: 2nd
Highest Concentration: Springfield / Wigan Town Centre

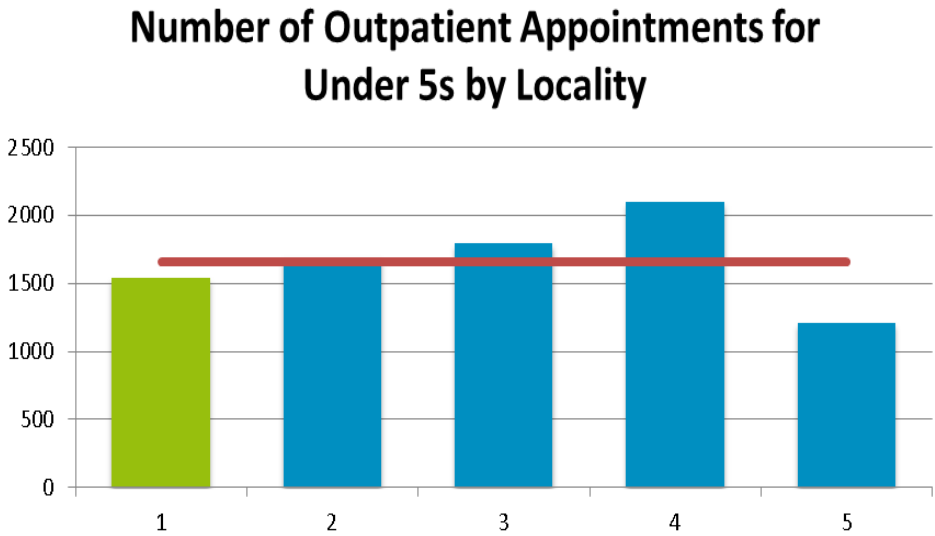
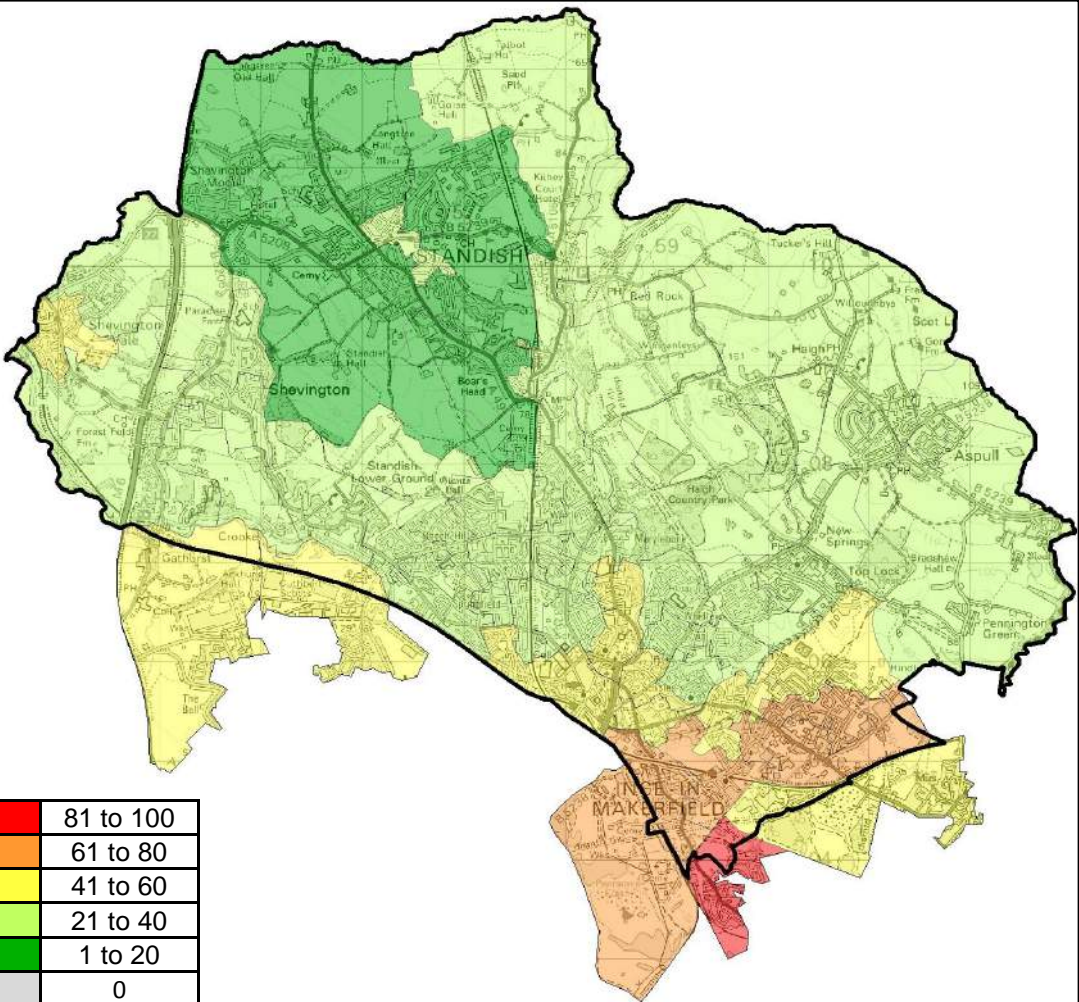


Overview

Locality 1 has the 2nd highest number of Non-Elective activity intentional and unintentional injuries with 234 injuries. The highest concentration is Springfield / Wigan Town Centre with 11 injuries .

The average number of Non-Elective activity intentional and unintentional injuries across all localities is 177.

Outpatient Appointments for Under 5s



Overview

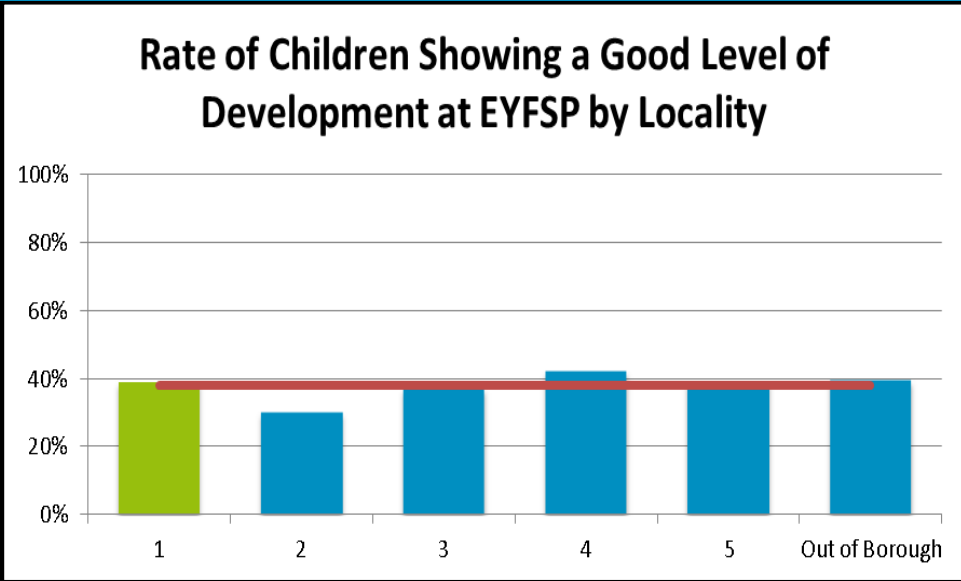
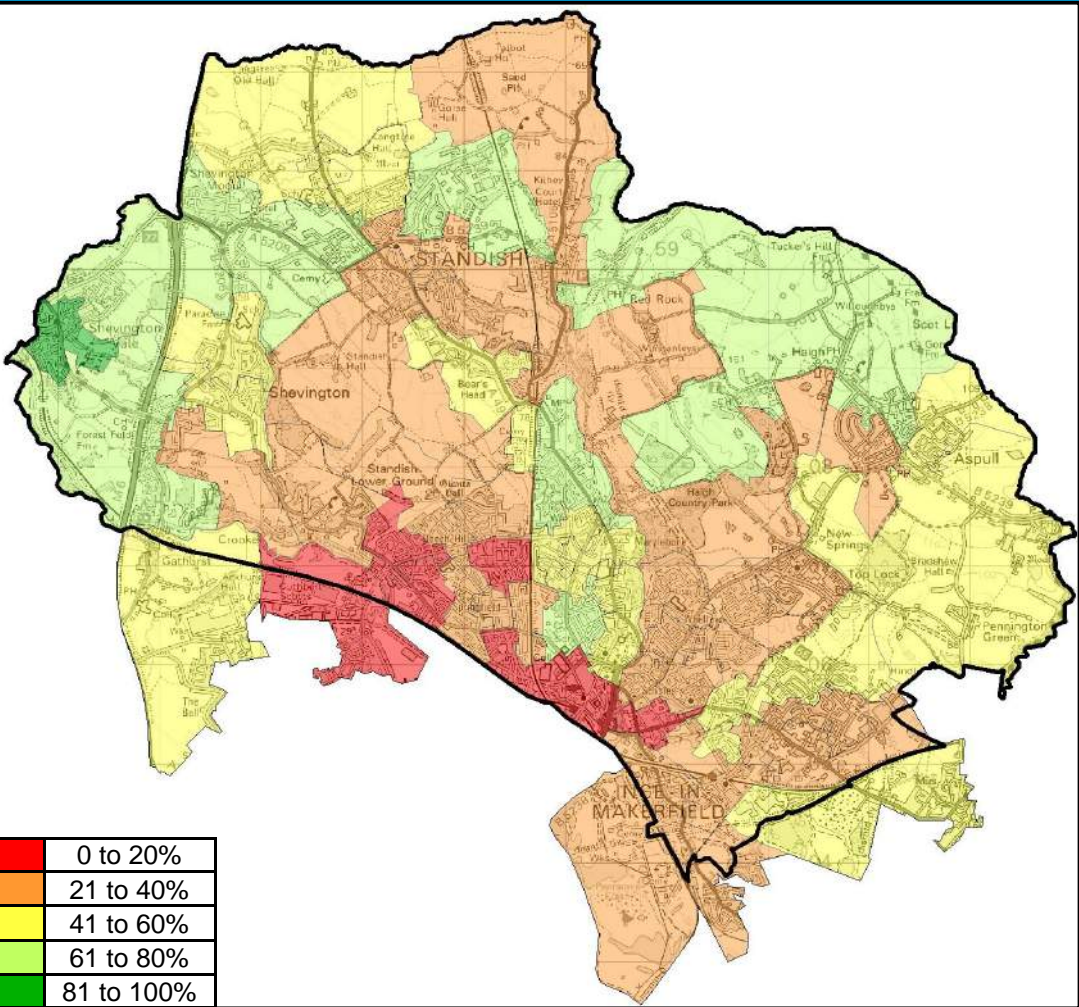
Locality 1 has the 4th lowest number of Outpatient Appointments for Under 5s with 1536 children identified. The highest concentration of Outpatient Appointments for Under 5s is Spring View with 97 children.

The joint 2nd highest areas for Outpatient Appointments for Under 5s are Higher Ince, Higher Ince/ Manchester Road and Lower Ince/ Ince Green Lane with 62 children identified respectively.

The average number of Outpatient Appointments for Under 5s across all localities is 1662.

Locality Rank: 4th
Highest Concentration: Spring View

EYFSP—Children Showing a Good Level of Development



Overview

Locality 1 has the third highest rate of children showing a good level of development at EYFSP by locality with 39% comparable to the borough average of 38%. Gidlow North has the lowest concentration of children showing a good level of development at EYFSP within locality 1.

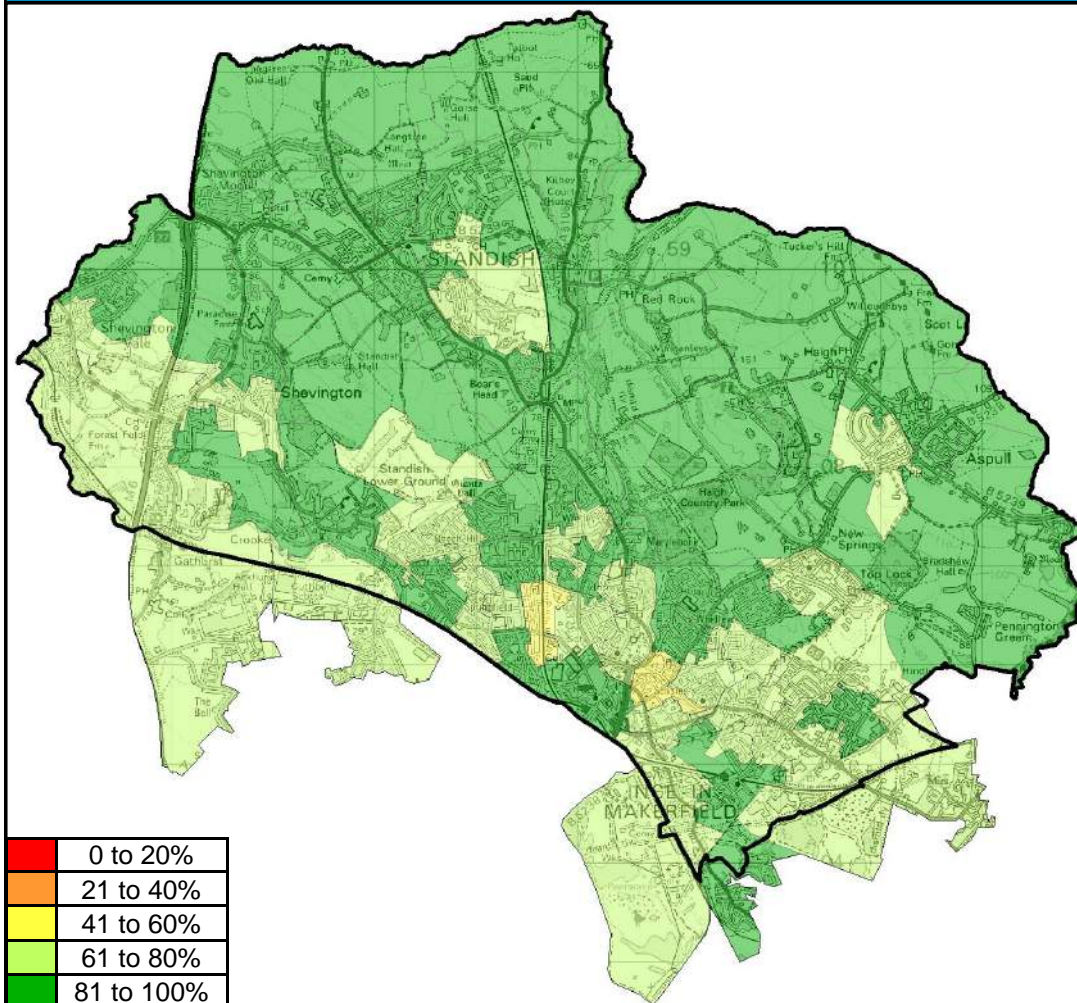
Beech Hill / Giants Hall Road, Woodhouse Lane, Springfield / Wigan Town Centre and Darlington Street East are also areas for concern with less than 20% of children showing a good level of development in Early Years.

Wigan Council is in the bottom quartile for performance for rates of Children showing a good level of development when compared with statistical neighbours

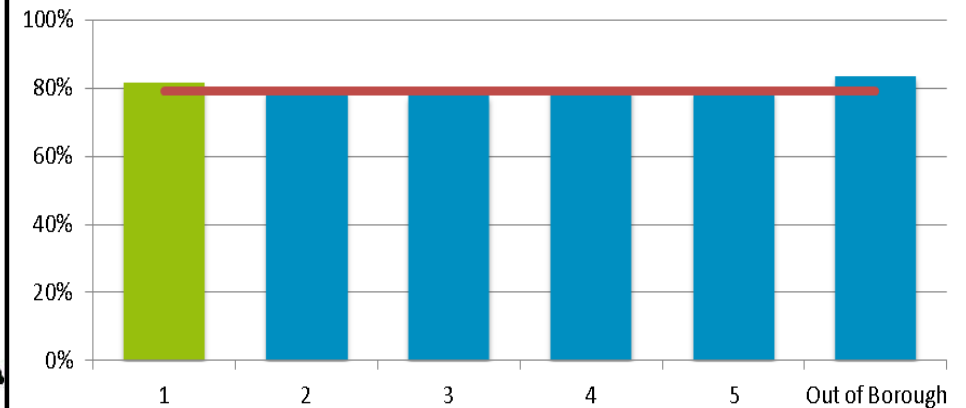
Locality Rank: 3rd
Lowest Concentration: Gidlow North

4th	3rd	2nd	1st
-----	-----	-----	-----

Attainment at Key Stage 2



Rate of Children Achieving Level 4 Reading, Writing and Maths at KS2 by Locality



Overview

Locality 1 has the highest rate of children achieving level 4 in Reading, Writing and maths at key stage 2 with 81%. The lowest concentration within locality 1 is Gidlow .

The average across all localities is 79%.

Wigan Council is in the top quartile for performance for attainment at KS2 when compared with statistical neighbours

Locality Rank: 5th
Lowest Concentration: Gidlow

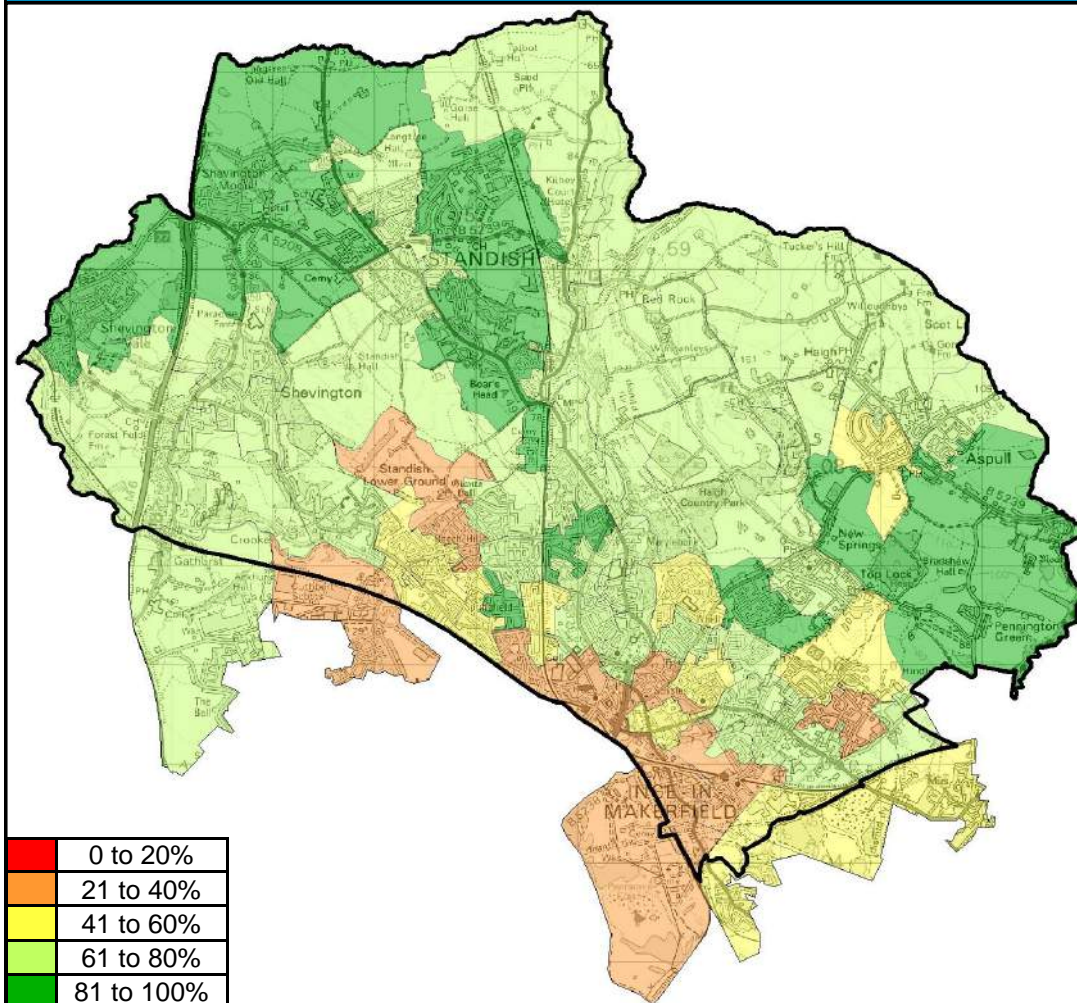
4th

3rd

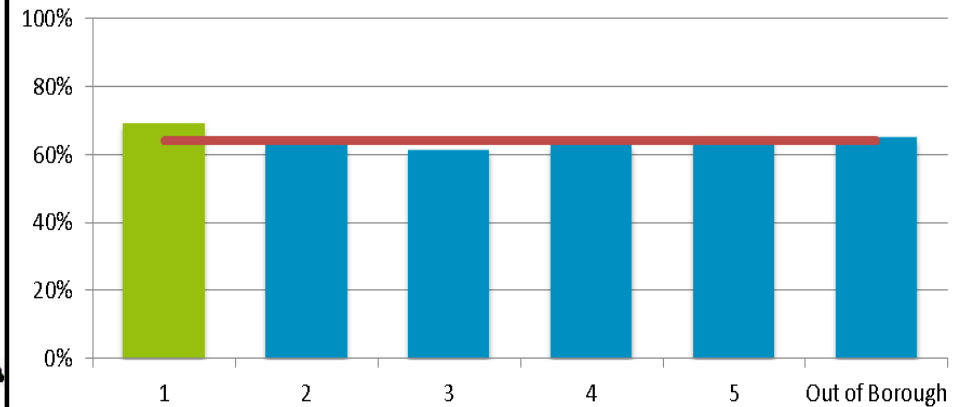
2nd

1st

Attainment at Key Stage 4



Rate of Children Achieving 5 A*-C GCSEs at KS4 by Locality



Overview

Locality 1 has the highest rate of children achieving 5A*-C GCSEs at KS4 by locality with 69%. The lowest concentration within locality 1 is Lower Ince/ Ince Green Lane with 28%.

The average across all localities is 64%.

Wigan Council is in the first quartile for rates of attainment at KS4 when compared with statistical neighbours.

Locality Rank: 5th
Lowest Concentration: Lower Ince / Ince Green Lane

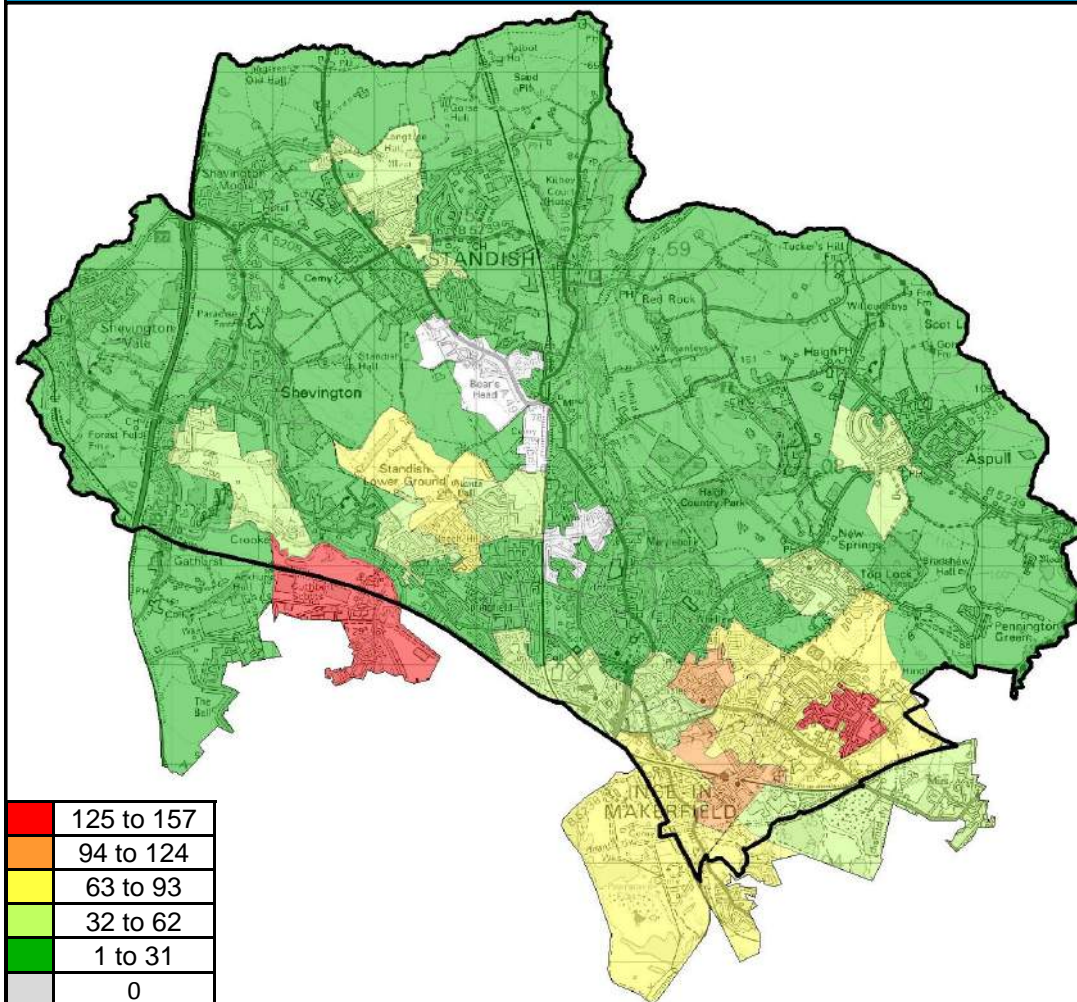
4th

3rd

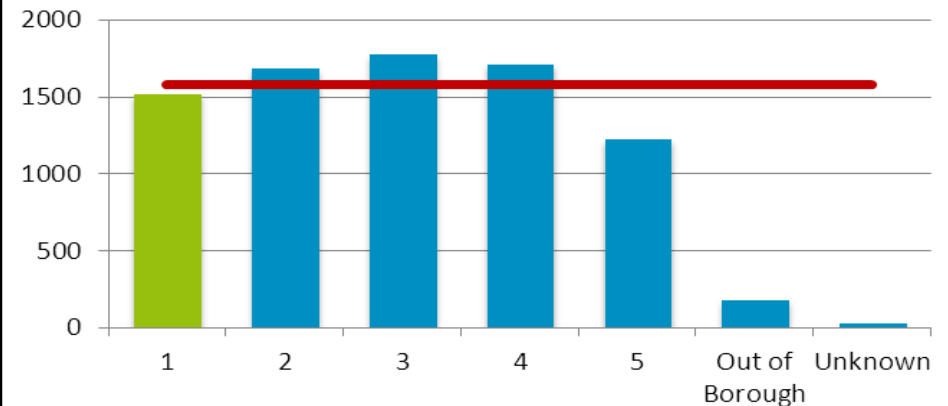
2nd

1st

Eligibility for Free School Meals



Number of Children Eligible for Free School Meals by Locality



Overview

Locality 1 has the second lowest number of children that are eligible for free school meals with 1513 eligible as at January 2014.

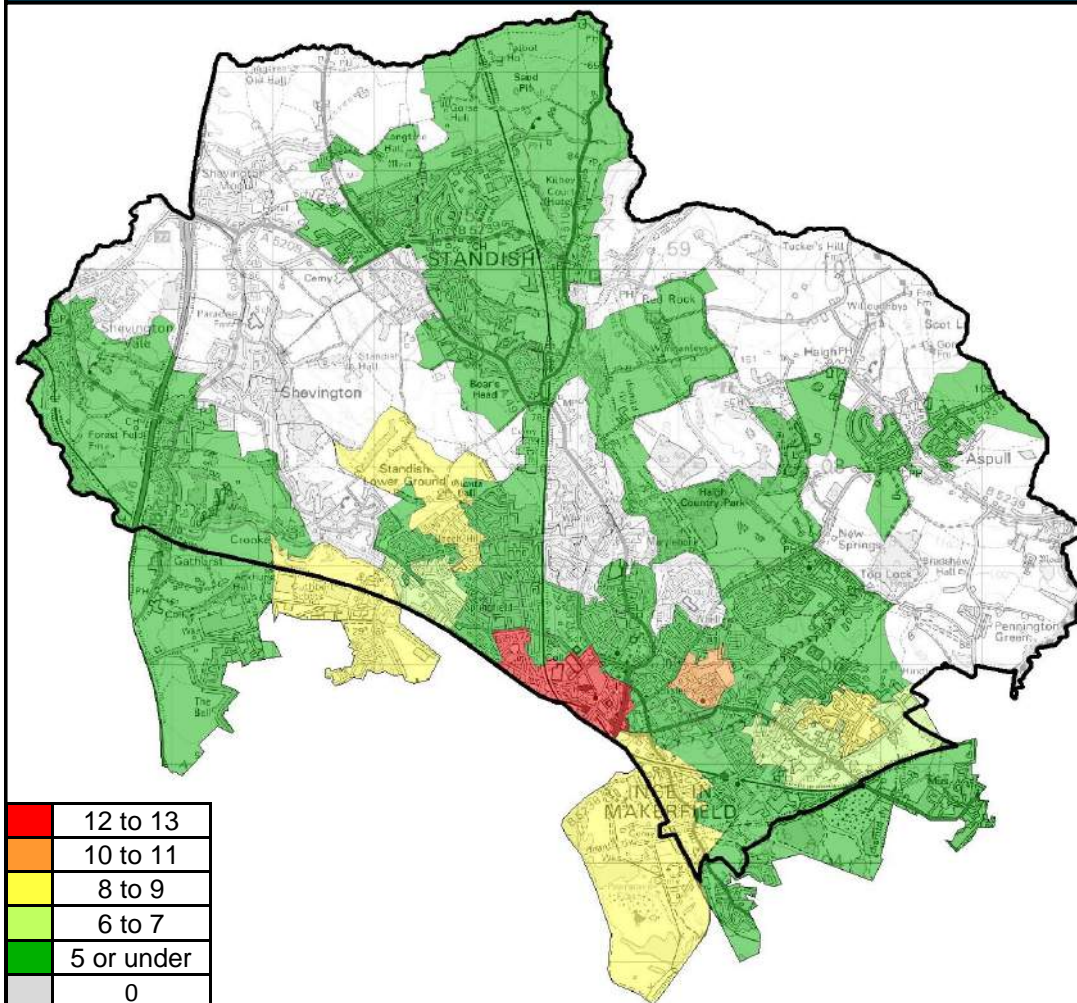
Higher Ince has the highest concentration of eligible children with 146 children eligible for free school meals. Marsh Green East is also a high concentration area with 126 children eligible for free school meals.

The Locality average is 1579 eligible children.

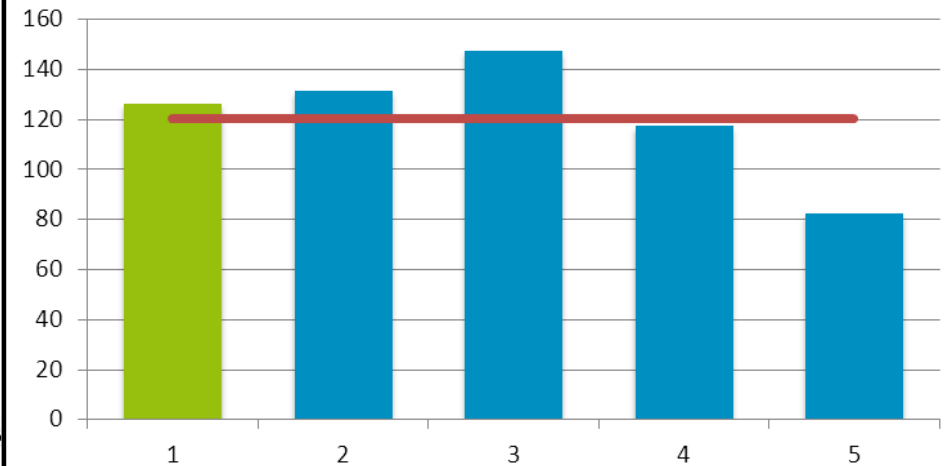
Locality Rank: 4th

Highest Concentration: Higher Ince

NEET (16-18)



Number of NEET 16-18 by Locality



Overview

Locality 1 has the third highest number of identified NEET 16-18 year olds of all Wigan Council's localities with 126 identified.

Springfield / Wigan Town Centre has the highest number of NEET in the borough with 13.

The average across the borough is 121.

Wigan Council is in the second quartile for rates of NEET (16-18) when compared with statistical neighbours.

4th

3rd

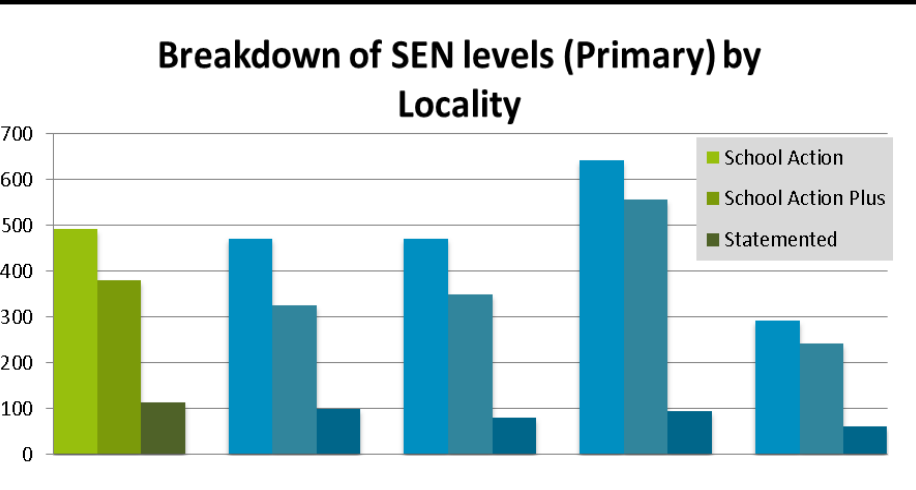
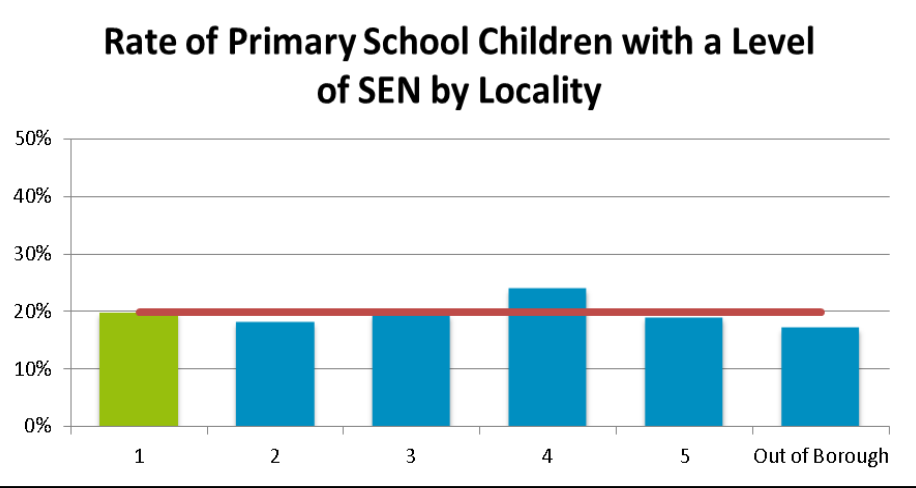
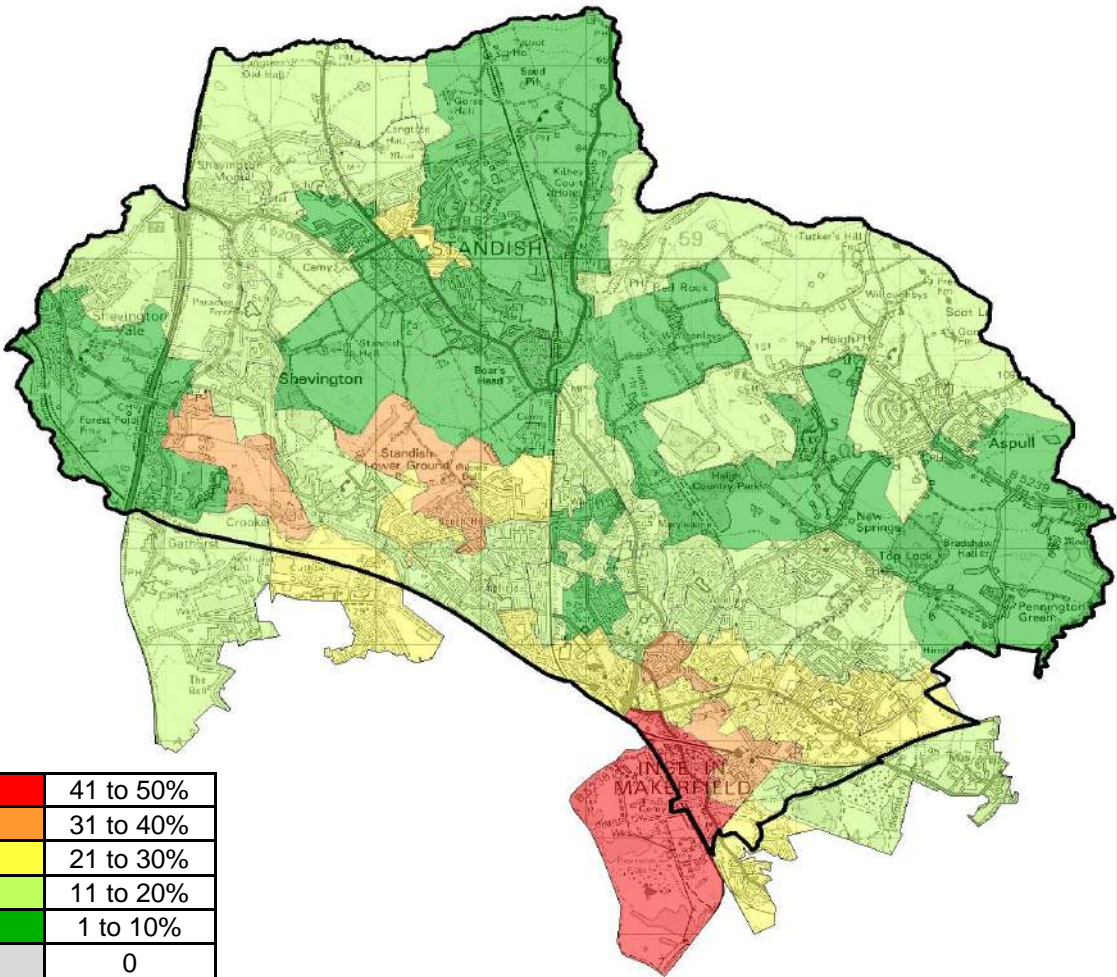
2nd

1st

Locality Rank: 3rd

Highest Concentration: Springfield / Wigan Town Centre

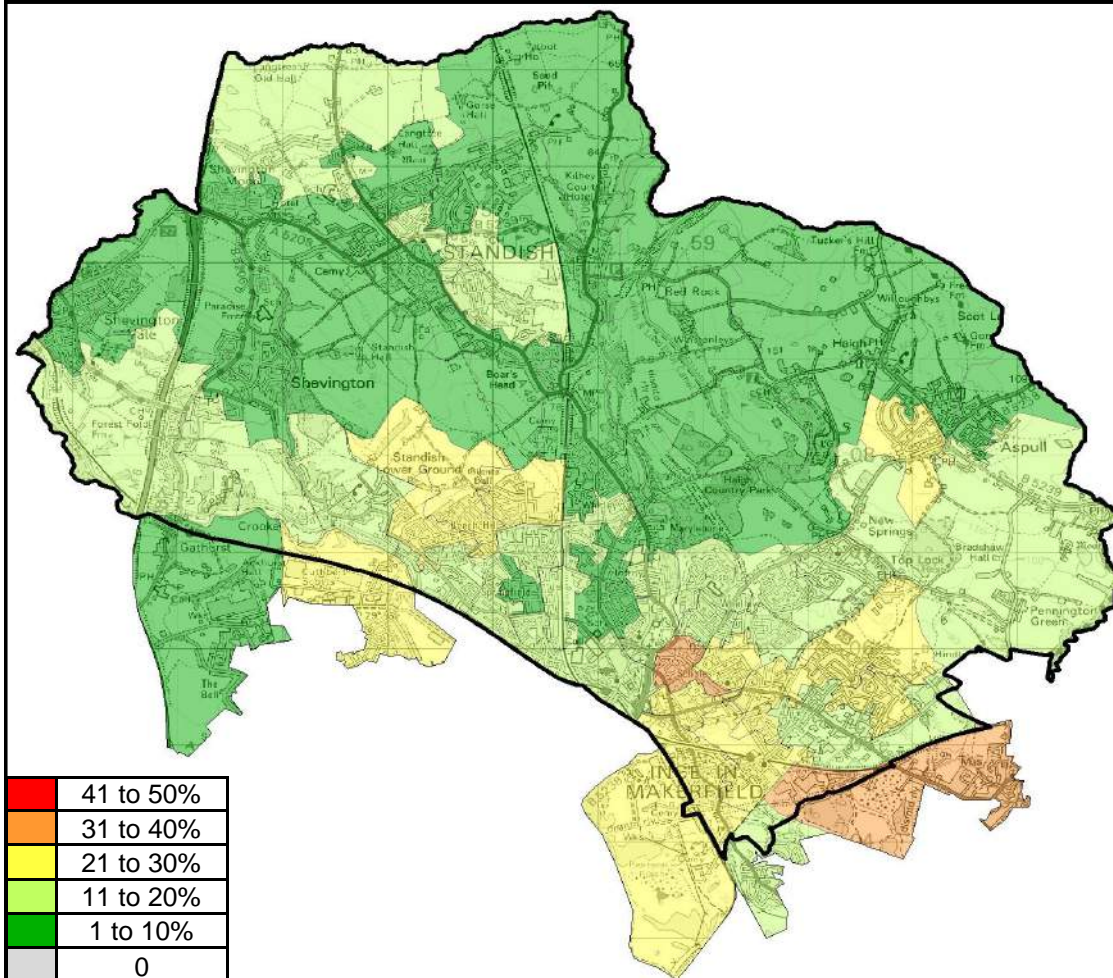
Children with a level of SEN (Primary)



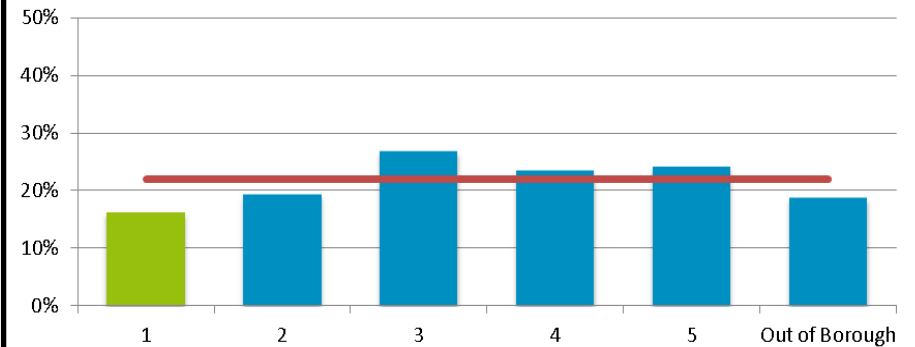
Overview Locality 1 has the second highest overall rate of children with a level of SEN within all of the localities with a rate of 20%. Lower Ince has the highest concentration of children with a level of SEN in Locality 1 with nearly 42% while Lower Ince / Ince Green Lane also has a high rate of SEN. The borough average is 20% per locality.

Locality Rank: 2nd
Highest Concentration:
Lower Ince

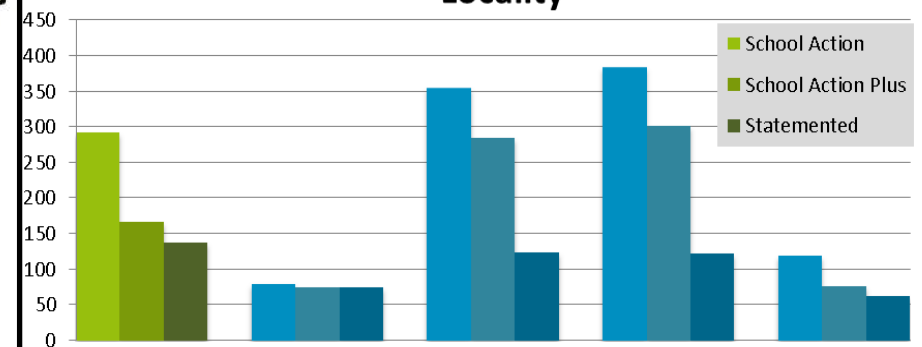
Children with a level of SEN (Secondary)



Rate of Secondary School Children with a Level of SEN by Locality



Breakdown of SEN levels (Secondary) by Locality



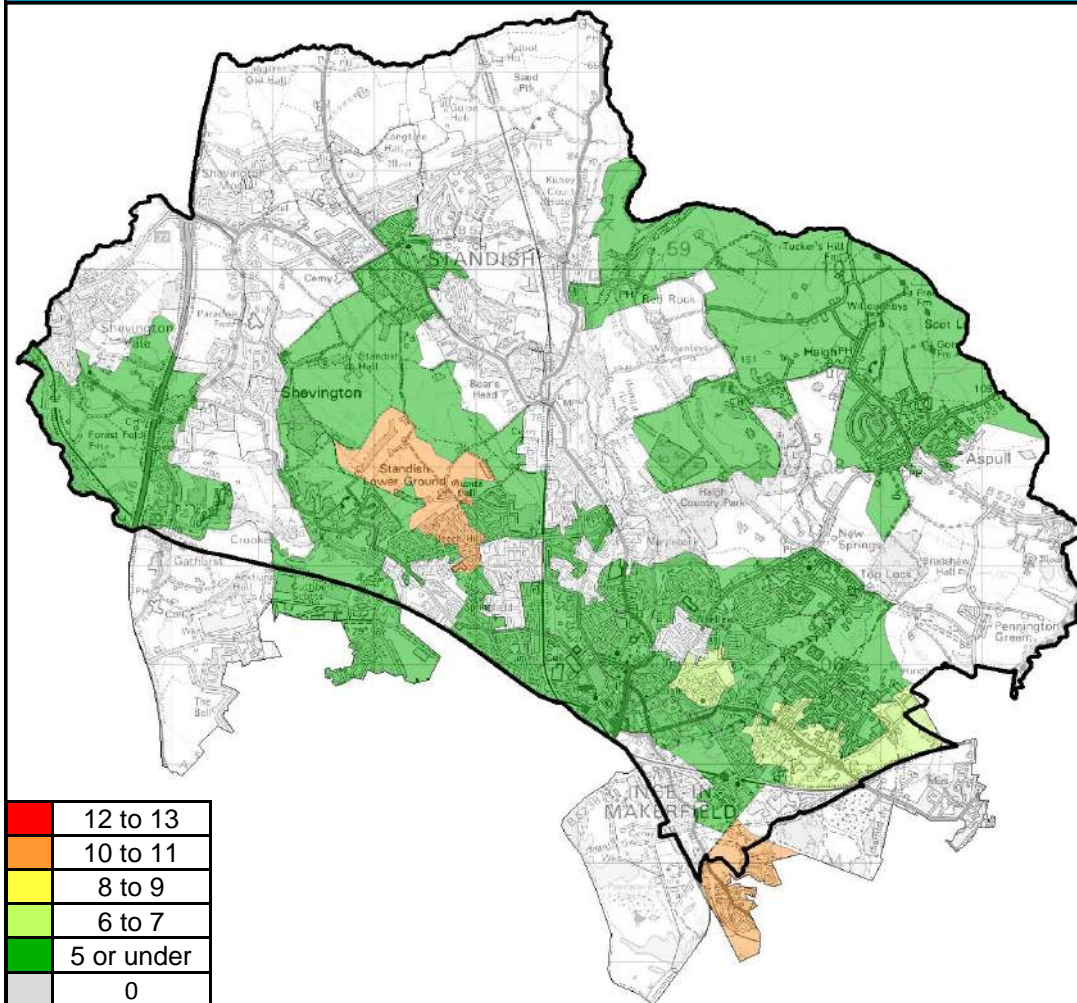
Overview

Locality 1 has the lowest overall rate of secondary school children with a level of SEN of all localities with a rate of 16%. Scholes has the highest concentration of children with a level of SEN within the locality with a rate of just over 34%.

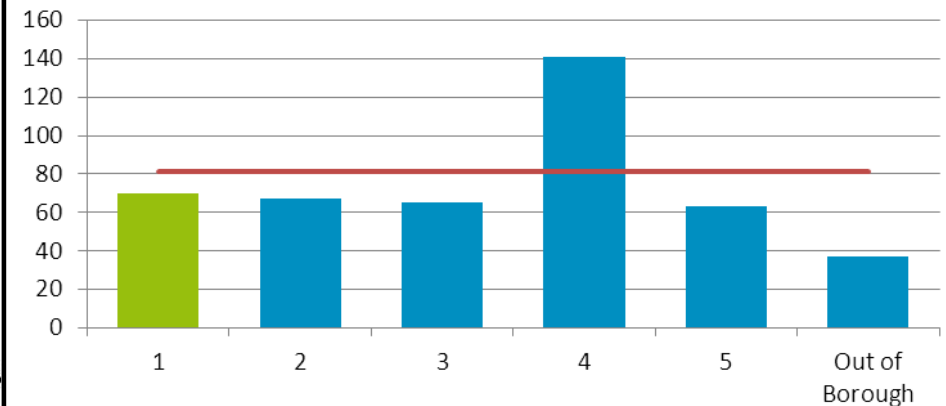
The borough average rate is 22% across all localities.

Locality Rank: 5th
Highest Concentration: Scholes

Children with 15%+ Unauthorised Absence



Number of Children with 15%+ Unauthorised Absence by Locality



Overview

Locality 1 has the second highest number of children who have a high rate of unauthorised absence but figures are comparable amongst localities 1, 2, 3 and 5.

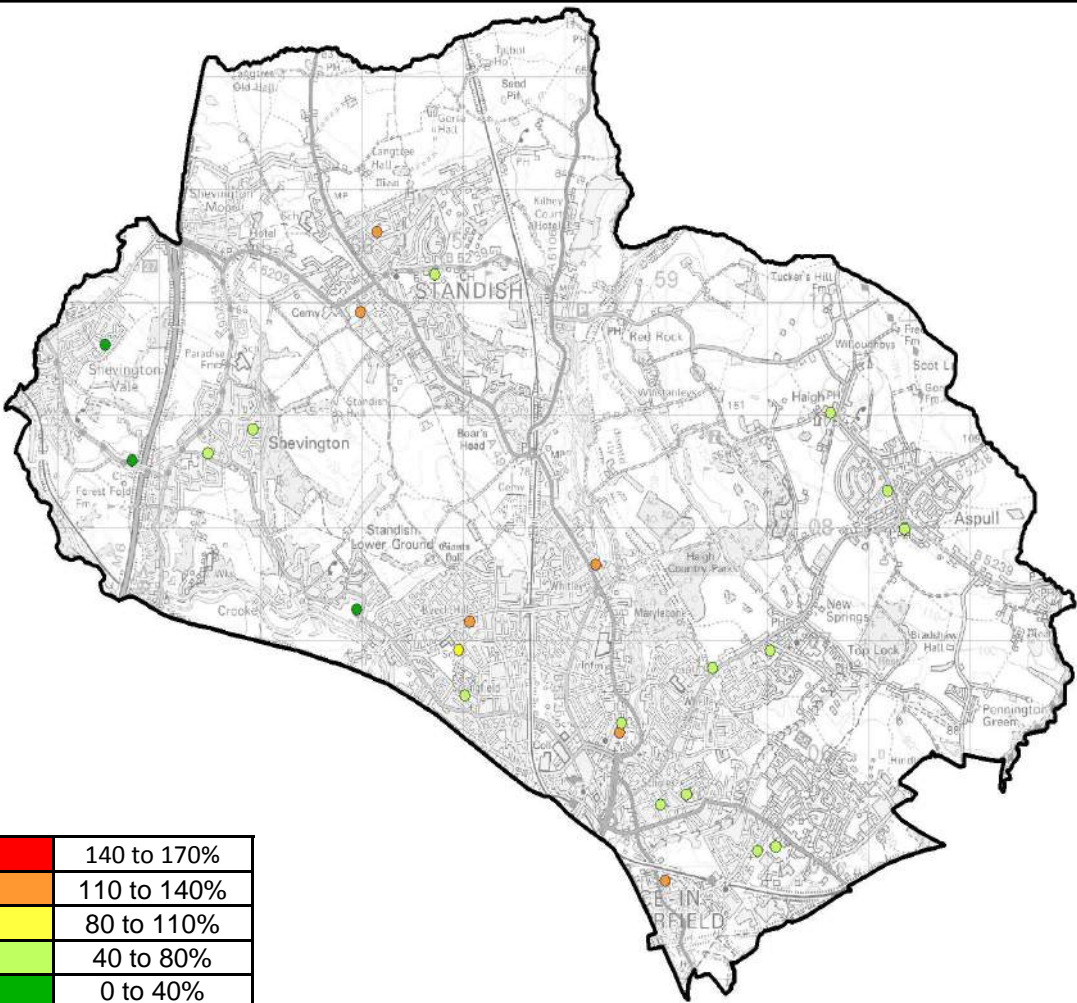
Beech Hill West has the highest concentration of children with 15%+ unauthorised absence.

The average number of children with 15%+ unauthorised absence is 81 across all localities.

Locality Rank: 2nd

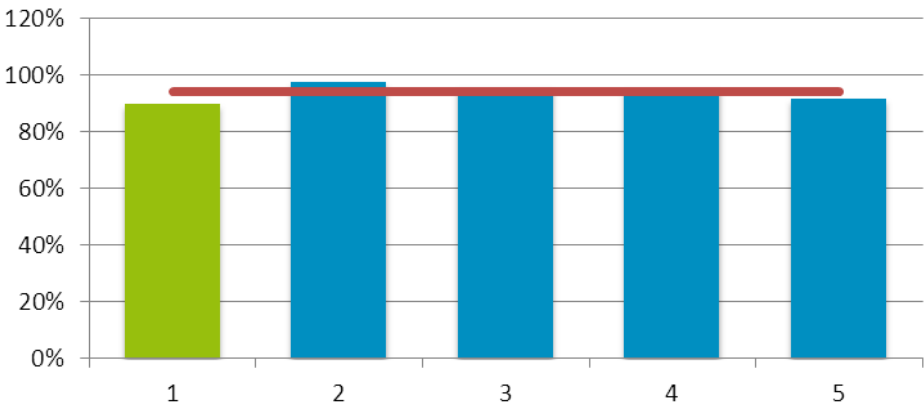
Highest Concentration: Beech Hill West

Demand for School Places (Primary)



Locality Rank: 1st

Number of 1st Preferences by Available Places in Localities



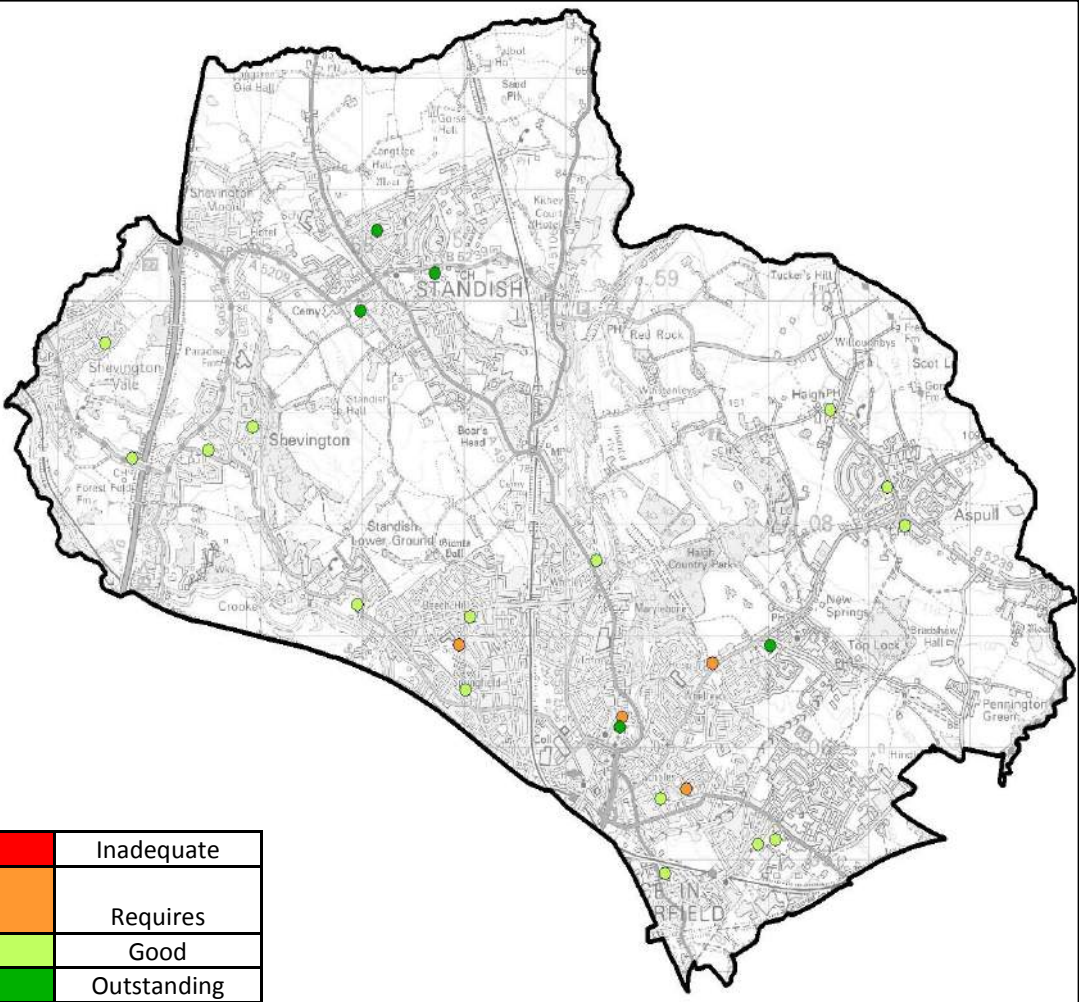
Overview

Locality 1 has the lowest rate of demand for primary school places of all Wigan borough's localities.

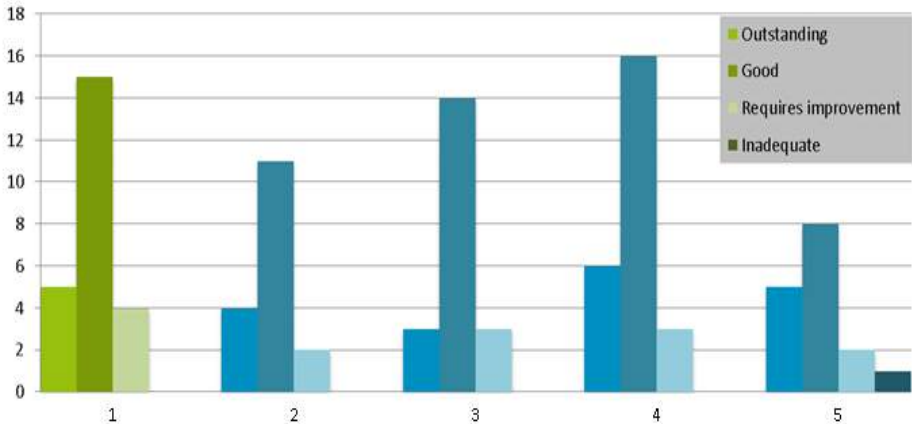
Three schools have under 40% first preferences compared to available places namely Shevington Vale, Shevington Community and Standish Lower Ground St. Anne's.

Six schools have over 100% first preferences compared to available places. Woodfield has the largest percentage with 140%.

School Ofsted Ratings (Primary)



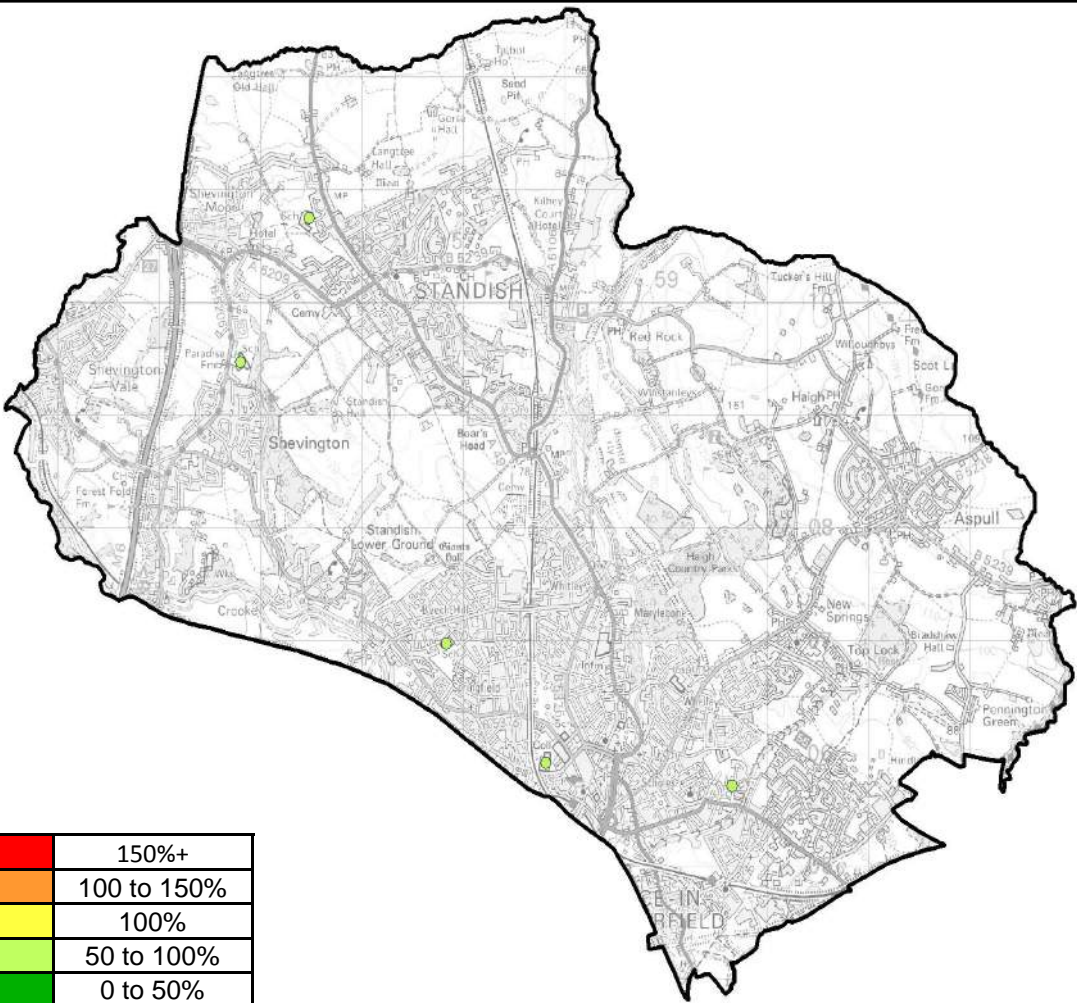
Breakdown of Primary School OFSTED Ratings by Locality



Overview

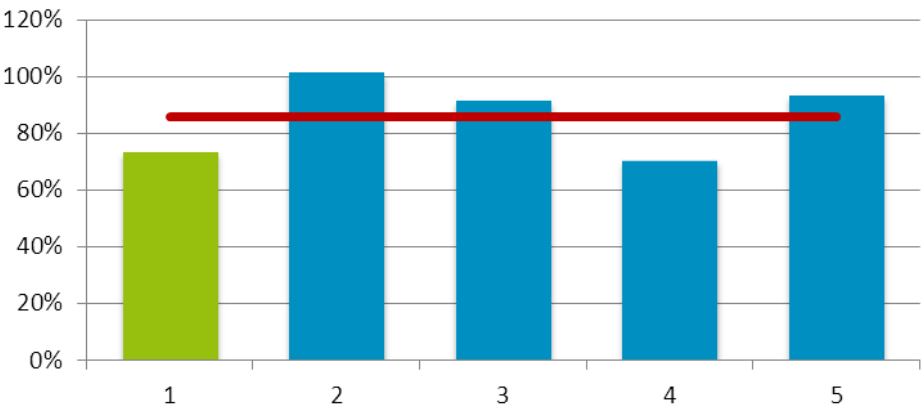
Locality 1 has 83% of schools rated good or outstanding.
Of the 24 schools in the locality, 5 are rated as outstanding, 15 as good and 4 as requiring improvement.

Demand for School Places (Secondary)



Locality Rank: 2nd

Number of 1st Preferences by Available Places in Localities



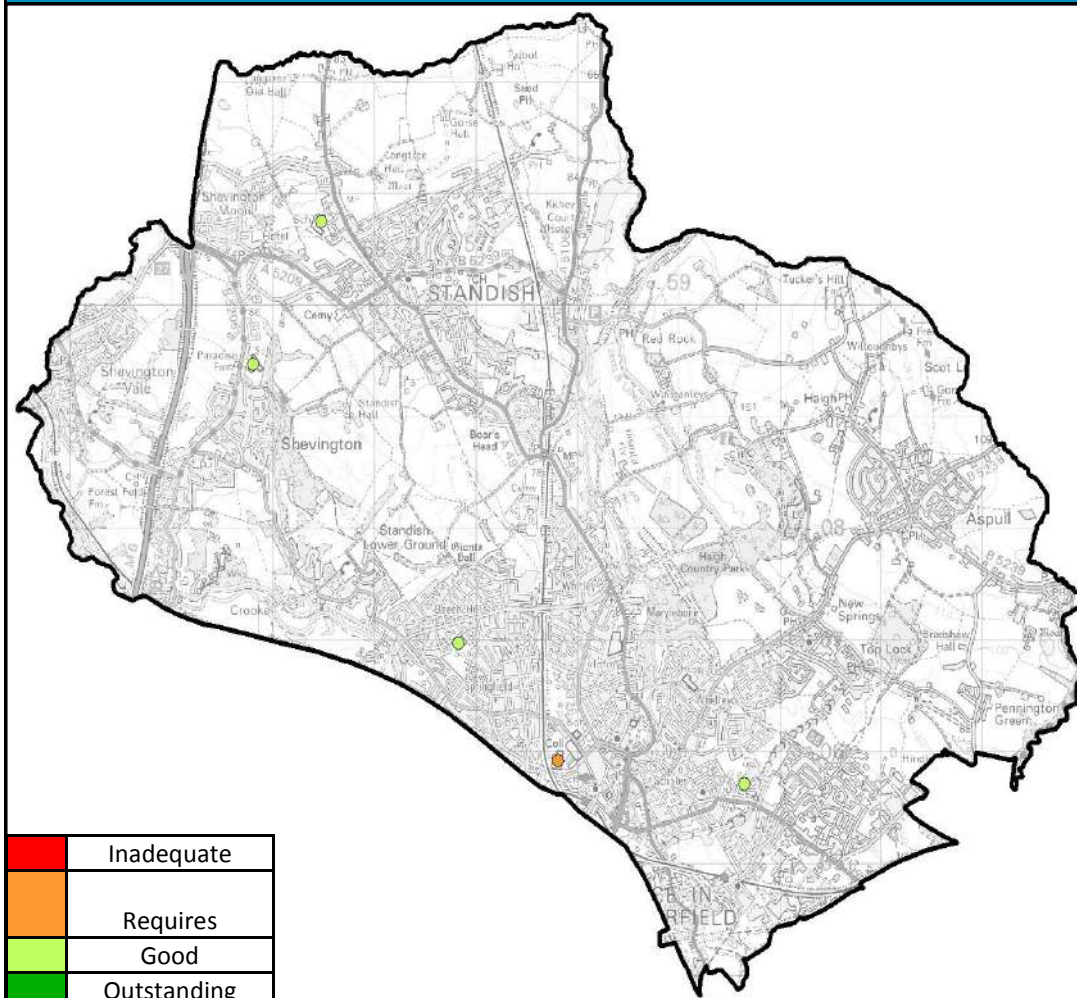
Overview

Locality 1 has the second lowest rate of demand for secondary school places of all Wigan borough’s localities.

Between Locality 1’s five secondary schools, there are 1026 admission places available but only 750 children have one of the schools as their first choice, a rate of 73%.

Standish High School has the highest rate with 90.8% while Shevington High School has the lowest with 57.9%.

School Ofsted Ratings (Secondary)



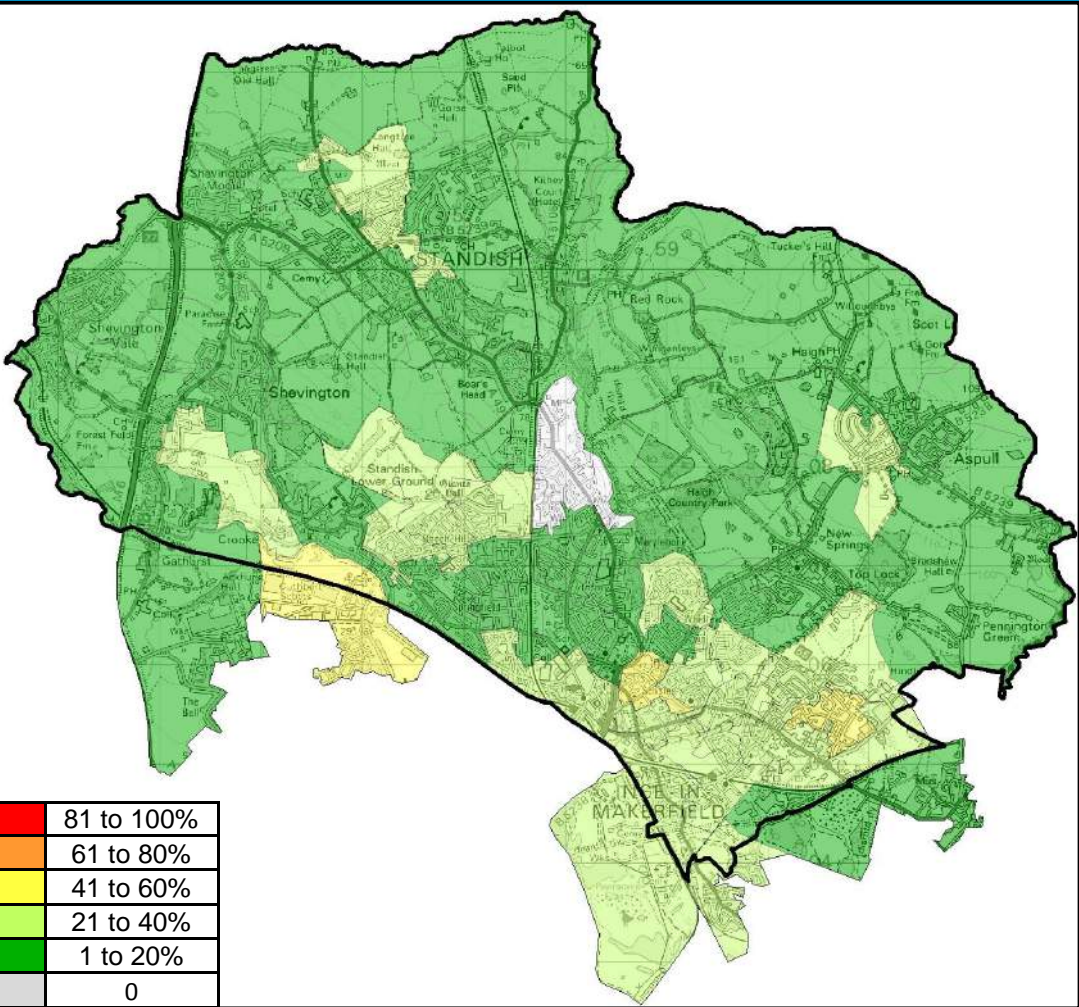
	Outstanding	Good	Requires Improvement	Inadequate	Total
Locality 1		4	1		5
Locality 2	2		1		3
Locality 3		3	1		4
Locality 4		3	1		4
Locality 5	2				2
Grand Total	4	10	4		18

Overview

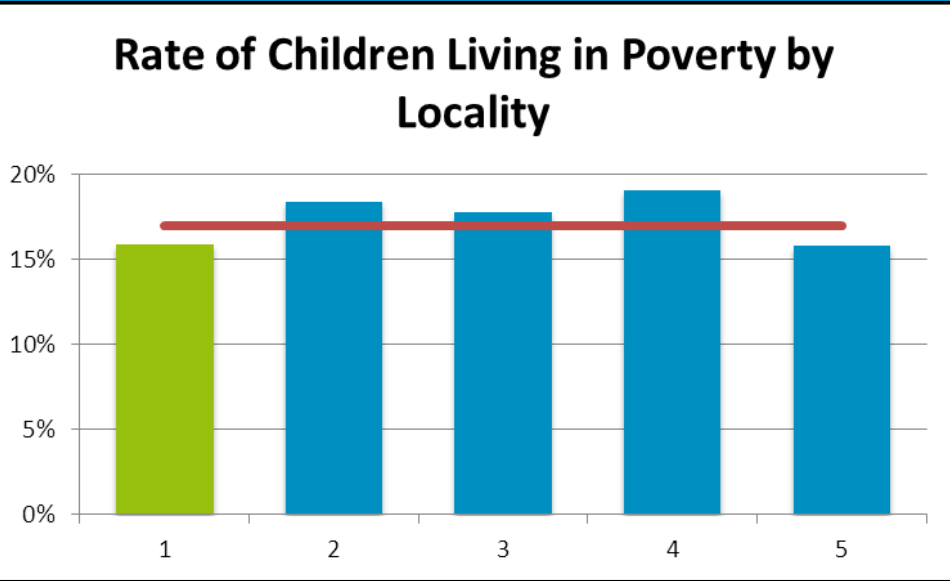
Locality 1 has 4 schools with OFSTED rating of Good. These are: Rose Bridge High School, Shevington High School, Standish Community High School and St. John Fisher Catholic School.

The other school in the locality, The Deanery Church of England High School and Sixth Form College has a rating of Requires Improvement.

Children Living in Poverty



Locality Rank: 4th
Highest Concentration: Marsh Green East

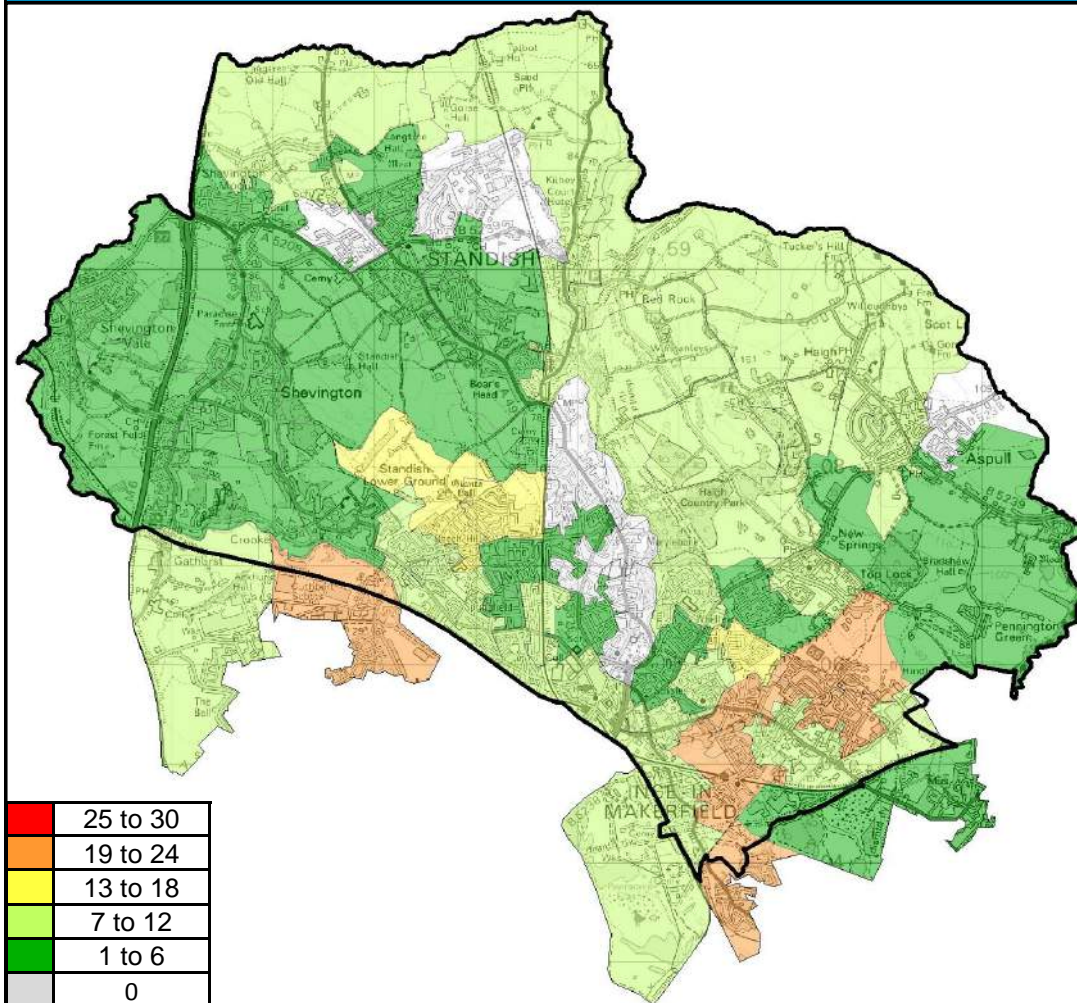


Overview

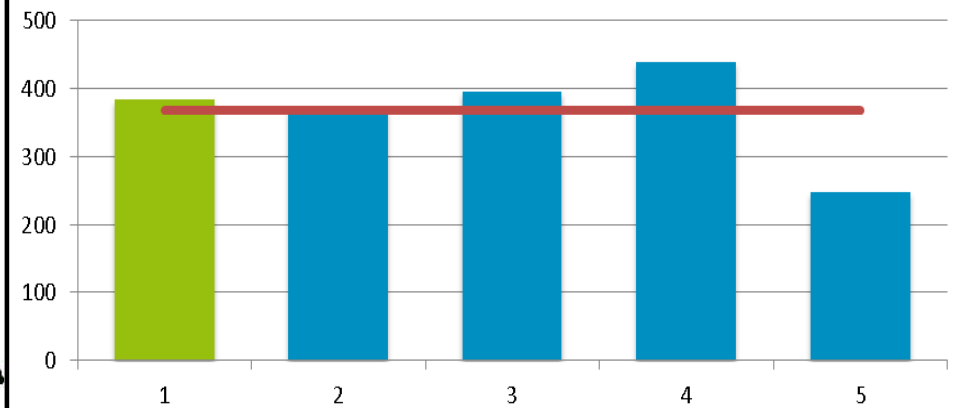
Locality 1 has the second lowest rate of children living in poverty of the Borough's localities with 16%. The highest concentration within locality 1 is Marsh Green East with just over 50% followed by Scholes with nearly 44%

The average across all localities is 17%.

Children 0-16 Claiming DLA



Number of Children Aged 0-16 Claiming DLA by Locality



Overview

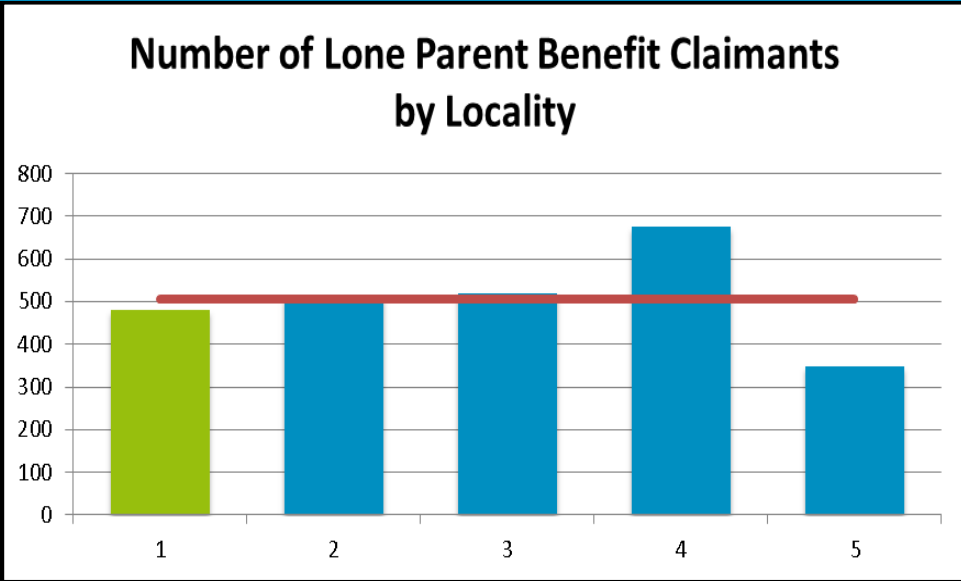
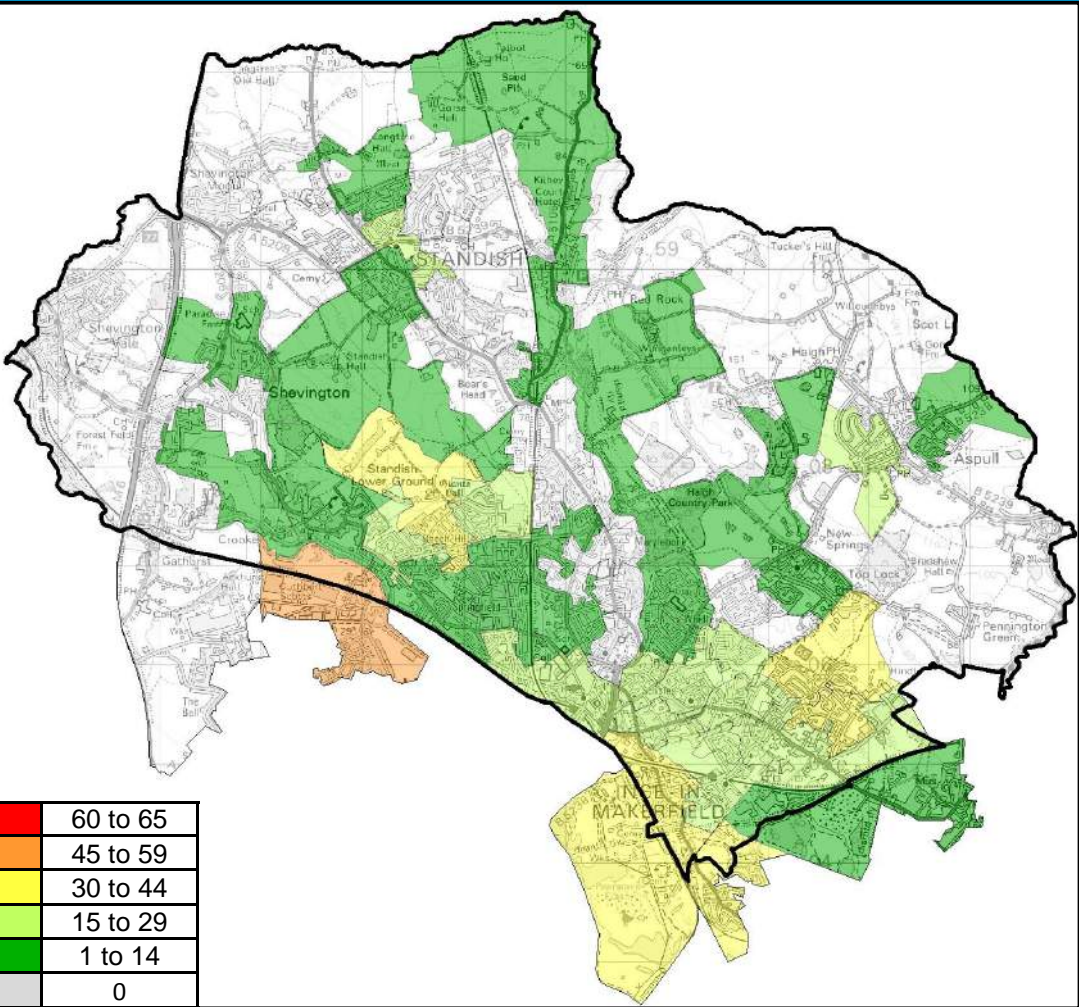
Locality 1 has the third highest number of Children Aged 0-16 Claiming DLA of all Wigan Council's localities with 385 identified. The highest concentrations of Children Aged 0-16 Claiming DLA are within the localities of Belle Green / Higher Ince, Rose Bridge and Higher Ince.

The average number of Children Aged 0-16 Claiming DLA of all Wigan Council's localities is 368.

Locality Rank: 3rd

Highest Concentration: 3 LSOAs

Lone Parent Benefit



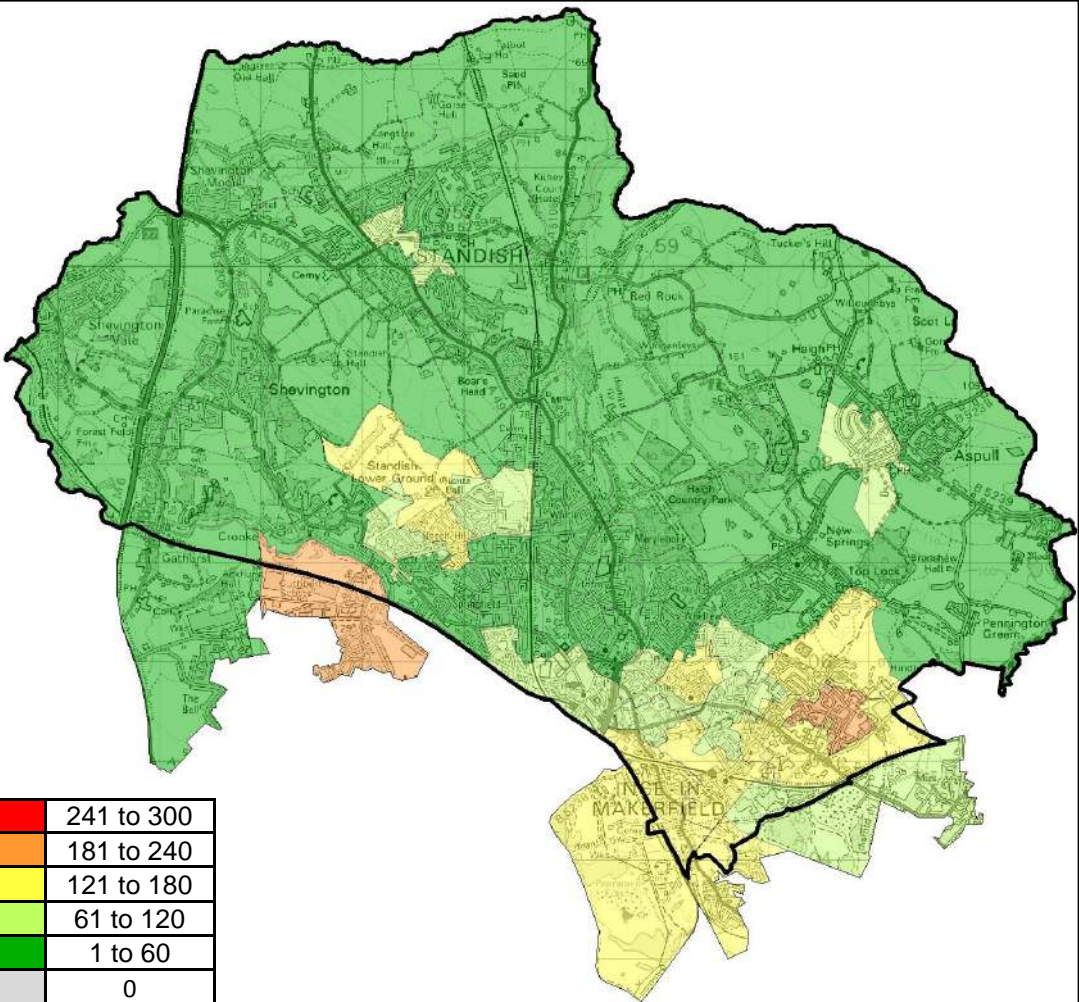
Overview

Locality 1 has the second lowest of number of lone parent benefit claimants of all Wigan Council's localities with 479 identified. The highest concentration of lone parent benefit claimants within locality 1 is 45 claimants for Marsh Green East.

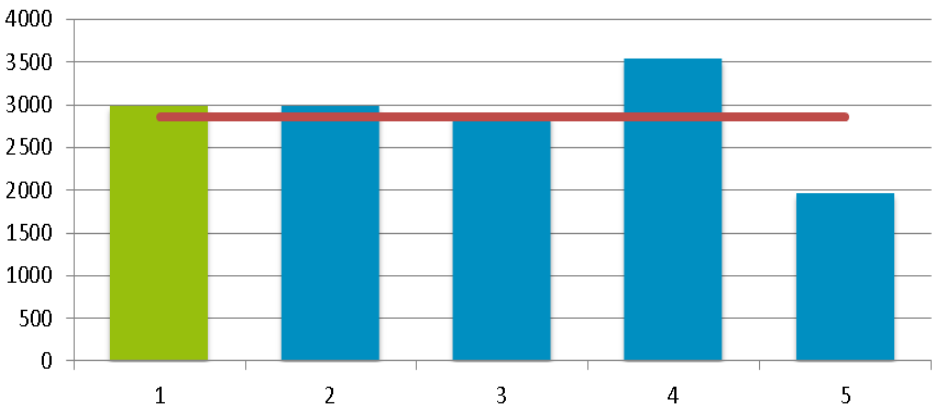
The average number of lone parent benefit claimants for all of Wigan Council's localities is 506 claimants.

Locality Rank: 4th
Highest Concentration: Marsh Green East

Children Living in Out of Work Benefit Households



Number of Children Living in Out of Work Benefit Households by Locality

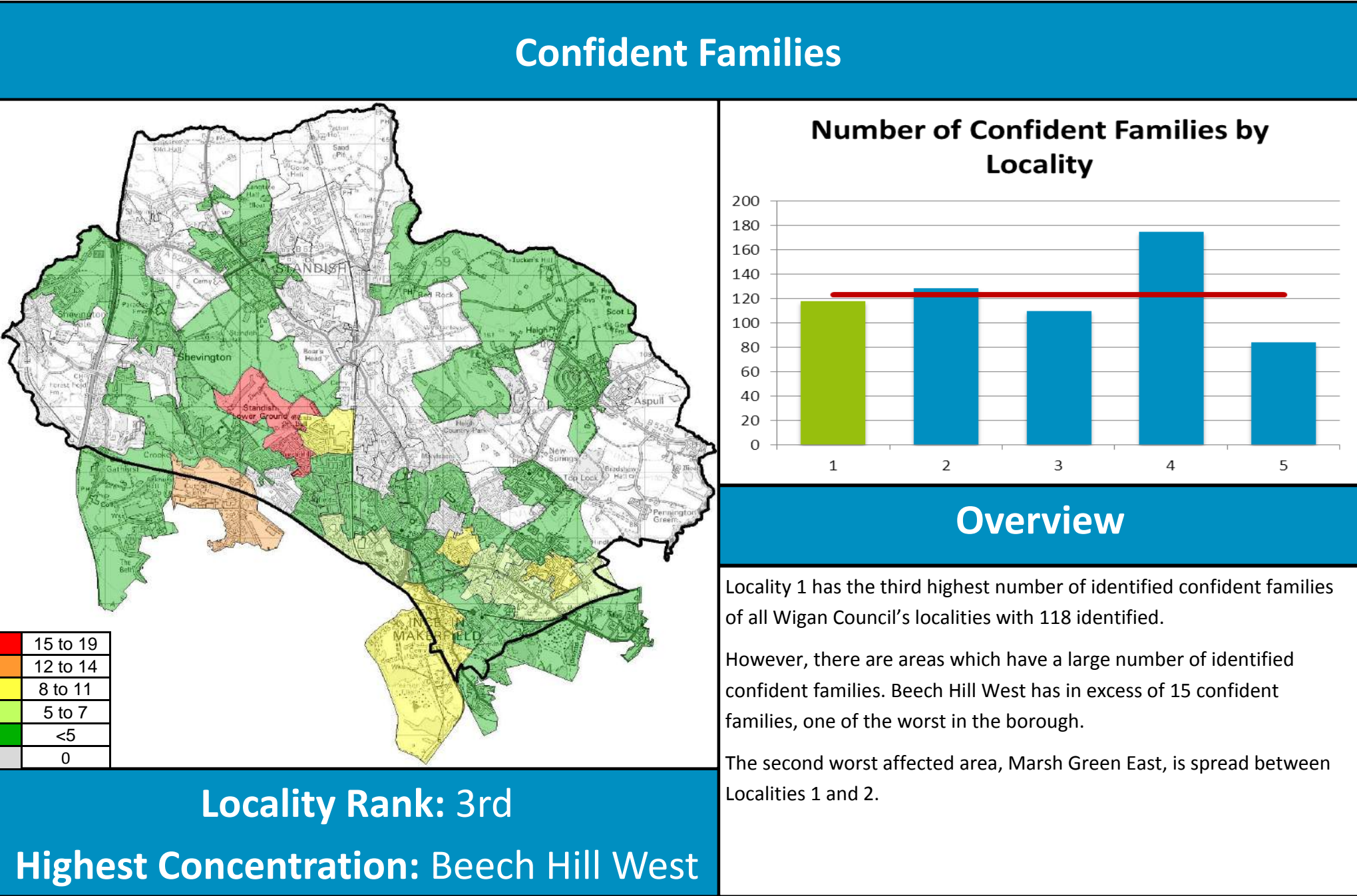


Overview

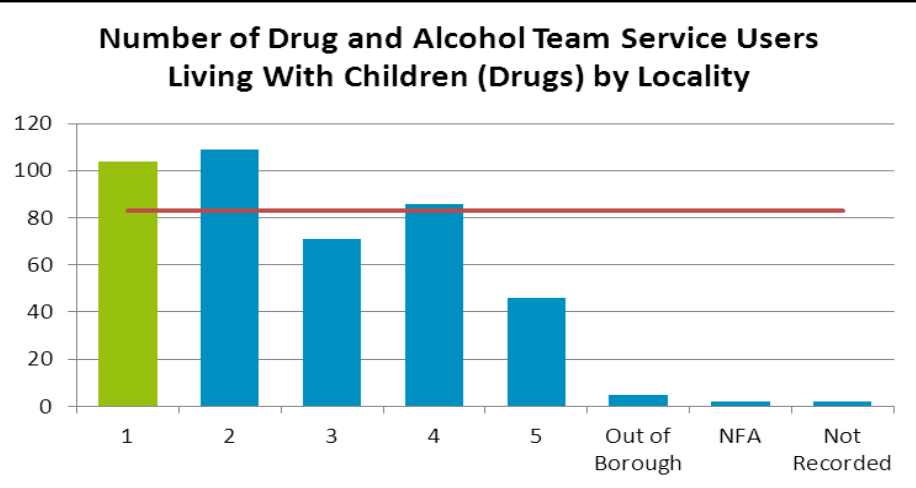
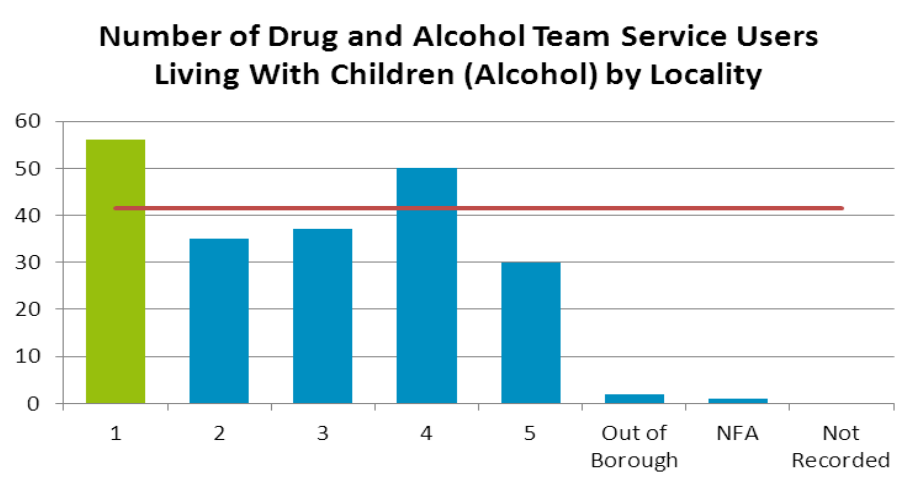
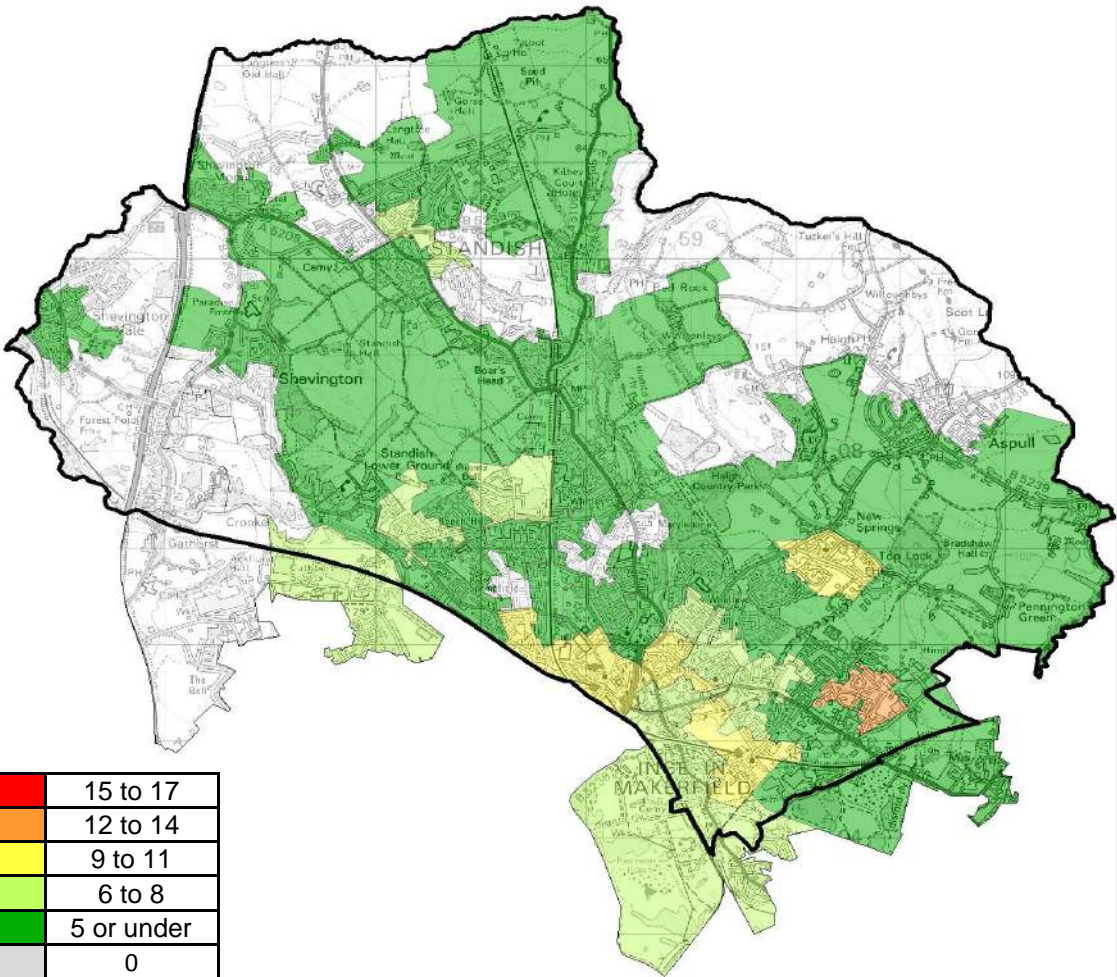
Locality 1 has the second highest number of children living in out of work benefit households by locality of all Wigan Council's localities with 2980 identified. The highest concentration of children living in out of work benefit households is in Marsh Green East with 230.

The average number of children living in out of work benefit households across all Wigan Council's localities is 2864 children.

Locality Rank: 2nd*
Highest Concentration: Marsh Green East



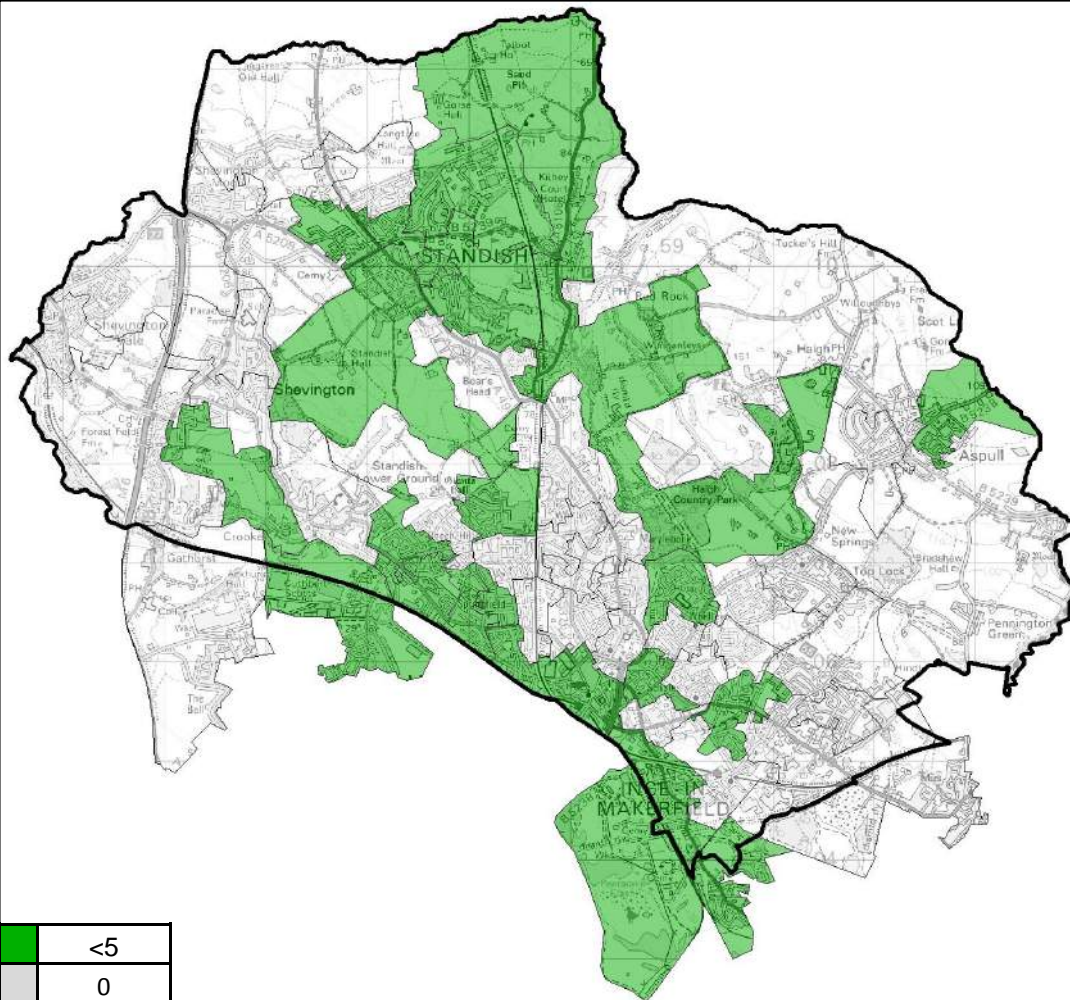
Drug and Alcohol Service Users



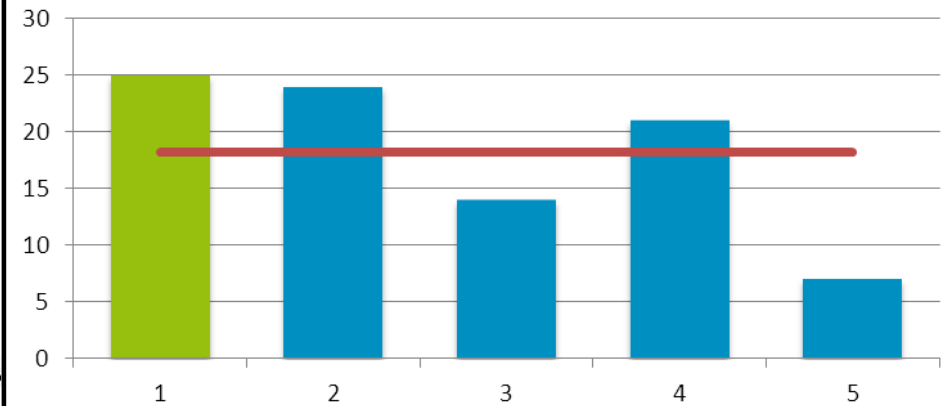
Overview Locality 1 has the highest overall number of drug and alcohol service team users who live with children of all Wigan Borough’s 5 localities. Locality 1 has the highest number of service users for alcohol and the second highest number of users for drugs. Higher Ince has the highest number of Drug and Alcohol Team Service users that live with children in locality 1.

Locality Rank: 1st
Highest Concentration: Higher Ince

Entrants to the Youth Justice System



Entrants to Youth Justice System by Locality



Overview

Locality 1 had the highest number of entrants to the youth justice system with 25 entrants in 2013, marginally higher than Locality 2 with 24.

The borough average is 18 per locality.

Locality Rank: 1st

Highest Concentration: Springfield/ Wigan Town Centre

Matrix

LSOA Code	LSOA Name	CAF assessments	Children Social Care	CPP	Gateway referrals	Looked after children	A & E attendance	Alcohol specific hospital stay	Child obesity (Reception)	Child obesity (Year 6)	Children with long term condition	Non elective admissions for intentional/unintentional	Non elective admissions for under 5's	Out patients appointments	GLD at EYFSP	Attainment level at KS2	Attainment level at KS4	Free school meals	NEET	SEN (Primary)	SEN (Secondary)	Unauthorised absence	BME	Child poverty	Children claiming DLA	Lone Parent Benefit	Out of work benefits	Confident Families	DAAT Users	Youth Justice System
E01006217	Spring View																													
E01006229	Green Lane / Standish Centre																													
E01006230	Ashfield																													
E01006231	Haigh																													
E01006232	Chorley Road																													
E01006233	Wigan Road																													
E01006234	Lincoln Drive																													
E01006235	Holly Road Estate																													
E01006236	Pennington Green / Bolton Road																													
E01006237	Bradley Hall																													
E01006238	Standish Centre																													
E01006253	Beech Hill / Giants Hall Road																													
E01006254	Beech Hill West																													
E01006255	Gidlow North																													
E01006256	Woodhouse Lane																													
E01006257	Pagefield																													
E01006258	Springfield																													
E01006259	Standish Lower Ground																													

Matrix

LSOA Code	LSOA Name	CAF assessments	Children Social Care	CPP	Gateway referrals	Looked after children	A & E attendance	Alcohol specific hospital stay	Child obesity (Reception)	Child obesity (Year 6)	Children with long term condition	Non elective admissions for intentional/unintentional	Non elective admissions for under 5's	Out patients appointments	GLD at EYFSP	Attainment level at KS2	Attainment level at KS4	Free school meals	NEET	SEN (Primary)	SEN (Secondary)	Unauthorised absence	BME	Child poverty	Lone Parent Benefit	Out of work benefits	Confident Families	DAAT Users	Youth Justice System
E01006260	Beech Hill East																												
E01006272	Hindley Centre																												
E01006305	Higher Ince																												
E01006306	Darlington Street East																												
E01006307	Rose Bridge																												
E01006308	Higher Ince / Manchester Road																												
E01006309	Lower Ince / Ince Green Lane																												
E01006310	Lower Ince																												
E01006311	Belle Green / Higher Ince																												
E01006312	Shevington																												
E01006313	Shevington / Crooke																												
E01006314	New Miles Lane																												
E01006315	Pepper Lane																												
E01006316	Shevington Moor																												
E01006317	Standish North																												
E01006318	Shevington North																												
E01006319	Woodhurst Drive																												
E01006320	Shevington Vale																												

Matrix

LSOA Code	LSOA Name	CAF assessments	Children Social Care	CPP	Gateway referrals	Looked after children	A & E attendance	Alcohol specific hospital stay	Child obesity (Reception)	Child obesity (Year 6)	Children with long term condition	Non elective admissions for intentional/unintentional	Non elective admissions for under 5's	Out patients appointments	GLD at EYFSP	Attainment level at KS2	Attainment level at KS4	Free school meals	NEET	SEN (Primary)	SEN (Secondary)	Unauthorised absence	BME	Child poverty	Lone Parent Benefit	Out of work benefits	Confident Families	DAAT Users	Youth Justice System
E01006321	Appley Bridge																												
E01006361	Marsh Green East																												
E01006369	Springfield / Wigan Town Centre																												
E01006370	Swinley East																												
E01006371	Gidlow																												
E01006372	Whitley / Wigan Lane																												
E01006373	Whitley																												
E01006374	Mesnes Road																												
E01006375	Swinley West																												
E01006386	Scholes																												
E01006387	Longshoot																												
E01006388	Top Lock / New Springs																												
E01006389	Whelley																												
E01006390	Bottling Wood																												
E01006391	Ashbourne Avenue / Whelley																												
E01006392	Scholes / Birkett Bank																												
E01006396	Kitt Green North																												

Reference Map

	LSOA Name
1	Spring View
2	Green Lane / Standish Centre
3	Ashfield
4	Haigh
5	Chorley Road
6	Wigan Road
7	Lincoln Drive
8	Holly Road Estate
9	Pennington Green / Bolton Road
10	Bradley Hall
11	Standish Centre
12	Beech Hill / Giants Hall Road
13	Beech Hill West
14	Gidlow North
15	Woodhouse Lane
16	Pagefield
17	Springfield
18	Standish Lower Ground
19	Beech Hill East
20	Hindley Centre
21	Higher Ince
22	Darlington Street East
23	Rose Bridge
24	Higher Ince / Manchester
25	Lower Ince / Ince Green Lane
26	Lower Ince



27	Belle Green / Higher Ince
28	Shevington
29	Shevington / Crooke
30	New Miles Lane
31	Pepper Lane
32	Shevington Moor
33	Standish North
34	Shevington North
35	Woodhurst Drive
36	Shevington Vale
37	Appley Bridge
38	Marsh Green East
39	Springfield / Wigan Town Centre
40	Swinley East
41	Gidlow
42	Whitley / Wigan Lane
43	Whitley
44	Mesnes Road
45	Swinley West
46	Scholes
47	Longshoot
48	Top Lock / New Springs
49	Whelley
50	Bottling Wood
51	Ashbourne Avenue / Whelley
52	Scholes / Birkett Bank
53	Kitt Green North

Notes on Datasets

<u>Dataset</u>	<u>Timeframe</u>
Population	Mid-Year Estimates 2012
BME	2011
CAF Assessments	2013
Referrals to Children's Social Care	2013
Child Protection Plans	2013/14
Gateway Referrals	2013
Looked After Children	2013/14
A&E Attendances for Under 5s	2013/14
Alcohol Specific Hospital Stays for Under 18s	2013/14
Child Obesity	2011/12
Non-Elective Admissions of Children with a Long-Term Condition	2013/14
Non-Elective Admissions for Under 5s	2013/14
Non-Elective Activity for Intentional and Unintentional Injuries	2013/14
Outpatient Appointments for Under 5s	2013/14
EYFS, KS2 & KS4 Attainment Data	2012/13
Eligibility for Free School Meals	As at January 2014
NEET	As at December 2013
Children with a level of SEN	As at January 2014
Children with 15%+ Unauthorised absence	2012/13
Demand for School Places	2012/13
School Ofsted Ratings	As at May 2014
Children Living in Poverty	2011
Children Claiming DLA	As at August 2013
Lone Parent Benefit	As at August 2013
Children Living in Out of Work Benefit Households	As at August 2013
Confident Families	As at January 2014
Drug and Alcohol Service Users	As at September 2013
Entrants to the Youth Justice System	2013