

# CHILDREN AND YOUNG PEOPLE'S SERVICES

## INFORMATION BULLETIN

December 2005

- The first Annual Performance Assessment for Children and Young People's Services took place this year. We are pleased to announce that we scored the following out of a possible 4 (the scale is 1 - lowest to 4 - highest).

Children's Social Care	3
Local Education Authority	3
Children and Young People's Services - joint score	3
Prospects for the future	3

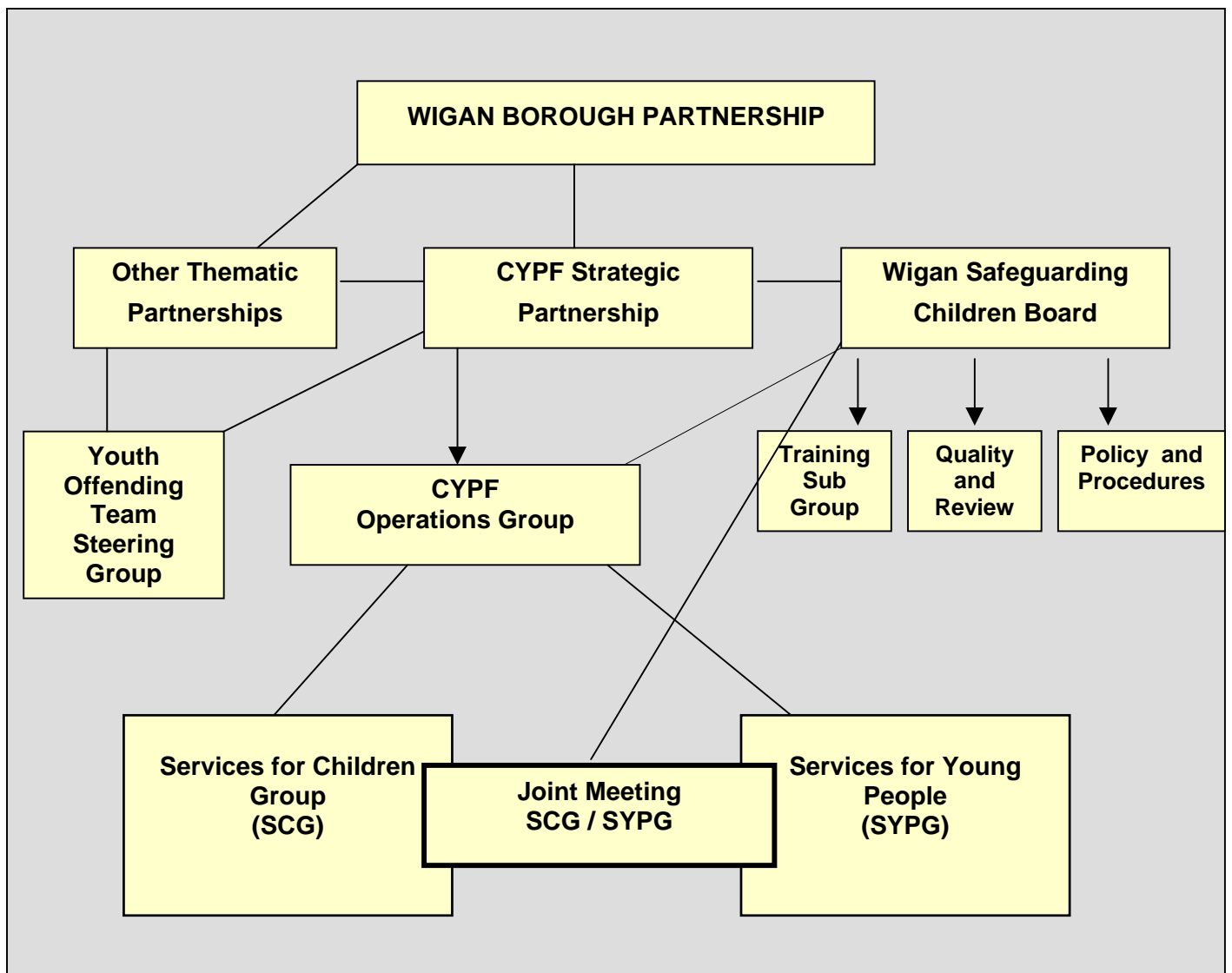
This gives us a result of 'serving most children well in Wigan with promising prospects for the future'. Congratulations to everyone for this very pleasing outcome.

It gives Children and Young People's Services an excellent platform on which to build its new integrated services.

### □ **CHILDREN AND YOUNG PEOPLE'S STRATEGIC PARTNERSHIP**

A new operational structure bringing together the work of Wigan Borough Partnership; the Children and Young People's Strategic Partnership, and the work of the new Wigan Safeguarding Children Board has now been agreed (see diagram).

This will ensure that all Council services, the work of other partner organisations and the Community and Voluntary Sector are joined up strategically to best meet the needs of all children and young people in the Borough.



❑ **APPOINTMENT OF NEW ASSISTANT DIRECTOR - LEARNING AND ATTAINMENT**

Richard Powell has been appointed as Assistant Director Learning and Attainment. Richard will start with us next year. Richard currently works for Liverpool LEA as a Senior Adviser. Many people will know Richard from his previous time in Wigan as a headteacher at Orrell Holgate Primary School and as an Adviser with the LEA.

❑ **ADULT, COMMUNITY AND FAMILY LEARNING SERVICE**

**ADULT LEARNING INSPECTION, 21 OCTOBER 2005**

THE SERVICE

- The service does not deliver any learning provision directly - Its function is to develop, co-ordinate, fund and quality assure learning provision that is designed to

engage, enthuse and enable 'new', often 'hard to reach', learners. The service works closely with partners to deliver first steps and personal development 'tasters' often in deprived communities.

- Our core partners for the delivery of learning activities are:

Deanery High School

Hesketh Fletcher High School

Lowton High School

Orrell Community Education Centre at Abraham Guest High School

Tyldesley Community Education Centre

Westleigh High School

Wigan and Leigh College

Wigan Leisure and Culture Trust Library Service

Adactus Housing Group

Alcohol and Drug Services

Dorset Road Neighbourhood Learning Centre

Higher Folds Community Centre

Marsh Green Community Centre

Norley Hall Community Centre

Platt Bridge Community Centre

Worsley Mesnes Community Centre

- The service works in close partnership with Primary Schools, Sure Start Children's Centre and Community venues throughout the Borough to provide Family Learning. Activities help parents, carers and wider family members understand what and how their children are learning in order to support them to reach their potential.
- The service works, also, with Working Wonders (Education) Ltd to provide support to those with dyslexia or needing to improve their English language, literacy or numeracy skills.

## THE INSPECTION RESULTS

- Grades 1 x Grade 1 Outstanding  
7 x Grade 2 Good  
1 x Grade 3 Satisfactory
- The overall effectiveness of the provision is good. Leadership and management is good, equality of opportunity is outstanding and quality improvement is good.
- The service has well-articulated and clear strategic priorities linked to the Community Plan and the Council's Corporate Plan as well as local LSC priorities

- The service has very strong partnerships. The range of partners is extensive and reflects the providers' focus on reaching particularly deprived communities. The partners complement the service particularly well, with the service supporting and facilitating first rung learning and partners often offering the next step progression routes.
- The adult and community learning provision is managed well. A small but highly effective team is funded by the local education authority and the LSC. Resources are used well to their full potential in order to meet strategic priorities. The service makes very effective use of partners' strengths and skills to add value to its own limited resources. The providers' managers use partners' locations and networks to good effect.
- The service uses a range of outstanding strategies and processes to involve 'hard to reach' learners in adult learning programmes. These learning programmes link up very effectively with other schemes such as the Extended Schools and Sure Start programmes. The provider's strategic aims identify and promote programmes specifically aimed at attracting and involving learners from the communities recognised as being the hardest to reach.
- The provider has good systems to support quality improvements. A good system for observation of teaching and learning is in place and is supported by a full set of quality improvement policies and procedures. The policies and procedures cover all key areas of learning, including information advice and guidance, induction, individual learning plans and initial assessments.
- Learning providers use an imaginative range of 'non-threatening' activities in accessible venue in the communities. These attract a wide range of learners.
- A good range of provision meets learners' needs and aspirations. Learners feel confident enough to progress from their first steps and taster courses to other provision.
- Standards of teaching and learning in most programmes are good. Tutors are very effective at motivating and maintaining learners' interest. Tutors in many classes use a good range of teaching styles and strategies to meet learners' diverse needs, including appropriate methods to integrate learners who have disabilities.
- The standard of learners' work in most programmes is good and many learners make good progress within a few weeks of beginning their courses. Learners are challenged by the high expectations of their tutors and often exceed their own learning goals. Learners attend regularly and show considerable commitment and motivation

- Learners quickly build up the confidence to take their skills back to their families and into the community. They develop self-belief, progressing to further learning. There are some very good individual progressions by learners.

## □ UPDATE ON EARLY YEARS / SURE START INITIATIVES

### 10 Year Strategy - Choice for Parents Best Start for Children

Planning for the delivery of the 10-Year Strategy in Wigan continues and will form a key strand in the new Children and Young Peoples Plan for the Borough.

Targets include the creation of further childcare places, extending the early years entitlement for 3 and 4-year olds, more comprehensive information services for parents and carers, and more good quality integrated services for children under 5 and their families.

A comprehensive audit, including a consultation with parents is under way to identify the range and level of childcare services needed in the Borough. A new Childcare Place Creation Plan will be in place ready for the 2006-2008 development programme.

### Children's Centres

Children's Centres are the mechanism through which good quality integrated services will be delivered each providing a range of services to meet the needs of young children and their families, including

- Early education integrated with day care
- Family support and parental outreach
- Child and family health services
- Links with schools and Children's Information Service
- Links with Job Centre Plus

The Government has set a target of a Children's Centre in every community. Wigan is currently working hard to meet the Phase 1 target of eight centres, which include some very exciting partnership co-location projects such as Westfield, Platt Bridge and Meadowbank. Both local programmes are to become Children Centres as are the two Early Excellence Centres of Douglas Valley and Hope school.

The initial planning for Phase 2 of the Children's Centre Plan is well underway and a recent cabinet report endorsed the sites for the next nine centres. They are:-

#### Area 1 - East

- Leigh Central - linking in with the Excellence Cluster
- St Johns Mosley Common

- Higher Folds / St Gabriel's / Agape Family Centre - a networked centre involving all key partners.

#### Area 2 - West

- Shevington Community Primary
- Ince CE
- Sacred Heart Catholic Primary School (Springfield Road) and Beech Hill Primary - a networked centre that will make use of surplus space at Beech Hill Community Primary.

#### Area 3 - Central

- St Thomas's - Ashton - partnership project with the YMCA
- Bryn St Peters
- Golborne County Primary

### Early Support and Safeguarding

Wigan is embarking on an ambitious area of work called the Early Support Programme (ESP). The programme was launched by the Government back in spring 2004 and is the subject of a nation wide development campaign to support young children with complex needs. It was developed in recognition of the fact that some children prior to statutory school age, and in particular children 0-3, were not having their needs met in a co-ordinated multi-agency way. As a result the opportunity for early diagnosis and intervention was being missed. It also recognises the fact that if children and families are welcomed in to mainstream inclusive setting / services at an early age they are more likely to go on accessing mainstream services later and throughout life.

The Strategy and Action Plan has been developed in conjunction with parents and practitioners on the Children's Sub Group of the Learning Disability Partnership and forms a part of the LDPS Objective 1 Framework - Maximising Opportunities for Disabled Children.

### Impact - Foundation Stage Outcomes

As with all children and young people's services it is the 'outcomes' and 'impact' on children that provides the driver for all our work. We are extremely pleased that in the Foundation Stage Profile, the assessment framework for children's development at the end of the Foundation Stage period, is above national averages across all areas of learning.

## □ RECLAIMING THE LAND - BUSINESS AS USUAL FOR YOT

Wigan Council's Environmental Planning Service manages the land at Leigh Business Park, they called in the YOT in response to the residents' concerns.



***Before and After:*** The land at Leigh Business Park has undergone a remarkable transformation thanks to Wigan's YOT.

The YOT team works with young offenders who have been given community-based sentences on environmental improvement projects across the borough.

Reparation Project Worker Derek Lomas led a team of supervisors and young people in a bid to reclaim the land.

In two weeks Derek and the team filled 10 skips with household rubbish, concrete, oil and paint cans, metal, beds.

To the delight of the residents, the land has been completely stripped which will allow grass to grow back.

The second phase of the project will see the area be transformed into a haven for wildlife with the planned planting of 800 trees in October.

"The team will now maintain the area and encourage local people to take responsibility and keep the land rubbish free."

Cath added: "Local residents have given their support and thanks to the team and if they witness any dumping in the future they will contact the council's Environmental Planning Service immediately."

For more information contact Wigan YOT Reparation Co-ordinator Cath Lomas on 01942 487200.

### What A 'Dam' Good Job!



An ancient Wigan woodland is being brought back to life thanks to the hard work and dedication of some of the borough's young citizens who are determined to make a difference.

The green area surrounding historic Dam House on Astley Hall Drive in Astley, can trace its roots back to the 17<sup>th</sup> century.

*To The Manor Born:* Astley's historic Dam House.

In recent years the house has undergone an impressive renovation.

The one-time Astley manor house is now open to a whole host of community uses. But the custodians of the historic building, the Dam House Trustees, decided it was now time for the grounds to get a makeover.

To this end the trustees contacted Wigan's Youth Offending Team (YOT) requesting it to undertake woodland work within the grounds.

The YOT has a proven record of transforming run-down and overgrown areas into community assets and places of natural beauty.

The YOT's team of highly skilled reparation officers and conservationists works with young offenders who have been given community-based penalties and puts them to work to benefit their communities.

After accepting the trustees' challenge the team set out on an initial two weeks of work to remove unwanted shrubs and bushes.

The YOT undertook seven weeks of work, including the removal of hazardous trees, clearing overgrown bushes, removing stumps and strimming a large orchard area. Large logs from the woodland area were also used to create a barrier around the car park.



*Good Wood:* Work in progress on the Dam House woodland.

After this stage was complete the trustees met with the team and officers from the Red Rose Forest project to discuss the progress.

YOT Reparation Co-ordinator Cath Lomas said: "The outcome of this meeting was very positive and now the trustees can make further funding bids to complete the work on this ancient woodland.

"Each young person who has worked on the project has received an individual letter of thanks that they can be proud of and many members of the public who visit the site have commented on the excellent work of the team."

Cath added: "The work undertaken by young people on community orders gives them a sense of pride, ownership and achievement as well as providing equally important benefits the community

"The team will be returning to complete phase 2 of the work next year which will include resurfacing the large car park area and clearing ancient ponds."

## □ **EQUALITY AND DIVERSITY**

We have recently started work on initiatives to tackle homophobic bullying, and on monitoring the diversity of school workforce, with a view to widening recruitment in the future.

To continue fulfilling our legal duty to promote race equality, we have undertaken 9 governor training sessions in collaboration with Wigan and Leigh United Against Racism, followed by a special Race Equality of The Wigan Governor magazine posted to all governors at home. We have supported the Kick Racism Out of Football campaign with Wigan Leisure and Culture Trust and Wigan Athletic, including producing a curriculum pack for schools.

We are also planning materials for schools and a conference in March 2006 on the global dimension of the curriculum, following a study visit by 13 local teachers to township schools in South Africa. This initiative is intended to help children and young people widen their horizons and achieve a global view of priorities such as: Being Healthy (e.g. HIV or influenza), Staying Safe (e.g. concerns about war or terrorism), Enjoying and Achieving (e.g. learning from a world beyond Wigan Borough), Making a Positive Contribution (e.g. as a citizen of the world, not just Britain) and Economic Well-being (e.g. globalisation).

## **WIGAN PERSONAL DEVELOPMENT CURRICULUM PILOT PROJECT**

Within secondary schools, The Personal Development Curriculum (PDC) is a relatively new term used to encompass the following areas of the curriculum: Careers and Education Guidance (CEG), Citizenship, Enterprise, PSHE and Work Related Learning (WRL). Additionally, the moves to Children's Services in Wigan means that schools will have to align their provision with the Every Child Matters (ECM) framework.

A working group (made up of teachers from schools where good practice within the PDC was identified as well as representatives from Wigan CYPs) was established in Autumn 2004. It created the Wigan PDC File, which was launched in July to all our secondary schools. The file rationalises the various objectives and outcomes, offers a suggested mode for delivery, provides an audit tool and describes good practice.

Following the success of the launch, ten schools are now involved in the second phase of the pilot (funded by the Wigan PSHEC team), with the aim of developing the Wigan PDC file further. The success of the work has led to involvement by QCA (Qualifications and Curriculum Authority) who are keen to highlight our work nationally.

Gerald Meehan  
Deputy Director of Children and Young People Services