

What action is needed?

These 4 key priorities will be the big issues for the next 18 years or more. They will require long term commitment and investment – together with the support of local people and a huge range of services and organisations.

In order to give our work a clear focus there will be a regular programme of 3 year **action plans**. These will set out what is going to happen in practical terms to help move towards long term ambitions. The current action plan is called the **Local Area Agreement**. The plan will concentrate on ‘adding life to people’s years’ as well as ‘years to people’s lives’.

The action plans are led by one of the new delivery partnerships:

Children, Young People and Families

Economy, Environment, Culture and Housing

Building Stronger Communities

Adults, Health & Well being

Making the most of our opportunities: Wigan’s Place in the North West region

Wigan Borough does not exist in a bubble. It offers opportunities for people to work, learn, shop and enjoy themselves, whether they live here or elsewhere. But there are wider opportunities outside of the borough that people can benefit from. The borough is very well located for people to do this, mid-way between the two largest cities in the region-Manchester and Liverpool and on main north-south routes through the region. between Preston and Warrington.

But while Wigan residents need to be able to take advantage of

these opportunities if they want to , we need to increase the range and quality of opportunities for people closer to home. To achieve this we need to to “punch our weight” in the region.

working **together** as one borough we can achieve more.

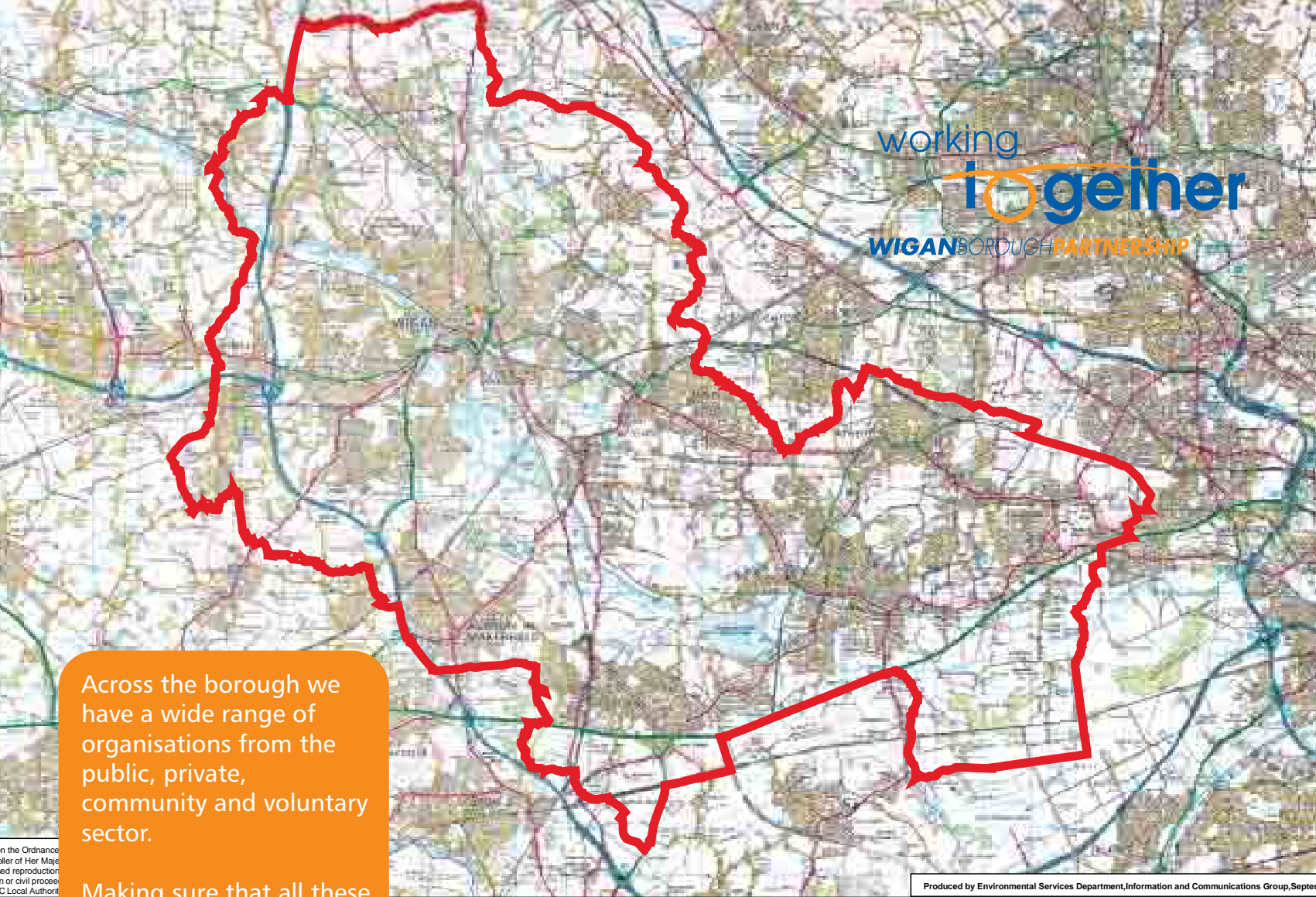
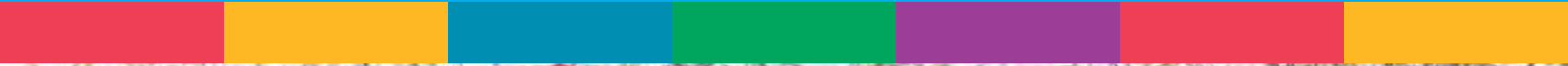
This strategy recognises the challenge and the opportunity for the borough by playing a key role in the development of the region. It will bring together local environment, economic, housing, transport and planning goals into



a single overall strategy – linking the aspirations of the borough to the needs of the region as a whole.If Wigan is to secure inward investment, improvements to transport infrastructure as well as more affordable new housing – then it is vital that the borough helps to lead the region as a whole.

This action plan is published and updated on a regular basis. Go to www.wigan.gov.uk/localareaagreement

How will we work to



Across the borough we have a wide range of organisations from the public, private, community and voluntary sector.

Making sure that all these organisations work together for the benefit of local people is vital to future success.

The COMPACT sets out the terms on which we expect partners and organisations to work together and is a key element of the Community Strategy

- Work collaboratively to help improve services
- Maintain high standards in partnership working
- Actively encourage the participation of the voluntary/ community sector issues
- Implement policies that promote best practice and equal rights in activities
- Respect and value different roles and contributions
- Promote good relationships between the Council, public services, voluntary, community and private sectors
- Ensure consistency and fairness in funding community and voluntary organisations



Commitments to action

Greater Manchester Police

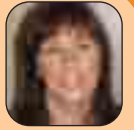
One of the key roles for the Police is to listen to the views of local people and respond to the issues they raise. We're committed to this work in Wigan so that people can feel safer whilst our communities grow stronger.



Lee Bruckshaw, Divisional Commander, Wigan

Learning and Skills Council

The Learning and Skills Council supports the community strategy and strives to procure good quality education and training provision that will assist local people in obtaining skills that will enable them to actively contribute to the economic and social well-being of their communities.



Carol Bluer, Partnership Director, Wigan

Groundwork Lancashire West & Wigan

Groundwork is committed to working with and for local communities in Wigan. Through our services we will aim to deliver the aspirations of local people and contribute to the delivery of the Community Strategy. We will focus on changing places - changing lives and constantly strive for high environmental and quality standards.



Bob Allen, Executive Director

Voluntary Organisations

CVS believes in the value of local people helping others in their communities. The history of voluntary action is one of unselfish commitment. The principles of the community strategy are ones which hold these values true and should be welcomed and encouraged. We are fully committed to membership of Wigan's Local Strategic Partnership and particularly in ensuring that the local community has a voice.



**Nick Trotter & Jean Garlick
Wigan and Leigh Council for Voluntary Services**

Wigan Leisure & Culture Trust

Understanding people's needs and desires is fundamental to creating the future we all want to see. Working with the community and our partners we can build a service that increases participation in cultural and physical activity leading to healthier, happier lives for everyone.



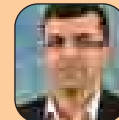
Rodney Hill, Chief Executive

Community Networks

The Community Networks are committed to developing the confidence, skills and expertise of local people so that they can really 'make a difference' and to feeding local opinions in all directions to help improve the quality of life in the Borough.



Marion Andrews



Khaled Amini



Joe Taylor



Carol Watson

Department for Work and Pensions

We're committed to our work in Wigan Borough. We want to support local people by promoting opportunities and helping individuals achieve their potential through employment. We hope that by doing this we can help end poverty in all its forms.



Marie Gillot, External Relations Manager

Wigan Council

We all want to live in safe, clean, vibrant and pleasant neighbourhoods, where everyone can enjoy the many ranges of social and recreational interaction. In striving to achieve this, and to ensure its sustainability, we need to ensure that everyone has a route into shaping our communities. Local people know local issues and its absolutely critical to listen to the views of the people who live there. With this will come ownership and hopefully civic pride for the community.



Cllr Paul Tushingam

School Governors Forum

School governors works as "critical friends" with Schools to ensure the best start for our young people. This is much more than just results tables and managing budgets. We promote healthy schools with a broad curriculum and an environment that prepares young people for the challenges and opportunities they'll face in 2026.



Tom Frost, Chairman Governors Forum

Greater Manchester Chamber of Commerce

I want a strong and vibrant business community that takes a lead role in the North West economy - that offers opportunity for all residents irrespective of their background and ability. A business community that recognises its responsibilities and does everything it can to tackle those areas that need a helping hand.



Chris Fletcher, Policy Director

Wrightington, Wigan and Leigh NHS Trust

Sustainable development involves everyone across the whole of the local community. At Wrightington, Wigan and Leigh NHS Trust we are totally committed to supporting this important agenda. Over the next 5 years we will be investing £1million to improve our energy efficiency and carbon footprint for the benefit of our patients, staff and the local community.



Andrew Foster, Chief Executive

Wigan Council

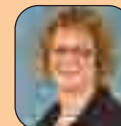
We want to build a future for the young people of the Borough to inherit in eighteen years time. By listening to the ideas and aspirations of local people, this strategy is a key step towards achieving this. We hope to move forward with our partners and local people to make this vision a reality.



Joyce Redfearn, Chief Executive

Wigan and Leigh College

We are committed to supporting the community strategy through education and training making a difference to people's lives. We are working in community venues to help people improve their literacy and numeracy skills and training people to get jobs in skills needed for the future



Cath Hurst, Principal

Ashton, Wigan and Leigh Primary Care Trust

Addressing inequalities, developing services, improving health and working in partnership are the top priorities of NHS Ashton, Leigh and Wigan. The Community Strategy is a visionary document that will help us to achieve our aims. It puts the needs of all our citizens at the top of its agenda and as a resident of this borough I welcome it.



Alan Stephenson, Chairman

Children, Young People and Families Partnership

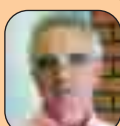
CYPF Partnership is committed to the wellbeing, education and achievement of our children. Our children are the future of our community. The future of our community depends on improving outcomes for children young people and families. The Partnership is committed to working together to achieve that objective.



Gareth Cheesman

Age Concern - Wigan Borough

We all get only one shot at living and we all want to have a rich and fulfilled life, but, perhaps, no one looks forward to old age. Age Concern, along with all charities and voluntary groups representing older people, wants to ensure that, for however long we live, we live a full, happy and resourceful life. Older people have experience of life, of work, of service to community and family; and much of this is valuable to the whole of our society.



Jim Maloney, Chairman

Greater Manchester Fire and Rescue Service

We are committed to identifying and reducing the risks from fire and other incidents for everyone living, working or visiting the borough of Wigan. We'll continue to support the council and other partners to reduce the incidents of non-fire emergencies by contributing to community education and safety awareness campaigns.



John Harding, Borough Commander

Faith Network

The different faith communities in Wigan borough are committed to working for all that makes our town a warm, safe and friendly place to live, where difference means opportunity to explore the variety of cultural expressions which exist in Wigan today. It matters a lot to us that we are seen and valued as a partner in this process.



**Reverend Ray Hutchinson
Rector of Wigan Parish Church**

Wigan & Leigh Housing

Tenants and Wigan and Leigh Housing Board want better neighbourhoods and more homes for people to live in. We want to give young people from disadvantaged communities better job opportunities. This document provides local people and partners with a clear direction on how, together, we can turn our vision into reality.



Ashley Crumbley, Chief Executive

Making sure we do the right things

This new Community Strategy is all about the long term aspirations of local people for the young people of the future - 2026.

Over the next few years this strategy will guide the actions of all the key public services and will provide the framework for how services and communities will work together to address problems and to create new opportunities.

We recognise that our principles and values need to underpin all action that takes place in the Borough. For that reason we will be playing close attention to core questions around sustainability, equality and diversity, health and cohesion – as we believe that these are critical elements of all our work.

I want everyone in the Borough to feel able to take some part in helping to bring this plan to life. Whether you are involved in your local neighbourhood, work for one of our public services, run a local business, then these are the issues that affect you and all of us. If you want to get involved in any way than I'd be pleased to hear from you – you can write to me at Wigan Town Hall or e-mail me at leader@wigan.gov.uk



Lord Smith of Leigh
Chairman
Wigan Borough
Partnership

Sustainability

Sustainability must underpin everything we do, to ensure we achieve a sensible balance between the environmental, social and economic impacts of our actions. What might be the potential harm or benefits that our plans and decisions will have as we want to support more sustainable lifestyles?

We need to ask...

- Will actions promote a more sensible use of natural resources – energy, waste, carbon emissions?
- Will everyone have a greater understanding and ability to adapt to the impacts of climate change?
- Will actions improve our neighbourhoods - air, soil, water, wildlife – as well as the built environment?
- Will actions encourage a well connected, efficient transport system?
- Will actions improve community safety and reduce the fear of crime?

Equality, Diversity and Cohesion

Feeling valued and respected is a right for all local people. Action plans need to ensure that they take all needs into account - especially the needs of people who may suffer disadvantage or unequal treatment...

We need to ask...

- Will action help to address local inequalities?
- Will everyone be treated fairly?
- Will the action promote a stronger sense of community and local belonging?

Health and well being

Good health and a sense of well being is critical - and we need to ensure that we promote a clear focus on promoting good health and lifestyles as well as improving services for people with poor health.

We need to ask...

- Will planned actions help people to become more active
- Will it enable people to make choices about behaviour and lifestyle that will improve quality of life and well being

For more information:

Website:

www.wigan.gov.uk/vision2026

Email:

lsadmin@wigan.gov.uk

Telephone:

01942 827320 / 827371

In writing:

Wigan Borough Partnership
Wigan Town Hall
Library Street
WN1 1YN

Fax:

01942 827297

