



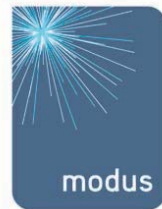
Environmental Services Department

Planning and Regeneration

Urban Design

AWARDS 2006

in partnership with



Wigan Council have launched a new initiative to promote and encourage good design across the borough, and to recognise schemes which build in quality into their constructional design.

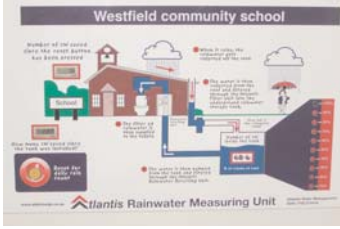
All the schemes within this leaflet are receiving Urban Design awards or commendations and are being celebrated at a special awards ceremony at the Wigan Investment Centre on Monday 16th October 2006.

Modus Properties, who are developing the Wigan Town Centre Grand Arcade scheme, have kindly agreed to sponsor the awards.



New Buildings

WESTFIELD COMMUNITY SCHOOL, PEMBERTON



A new primary school and community facility which will become a focus for a range of community activities.

The new school is designed in a contemporary style, and is notable for its 'green' construction, which includes rainwater harvesting, rooftop solar panels and use of 'sensor' taps to preserve water.

Children at the school will be able to monitor the recycled rainwater through a special control panel, which will help to raise awareness of environmental issues at an early stage.

Designed for: **Wigan Council/Sure Start**

Designed by: **NPS Northwest**

Constructed by: **Keir Group**

PENNYGATE MEDICAL CENTRE, HINDLEY



A new medical centre which uses an attractive blend of traditional and contemporary materials, including red brick, timber panelling and exposed structural steel beams.

The development raises the environmental quality of this particular area which houses a number of lower quality industrial premises.

Designed for: **United Healthcare Developments**

Designed by: **PRP Architects**

Constructed by: **Various contractors**

79 WIGAN ROAD, STANDISH



The development shows how higher density housing developments can be successfully integrated into the streetscene by applying sound design principles and respecting the character of the local area.

The development has retained mature planting along the front of the site and has high quality landscaping and parking areas.

Designed for: **Wilson Connolly**

Designed by: **MPSL**

Constructed by: **Wilson Connolly/Arley Homes**

Conservation Refurbishment

11 MARKET PLACE, WIGAN



A good example of sensitive refurbishment and restoration of a historic town centre property, which had suffered from insensitive alterations in the past.

The scheme involved a comprehensive external and internal refurbishment, including a new shopfront using traditional detailing appropriate to the town centre conservation area.

The refurbishment has been supported by the council and English Heritage through a Partnership Grant scheme.

Designed for:	Dencourt Ltd.
Designed by:	Stephen D. Buxton and Associates
Constructed by:	J.Mills Contractors

TOWN FARM, GOLBORNE



The development is successfully blending new housing with a number of historic farm properties to create an attractive environment which provides a range of housing types in a popular location.

The 3 historic properties on the site have been sensitively refurbished and sit comfortably within the newly created streets of the housing development.

Designed for:	Wainhomes
Designed by:	Wainhomes
Constructed by:	SA Developments

WILLIAM HILL, BRADSHAWGATE, LEIGH



The redevelopment of the shopfront has included the opening up and restoration of original 1930's art deco detailing to the shop fascia, which had been boarded over by previous works.

The refurbished shopfront now makes a positive contribution to the character of the Leigh Town Centre Conservation Area.

Designed for:	William Hill
Designed by:	Matthew Williamson
Constructed by:	Various contractors

ST. JOHN RIGBY SIXTH FORM COLLEGE, ORRELL



An impressive remodelling of the main college entrance as part of a larger refurbishment programme, which includes high quality landscaping and the provision of disabled parking close to the entrance.

The entrance canopy is designed in a strong contemporary style, which lifts the relatively plain façade of the college building.

Designed for:	St. John Rigby College
---------------	------------------------

Designed by:	AD Architects
--------------	---------------

Constructed by:	Various contractors
-----------------	---------------------

Environmental Quality

SCOTMAN'S FLASH DISCOVERY TRAIL



A discovery and orienteering trail containing 10 individually designed pieces of public art which can be viewed from the water on Scotman's Flash.

The pieces were designed and constructed by over 30 local young people and artists and represent different aspects of the flashes and their history.

The trail forms part of a much larger longer-term improvement programme to the Wigan Flashes, which has created a valuable and well-used facility for local people.

Designed for:	Wigan Council and The Wildlife Trust
---------------	--------------------------------------

Designed by:	Local young people/various artists
--------------	------------------------------------

Constructed by:	Local artists/young people
-----------------	----------------------------

THE STANDISH DISHES



The new sculpture is a good example of how a local community can work together to improve their local environment.

The development of the ideas for the sculpture has helped local children to understand their environment and local history.

The sculpture has attracted broad support and has been funded by private sector partners including Lloyds TSB, Ainscough Crane Hire and The Standish Print Company.

Designed for:	Standish Environmental Group
---------------	------------------------------

Designed by:	Woodfold School/St. Wilfreds School/ St. Maries School
--------------	---

Constructed by:	Mick Kirby-Geddes/Taylors Memorials
-----------------	-------------------------------------

ATHERTON GATEWAY MOSAIC



The public art mosaic was designed to welcome visitors to Atherton and acts as a Gateway feature.

The site was previously in a poor condition and did not give a good image to visitors to the town.

Designs for the mosaic were prepared by children from a local school in conjunction with a local artist.

Designed for:	Atherton Township Forum
---------------	-------------------------

Designed by:	Local schoolchildren/artist
--------------	-----------------------------

Constructed by:	Wigan Council/Brian Taylor
-----------------	----------------------------

HELPING HANDS, INCE



A community-led piece of public art, which forms part of a wider programme to improve the main transport corridors throughout the area.

The artwork is constructed from Bronze and is illuminated at night by spotlights.

The theme of 'helping hands' came from the local community and the various stages of design were subject to public consultation through the local Township Forum.

Designed for:	Wigan Council/One Stop for Regeneration
---------------	---

Designed by:	Wigan and Chorley Groundwork Trust
--------------	------------------------------------

Constructed by:	Leander Architectural/Groundwork Trust
-----------------	--

Better design helps to provide a better quality of life for everyone and makes the places where we live more attractive and safer.

These awards celebrate projects which are helping to achieve this and everyone involved should be proud of their role in improving the quality of our environments.

Coming Soon

This is the second year that the awards have been presented by the Council. In the next few years several major projects, such as the Grand Arcade and its Landmark Tower, Leigh Sports Village and the Trencherfield Mill complex at Wigan Pier will be completed. These schemes will continue to set high standards in their design and the quality of construction.