

Audit of the Common Assessment Framework

Report

Suzanne MacLachlan
Change For Children And Young People Co-ordinator

Contents

CAF Assessment	Page 3
Information taken from the CAF about each child	Page 4
Child/Young person age and whom they live with	Page 5 – 6
Lead Professional	Page 7
Identified Concern	Page 8 - 9
Audit of CAF Quality	Page 9 – 15
Out Comes	Page 15 – 6
Training	Page 17 – 21
Suggestions for future developments	Page 21

CAF Assessment

The CAF is a standardised process for assessing the needs of children and young people and their families which is the same for all local partners cross England. The CAF process has been deployed across all children's services since summer 2007. Following the implementation of the CAF for children with unmet needs.

The audit looked at the quality of the CAF received by the Change for Children and Young People Team. Looked at the lessons learnt from the audit and how to improve the quality of the CAF's received. To share the learning with the Learning and Development Department to enable them to integrate this within the CAF training and passing on the learning to practitioners who will undertake the CAF's across the partnership.

The audit will also look at the outcomes from the CAF information on file.

The CAF training will also form part of the audited to ensure that it is fit for purpose and meeting the needs of the workforce.

The audit looked at the CAF's that have been completed by 15th October 2009. Because the LA is moving in to locality based teams the decision was taken that the audit will look at 10 CAF's from each of the localities.

All the information within this report has been anonymised.

I would like to thank the CAF co-ordinator in Manchester for sharing the Common Assessment Framework Quality Assurance Tool with Wigan.

I have agreed to take part in an audit of CAF's for the WSCB that will take place in June 2010 looking at referrals made to social care that have not reached their threshold criteria level 3b and social care have asked the referrer to undertake a CAF.

Information taken from the CAF about each child

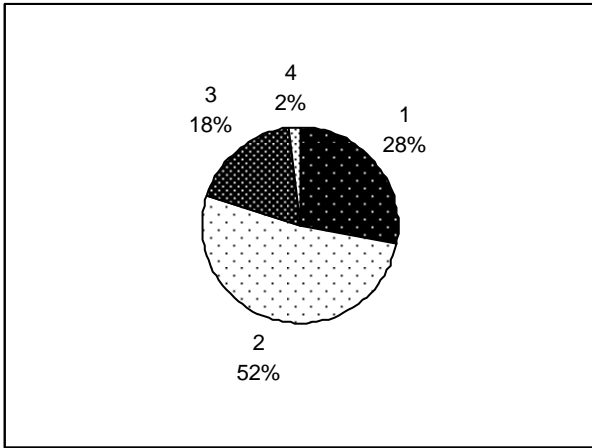
ID no	Childs DOB	Siblings	Parents /carers	Concern identified	Main concern	Lead professional	School/ agency	Professionals involved	Intervention	Outcome	Number of Change meetings	Known to social care before CAF	Referral made to social care because of CAF	Any other information

Children by age

Ages	Numbers
0 -3	1
4-5	8
6-7	3
8-9	5
10-11	10
12-13	10
14-15	1
16-17	5
18-25	7

Child/Young person age and whom they live with

age	Parents /carers			
	1 parent	2 parents	Step – parents /partners/ grand parent	Independent
0-3		1		
4-5	1	6	1	
6-7	2		1	
8-9	1	3	1	
10-11	4	3	3	
12-13	2	6	2	
14-15		1		
16-17	2	2	1	
18-25	2	4		1
Total	14	26	9	1



52% of the children / young people surveyed live with both birth parents.

28% of the children / young people surveyed live within a one parent family.

18% of the children / young people surveyed live within a house hold where their is a step parent, partner or they live with their grand parents.

2% of the children/ young people surveyed live independently.

Lead Professional

	0-3	4-5	6-7	8-9	10-11	12-13	14-15	16-17	18-25
Child Support Team		1	1	1	2	1			
Connexions								3	7
Young carers			1		1	1	1		
Education Welfare				1	2	2		1	
YOT				1				1	
Health Visitors		4							
Travellers Team						1			
Schools		2	1	2	4	3	1		
School Nurse		1				1			
Education Psychologist					1	1			
Link Worker	1								
YPDAT								2	

Identified Concerns

Main concern	Child's age	Locality child is from		
Sexualised behaviour	12yrs		<u>2</u>	
Young Carers	7yrs 9yrs 11yrs 12 yrs 14yrs		<u>1</u> <u>2</u> <u>3</u> <u>4</u> <u>5</u>	
Neglect	5yrs 4yrs, 11yrs,12yrs		<u>4</u> <u>5</u>	
Behaviour Issues	5yrs, 13yr 11yrs, 16yrs 9 yrs,11yrs 13yrs, 14 yrs		<u>1</u> <u>2</u> <u>3</u> <u>4</u> <u>5</u>	
Parents Mental Health /illness	2yrs 5yrs 15yrs		<u>2</u> <u>5</u>	
Attendance	7yrs, 8yrs 9yrs,11yrs x 2, 15yrs 11yrs, 16yrs 13yrs		<u>3</u> <u>1</u> <u>2</u> <u>4</u>	
Down Syndrome	4yrs		<u>2</u>	
Past sexual abuse	12yrs		<u>2</u>	
Housing issue	18yrs 17yrs x2		<u>3</u> <u>4</u>	
Medical Condition	5yrs		<u>4</u>	
Bereavement	13yrs		<u>1</u>	
Fire Lighter	11yrs		<u>4</u>	
Home issues with parents	11yrs		<u>4</u>	
Delayed speech	4yrs		<u>1</u>	
DV	4yrs ; 12yrs 10yrs; 11yrs 16yrs		<u>3</u> <u>4</u> <u>5</u>	

ETE	17yrs 19yrs 20yrs	$\frac{4}{5}$ 1		
Parents drug use and criminal behaviour	16yrs 18ys	1, 3		
Teenage Pregnancy	19yrs	3		
Missing From Home	17yrs	5		

Audit of CAF Quality

The audit of the CAF's were a challenging task because all of the CAF's within the audit had to be read by myself because I did not have any support. The CAF's read and assessed on the whole have been positive. There was learning to be taken away by the Change for Children And Young People Team (CfCYPT), to ensure that permissions were ticked on the forms, review dates completed. This has been addressed and put into practice by the CfCYPT, and past to the Learning and Development Team to reinforce during training.

Each section of the CAF was scored and the totals for each section is shown in the table.

The lowest scores were within the satisfactory level of information, most scored within the excellent level of information.

Common Assessment Framework QUALITY ASSURANCE Tool

												Locality 1.
Total Score												
Section 10 - Comments & Consent												
Section 9 - Conclusions, Solutions & Actions												
Section 8 - Family & Environmental												
Section 7 - Parents & Carers												
Section 6 - Health & Learning												
Section 5 - Services working with this Infant/Child/YP												
Section 4 - Details of PCA & LP												
Section 3 - Details of Parents/Carers												
Section 2 - Assessment Information												
Section 1 - Identifying Details												
	120	20	90	40	30	10	10	36	20	30	406	
	120	20	110	40	10	10	10	20	55	50	445	
	100	20	100	40	30	30	30	35	50	45	480	
	100	20	110	40	20	5	5	20	30	60	410	
	100	20	80	40	20	30	30	0	50	40	410	
	100	20	0	40	30	30	30	35	60	60	405	
	110	0	40	40	30	30	30	30	60	60	540	
	100	10	55	40	30	17	18	18	66	45	399	
	120	20	60	40	30	18	25	26	70	50	459	
	90	20	50	40	20	25	17	30	30	50	372	

											Locality 2
Total Score											608
Section 10 - Comments & Consent											60
Section 9 - Conclusions, Solutions & Actions											52
Section 8 - Family & Environmental											23
Section 7 - Parents & Carers											30
Section 6 - Health & Learning											88
Section 5 - Services working with this Infant/Child/YP											30
Section 4 - Details of PCA & LP											70
Section 3 - Details of Parents/Carers											110
Section 2 - Assessment Information											20
Section 1 - Identifying Details											125
											603
											604
											580
											607
											560
											531
											450
											581
											540

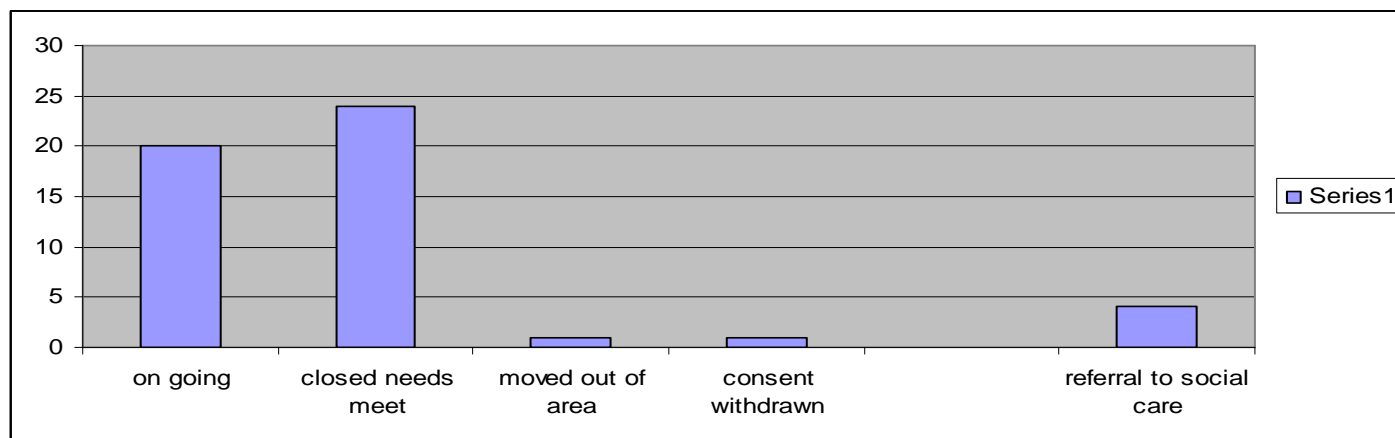
											Locality 3
Total Score											406
Section 10 - Comments & Consent											30
Section 9 - Conclusions, Solutions & Actions											20
Section 8 - Family & Environmental											36
Section 7 - Parents & Carers											10
Section 6 - Health & Learning											10
Section 5 - Services working with this Infant/Child/YP											30
Section 4 - Details of PCA & LP											40
Section 3 - Details of Parents/Carers											90
Section 2 - Assessment Information											20
Section 1 - Identifying Details											120
											445
											480
											410
											410
											405
											540
											399
											459
											372

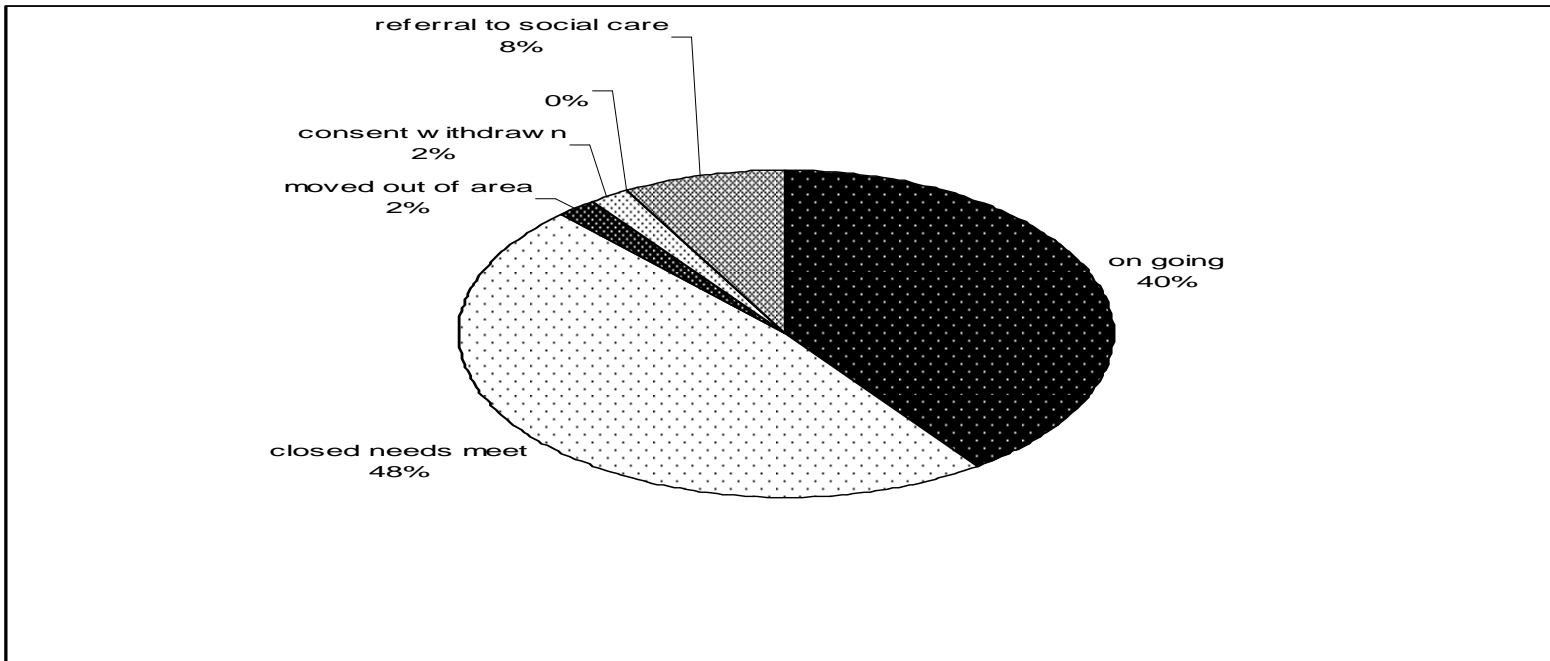
											Locality 4
Total Score											
Section 10 - Comments & Consent											
Section 9 - Conclusions, Solutions & Actions											
Section 8 - Family & Environmental											
Section 7 - Parents & Carers											
Section 6 - Health & Learning											
Section 5 - Services working with this Infant/Child/YP											
Section 4 - Details of PCA & LP											
Section 3 - Details of Parents/Carers											
Section 2 - Assessment Information											
Section 1 - Identifying Details											
130	20	40	70	25	102	25	35	55	60	562	
120	20	90	70	20	100	20	30	55	60	585	
110	20	100	70	30	82	20	40	25	50	547	
130	20	50	70	30	120	30	40	70	50	610	
90	15	80	50	30	90	20	40	60	60	535	
90	10	110	70	30	115	30	40	55	60	610	
70	0	80	50	20	115	25	30	60	60	510	
120	20	110	70	30	120	10	0	60	40	580	
90	20	60	50	30	85	20	10	50	60	475	
80	15	100	60	30	50	0	10	70	40	455	

Summary											Locality 5
Total Score	Section 10 - Comments & Consent	Section 9 - Conclusions, Solutions & Actions	Section 8 - Family & Environmental	Section 7 - Parents & Carers	Section 6 - Health & Learning	Section 5 - Services working with this Infant/Child/YP	Section 4 - Details of PCA & LP	Section 3 - Details of Parents/Carers	Section 2 - Assessment Information	Section 1 - Identifying Details	
475	40	55	15	5	35	20	70	85	20	130	
480	40	30	20	15	80	20	70	65	20	120	
560	30	50	10	20	120	30	70	110	20	100	
385	40	20	30	10	50	20	50	55	20	90	
575	60	50	20	30	105	30	70	110	20	80	
560	40	55	30	30	85	30	50	110	20	110	
570	60	60	35	25	120	30	70	50	20	100	
433	40	40	5	0	88	20	70	60	20	90	
555	50	5	40	20	120	30	50	110	10	100	
570	60	55	40	30	105	30	70	60	20	100	

Key	
0- 99	Requires immediate attention
100 - 199	Poor, requires additional information
200-299	Satisfactory level of information
300-399	Good level of information
400-499	Excellent level of information

Outcomes





The Out comes

48% of the children / young people surveyed the CAF was closed because the needs were met.

40% of the children / young people surveyed the CAF is on going.

8% of the children / young people surveyed a referral was made to Social Care and an Initial Assessment was undertaken.

2% of the children / young people surveyed moved out of the area.

2% of the children / young people surveyed consent was withdrawn.

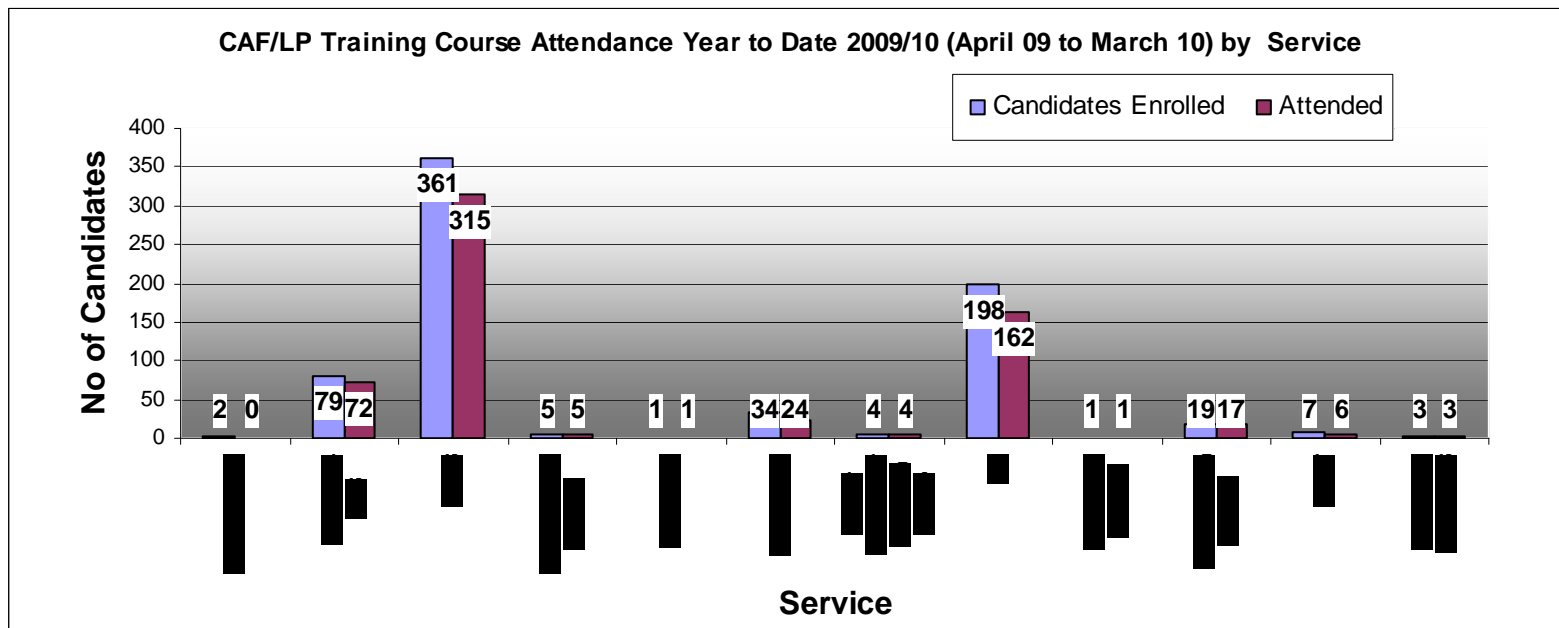
Training

There have been 610 numbers of the workforce trained in CAF, LP and Information Sharing since April 2009 to March 2010, across the partnership.

CAF & Lead Professional Training - 2009 / 2010 Year to Date

Overall Attendance							
Course Title	Target Audience	Courses Run	Candidates Enrolled	Attended	Non Attended	Attended %	Non Attended %
Common Assessment Framework (CAF), Lead Professional & Information Sharing	Multi Agency	35	541	473	68	87%	13%
CAF Lead Professional Information Sharing	Early Years	13	173	137	36	79%	21%
Totals		48	714	610	104	85.4%	14.6%

Breakdown by Service					
Service	Candidates Enrolled	Attended	Non Attended	Attended %	Non Attended %
Adult Services	2	0	2	0%	100%
ALWPCT - NHS	79	72	7	91%	9%
CYPS	361	315	46	87%	13%
Environmental Services	5	5	0	100%	0%
GM Police	1	1	0	100%	0%
GMW - NHS	34	24	10	71%	29%
Greater Manchester Probation Service	4	4	0	100%	0%
PVI	198	162	36	82%	18%
PVI - Out of Borough	1	1	0	100%	0%
Wigan & Leigh Housing	19	17	2	89%	11%
WLCT	7	6	1	86%	14%
WWL Acute Trust - NHS	3	3	0	100%	0%
Totals	714	610	104	85.4%	14.6%



Example of training feed back

The training feed back is very positive however this is not reflected in an increase in the numbers of CAF assessments that are being undertaken with children young people and their families.

**EVALUATION FEEDBACK FOR CAF, LEAD PROFESSIONAL & INFORMATION SHARING
(03/11/09)**

Course Presenter: Karen Goodwill

1. CONTENT

	Outstanding	Good	Satisfactory	Inadequate
1) How the programme met its objective	10	2		
2) The programme was relevant to my role/responsibilities	10	2		
3) Usefulness of course material/handouts	11	1		
4) Content presented in a well organised and clear	11	1		

way				
5) Trainer - knowledge and skills	12			
6) Venue - including access	5	5	2	

2. EQUALITY AND DIVERSITY

Wigan Council and its partners promote inclusion, equality and opportunity for all.

Did this course meet these aims?

Yes 11 No

3. IMPACT

What elements of the course can you apply in practice?

- All the elements were relevant to my role
- Become a lead professional if required. Fill in a CAF if needed with the relevant support and help
- All of the information will be useful within my remit
- Better understanding if I am involved with CAF
- Identifying the need for a CAF
- Better awareness of how my working role would fit into the CAF system
- As an 'author' of the CAF, can visit and complete, as I have only been in post 3 weeks, but completed one already
- Use links to put into policy pack and sign post Early Years settings to relevant bodies
- All of it. I found all of the course beneficial to my practice
- The threshold of need gives me a clear understanding of other Yaps who could be involved
- All of the course is relevant to my role despite being in the adult service

What do you feel you are now going to do differently, as a result of attending the course?

- I feel more confident in being a lead professional, also more able to complete a CAF
- Be confident in completing a CAF if necessary
- I will continue with my inclusion in this area more confidently
- Be more confident where CAF is involved and know where I can find contacts
- Awareness rose of how agencies can come together and act in a co-ordinated way. More confidence in involving the process
- Feel would have no difficulty completing CAF form or being involved in Action Plan
- Initiating CAF meetings with service users coming into the children's centre
- Put into practice what I have learned
- I am more confident in being the lead professional
- Offer additional assistance to relevant yps who could benefit from a CAF

- Look at how as a service we can contribute to the CAF Process
-

How will you change the way you act with other agencies?

- Will contact relevant agencies to fill in any missing gaps and continue to share relevant information
- I will continue as I feel I am quite strong in this area
- Be more aware of the other agencies
- Already have multi agency approach in my working practice – will continue
- As above
- Continue to work with other partners
- I feel more confident about what information to share with other agencies
- I will be better able to discuss the need or suitability of lead professionals for each case
- Yes I will look to improve existing partnerships

What will you stop doing?

- Looking for paper trails on individual pupils
- Wondering who to contact
- Normally signpost, now initiate CAF if needed and invite other agencies
- Continue to work
- Being concerned about approaching families with difficulties regarding filling in a CAF
- Procrastinating
-

What will you start doing?

- Following the CAF procedures
- Asking and talking to other agencies if I'm not sure about a child
- Hopefully be involved more at CAF level
- Share information more with other agencies
- Offering additional assistance to more yps
- Ensuring that the teams within the A & DD contribute to the CAF

4. ADDITIONAL COMMENTS

What did you like?

- How the training has improved my awareness and importance of a CAF
- I found the course very useful and will benefit from a lot professional and for the benefit of children and families with whom I work with and come in contact with
- The information background

- Finding out what CAF was and how it's filled in
- Very good handouts and information
- Interesting subject. Good tutor. Case studies and practical work
- Very interesting and knowledgeable. Tutor knew her subject very well
- I enjoyed the contributions of the group

What did you dislike?

- Nothing
- The room was slightly stuffy

Suggestions for Future Developments

- Self assessment by practitioners
- Audits by Team Managers
- Children Young people and their families providing feed back.