



**WIGAN WORLD SUMMIT 2007**

# Planetary Habitability



Featuring at this years inaugural Green Awards at London's Guild Hall, This film takes us on a visual journey of the alarming effects of climate change on our planet.

[Visit the website for Pole to Pole](#)

Author: green.tv

Copyright: Greenpeace, green.tv, Green Awards

# Grand Arcade



# leighsportsvillage



**Swimming pool** - a 25m, six-lane pool  
**Sports hall** – 8 courts for badminton, basketball, netball, volleyball and football with seating for up to 280 people;  
**Profiles fitness gym**  
**Multi-purpose room** – aerobic sessions / martial arts etc.,  
**Aerobics suite** – ideal for aerobic work-outs  
**Changing room village** – a series of individual changing areas complemented by six additional changing rooms.





**LEIGH SPORTS VILLAGE SITE PLAN**



# Greenheart - Regional Park Project

## Strategic Countryside Sites and Major Developments

Wigan Council  
Planning & Development Department

(Not to scale. Diagrammatic only)

# GREENHEART

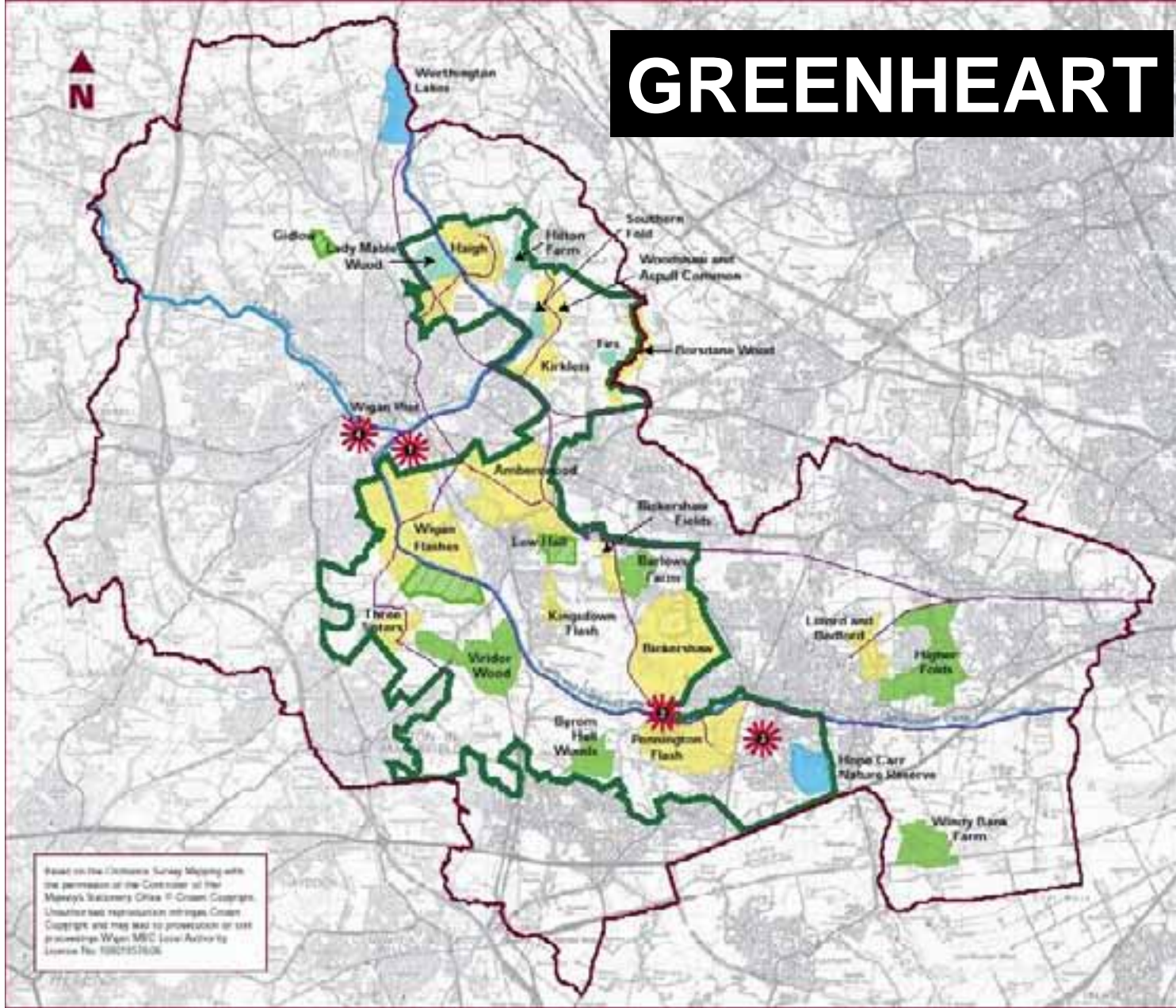
- Wigan Borough Boundary
- Greenheart Regional Park Project
- Potential Greenway

### Land Ownership

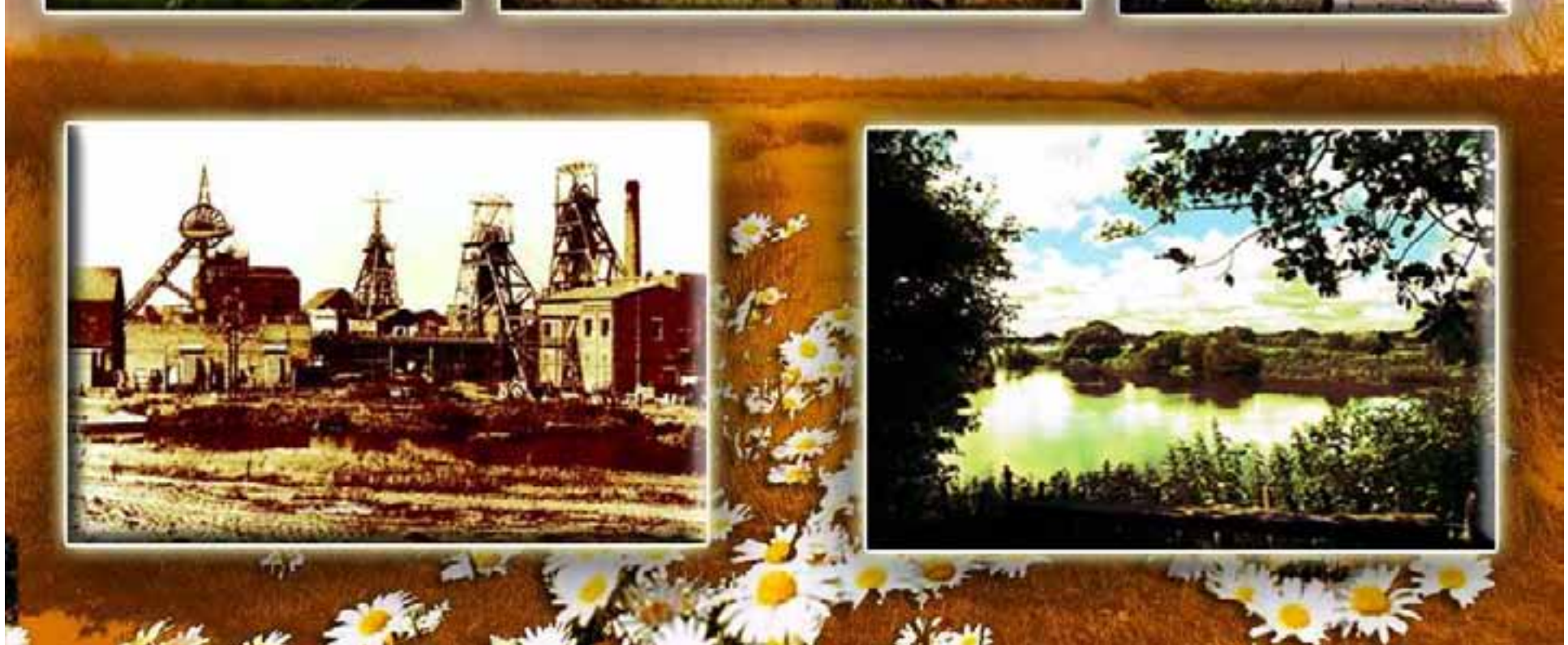
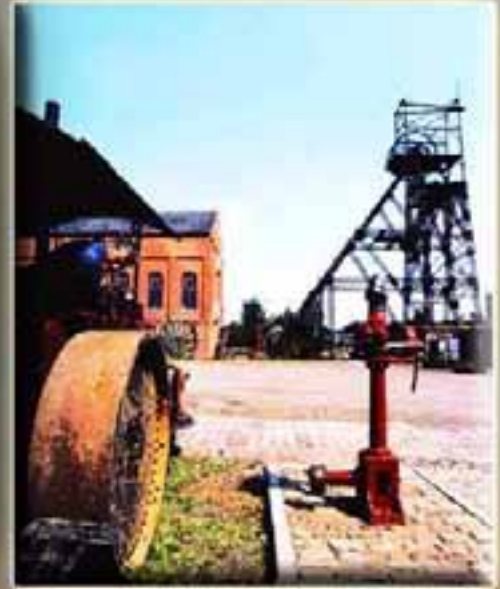
- Wigan Council
- Forestry Commission
- Potential Newlands Site
- Woodland Trust
- United Utilities

### Proposed Major Developments

- Westwood Park
- Bickershaw South
- Leigh Sports Village
- Pier Quarter



Based on the Ordnance Survey Mapping with the permission of the Controller of Her Majesty's Stationery Office © Crown Copyright. Unauthorised reproduction infringes Crown Copyright and may lead to prosecution or civil proceedings. Wigan MBC Local Authority License No. 1000151606



# Westwood Park Grass Roof Building Concept







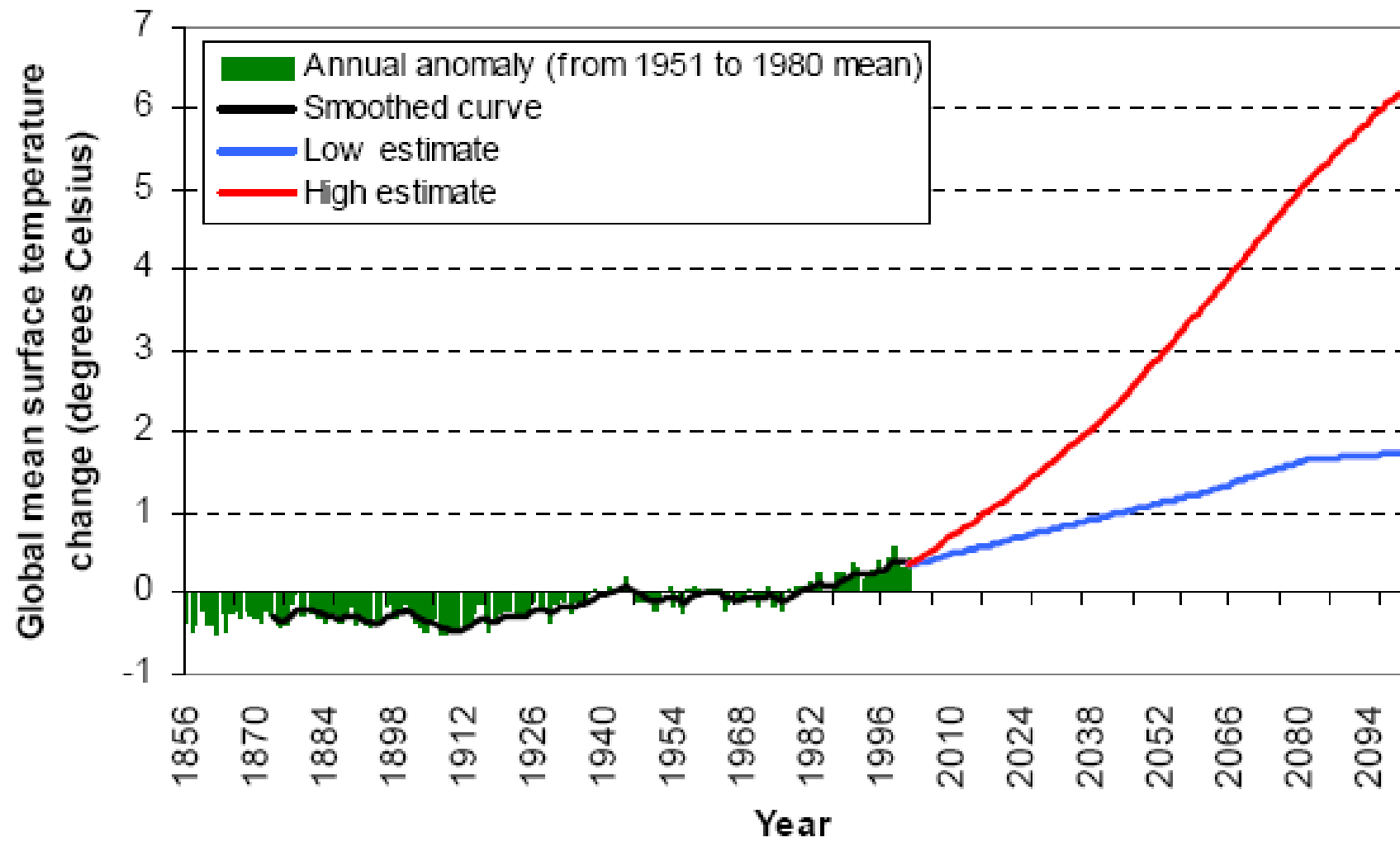
By the time you see this  
you will have seen

# an inconvenient truth

A GLOBAL WARNING

FROM THE DIRECTOR OF THE OSCAR-WINNING FILM "THE TALENTED MR. RIPLEY" AND "THE COLD COUNTRY"  
ALICE SWAYSON, PRODUCED BY JAMES CAMERON AND MICHAEL BAY  
www.inconvenienttruth.com

## Projected Global Warming during 21st Century



# Local Messages

- 55% Climate Change as major issue
- 86% Energy efficient buildings
- 55% Pollution a problem
  
- Wigan Citizens Panel

Every journey of 1000  
miles begins with a single  
step

Confucius