

# Mapping Poverty in Wigan Borough

## Report 4

### Indices of Deprivation 2004

<b>Contents</b>	<b>Page</b>
1 Introduction	4
2 Background	4
3 Indices at local level	5
3.1 Index of Multiple Deprivation 2004	6
3.2 Income Deprivation Domain	9
3.3 Employment Deprivation Domain	12
3.4 Health Deprivation and Disability Domain	16
3.5 Education, Skills and Training Deprivation Domain	20
3.6 Barriers to Housing and Services Domain	23
3.7 Crime Domain	25
3.8 Living Environment Deprivation Domain	28
3.9 Income Deprivation Affecting Children Index	31
3.10 Income Deprivation Affecting Older People Index	34
4 Indices at district level	37
5 Commentary	39
6 Conclusions	40
Appendix - Super Output Areas in Wigan Borough	41

## Foreword

Social Inclusion is one of the five principles of the Wigan Borough Community Plan.

*“Social Inclusion means ensuring that there are no barriers preventing individuals from reaching their full potential.”*

*“We need to confront the problems faced by people who find themselves disadvantaged in our neighbourhoods and in society. People who suffer from a combination of linked problems such as unemployment, lack of skills, low income, poor housing, high crime, bad health and family breakdown need more than ‘elastoplast’ answers - they need the things that enable them to change their lives for the better.”*

To work towards achieving Social Inclusion we need to understand how poverty and deprivation affects people in the borough. This is the fourth report of a series of “Poverty Profiles” investigating the geographical distribution of poverty and deprivation in the borough.

This document and the previous reports are available on Wigan Council’s web site at [www.wiganmbc.gov.uk/pub/planning/stats/](http://www.wiganmbc.gov.uk/pub/planning/stats/)

### **For further information please contact:**

Planning & Regeneration Department  
Civic Buildings  
New Market Street  
Wigan WN1 1RP

Phone: 01942 404249

Fax: 01942 404222

email: [planning@wiganmbc.gov.uk](mailto:planning@wiganmbc.gov.uk)

## 1 Introduction

This report provides an overview of the Indices of deprivation 2004 (ID 2004), published by the Office of the Deputy Prime Minister (ODPM) Neighbourhood renewal Unit and an initial interpretation of the results relating to Wigan Metropolitan Borough.

## 2 Background

The Government commissioned a review of Deprivation Indices in 2002, led by Oxford University. This was to take account of the fact that new, better and more up to date data for small areas was becoming available. After a considerable amount of consultation and debate the ID 2004 was published on 28 April 2004. This was revised on 17 June 2004 due to errors in the original data. Various background documents and the ID 2004 are available at <http://www.neighbourhood.gov.uk>

The Indices of Deprivation have previously been published at different levels. Most recently the Indices of Deprivation 2000 (ID 2000) was at Ward level, while the Index of Local Deprivation 1998 was at the lower level of Enumeration District.

The ID 2004 has been published for the first time at a newly developed local level known as Super Output Area (SOAs). These are based on groupings of the small postcode areas that were used for the collection of data for the Census 2001. Each SOA has an average of 1500 population and there are 200 SOAs in the Borough (there are 32,482 in England).

It is difficult to make direct comparisons of change over time due to the differences in levels and in methodology in developing the Indices. It would be incorrect to make assumptions that any area has become more or less deprived although the pattern may have changed in some instances. The Indices of Deprivation 2004 (like ID 2000) are about the relative position of districts and small areas compared with each other, and do not measure absolute change.

### 3 Indices at local level

The Indices include a total of 37 indicators and this data is presented by 7 Domains based on the premise that multiple deprivation has a number of separate dimensions as follows:

- Income
- Employment
- Health and Disability
- Education, Skills and Training
- Barriers to Housing and Services
- Crime
- Living Environment

Each of these combines a number of different indicators together to produce a score for each SOA and also a ranking in England (where 1 is the most deprived SOA and 32,482 the least deprived). Two additional pieces of information have been developed to produce a rank in Wigan Borough for each SOA (where 1 is the most deprived SOA and 200 the least deprived) and an indication of which range (by 10 percent bands) the SOA falls in England.

In addition two supplementary Indices have been constructed by extracting related data from the Income Domain. These are:

- Income Deprivation Affecting Children
- Income Deprivation Affecting Older People

A list of the indicators included and some data for the overall Index of Multiple Deprivation 2004, the seven domains and the two supplementary Indices is provided in the following sections. As an aid to interpreting this, in each section:

- The table on the left sets out the number of SOAs in the Borough in

the 5 highest 10 percent bands in England. Any figure above 20 shows a higher level than the national average.

- The table on the right sets out the percentage of SOAs in the Borough in the combined highest percent bands in England. Any above that percentage shows a higher level than the national average.
- The bar chart shows the percentage of SOAs in the Borough in all the 10 percent bands in England. Any above the 10% line show a higher level than the national average.

A table is provided in each section showing the SOAs in the Borough in the highest 10 percent range in England. This also gives an indication of the position of SOAs in the highest 3%, 5% and 7%.

A map is also provided in each section showing the SOAs in the Borough in the highest three 10 percent bands in England. The boundaries of the townships are also shown as an aid to identifying the greatest concentrations.

### 3.1 Index of Multiple Deprivation

All of the 7 key Domains have then been combined to form the main Index of Multiple Deprivation 2004. The following weightings were used to combine the domains into an Index of Multiple Deprivation (IMD):

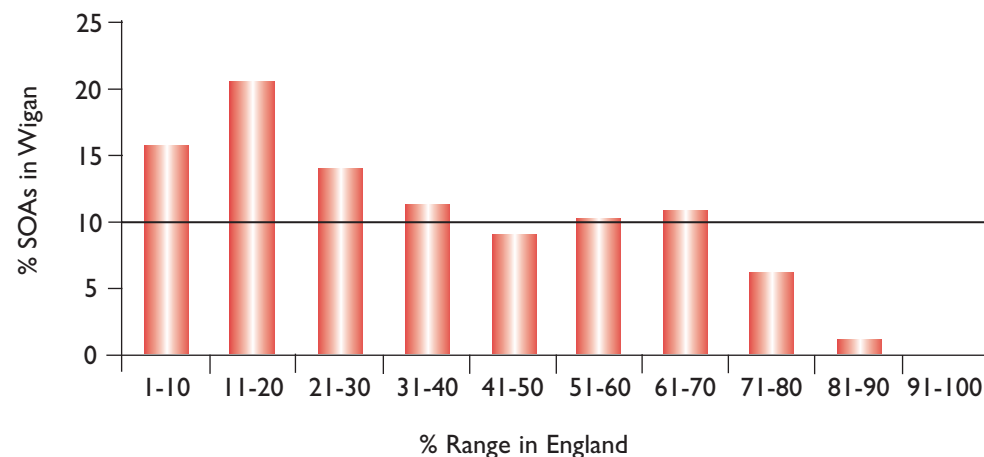
- Income 22.5%
- Employment 22.5%
- Health and Disability 13.5%
- Education, Skills and Training 13.5%
- Barriers to Housing and Services 9.3%
- Crime 9.3%
- Living Environment 9.3%

In the Index of Multiple Deprivation the main characteristics in the Borough are:

Percentage Range in England	Number of SOAs in Wigan	Percentage Range in England	% SOAs in Wigan
1 to 10%	32	highest 10%	16.0
11 to 20%	41	highest 20%	36.5
21 to 30	28	highest 30%	50.5
31 to 40%	23	highest 40%	62.0
41 to 50%	18	highest 50%	71.0

There are only two SOAs in the 81 to 90% range and none in the 91 to 100% range.

Index of Multiple Deprivation 2004 - SOAs in Wigan

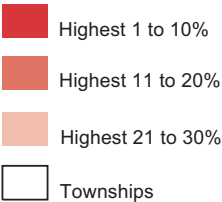


## Index of Multiple Deprivation 2004 - Areas in the highest 10% in England

SOA No.	SOA Name	Town/area	IMD Wigan Rank	Rank of IMD Score in England	Within highest % in England		
E01006357	Norley East	Wigan	1	153	3%	5%	7%
E01006351	Worsley Hall	Wigan	2	288	3%	5%	7%
E01006350	Worsley Hall North	Wigan	3	308	3%	5%	7%
E01006360	Marsh Green West	Wigan	4	644	3%	5%	7%
E01006411	Worsley Mesnes North	Wigan	5	656	3%	5%	7%
E01006240	Hag Fold North	Atherton	6	765	3%	5%	7%
E01006386	Scholes	Wigan	7	847	3%	5%	7%
E01006392	Scholes/Birkett Bank	Wigan	8	964	3%	5%	7%
E01006336	Westleigh East	Leigh	9	1019		5%	7%
E01006239	Hag Fold South	Atherton	10	1097		5%	7%
E01006327	Plank Lane/Crankwood	Leigh	11	1253		5%	7%
E01006254	Beech Hill West	Wigan	12	1263		5%	7%
E01006361	Marsh Green East	Wigan	13	1273		5%	7%
E01006248	Higher Folds North	Leigh	14	1399		5%	7%
E01006305	Higher Ince	Ince	15	1466		5%	7%
E01006369	Springfield/Wigan Town Centre	Wigan	16	1520		5%	7%
E01006213	Woodcock Drive Estate	Platt Bridge	17	1609		5%	7%
E01006288	Shakerley	Tyldesley	18	1866			7%
E01006275	Chapel Fields Estate North	Hindley	19	1896			7%
E01006215	Platt Bridge North East	Platt Bridge	20	1957			7%
E01006309	Lower Ince/Ince Green Lane	Ince	21	2236			7%
E01006241	Hag Fold West	Atherton	22	2354			
E01006328	Railway Road/Twist Lane	Leigh	23	2495			
E01006306	Dalington Street East	Wigan	24	2576			
E01006296	Siddow Common	Leigh	25	2578			
E01006352	Newtown	Wigan	26	2596			
E01006218	Platt Bridge North	Platt Bridge	27	2802			
E01006289	Hag Fold East	Atherton	28	2851			
E01006308	Higher Ince/Manchester Road	Ince	29	2864			
E01006270	Smithwood	Hindley	30	3014			
E01006310	Lower Ince	Ince	31	3072			
E01006283	Westleigh West	Leigh	32	3115			

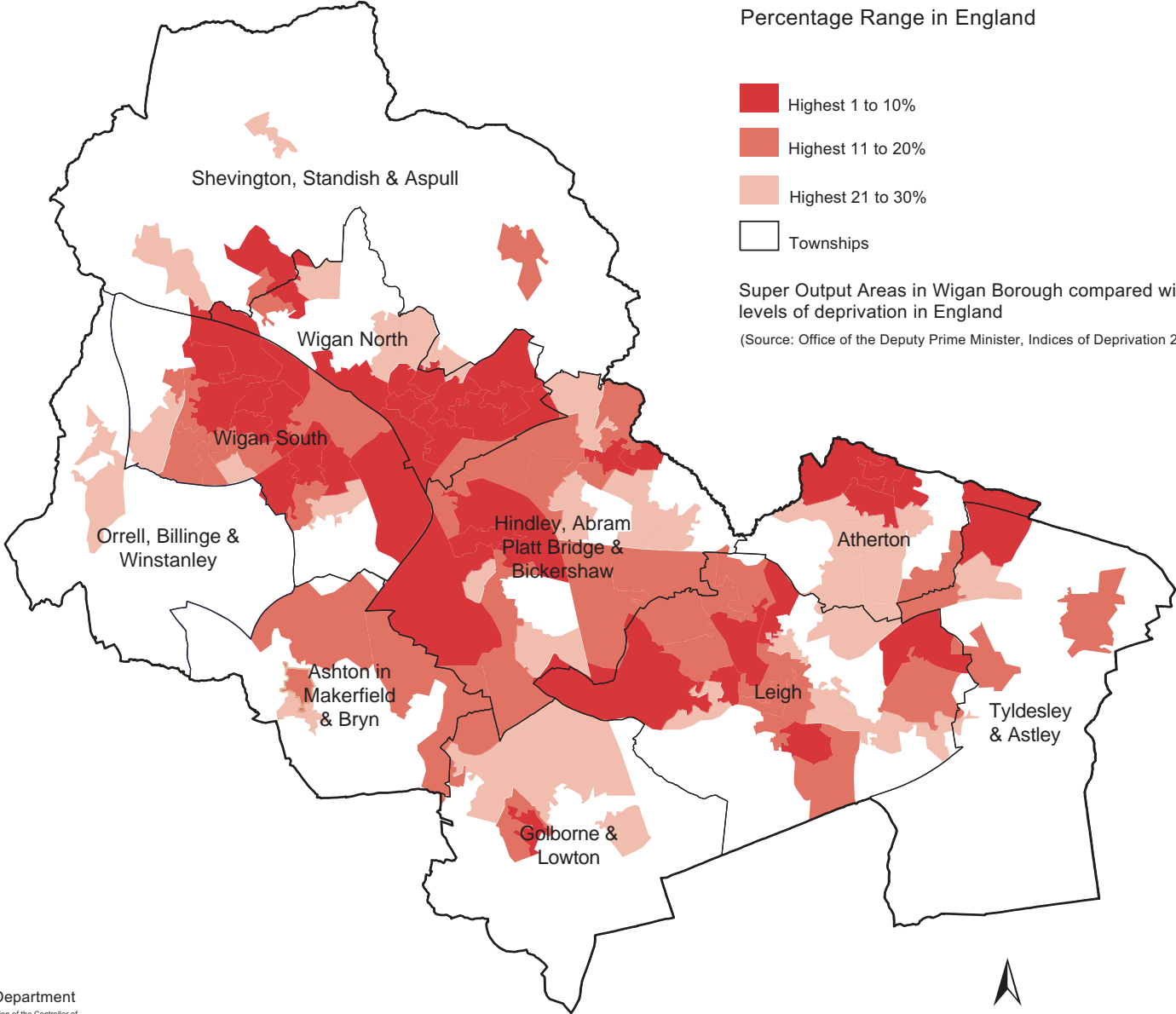
# Index of Multiple Deprivation 2004

Percentage Range in England

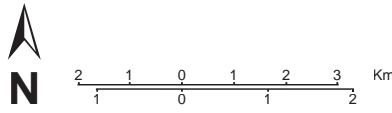


Super Output Areas in Wigan Borough compared with the highest levels of deprivation in England

(Source: Office of the Deputy Prime Minister, Indices of Deprivation 2004)



Planning and Regeneration Department  
 Based on the Ordnance Survey Mapping with the permission of the Controller of Her Majesty's Stationery Office © Crown Copyright. Unauthorised reproduction infringes Crown Copyright and may lead to prosecution or civil proceedings.  
 Wigan MBC Local Authority Licence No 100019579\_04



### 3.2 Income Deprivation Domain

The purpose of this domain is to capture the proportion of the population experiencing income deprivation in an area.

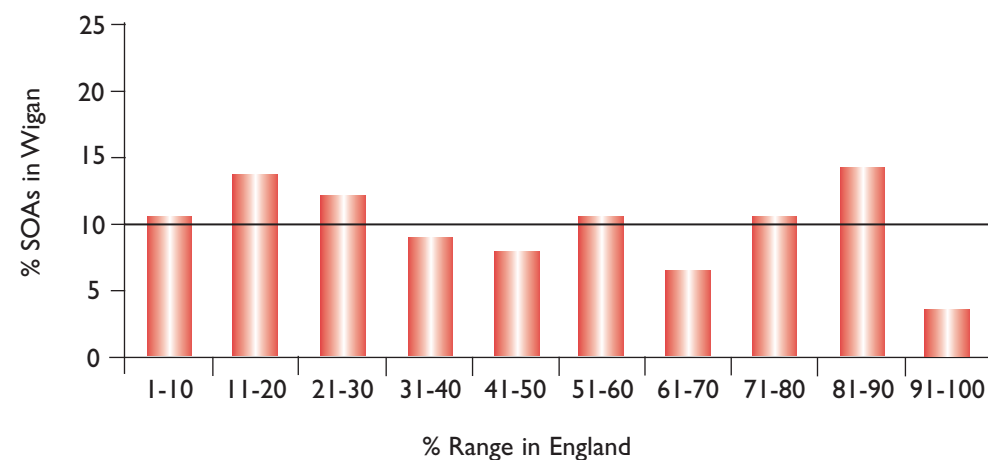
- Adults and children in Income Support households (2001)
- Adults and children in Income Based Job Seekers Allowance households (2001)
- Adults and children in Working Families Tax Credit households whose equivalised income (excluding housing benefits) is below 60% of median before housing costs (2001)
- Adults and children in Disabled Person's Tax Credit households whose equivalised income (excluding housing benefits) is below 60% of median before housing costs (2001)
- National Asylum Support Service supported asylum seekers in England in receipt of subsistence only and accommodation support (2002)

In the Income Deprivation Domain the main characteristics in the Borough are:

Percentage Range in England	Number of SOAs in Wigan
1 to 10%	21
11 to 20%	28
21 to 30	25
31 to 40%	18
41 to 50%	17

Percentage Range in England	% SOAs in Wigan
highest 10%	10.5
highest 20%	24.5
highest 30%	37.0
highest 40%	46.0
highest 50%	54.5

### ID 2004 Income Domain - SOAs in Wigan



## Indices of Deprivation 2004 - Income Deprivation Domain - Areas in the Highest 10% in England

SOA No.	SOA Name	Town/area	Income Wigan Rank	Rank of Income Score in England	Within highest % in England		
E01006351	Worsley Hall	Wigan	1	157	3%	5%	7%
E01006357	Norley East	Wigan	2	256	3%	5%	7%
E01006350	Worsley Hall North	Wigan	3	553	3%	5%	7%
E01006240	Hag Fold North	Atherton	4	663	3%	5%	7%
E01006411	Worsley Mesnes North	Wigan	5	820	3%	5%	7%
E01006360	Marsh Green West	Wigan	6	1171		5%	7%
E01006254	Beech Hill West	Wigan	7	1186		5%	7%
E01006392	Scholes/Birkett Bank	Wigan	8	1573		5%	7%
E01006361	Marsh Green East	Wigan	9	1608		5%	7%
E01006386	Scholes	Wigan	10	1672			7%
E01006305	Higher Ince	Ince	11	1723			7%
E01006336	Westleigh East	Leigh	12	1810			7%
E01006288	Shakerley	Tyldesley	13	1884			7%
E01006327	Plank Lane/Crankwood	Leigh	14	1888			7%
E01006248	Higher Folds North	Leigh	15	2034			7%
E01006213	Platt Bridge North	Platt Bridge	16	2681			
E01006239	Hag Fold South	Atherton	17	2720			
E01006289	Hag Fold East	Atherton	18	2812			
E01006275	Chapel Fields Estate North	Hindley	19	2906			
E01006215	Platt Bridge North East	Platt Bridge	20	2993			
E01006369	Springfield/Wigan Town Centre	Wigan	21	3065			

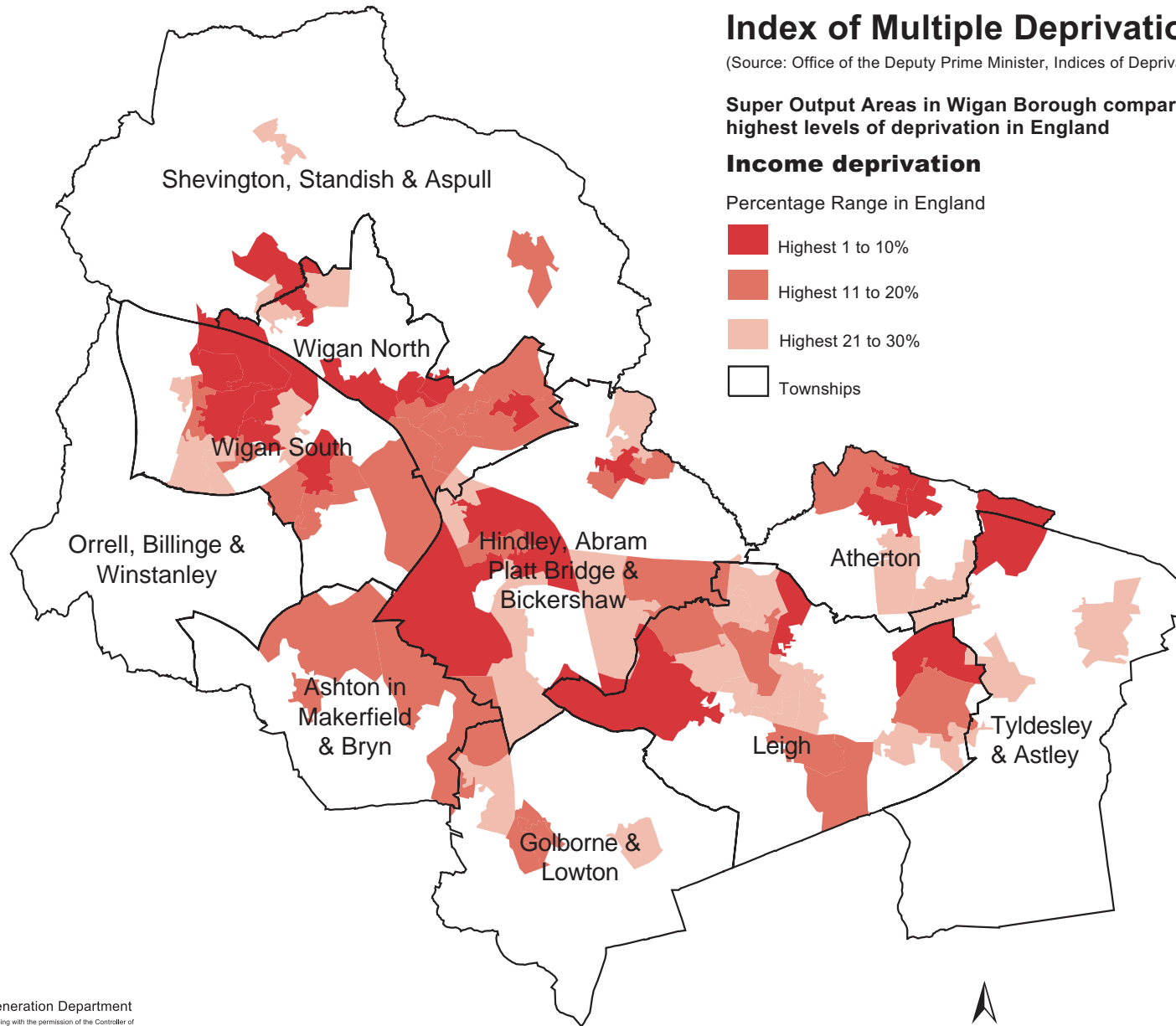
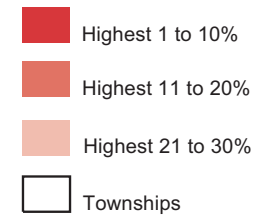
# Index of Multiple Deprivation 2004

(Source: Office of the Deputy Prime Minister, Indices of Deprivation 2004)

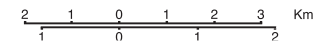
**Super Output Areas in Wigan Borough compared with the highest levels of deprivation in England**

## Income deprivation

Percentage Range in England



Planning and Regeneration Department  
 Based on the Ordnance Survey Mapping with the permission of the Controller of Her Majesty's Stationery Office © Crown Copyright. Unauthorised reproduction infringes Crown Copyright and may lead to prosecution or civil proceedings.  
 Wigan MBC Local Authority Licence No 100019578\_04



### 3.3 Employment Deprivation Domain

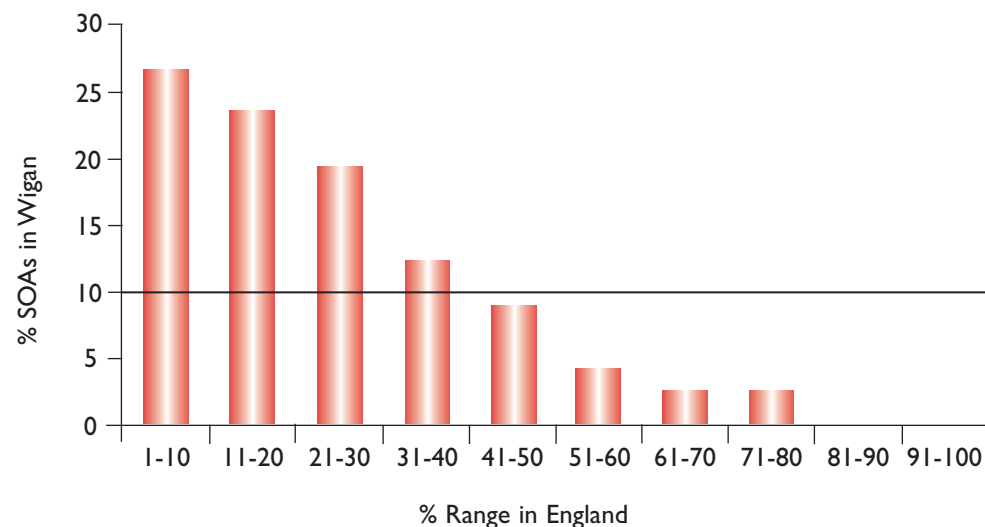
This domain measures employment deprivation conceptualised as involuntary exclusion of the working age population from the world of work.

- Unemployment claimant count (JUVOS) of women aged 18-59 and men aged 18-64 averaged over 4 quarters (2001)
- Incapacity Benefit claimants woman aged 18-59 and men aged 18-64 (2001)
- Severe Disablement Allowance claimants woman aged 18-59 and men aged 18-64 (2001)
- Participants in New Deal for the 18-24s who are not included in the claimant count (2001)
- Participants in New Deal for the 25+ who are not included in the claimant count (2001)
- Participants in New Deal for Lone Parents aged 18 and over (2001)

In the Employment Deprivation Domain the main characteristics in the Borough are:

Percentage Range in England	Number of SOAs in Wigan	Percentage Range in England	% SOAs in Wigan
1 to 10%	53	highest 10%	26.5
11 to 20%	47	highest 20%	50.0
21 to 30	39	highest 30%	69.5
31 to 40%	25	highest 40%	82.0
41 to 50%	18	highest 50%	91.0

ID 2004 Employment Domain - SOAs in Wigan



## Indices of Deprivation 2004 - Employment Deprivation Domain - Areas in the Highest 10% in England

SOA No.	SOA Name	Town/area	Employment Wigan Rank	Rank of Employment Score in England	Within highest % in England		
E01006386	Scholes	Wigan	1	165	3%	5%	7%
E01006351	Worsley Hall	Wigan	2	226	3%	5%	7%
E01006248	Higher Folds North	Leigh	3	431	3%	5%	7%
E01006360	Marsh Green West	Wigan	4	432	3%	5%	7%
E01006350	Worsley Hall North	Wigan	5	461	3%	5%	7%
E01006357	Norley East	Wigan	6	497	3%	5%	7%
E01006336	Westleigh East	Leigh	7	540	3%	5%	7%
E01006306	Darlington Street East	Wigan	8	605	3%	5%	7%
E01006254	Beech Hill West	Wigan	9	610	3%	5%	7%
E01006239	Hag Fold South	Atherton	10	627	3%	5%	7%
E01006411	Worsley Mesnes North	Wigan	11	661	3%	5%	7%
E01006305	Higher Ince	Ince	12	665	3%	5%	7%
E01006361	Marsh Green East	Wigan	13	700	3%	5%	7%
E01006392	Scholes/Birkett Bank	Wigan	14	711	3%	5%	7%
E01006240	Hag Fold North	Atherton	15	890	3%	5%	7%
E01006215	Platt Bridge North East	Platt Bridge	16	914	3%	5%	7%
E01006327	Plank Lane/Crankwood	Leigh	17	991		5%	7%
E01006289	Hag Fold East	Atherton	18	1107		5%	7%
E01006270	Smithwood	Hindley	19	1135		5%	7%
E01006267	Wentworth	Bryn	20	1155		5%	7%
E01006369	Springfield/Wigan Town Centre	Wigan	21	1163		5%	7%
E01006241	Hag Fold West	Atherton	22	1196		5%	7%
E01006213	Woodcock Drive Estate	Platt Bridge	23	1335		5%	7%
E01006288	Shakerley	Tyldesley	24	1440		5%	7%
E01006296	Siddow Common	Leigh	25	1479		5%	7%
E01006213	Platt Bridge North	Platt Bridge	26	1588		5%	7%
E01006307	Rose Bridge	Ince	27	1628			7%
E01006309	Lower Ince/Ince Green Lane	Ince	28	1749			7%
E01006275	Chapel Fields Estate North	Hindley	29	1908			7%
E01006344	Derby Road Estate East	Golborne	30	1958			7%
E01006324	Lakeside/Firs lane	Leigh	31	1974			7%

SOA No.	SOA Name	Town/area	Employment Wigan Rank	Rank of Employment Score in England	Within highest % in England
E01006308	Higher Ince/Manchester Road	Ince	32	2051	7%
E01006408	Worsley Mesnes South	Wigan	33	2052	7%
E01006397	Kitt Green	Wigan	34	2109	7%
E01006310	Lower Ince	Ince	35	2113	7%
E01006217	Spring View	Spring View	36	2145	7%
E01006274	Chapel Fields Estate South	Hindley	37	2166	7%
E01006405	Poolstock/Worsley Mesnes	Wigan	38	2203	7%
E01006311	Belle Green/Higher Ince	Ince	39	2208	7%
E01006235	Holly Road Estate	Aspull	40	2236	7%
E01006356	Norley West	Wigan	41	2238	7%
E01006323	Wigan Road West	Leigh	42	2418	
E01006352	Newtown	Wigan	43	2438	
E01006253	Beech Hill/Giants Hall Road	Wigan	44	2679	
E01006246	Marsland Green/Hooton Green	Leigh	45	2940	
E01006358	Worsley Green/Pemberton	Wigan	46	3020	
E01006353	Tunstall Lane/Newtown	Wigan	47	3024	
E01006297	Warrington Road West	Leigh	48	3045	
E01006262	Landgate	Bryn	49	3062	
E01006283	Westleigh West	Leigh	50	3085	
E01006322	Tamer West	Leigh	51	3141	
E01006284	Tamer East	Leigh	52	3179	
E01006354	Worsley Hall South	Wigan	53	3240	