

Report to: Cabinet
Date: 29th May 2008
Subject: Wigan's draft Local Area Agreement
Report of: Chief Executive
Contact officer: Alan Dunn x 2773

Purpose / summary: To inform Cabinet of Wigan's current draft Local Area Agreement and the proposed priorities, indicators and targets contained therein. To request Cabinet to endorse the draft agreement.

Alternative options considered and reason for selecting the one recommended:

Recommendation / decision: That Cabinet endorse the draft Local Area Agreement and agree that it be submitted to Government Office North West. That the Service Director Business Transformation be given approval to negotiate any outstanding targets with GONW and then to finalise the agreement. The agreement to then be agreed and signed by the Wigan Borough Partnership before being submitted to Government Office North West.

Risks / Implications:

Financial:	Within existing resources.
Staffing:	None directly from this report
Policy:	The LAA has been developed in line with the Sustainable Community Strategy and Council's Corporate Plan.
Equal Opportunities - Has a Diversity Impact Assessment been conducted?	Yes, a full equality and diversity assessment is underway and will be developed along with the LAA.

Wards affected:

All wards.

Property Implications – Does the proposal involve a reduction, addition or change to the Council’s asset base or its occupation?

No

If yes, have the property implications been agreed with the Corporate Property Officer?

N/A

Does this proposal have significant implications for the Council and the local population?

Yes – in the way that services will be delivered by key public service providers in the next three years. In addition, a full equality diversity assessment of the LAA is being developed which will identify significant implications and necessary actions for the population.

Does this proposal involve a new policy or procedure or significant changes to an existing policy or procedure?

No

Has the Service Director - Borough Solicitor confirmed that the recommendations within this report are lawful and comply with the Council’s Constitution? **Yes**

Has the Executive Director Business Support Services confirmed that any expenditure referred to within this report is consistent with the Council’s budget? **Yes**

Are any of the recommendations within this report contrary to the Policy Framework of the Council? **No**

* delete which applicable

For Cabinet reports only :

Categorisation of the report:	X
Discussion leading to a decision	X
Monitoring	
Sharing for corporate understanding	

	X
Discussion	
Decision	
Information	

Tracking/Process:

	Consultation	Ward Members	Partners
Panel	Overview & Scrutiny	Cabinet	Council
Report to Audit Governance and Improvement review Committee : Early draft version 20.3.08			

1.0 Background:

- 1.1. Members will be aware that Wigan was one of the first LAA pilot authorities in 2005. This agreement has now concluded and we are currently drawing together the final year end performance assessment. However even at this stage we can conclude that the agreement has been a great success in achieving improved outcomes for local people and demonstrating effectiveness in partnership working.
- 1.2. The benefits that we have drawn from the first LAA put us in a great position to submit our new, draft LAA to Government office. The new draft agreement has been produced by the Local Strategic Partnership (LSP) supported by Council officers and key partners and stakeholders.
- 1.3. Local Area Agreements set out the priorities for a local area based on an area's Sustainable Community Strategy (you may remember this as the Community Plan). The agreement is made between central Government, represented by the Government office (GO) and a local area.
- 1.4. You can see details of the LAA objectives and priorities in the appendices. But in summary the aspiration of the LSP is to narrow the inequality gap and through the interventions of the LAA provide life changing opportunities for local residents.
- 1.5. The Sustainable Community Strategy (SCS), which was previously referred to as the Community Plan, is a long-term vision for an area and its people. It aims to create a sustainable community by addressing economic, social and environmental needs.
- 1.6. Wigan's SCS is currently being reviewed as a result of consultation and engagement with communities, Members, the Wigan Borough Partnership, other key partners and agencies, GONW and Council officers. This same consultation has informed the development of the draft LAA.

Essentially the LAA will be the action plan to achieve the SCS vision.

2.0 Content and format of the Local Area Agreement.

- 2.1. The Local Government & Public Involvement in Health Act 2007 has prescribed the requirements for the LAA in conjunction with the government's new performance framework. The LAA will therefore have up to 35 agreed local priorities (designated targets) together with 16 statutory DSCF targets. The 35 local priorities must be drawn from the new National Indicator Set.
- 2.2. In addition to the agreed local priorities we are obliged to also specify :
 - The persons/partners to whom the target is to relate and
 - The period for which the local area agreement is to have effect.

Accordingly, this has been done in the draft LAA document template (attached at appendix 2) in the format prescribed by the Department for Communities and Local Government.

3.0 Current position

- 3.1. Wigan's LAA has been developed from a strong evidence base and challenge process undertaken with our key partners and stakeholders. This has ensured that the identified local priorities are those which need the greatest focus over the next three years. By acting in the priority areas we will ensure that we deliver joined up services to tackle those issues which really matter to the people and communities of Wigan.
- 3.2. The draft details the "Wigan Story" (appendix 1) and thinking behind the development of the LAA. It then lists (as prescribed) our local priorities and targets. The document template (Appendix 2) also contains our "local" indicators and targets.
- 3.3. There can only be up to 35 designated targets. The draft contains 34, which are marked with an asterix. The distinction between the designated targets (which have been negotiated with GONW) and the local targets is the way in which they may be amended. This distinction will be set out by the Secretary of State (SoS) when approving the LAA, but essentially those designated targets approved by the SoS may not be amended or dropped without approval from the SoS. The non- designated or local targets, may be amended or dropped without approval.
- 3.4. The designated and local targets are of equal importance to the Council and the LSP and do carry the same legal weight – i.e partners and the Council will be required to have regard, in the exercise of their functions, to both designated and non-designated targets which they have signed up to help deliver.
- 3.5. The "local" indicators are those which have been agreed are important to the Council and the LSP partners in order to assess our performance against the LAA priorities and are those which the partners will therefore consider as part of their own performance management processes. These indicators will not be reported to GONW and central government.
- 3.6. Members will be aware that the LAA attracts a performance reward grant if targets are achieved. The same principles will apply to the new LAA, however, the methodology by which this will be allocated has yet to be released by central government for consultation. We do know that some targets will receive performance reward grant through their association with the Working Neighbourhood Fund, and these have been identified in the template (Appendix 2).

4.0 Further development and negotiation.

- 4.1. Members are asked to note that the LAA does need further development and negotiation around some of the targets and the baseline performance data. This is because at the time of writing, further data was required at the National level to support the new National Indicator set. In addition, we are also awaiting further data and guidance from central government in relation to survey methodologies in relation to some of the perception indicators and

hence it may not be possible to set baselines and targets in those areas until the first year of the LAA has elapsed.

- 4.2. Similarly, some of the statutory DSCF targets are absent for the third year of the LAA. This is because the department has indicated that it will negotiate final year targets for our LAA in 2009.

5.0 Recommendations.

- 5.1. The LAA is welcomed by the Council and its partners. We recognise and celebrate the opportunity that such an agreement can bring to facilitate more effective partnership working for the benefit of the Borough's residents.
- 5.2. Cabinet are requested to endorse the draft Local Area Agreement and agree that it be submitted to Government Office North West.
- 5.3. Cabinet are also asked to confirm that the Service Director Business Transformation be given approval to negotiate any outstanding targets with GONW and then to finalise the agreement. The agreement to then be agreed and signed by the Wigan Borough Partnership before being submitted to Government Office North West.



WIGANBOROUGH**PARTNERSHIP**

Developing the new LAA for Wigan: 2008

Our local story



I. Introduction

Canals, coal and cotton: the story of Wigan has always started with the community memory of our industrial and social heritage. We see ourselves as an area independent local communities and a clear sense of place and identity – having strong public services and a focus on making the most of our assets. As a place however, we also recognise that we are changing rapidly – responding to regional and national trends – but also adapting to changes in local population and the needs of our local neighbourhoods.

The focus of our current new Local Area Agreement analysis is based on a growing understanding of the differences between the distinct parts of this community which includes districts of growing prosperity alongside neighbourhoods of long term need and deprivation.

In general terms we know that people are:

- Living longer
- Better educated
- More likely to be in work than 20 years ago

- but we also face a range of challenges:

The Challenges facing the Wigan Partnership

Deprivation: In 2000 Wigan was ranked 63rd most deprived local authority in England. By 2004 we had slipped to 53rd most deprived. However by 2007 Wigan had regained some ground and was ranked as 67th most deprived local authority in England.

Life expectancy: Male life expectancy is still 1.8 years below average and women's 1.7 years (2003-5 data). The biggest causes of shortened life expectancy in Wigan are coronary heart disease, digestive diseases (inc. cirrhosis), stroke, lung cancer and respiratory disease. Early deaths attributed to cancer are significantly worse than the National average.

Disease: Prevalence of stroke and transient ischemic attack is actually about average, but although falling, early death from heart disease and strokes are significantly higher - 29 per 100,000 higher in Wigan. Deaths from smoking are nearly 60 per 100,000 higher in Wigan (than the national average)

Obesity: Although a lower % of women were obese in 2006 than the national average (21% against 25%) this is a 7% increase over 5 years in Wigan compared to a 3.6% increase nationally. The picture is similar for men with a 5.2% increase over 5 years compared to a 1% increase nationally.

Childhood obesity in 2006 still appears to be lower than both the North West and England average.

Ageing population: Wigan is ageing. By 2015 there will be 5,300 more women over 65 in Wigan than there will be in 2008, and almost 6,000 more men.

The impact of Wigan's longstanding problem of limiting long term illness is starting to catch up with us. By 2015 there will be in excess of 6,000 more older people who have had a long term, limiting illness, and by 2025, 12,000 more than next year.

Alcohol: Women drinking over the recommended weekly level increased from 10% in 2001 to 26% in 2006 and for adult males 30% in 2001 to 36% in 2006. Binge drinking is also a problem and is particularly common in younger groups. Wiganers are 3.5% more likely to binge drink than the national average. Differences in both alcohol consumption and health outcomes related to alcohol appear to be gender related. Although it is Wigan men who lose more years of life because of alcohol, (both men and women have very high rates of hospital admissions due to alcohol compared to national figures), the biggest gap is for females, with hospital admission for alcohol specific conditions in 2006 which were almost twice the national average (260.36 per 100,000 compared to 144.62 per 100,000 nationally).

Teenage pregnancy: Despite interventions, the under - 18 conception rate in Wigan increased to 58.5 per 1000 females aged 15-17 in 2005 but the England average fell to 41.1 leading to a widening of the gap between Wigan and England. The North West average is now 46.4 per 1000.

Attainment: On average, pupils from the more disadvantaged groups have a lower attainment than the Borough average at every key stage.

This is particularly true of boys living in the most deprived areas of the Borough.

Skills & Qualifications: Only 20.4% of Wigan's residents are qualified to NVQ level 4 and above compared with 24.8% in the North West and 27.1% in England.

Accessing higher education: Between 1999/2000 and 2005/06 Wigan has seen a 14% increase in the number of full-time entrants to higher education compared with the North West at 17% and England at 18%. People living in deprived areas are still less likely to enter higher education.

Employment: In the most deprived 3% Super Output Areas people only have a 50% chance of

being in work. Nearly 20% of people in these areas have not worked since before 1991 – twice as high as the national average. 8.4% have never worked, and 30% of people in these areas have a registered longstanding illness – almost twice the national average.

Income: The median weekly gross pay for a Wigan resident is £52 lower than average for England and £27 lower than the North West. The gap is wider for men.

Benefit claimants: Wigan's working age benefit claimants rate remains significantly higher than England but the gap has narrowed. However, there is a significant gap between Wigan's deprived areas compared to the rest of the borough and England and there is no evidence that this gap is narrowing.

Long term sickness: Incapacity Benefit claimant rate in parts of Wigan is staggeringly high with 22.89% of those in the 3% most deprived SOA's claiming Incapacity Benefit. The general rate in Wigan is 11.13% against a national average rate of 7.13%. The rate of benefits claimants with a mental health problem is 35.2 per 1,000 people of working age – significantly higher than the England average.

Economic activity of people with a disability: The figure for Wigan stands at 43.1%, compared to 47.6% in the North West and 55.3% in England.

Getting around: Whilst car ownership in Wigan is average for England and the North West, 57% of those in the 3% most deprived areas have no access to a private vehicle. Overall, only 14% of people use public transport (bus or train). Wigan has the lowest use of public transport within greater Manchester and it is still declining. Recent surveys indicate ongoing community concern about local transport and congestion issues: a 2006 survey found that over 80% of all car journeys were to local destinations within the Borough.

Homelessness: Homelessness remains a problem in the borough and is still relatively high per head of population. Wigan is 7th highest for homelessness in England and the 14th highest rate per head of population.

Housing affordability: Although our affordability ratio has worsened in recent years to 5.45 – it still compares favourably to the England average of 7.12 (2006 data).

Parks and open spaces: Satisfaction with Wigan's parks and open spaces deteriorated from 65% in 2004 to 62% in 2007. Conversely the England average improved from 71% in 2004 to 73% in 2006.

Crime and Grime: The British Crime survey 10 (BCS 10) states that the crime gap between the borough average and the 10% most deprived Lower Super Output Areas has increased from 67.4% in 2005/2006 to 82.3% in 2006/07 – inequality is widening.

Local concerns include re-offending rates – where it is estimated that 50% of all crime is committed by just 10% of repeat offenders. A disproportionate number of the boroughs 1700+ offenders live within the top 3% and 10% most deprived neighbourhoods.

Litter: 20% of Wigan’s land and highways had unacceptable levels of litter and detritus in 2006/07 compared with 32% in 2005/06

Sustainability: The ecological footprint of the average Wigan resident is estimated at 5.35 hectares, (similar to the England average but more than the sustainable global "allowance" of 1.88 per person). Wigan's overall "natural environment" ranking in 2005 was 264th out of 345 authorities, though 70% of the borough is classified as green space. Poor air quality from traffic pollution is a problem as 10% of the population live near major roads and 82% of the borough's working residents travel to work by car. Around 9% of total waste arisings come from domestic households and levels in Wigan (at 523 kg per person) and the local recycling/composting rate (at 21.9%) are worse than national averages. On average, Wigan residents emit 6.1 tonnes of CO2 per year (similar to most of the Greater Manchester boroughs but much higher than the global average of with 36% of these emissions coming from industry and commerce in the borough, 34% from domestic households and 29% from road transport.

2. So what does this mean for our Borough?

We face multi – dimensional challenges. In addressing these we need to reflect the diversity of our neighbourhoods and the lives of individuals.

Our early Community Plan vision in 2001 was based on 3 key elements:

“Investment in **People** and **Place** – leads to a long term improvement in our **quality of life / lifestyle** and the image and perception of the Borough”

Since then our Community strategy and our vision has developed and matured:

“**A place where people matter and you can afford to live the life you want**”

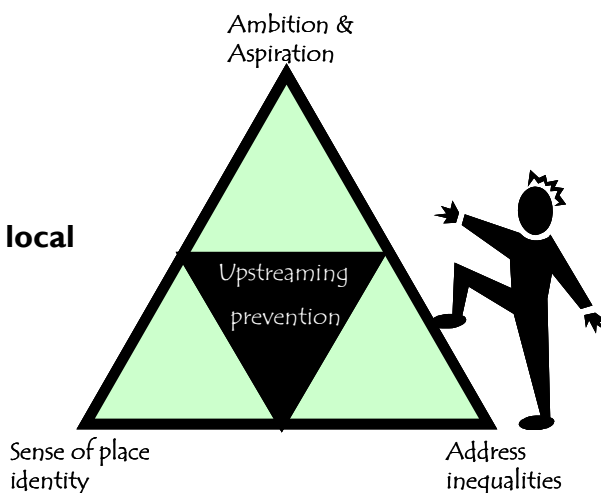
In developing our LAA (2008/2011) we have once again re-visited our long term vision. We recognise the need to better understand how needs and issues align in local neighbourhoods, within communities and households in order to help ensure that the action we take in the LAA will be effective. What we have tried to think about is how we can understand more about the diverse issues we face and how the LAA will make a real impact. We know that simply doing more of the same things that we have always done will not work. We also know that the days of short term regeneration programmes with extra resources are over.

We know we want to concentrate on ‘adding life to people’s years’ as well as ‘years to people’s lives’. Issues such as isolation lead to worsening medical conditions for some individuals and can affect the quality of life generally for others.

Lack of aspiration and poor lifestyle choices combine with multi-generational poverty to create a wide gulf in health and social inequalities. Feelings of involvement, belonging and being ‘in-control’ will help break some of the patterns established. This has informed our three cross-cutting themes.

3. Our 3 key cross-cutting themes:

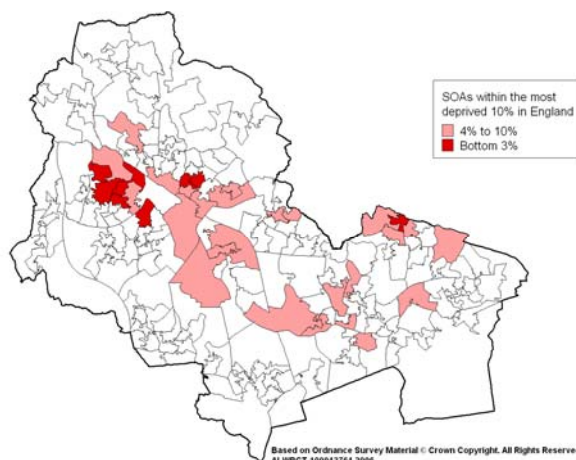
- **Tackling inequalities**
- **Raising ambitions and aspirations**
- **Promoting a sense of community and local identity**



3.1 Tackling inequalities

Beneath the Borough-wide statistics we recognise that our local neighbourhoods vary dramatically. Some are comparatively affluent but many have high levels of need. We have already used recent programmes to target these 10 most deprived “priority” SOAs. Closing the gap between these 2 extremes is a key focus for our LAA – and a key strand in our Wigan story.

10 most deprived neighbourhoods	10 most affluent neighbourhoods
Norley Hall	Shevington (2)
Worsley Hall (2)	Standish (2)
Marsh Green	Lowton (2)
Scholes (2)	Astley (2)
Worsley Mesnes	Hindley
Hag Fold (2)	Ashton
Westleigh	



	Of the 400	Out of Least deprived 200	Out of Most deprived 200
Health	Claim incapacity benefit	10	46
	Have a limiting long-term illness	25	62
	Smoke	29	75
	Have a drug problem	4	12
Education	Get at least 5 GCSEs A to C	154	60
	Stay on at school after 16	79	37
	Claim free school meals	4	82
Work	Become a professional or manager	61	18
	Work full time	117	62
	Live on benefits	17	88
Home and family	Go home to Council House	1	145
	Are part of lone parent family	17	76
	Have no access to car or van	14	114
Experience of crime	Burglary	2 per year	3 per year
	Domestic Violence	1 every 7 years	2 per year
	Deliberate Fire	1 every 3 years	3 per year
And finally	Live alone as a pensioner	51	94
	Live to the age of	77 if male 83 if female	70 if male 75 if female

We wanted to bring alive the complex issues of inequality during our consultation for the New LAA (2008/2011) priorities so we talked to local people about how the life chances of new babies born in these top ten areas would compare over time. If NOTHING CHANGES then this is what will happen to the 400 babies

These statistics tell a challenging picture about the difference in quality of life and life opportunities between our neighbourhoods. For some issues the picture is mixed (some things better, some things worse each year) and for some issues we can see that the borough average is getting better. We also understand that life is improving in both disadvantaged as well as affluent neighbourhoods.

However the gap does not seem to be narrowing – and we recognise that the gaps are both wide and multi-dimensional – AND that they have been a persistent feature for many years; transmitted from generation to generation.

We are developing local information systems with key partners that will help us effectively commission services to reduce inequality and in turn to target interventions appropriately.

This will also enable us to identify more clearly those people or groups who are at risk and/or would benefit the most from support and assistance in a way which is personalised to meet their needs.

We want this LAA to help us address the key problems in neighbourhoods of highest need. We know that this can help us deliver improved health and life chances in affordable homes in safe, clean and sustainable neighbourhoods.

We feel strongly that all people should have access to the same high quality services that other areas enjoy. We know that this will only work if we become more pro-active: using the opportunities of an early intervention led approach to help us address these overlapping problems.

3.2 Raising aspirations and ambition

Young people are the key to our future prosperity and that one of our biggest challenges is to create a new climate of ambition and personal aspiration.

We've been concerned that young people are not achieving their full academic potential at school (evidenced by the wide variation in performance tables between different areas) – and even more concerned at the numbers who leave school and then disappear from education, employment or training. Wigan's first LAA (2005/2008) included targets and indicators in these areas. We recognise that improving skills and aspirations will be vital for the future economic vitality of this Borough.

The “Local Futures” of the Borough in 2003 and 2005 highlighted our poor relative performance in skill levels for the emerging knowledge economy. Wigan ranked 297th out of 408 districts nationally. The proportion of working age people with ‘higher end’ skills in Wigan (19.5 per cent) is well below the average for Great Britain (25.7 per cent), Greater Manchester (23.07 per cent) and the North West (22.9 per cent). At the other end of the scale, the proportion of the population with either no qualifications, or qualified to NVQ Level 1 or equivalent (35.2 per cent) is lower than the regional (36.8 per cent) figure but on a par with national (35.1 per cent) and sub-regional (32.4 per cent).

Although we've made some improvements in relation to teenage pregnancy and sexual health we recognise that we've not reduced this in line with the national trend. Binge drinking affects over half of 18 – 24 year olds and is a concern for many younger people as well and it is a factor in much of the reported anti social behaviour.

We want this LAA to help support young people to be ambitious and to make informed life choices – whether in terms of work or their personal and social life – as well as promoting a wider range and choice of positive activities that are easy to access.

3.3 Promoting a sense of community and identity

The Borough has a very stable population base. The 2006 General Survey reported that 92% of people had lived in the same area for over 3 years. Results from our most recent Citizen's Panel (2007) paint a positive picture of how local people see the Borough:

- A good place to live (87%)
- Strong public services (79%)
- Real community spirit (61%)
- Dynamic and forward thinking (60%)
- A good place for business (59%)

People also think health is getting better (43%) – but that transport is getting worse. (36%) They also say that the top 3 issues for the next generation are:

- standard of living (52%)
- education (42%)
- health (34%)

The 2006 General Survey recorded the views of local people on the issues that needed improving most. They were:

- Activities for teenagers
- Traffic congestion
- Crime
- Street cleanliness

To address some of these broader issues including traffic congestion we are working with the Association of Greater Manchester Authorities on the production of a Multi Area Agreement (MAA). This is particularly relevant here in the context of the emerging priority related to the Transport Innovation Fund (TIF) Bid and associated public transport improvements. The key proposition is to remove transport as a constraint to economic growth. The Transport Innovation Fund bid will provide a mechanism to tackle congestion and improve connectivity between the communities of Wigan and Greater Manchester and the employment hotspots. We are also linked in to the MAA in relation to the regional proposals for ensuring sustainability and sustainable growth, recognising that these are issues which can be tackled at both local and regional level. Our LAA targets will contribute to the MAA and it is recognised that there will be a synergy of activity at the sub- regional level, through activities aimed at delivering the MAA which will bring benefits to the Wigan partnership.

With regard to participation levels in local communities, almost half (49%) of our Citizen's Panel said they were not involved in their local community; 41% were fairly involved and 3% were very involved (6% did not know/did not provide an answer). 33% of people said they had volunteered their free time to support people, activities or events in the Wigan Borough in the last 12 months.

Wigan has a large number of community groups and community activity (with significant levels of volunteering) – even though we have a lower number of large voluntary service agencies than other comparable districts. A recent external review of the sector suggested that the reason for this pattern was largely related to our dispersed settlement pattern and large overall area.

The LSP has been working closely with the 3rd sector (via a formal liaison committee) in order to develop a collective approach to building capacity and to enable the sector to play a full active role both in future delivery of services as well as the planning and engagement of local people.

The borough is clearly undergoing significant and rapid demographic change. The school census for 2007 suggests that 51 languages other than English are now spoken as a first language by pupils in Wigan schools. The latest figures of national insurance registrations by non-UK nationals in Wigan show that the number has increased 170% since 2002/3 and by 20% since last year. Population estimates suggest that since the census in 2001 Wigan has received approximately 6,400 migrants (the majority being in the 16 – 34 age range). Our recent work in updating our local cohesion framework clearly recognises that cohesion is not simply about race – and that we need to be pro-active to ensure that all sections of our local communities can feel confident and welcomed where they live.

We recognise that the changing population profile will become increasingly important for the Borough - and that there will be impacts for all services. Although we have established formal and informal arrangements for working with the BME sector and other minority communities we

understand that further work is still needed to help ensure that we can address the changing needs of these communities.

4. Tackling the root causes of our local problems through a preventative approach: our emerging priorities

As we've described so far our LAA recognises a series of key issues facing our Borough. We also understand that there are a number cross cutting "challenges" that need to be central to the way we understand and address them.

Our thematic Partnerships, Township Forums and Community Networks have all contributed to this understanding and will continue to contribute to the action plan at the centre of our new LAA (2008/2011). We think that our approach will work best if we use the LAA as a long term investment in local communities that builds different relationships with local people and a shared responsibility for transforming our Borough.

We have worked hard to ensure that the right organisations, stakeholders, people and collective partners and partnerships have been fully engaged, consulted and actively involved in the preparation of Wigan's new LAA and draft priorities. This will continue to develop throughout the LAA formation, action planning and implementation phases. In addition, all partnerships and all partners have adopted a way of working which is underpinned by the following principles:

- A preventative approach to stop problems developing within communities
- Targeting within priority neighbourhoods and groups that enables effective early intervention
- Development that enables us to meet our local needs without compromising the ability of future generations to meet their own

In practice the LSP's Strategic Management Group will take overall responsibility for delivery and for performance management. The LSP Board's role will focus on impact assessment and scrutiny of the LAA.

We've created a provisional list of **evidence based priorities** that our local delivery partnerships have determined will be at the centre of their own strategic work. These partnerships will take the lead for this work. The priorities will be the mainstream element of the LAA and different approaches to the way we work together and collectively commission services are being developed. This, along with our revised governance and capacity building arrangements will ensure that we will effectively tackle the priority issues. In some instances it is recognised that additional resources will be required.

These priorities have been sorted into **8 main outcomes** and these are being refined as but we the LAA develops.

	Outcomes
1.	Developing an ambitious community. Improve skills to meet business needs
2.	A stronger community that provides positive activities for all
3.	Affordable homes in safe and sustainable neighbourhoods
4.	Living longer with a better quality of life: addressing inequality
5.	Improve community confidence, participation and cohesion
6.	Developing strong skills in the community which meet business needs and support a sustainable local economy.
7.	Connecting people and services: Getting round more easily – and more sustainably
8.	Improve the aspirations, attainment and life chances of children and young people from our most disadvantaged communities

These outcomes reflect both shared concerns and needs – but they also present significant opportunities for generating new shared work and developing our inter partnership and cross sector work and relationships by:

- Utilising the strengths of a broad range of partners in tackling complex issues
- Establishing clear leadership roles in the LSP for bringing together shared action against key targets
- Adding value to our local partnership work
- Generating a new culture of challenge, scrutiny and improvement around the most intransigent issues – balancing a rigorous evidence based approach – with support for innovation (and risk taking) – alongside a new form of rapid learning that evaluates as we go
- Ensure that we focus our attention on individuals and neighbourhoods with greatest need and that we evaluate the impact of doing so precisely and quickly.
- Strengthening the capacity of the single performance management framework for our partnership.

*This LAA provides the best opportunity in a generation for us to reduce inequalities, promote a sense of community and raise local ambitions for the 21st century.
We look forward to the challenge.*

Peter Smith
Leader of Wigan Council
Chair of Wigan Borough Partnership

Wigan's Local Area Agreement Submission Template

Priority ref	Priority	Indicator(s), including those from national indicator set (shown with a *)		Baseline	LAA Improvement Target, including those to be designated (shown with a *), and including education and early years targets			GONW Tracker Status	Partners who have signed-up to the target and any which are acting as lead partner/s (shown with a *)
					08/09	09/10	10/11		
I	Improve access to sustainable transport, support independence and reduce traffic congestion	*167	Congestion - average journey time per mile during the morning peak		No increase in congestion for the forecast increase in throughput miles of 1.5% on the routes by the end of LTP 2. If the change in throughput proves to be greater than forecast, then we aim to achieve change in the congestion indicator 1.5 percentage points lower.	No increase in congestion for the forecast increase in throughput miles of 1.5% on the routes by the end of LTP 2. If the change in throughput proves to be greater than forecast, then we aim to achieve change in the congestion indicator 1.5 percentage points lower.	No increase in congestion for the forecast increase in throughput miles of 1.5% on the routes by the end of LTP 2. If the change in throughput proves to be greater than forecast, then we aim to achieve change in the congestion indicator 1.5 percentage points lower.	C3 Agreed indicator-targets agreed by GO and LA.	Wigan Council * Primary Care Trust

Appendix 2 – 29 May 2008

Priority ref	Priority	Indicator(s), including those from national indicator set (shown with a *)		Baseline	LAA Improvement Target, including those to be designated (shown with a *), and including education and early years targets			GONW Tracker Status	Partners who have signed-up to the target and any which are acting as lead partner/s (shown with a *)
					08/09	09/10	10/11		
		*175	% people who have access to services and facilities by public transport, walking and cycling	Primary Schools 98.95% Secondary Schools 98.24% GP's 96.53%	Primary Schools 99.29% Secondary Schools 98.24% GP's 96.53%	Primary Schools 99.63% Secondary Schools 98.24% GP's 97.03%	Primary Schools 100% Secondary Schools 98.24% GP's 97.53%	C2 – Agreed indicator – targets under discussion.	Wigan Council * Primary Care Trust
		198 Local	Children travelling to school – mode of travel usually used (5-16yrs)						Wigan Council * Primary Care Trust
2.	Reduce early deaths and disability due to CHD, stroke and cancer	*120	All-age all cause mortality	2006 Wigan 716.58	740.00			C2 Agreed indicator – draft targets under discussion	Primary Care Trust * Wigan Council Leisure Trust Acute Hospital Trust
		*120a	All-age all cause mortality - female	2006 613.42, 2005 602.33, 2004 622.43	540	524	508	C2 Agreed indicator – draft targets under discussion	Primary Care Trust * Wigan Council Leisure Trust Acute Hospital Trust

Appendix 2 – 29 May 2008

Priority ref	Priority	Indicator(s), including those from national indicator set (shown with a *)		Baseline	LAA Improvement Target, including those to be designated (shown with a *), and including education and early years targets			GONW Tracker Status	Partners who have signed-up to the target and any which are acting as lead partner/s (shown with a *)
					08/09	09/10	10/11		
		*120b	All-age all cause mortality - male	2006 849.54, 2005 857.44, 2004 952.59	714	681	650	C2 Agreed indicator – draft targets under discussion	Primary Care Trust * Wigan Council Leisure Trust Acute Hospital Trust
		*123	Stopping smoking (rate of self-reported 4-week smoking quitters per 100,000 population aged 16 or over)	2006/07 Wigan 1032.11 { 2,550 quitters / (247,066/ 100,000) = 1032.11 }	1,189	1,297	1,405	C2 Agreed indicator – draft targets under discussion	Primary Care Trust * Wigan Council Leisure Trust Acute Hospital Trust
3.	Safeguarding, respect and dignity for vulnerable adults	*127	Self reported experience of social care users					C4 Agreed indicator – no target to be set in first year	Wigan Council* Primary Care Trust

Appendix 2 – 29 May 2008

Priority ref	Priority	Indicator(s), including those from national indicator set (shown with a *)		Baseline	LAA Improvement Target, including those to be designated (shown with a *), and including education and early years targets			GONW Tracker Status	Partners who have signed-up to the target and any which are acting as lead partner/s (shown with a *)
					08/09	09/10	10/11		
4	Provide care closer to home for people with long term conditions	*124	% people with a long-term condition who are supported by people providing health and social care services to be independent and in control of their condition					C4 Agreed indicator – no target to be set	Wigan Council* Primary Care Trust
5.	Reduce social exclusion for older people and other vulnerable adults	*138	% people over 65 who feel satisfied with both home and neighbourhood					C4 Agreed indicator – no target to be set	Wigan Council* Primary Care Trust
6.	Increase people's and community's perception of control over own lives or where they live	*7	Environment for a thriving third sector					C4 Agreed indicator – no target to be set	Wigan Council* Primary Care Trust Wigan and Leigh Housing

Appendix 2 – 29 May 2008

Priority ref	Priority	Indicator(s), including those from national indicator set (shown with a *)		Baseline	LAA Improvement Target, including those to be designated (shown with a *), and including education and early years targets			GONW Tracker Status	Partners who have signed-up to the target and any which are acting as lead partner/s (shown with a *)
					08/09	09/10	10/11		
		*130	Social Care clients receiving Self Directed Support per 100,000 population (Direct Payments and Individual Budgets)	2006/07 107.5			1102	C3 Agreed indicator-targets agreed by GO and LA.	Wigan Council * Primary Care Trust
7.	Reduce the level of worklessness	*153 WNF	Working age people claiming out of work benefits in the worst performing neighbourhoods	Q2 2007 Wigan 32.39, NW 33.49, England 31.22	31.4	30	28	C3 Agreed indicator-targets agreed by GO and LA.	Wigan Council* Primary Care Trust Job Centre Plus Probation service Wigan and Leigh Housing Wigan College Learning and Skills Council
8.	Increase levels of enterprise and inward investment	*171 WNF	VAT registration rate	2006 Wigan 26.6 NW 32.4, England 38.8				C4 Agreed indicator – no target to be set in first year	Wigan Council Business Link

Appendix 2 – 29 May 2008

Priority ref	Priority	Indicator(s), including those from national indicator set (shown with a *)		Baseline	LAA Improvement Target, including those to be designated (shown with a *), and including education and early years targets			GONW Tracker Status	Partners who have signed-up to the target and any which are acting as lead partner/s (shown with a *)
					08/09	09/10	10/11		
		Local	Visitor spend (£m's)	2006/07 Wigan £290.56 (millions) against target of £270.99 millions				Wigan Leisure and Culture Trust* Wigan Council	
9.	Increase skill levels with reference to business need	*163 WNF	% of working age population qualified to at least Level 2 or higher	2006 Wigan 61.68%, NW 66.97%, England 68.08%				C2 Agreed indicator – draft targets under discussion Wigan Council * Learning and skills Council	
		*164 WNF	% of working age population qualified to at least Level 3 or higher	2006 Wigan 40.95%, NW 46.54%, England 47.84%				C2 Agreed indicator – draft targets under discussion Wigan Council * Learning and skills Council	

Appendix 2 – 29 May 2008

Priority ref	Priority	Indicator(s), including those from national indicator set (shown with a *)		Baseline	LAA Improvement Target, including those to be designated (shown with a *), and including education and early years targets			GONW Tracker Status	Partners who have signed-up to the target and any which are acting as lead partner/s (shown with a *)
					08/09	09/10	10/11		
10.	Increase the overall supply of affordable housing to meet the needs of all its residents and the local economy	*154	Number of net additional homes provided	2006/07 Wigan 607	858	795	978	C2 Agreed indicator – draft targets for first two years under discussion	Wigan Council * Wigan and Leigh Housing
11.	To strengthen our weaker housing markets by increasing the choice and quality of the housing offer in these localities	*158	% non-decent council homes	2006/07 Wigan 15.9%	10%	6%	4%	C3 Agreed indicator-targets agreed by GO and LA.	Wigan Council * Wigan and Leigh Housing
12.	To better meet the needs of vulnerable and homeless people by investing in better prevention and support services	*156	Number of households living in temporary accommodation	2006/07 Wigan 65	60	30	19	C2 Agreed indicator – draft targets under discussion	Wigan Council * Wigan and Leigh Housing

Appendix 2 – 29 May 2008

Priority ref	Priority	Indicator(s), including those from national indicator set (shown with a *)		Baseline	LAA Improvement Target, including those to be designated (shown with a *), and including education and early years targets			GONW Tracker Status	Partners who have signed-up to the target and any which are acting as lead partner/s (shown with a *)
					08/09	09/10	10/11		
13.	To increase participation in community and cultural activities that improve the well being of individuals, and community cohesion	*1	% of people who believe people from different backgrounds get on well together in their local area	2006/07. Wigan 69%, NW 76%, England 78%	7.027%	71.5%	72.81%	C3 Agreed indicator-targets agreed by GO and LA.	Wigan Council * Wigan Leisure and Culture Trust
		*4	% of people who feel they can influence decisions in their locality	2006/07 Wigan 28% NW 32%, England 32%	29%	30%	31%	C2 Agreed indicator – draft targets under discussion	Wigan Council * Wigan and Leigh Housing Police Fire service Wigan Leisure and Culture Trust
		Local	Some aggregation of 9, 10 and 11		To be determined	To be determined	To be determined		Wigan Leisure and Culture Trust * Wigan Council
		Local	Visits to parks and open spaces		To be determined	To be determined	To be determined		Wigan Leisure and Culture Trust * Wigan Council

Appendix 2 – 29 May 2008

Priority ref	Priority	Indicator(s), including those from national indicator set (shown with a *)		Baseline	LAA Improvement Target, including those to be designated (shown with a *), and including education and early years targets			GONW Tracker Status	Partners who have signed-up to the target and any which are acting as lead partner/s (shown with a *)
					08/09	09/10	10/11		
14.	Improve the cleanliness and greenness of the borough	*195a	Improved street and environmental cleanliness (litter)	2006/07 combined litter and detritus = 20%	GONW suggest 10	GONW suggest 9	GONW suggest 7	C2 Agreed indicator – draft targets under discussion	Wigan Council Wigan and Leigh Housing Community Safety partnership
		*195b	Improved street and environmental cleanliness (detritus)		GONW suggest 10	GONW suggest 9	GONW suggest 7		
		*195c	Improved street and environmental cleanliness (graffiti)	2006/07 Wigan 13%	GONW suggest 5	GONW suggest 4	GONW suggest 3	As above	Wigan Council Wigan and Leigh Housing Community Safety partnership
		*195d	Improved street and environmental cleanliness (flyposting)	2006/07 Wigan 5%	GONW suggest 1	GONW suggest 1	GONW suggest 1	As above	Wigan Council Wigan and Leigh Housing Community Safety partnership

Appendix 2 – 29 May 2008

Priority ref	Priority	Indicator(s), including those from national indicator set (shown with a *)		Baseline	LAA Improvement Target, including those to be designated (shown with a *), and including education and early years targets			GONW Tracker Status	Partners who have signed-up to the target and any which are acting as lead partner/s (shown with a *)
					08/09	09/10	10/11		
15.	Improve the management of waste	*191	Residual household waste per head	2006/07 923kg per household	887	791	776	C2 Agreed indicator – draft targets under discussion	Wigan Council *
16.	Improve the Borough's performance in relation to climate change (and prepare to adapt to its impacts)	*188	Planning to adapt to climate change	No baseline figure	Level 2	Level 3	Level 4	C3 – indicator agreed – targets under discussion.	Wigan Council * Wigan and Leigh Housing
17.	Reduce teenage pregnancy and improve access to sexual health services WNF	*112	Under 18 Conception rate (% change from 1998)	2006 Wigan - 1.21%, NW - 12.54%, England - 13.29% 1998 rate at 52.9	-26% 39.3 (reported in 2009/10)	-38% 33.3 (reported in 2010/11)	-50% 26.8 (reported in 2011/12)	C3 Agreed indicator- targets agreed by GO and LA.	Wigan Council * PCT

Appendix 2 – 29 May 2008

Priority ref	Priority	Indicator(s), including those from national indicator set (shown with a *)		Baseline	LAA Improvement Target, including those to be designated (shown with a *), and including education and early years targets			GONW Tracker Status	Partners who have signed-up to the target and any which are acting as lead partner/s (shown with a *)
					08/09	09/10	10/11		
		Local	Percentage increase in number of young men accessing Sexual Health Services		10%	15%	20%		Wigan Council * PCT
		Local	Repeat pregnancies to teenage mothers lower than North West and National average	10%	To be determined	To be determined	To be determined		Wigan Council * PCT
		Local	Percentage increase in young people in areas of high deprivation accessing sexual health services		5%	10%	15%		Wigan Council * PCT
		Local	Percentage of teenage parents accessing Care to Learn childcare funding higher than North West and National average	20.97%	To be determined	To be determined	To be determined		Wigan Council * PCT

Appendix 2 – 29 May 2008

Priority ref	Priority	Indicator(s), including those from national indicator set (shown with a *)		Baseline	LAA Improvement Target, including those to be designated (shown with a *), and including education and early years targets			GONW Tracker Status	Partners who have signed-up to the target and any which are acting as lead partner/s (shown with a *)
					08/09	09/10	10/11		
		Local	Percentage of young women accessing Long Acting Reversible Contraception (LARC) higher than National average		To be determined	To be determined	To be determined		Wigan Council * PCT
18.	Enhancing children and young people's well-being with a particular focus on obesity, alcohol abuse and emotional resilience WNF	*56	Obesity among primary school age children in Year 6		16.9%	16.9%	16.9%	C3	Wigan Council * PCT
19.	Safeguard children and young people through improved prevention, early intervention and community engagement	*60	% core assessments for children's social care that were carried out within 35 working days of their commencement	2006/07 Wigan 43.98%, NW 80.21%, England 78.48%	75.10%	77.00%	83%	C3	Wigan Council * All Wigan Safeguarding Children Board agencies (PCT, WWL, 5 Boroughs, GMP, etc)

Appendix 2 – 29 May 2008

Priority ref	Priority	Indicator(s), including those from national indicator set (shown with a *)		Baseline	LAA Improvement Target, including those to be designated (shown with a *), and including education and early years targets			GONW Tracker Status	Partners who have signed-up to the target and any which are acting as lead partner/s (shown with a *)
					08/09	09/10	10/11		
20.	Improve outcomes for Children in Care	*63	Stability of placements of looked after children: length of placement	2006/07 Wigan 65.1%, NW 67.00%, England 66.0%	75%	77%	80%	C3	Wigan Council All Wigan Safeguarding Children Board agencies (PCT, WWL, 5 Boroughs, GMP, etc)
21	Narrow the attainment gap between our most disadvantaged communities and the population as a whole WNF	*102a	Achievement gap FSM KS2 Level 4+ (English and Maths)	Latest data Wigan 20%	18%	16%	14%	C3	Wigan Council * Wigan College LSC
		102b	Achievement gap FSM KS4 5+ A-C (including English and Maths) and equivalent	Latest data Wigan 26.1%	24%	22%	20%	C3	Wigan Council * Wigan College LSC

Appendix 2 – 29 May 2008

Priority ref	Priority	Indicator(s), including those from national indicator set (shown with a *)		Baseline	LAA Improvement Target, including those to be designated (shown with a *), and including education and early years targets			GONW Tracker Status	Partners who have signed-up to the target and any which are acting as lead partner/s (shown with a *)
					08/09	09/10	10/11		
22.	Reduce children and young people's involvement in anti-social behaviour and offending WNF	*111	The number of first time entrants to the Youth Justice System aged 10 – 17	Wigan - 12.9%				C4 Agreed indicator – no target to be set in first year	GMP GM Probation
23.	Improving the range of things to do and accessibility of positive activities for all WNF	*110	Number of young people's participating in positive activities	Wigan 13.8%				C4 Agreed indicator – no target to be set in first year	Wigan Council * WLCT
		Local	Access to positive activities for young people with LDD (as a percentage of the total of those participating in Youth Services Activities)	1.30%	2.50%	3.75%	5%		Wigan Council * WLCT

Appendix 2 – 29 May 2008

Priority ref	Priority	Indicator(s), including those from national indicator set (shown with a *)		Baseline	LAA Improvement Target, including those to be designated (shown with a *), and including education and early years targets			GONW Tracker Status	Partners who have signed-up to the target and any which are acting as lead partner/s (shown with a *)
					08/09	09/10	10/11		
24.	Improving participation and attainment in education, employment and training for 14-19 year olds WNF	*117	% 16 to 18 year olds who are not in education, training or employment (NEET)	2007/08 Wigan 8.16%	7.80%	7.50%	6.8%	C3	Wigan Council * LSC Colleges
25.	Reduce drug and alcohol related harm	*39	Alcohol-harm related hospital admission rates	GONW suggest 2054	GONW suggest 2495	GONW suggest 2712	GONW suggest 2921	C2 Agreed indicator – draft targets under discussion	Wigan Council * PCT Community safety partnership
26.	Reduce re-offending	*30	Re-offending rate of prolific / priority offenders					C1 Agreed indicator – no target proposed	Wigan Council * Community safety partnership
27.	Improve community confidence / perceptions in relation to crime, drugs and environmental issues	*21	Dealing with local concerns about anti-social behaviour and crime by local council and police					C4 – no target to be set in first year	Wigan Council * PCT Community safety partnership

Appendix 2 – 29 May 2008

Priority ref	Priority	Indicator(s), including those from national indicator set (shown with a *)		Baseline	LAA Improvement Target, including those to be designated (shown with a *), and including education and early years targets			GONW Tracker Status	Partners who have signed-up to the target and any which are acting as lead partner/s (shown with a *)
					08/09	09/10	10/11		
		Local 33	Arson incidents		To be determined	To be determined	To be determined		Council, Police and Fire service *
28.	Reduce local priority crime	*15	Number of most serious violent crimes per 1,000 population	2007/08 400	5% reduction on baseline = 380	7% reduction on baseline = 372	10% reduction on baseline = 360	C2 Agreed indicator – draft targets under discussion	Council * Community safety partnership
		*32	Reduction in repeat incidents of domestic violence to those victims who are being managed by a Multi-Agency Risk Assessment Conference system (MARAC)	2007/08 % of repeat MARAC cases = 23.23%	0% reduction i.e. maintain baseline			C4 Agreed indicator – no target to be set in first year	Council * Community safety partnership
29.	Mandatory education and early years indicators	*72	Achievement of at least 78 points across the Early Years Foundation Stage with at least 6 in each of the scales in Personal, Social and Emotional Development	Academic yr 2006-07 55.8% Wigan	57.80%	60%	N/A	M	Council *

Appendix 2 – 29 May 2008

Priority ref	Priority	Indicator(s), including those from national indicator set (shown with a *)		Baseline	LAA Improvement Target, including those to be designated (shown with a *), and including education and early years targets			GONW Tracker Status	Partners who have signed-up to the target and any which are acting as lead partner/s (shown with a *)
					08/09	09/10	10/11		
			and Communication, Language and Literacy						
		73	Proportion of pupils achieving level 4 or above in both in both English and Maths at Key Stage2	Academic yr 2006-07 73.5% Wigan	N/A	79%	N/A	M	Council
		*74	Proportion of pupils achieving level 5 or above in both English and Maths at Key Stage 3	Academic yr 2006-07 66.2% Wigan	N/A	74%	N/A	M	Council *
		75	Proportion of pupils achieving 5 or more A-C grades at GCSE or equivalent including English and in Maths	Academic yr 2006-07 44.7% Wigan, 46.7% National	49%	52%	N/A	M	Council*
		83	Achievement at level 5 or above in Science at Key	Academic yr 2006-07 72%	79%	79%	N/A	M	Council

Appendix 2 – 29 May 2008

Priority ref	Priority	Indicator(s), including those from national indicator set (shown with a *)		Baseline	LAA Improvement Target, including those to be designated (shown with a *), and including education and early years targets			GONW Tracker Status	Partners who have signed-up to the target and any which are acting as lead partner/s (shown with a *)
					08/09	09/10	10/11		
			Stage 3	Wigan, 73% National					
		*87	Secondary school persistent absence rate	Academic yr 2006-07 Wigan 6.8%, NW 7.3%, England 6.7%	N/A	5.80%	N/A	M	Council *
		*92	Narrowing the gap between the lowest achieving 20% in the Early Years Foundation Stage Profile and the rest	Academic yr 2006-07 34.8% Wigan	29.30%	28.70%	N/A	M	Council *
		93	Proportion of pupils progressing by 2 levels in English between Key Stage 1 and Key Stage 2	Academic yr 2006-07 85.6%	N/A	90%	N/A	M	Council
		94	Proportion of pupils	Academic yr 2006-	N/A	85%	N/A	M	Council

Appendix 2 – 29 May 2008

Priority ref	Priority	Indicator(s), including those from national indicator set (shown with a *)		Baseline	LAA Improvement Target, including those to be designated (shown with a *), and including education and early years targets			GONW Tracker Status	Partners who have signed-up to the target and any which are acting as lead partner/s (shown with a *)
					08/09	09/10	10/11		
			progressing by 2 levels in Maths between Key Stage 1 and Key Stage 2	07 78.9% Wigan					
		*95	Proportion of pupils progressing by 2 levels in English between Key Stage 2 and Key Stage 3	Academic yr 2006-07 23.3% Wigan	N/A	35%	N/A	M	Council *
		96	Proportion of pupils progressing by 2 levels in Maths between Key Stage 2 and Key Stage 3	Academic yr 2006-07 52.8% Wigan	N/A	63%	N/A	M	Council
		97	Proportion of pupils progressing by 2 levels in English between Key Stage 3 and Key Stage 4	Academic yr 2006-07 51.7% Wigan	N/A	59.30%	N/A	M	Council

Appendix 2 – 29 May 2008

Priority ref	Priority	Indicator(s), including those from national indicator set (shown with a *)		Baseline	LAA Improvement Target, including those to be designated (shown with a *), and including education and early years targets			GONW Tracker Status	Partners who have signed-up to the target and any which are acting as lead partner/s (shown with a *)
					08/09	09/10	10/11		
		98	Proportion of pupils progressing by 2 levels in Maths between Key Stage 3 and Key Stage 4	Academic yr 2006-07 27.1% Wigan	N/A	33%	N/A	M	Council
		99	Proportion of children in care (for at least one year) achieving level 4 in English at Key stage 2	2007 42.86%	55%	42.10%	N/A	M	Council
		100	Proportion of children in care reaching expected levels in Maths at Key Stage 2	2007 47.62%	50%	42.10%	N/A	M	Council

Appendix 2 – 29 May 2008

Priority ref	Priority	Indicator(s), including those from national indicator set (shown with a *)		Baseline	LAA Improvement Target, including those to be designated (shown with a *), and including education and early years targets			GONW Tracker Status	Partners who have signed-up to the target and any which are acting as lead partner/s (shown with a *)
					08/09	09/10	10/11		
		*101	Proportion of children in care (for at least one year) achieving 5 A*C GCSEs (or equivalent) at Key stage 4 (including English and maths)	Academic yr 2006-07 0% Wigan	N/A	27.30%	N/A	M	Council*

Key: Government Officer Trader Status:

C1	=	Indicator agreed with GONW no target proposed.
C2	=	Indicator agreed with GONW, target under discussion / negotiation.
C3	=	Indicator and targets agreed with GONW.
C4	=	Indicator agreed with GONW, but not possible to set target yet.