

**Report to:** Community Protection Panel

**Date:** 23rd July 2007

**Subject:** Housing Partnership - Recent Progress

**Report of:** Director of Environmental Services

**Contact officer:** Peter Layland Ext. 4135

---

**Purpose/summary:** To report the latest developments within the Housing Partnership.

**Alternative options considered and reason for selecting the one recommended:** This is an information item.

**Recommendation/decision:** That this information report on the Housing Partnership be accepted.

**Key Decision:** This report does not involve a key decision.

**Risks / Implications:**

Financial:	No
Staffing:	No
Policy:	Housing Strategy
Equal Opportunities - Has a Diversity Impact Assessment been conducted?	A Diversity Impact Assessment has been completed for the Housing Strategy
Wards affected:	All
Special Interest Members – Which have been consulted	None

---

Has the Director of Legal and Property Services confirmed that the recommendations within this report are lawful and comply with the Council's Constitution? **N/A**

Has the Director of Finance and IT confirmed that any expenditure referred to within this report is consistent with the Council's budget? **N/A**

Are any of the recommendations within this report contrary to the Policy Framework of the Council? **No**

\* delete which applicable

**For Cabinet reports only :**

Categorisation of the report:	<b>x</b>		<b>x</b>
Discussion leading to a decision		Discussion	
Monitoring		Decision	
Sharing for corporate understanding		Information	

---

**Tracking/Process:**

	Consultation	Ward Members	Partners
			Housing Partnership 6/7/07
Panel	Overview & Scrutiny	Cabinet	Council
CPP - 23.7.07			

There are no Background Papers to this Report within the meaning of Section 100D of the Local Government Act 1972.

Proper Officer M. Kimber

Date 9th July 2007

## **1. Background:**

- 1.1 The Housing Partnership has been operating for over five years and is jointly responsible with the Community Safety Partnership for achieving Goal 6 within the Community Plan, namely "Provide access to decent homes in clean safe neighbourhoods". It seeks to achieve this through implementing the Housing Strategy and its various sub strategies such as those relating to homelessness and older people. The Partnership has an open membership and has currently nearly a hundred contact names drawn from resident groups, the voluntary sector, different statutory agencies and the private sector. Examples of work involving inter-agency voluntary and community organisations include work on homelessness and on older people. It also has an information role and regular newsletters are produced.

## **2. Current Position of the Housing Partnership:**

- 2.1 The Partnership reviewed itself last year to try to ensure it maintained momentum and be best placed to undertake the major task of updating the Housing Strategy during the current year. These reviews have resulted in:-
- Retaining the two Housing Partnership Events per year.
  - The continuation of the four specific Task Groups that deliver larger pieces of work on behalf of the Partnership. These are the Homelessness Forum, Refugee and Migrants Forum, Affordable Housing Forum and the Older Persons Forum. All these meet at least quarterly although most of them also have an extensive range of associated working groups.
  - The establishment of Housing Partnership Core Strategy Group which consists of a sample of active membership who make decisions on behalf of the Partnership, oversee the work of the sub groups, help create the Housing Strategy and look to strengthen links with the other thematic partnerships. This group is now established and has now met twice.
  - Formalisation of the role of the Chair of the Partnership.
  - Efforts are also being made to try to widen the range of the membership and also to heighten awareness of the Partnership. The major task in the coming months are the review of both the Housing Strategy and the Homeless Strategy.
- 2.2 Given this development of the Partnership there is now a considerable amount of activity ranging from the regular meetings of the Forums to the various consultative events. As an illustration over the last few weeks there has been a Private Landlords Forum attended by over 50 landlords, a Special review conference aimed at reviewing the Homelessness Strategy (attended by nearly 40 delegates) and a meeting of the overall Partnership.

### **3. Housing Partnership Meeting - 6th July 2007**

- 3.1 The latest meeting of the overall Partnership occurred in Leigh on 6th July 2007. It was aimed at reporting progress over the last 12 months, electing a new Chair of the Partnership, and to look to undertake work identifying the future direction of the revised Housing Strategy. It took the form of a series of presentations and workshops. The minutes of the meeting are enclosed as Appendix 1.
- 3.2 Key elements of the day included the presentation of the Housing Partnership Framework document (Appendix 2) which set out the overall Housing Partnership Structure. This includes the links to the Community Plan, the various elements of the Housing Partnership and associated groups. It illustrates the broad range of consultative and developmental activity currently being undertaken. When combined with the work undertaken by Wigan and Leigh Housing with their tenants which is also fed into these processes the range of contact with residents, voluntary groups and other agencies can be appreciated.
- 3.3 The meeting also elected a new Chair of the Partnership. The former Chair had been Paul Lees, the Chief Executive of Adactus HA (County Palatine) who had undertaken this role for a number of years and felt that he could no longer devote sufficient time to the role. The new Chair is Chris Harris who is the Manager of the Wigan and Leigh Citizens' Advice Bureau.
- 3.4 However the majority of the meeting was aimed at looking to identify the successes of the current Housing Strategy, to assess where gaps in services still occur and to look to identify future priorities. The results are shown in Appendix 1 with a clear consensus around the successes of the current strategy being the dramatic improvements in the condition of housing, the improved energy efficiency, better tenant participation and the better quality of services. Better improvements in partnership working was also mentioned especially within homelessness. Gaps were found in the inadequate supply of affordable housing, the inadequate housing and support services to vulnerable groups and in the limited progress in reducing neighbourhood deprivation. In terms of developing priorities for the future, the following clear themes were emphasised by all three of the workshop discussions:-
- Meeting the needs of the most vulnerable (including older people).
  - Affordable Housing
  - Regeneration of neighbourhoods and the need for ever more cross agency and cross partnership working in this area.

### **4. Conclusions:**

- 4.1 The Housing Partnership is continuing to work hard to help develop responses to the latest housing needs. The results of this meeting will be fed to all the different working groups and the Core Strategy Group, with the intention of developing outline policy responses in time for the next Partnership Event in November.

## Appendix 1:- Wigan Borough Housing Partnership Minutes

Friday 6<sup>th</sup> July 2007 - 9.30am – 12.30pm

Leigh Miners Welfare Institute, Leigh

<u>No.</u>		<u>Action</u>
1.	<p><b><u>Present:</u></b></p> <p>Donna Barrow Jones – Housing Benefits Wigan Council Suzanne Bullock – Adactus Housing Association Ashley Crumbley – Wigan &amp; Leigh Housing Councillor Keith Cunliffe – Wigan Council Jeanette Donnelly – New Progress Housing Association Angela Durkin – Housing Strategy Wigan Council Sarah Fontana – Private Sector Housing Wigan Council Reverend Tim Hall – Queens Hall Help Committee Chris Harris – Leigh CAB Janice Hogg – Ashton, Leigh, Wigan Primary Care Trust Lynn Kay – Community Engagement Wigan Council Peter Layland – Housing Strategy Wigan Council Cath McAndry – English Churches Housing Group Anees Mank – Private Sector Housing Wigan Council Steve Martlew – Housing Strategy Wigan Council Geoff Roberts – Wigan &amp; Leigh Housing Steve Sargent – Housing Strategy Wigan Council Pat Shacklock – Community Safety Wigan Council Karen Spencer – Arena Care &amp; Repair Martin Stuart – Planning Policy Wigan Council Kath Withington – Anchor Housing</p>	
2.	<p><b><u>Apologies:</u></b></p> <p>Linda Adhana – Ashton, Leigh &amp; Wigan Primary Care Trust Val Blackburn – Adult Services Wigan Council Paul Cartwright – Victim Support Rona Cruikshank - Ashton, Leigh &amp; Wigan Primary Care Trust Debbie Emmitt – Wigan &amp; Leigh Housing John Fairclough – Community Safety Wigan Council Bernard Fitzsimmons – Adult Services Wigan Council Sally Forshaw - Ashton, Leigh &amp; Wigan Primary Care Trust Richard Foster – Children and Young Peoples Services John Hutchison – Community Safety Wigan Council Lynda Ingham – Arena Housing Ann King – Older Peoples Forum Karen Laithwaite – English Churches Housing Group Michael Le Breton – Happy Homes Sarah McCarthy – Supporting People Wigan Council Marjorie Marsden – Community Network Ann Reid - Ashton, Leigh &amp; Wigan Primary Care Trust Annabelle Robinson – Adactus Housing Association Ken Wardale – Environmental Services Wigan Council</p>	

3.	<p><b><u>Welcome</u></b></p> <p>Peter Layland welcomed everyone to the meeting and outlined the format of the morning.</p>	
4.	<p><b><u>Election of New Chair</u></b></p> <p>Peter Layland outlined the process that had taken place with regard to electing a new chair. A description of the role of Chair of the Housing partnership had been circulated, nominations had been requested and one had been received. The new chairperson of the Housing Partnership would be Chris Harris from CAB. Chris introduced himself.</p> <p>Thanks was given to Paul Lees who had been the chair of the partnership over the last 5 years.</p>	
5.	<p><b><u>Presentation: The Housing Partnership Core Strategy Group and the Housing Partnership Framework.</u></b></p> <p>Steve Martlew delivered a presentation on the work of the Housing Partnership Core Strategy Group and the framework in which the Housing partnership operates. Steve circulated a document that complimented his presentation.</p> <p>Q1. Lynn Kay asked what information/evidence was there that the Community Safety partnership worked closely with the Housing Partnership in attempting to deliver goal 6?</p> <p>Peter Layland replied that whilst there was a recognition of the need to strengthen links between the other thematic partnerships, and that this was part of role of Core Strategy Group – there was evidence of good collaborative work in projects such as alleygating</p> <p>Q2. Tim Hall asked that that the document be amended to demonstrate a clearer link between the Housing Partnership and the Supporting People Commissioning Body.</p> <p>Peter Layland replied that the links are there as he sits on the Commissioning board and attends the Housing Partnership. The document would be amended to reflect this.</p>	
6.	<p><b><u>Presentation: Performance for 2006/07 including the need to review the Housing Strategy</u></b></p> <p>Steve Sargent delivered a presentation on the performance of the current Housing Strategy throughout its lifetime and the timetable for the writing of the new strategy. The presentation ended by asking 2 questions:</p> <ol style="list-style-type: none"> <li>1. Which housing priorities have we made good progress on?</li> <li>2. Which housing priorities remain key problems?</li> </ol>	

	<p>The first workshop got underway and each group was tasked with answering the 2 questions above.</p>	
7.	<p><b><u>Presentation: Housing Market Trends / Sub-Regional Working</u></b></p> <p>Peter Layland delivered a presentation on the current trends and issues in housing within Wigan and the sub-region. The presentation also highlighted what the future trends and issues were likely to be. Much of the data within the presentation came from the sub-regional piece of research called “Making Housing Count”</p> <p>The presentation ended with 2 issues for groups to look at in workshop 2.</p> <ol style="list-style-type: none"> <li>1. Identify future needs/gaps</li> <li>2. What are your top 3 priorities to achieve the aim of “An affordable, decent home in a clean, safe neighbourhood”</li> </ol>	
8.	<p><b><u>Feedback results:</u></b></p> <p>Each group fed back their discussions from both workshop 1 and workshop 2.</p> <p>The feedback can be grouped into the following themes:</p> <ol style="list-style-type: none"> <li>1. Which housing priorities have we made good progress on? <ul style="list-style-type: none"> <li>Decent Homes &amp; Energy Efficiency</li> <li>Delivering Good quality Public Services</li> <li>Partnership Working</li> <li>Customer Choice</li> <li>Better Homeless Prevention and Support Services</li> <li>Increased tenant participation</li> </ul> </li> <li>2. What Housing priorities remain key problems? <ul style="list-style-type: none"> <li>Affordable Housing</li> <li>Homelessness numbers and people with significant complex needs</li> <li>Funding for supported housing schemes for helping people with complex needs</li> <li>Neighbourhood Deprivation</li> <li>Housing issues for minority, vulnerable groups</li> </ul> </li> <li>3. Identify Future Needs/Gaps and top 3 Priorities</li> </ol> <p>All the issues/gaps that each member wrote have been recorded but are too lengthy to list here. There was a consensus amongst all groups that the top 3 priorities are (again these are themed):</p> <ol style="list-style-type: none"> <li>1. Housing for Vulnerable Groups</li> </ol>	

	2. Affordable Housing 3. Neighbourhood / Environment Issues	
9.	<b><u>Date &amp; time of Next Meeting</u></b>  The next full Housing Partnership meeting will be held in November 2007. A firm date and venue will be circulated nearer to the time.	



# HOUSING

# PARTNERSHIP

# FRAMEWORK

Housing Strategy Section  
Environmental Services  
Unity House  
Westwood Park Drive  
Wigan  
WN3 4HE

Tel: 01942 486788  
Fax: 01942 486639

July 2007

## Introduction

The Local Strategic Partnership, the Housing Partnership, strategic groups, task groups and sub-groups can be a very confusing subject .

This document is designed to describe the framework in which the Housing Partnership operates, how it influences the Local Strategic Partnership and how various sub-groups influence it.

Information is given about each individual group and where possible chair and contact details. Should you have any questions about the various groups you can contact the chair or named contact directly, alternatively you are most welcome to contact the Housing Strategy Team 01942 486788 email [S.Martlew@wigan.gov.uk](mailto:S.Martlew@wigan.gov.uk).

I hope you find the document useful

A handwritten signature in black ink, appearing to read 'Peter Layland'. The signature is written in a cursive style with a prominent horizontal stroke at the end.

Peter Layland  
Assistant Director (Housing Regeneration)

# Housing Partnership Structure

## Community Plan

In this day and age, no one person or organisation can solve all our problems or achieve all our aspirations. But if we all work to the same plan in partnership — individuals, groups, council, public and private sector — then everything becomes possible.

The Community Plan offers a single working document — a 'blueprint' or 'roadmap' — which consolidates all the issues and allows us to work to a coherent strategy. Wigan Borough Partnership is a strategic partnership central to the success of the Community Plan. The Partnership comprises The Board, the 7 thematic Partnerships, the Township Forums and Encompass - the Community Network.

The Community Plan is concerned with both long term and short term issues. The Community Plan is based on a long term vision. It sets out a vision for the kind of Borough that we all want to develop over the next 10-15 years. It describes the ways in which this vision has been developed:

- How people have contributed
- What are the key issues facing the people of the Borough
- The kinds of opportunities for the area that might develop - especially linking to other parts of the region

It is also about getting local people to work together on short term action that can make a real difference in their own communities.

To achieve this, the plan has **8 main goals**. These are the main areas for action. They include the key issues which people say concern them, as well as issues which are sometimes hidden, such as low wages. They also include issues which can be difficult to deal with such as improving local transport.

Perhaps most important of all, the Plan has **5 principles**. These are based on the values that have been agreed to be most important over the past few years of work:

The plan needs the goals and the principles to work together if they are going to make a real difference. It's no good having economic growth if we cannot get jobs with good wages for local people. It's no good having top class health services if we cannot improve the health and lifestyle of local people.

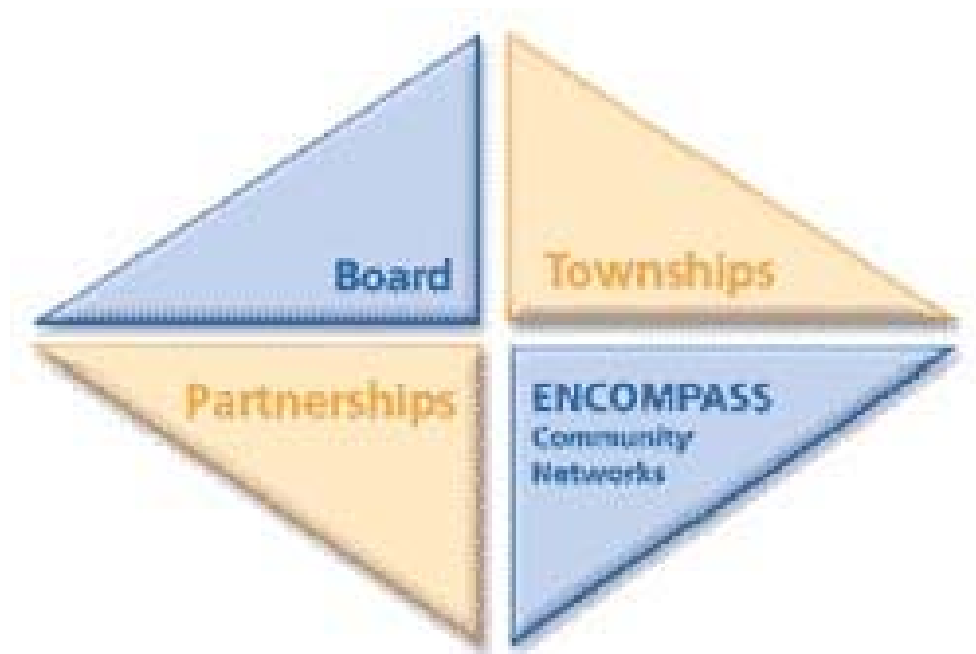
## 5 Principles

1. Social Inclusion
2. Strong Communities
3. Partnership Working
4. Sustainable Development
5. Learning from Experience

## 8 Goals

1. Achieve a good standard of living and reduce poverty

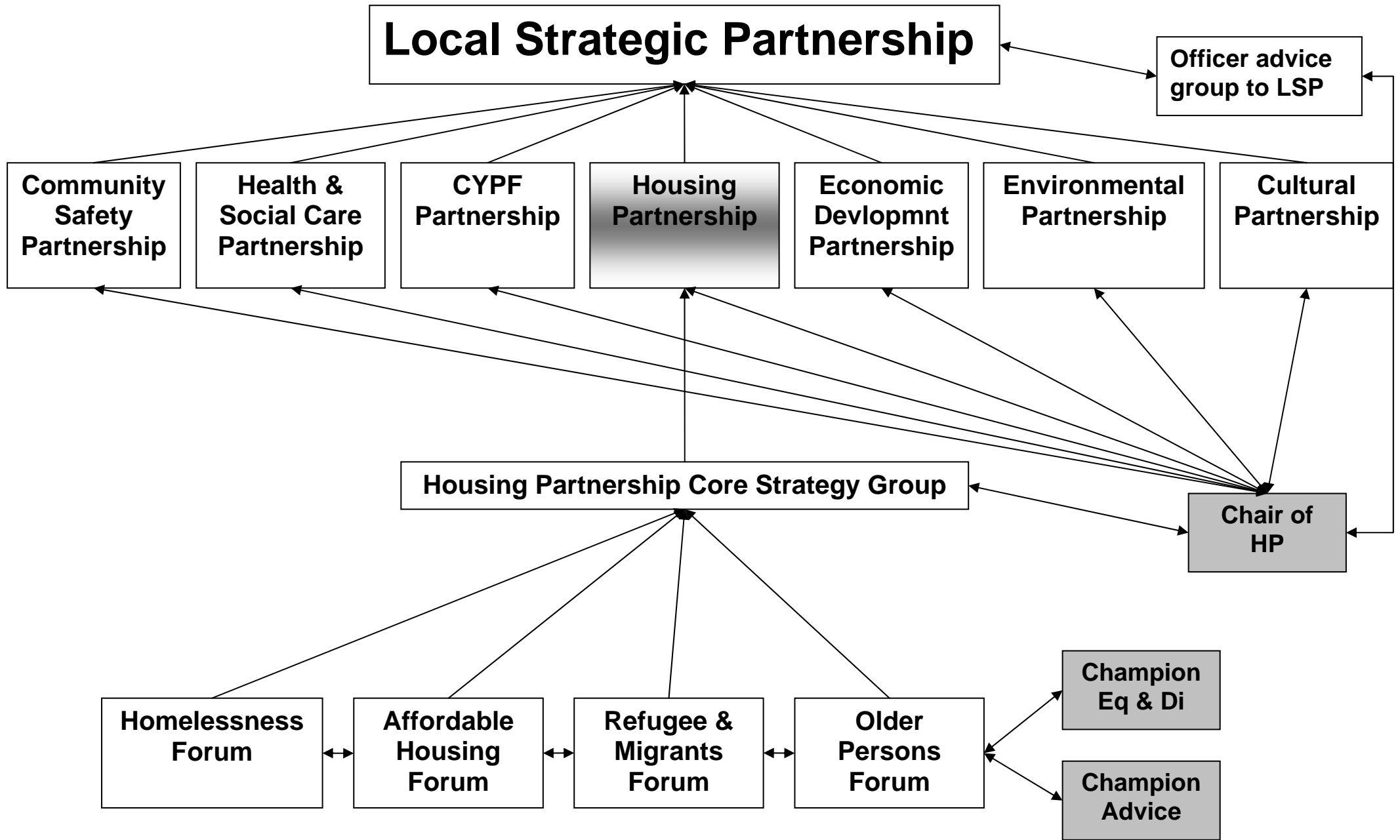
2. Ensure similar chances of staying healthy
3. High aspirations, education and skills
4. A strong, modern local economy
5. Easy travel without having to use a car
6. Provide access to decent homes in clean, safe neighbourhoods
7. Make the Borough one of the most environmentally friendly in the region
8. Increase participation in community and cultural activities



### The Board

The Local Strategic Partnership is known as the Wigan Borough Partnership. The Board is made up of leaders from the Council, various agencies and communities. The Board builds links across the Borough, encouraging major new projects and initiatives and helping to set priorities.

**Contact:** Lynn Kay - Partnership Support Officer 01942 776156  
[lynn.kay@wigan.gov.uk](mailto:lynn.kay@wigan.gov.uk)



## The Township Forums

Each of the Borough's 10 Township areas has a **Township Forum** that works to develop local partnerships, making services more effective by getting local people involved in their own communities and working on local issues.

The Forum is made up of a number of agencies, organisations, local Councillors and local groups. Township Forums are responsible for producing local action plans that reflect the long-term vision for the future of the Township area.

The action plans are based around eight themes; community safety, economy, education, environment, health, leisure and recreation, neighbourhood development and traffic and transport.

These plans detail what the Forum feels are important issues for the Township. Township Staff work closely with the Forums in a supporting and advising role and to encourage improvements in services where needed.

**Contact:** Sian Jay - Township Programme Manager  
01942 776151 [S.Jay@wigan.gov.uk](mailto:S.Jay@wigan.gov.uk)

## The Community Empowerment Forum

The Community Empowerment Programme draws the various communities of the Borough together to ensure they have a strong voice in shaping the future. The Community Empowerment Programme represents the interests of:

- Voluntary organisations
- Faith
- BME (Black and minority Ethnic) communities
- Disability
- Over 50s
- Young People
- Local communities

We recognise there are other parts of local communities and we are working to include these too.

**Contact:** Emma Scott - Community Empowerment Programme  
Co-Ordinator 01942 686234 [escott@wiganvoices.com](mailto:escott@wiganvoices.com)

## **The Housing Partnership**

The Housing Partnership meets twice a year. It is jointly responsible with the Community Safety Partnership for achieving Goal 6 “*Provide access to decent homes in clean, safe neighbourhoods*”. There is an open door policy with regard to membership and anyone who is interested in housing in the Wigan Borough is welcomed. The partnership identifies housing issues in the Borough and then suggests solutions for such issues. They are instrumental in creating and monitoring the Wigan Borough Housing Strategy.

**Chair:**

**Contact:** Steve Martlew - Housing Policy Officer 01942 486788  
[S.Martlew@wigan.gov.uk](mailto:S.Martlew@wigan.gov.uk)

## **Housing Partnership Core Strategy Group**

The Core Strategy Group consists of a representative sample of membership from the wider Housing Partnership. Its remit is to make decisions on behalf of the Partnership, oversee the work of the specific task groups, create and deliver the Housing Strategy on behalf of the Housing Partnership as well as strengthen the links between the other 6 thematic partnerships, the LSP, the Township Forums and community groups.

**Chair:**

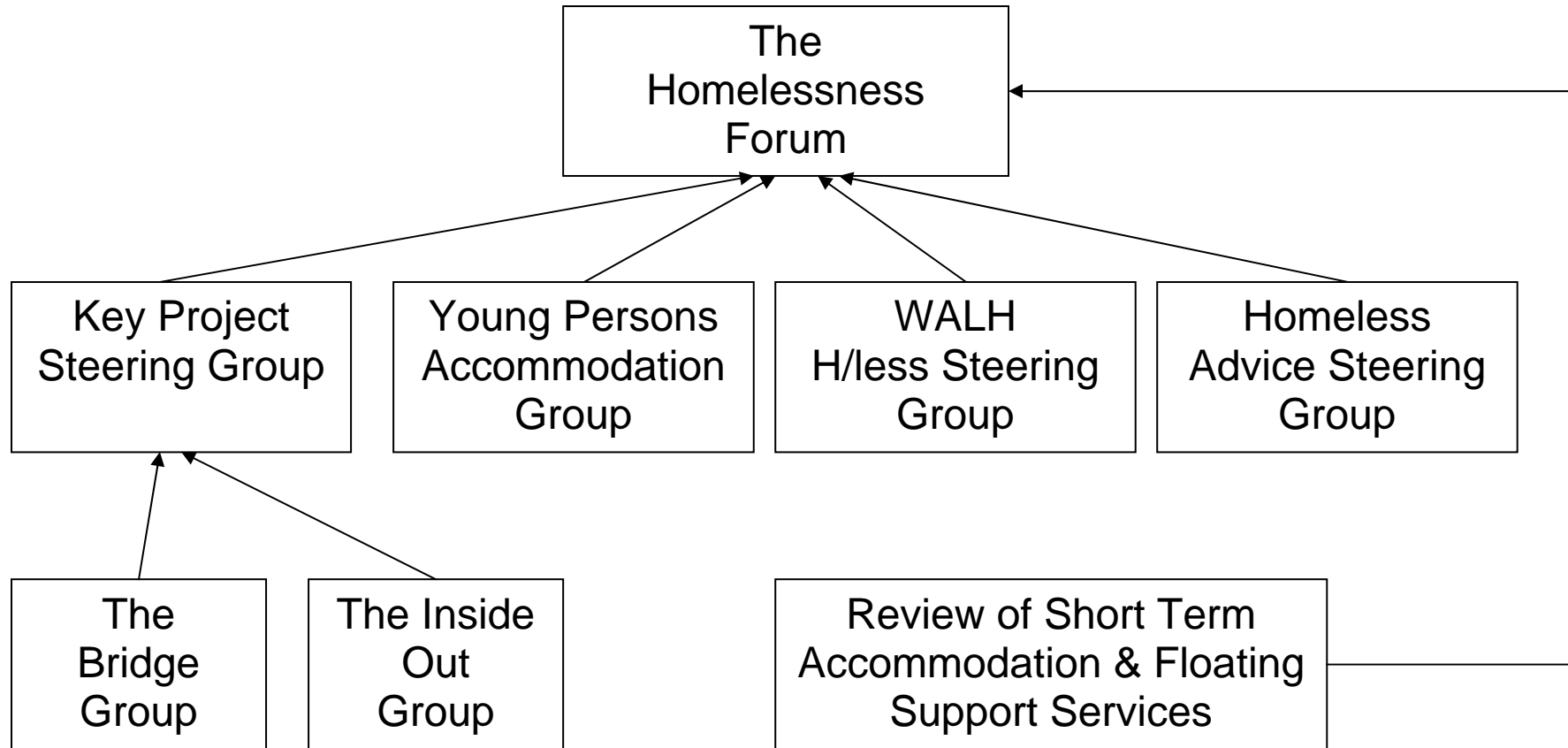
**Contact:** Steve Martlew - Housing Policy Officer 01942 486788  
[S.Martlew@wigan.gov.uk](mailto:S.Martlew@wigan.gov.uk)

## **Specific Task Groups**

The Housing Partnership has 4 specific task groups that deliver larger pieces of work on behalf of the Housing Partnership. Each of the task groups is known as a forum and very often has several sub-groups beneath it. Each Forum has its own terms of reference and will report upon its performance to the Core Strategy Group.

The following sections each have a diagram that demonstrates how each Forum is set up and the sub-groups that operate below it.

The Homelessness Forum



## **Homelessness Forum (Specific Task Group 1)**

The forum is chaired by Reverend Tim Hall and looks at all homelessness issues within the Borough. Membership is made up of agencies (both voluntary and statutory) who work with homeless people in the Wigan Borough. The Forum is responsible for the writing and delivery of the Homelessness Strategy (to be reviewed and rewritten in 2007). Within the Forum are several specific project groups:

**Chair & Contact:** Reverend Tim Hall [timhall@wiganmethodists.org.uk](mailto:timhall@wiganmethodists.org.uk)

### **The Key Project Steering Group**

This group focuses on the Key Project which aims to act as an information, support and mediation service for rough sleepers in the Borough. This can be signposting advice to homeless services but can also be signposting advice to drug and alcohol treatment services as well as addressing offending behaviour.

**Chair & Contact:** Reverend Tim Hall [timhall@wiganmethodists.org.uk](mailto:timhall@wiganmethodists.org.uk)  
Steve Sargent – Service Manager Housing Strategy Team  
01942 827702 [S.Sargent@wigan.gov.uk](mailto:S.Sargent@wigan.gov.uk)

### **The Bridge Group**

Is a group of former rough sleepers whose aim is to help current rough sleepers or those at risk of becoming rough sleepers address substance misuse issues.

**Contact:**

### **The Inside Out Group**

Current and former rough sleepers who engage, befriend and support other rough sleepers. The focus of their work is through diversionary activities.

**Contact:**

### **Young Persons Accommodation Group**

This group looks specifically at the needs, associated problems of being homeless at a young age. The group look at causes and attempt to put preventative solutions in place.

**Chair & Contact:** Matthew Jones – Housing Aid Officer 01942 767391  
[M.Jones5@walh.co.uk](mailto:M.Jones5@walh.co.uk)

### **Wigan & Leigh Homeless Steering Group**

A steering group set up within Wigan & Leigh Housing that looks specifically at performance and issues directly in connection with the work they provide.

**Chair & Contact:** Debbie Emmitt – Group Manager Housing Options  
01942 767341 [D.Emmitt@walh.co.uk](mailto:D.Emmitt@walh.co.uk)

### Homeless Advice Steering Group

A group that looks specifically and advice given to people who are threatened with or who are homeless.

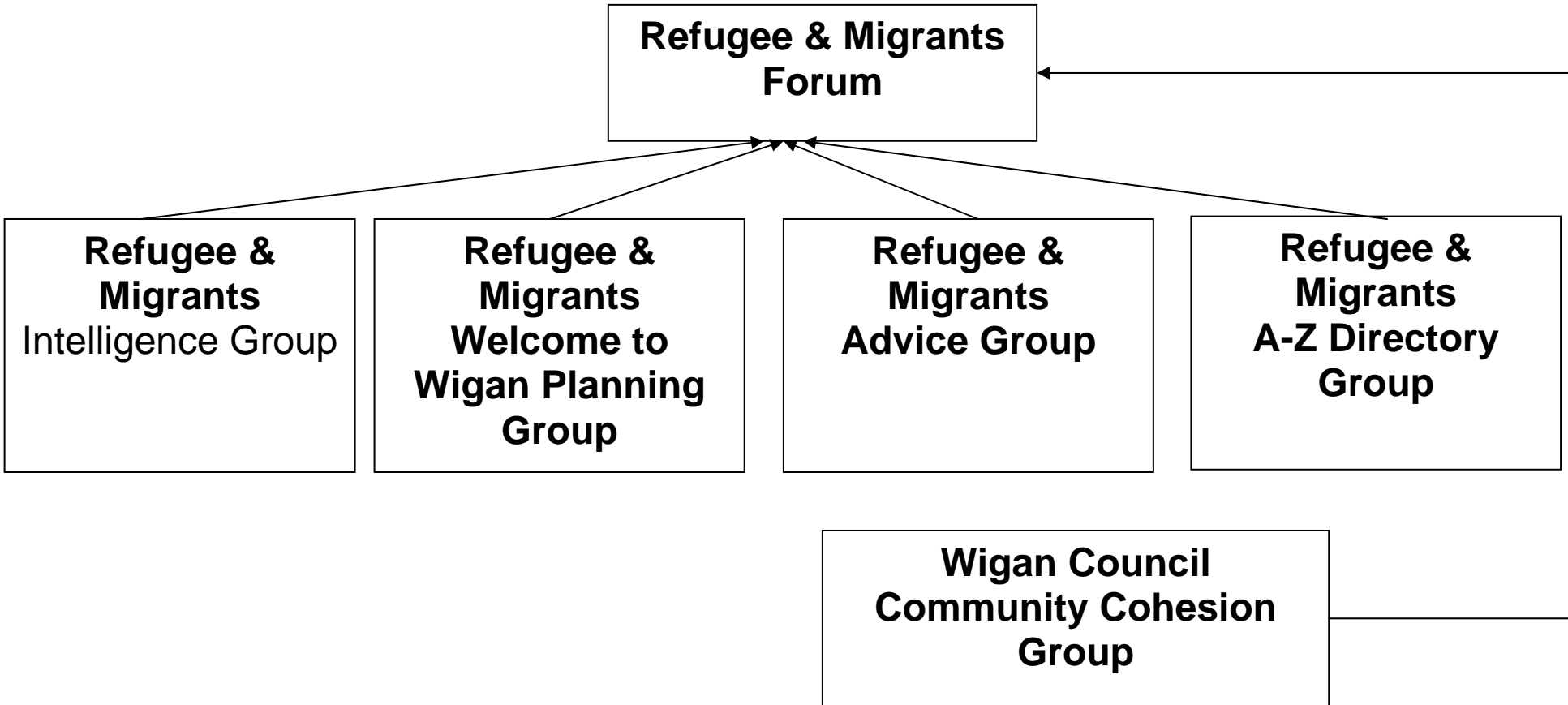
**Chair & Contact:** Chris Harris – Leigh CAB 01942 709709  
[C.Harris@wigancab.org](mailto:C.Harris@wigancab.org)

### Review of Short-term Accommodation & Floating Support Services

The task of this group is to carry out a strategic review of services and increase the capacity.

**Chair & Contact:** Steve Sargent – Service Manager Housing Strategy Team  
01942 827702 [S.Sargent@wigan.gov.uk](mailto:S.Sargent@wigan.gov.uk)

Refugee & Migrants Forum



## **Refugee & Migrants Forum (Specific Task Group 2)**

The Forum is chaired by Steve Sargent but is a group made up of agencies (both voluntary and statutory) people who work with Asylum Seekers, Refugees and Economic Migrants in the Wigan Borough. Within the Forum are several specific project groups.

**Chair & Contact:** Steve Sargent – Service Manager Housing Strategy Team  
01942 827702 [S.Sargent@wigan.gov.uk](mailto:S.Sargent@wigan.gov.uk)

## **The Refugee & Migrants Intelligence Group**

This group looks at Intelligence issues such as race/hate crime, pressure on public services and other intelligence related issues with regard to migration to the Wigan Borough.

**Chair & Contact:** Steve Sargent – Service Manager Housing Strategy Team  
01942 827702 [S.Sargent@wigan.gov.uk](mailto:S.Sargent@wigan.gov.uk)

## **The Refugee & Migrants Welcome to Wigan Planning Group**

This group is tasked with developing Wigan's approach to welcoming new arrivals claiming asylum, ensuring that there is a consistent approach across all providers as well as up to date and accurate advice and information.

**Chair & Contact:** Linda Adhana – Public Health Ashton, Leigh, Wigan PCT  
01942 481715 [Linda.Adhana@alwpct.nhs.uk](mailto:Linda.Adhana@alwpct.nhs.uk)

## **The Refugee & Migrants Advice Group**

This group looks at ensuring advice services (both statutory and voluntary) provide consistent, relevant and accessible advice to people who live in the Borough that have claimed asylum.

**Chair & Contact:** Chris Harris – Leigh CAB 01942 709709  
[C.Harris@wigancab.org](mailto:C.Harris@wigancab.org)

## **The Refugee & Migrants A-Z Directory Group**

This group aims to produce and keep updated an A-Z Directory for all agencies. The Directory lists all services that are involved in working with Refugee and Migrants in the Borough. The Directory is split into different services, themes and gives contact details and a brief description of what each agency does.

**Chair & Contact:** Steve Martlew - Housing Policy Officer 01942 486788  
[S.Martlew@wigan.gov.uk](mailto:S.Martlew@wigan.gov.uk)  
Sadia Nawaz – BME Worker Ashton Leigh & Wigan PCT  
[S.Nawaz@alwpct.nhs.uk](mailto:S.Nawaz@alwpct.nhs.uk)

## The Community Cohesion Group

This group is slightly different to the other groups as it was set up by the Wigan Borough partnership (LSP) rather than the Forum. It is chaired by Sian Jay from the Community engagement Team. Its purpose is to co-ordinate cohesion work across the Borough which, whilst relevant to BME communities, is also relevant to many more hard-to-reach groups that fall outside the remit of the Refugee and Migrant Forum work.

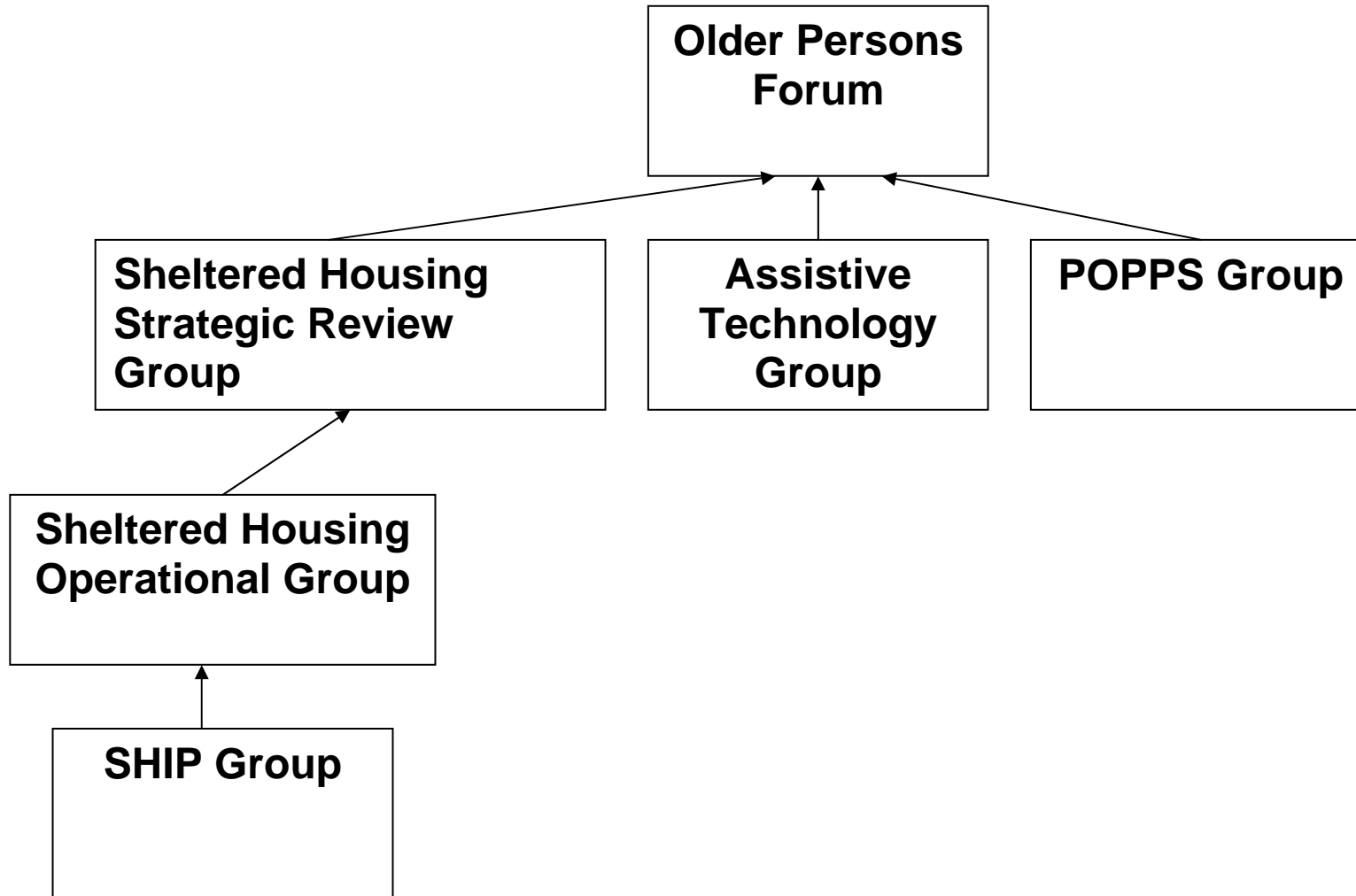
**Chair & Contact:** Sian Jay – Township Programme Manager 01942 776151  
[S.Jay@wigan.gov.uk](mailto:S.Jay@wigan.gov.uk)

### **Affordable Housing Group (Specific Task Group 3)**

This is a new group. Members are likely to include all agencies/partners concerned with delivering affordable housing, both on-site and off-site. Their remit will be to deliver the affordable housing strategy. There is likely to be sub-groups formed to deal with specific issues such as off site regeneration, on-site provision, affordable housing register etc..

**Chair & Contact:** Peter Layland Assistant Director (Housing Regeneration)  
01942 404135 [P.Layland@wigan.gov.uk](mailto:P.Layland@wigan.gov.uk)

Older Persons Forum



### **Older Persons Forum (Specific Task Group 4)**

This task group looks at Housing Provision in the Borough for Older People. The group is attended by both statutory and voluntary agencies that deliver services to Older People. There are several sub-groups

**Chair & Contact:** Peter Layland Assistant Director (Housing Regeneration)  
01942 404135 [P.Layland@wigan.gov.uk](mailto:P.Layland@wigan.gov.uk)

### **The Sheltered Housing Strategic Review Group**

This group is reviewing Sheltered Housing within the Wigan Borough and looking at what direction is needed to meet the changing demands of the older population both now and in the future. The review is looking at innovative new ways to provide different levels of housing related support and strengthening partnerships with agencies, such as health and social care, that deliver a range of services to older people in our community, in order to promote independence and choice.

**Chair & Contact:** Sarah McCarthy – Supporting People Manager  
01942 777063 [Sarah.McCarthy@wigan.gov.uk](mailto:Sarah.McCarthy@wigan.gov.uk)

### **The Sheltered Housing Operational Group**

This group looks to co-ordinate and join up Sheltered Housing Services in the Borough. They also deliver the SHIP day (Sheltered Housing & Information Partnership). The group is made up of various Sheltered Housing Providers as well as other agencies delivering services to residents of sheltered housing schemes.

**Joint Chair & Contacts:** Eva Holt – Adactus Housing Association 01942 608715  
[eva.holt@adactushousing.co.uk](mailto:eva.holt@adactushousing.co.uk)  
Karen McHugh – Group Manager Supported Housing  
Services 01942 486544 [K.McHugh@walh.co.uk](mailto:K.McHugh@walh.co.uk)

### **Assistive Technology Group**

This group looks at new technology that will help older people remain independent for longer. This subsequently enables them to remain in their own homes for longer and out of the residential care home and hospital system.

**Chair:** Liv Birchall – Strategic Manager Older People  
01942 244991 (ext 7023) [L.Birchall@wigan.gov.uk](mailto:L.Birchall@wigan.gov.uk)

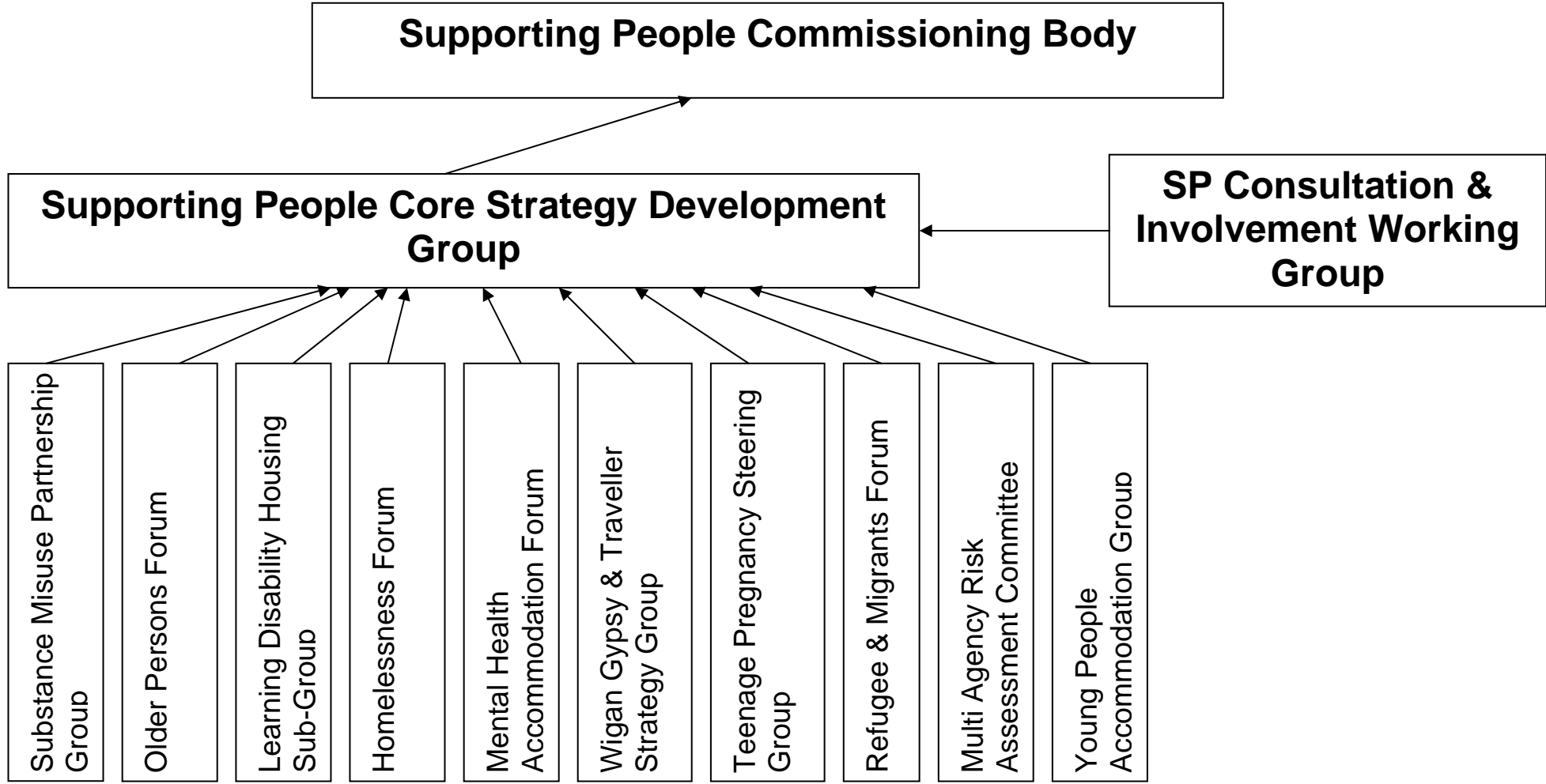
**Contact:** Jane Stevens – Project Manager 01942 827816  
[J.Stevens@wigan.gov.uk](mailto:J.Stevens@wigan.gov.uk)

## The POPPS Group

POPPS (Partnership for Older People Projects) was a bid submitted by the Council for funding of special one off projects aimed at keeping Older People in their own homes and out of residential care and hospital. The group was formed by the Council to deliver POPPS and whilst was not set up by the Older Persons Group as part of the Housing Partnership, its work clearly fits under this group.

**Contact:** Deborah Gent – POPPS Project Manager 01942 404439  
[D.Gent@wigan.gov.uk](mailto:D.Gent@wigan.gov.uk)

**Supporting People Structure**



## **Supporting People**

The Supporting People programme offers vulnerable people the opportunity to improve their quality of life by providing a stable environment which enables greater independence. The aim of the programme is to deliver high quality and strategically planned housing-related services. The services should be cost effective and reliable, and complement existing care services with the planning and development of new services being needs led.

### **Supporting People Commissioning Body**

The Commissioning body is responsible for the 7.6m budget and makes the final decisions as to the commissioning of supporting people services.

**Chair:** Bernard Walker Director of Adult Services Department  
**Contact:** Sarah McCarthy – Supporting People Manager  
01942 777063 [Sarah.McCarthy@wigan.gov.uk](mailto:Sarah.McCarthy@wigan.gov.uk)

### **Supporting People Core Strategy Development Group**

The CSDG is responsible for overseeing the development and implementation of the Supporting People programme in Wigan, in response to direction from the government and the Commissioning body.

**Chair & Contact:** Sarah McCarthy – Supporting People Manager  
01942 777063 [Sarah.McCarthy@wigan.gov.uk](mailto:Sarah.McCarthy@wigan.gov.uk)

### **Supporting People Consultation & Involvement Working Group**

This group co-ordinates all pieces of consultation with current and prospective users of Supporting People Services. Their views help inform and shape services.

**Chair & Contact:** Sarah McCarthy – Supporting People Manager  
01942 777063 [Sarah.McCarthy@wigan.gov.uk](mailto:Sarah.McCarthy@wigan.gov.uk)

There are 15 groups in the supporting people programme, some of which are covered by task group work. Where a specific housing sub-group doesn't exist we take an active role in appropriate related forums.

- **People with Drug problems** - (Substance Misuse Partnership Group)
- **People with Alcohol problems** – (Substance Misuse Partnership Group)
- **Older People** – (Housing Sub Group)
- **People with Physical Disabilities** – (Group planned for March 2008)
- **People with Learning Disabilities** – (Housing Sub Group)
- **Homeless Families** – (Housing Sub Group)
- **Rough Sleepers and Single Homeless** – (Housing Sub Group)
- **People with Mental Health problems** – (Mental Health Accommodation Forum)
- **People with HIV / AIDS** - (No group)
- **Gypsy's & Travellers** – (Wigan Strategy Group)
- **Offenders** - (Covered by Homelessness Forum)
- **Refugees** – (Housing Sub Group)
- **Teenage Parents** – (Teenage Parent Group)
- **People suffering Domestic Violence** - (Multi Agency Risk Assessment Committee)

- **Young People leaving care at risk** – (Young People's Accommodation Group)

Supporting People report to the Housing Partnership by taking performance reports to the Housing Partnership Core Strategy Group.

### **Stand Alone Groups**

Below are some of the groups that don't fit into any of the structures above but still influence the Housing Partnership.

### Learning Disabilities Housing Sub-Group

This sub-group of the Learning Disabilities Partnership Board, is tasked with increasing the range of housing options available to people with learning disabilities and producing a range of information for people with learning disabilities and their families about these options.

**Chair:** Sarah McCarthy – Supporting People Manager  
01942 777063 [Sarah.McCarthy@wigan.gov.uk](mailto:Sarah.McCarthy@wigan.gov.uk)

**Contact:** Steve Sargent – Service Manager Housing Strategy Team 01942  
827702 [S.Sargent@wigan.gov.uk](mailto:S.Sargent@wigan.gov.uk)

### Wigan Strategic Gypsy & Traveller Group

This group is made up of officers from different Council departments that work with Gypsy and Traveller communities in the Borough. Whilst the range of work is not restricted just to Housing, Housing is a major subject for this community. Indeed there are 2 major pieces of research being carried out at the moment that will inform the statutory Accommodation Needs Assessment work to be carried out in 2008.

**Chair & Contact:** Steve Martlew - Housing Policy Officer 01942 486788  
[S.Martlew@wigan.gov.uk](mailto:S.Martlew@wigan.gov.uk)

### Landlords Forum

This is chaired by Anees Mank and meets twice a year. The Forum is aimed at Private Landlords and is aimed at giving advice and support as well as sharing new initiatives/legislation and promoting good practice.

**Chair:** John O'Donnell North West Landlords Forum

**Contact:** Anees Mank – Private Sector Housing Manager  
01942 733338 [A.Mank@wigan.gov.uk](mailto:A.Mank@wigan.gov.uk)

### Housing Options Group

This Forum is aimed at strengthening the relationship between the Council, Wigan & Leigh Housing and the Housing Associations (RSLs). It aims to provide an awareness of issues facing each organisation and provide solutions for solving any problems.

**Chair & Contact:** Debbie Emmitt – Group Manager Housing Options  
01942 767341 [D.Emmitt@walh.co.uk](mailto:D.Emmitt@walh.co.uk)