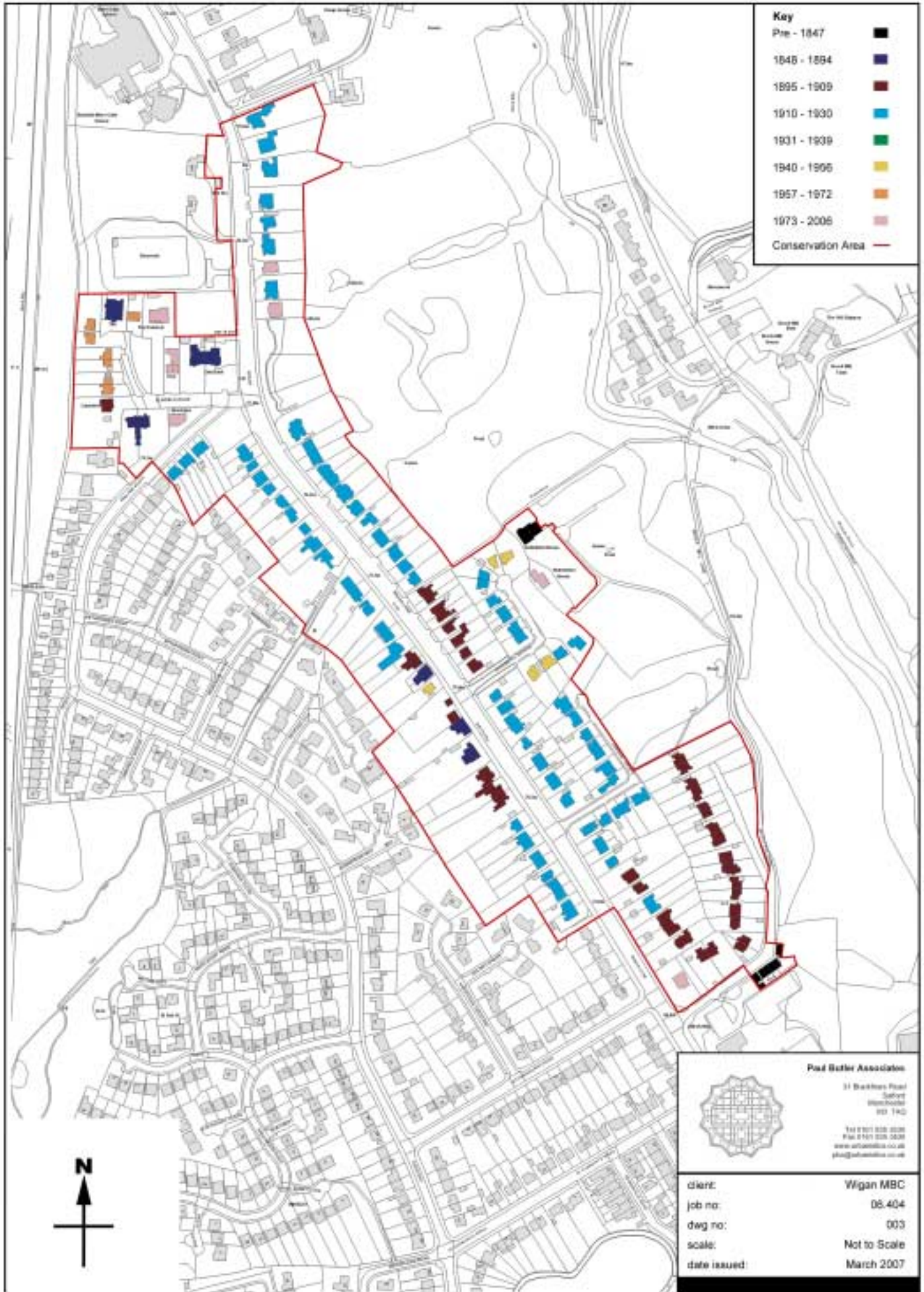


Green Hill Conservation Area: The Growth of Green Hill



Key	
Pre - 1847	■
1848 - 1894	■
1895 - 1909	■
1910 - 1930	■
1931 - 1939	■
1940 - 1995	■
1957 - 1972	■
1973 - 2006	■
Conservation Area	—



Paul Butler Associates
 31 Bankers Road
 Salford
 Greater Manchester
 M6 1AG

Tel 0161 828 2200
 Fax 0161 828 2629
www.pbaassociates.co.uk
pba@pbaassociates.co.uk

client:	Wigan MBC
job no:	06.404
dwg no:	003
scale:	Not to Scale
date issued:	March 2007