



Mapping Poverty in Wigan Borough Report 5

Indices of Deprivation 2007

Contents

	Page
1. Introduction	3
2. Background	3
3. Indices at Local Level	3
4. Index of Multiple Deprivation 2007	5
5. Changes in Deprivation	9
6. Income Deprivation Domain	11
7. Employment Deprivation Domain	13
8. Health Deprivation and Disability Domain	15
9. Education, Skills and Training Deprivation Domain	17
10. Barriers to Housing and Services Domain	19
11. Crime Domain	21
12. Living Environment Deprivation Domain	23
13. Income Deprivation Affecting Children	24
14. Income Deprivation Affecting Older People	26
15. Indices at District Level	28
16. Commentary	30
17. Conclusion	32
18. Appendix – Deprivation Indicators	33

We can make this information available in other formats and languages on request.

Contact us at:

Wigan Council
Environmental Services Department
Civic Buildings
New Market Street
Wigan
WN1 1RP

Phone: 01942 404249

Email: environmentalservices@wigan.gov.uk

Web Site: www.wigan.gov.uk

Indices of Deprivation 2007

1. Introduction

This report provides an overview of the Indices of Deprivation 2007, published by the Department for Communities and Local Government, and an initial interpretation of the results for Wigan Borough.

2. Background

This is an update of the Indices of Deprivation 2004 and has again been published at Super Output Area level. Each Super Output Area has an average of 1500 population and there are 200 Super Output Areas in the Borough (there are a total of 32,482 in England). It is also published at District level.

This is the first time that the Indices of Deprivation have been published at the same levels using similar data sources. This means that it is now possible to make some comparisons of changes over time by comparing the change in ranking in England. It should be noted that nationally it takes some time to bring together comparable data from a number of different sources. Therefore the Indices of Deprivation 2004 were largely based on data from 2001 and 2002; while the Indices of Deprivation 2007 are largely based on data from 2004 and 2005, but with some still going back to 2001. So any more recent intervention through regeneration initiatives or investment would not have worked through into the data.

The source for the information contained in this report is the Indices of Deprivation 2007. Various other background documents and all the data contained in Indices of Deprivation 2007 are available on the Department for Communities and Local Government web site.

3. Indices at local level

The Indices include a total of 38 indicators and this data is presented by 7 Domains based on the continuing premise that multiple deprivation has a number of separate dimensions as follows:-

- Income
- Employment
- Health and Disability
- Education, Skills and Training
- Barriers to Housing and Services
- Crime
- Living Environment

In addition two supplementary Indices have been constructed by extracting related data from the Income Domain. These are:-

- Income Deprivation Affecting Children
- Income Deprivation Affecting Older People

A detailed list of all the indicators is shown in the Appendix.

Each of these combines a number of different indicators together to produce a score for each Super Output Area and also a ranking in England (where 1 is the most deprived Super Output Area and 32,482 the least deprived). Two additional pieces of information have been developed to produce a rank in Wigan Borough for each Super Output Area (where 1 is the most deprived Super Output Area and 200 the least deprived) and an indication of which range (by 10 percent bands) the Super Output Area falls in England.

Data for the overall Index of Multiple Deprivation 2007 and the seven domains and two income indexes is provided in the following sections. As an aid to interpreting this, in each section:-

- The first table sets out the number and percentage of Super Output Areas in the Borough by 10 percent bands in England. The 1 to 10% band is the most deprived. Any figure above 20 (or 10 percent) shows a higher level than the national average.
- There is also an indication of the change of rankings in Super Output Areas between the 2004 and 2007 Indices. A reduction in numbers in the most deprived bands or an increase in numbers in the least deprived bands means that there has been a relative improvement.
- There is a second table for each domain showing the top ten most deprived Super Output Areas in the Borough and the relative change for these areas. A positive sign (+) shows that the area has become relatively less deprived and a negative sign (-) shows the area has become relatively more deprived between 2004 and 2007.

A higher number ranking means that the area has become relatively less deprived; a lower number ranking means that the area has become relatively more deprived.

Care needs to be taken in interpreting lower levels of deprivation. The indicators which have been used have been chosen because they represent different aspects of deprivation. A lack of deprivation does not necessarily equate to affluence. Therefore, the Super Output Areas with the highest ranks are not necessarily affluent, just less deprived.

4. Index of Multiple Deprivation 2007

All of the 7 key Domains have then been combined to form the main Index of Multiple Deprivation 2007. The following weightings were used to combine the Domains into an Index of Multiple Deprivation:-

- Income 22.5%
- Employment 22.5%
- Health and Disability 13.5%
- Education, Skills and Training 13.5%
- Barriers to Housing and Services 9.3%
- Crime 9.3%
- Living Environment 9.3%

The main characteristics in the Borough are set out in the table below:-

Index of Multiple Deprivation 2007

Percentage Range in England	Number of Super Output Areas in Wigan	Percentage of Super Output Areas in Wigan	Change between 2004 and 2007
1 to 10%	29	14.5	-3
11 to 20%	35	17.5	-6
21 to 30%	21	10.5	-7
31 to 40%	25	12.5	2
41 to 50%	19	9.5	1
51 to 60%	21	10.5	0
61 to 70%	20	10.0	-2
71 to 80%	21	10.5	8
81 to 90%	9	4.5	7
91 to 100%	0	0.0	0

This shows that there has been an improvement with 16 (or 8%) less Super Output Areas in the most deprived ranges (in the range 1 to 30%) and consequently more in the lower ranges. But there are still higher than average levels in the most deprived ranges with 14.5% in the highest 10% in England, 42.5% in the highest 30% and none in the least deprived range.

The tables below give further indications of the levels and changes of deprivation in the Borough in the highest 10% range in England. For the ranking of deprivation of a Super Output Area: a positive sign (+) shows an improvement and a negative sign (-) shows a deterioration between 2004 and 2007.

It is clear that there are some areas with extremely high levels of deprivation. Income, employment, health and education deprivation are the key drivers of multiple deprivation in the Super Output Areas with the highest levels of the deprivation in the Borough.

One Super Output Area (Higher Folds South) moved into highest 10% in England and four have moved out.

Most deprived Super Output Areas in Wigan (range up to 10% in England) for Index of Multiple Deprivation 2007

Wigan Rank	Rank in England	% Range in England	Change 2004 to 2007	Super Output Area Name	Township
1	240	0 to 1	-	Worsley Hall	Wigan South
2	412	1 to 2	+	Worsley Hall North	Wigan South
3	470	1 to 2	+	Norley East	Wigan South
4	654	2 to 3	+	Marsh Green West	Wigan South
5	725	2 to 3	-	Hag Fold North	Atherton
6	759	2 to 3	-	Scholes	Wigan North
7	872	2 to 3	-	Plank Lane / Crankwood	Leigh
8	903	2 to 3	+	Worsley Mesnes North	Wigan South
9	953	2 to 3	-	Westleigh East	Leigh
10	954	2 to 3	-	Hag Fold South	Atherton
11	1080	3 to 4	-	Higher Folds North	Leigh
12	1090	3 to 4	-	Higher Ince	Wigan North
13	1293	3 to 4	+	Marsh Green East	Wigan South
14	1510	4 to 5	-	Shakerley	Tyldesley, Astley
15	1678	5 to 6	+	Scholes / Birkett Bank	Wigan North
16	1810	5 to 6	-	Platt Bridge North East	Hindley, Abram
17	1859	5 to 6	+	Woodcock Drive Estate	Hindley, Abram
18	1965	6 to 7	+	Beech Hill West	Wigan North
19	2099	6 to 7	-	Hag Fold West	Atherton
20	2149	6 to 7	-	Siddow Common	Leigh
21	2176	6 to 7	-	Darlington Street East	Wigan North
22	2435	7 to 8	+	Chapel Fields Estate North	Hindley, Abram
23	2790	8 to 9	+	Springfield / Wigan Town Centre	Wigan North
24	2926	9 to 10	-	Lower Ince	Wigan North
25	2966	9 to 10	+	Lower Ince / Ince Green Lane	Wigan North
26	3011	9 to 10	+	Hag Fold East	Atherton
27	3027	9 to 10	-	Westleigh West	Leigh
28	3041	9 to 10	+	Higher Ince / Manchester Road	Wigan North
29	3221	9 to 10	-	Higher Folds South	Leigh

Most deprived Super Output Areas in Wigan for Index of Multiple Deprivation 2007 compared with Domains

Wigan Rank	Super Output Area Name	Index of Multiple Deprivation	Income	Employment	Health & Disability	Education, Training & Skills	Barriers to Services & Housing	Crime	Living Environment
1	Worsley Hall	1 to 10	1 to 10	1 to 10	1 to 10	1 to 10	61 to 70	11 to 20	61 to 70
2	Worsley Hall North	1 to 10	1 to 10	1 to 10	1 to 10	1 to 10	61 to 70	21 to 30	61 to 70
3	Norley East	1 to 10	1 to 10	1 to 10	1 to 10	1 to 10	61 to 70	1 to 10	61 to 70
4	Marsh Green West	1 to 10	1 to 10	1 to 10	1 to 10	1 to 10	61 to 70	21 to 30	61 to 70
5	Hag Fold North	1 to 10	1 to 10	1 to 10	1 to 10	1 to 10	51 to 60	21 to 30	61 to 70
6	Scholes	1 to 10	1 to 10	1 to 10	1 to 10	1 to 10	81 to 90	11 to 20	21 to 30
7	Plank Lane / Crankwood	1 to 10	1 to 10	1 to 10	1 to 10	1 to 10	21 to 30	21 to 30	61 to 70
8	Worsley Mesnes North	1 to 10	1 to 10	1 to 10	1 to 10	1 to 10	31 to 40	11 to 20	41 to 50
9	Westleigh East	1 to 10	1 to 10	1 to 10	1 to 10	1 to 10	71 to 80	11 to 20	61 to 70
10	Hag Fold South	1 to 10	1 to 10	1 to 10	1 to 10	1 to 10	71 to 80	1 to 10	41 to 50
11	Higher Folds North	1 to 10	1 to 10	1 to 10	1 to 10	1 to 10	71 to 80	11 to 20	51 to 60
12	Higher Ince	1 to 10	1 to 10	1 to 10	1 to 10	1 to 10	31 to 40	31 to 40	81 to 90
13	Marsh Green East	1 to 10	1 to 10	1 to 10	1 to 10	1 to 10	61 to 70	51 to 60	51 to 60
14	Shakerley	1 to 10	1 to 10	1 to 10	1 to 10	1 to 10	31 to 40	1 to 10	71 to 80
15	Scholes / Birkett Bank	1 to 10	1 to 10	1 to 10	1 to 10	1 to 10	61 to 70	11 to 20	31 to 40
16	Platt Bridge North East	1 to 10	1 to 10	1 to 10	1 to 10	1 to 10	71 to 80	31 to 40	41 to 50
17	Woodcock Drive Estate	1 to 10	1 to 10	1 to 10	1 to 10	1 to 10	41 to 50	11 to 20	41 to 50
18	Beech Hill West	1 to 10	1 to 10	1 to 10	1 to 10	1 to 10	61 to 70	31 to 40	81 to 90
19	Hag Fold West	1 to 10	1 to 10	1 to 10	1 to 10	1 to 10	61 to 70	31 to 40	71 to 80
20	Siddow Common	1 to 10	1 to 10	1 to 10	1 to 10	1 to 10	41 to 50	21 to 30	51 to 60
21	Darlington Street East	1 to 10	11 to 20	1 to 10	1 to 10	11 to 20	71 to 80	31 to 40	21 to 30
22	Chapel Fields Estate North	1 to 10	11 to 20	1 to 10	1 to 10	1 to 10	51 to 60	21 to 30	41 to 50
23	Springfield / Wigan Town Centre	1 to 10	11 to 20	1 to 10	1 to 10	21 to 30	51 to 60	1 to 10	11 to 20
24	Lower Ince	1 to 10	11 to 20	1 to 10	1 to 10	1 to 10	81 to 90	11 to 20	31 to 40
25	Lower Ince / Ince Green Lane	1 to 10	11 to 20	1 to 10	1 to 10	1 to 10	71 to 80	11 to 20	31 to 40
26	Hag Fold East	1 to 10	11 to 20	1 to 10	1 to 10	11 to 20	51 to 60	41 to 50	61 to 70
27	Westleigh West	1 to 10	11 to 20	1 to 10	11 to 20	11 to 20	21 to 30	1 to 10	31 to 40
28	Higher Ince / Manchester Road	1 to 10	11 to 20	1 to 10	1 to 10	11 to 20	81 to 90	11 to 20	21 to 30
29	Higher Folds South	1 to 10	11 to 20	1 to 10	1 to 10	11 to 20	51 to 60	21 to 30	51 to 60

Index of Multiple Deprivation 2007

(Source: Department for Communities and Local Government, 2007)

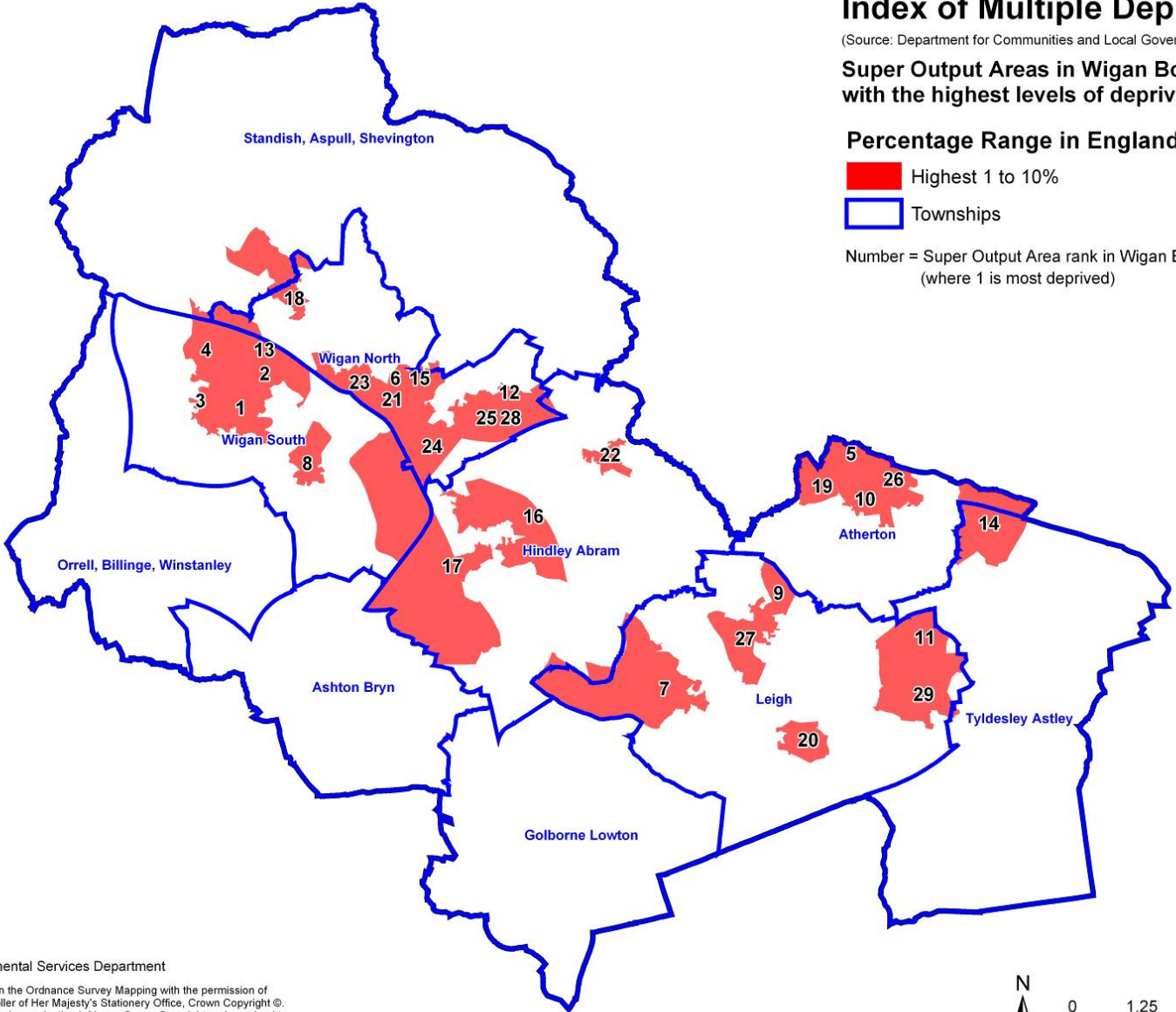
Super Output Areas in Wigan Borough compared with the highest levels of deprivation in England


Percentage Range in England

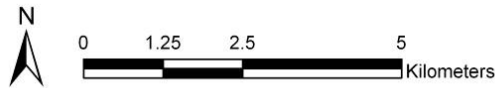
Highest 1 to 10%

Townships

Number = Super Output Area rank in Wigan Borough (where 1 is most deprived)




 Environmental Services Department
 Based upon the Ordnance Survey Mapping with the permission of
 The Controller of Her Majesty's Stationery Office, Crown Copyright ©.
 Unauthorised reproduction infringes Crown Copyright and may lead to
 prosecution or civil proceedings.
 Wigan MBC Local Authority Licence No. 100019578, 2009.



5. Changes in Deprivation

This is the first time that it has been possible to make some comparisons of changes over time in the Indices of Deprivation. A comparison can be made of the change in ranking in England between the 2004 and 2007 indices. At this stage any change could be interpreted as a trend but there were some overall patterns emerging.

Change in Rankings of Super Output Areas

	Super Output Areas with higher ranking 2004 to 2007 (less deprived)		Super Output Areas with lower ranking 2004 to 2007 (more deprived)	
	No.	%	No.	%
Index of Multiple Deprivation	169	84.5	31	15.5
Income	142	71.0	58	29.0
Employment	126	63.0	74	37.0
Health deprivation and disability	183	91.5	17	8.5
Education, skills and training	70	35.0	130	65.0
Barriers to housing and services	145	72.5	55	27.5
Crime	146	73.0	54	27.0
Living environment	177	88.5	23	11.5
Income affecting Children	143	71.5	57	28.5
Income affecting Older People	101	50.5	99	49.5

This table shows that there was generally significant improvement between 2004 and 2007, with an average of 70% of Super Output Areas improving on their relative ranking in England across all the domains.

However the number of Super Output Areas improving in the employment domain and the income affecting older people index was lower than average and in the education, skills and training domain was significantly lower.

Super Output Areas in Wigan in the most deprived 10% ranks in England

	2004 Number	2007 Number	Change Number
Index of Multiple Deprivation	32	29	-3
Income	21	20	-1
Employment	53	49	-4
Health deprivation and disability	69	53	-16
Education, skills and training	29	32	3
Barriers to housing and services	0	0	0
Crime	21	10	-11
Living environment	13	3	-10
Income affecting Children	18	15	-3
Income affecting Older People	19	19	0

This table shows that the general improvements that occurred in the borough were reflected in the most deprived areas with most domains having less Super Output Areas in the most deprived 10% in England.

Super Output Areas in Wigan in the most deprived 10% ranks in England

	2007 Number	More deprived Number	%
Index of Multiple Deprivation	29	16	55%
Income	20	11	55%
Employment	49	36	73%
Health deprivation and disability	53	11	21%
Education, skills and training	32	18	56%
Barriers to housing and services	0	0	n/a
Crime	10	3	30%
Living environment	3	1	33%
Income affecting Children	15	7	47%
Income affecting Older People	19	14	74%

However this table shows that, while the overall numbers of Super Output Areas in the most deprived 10% in England had declined:

- More than half had become more deprived in the employment, income and education domains and the overall Index of Multiple Deprivation.
- More than half had become less deprived in the health, crime and living environment domains.

6. Income Deprivation Domain

This domain measures adults and children in households that experience income deprivation in an area through reliance on a number of benefits. The combined indicators are: Income Support, Income-Based Job Seekers Allowance, Pension Credit (Guarantee), Working Tax Credit, Child Tax Credit (not eligible for the previous benefits) and National Asylum Support.

Income Deprivation Domain 2007

Percentage Range in England	Number of Super Output Areas in Wigan	Percentage of Super Output Areas in Wigan	Change between 2004 and 2007
1 to 10%	20	10.0	-1
11 to 20%	24	12.0	-4
21 to 30%	28	14.0	3
31 to 40%	17	8.5	-1
41 to 50%	15	7.5	-2
51 to 60%	20	10.0	-1
61 to 70%	12	6.0	-1
71 to 80%	22	11.0	1
81 to 90%	28	14.0	-1
91 to 100%	14	7.0	7

The Borough is known to be a relatively low income area but it should be noted that the indicators relate to people on benefit. It is therefore a proxy for income deprivation as it does not directly measure low income. 36% of the Borough is in the highest 30% in England.

There was improvement generally in 74% of the Borough but 55% of areas in the highest 10% have not improved meaning that the gap has widened.

Highest ranking Super Output Areas in Wigan in the most deprived range (up to 10%) in England - Income Deprivation Domain

Wigan Rank	Rank in England	Change 2004 to 2007	Super Output Area Name	Township
1	237	+	Worsley Hall	Wigan South
2	617	+	Worsley Hall North	Wigan South
3	877	+	Norley East	Wigan South
4	878	+	Hag Fold North	Atherton
5	1079	-	Westleigh East	Leigh
6	1250	-	Higher Ince	Wigan North
7	1260	-	Plank Lane / Crankwood	Leigh
8	1400	-	Marsh Green East	Wigan South
9	1428	-	Higher Folds North	Leigh
10	1537	-	Shakerley	Tyldesley, Astley


Indices of Multiple Deprivation 2007

(Source: Department for Communities and Local Government, 2007)

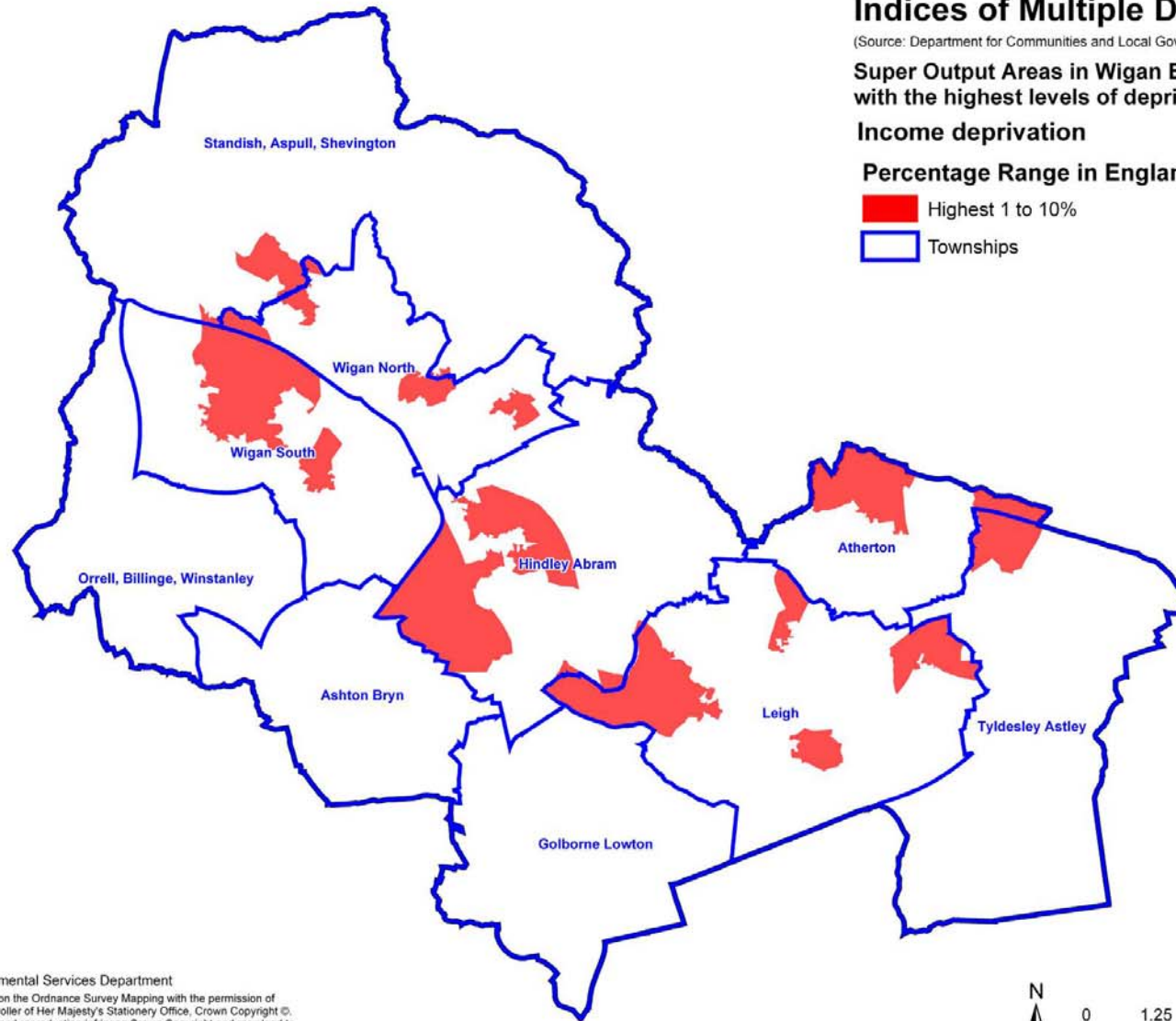
Super Output Areas in Wigan Borough compared with the highest levels of deprivation in England

Income deprivation

Percentage Range in England

 Highest 1 to 10%

 Townships



Environmental Services Department

Based upon the Ordnance Survey Mapping with the permission of The Controller of Her Majesty's Stationery Office, Crown Copyright ©. Unauthorised reproduction infringes Crown Copyright and may lead to prosecution or civil proceedings. Wigan MBC Local Authority Licence No. 100019578, 2008.



7. Employment Deprivation Domain

This domain measures employment deprivation based on involuntary exclusion of the working age population from the labour market. The combined indicators are: Recipients of Jobseekers Allowance, Incapacity Benefit or Severe Disablement Allowance and participants in the New Deal for the 18-24s, 25+ or Lone Parents.

Employment Deprivation Domain 2007

Percentage Range in England	Number of Super Output Areas in Wigan	Percentage of Super Output Areas in Wigan	Change between 2004 and 2007
1 to 10%	49	24.5	-4
11 to 20%	45	22.5	-2
21 to 30%	26	13.0	-13
31 to 40%	22	11.0	-3
41 to 50%	26	13.0	8
51 to 60%	23	11.5	15
61 to 70%	6	3.0	1
71 to 80%	3	1.5	-2
81 to 90%	0	0.0	0
91 to 100%	0	0.0	0

There are very high levels of employment deprivation in spite of a relatively low unemployment rate in recent years. 25% of the Borough is in the highest 10% in England and 60% in the highest 30%. Large numbers are unable to work and approximately 70% of these are on Incapacity Benefit; there is a clear link with health and disability deprivation.

There has been improvement but comparatively this has been less than other domains suggesting that worklessness is one of the key issues for the Borough. Significantly there has been no improvement in 74% of the 10% most deprived areas.

Highest ranking Super Output Areas in Wigan in the most deprived range (up to 10%) in England - Employment Deprivation Domain

Wigan Rank	Rank in England	Change 2004 to 2007	Super Output Area Name	Township
1	92	-	Scholes	Wigan North
2	119	-	Worsley Hall	Wigan South
3	283	-	Higher Ince	Wigan North
4	296	-	Worsley Hall North	Wigan South
5	359	-	Hag Fold South	Atherton
6	360	-	Marsh Green West	Wigan South
7	408	-	Higher Folds North	Leigh
8	417	-	Westleigh East	Leigh
9	481	-	Worsley Mesnes North	Wigan South
10	498	-	Darlington Street East	Wigan North


Indices of Multiple Deprivation 2007

(Source: Department for Communities and Local Government, 2007)

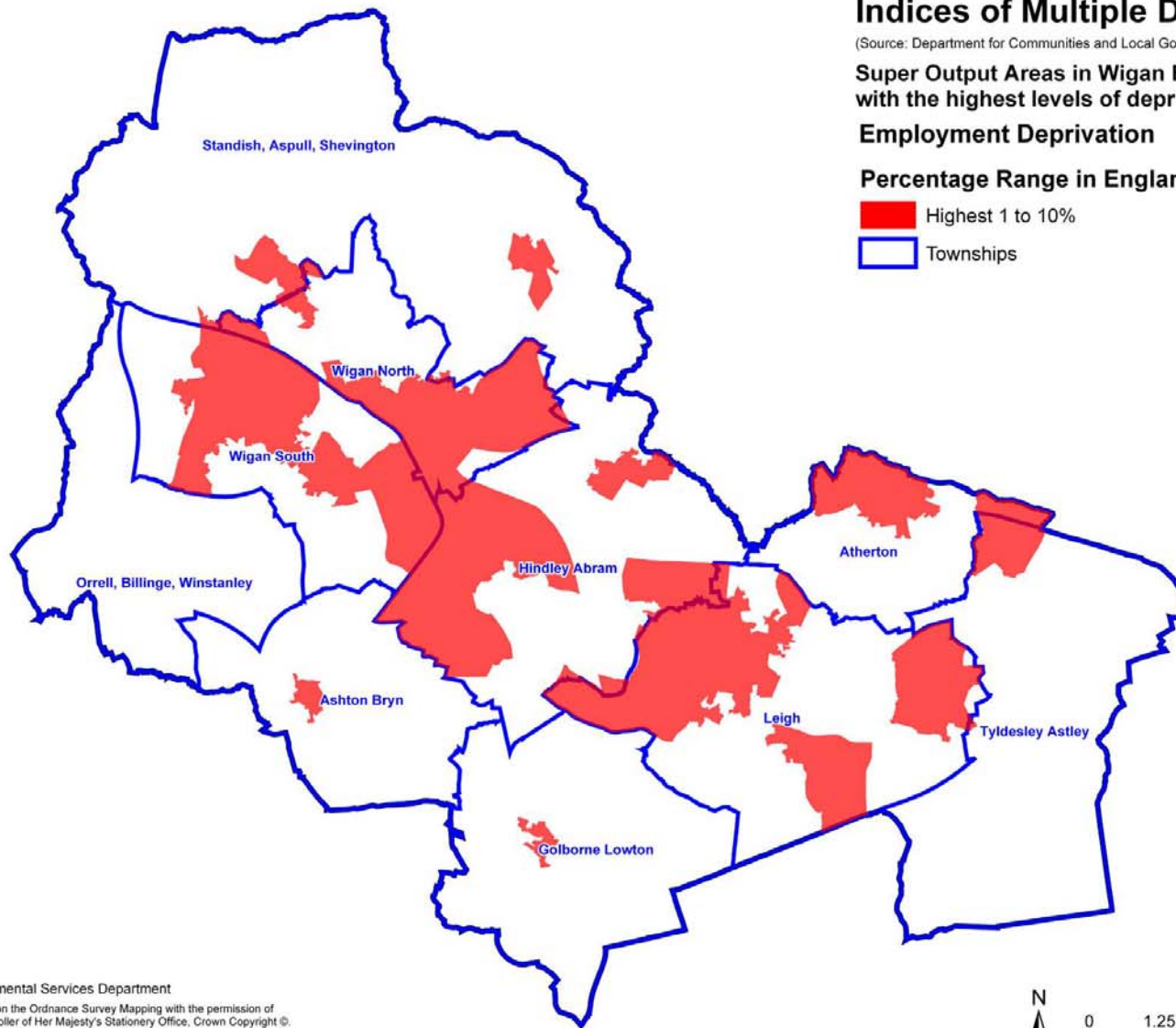
Super Output Areas in Wigan Borough compared with the highest levels of deprivation in England


Employment Deprivation

Percentage Range in England

 Highest 1 to 10%

 Townships



 Environmental Services Department
Based upon the Ordnance Survey Mapping with the permission of
The Controller of Her Majesty's Stationery Office, Crown Copyright ©.
Unauthorised reproduction infringes Crown Copyright and may lead to
prosecution or civil proceedings.
Wigan MBC Local Authority Licence No. 100019578, 2008.



8. Health Deprivation and Disability Domain

This domain measures rates of poor health, early mortality and disability in an area covering the entire age range. The combined indicators are: Years of Potential Life Lost, Comparative Illness and Disability Ratio, Measures of acute morbidity and adults under 60 suffering from mood or anxiety disorders based on prescribing.

Health Deprivation and Disability Domain 2007

Percentage Range in England	Number of Super Output Areas in Wigan	Percentage of Super Output Areas in Wigan	Change between 2004 and 2007
1 to 10%	53	26.5	-16
11 to 20%	37	18.5	-7
21 to 30%	34	17.0	-5
31 to 40%	36	18.0	0
41 to 50%	27	13.5	16
51 to 60%	13	6.5	12
61 to 70%	0	0.0	0
71 to 80%	0	0.0	0
81 to 90%	0	0.0	0
91 to 100%	0	0.0	0

There are very high levels with 26% in the highest 10% in England and 62% in the highest 30%. There is still no part of the Borough in the least deprived 40%; therefore approximately 40% (nearly 20m) people in England are less affected by health deprivation than the least deprived in Wigan.

While there has been considerable improvement in more than 90% of the Borough, crucially 65% of areas in the highest 10% have not improved meaning that the gap has widened.

Highest ranking Super Output Areas in Wigan in the most deprived range (up to 10%) in England - Health and Disability Domain

Wigan Rank	Rank in England	Change 2004 to 2007	Super Output Area Name	Township
1	238	+	Worsley Hall North	Wigan South
2	294	+	Scholes	Wigan North
3	370	-	Worsley Hall	Wigan South
4	443	+	Norley East	Wigan South
5	449	+	Plank Lane / Crankwood	Leigh
6	465	-	Marsh Green East	Wigan South
7	536	+	Marsh Green West	Wigan South
8	575	+	Hag Fold South	Atherton
9	667	+	Worsley Mesnes North	Wigan South
10	681	+	Hag Fold North	Atherton


Indices of Multiple Deprivation 2007

(Source: Department for Communities and Local Government, 2007)

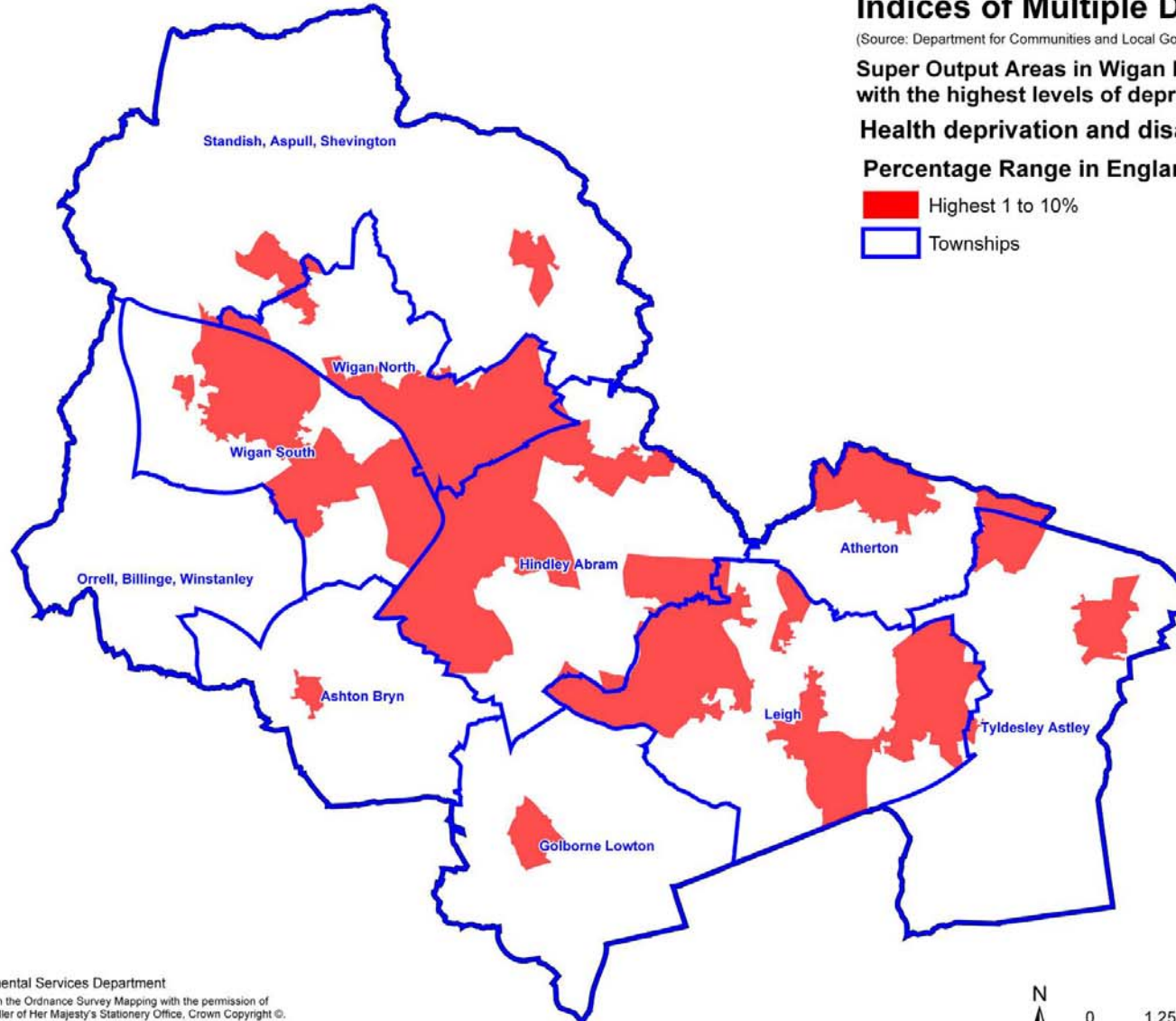
Super Output Areas in Wigan Borough compared with the highest levels of deprivation in England

Health deprivation and disability

Percentage Range in England

 Highest 1 to 10%

 Townships



Environmental Services Department
Based upon the Ordnance Survey Mapping with the permission of
The Controller of Her Majesty's Stationery Office, Crown Copyright ©.
Unauthorised reproduction infringes Crown Copyright and may lead to
prosecution or civil proceedings.
Wigan MBC Local Authority Licence No. 100019578, 2008.



9. Education, Skills and Training Deprivation Domain

This domain measures the extent of deprivation in terms of education, skills and training in a local area. The indicators are structured into two sub domains: one covers education deprivation for children and young people in the area, and the other covers lack of skills and qualifications among the working age adult population.

Education, Skills and Training Deprivation Domain

Percentage Range in England	Number of Super Output Areas in Wigan	Percentage of Super Output Areas in Wigan	Change between 2004 and 2007
1 to 10%	32	16.0	3
11 to 20%	35	17.5	0
21 to 30%	30	15.0	5
31 to 40%	16	8.0	1
41 to 50%	19	9.5	0
51 to 60%	19	9.5	-6
61 to 70%	17	8.5	5
71 to 80%	16	8.0	-5
81 to 90%	11	5.5	-3
91 to 100%	5	2.5	0

In spite of good educational attainment compared with deprivation levels there are still high levels with 16% in the highest 10% in England and 44.5% of the Borough in the highest 30%.

Lack of improvement was possibly due to a lower than average year in 2005 in GCSE results.

Highest ranking Super Output Areas in Wigan in the most deprived range (up to 10%) in England - Education, Training and Skills Domain

Wigan Rank	Rank in England	Change 2004 to 2007	Super Output Area Name	Township
1	99	-	Marsh Green West	Wigan South
2	203	-	Hag Fold North	Atherton
3	228	+	Norley East	Wigan South
4	365	+	Worsley Hall North	Wigan South
5	693	-	Worsley Hall	Wigan South
6	1070	+	Westleigh East	Leigh
7	1168	+	Worsley Mesnes North	Wigan South
8	1224	-	Beech Hill West	Wigan North
9	1389	-	Hag Fold South	Atherton
10	1552	+	Chapel Fields Estate North	Hindley, Abram

Indices of Multiple Deprivation 2007

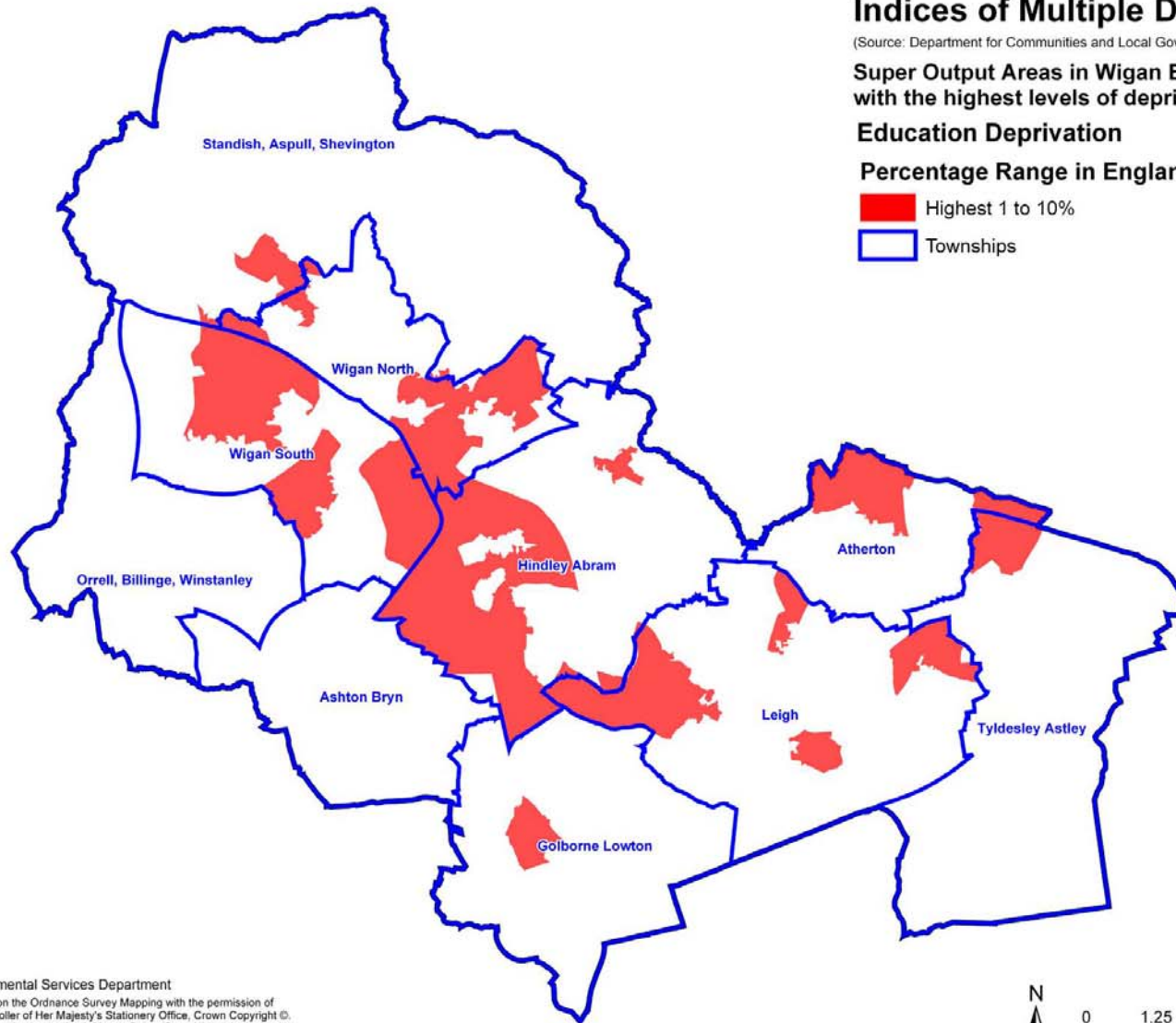
(Source: Department for Communities and Local Government, 2007)

Super Output Areas in Wigan Borough compared with the highest levels of deprivation in England

Education Deprivation

Percentage Range in England

-  Highest 1 to 10%
-  Townships



Environmental Services Department
Based upon the Ordnance Survey Mapping with the permission of
The Controller of Her Majesty's Stationery Office, Crown Copyright ©.
Unauthorised reproduction infringes Crown Copyright and may lead to
prosecution or civil proceedings.
Wigan MBC Local Authority Licence No. 100019578, 2008.



10. Barriers to Housing and Services Domain

The purpose of this domain is to measure barriers to housing and key local services. The indicators are structured into two sub-domains: 'geographical barriers' (which measures distance to services such as GP surgery, general store or supermarket, primary school and Post Office) and 'wider barriers' which includes issues relating to access to housing, such as affordability.

Barriers to Housing and Services Domain

Percentage Range in England	Number of Super Output Areas in Wigan	Percentage of Super Output Areas in Wigan	Change between 2004 and 2007
1 to 10%	0	0.0	0
11 to 20%	2	1.0	0
21 to 30%	14	7.0	2
31 to 40%	20	10.0	2
41 to 50%	20	10.0	-12
51 to 60%	25	12.5	-3
61 to 70%	33	16.5	-7
71 to 80%	39	19.5	-10
81 to 90%	37	18.5	21
91 to 100%	10	5.0	7

This domain shows better than average levels in the highest ranges in England. No areas are in the 10% most deprived in England and only 2 are in the 20% most deprived.

The domain tends to have the appearance of a 'rural deprivation index' as a significant part measures distance to services. As the Borough is predominantly urban in character it is not surprising that more than 70% is in the 50% least deprived.

The geographical characteristics are unlike other domains in that the highest levels were mainly on the edge of urban areas and where housing may not be affordable to all. There are also more areas in the east (particularly in Leigh) rather than the west of the borough.

While most of these are not normally associated with deprivation there are also some areas that are in the higher Index of Multiple Deprivation bands which suggests that there may be issues of access to key services for some areas in terms of distance from these services.

Highest ranking Super Output Areas in Wigan in the most deprived range (up to 10%) in England - Barriers to Housing and Services Domain

Wigan Rank	Rank in England	Change 2004 to 2007	Super Output Area Name	Township
0	0	0	0	0

Highest ranking Super Output Areas in Wigan in the most deprived range (11 to 20%) in England - Barriers to Housing and Services Domain

Wigan Rank	Rank in England	Change 2004 to 2007	Super Output Area Name	Township
1	3955	-	Pennington South	Leigh
2	6308	-	Shevington Moor	Standish, Aspull, Shevington

Highest ranking Super Output Areas in Wigan in the most deprived range (21 to 30%) in England - Barriers to Housing and Services Domain

Wigan Rank	Rank in England	Change 2004 to 2007	Super Output Area Name	Township
3	6809	-	Pennington East	Leigh
4	6967	-	Tamer East	Leigh
5	7131	-	Haigh	Standish, Aspull, Shevington
6	7215	-	Plank Lane / Crankwood	Leigh
7	7315	-	Westleigh West	Leigh
8	7502	+	Pickley Green / Abbey Lane	Leigh
9	8142	+	Chorley Road	Standish, Aspull, Shevington
10	8809	-	Tamer West	Hindley, Abram

11. Crime Domain

This domain measures the rate of recorded crime for four major crime types: burglary, theft, criminal damage and violence, representing the risk of personal and material victimisation at a small area level.

Crime Domain

Percentage Range in England	Number of Super Output Areas in Wigan	Percentage of Super Output Areas in Wigan	Change between 2004 and 2007
1 to 10%	10	5.0	-11
11 to 20%	26	13.0	-4
21 to 30%	23	11.5	-8
31 to 40%	34	17.0	6
41 to 50%	24	12.0	0
51 to 60%	28	14.0	6
61 to 70%	20	10.0	-7
71 to 80%	23	11.5	10
81 to 90%	12	6.0	8
91 to 100%	0	0.0	0

Crime was average with 29.5% of the Borough in the highest 30% in England and had improved significantly in the highest areas of deprivation.

The geographical characteristics are unlike other domains in that the highest levels were in the East (particularly in Leigh) rather than the West of the Borough and there is a link with the main town centres.

Highest ranking Super Output Areas in Wigan in the most deprived range (up to 10%) in England - Crime Domain

Wigan Rank	Rank in England	Change 2004 to 2007	Super Output Area Name	Township
1	255	+	Railway Road / Twist Lane	Leigh
2	1250	-	Pickley Green / Abbey Lane	Leigh
3	1479	+	Westleigh West	Leigh
4	1502	+	Leigh Centre	Leigh
5	1968	+	Springfield / Wigan Town Centre	Wigan North
6	2144	+	Hag Fold South	Atherton
7	2317	+	Newtown	Wigan South
8	2696	+	Norley East	Wigan South
9	2719	-	Twist Lane	Leigh
10	3145	-	Shakerley	Tyldesley, Astley


Indices of Multiple Deprivation 2007

(Source: Department for Communities and Local Government, 2007)

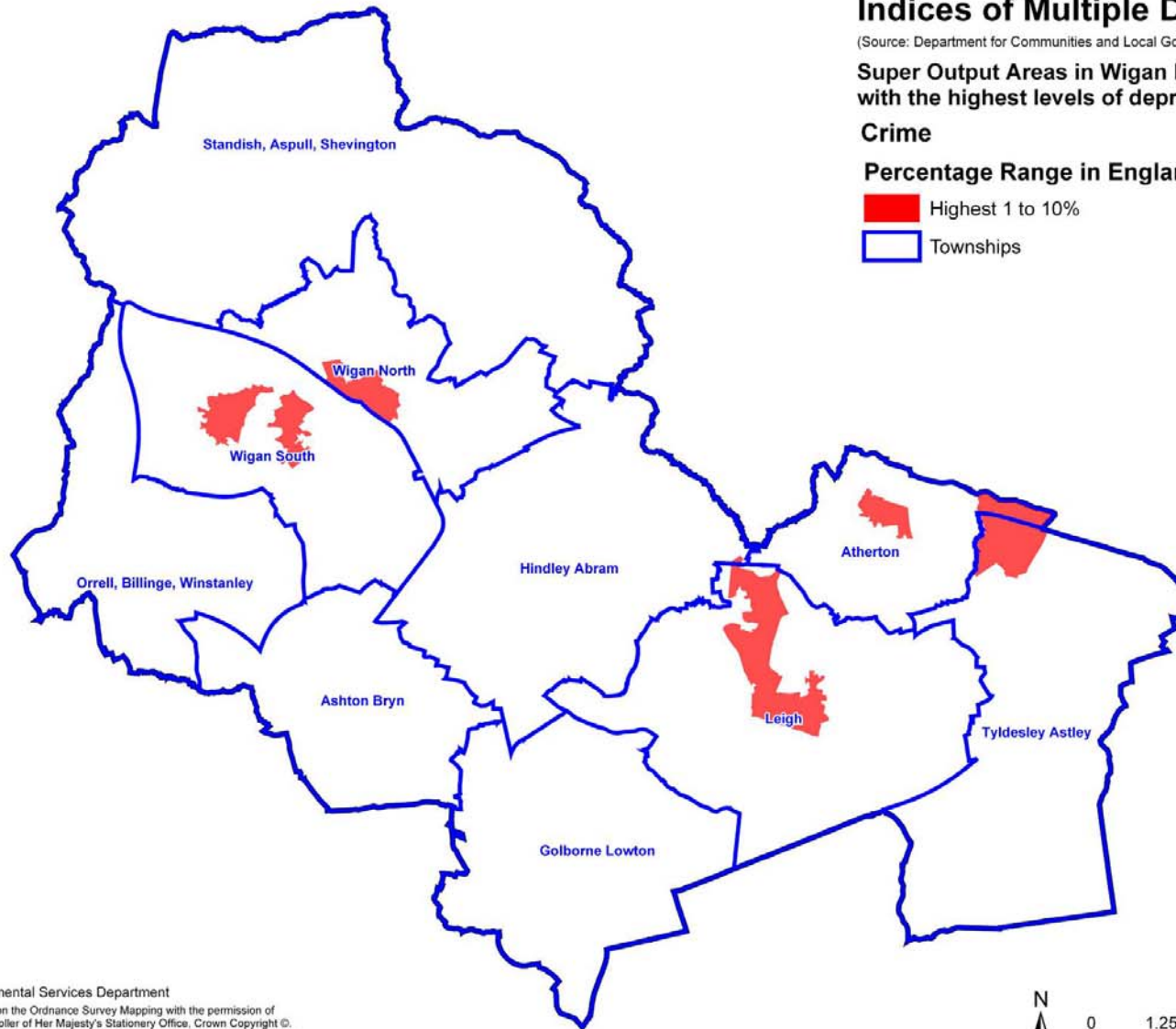
Super Output Areas in Wigan Borough compared with the highest levels of deprivation in England


Crime

Percentage Range in England

 Highest 1 to 10%

 Townships



 Environmental Services Department
Based upon the Ordnance Survey Mapping with the permission of
The Controller of Her Majesty's Stationery Office, Crown Copyright ©.
Unauthorised reproduction infringes Crown Copyright and may lead to
prosecution or civil proceedings.
Wigan MBC Local Authority Licence No. 100019578, 2008.



12. The Living Environment Deprivation Domain

This domain focuses on deprivation characteristics of the living environment. It comprises two sub-domains: the 'indoors' living environment which measures the quality of housing, and the 'outdoors' living environment which contains two measures about air quality and road traffic accidents.

Living Environment Deprivation Domain

Percentage Range in England	Number of Super Output Areas in Wigan	Percentage of Super Output Areas in Wigan	Change between 2004 and 2007
1 to 10%	3	1.5	-10
11 to 20%	9	4.5	-6
21 to 30%	11	5.5	-9
31 to 40%	19	9.5	-12
41 to 50%	32	16.0	-4
51 to 60%	25	12.5	-5
61 to 70%	34	17.0	14
71 to 80%	39	19.5	21
81 to 90%	26	13.0	10
91 to 100%	2	1.0	1

This domain shows better than average levels in the highest ranges in England.

The geographical characteristics are unlike most other domains in that the highest levels were in the East (particularly in Leigh) rather than the West of the Borough and there is a link with a number of town centres.

Highest ranking Super Output Areas in Wigan in the most deprived range (up to 10%) in England - Living Environment Domain

Wigan Rank	Rank in England	Change 2004 to 2007	Super Output Area Name	Township
1	1269	+	Railway Road / Twist Lane	Leigh
2	1378	+	Hilton Park	Leigh
3	1682	-	Wigan Road West	Leigh

Highest ranking Super Output Areas in Wigan in the most deprived range (11 to 20%) in England - Living Environment Domain

Wigan Rank	Rank in England	Change 2004 to 2007	Super Output Area Name	Township
4	3854	+	Twist Lane	Leigh
5	3886	+	Leigh Centre	Leigh
6	4050	+	Springfield / Wigan Town Centre	Wigan North
7	4092	+	Newtown	Wigan South
8	4115	+	Tyldesley Centre	Tyldesley, Astley
9	4160	+	Chapel Street	Leigh
10	4681	+	Atherton Centre	Atherton

13. Income Deprivation Affecting Children Index

The Income Deprivation Affecting Children Index is created from the Income Deprivation Domain (see 6). It represents the proportion of children aged 0 to 15 living in income deprived households.

Income Deprivation Affecting Children Index

Percentage Range in England	Number of Super Output Areas in Wigan	Percentage of Super Output Areas in Wigan	Change between 2004 and 2007
1 to 10%	15	7.5	-3
11 to 20%	15	7.5	-8
21 to 30%	27	13.5	7
31 to 40%	20	10.0	-3
41 to 50%	14	7.0	-5
51 to 60%	17	8.5	-1
61 to 70%	23	11.5	6
71 to 80%	14	7.0	-7
81 to 90%	20	10.0	-5
91 to 100%	35	17.5	19

There has been improvement across the whole Borough which may suggest that there is a link with government policy on reducing child poverty. There were average levels with 7.5% in the highest 10% in England and 28.5% in the highest 30%.

However there are some very high levels in the areas in the highest 10% with between 50% and 60% of children living in households affected by poverty and half of these have not improved.

Highest ranking Super Output Areas in Wigan in the most deprived range (up to 10%) in England- Income Deprivation Affecting Children Index

Wigan Rank	Rank in England	Change 2004 to 2007	Super Output Area Name	Township
1	964	+	Worsley Hall	Wigan South
2	1136	-	Worsley Hall North	Wigan South
3	1285	+	Higher Ince	Wigan North
4	1342	-	Westleigh East	Leigh
5	1680	-	Shakerley	Tyldesley, Astley
6	1997	-	Plank Lane / Crankwood	Leigh
7	2190	+	Beech Hill West	Wigan North
8	2426	+	Hag Fold North	Atherton
9	2584	+	Scholes	Wigan North
10	2781	+	Norley East	Wigan South

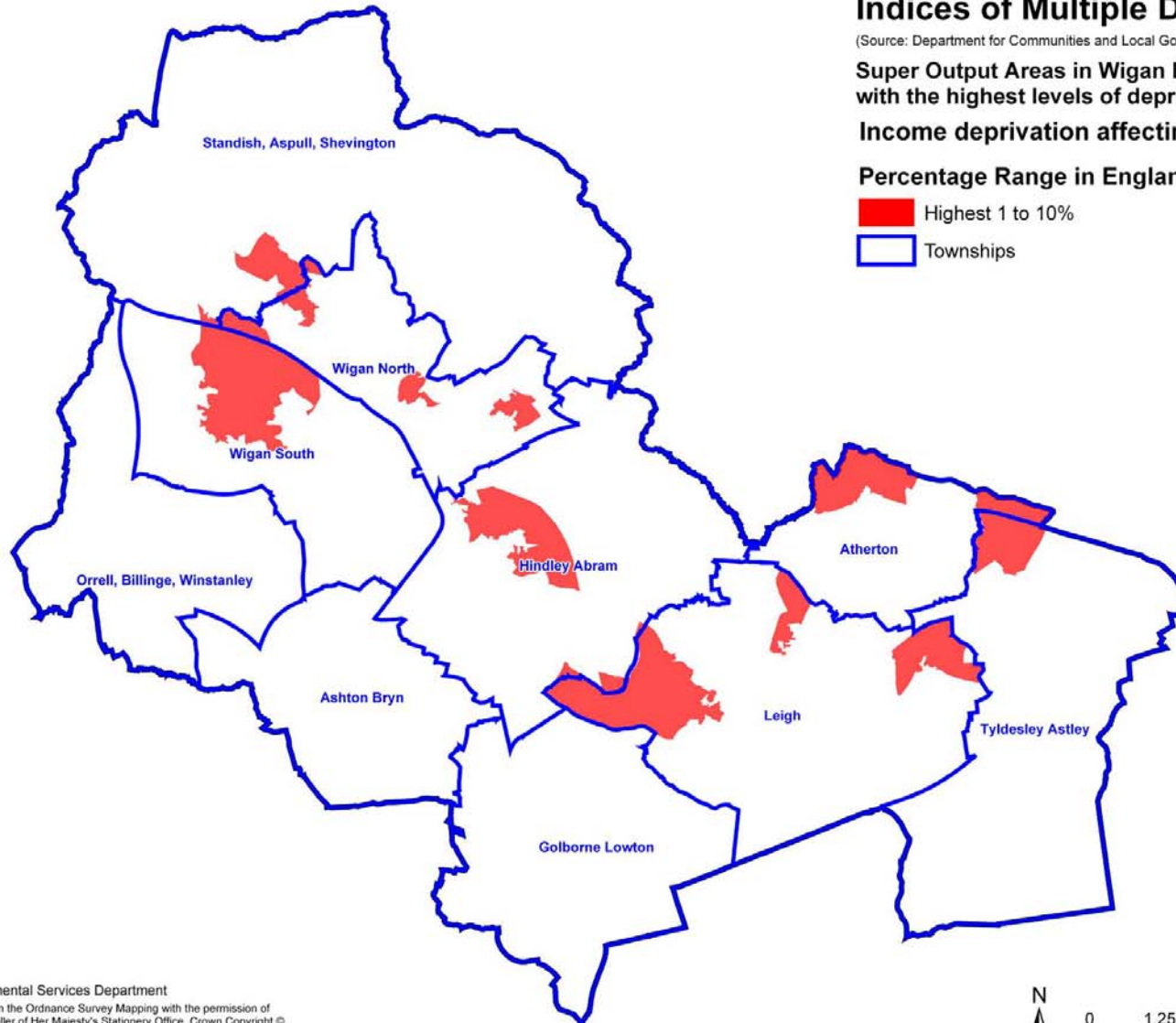
Indices of Multiple Deprivation 2007

(Source: Department for Communities and Local Government, 2007)

Super Output Areas in Wigan Borough compared with the highest levels of deprivation in England
Income deprivation affecting children index

Percentage Range in England

- Highest 1 to 10%
- Townships



Environmental Services Department
Based upon the Ordnance Survey Mapping with the permission of
The Controller of Her Majesty's Stationery Office, Crown Copyright ©.
Unauthorised reproduction infringes Crown Copyright and may lead to
prosecution or civil proceedings.
Wigan MBC Local Authority Licence No. 100019578, 2008.



14. Income Deprivation Affecting Older People Index

The Income Deprivation Affecting Older People Index is created from the Income Deprivation Domain (see 6). It represents the proportion of older people aged 60 and over living in income deprived households.

Income Deprivation Affecting Older People Index

Percentage Range in England	Number of Super Output Areas in Wigan	Percentage of Super Output Areas in Wigan	Change between 2004 and 2007
1 to 10%	19	9.5	0
11 to 20%	37	18.5	1
21 to 30%	26	13.0	3
31 to 40%	16	8.0	-11
41 to 50%	19	9.5	3
51 to 60%	15	7.5	-2
61 to 70%	27	13.5	0
71 to 80%	29	14.5	13
81 to 90%	6	3.0	-12
91 to 100%	5	2.5	4

The changes between 2004 and 2007 were mixed with half improving and half deteriorating. There were average levels with 9.5% in the highest 10% in England but high levels in the next ranges with 41% in the highest 30%.

In the areas in the highest 10% between 40% and 50% of older people are living in households affected by poverty and 75% of these have not improved suggesting that the gap has widened.

Highest ranking Super Output Areas in Wigan in the most deprived range (up to 10%) in England - Income Deprivation Affecting Older People Index

Wigan Rank	Rank in England	Change 2004 to 2007	Super Output Area Name	Township
1	658	+	Worsley Hall North	Wigan South
2	758	+	Worsley Hall	Wigan South
3	781	-	Marsh Green East	Wigan South
4	867	+	Norley East	Wigan South
5	918	-	Plank Lane / Crankwood	Leigh
6	1022	-	Scholes	Wigan North
7	1695	-	Hag Fold South	Atherton
8	1873	-	Woodcock Drive Estate	Hindley, Abram
9	1886	+	Worsley Mesnes North	Wigan South
10	1958	-	Marsh Green West	Wigan South


Indices of Multiple Deprivation 2007

(Source: Department for Communities and Local Government, 2007)

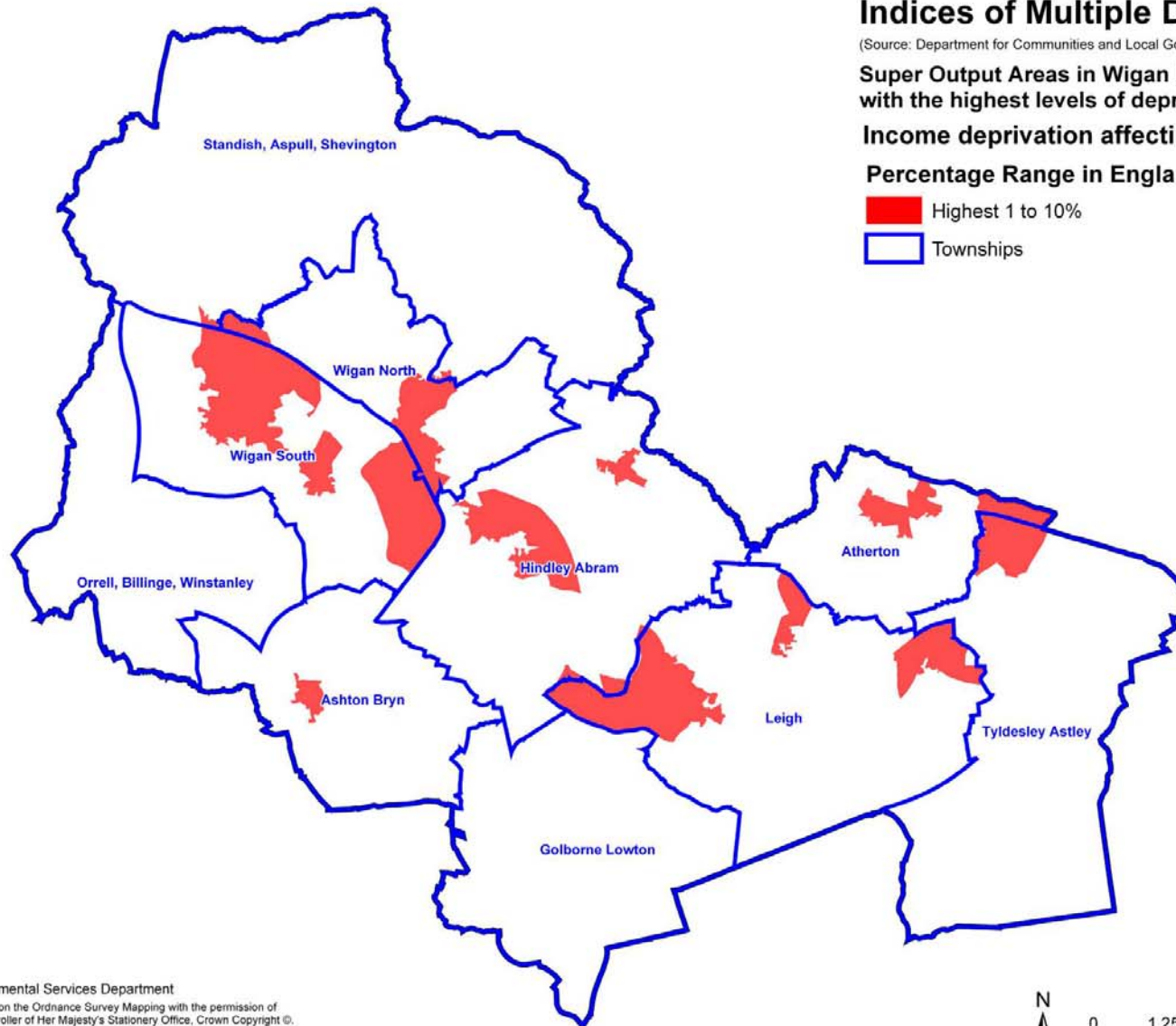
Super Output Areas in Wigan Borough compared with the highest levels of deprivation in England

Income deprivation affecting older people index

Percentage Range in England

 Highest 1 to 10%

 Townships



Environmental Services Department

Based upon the Ordnance Survey Mapping with the permission of The Controller of Her Majesty's Stationery Office, Crown Copyright ©. Unauthorised reproduction infringes Crown Copyright and may lead to prosecution or civil proceedings. Wigan MBC Local Authority Licence No. 100019578, 2008.



15. Indices at District level

While the Indices of Deprivation 2007 was intended as a Super Output Area level index it has also been used to construct a series of indices at District level in England. The six District level presentations are:-

- Employment Scale
- Income Scale
- Average of Super Output Area Scores
- Average of Super Output Area Ranks
- Extent
- Local Concentration

The six district level summaries provide a score and rank for each of the 354 Districts in England, with a rank of 1 being the most deprived and 354 the least deprived, for each measure. These measures are designed to reflect the different patterns of deprivation in different types of area. There is not one set of rankings, there are six, and no particular index is favoured over another. It is important to make use of all of the rankings when forming a view about where the most deprived areas are located in England.

Indices of Deprivation 2007 District Level

Scale	*Rank of Wigan Borough in England	% Range in England
• Employment	9	1 to 10
• Income	41	11 to 20
• Average of Super Output Area Scores	67	11 to 20
• Average of Super Output Area Ranks	80	21 to 30
• Extent	63	11 to 20
• Local Concentration	53	11 to 20
*Rank in England: 1 = most deprived; 354 = least deprived		

- Employment Scale is the number of people who are Employment deprived.
- Income Scale is the number of people who are Income deprived.
- Average of Super Output Area Scores is the population weighted average of the combined scores for the Super Output Areas in a district.
- Average of Super Output Area Ranks is the population weighted average of the combined ranks for the Super Output Areas in a district.
- Extent is the proportion of a district's population living in the most deprived Super Output Areas in the country.

- Local Concentration is the population weighted average of the ranks of a district's most deprived Super Output Areas that contain exactly 10% of the district's population.

In overall terms the Borough continues to appear within the highest 15% of districts in England in 3 out of the 6 Scales and a further 2 out of the 6 Scales are in the highest 20%.

Indices of Deprivation District Level Change

Scale	Rank of Wigan Borough in England#		
	ID 2000	ID 2004	ID 2007
• Employment	9	9	9
• Income	30	40	41
• Average of Scores	63*	53**	67**
• Average of Ranks	57*	54**	80**
• Extent	85*	52**	63**
• Local Concentration	66*	48**	53**
#Rank in England: 1 = most deprived; 354 = least deprived ID = Indices of Deprivation * Ward measure; ** Super Output Area measure			

It is possible to make a direct comparison with the Indices of Deprivation 2000 and the Indices of Deprivation 2004 for two of the scales as these measures were at the same level.

- The Employment Scale continues to be at a particularly high level of deprivation and has remained at the same ranking of 9, within the highest 3% in England, over the three most recent Indices suggesting that worklessness is a key issue for the Borough.
- The Income Scale ranking has improved from 30 to 40 to 41, which is still within the highest 12% in England suggesting that low income as a result of dependence on benefits is a key issue for the Borough.

However it is not possible to make a direct comparison with the Indices of Deprivation 2000 for four of the scales as the previous measures were at Ward rather than Super Output Area level. These four scales all now appear at an improved level of deprivation from the Indices of Deprivation 2004 to the Indices of Deprivation 2007, but three are still within the highest 20% in England.

16. Commentary

This report is intended as an introduction to the main characteristics of the Indices of Deprivation 2007 as it affects Wigan Borough. Some broad views can be drawn from the results. In general there was an improvement in levels of deprivation at national and regional level and this was also reflected locally.

Key characteristics at the **district level**:-

In overall terms the Borough improved between 2004 and 2007, however:

- The Borough continues to appear within the highest 15% most deprived districts in England in 3 out of the 6 national deprivation Scales and 2 out of the 6 Scales are in the highest 20% most deprived.
- The Employment Scale continues to be particularly high and has remained at the same ranking and within the highest 3% most deprived in England.

Key characteristics at the **local Super Output Area level**:-

- Index of Multiple Deprivation - There are high levels, there is wide extent and there is significant concentration of deprivation in some parts. Spatially, the distribution of high levels of multiple deprivation is concentrated in the central / western 'spine' of the borough. The most deprived townships are Wigan North, Wigan South, Hindley Abram, Atherton and Leigh. However here are also pockets of high levels of deprivation in other parts of the borough.
 - There was significant improvement between 2004 and 2007, with 85% of Super Output Areas improving on their relative ranking in England; some by up to 20%. But there are still higher than average levels in the most deprived ranges with 14.5% in the highest 10% in England, 42.5% in the highest 30% and none in the least deprived range.
 - This improvement has not been consistent across the borough, with no clear spatial pattern to the areas that have not improved. But it is significant that of the 15% of Super Output Areas that have not improved half are in the highest 10% of deprivation. So the gap between the most deprived and least deprived areas has widened.
 - All of the highest weighted domains (income, employment, health and education, which are the key drivers of deprivation) still have significantly high levels of deprivation leading to the overall Index of Multiple Deprivation results.
 - These levels of deprivation mean that there are significant inequalities in the borough. People living in our most deprived neighbourhoods are much more likely to suffer from poor health, worklessness, a lack of skills, prosperity and crime. Some of these problems were also getting worse than in other parts of the borough at a time when the overall economy was relatively healthy. As such, these inequalities will be

likely to persist or become more pronounced in a down turn in the economy.

- Significant levels of deprivation occur in the individual measures that are combined to create the index of multiple deprivation, giving a more detailed insight into the background to inequalities:-
 - Income deprivation - The borough is known to be a relatively low income area but it should be noted that the deprivation indicators relate to people on benefit. It is therefore a proxy for income deprivation as it does not directly measure low income. 36% of the borough is in the highest 30% in England. There was improvement generally in 74% of the borough but 55% of areas in the highest 10% have not improved meaning that the gap has widened.
 - Employment deprivation - There are very high levels of employment deprivation in spite of a relatively low unemployment rate in recent years. 25% of the borough is in the highest 10% in England and 60% in the highest 30%. Large numbers are unable to work and approximately 70% of these are on Incapacity Benefit; there is a clear link with health and disability deprivation. There has been improvement but comparatively this has been less than other domains suggesting that worklessness is one of the key issues for the borough. Significantly there has been no improvement in 74% of the 10% most deprived areas meaning that the gap has widened.
 - Health and Disability deprivation - While there has been considerable improvement in more than 90% of the borough there are still very high levels with 26% in the highest 10% in England and 62% in the highest 30%. There is still no part of the borough in the least deprived 40%; therefore approximately 40% (nearly 20m) people in England are less affected by health deprivation than the least deprived in Wigan. Crucially 65% of areas in the highest 10% have not improved meaning that the gap has widened.
 - Education Training and Skills deprivation - In spite of good educational attainment compared with deprivation levels there are still high levels with 16% in the highest 10% in England and 44.5% of the borough in the highest 30%.
 - Crime – The level of crime was average with 29.5% of the borough in the highest 30% in England and had improved significantly in the highest areas of deprivation. The spatial characteristics are unlike other deprivation indicators in that the highest levels were in the east (particularly in Leigh) rather than the west of the borough and there is a link with the main town centres.
 - Income deprivation affecting Children - There has been improvement across the borough and there were average levels with 7.5% in the highest 10% in England and 28.5% in the highest 30%. However there are some very high levels in the areas in the highest 10% with between 50% and 60% of children living in households affected by poverty and half of these have not improved.

- Income deprivation affecting Older People - The changes between 2004 and 2007 were mixed with half improving and half deteriorating. There were average levels with 9.5% in the highest 10% in England but high levels in the next ranges with 41% in the highest 30%. In the areas in the highest 10% between 40% and 50% of older people are living in households affected by poverty and 75% of these have not improved suggesting that the gap has widened.
- Barriers to Housing and Services and Living Environment show lower than average levels in the highest ranges in England. The spatial characteristics are unlike other domains in that the highest levels were mainly on the edge of urban areas and where housing may not be affordable to all.

It should be noted that all Super Output Areas have a population near to the average of 1500. This means that in each case it is possible to say that approximately the same percentage of the Borough's population lives in that range of the level of deprived Super Output Areas. This is not to say that all the population in that area is deprived but it is likely that a very significant proportion will be suffering from the effects of deprivation.

17. Conclusion

This report is intended as an introduction to the main characteristics of the Indices of Deprivation 2007 as it affects Wigan Borough. This will require dissemination to relevant decision making bodies, as there are continuing implications for strategy development and service delivery.

Some initial broad views on the key characteristics can be drawn from the results as set out in the Commentary. It is also reasonable to conclude that the Indices of Deprivation 2007 confirms patterns of deprivation similar to those found in previous Indices and other recent studies.

The Indices of Deprivation have previously been used by the government and other bodies in the allocation of resources. It is expected that the Indices of Deprivation 2007 will be used when decisions on future rounds of funding are taken, such as regeneration funding, Lottery funding and European funding. Indeed the Indices of Deprivation has already been used in the recent allocation of the Working Neighbourhoods Fund and in this case the key data that have influenced this decision have been from the Employment Deprivation Domain.

Further analysis can be available, as with the previous Indices, on request to provide profiles setting out the information from the Domains and the main Index for various areas in the Borough.

18. Appendix – Deprivation Indicators

The Indicators included in each Domain are as follows:-

Income Deprivation Domain

The purpose of this domain is to capture the proportion of the population experiencing income deprivation in an area.

- Adults and children in Income Support Households (Source: Department for Work and Pensions (DWP) 2005)
- Adults and children in Income-Based Job Seekers Allowance Households (Source: DWP 2005)
- Adults and children in Pension Credit (Guarantee) Households (Source: DWP 2005)
- Adults and children in those Working Tax Credit households where there are children in receipt of Child Tax Credit whose equivalised income (excluding housing benefits) is below 60 per cent of the median before housing costs (Source: HMRC 2005)
- Adults and children in Child Tax Credit Households (who are not eligible for IS, Income-Based JSA, Pension Credit or Working Tax Credit) whose equivalised income (excluding housing benefits) is below 60 per cent of the median before housing costs (Source: HMRC 2005)
- National Asylum Support Service (NASS) supported asylum seekers in England in receipt of subsistence support, accommodation support, or both (Source: NASS 2006)

Employment Deprivation Domain

This domain measures employment deprivation conceptualised as involuntary exclusion of the working age population from the labour market.

- Recipients of Jobseekers Allowance (both contribution-based and income based): men aged 18-64 and women aged 18-59 (Source: DWP 2005)
- Recipients of Incapacity Benefit: men aged 18-64 and women aged 18-59 (Source: DWP 2005)
- Recipients of Severe Disablement Allowance: men aged 18-64 and women aged 18-59 (Source: DWP 2005)
- Participants in the New Deal for the 18-24s who are not in receipt of JSA (Source: DWP 2005)
- Participants in the New Deal for 25+ who are not in receipt of JSA (Source: DWP 2005)
- Participants in the New Deal for Lone Parents (after initial interview) (Source: DWP 2005)

Health Deprivation and Disability Domain

This domain measures rates of poor health, early mortality and disability in an area and covers the entire age range.

- Years of Potential Life Lost (YPLL) (2001 to 2005, Source: ONS)
- Comparative Illness and Disability Ratio (CIDR) (2005, Source: DWP)
- Measures of acute morbidity, derived from Hospital Episode Statistics (2004 to 2005, Source: Department of Health)

- The proportion of adults under 60 suffering from mood or anxiety disorders based on prescribing (2005, Source: Prescribing Pricing Authority), Hospital Episode Statistics (2004 to 2005, Source: Department of Health) and Incapacity Benefit data (2005, Source: DWP)

Education, Skills and Training Deprivation Domain

This domain captures the extent of deprivation in terms of education, skills and training in a local area. The indicators are structured into two sub domains: one relating to education deprivation for children/young people in the area, and one relating to lack of skills and qualifications among a sub-set of the working age adult population.

Sub Domain: Children/young people

- Average test score of pupils at Key Stage 2 (2 year weighted average, 2004- 2005, Source: Department for Children, Schools and Families (DCSF))
- Average test score of pupils at Key Stage 3 (2 year weighted average, 2004- 2005, Source: DCSF)
- Best of 8 average capped points score at Key Stage 4 (this includes results of GCSEs, GNVQs and other vocational equivalents) (2 year weighted average, 2004-2005, Source: DCSF)
- Proportion of young people not staying on in school or non-advanced education above the age of 16, Source: HMRC Child Benefit (CB) data
- Secondary school absence rate (2 year average 2004-2005, Source: DCSF)
- Proportion of those aged under 21 not entering higher education (5 year average, 2001-2005, Source: Universities and Colleges Admission Service (UCAS), Higher Education Statistics Agency (HESA))

Sub Domain: Skills

- Proportions of working age adults (aged 25-54) in the area with no or low qualifications (Source: 2001 Census)

Barriers to Housing and Services Domain

The purpose of this domain is to measure barriers to housing and key local services. The indicators are structured into two sub-domains: 'geographical barriers', and 'wider barriers' which includes issues relating to access to housing, such as affordability.

Sub Domain: Wider Barriers

- Household overcrowding (Source: 2001 Census)
- LA level percentage of households for whom a decision on their application for assistance under the homeless provisions of housing legislation has been made, assigned to the constituent Super Output Areas (Source: Communities and Local Government, 2005)
- Difficulty of Access to owner-occupation (Source: modelled estimates produced by Heriot-Watt University, 2005)

Sub Domain: Geographical Barriers

- Road distance to a GP surgery (Source: National Administrative Codes Service, 2005)

- Road distance to a general stores or supermarket (Source: MapInfo Ltd, 2005)
- Road distance to a primary school (Source: DCFS, 2004-05)
- Road distance to a Post Office or sub post office (Source: Post Office Ltd, 2005)

Crime Domain

This domain measures the rate of recorded crime for four major crime types, representing the risk of personal and material victimisation at a small area level.

- Burglary (4 recorded crime offence types, Police Force data for April 2004-March 2005, constrained to Crime and Disorder Reduction Partnership (CDRP) level)
- Theft (5 recorded crime offence types, Police Force data for April 2004-March 2005, constrained to CDRP level)
- Criminal damage (10 recorded crime offence types, Police Force data for April 2004-March 2005, constrained to CDRP level)
- Violence (14 recorded crime offence types including Robbery, Police Force data for April 2004-March 2005, constrained to CDRP level).

Living Environment Deprivation Domain

This domain focuses on deprivation with respect to the characteristics of the living environment. It comprises two sub-domains: the 'indoors' living environment which measures the quality of housing, and the 'outdoors' living environment which contains two measures about air quality and road traffic accidents.

Sub-Domain: The 'indoors' living environment

- Social and private housing in poor condition (2003 – 2005 average, Source BRE and Communities and Local Government, modelled EHCS)
- Houses without central heating (Source: 2001 Census)

Sub-Domain: The 'outdoors' living environment

- Air quality (2005, Source: Geography Department at Staffordshire University and NAEI modelled at Super Output Area level)
- Road traffic accidents involving injury to pedestrians and cyclists (2003-2005 average, Source: DfT, STATS19 (Road Accident Data) smoothed to Super Output Area level)

Income Deprivation Affecting Children Index

Income Deprivation Affecting Older People Index

In addition, an Income Deprivation Affecting Children Index and an Income Deprivation Affecting Older People Index has been created. These two indices represent the proportion of children aged 0-15 living in income deprived households and the proportion of older people aged 60 and over living in income deprived households respectively.